



Product catalogue 2022/2023

Novelties:

Investing

Duplication

Gypsum

TRI-Color Waxblank

Extra hard sheet wax

Zirconia Blocks St & Ut
(separate catalogue)

MORE

MORE EFFICIENCY

WITH MORSA





For more than a century we at MORSA GmbH GERMANY have produced dental materials that meet the most demanding expectations when it comes to quality and reliability. We are an innovative enterprise whose different departments are run by expert specialists. Since that long time we have sold our products over distributors in more than 50 countries worldwide based on the principles of stability and accountability. Our main production facility, company headquarters and distribution center is situated in Krumbach (Germany) not far from Munich with production and sales cover approximately 4100 m² of space. We produce waxes and also other materials for different other branches, for example for orthopaedics, epithetics, cytology, investment casting industry and for technical applications. As a prominent player in the worldwide OEM market we manufacture private label products for suppliers all over the world since many decades. We are ready to expand our international engagement with competent dealers who will sell our excellent quality products as their private label.

Quality and control:

Based on modern quality management systems our production is subject of strong quality control with continuous improvements in production processes and efficiency. The high quality of MORSA products and raw input material is furthermore controlled in our own laboratory. In addition in our modern research and quality control department of MORSA Dental new product lines have been created and special methods for finest filtering of the raw material has been developed to top the increasing quality requests in this field. Because of this MORSA has gained international reputation for exceptional quality, reliability and innovation. MORSA products are manufactured to ISO 13485:2016 and to ISO 9001:2008

New parameter for assessing MORSA waxes

Due to the ever increasing demands on dental waxes, in this new MORSA catalogue we have given our range of waxes additional technical parameter, e.g. average setting point, melting point, dropping point, ash content, penetration. In particular the ash content of the wax gives the user important information on whether the wax has the ability to combust without leaving a residue. The lower the penetration value, the harder the wax.

Principles

The MORSA brand name is a byword for reliability, premium quality, and outstanding service. As a medium-sized, family owned and managed organisation, we are large enough for our wax technologies to be a global success, but small enough to act flexibly, independently, and consistently.

THE WORLD OF DENTAL WAXES



CONTENT

1. CAD/CAM MATERIALS	4	4. METAL DENTURE BASE WAX	18
1.1 CAD/CAM Waxblanks for Pressable Ceramics	5	4.1 Metal denture base sculpting wax	18
1.2 CAD/CAM Millable Waxblanks for Casting	5	4.2 Metall denture wax sheets	18
1.3 PMMA cast blanks	5	4.3 Mesh retention	19
2. FULL AND PARTIAL DENTURE PROSTHETICS	6	4.4 Perforated wax retainer	19
2.1 Pink Sheet Waxes	7	4.5 Wax templates	19
2.1.1 Modelling wax Special	7	4.5.1 Molar clasps	19
2.1.2 Sheet wax Top-Techno	8	4.5.2 Premolars	19
2.1.3 Baseplate wax Extra Hard Super	8	4.5.3 Bonyhard	19
2.1.4 Sheet cast wax 1184	8	4.5.4 Ring clasps	19
2.1.5 Sheet wax Futur	9	5. SPRUE WAX	20
2.1.6 Set-up wax Euro	9	5.1 Duroflex Sprue Wax	21
2.1.7 Modelling wax Standard	9	5.2 Casting wax sticks	21
2.2 Further types of prosthetic waxes	10	5.3 Triangle wax casting sprues	22
2.2.1 Occlusal rims, preformed	10	5.4 Wax casting sticks with reservoir	22
2.2.2 Bite registration wax in rods	11	5.5 Sprue wax casting channels	22
2.2.3 Occlusal rim wax in rods	11	5.6 Orthodontic wax	22
2.3 Alu bite registration sheets	12	5.7 Preparation wax	22
2.4 Functional edge and impression tray extension wax	12	6. ADDITIONAL PRODUCTS FOR THE DENTAL LABORATORY	23
2.5 Boxing wax	12	6.1 Tray plates – Light-Curing	23
2.6 Setting/Mounting wax	12	6.2 MORSA - Wax Brush and Wax knives	23
2.7 Sticky wax	13	7. Gypsum & casting	28
2.7.1 MORSA sticky wax	13		
2.7.2 Original Friese sticky wax in rods and discs	13		
2.7.3 Adhesive wax	13		
3. CROWN AND BRIDGE TECHNIQUE	14		
3.1 Crown waxes	15		
3.2 Inlay waxes	15		
3.3 Modelling Wax Universal/Carving Wax	15		
3.4 Milling wax	16		
3.5 Cervical wax	16		
3.6 Blocking-out wax	16		
3.7 Aesthetic wax	17		
3.8 CAD/CAM Modelling-scan wax	17		
3.9 Flexo-Dip Dipping wax	17		



"The adjustment of dental waxes, especially that for the CAD/CAM – technology, is game-changing for our work"

JAN LANGNER

1

CAD/CAM
MATERIALS



1.1 CAD/CAM Waxblanks for Pressable Ceramics

New techniques demand new materials.

Just in the past few years, options provided by CAD/CAM technology have developed at such a high pace that the necessary materials could only be developed in the second instance. Our search for the appropriate waxes for this technology did not convince us of resinenriched wax blanks. The basic principle is to retain the data gained from the pattern waxed-up for the definitive restoration. Transferral of the data to the definitive restoration provides for structured working and saves a considerable amount of time. The data resulting from the wax-up can be used as a basis for the definitive restoration. The most important aspect is that the milled wax components can be processed further without problems being incurred. This was achieved by developing this wax. It is very easily sculpted and warmed – Its high-contrast color benefits dental technology.

The 98 mm blanks are also available in 14, 16, 18, 20, 25 and 30 mm sizes.



Carving or adding is as easy as producing a regular outline wax. Easy to cast, press and to carve. The workflow process remains in the same properties and colors of the material.

Properties:

Drop melting point: 77 -83 °C

Penetration : 1 - 5

Order no. DR 000 920 HD 806-20
yellow, 98.5 x 20 mm, 1 piece

Order no. DR 000 930 HD 805-20
cream, 98.5 x 20 mm, 1 piece

1.2 CAD/CAM Millable Waxblanks for Casting

Waxblanks are synthetic wax blanks for the fabrication of wax models. These special wax blanks are not intended for intra-oral use! They burn out without trace. For up to 30 units. The material can be used to make frameworks for crown and bridge models. These models can be used in the lost wax process when casting, when making dental restorations. Leaves no residue and easily machined with a low coefficient of thermal expansion.

INDICATION AND BENEFITS:

Blue Wax :

- Cast Copings
- Burnout and Press Over
- perfect Burnout and Cast Needs Contour Cast

White Wax:

- Diagnostic Presentations
- All Burnout and Cast

Grey Wax:

- All waxing needs where a different esthetic appearance is desired

Compatible Machines:

- Wieland
- ZirkonZahn
- High Speed Dental
- Armann Girbach Ceramill
- and many more...



Properties:

Chem. composition:
synthetic wax

Odour: odourless

Colour: white opaque / yellow

Drop melting point: 100 -130 °C

Density: 0,97 g/cm³

Solubility in water: not soluble

Order no. 000 900 HD 830-20
white, 98.5 x 20 mm, 1 piece

Order no. DR 000 950 HD 830-20
grey, 98.5 x 20 mm, 1 piece

Order no. DR 000 970 HD 830-20
blue, 98.5 x 20 mm, 1 piece



1.3 PMMA cast blanks

PMMA blanks enable users of a milling machine to process metals and still take advantage of the convenient and reliable method of designing restorations.

Restorations are designed as usual and machined from the PMMA. PMMA blanks are made from a plastic which burns without trace and can therefore be used in the lost material casting process. Since the PMMA blanks are very easy to shape by milling, they present a fast and cost-effective method of verifying the functionality and fit of the restoration on the dental model. PMMA blanks are designed to be milled dry. They are available in a thickness of 18 mm or other.

Order no. DR 000 500 HD 830
transparent, 98.5 x 18 mm, 1 piece

NOVELTY IDS 2021 TRI-COLOR WAX-BLANK

new way in
diagnostic and aesthetic

ZTM Rudolf Reil, Naburg

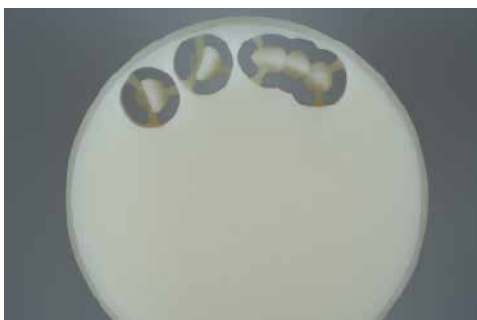
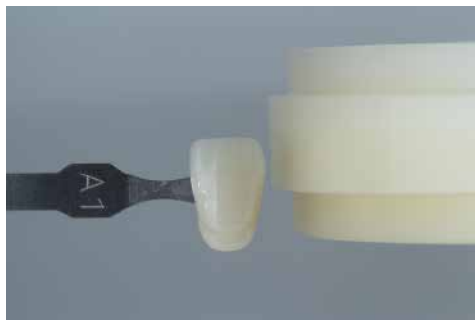


Advantages for laboratory and dentists:

- o Fitting of esthetic wax-ups in the patient's mouth
- o consultation between dentist and laboratory
- o inexpensive fast processing
- o very good processing for shape changes during patient consultation
- o quick subtractive and additive changes can be implemented immediately
- o can be used for press ceramics
- o Multifunctional esthetic wax for multiple indications, brilliant in processing



Order no. DR 000 999 HD 830-20



Overview Wax Blank Sizes

Farbe/color:	weiß/white	grau/grey	blau/blue	pink/pink	creme/cream
Stärke/thickness:					
10	DR000900HD830-10	DR000950HD830-10	X	X	X
12	DR000900HD830-12	DR000950HD830-12	DR000990HD830-12	X	X
14	DR000900HD830-14	DR000950HD830-14	DR000970HD830-14	X	DR000930HD804-14
16	DR000900HD830-16	DR000950HD830-16	DR000970HD830-16	X	X
18	DR000900HD830-18	DR000950HD830-18	DR000970HD830-18	X	X
20	DR000900HD830-20	DR000950HD830-20	DR000970HD830-20	X	DR000930HD804-20
25	DR000900HD830-25	DR000950HD830-25	DR000990HD830-25	X	X
30	X	X	X	DR000732HD830	X

1.5 MORSA CAD Wax gingiva - Prothetik

**For making functional try ins and individual bite rims
in the complete denture technique**

The process supporting CAD discs are used to transform conventional working steps
in the laboratory into complete digital processes.

The discs can also be used for conventional finishing procedures in injection and pressing

techniques - the ability to boil it out for wax removal makes it possible

MORSA CAD Wax gingiva



Order no. DR 000 732 HD 830-M

2.

FULL AND PARTIAL DENTURE PROSTHETICS



MORSA'S LEADING RANGE OF PERFECTLY GRADED MODELLING WAXES.

MORSA waxes comply with ISO 15854. Each wax has a precisely controlled softening profile.

2.1 Pink Sheet Waxes

(Set-up wax/modelling wax/baseplate wax)

All sheet waxes are fully combustible:

Ash Content: 0.000-0.005

2.1.1 Modelling wax Special

High quality elastic plate wax for the whole resin prosthetics. Composition based on a perfect combination of microwaxes, paraffin, natural waxes and bees' waxes. High edge and breaking stability as well as extremely low thermal contraction. It can be modelled and cut very well

- the top-selling MORSA sheet wax
- made from the best raw materials - very high bees' wax content
- two different seasonal qualities for summer and winter
- two different sheet thicknesses 1.25 mm and 1.5 mm
- pleasant elastic quality during processing
- low degree of thermal contraction when cooling down
- no risk of unintentional changes in the set-up
- precise reproductive accuracy
- good wax-up characteristics
- high strength
- setting point: 59 °C for summer wax / ash content 0.002
- setting point: 57 °C for winter wax / ash content: 0.000
- sheet size: 175 x 80 x 1.25 mm and 175 x 80 x 1.5 mm
- available in 500 g / 2.500 g



Order no. DM 000 106 VA 804
Summer 175 x 80 x 1.25 mm, 500 g

Order no. DM 000 108 VA 804
Summer 175 x 80 x 1.50 mm, 500 g

Order no. DM 000 102 VA 804
Summer 175 x 80 x 1.25 mm, 2.5 kg

Order no. DM 000 104 VA 804
Summer 175 x 80 x 1.50 mm, 2.5 kg

Order no. DM 000 107 VA 804
Winter 175 x 80 x 1.25 mm, 500 g

Order no. DM 000 109 VA 804
Winter 175 x 80 x 1.50 mm, 500 g

Order no. DM 000 103 VA 804
Winter 175 x 80 x 1.25 mm, 2.5 kg

Order no. DM 000 105 VA 804
Winter 175 x 80 x 1.50 mm, 2.5 kg



2.1.2 Sheet wax Top-Techno

High-grade all-round plate wax. Harder than special summer. Light elasticity and light adhesiveness during fixing teeth.

- Especially cost-effective
- All-round wax for the entire range of prosthodontics
- quick to set after application
- pleasantly elastic during processing
- low degree of thermal contraction when cooling down
- no risk of unintentional changes in the set-up
- precise reproductive accuracy
- good wax-up characteristics
- high strength
- setting point: 59 °C / ash content: 0.002
- sheet size: 175 x 80 x 1.25 mm
- available in 500 g / 2.500 g



Order no. DM 000 129 VA 804
175 x 80 x 1.25 mm, 500 g

Order no. DM 000 130 VA 804
175 x 80 x 1.25 mm, 2.5 kg



2.1.3 Baseplate wax Extra Hard Super

is a high temperature stability modelling wax. This wax is comfortable to model because it is stiff but not brittle and can be well cut without distortions the ideal summer wax even at high temperatures

- quick to set after application
- pleasantly elastic during processing
- low degree of thermal contraction when cooling down
- no risk of unintentional changes in the set-up
- precise reproductive accuracy
- good wax-up characteristics
- high strength
- setting point: 65° C / ash content: 0.000
- sheet size: 175 x 80 x 1.25 mm
- available in 500 g



Order no. DM 000 101 VA 804
175 x 80 x 1.25 mm, 500 g



2.1.4 Sheet cast wax 1184

Red and hard quality
very opaque



Order no. DM 000 199 VA 804
175 x 80 x 2.0 mm, 2.5 kg



2.1.5 Sheet wax Future

- Best quality wax, suitable for the entire range of prosthodontics
- high bees wax content
- two different sheet thickness 1.25 mm and 2 mm
- very cost-effective
- high strength
- setting point: 59° C / ash content: 0.004
- sheet size: 175 x 80 x 1.25 mm
- available in 500 g / 2.500 g



Order no. DM 000 133 VA 804
175 x 80 x 1.25 mm, 500 g

Order no. DM 000 134 VA 804
175 x 80 x 1.25 mm, 2.5 kg

Order no. DM 000 135 VA 804
175 x 80 x 2.00 mm, 500 g

Order no. DM 000 136 VA 804
175 x 80 x 2.00 mm, 2.5 kg

2.1.6 Set-up wax Euro

This softer wax is very easy to model and cut. Very elastic and plastic quality. During shaping EURO does not reset and offers a high adhesive strength without sticking. Versatile wax for resin prosthetics.

- High modelling capability
- Edge stable
- Elastic and plastic
- All-round wax für the entire range of prosthodontics
- quick to set after application
- low degree of thermal contraction when cooling down
- no risk of unintentional changes in the set-up
- good wax-up characteristics
- setting point: 55° C / ash content: 0.000
- sheet size: 175 x 80 x 1.25 mm
- available in 500 g



Order no. DM 000 123 VA 804
175 x 80 x 1.25 mm, 500 g

Order no. DM 000 124 VA 804
175 x 80 x 1.25 mm, 2.5 kg



2.1.7 Modelling wax Standard

Very cost effective all-round modelling wax.

- Setting point: 57 °C
- ash content: 0.005
- sheet size: 175 x 80 x 1.25 mm
- available in 500 g / 2.500 g



Order no. DM 000 138 VA 804
175 x 80 x 1.25 mm, 500 g

Order no. DM 000 139 VA 804
175 x 80 x 1.25 mm, 2.5 kg

Order no. DM 000 141 VA 804
175 x 80 x 1.50 mm, 500 g

Order no. DM 000 142 VA 804
175 x 80 x 1.50 mm, 2.5 kg

Order no. DM 000 147 VA 804
175 x 80 x 2.00 mm, 500 g

Order no. DM 000 148 VA 804
175 x 80 x 2.00 mm, 2.5 kg



Summer waxes
softening temperature
typically 41-46 °C



Winter waxes
softening temperature
typically 35-41 °C



65°	59°	59°	59°
Extrahart Super	Futur	Top Techno	Spezial Sommer

57°	57°	57°
Spezial Winter	Standard	Euro

2.1.8 Modellierwachs Beauty hard ARTICULAR

The new Beauty hard set-up is characterized its very high hardness and exceptionally high resistance to distortion. Distortion of the wax-up is therefore even during longer try-ins. The slight tackiness of the wax supports the fixation of the teeth.



It was important to us in the development to be able to join the layers together without any problems and without the wax breaking after heating over the Bunsen burner. It should then be rolled that holds together and sticks. The processing range should be over several minutes should be possible.

Temperature-resistant, hard, four-seasons setting-up wax with high softening temperature. Used for setting up denture teeth in wax for all prosthetic restorations, e.g. equally suitable for partial and full acrylic dentures, chrome cobalt saddles, immediate and temporary dentures and extensions. The natural-looking gingival shading corresponds to hot and cold curing denture acrylics.

Features:

It was particularly important to us that at 35°C (mouth temperature) the wax must not be softer than at 22° or 18°; so when it is tried in the mouth it is still HARD and pressure / bite resistant. It should be easily formable into a roll, which can be securely attached to the base plates and glued to the base plates.

Important: The wax has a long processing range and thus allows the technician sufficient time for the tooth set-up. The adhesive strength of the wax fixes the teeth securely in the wax denture.

As a manufacturer of various dental waxes, we offer a wide range of plate waxes in almost all qualities.

- High flow temperature enables longer try-ins and use of duplicating gels
- Minimum spring-back (low)
- High shape and dimensional accuracy
- Low setting contraction, minimum warpage of the set-up after cooling

Color: pink, for taking bite occlusal records

Size: 175 x 80 x 2mm

VE: 500g

Modellierwachs Beauty hard ARTICULAR
Inhalt: 500g · Stärke: 2mm

Order no: DMD00194VA804



Dimensionally stable even with longer try-ins.

Quick-Bite Stop-Spacer

Innovative Orthodontic bite wax - **patented**

Article.Number : DBSH0001 20 Pieces per Package



- Innovative bite wax for use in splint therapy, sleep medicine and orthodontics. Patented by Prof. Godt / Schweizer, Dental Technician. Easy, reliable bite registration with defined occlusal height using integrated stops.
- Wax bite with defined occlusal height (2 mm) for use in orthodontics, sleep medicine, bruxism appliances and bite-lifting appliances.

Easy, reliable use. Using this bite wax your team will be able to take reliable, reproducible bite registrations, highly improved speed (quickly heated, quickly cooled). For reliable bite registration with orthodontic appliances, bruxism and bite-raising appliances, in sleep medicine.

How to use:

- The wax bite must be immersed in a 45°C warm water tank for 20-25 seconds before use. After insertion in the mouth and slight adaptation to the upper or lower dental arch, the lower jaw should be moved to the target position. The patient should then bite slowly together until she/he feels noticeable resistance and stops. The bite can then be removed and checked visually. The correct bite depth is identified by the colourings of the impressions.
- The wax bite can be used in the dental lab in the usual way.



VDDI
Dental Solutions.
German Manufacturers.



Order no. DB 000 112 AU 803
small, yellow (soft), 100 pcs.

Order no. DB 000 113 AU 803
large, yellow (soft), 100 pcs.

Order no. DB 000 114 AU 804
small, red (medium hardness), 100 pcs.

Order no. DB 000 115 AU 804
large, red (medium hardness), 100 pcs.

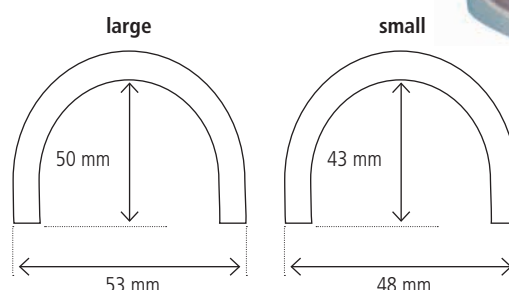
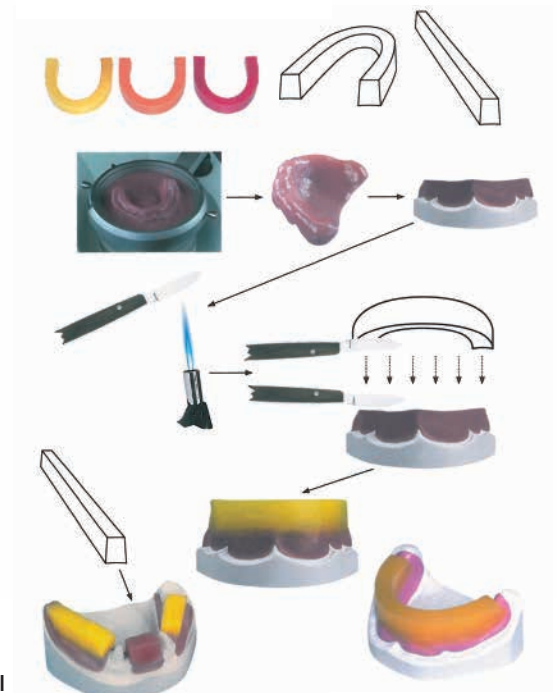
Order no. DB 000 116 AU 805
small, pink (hard), 100 pcs.

Order no. DB 000 117 AU 805
large, pink (hard), 100 pcs.

2.2 Further types of prosthetic waxes

2.2.1 Occlusal rims, preformed (horse shoe shaped)

- for the production of full occlusal rims
- performed dental arches
- no more time consuming re-shaping of preformed party required
- Optimal fit on the alveolar ridge due to basal groove
- the slanted ends prevent precontact and therefore the urge to gag
- quickly adaptable to every oral situation
- quick and easy to re-shape when in a warmed state
- form stability after cooling guarantees accurate bite registration
- simplified visual control due to opaque colours
- available in three hardnesses and three colours:
 - soft = yellow penetration: 30
 - medium hardness = red penetration: 25
 - hard = pink penetration: 23
- available with strawberry flavour, red, penetration: 28
- available in two sizes each with 100 pcs.
 - small rim = Standard: height 10 mm, length 43 mm, width 48 mm
 - large rim = Standard: height 12 mm, length 50 mm, width 53 mm





2.2.2 Bite registration wax in rods

- for the production of partial occlusal rims
- for placing onto partial metal denture saddles
- for accurate bite registration
- on warming, as tough as bees' wax
- stable after cooling
- simplified visual control due to opaque colours
- available in three different hardnesses and three colours
 - yellow = soft, penetration: 30
 - rod = medium hardness, penetration: 25
 - pink = hard, penetration: 23
- 108 x 10 x 10 mm
- available in 490 g / 1.850 g



new with basal groove

Order no. DB 000 101 AU 803
yellow (soft)

108 x 10 x 10 mm, 490 g

Order no. DB 000 102 AU 804
red (medium hardness)

108 x 10 x 10 mm, 490 g

Order no. DB 000 103 AU 805
pink (hard)

108 x 10 x 10 mm, 490 g

Order no. DB 000 201 AU 803
yellow (soft)

108 x 10 x 10 mm, 1.850 g

Order no. DB 000 202 AU 804
red (medium hardness)

108 x 10 x 10 mm, 1.850 g

Order no. DB 000 203 AU 805
pink (hard)

108 x 10 x 10 mm, 1.850 g



2.2.3 Occlusal rim wax in rods

- for the production of full occlusal rims
- for placing onto partial metal denture saddles
- for accurate bite registration
- on warming, as tough as bees' wax
- stable after cooling
- simplified visual control due to opaque colours
- available in three different hardnesses and three colours:
 - yellow = soft, penetration: 30
 - rod = medium hardness, penetration: 25
 - pink = hard, penetration: 23
- 108 x 10 x 10 mm
- available in 2.000 g

Order no. DB 000 105 AU 803
yellow (soft), 180 x 10 x 10 mm

500 g

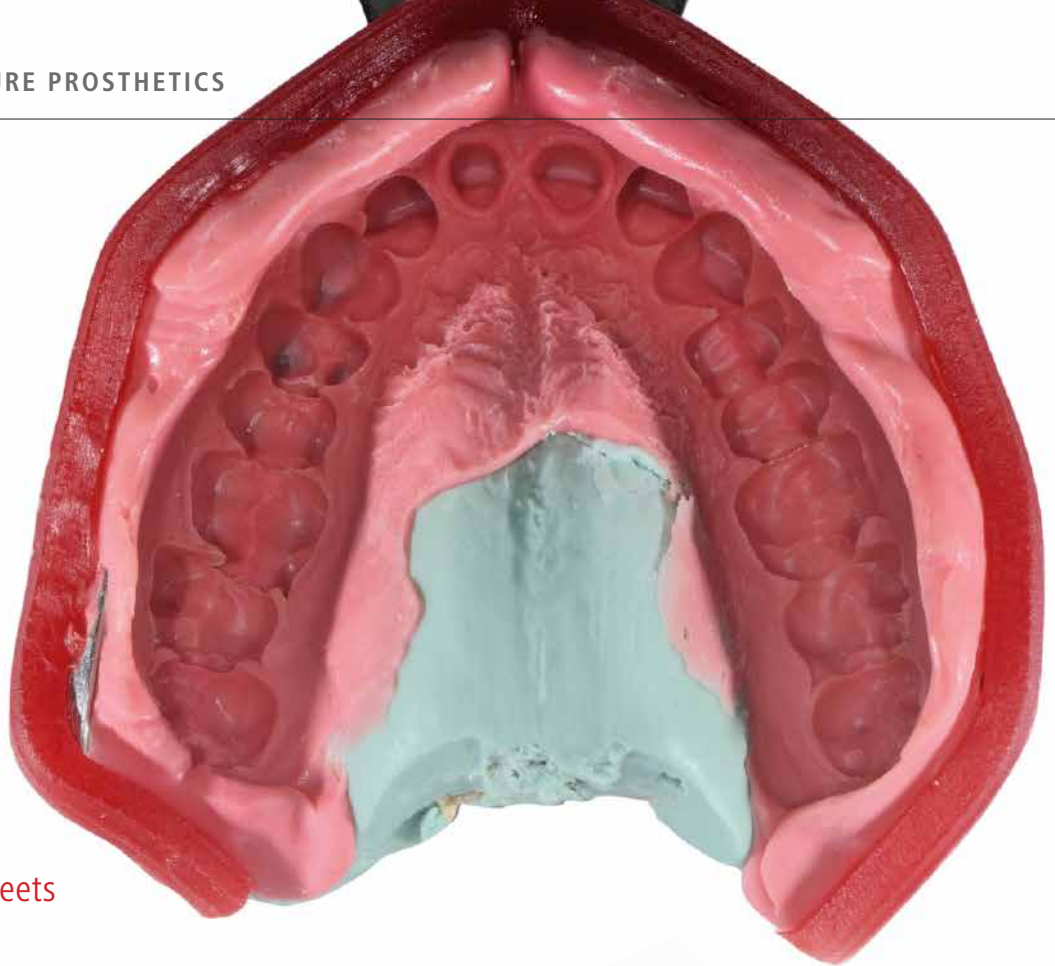
Order no. DB 000 106 AU 804
red (medium hardness)

180 x 10 x 10 mm, 2.0 kg

Order no. DB 000 107 AU 805
pink (hard), 180 x 10 x 10 mm

2.0 kg





2.3 Alu bite registration sheets

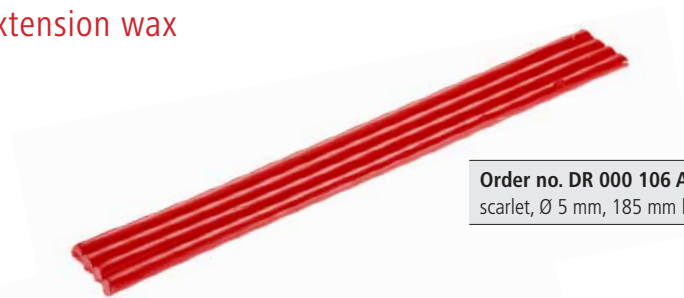
- a hard bite registration wax
- for precise bite registrations
- clearly recognisable impression
- stable wax sheets (2 mm thickness) with a high aluminium content
- process in a warmed state
- heat up in warm water or using a Bunsen burner
- colour: silver
- setting point: 22 °C, penetration: 18
- sheet size: 175 x 80 x 2 mm
- available in 12 sheets / 250 g



Order no. DB 000 104 HA 806
silver, 175 x 80 x 2.5 mm, 250 g

2.4 Functional edge and impression tray extension wax

- high degree of plasticity
- exact dorsal dam
- adequately adhesive
- melting point: 70 - 74 °C
- dimensions: Ø 5 mm, 185 mm long
- available in 32 sticks / 110 g



Order no. DR 000 106 AU 807
scarlet, Ø 5 mm, 185 mm long

2.5 Boxing wax

- for boxing-in impressions prior to casting
- for extending the tray edges
- no heating-up required
- colourless
- available as sticks of 300 x 28 x 1 mm; Weight 500 g



Order no. DR 000 104 HA 802
colourless, 300 x 28 x 1 mm
gross 500 g

2.6 Setting/Mounting wax

- for setting-up teeth in full and partial dentures
- no unintentional changes in the wax-up after cooling
- available in the colours red and black
- available in sheets with dimensions: 175 x 80 x 2,5 mm
- available as 500 g



Order no. DR 000 102 VA 805
red, 175 x 80 x 2.5 mm

2.7 Sticky wax

2.7.1 MORSA sticky wax

- universally applicable sticky wax for all areas of prosthodontics
- high adhesive strength
- hard, but not brittle
- elastic
- for the fixation of acrylic teeth in a matrix
- for the fixation of a matrix to a model
- joins base sheets to bite registrations
- colour: yellow and pink
- dimensions: 100 x 40 x 20 mm
- available as six bars at a total of 370 g
- available as discs at a total of 320 g
- Melting point: 64-66 °C



Order no. DK 000 110 HD 803
yellow, discs, gross 320 g

Order no. DK 000 111 HD 804
pink, discs, gross 320 g

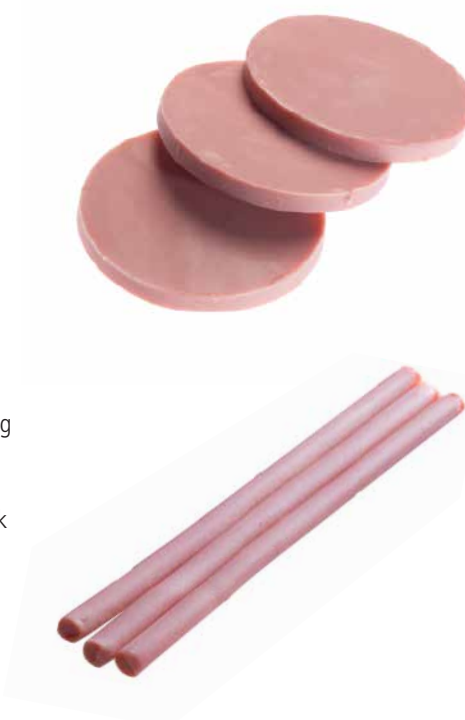
Order no. DK 000 400 HD 803
yellow, 100 x 40 x 20 mm
bars, gross 370 g

Order no. DK 000 500 HD 804
pink, 100 x 40 x 20 mm
bars, gross 370 g

Order no. DK 000 107 AU 804
pink, Ø 7 mm, 15 mm long
24 sticks

2.7.2 Original Friese sticky wax

- the classical sticky wax
- extremely high adhesive characteristics
- for the fixation of acrylic teeth in a matrix
- for the fixation of a matrix to a model
- joins base sheets to bite registrations
- very quick setting
- no risk of unintentional changes to the wax-up
- shape stability
- colour: rose
- packaged as 24 sticks, dimensions: Ø 7 mm, 15 mm long
- melting point: 59 - 63 °C



Order no. DK 000 112 HD 804
pink, Ø 75 mm, 8 mm thick
10 discs

Order no. DK 000 105 HD 804
Ø 75 mm, 8 mm thick
discs, gross 1 kg

- available as ten discs, dimensions: Ø 75 mm, 8 mm thick
- available in packs of 1 kg discs

CROWN AND
BRIDGE TECHNIQUE



3.



3.1 Crown waxes

- the well-proven all-round crown wax for the crown and bridge technique
- very good characteristics for the preparation of wax-up and carving techniques
- opaque and intensive colouration of the waxes makes the contours in wax-ups easy to see
- very good wax-up qualities
- minimal shrinkage
- very good fitting accuracy
- easy to carve
- available in two colours: grey and dark green
grey: setting point: 80,5 °C, ash content: 0.106
dark green: setting point: 83,5 °C, ash content: 0.000
- available in clip-clap tins of 65 g
- available in cylinders of 70 g



Order no. DR 000 114 HD 813
dark green, 65 g, tin

Order no. DR 000 115 HD 814
grey, 65 g, tin

Order no. DR 000 150 HD 813
dark green, 70 g, cylindre

3.2 Inlay waxes

- for the fabrication of occlusal surfaces
- minimal contraction
- optimal stability
- good waxing qualities
- very good fitting accuracy
- easy to carve
- available in two colours
grey and dark green
grey: setting temperature: 79 °C, ash content: 0.006
dark green: setting temperature: 73 °C, ash content: 0.002
- available in clip-clap tins of 65 g



Order no. DR 000 116 HD 813
dark green, 65 g, tin

Order no. DR 000 117 HD 814
grey, 65 g, tin

3.3 Modelling wax Universal/carving wax

In developing this new wax we have succeeded in reducing the multitude of different demands placed on a sculpting wax to the fundamentals

These were the conceptual aspects:

1. Keep shrinkage during solidification to a minimum
2. Burn-out residue-free
3. Remain opaque when warmed
4. High-contrast color
5. Optimum carving properties
6. Pinpoint application and flooding onto a cold surface

This new development implements all of these demands.
Wax by dental technicians, for dental technicians.

In plaster colours!



Order no. DR 000 128 HD 806
Universal modelling wax,
yellow, 65 g, tin

Order no. DR 000 129 HD 805
Universal modelling wax,
dentin, 65 g, tin

Order no. DR 000 158 HD 806
Universal modelling wax,
yellow, 70 g, cylindre

Order no. DR 000 159 HD 805
Universal modelling wax,
dentin, 70 g, cylindre

Order no. DR 000 210 HA 802
Memoryeffect wax, isolating
white, 65 g, tin



3. CROWN AND BRIDGE TECHNIQUE

3.4 Milling wax

- ideal for milling and carving
- chips cleanly
- produces smooth surfaces
- available in the colour blue
- Ash content: 0.002
- Setting point: 67 °C
- available in clip-clap tins of 65 g
- available in cylindres of 70 g



Order no. DR 000 118 HD 800
blue, 65 g, tin

Order no. DR 000 151 HD 800
blue, 70 g, cylindre

3.5 Cervical wax

- for accurately fitting margins
- ideal for edges of crowns due to stress free application and low setting shrinkage
- good adaptation
- available in the colours red and blue
- red: Setting point: 60 °C; Ash content: 0.035
- blue: Setting point: 64 °C; Ash content 0.02
- available in clip-clap tins of 65 g



Order no. DR 000 119 HD 805
red, 65 g, tin

Order no. DR 000 152 HD 805
red, 70 g, cylindre

Order no. DR 000 120 HD 800
blue, 65 g, tin

3.6 Blocking-out wax

- Special wax for blocking-out cavities and rough surfaces
- high melting point: 78 - 81 °C
- extremely hard
- connects well with die lacquer
- used for blocking-out and making undercuts parallel in cast metal denture preparation
- adheres well to plaster models
- flows well into the smallest areas
- easy to carve
- adheres well
- easy to boil out
- opaque coloured contours are easily recognisable
- light green: Setting point: 80 °C; Ash content: 0,058
- available in clip-clap tins of 65 g



Order no. DR 000 121 HD 815
pink, 65 g, tin



3.7 Aesthetic wax

- burns without residue
- for understanding and fabricating wax patterns or teeth in their natural shape and colour
- low contraction
- good flowing and carving characteristics
- high surface density / opaque
- the exact waxed pattern is immediately recognisable
- the opaque colours enable the contours to be clearly visible
- available in four colours from ivory to brown
ivory: Setting point: 82 °C; Ash content: 0.127
cream: Setting point: 85 °C; Ash content: 0.077
light brown: Setting point: 85 °C; Ash content: 0.160
brown: Setting point: 80 °C; Ash content: 0.003
- available in clip-clap tins of 65 g
- available in cylindres of 70 g



Order no. DR 000 123 HD 809
ivory, 65 g, tin

Order no. DR 000 153 HD 809
ivory, 70 g, cylindre

Order no. DR 000 124 HD 810
cream, 65 g, tin

Order no. DR 000 125 HD 803
light brown, 65 g, tin

Order no. DR 000 126 HD 801
brown, 65 g, tin

3.8 CAD/CAM Modelling - scan wax

Very opaque



Order no. DR 000 400 HD 830
white, 65 g, tin

3.9 Flexo-Dip Dipping wax

- for the production of wax copings with an even walled thickness by dipping
- no risk of unintentional distortion
- available in the colours yellow and red
red: Setting point: 71 °C; Ash content: 0.000
yellow: Setting point: 69 °C; Ash content 0.002
- in granular form for quick, precise melting
- available in a sprinkle tin of 300 g
- available in an economy pack

New Quality: Very plastic dipping wax with good elastic memory and minimal contraction. Recommended working temperature 75 - 85 °C.



Order no. DR 000 136 HD 803
yellow, 300 g, sprinkle tin



4.

METAL DENTURE BASE WAX



4.1 Metal denture base sculpting wax

- ideal for connecting all wax and plastic pre-fabricated parts when fabricating a metal denture base
- available in dark blue:
Setting point: 60 °C; Ash content: 0.002
- available in clip-clap tins of 65 g



Order no. DG 000 108 HD 800
blue, 65 g, tin

4.2 Metal denture wax sheets

- the transparency of the sheets allows markings on the model to be seen
- good adaptation
- secure adherence to model during duplication
- shape stability
- available as a smooth casting wax sheet
in blue in thicknesses from 0.25 to 0.8 mm
- available as a smooth casting wax sheet
in white in thicknesses from 0.3 to 0.6 mm
- available in structured, green casting wax sheet: finely veined and coarsely veined in various thicknesses: from 0.3 to 0.6 mm
- Sheet size 175 x 80 mm
- available as 15 sheets



Order No. DH 000 124 NB 813
finely veined green
150 x 75 x 0,30 mm

Order No. DH 000 126 NB 813
150 x 75 x 0,40 mm

Order No. DH 000 127 NB 813
150 x 75 x 0,50 mm

Order No. DH 000 128 NB 813
150 x 75 x 0,60 mm

Order No. DH 000 161 NB 813
smooth green 150 x 75 x 0,30 mm

Order No. DH 000 162 NB 813
150 x 75 x 0,40 mm

Order No. DH 000 144 NB 813
coarsley veined green
150 x 75 x 0,30 mm

Order No. DH 000 145 NB 813
150 x 75 x 0,40 mm

Order No. DH 000 146 NB 813
150 x 75 x 0,50 mm

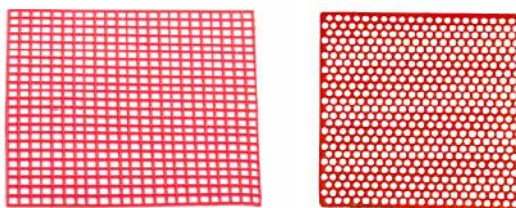
Order No. DH 000 147 NB 813
150 x 75 x 0,60 mm

Order No. DH 000 163 NB 813
smooth green 150 x 75 x 0,50 mm

Order No. DH 000 164 NB 813
150 x 75 x 0,60 mm

4.3 Mesh retention

- adheres very well to the model
- easy to adapt
- dimensionally stable - easy to shape
- universal mesh structure for the best retention results
- dimensions: 40 x 60 mm
- available in 20 layers
- colour: red



Order No. DH 000 119 NB 805
red, grid mesh, 20 layers

Order No. DH 000 220 NB 805
red, round holes, 20 layers

4.4 Perforated wax retainer

- for the retentive areas in lower and upper metal dentures
- good stability
- high plasticity
- adheres well to refractory models
- available as 25 bars
- colour: red

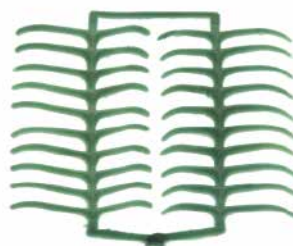


Order No. DH 000 122 NB 855
red, 25 bars

4.5 Wax templates

4.5.1 Molar clasps

- adheres well to model
- easy to adapt
- dimensionally stable - easy to shape
- available in 10 layers
- colour: green



Order No. DH 000 115 NB 813
green, 10 layers

4.5.2 Premolars

- adheres well to model
- easy to adapt
- dimensionally stable - easy to shape
- available in 10 layers
- colour: green



Order No. DH 000 116 NB 813
green, 10 layers

4.5.3 Bonyhard

- adheres well to model
- easy to adapt
- dimensionally stable - easy to shape
- available in 10 layers
- colour: green



Order No. DH 000 117 NB 813
green, 10 layers

4.5.4 Ring clasps

- adheres well to model
- easy to adapt
- dimensionally stable - easy to shape
- available in 10 layers
- colour: green



Order No. DH 000 118 NB 813
green, 10 layers

5. SPRUE WAX



SPRUE
WAX



5.





5.1 DUROFLEX Sprue Wax

Tension-free and very malleable wax wire. Due to its high stability it may be waxed onto any object easily.

Prevents accidental deformation of objects to be cast.

Packaging: reel 250 g

- stress-free
- elastic
- high strength
- no risk of unintentional distortion of casting objects
- available in two hardnesses and colours:
green = medium hardness
blue = hard
- available in the thicknesses from 2.0 to 5.0 mm
- packaged individually at 250 g



Order No. DH 000 130 NB 813
green, reel 2.0 mm

Order No. DH 000 131 NB 813
green, reel 3.0 mm

Order No. DH 000 132 NB 813
green, reel 3.5 mm

Order No. DH 000 133 NB 813
green, reel 4.0 mm

Order No. DH 000 134 NB 813
green, reel 5.0 mm



Order No. DH 000 140 NB 814
blue, reel 2.0 mm

Order No. DH 000 141 NB 814
blue, reel 3.0 mm

Order No. DH 000 142 NB 814
blue, reel 3.5 mm

Order No. DH 000 143 NB 814
blue, reel 4.0 mm

Order No. DH 000 144 NB 814
blue, reel 5.0 mm

Order No. DH 000 151 NB 814
green, reel 2.0 mm

Order No. DH 000 150 NB 814
green, reel 2.5 mm

Order No. DH 000 152 NB 814
green, reel 3.0 mm

Order No. DH 000 153 NB 814
turquoise, reel 3.5 mm

Order No. DH 000 154 NB 814
turquoise, reel 4.0 mm

Order No. DH 000 155 NB 814
turquoise, reel 5.0 mm

5.2 Adhesive preparation wax foil for saddles

adhesive Preparation and casting wax on foil

- adhesive
- Application: relinable saddles
- soft and transparent

Quality

- adhesive
- soft



Order No. DA 000 100 HD 800

5. SPRUE WAX

5.4 UTILITY WAX

MORSA UTILITY WAX is to be used in the process of denture impression. It is applied to the impression tray to protect the periphery-edge. It ensures a good transfer from the impression to the model



Order no. DR000116AU807

Utility Wax ropes red square 450 g



Order no. DR000116AU807-W

Utility Wax ropes white round 450 g

5.5 Sprue wax casting channels



Order no. DRS H0040
red, rods Ø 5 mm, 15 cm long, 450 g

5.6 Orthodontic Wax

In transparent box made of crystal clear polystyrene filled with orthodontic wax.



Order no. DRSH 03950NB0
Kit/4 stripes (Ø 5 mm, 45 mm)
50 Kits/box



5.7 Preparation/Mounting wax

It can be well adapted to the master model. Suitable for casted partial dentures, before duplication of models.



Order No. DR 000 100 NB 807
175 x 80 x 0.50 mm 200 g

Order No. DR 000 103 VA 807
175 x 80 x 0.70 mm 200 g



6.

ADDITIONAL PRODUCTS FOR THE DENTAL LABORATORY

6.1 LC MORSA – Light-Curing Tray plates

**For the fabrication of individual and functional impression trays.
The material is also indicated for producing base plates for
wax-ups and for bite templates.**

The sheets are anatomically shaped and vestibular enlarged for better use on moulds of dentate jaws. The design and the handling characteristics make the sheet suitable for the upper as well as the lower jaw.

The material can be cured with halogen and UV. Once cured properly the material is dimensionally stable.

- high molecular acrylate with inorganic filler / easy manipulating before – dimensionally stable after curing
- only one sheet model for upper and lower / less stock needed
- pink / blue opaque colour
- curing in 3 – 5 minutes with halogen or UV
- light curing / cures on demand
- 3 years shelf life
- 50 sheets per package

Indications

- individual impression trays
- functional impression trays
- base plates for wax-ups
- bite templates



Order no. DH 000 301 NB 814
pink, 50 pieces per package

Order no. DH 000 303 NB 814
blue, 50 pieces per package



7.1 Morsa Scan Stone New Dental gypsum type IV



Special stone for CAD-CAM systems

CAM-Stone has been developed for opto-electronic scanning. It prevents interfering reflections in the defined wavelengths. By using Scan-Stone the coating of the gypsum model is not necessary. The short setting time allows a fast chairside treatment.

Recommendation: For opto-electronic scanning (e.g. Cerec-System), crown and bridge models, master casts with precious and non-precious alloys.

Colour: ivory

Packagings:

DH 000830NB816	5,0 kg bag
DH 000833NB816	10,0 kg paper bag
DH 000832NB816	25,0 kg carton

7.2 Mor-Rock 22 Natural type IV Super Hard Stone



A fine flowing super hard stone of exceptional hardness. Outstanding edge stability and compressive strength, very good resistance to scratching and breakage while having a minimum expansion.

Also available as **Morsa Premium Speed**, where a quick setting time (6 – 7 min.) is desired.

Recommendation: crown and bridge models, implant models, master models with precious/ nonprecious alloys, control models, checkbite-casts

Colour: golden brown, white

Packagings: golden brown

DH 000928NB816	5,0 kg bag
DH 000923NB816	10,0 kg paper bag
DH 000922NB816	25,0 kg carton

white

DH 000618NB816	5,0 kg bag
DH 000613NB816	10,0 kg paper bag
DH 000612NB816	25,0 kg carton

7.3 Morsa Alpin Hard Stone Dental gypsum type III



Especially suitable for prosthetics and orthodontics because of special choice and raw materials and selected production process.

Recommendation: working and checkbite casts, acrylic dentures, repairs, relines, situation casts

Colour: blue, yellow

Packagings: blue

DH 000821NB816	5,0 kg bag
DH 000823NB816	10,0 kg paper bag
DH 000828NB816	25,0 kg carton

yellow

DH 000810NB816	5,0 kg bag
DH 000813NB816	10,0 kg paper bag
DH 000818NB816	25,0 kg carton

7.4 MOR-Vest II Speed



MOR-Vest II is a phosphate-bonded, special speed investment with a ultrafine corn size for crown and bridge work.

- Sufficient expansion even for CrCo alloys
- Excellent surfaces smoothness due to ultra-fine particles
- Fast preheating saves time
- Effortless devesting
- May be used with conventional rings or ringless. Expansion is unrestricted when ringless methods are utilized.
- Excellent fit both with precious or non-precious alloys as well as palladium-based alloys
- Ideal flow properties
- Sufficient working time



DH 000191NB816	5,0 kg (32 x 160 g)
DH 000192NB816	20,0 kg (125 x 160 g)

7.5 MORSIT XF Speed



MORSIT XF Speed is a phosphate bonded, graphite free and very fine grain precision investment for partial denture frameworks.

It is usable for the conventional and speed casting technique and is suitable for casting all types of dental alloys.

- super fine grain size, creamy consistency
- perfect fitting, very smooth casting surfaces, excellent reproduction of details
- easy divesting

MORSIT XF Speed should be used with MORSA type 100 liquid!

DH 000310NB816	MORSIT XF Speed 5,0 kg carton (28 x 180 g)
DH 000311NB816	MORSIT XF Speed 20 kg (112 x 180 g)
DH 000312NB816	MORSIT XF Speed 20 kg (50 x 400 g)

7.6 MORE-MICRO



A fine, phosphate-bonded, graphite-free precision investment.

Micro is suitable for use as a CrCo investment and also used successfully in for crown and bridgework technique. As with MORSIT, expansion is regulated by using liquid types 100 or 140 liquids.

- A super fine particle size ensures exact reproduction of detail and very smooth casting surfaces
- Expansion is precisely regulated by varying the concentration of the liquid
- Excellent flow properties

Micro should be used with MORSIT

Expansion liquid, type 100 or 140!

DH 000201NB816	5,0 kg (28 x 180 g)
DH 000203NB816	20,0 kg (50 x 400 g)
DH 000204NB816	20,0 kg (4 x 5,0 kg)

7. GYPSUM & INVESTMENTS

7.7 MOR-Vest Press Ceramic



A phosphate bonded, graphite free precision investment especially developed for all pressable ceramic systems in the speed casting technique. Silavest Press can be used for the press to metal and press to zirconium system. This super fine investment guarantees a perfect fitting and very smooth surface.

- super fine powder, very creamy consistency
- for all kinds of pressing systems, also for large muffles
- for press to metal / press to zirconium
- super fine pressed surfaces
- easy divesting
- sufficient working time

DH 002003NB816 5,0 kg (50 x 100 g)

7.8 Standard Expansionsliquid



Two different expansion liquids are available for MORSA phosphate-bonded MORSA investments. MORSA technical instructions should be closely followed in selecting and utilizing these liquids.

- super fine powder, very creamy consistency
- for all kinds of pressing systems, also for large muffles
- for press to metal / press to zirconium
- super fine pressed surfaces
- easy divesting
- sufficient working time
- palladium-based alloys
- Ideal flow properties

DH 000241NB816 Expansionsliquid Typ 100 (1,0 Liter)

7.9 MORSIL 1 : 1



A high-quality addition-curing duplicating silicone with all the prerequisites for the adhesive tape and flasking techniques.

- Easy and economical measuring
- Suitable for dispensers
- Ideal low viscosity

DH 001001NB816 Morsil green 1 : 1 (1,0 kg) – Components A + B

Mixing ratio:	1 : 1
Mixing under vacuum	40 sec
Working time at 23 °C	>5 min
Curing time at 23 °C	30 – 45 min
Tear resistance (DIN 53504)	ca. 2,2 N/mm ²
Elongation at tear (DIN 53504)	ca. 310 %
Tear growth resistance (ASTMD 624 B)	> 6,5 N/mm ²
Shore A hardness at 60 min.	> 24
Colour	pink

8.1 MOR-ISO

Alginate-based separating solution, plaster/resin

Product description:

Special alginate-based separating agent for separating plaster surfaces from heat-curing and cold-curing PMMA denture materials.

Composition:

Water, alginate, preservative. The product is free of formaldehyde.

Field of application:

MOR-ISO is suitable for all fabrication techniques and work in dental prosthetics where isolation of plaster against PMMA based materials is required.

Processing:

Completely remove wax residues, grease and dirt from the plaster model or the plaster surfaces to be isolated. Then thoroughly water the model until no more air bubbles escape from the plaster. After watering, allow the surface to dry briefly.

Pour the required amount of isolation into the measuring cup and apply a thin layer 1-2 times with a soft brush. Wash out the used brush and discard the remaining isolation.

Excess isolation can be carefully rinsed off under running water, then allow the model to air dry until a silky sheen has formed on the surface.

Important notes:

- Soaking the plaster model in warm water accelerates the soaking and drying of the isolation.
- Do not allow the first layer of isolation to dry completely before applying the second layer.
- Never return residual isolation to the original container or dip the brush used into the bottle. This will result in contamination and therefore destruction of the isolation solution.

Storage and Safety Measures:

Store at temperatures not exceeding 25°C [77°F]. Protect from sunlight. Close containers immediately after use.

Delivery forms:

1.000ml

Additional sizes upon request



Order no. DH 000701NB817
1000ml



Service / OEM Manufacturing

With over a 120 years of experience, MORSA Dental can OEM - manufacture a comprehensive range of Own Brand Products to your individual requirements. This includes an extensive range of dental materials for Laboratories and Dentists

Consult us to increase your market share.

MORSA
DENTAL

Morsa Sallinger GmbH
Nordstraße 3
D-86381 Krumbach
Deutschland
Telefon: + 49 (0) 8282 800 44-0
Fax: + 49 (0) 8282 800 44-33
www.morsa-dental.de
info@morsa.de



MORSA waxes have been developed further within the last decades due to consistent communication with practitioners and dental researchers. The management board is always open and grateful for feedback to MORSA from dental technicians and dentists, with opinions, suggestions and constructive criticism based on their practical experiences. For every idea which is transformed into a product you will receive a prize. We would like to thank you for the many years of support you have given us.