

HEINE QUALITY
MADE IN GERMANY

➤ HEINE Binocular Loupes and Headlights

Perfect view for highest accuracy during all procedures.
As individual as your daily work.

EXPERIENCE THE DIFFERENCE





Experience HEINE ML4 LED HeadLight

Perfect fit. Perfect view.
During long procedures.

Specially designed for healthcare professionals who need a perfect view during long surgical operations or treatments. The headband offers multiple adjustments points and soft padding ensuring highest comfort and a firm fit.

LED^{HQ}
LED IN HEINE QUALITY.



TOPSELLER IN ALL SURGICAL SPECIALTIES

- **Choose your power source.** Wireless, headband-mounted (UNPLUGGED) or portable power pack (mPack) (see page 6).

- **Perfect fit.** Through multiple adjustment points.

- **Shadow free image.** Through a compact coaxial design.

- **Adjustable spot size.** e.g. 30 to 80 mm at 420 mm working distance – for an optimal field of view.

- **Unique HEINE LED^{HQ}.** Homogenous. True colour rendering.

- **i-View loupe mount.** For any angle of view. With flip-up function.



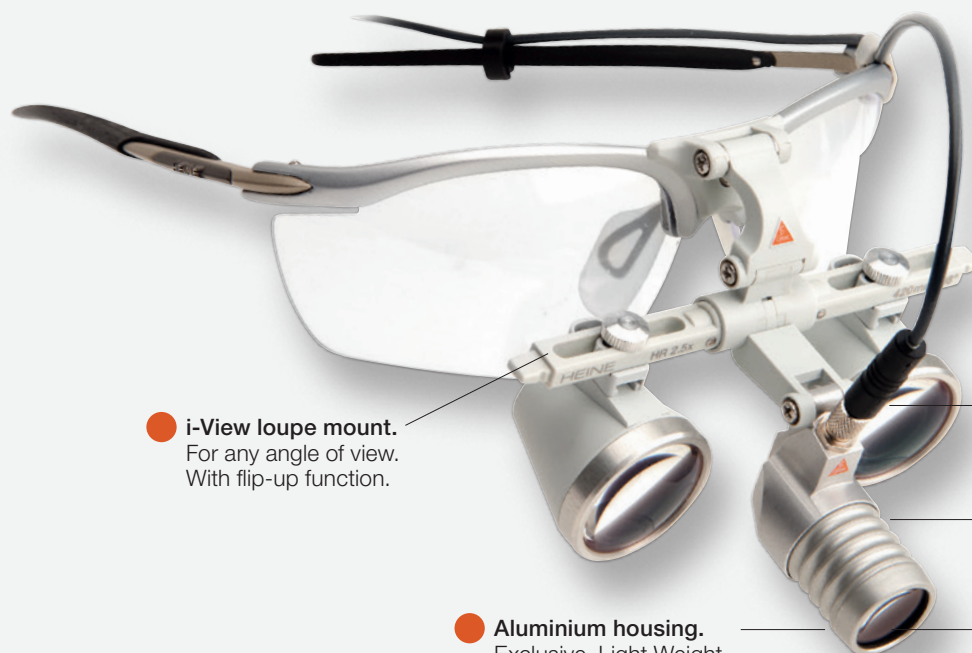


Experience HEINE LoupeLight2

Brighter. Lighter. Improved functionality.

MOST TRUSTED BY DENTISTS AND ENT SPECIALISTS

LED HQ
LED IN HEINE QUALITY.



● **i-View loupe mount.**
For any angle of view.
With flip-up function.

● **Aluminium housing.**
Exclusive. Light Weight.
Durable.



mPack mini.
Smaller. Lighter.
USB charging.
Operating time typ.
9 hours. In continuous
operation at full power
typ. 4 hours.

**Replaceable high
quality connecting cord** with
a splashproof threaded
connector.

● **Shadow free.**
Through a compact
coaxial design.

Unique HEINE LED^{HQ}
Homogenous.
True colour rendering.

> For ordering information, please see the last page or visit www.heine.com

HEINE MicroLight2

Ultralight. Universal. Without magnification.

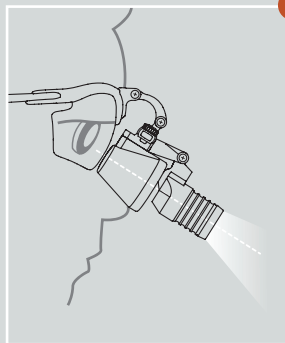




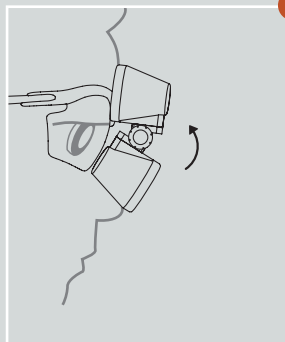
Experience HEINE Binocular Loupes

High resolution. Crisp image.
Various magnifications.

- Your optimal loupe is as individual as your work. HEINE's HIGH TECH optics offer a large variety of loupes to fulfill your individual needs (see page 6).
- Experience the difference of getting less tired – even during long procedures through
 - Crisp, high-resolution image
 - Large field of view
 - Homogenous magnification
 - Lightweight
 - Multi-coated, achromatic technology (HR) or
 - Prismatic for high resolution (HRP)



- **Unique HEINE i-View Loupe Mount**
Adjustable viewing angle ensures a coaxial, shadow-free image.



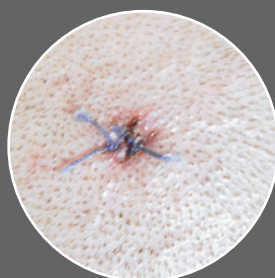
- **Flip-up function.**
Ability to flip optics up for unmagnified views and overview.

OPTIMAL MAGNIFICATION

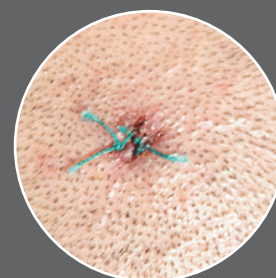
EXPERIENCE THE DIFFERENCE: THE PERFECT COMBINATION OF OPTIMAL MAGNIFICATION ...



Without light and
without magnification



With a comparable
competitor product
(with illumination and
with magnification)



● With HEINE 2.5x
Binocular Loupes
and LoupeLight2

LED IN HEINE QUALITY.

∴ There's LED. And there's LED^{HQ}

- With LEDs there are big quality differences. HEINE has set a new standard which maintains that only the best is good enough, from the selection of materials to processing, from light intensity to dimmability, and from thermal management to a colour rendering index as high as possible.

That's what we call LED in HEINE Quality – or LED^{HQ}.



Illumination

Every HEINE instrument with LED is developed in such a way that it delivers optimal illumination edge to edge without distracting reflections for the application in question. Depending on the application area, the instrument is either preset or the brightness can be adjusted steplessly from 3–100 %. This feature is patented since early 2018 for all dimmable BETA LED^{HQ} instrument heads.

Colour rendering

The colour rendering index (CRI) shows how accurately colours are portrayed compared with daylight. HEINE LED^{HQ} instruments achieve exceptionally high CRI values to ensure that the user sees the colours as they are during each examination – for absolutely reliable and precise diagnosis.

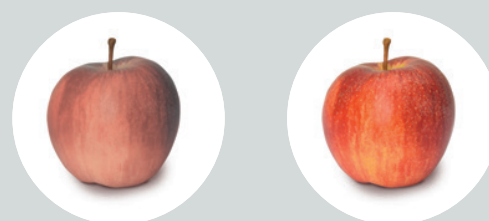
Operating life

Thanks to a special thermal management the LED^{HQ} always operates in the optimal temperature range. This guarantees consistent performance and an unlimited operating life. That's why our LED^{HQ} instruments are virtually maintenance-free, as there's no longer a need to replace the light source.



Conventional LED

HEINE LED^{HQ}



Conventional LED

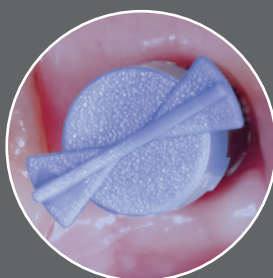
HEINE LED^{HQ}

PERFECT ILLUMINATION

... AND BRIGHT AND HOMOGENEOUS ILLUMINATION AND TRUE COLOUR RENDERING



Without light and without magnification



With a comparable competitor product (with illumination and with magnification)

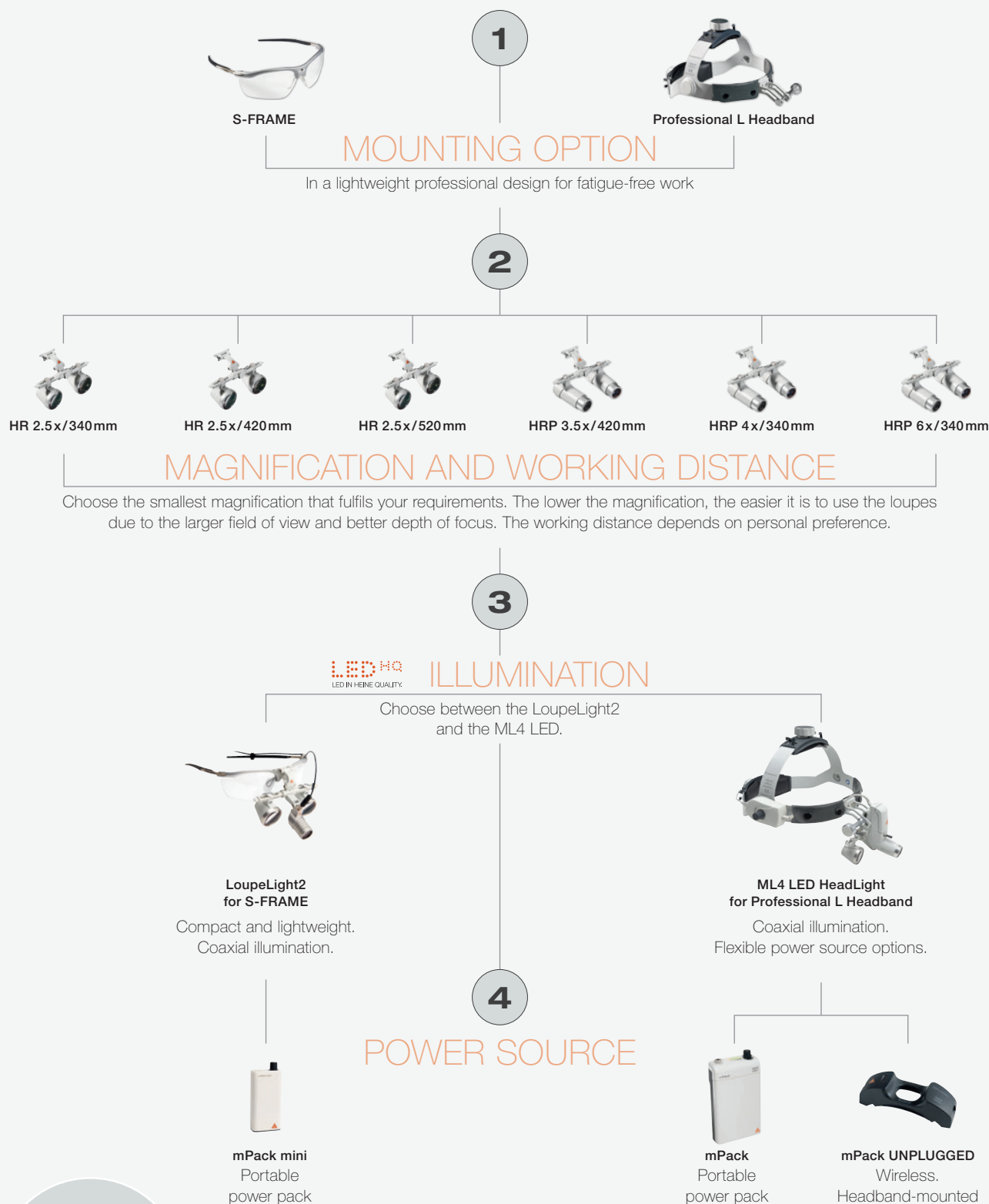


With HEINE 2.5x Binocular Loupes and LoupeLight2



Experience your perfect combination

In only 4 steps. Choose your perfect configuration.



For more
information,
please
contact us!

Experience true individuality

Ordering information.

PERFECT VIEW

ML4 LED HeadLight
on Headband
Professional L with
HR Binocular Loupes
and S-GUARD

J-008.31.441

MicroLight2
on lightweight
headband

J-008.31.277

ML4 LED HeadLight
on Headband
Professional L

J-008.31.416

LoupeLight2
on S-FRAME
with HR Binocular
Loupes

C-008.32.451

LoupeLight2
on S-FRAME
with HRP
Binocular Loupes

C-008.32.453



Our most trusted sets:

LOUPES AND LIGHTS

ML4 LED HeadLight with HR/HRP Binocular Loupes with i-View loupe mount and S-GUARD on Headband Professional L, mPack and plug-in transformer, cleaning fluid

with HR Binocular Loupe 2.5x / 420mm working distance

J-008.31.441

with HRP Binocular Loupe 3.5x / 420mm working distance

J-008.31.442

LoupeLight2 with HR/HRP Binocular Loupes with i-View loupe mount on S-FRAME, detachable yellow filter, mPack mini, mPack mini Belt Clip, E4-USB plug-in transformer, protective lenses, 2 sterilisable levers, retaining cord, cleaning fluid, case

with HR Binocular Loupe 2.5x / 420mm working distance

C-008.32.451

with HRP Binocular Loupe 3.5x / 420mm working distance

C-008.32.453

LIGHTS ONLY

ML4 LED HeadLight on Headband Professional L with Wall Transformer EN50 UNPLUGGED, 2x mPack UNPLUGGED

J-008.31.416

MicroLight2 on lightweight headband with mPack mini, mPack mini Belt Clip, E4-USB plug-in transformer, retaining cord and cleaning fluid, case

J-008.31.277

LOUPES ONLY

Binocular Loupes Sets with i-View on S-FRAME, Protective lenses, 2 sterilisable swivel levers, retaining cord, cleaning fluid, cleaning cloth, case

with HR Binocular Loupe 2.5x / 420mm working distance

C-000.32.356

with HRP Binocular Loupe 4x / 340mm working distance

C-000.32.431

Find your individual combination with all the various loupes options on
www.heine.com/binocular_loupes_headlights



QUALITY made in GERMANY.

As a global leader in the manufacture of primary diagnostic instruments with over 500 employees, HEINE Optotechnik has been a 100% family owned and managed company for more than 75 years. We continue to develop and manufacture HEINE instruments at our facilities in Germany, where we combine decades-long experience and craftsmanship with the most modern manufacturing technologies.

We are represented in over 120 countries around the world, with subsidiaries in the US, Canada, Australia and Switzerland as well as 3,000 representatives, importers and specialist dealers.

We look forward to hearing from you – and would like to know more about your opinions, desires and suggestions regarding our products.



■ HEINE SUBSIDIARY COMPANIES &
REPRESENTATIVES

 **HEINE Optotechnik GmbH & Co. KG**
Dornierstr. 6, 82205 Gilching, Germany,
Tel. +49 (0) 81 05 - 77 28 0, Fax +49 (0) 81 05 - 77 28 20 2
E-Mail: info@heine.com, www.heine.com



10/21. A-000.00.257 e

