

Shinwon Dental



Contents

I. Company Introduction



II. Main Business



III. Vision



Company Profile

I. Introduction

Incorporation

- July 1988

No. of Employees

- 52 employees

Main Business

- Manufacturing and Distribution

Business field

- Dental products

Subsidiary Company

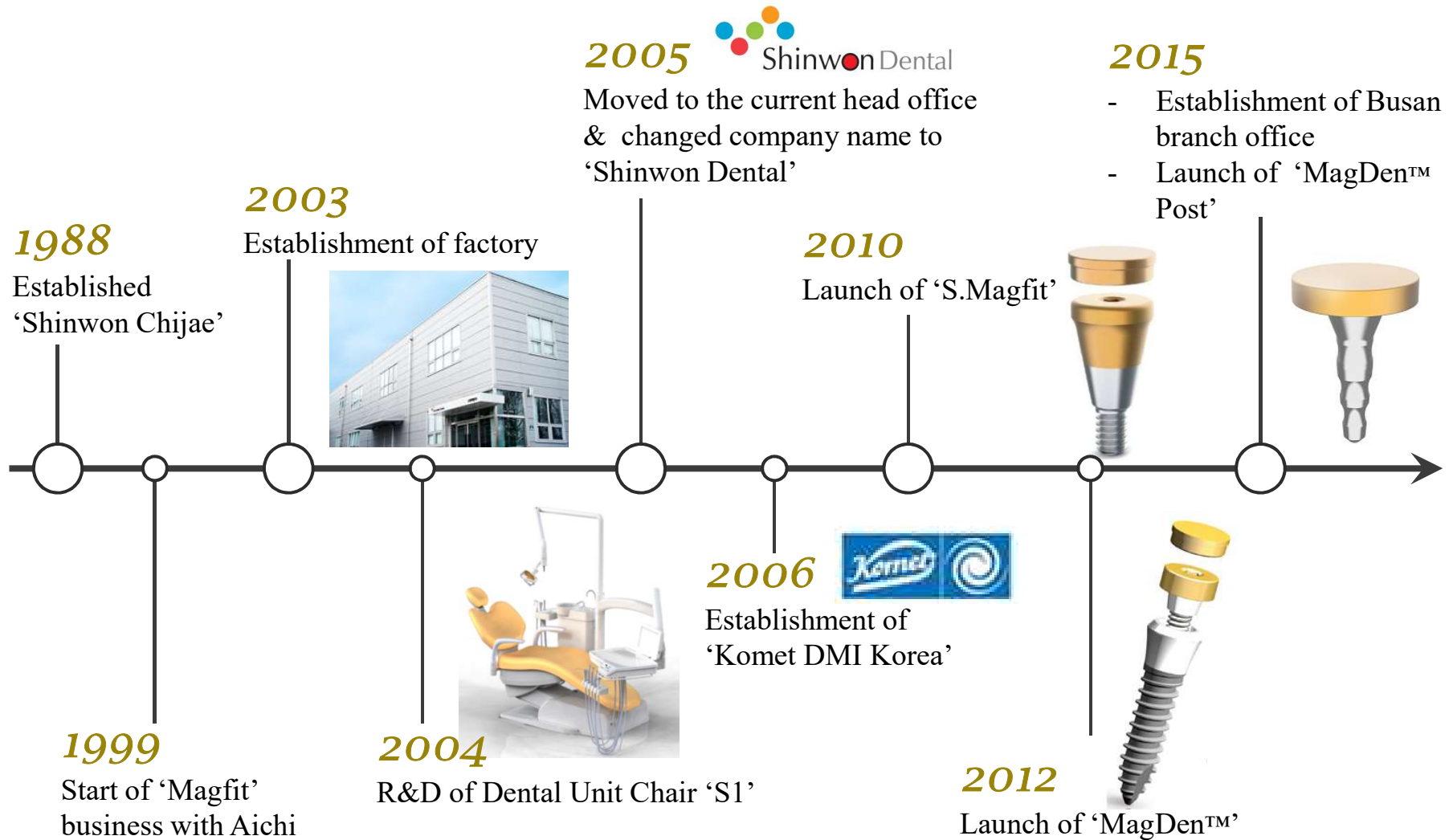
- Komet DMI Korea

Global Partners

- 18 business partners from 9 countries

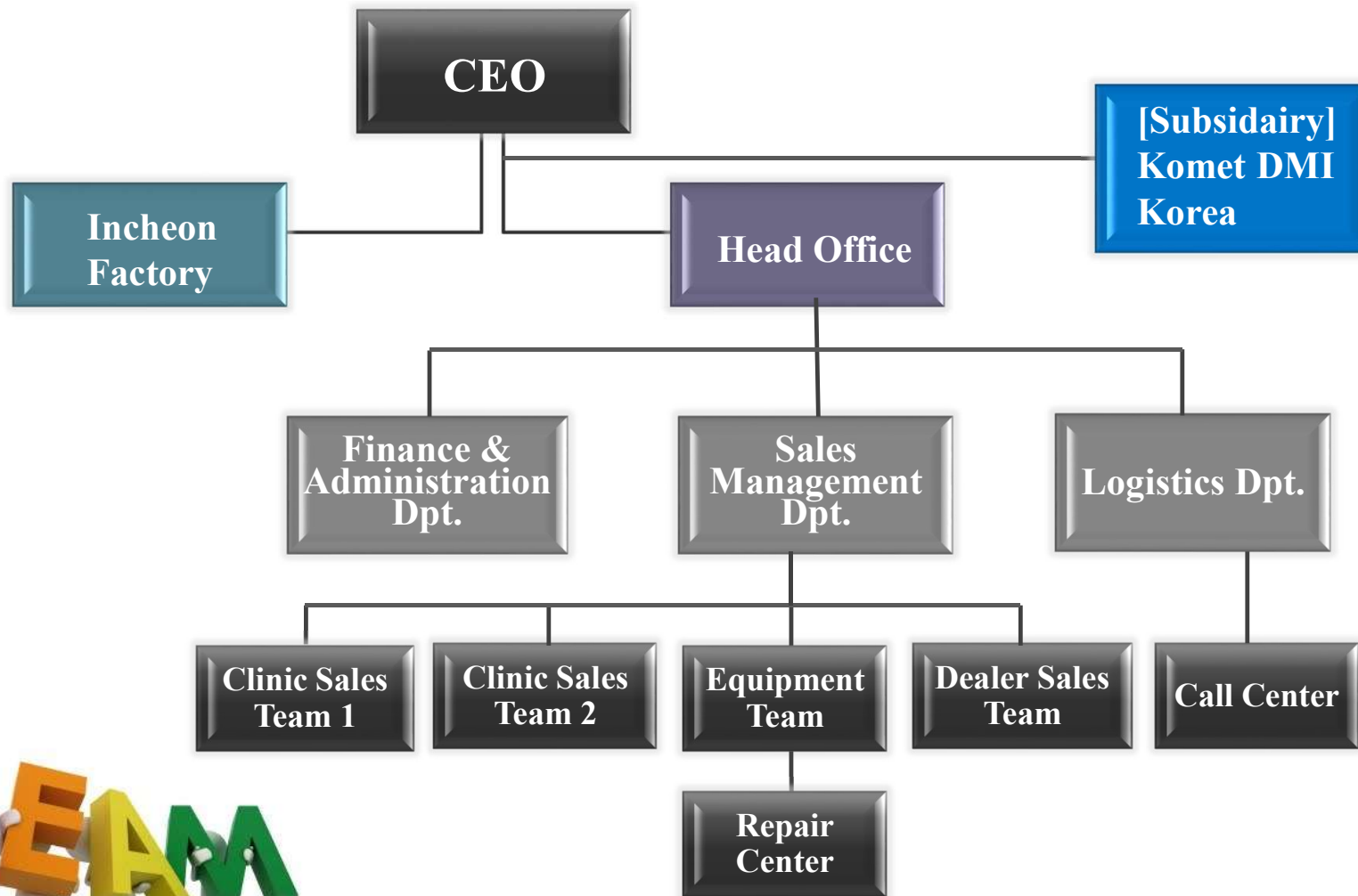
Company History

I. Introduction

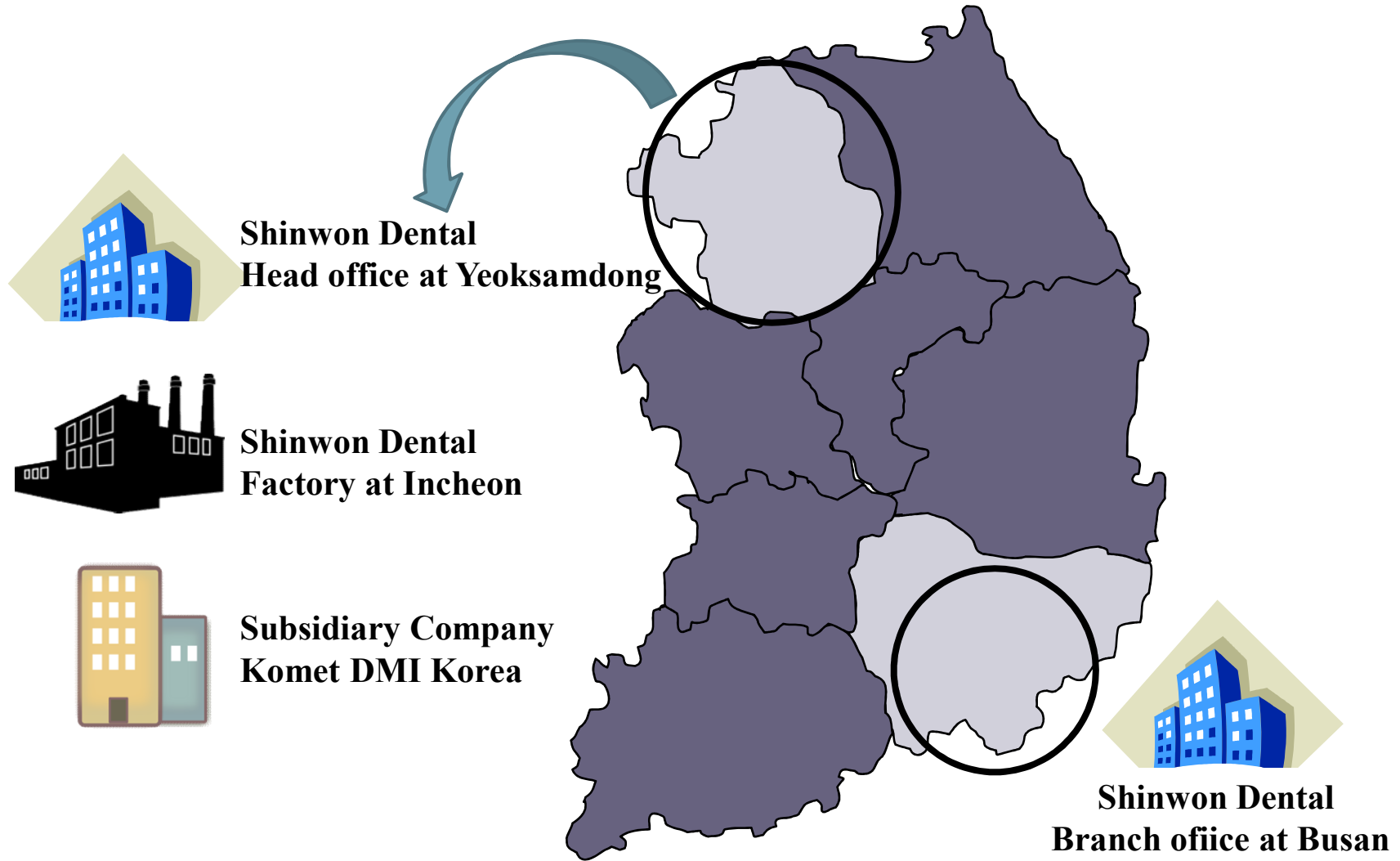


Organization

I. Introduction



Location



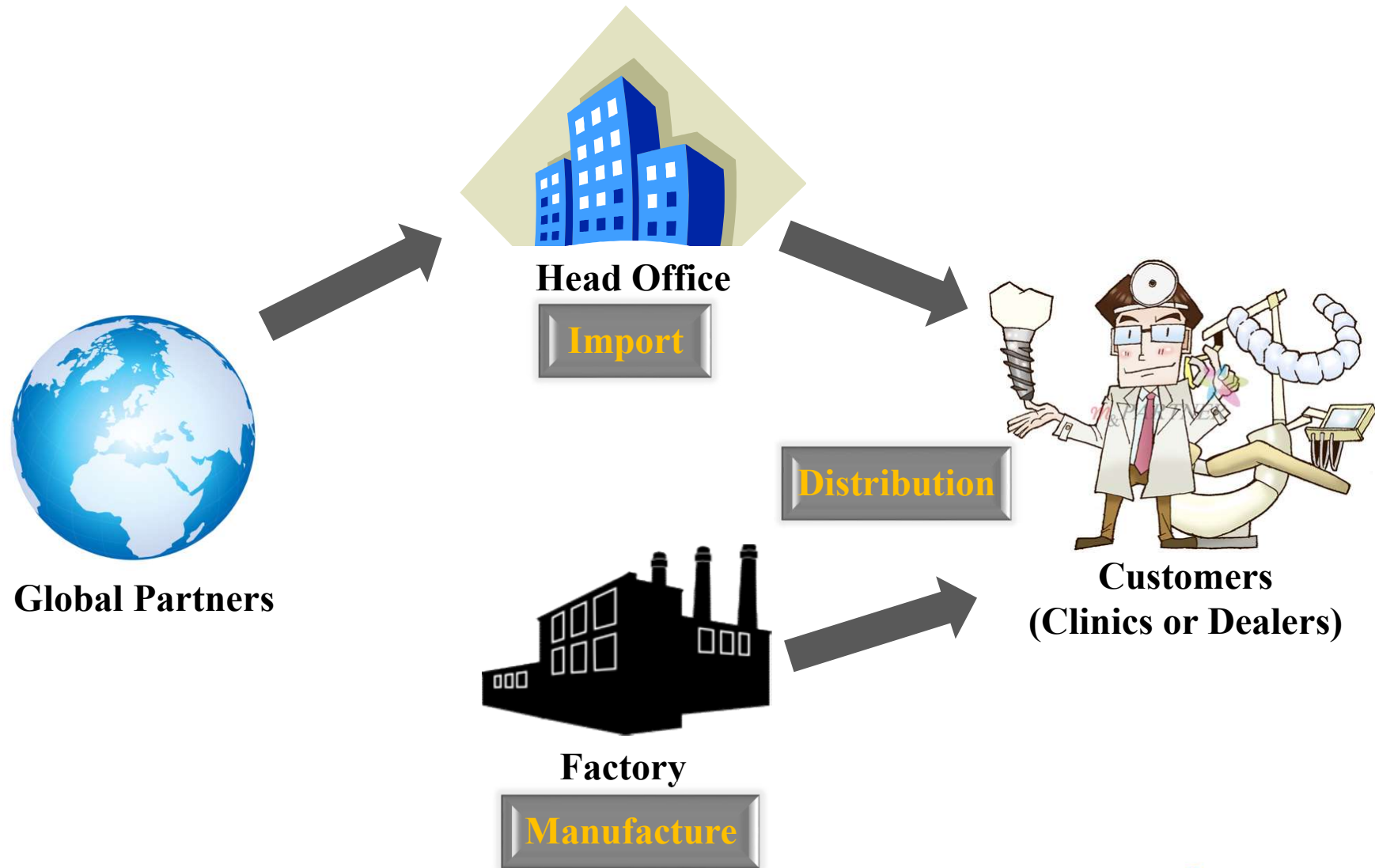
Global Partners

I. Introduction



Type of Business

II. Main Business



“Provision Dentists with Total Solutions for Their Practice”



Dental Materials



Dental Equipment



Hygiene Items



Office gown & shoes



Dental Anesthetic

R&D

II. Main Business

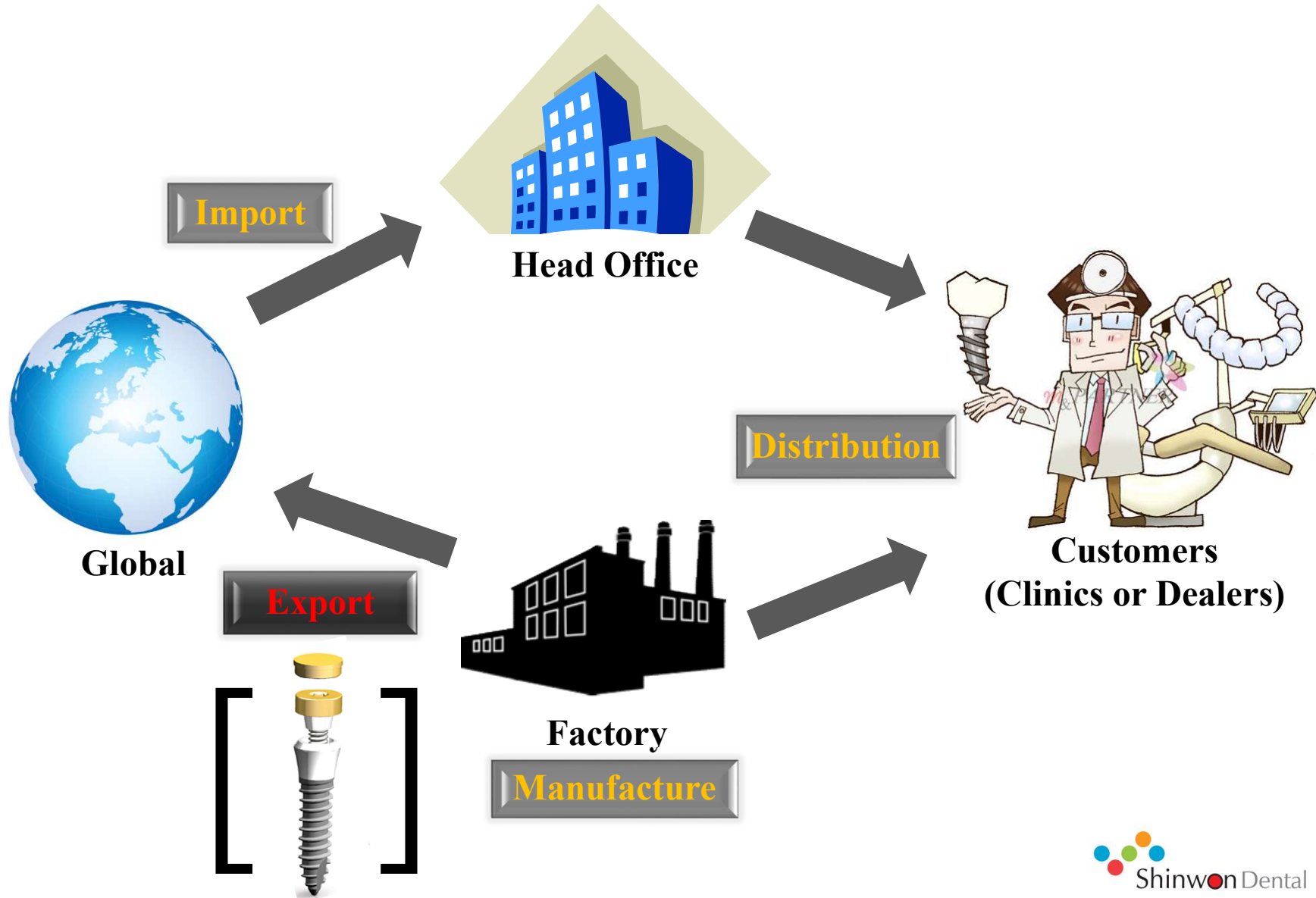


Manufacture



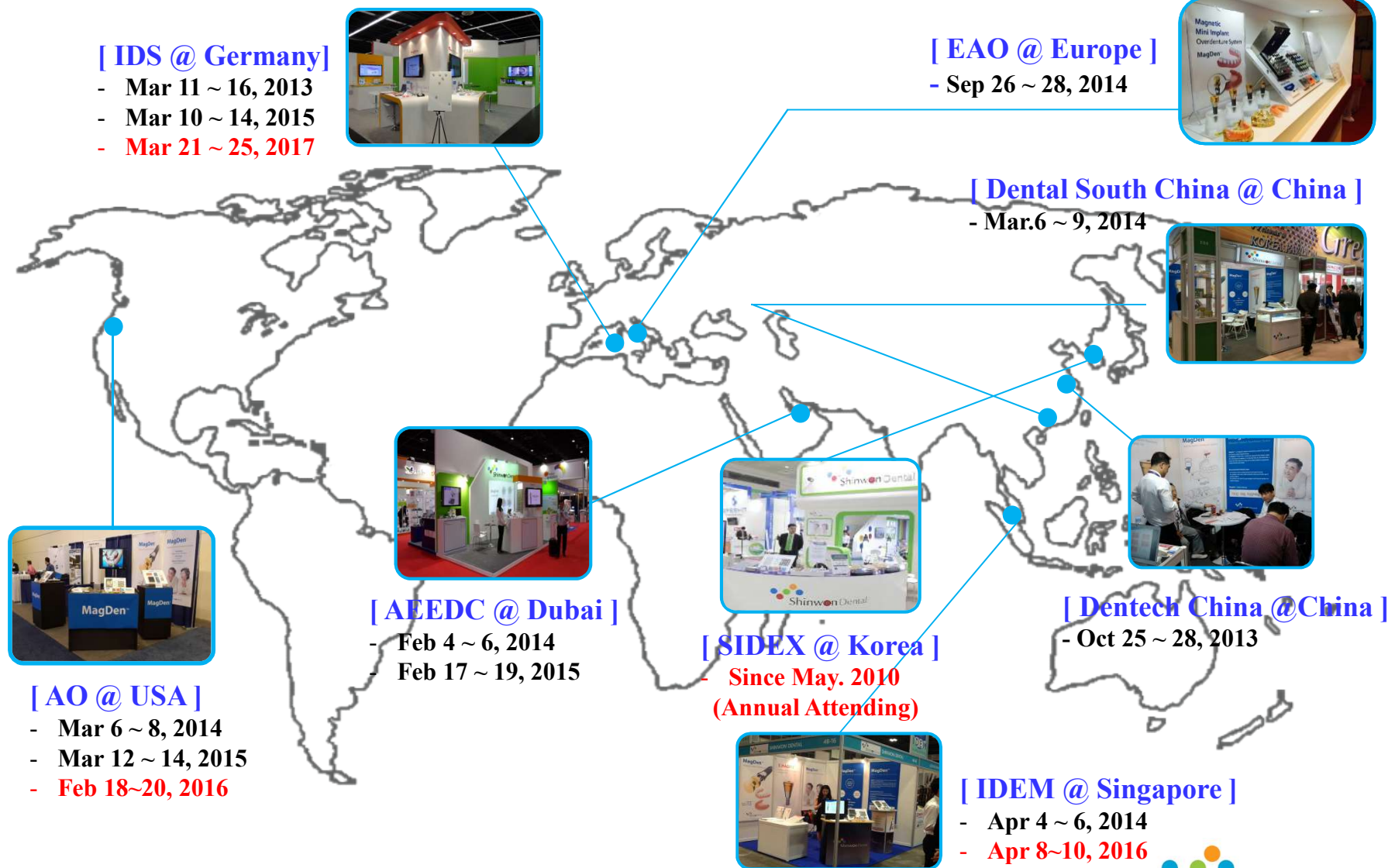
Business Expansion

III. Vision



Global Exhibition

III. Vision



“Cooperation & Share of Value”



&

