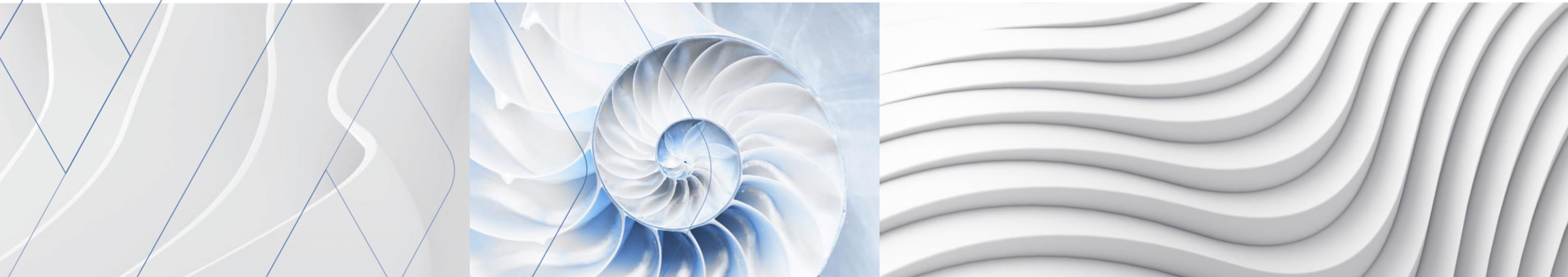




# ModuleWorks

Get There Faster.



## ModuleWorks Digital Dentistry

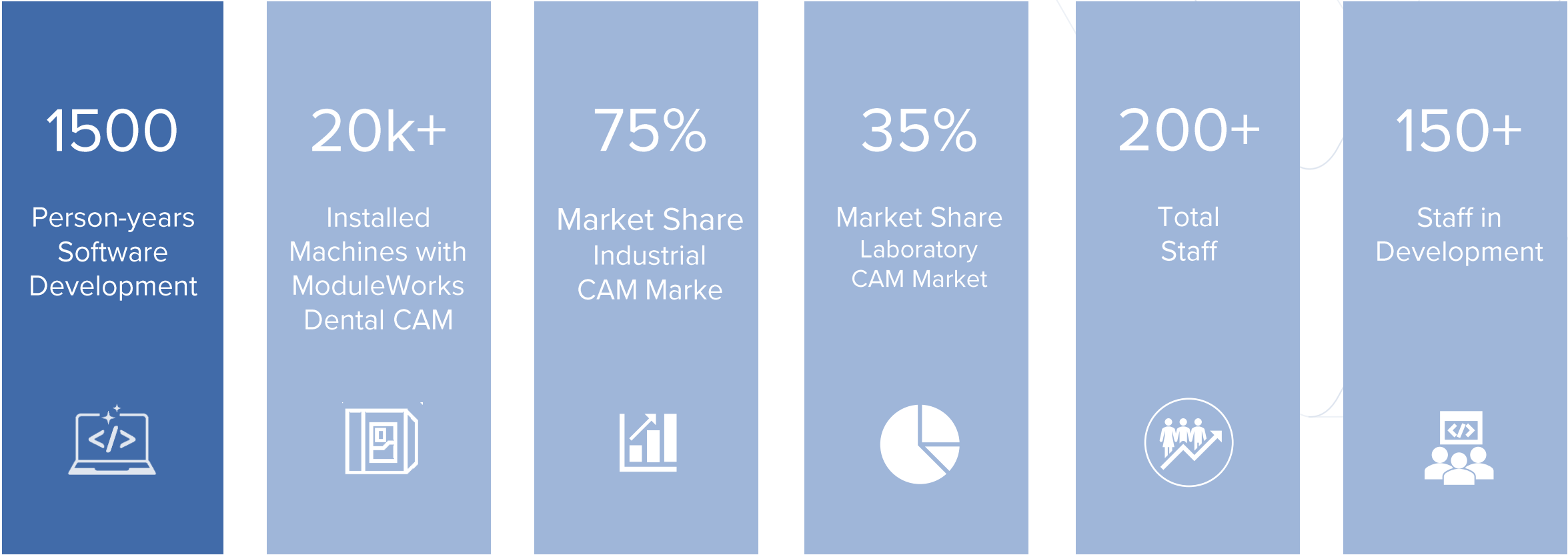
### Company Presentation



# Introduction to ModuleWorks



# ModuleWorks Key Facts & Figures



# Great Partners to Work with





# ModuleWorks Business Areas

Digital  
Manufacturing



Digital  
Factory

CAM Automation  
& Digital  
Dentistry



Additive  
& Process  
Technologies





# ModuleWorks Business Areas

CAM Automation  
& Digital  
Dentistry

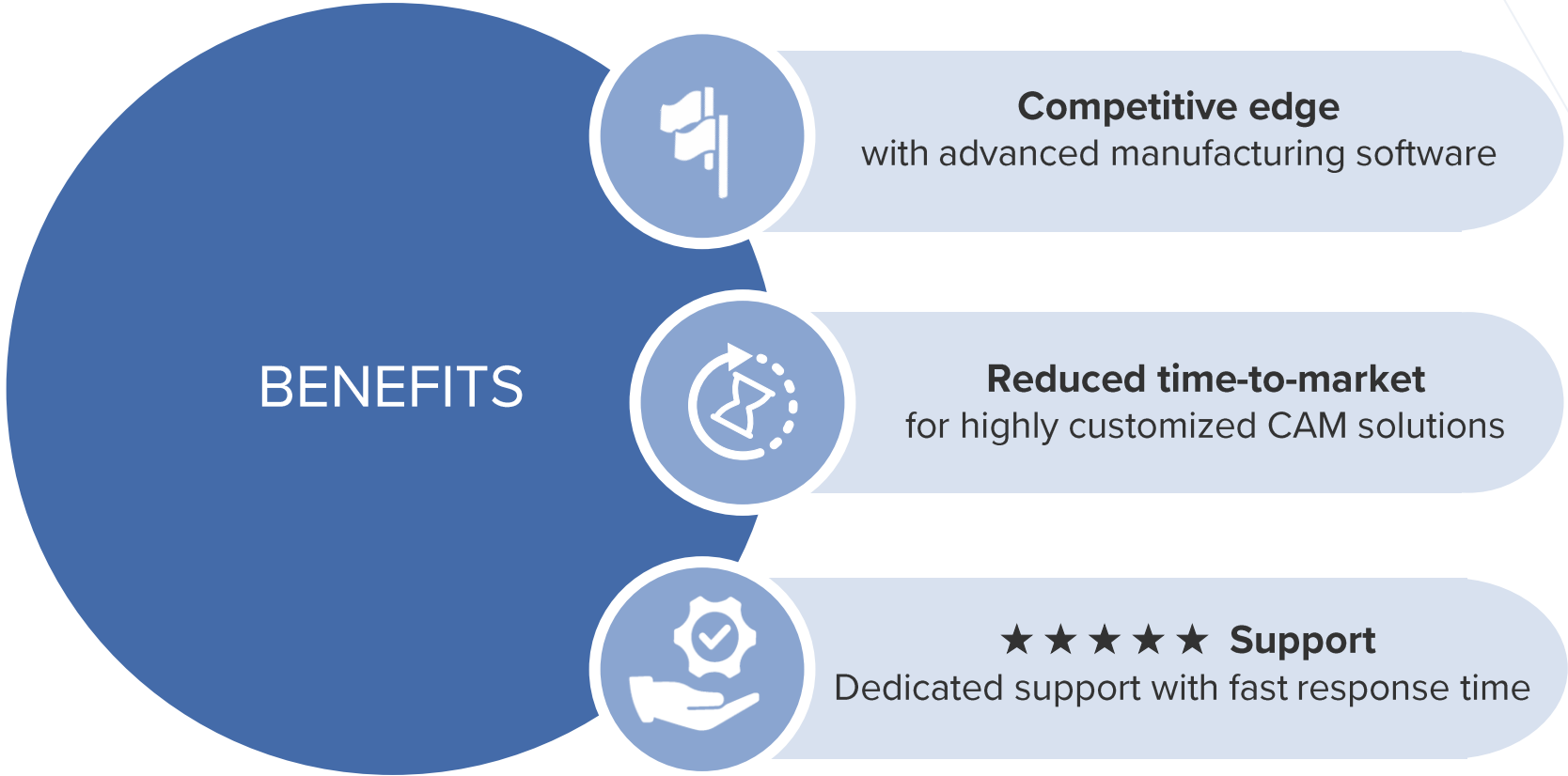




Why choose ModuleWorks Digital Dentistry?



# Benefits: Licensing ModuleWorks Digital Dentistry

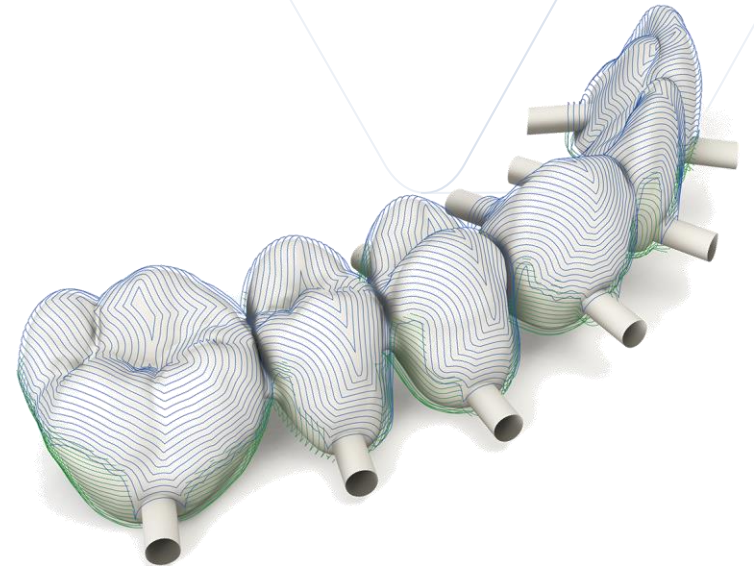






# Why choose ModuleWorks Digital Dentistry?

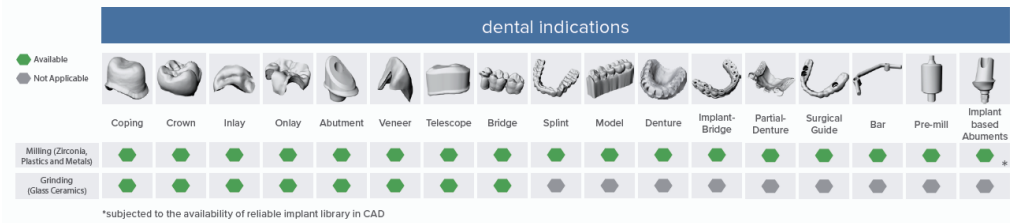
“Dental machine builders, CAD/CAM vendors and system integrators who want to **differentiate** themselves in digital dentistry can **quickly** and **seamlessly** integrate ModuleWorks Dental CAM to **address their custom requirements** and benefit from the most advanced, high-performance manufacturing technology.”



# Challenges in dental CAD/CAM

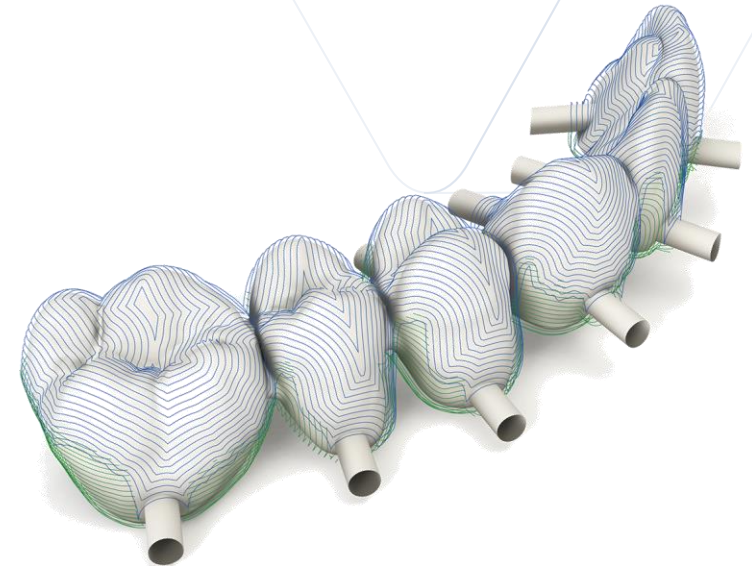
- Fabrication of new dental indications need to be supported quickly
- Full level of automation is required to succeed
- Each vendor may have a different USP which has to be complemented with lean manufacturing technology
- A wide range of manufacturing technologies are required (grinding, milling, additive, hybrid)

Indication Spectrum



# Introducing ModuleWorks Digital Dentistry

- **A dedicated engineering team for digital dentistry:**  
Consists of Product Managers, R&D, and Application Engineers
- **Works closely with ModuleWorks development teams:**  
Over 150 developers working on the entire manufacturing sector
- **Creates a fully validated, automated CAM solution:**  
According to the custom requirements of each partner
- **Works closely with software and hardware vendors:**  
Ensuring that that all goals in digital dentistry are aligned



# What are ModuleWorks objectives for Digital Dentistry?

## 1. Increase performance & efficiency in CAM for laboratories & clinics:

- Drastically reduce the “design-to-indication” time
- Reduce material wastage

## 2. Enable more precision in the manufacture of dental indications:

- Better surface quality for the full range of dental indications

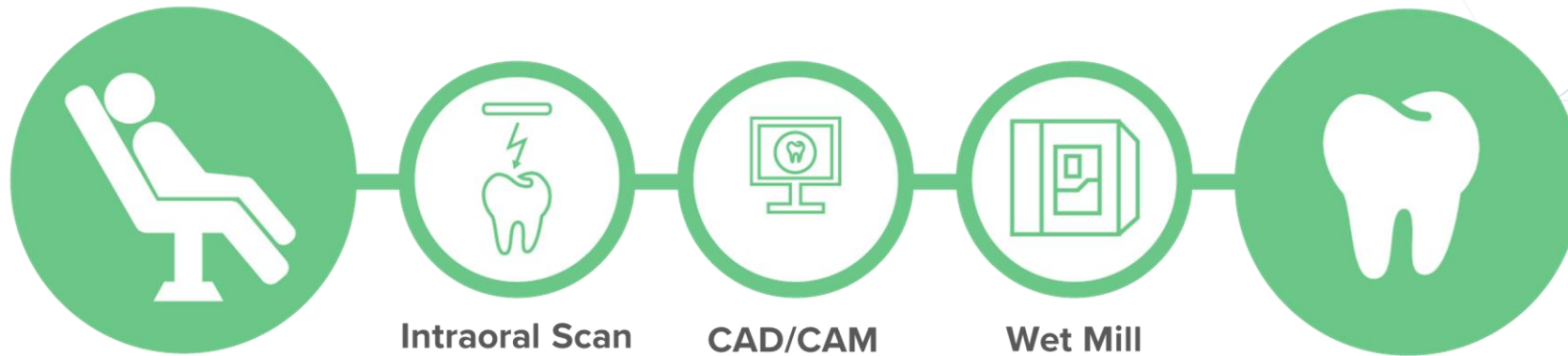
## 3. Simplify the manufacturing workflow:

- Solutions for additive & subtractive manufacturing and simulation
- ‘Right first time’ results using automated strategies and feedback of results



# How does these benefit the patient?

1. First-time-right indications: comfort and aesthetics
2. More accessibility to digital dentistry: dental restorations, smile design and dental implantology
3. Less waiting time/chair time for patient enabling “single-visit-restorations”





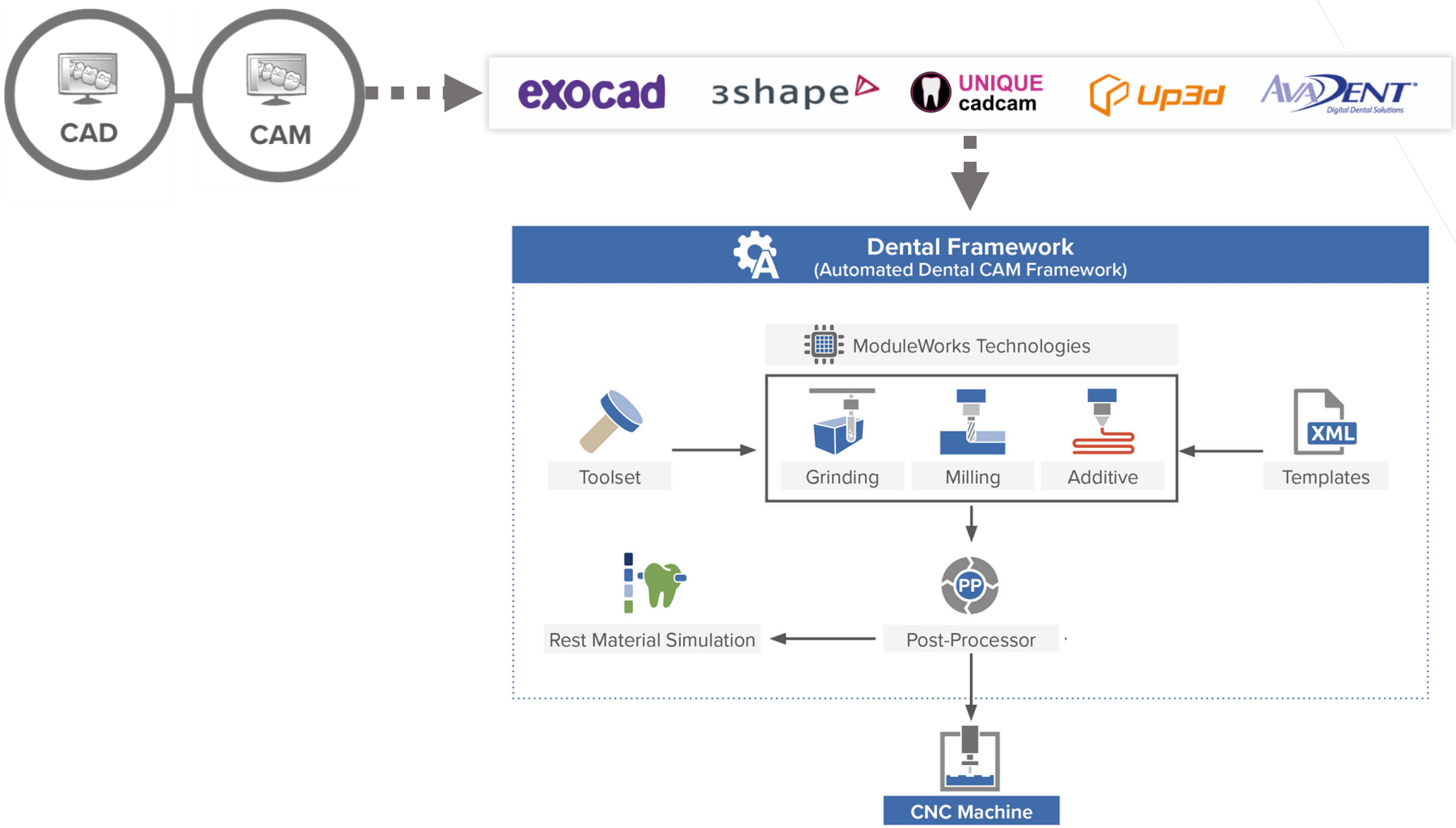


## ModuleWorks Dental CAM Portfotio



# ModuleWorks Dental CAM Framework

- Dental CAM Framework can be integrated into your own CAM Nesting environment



# ModuleWorks White-Label CAM Application

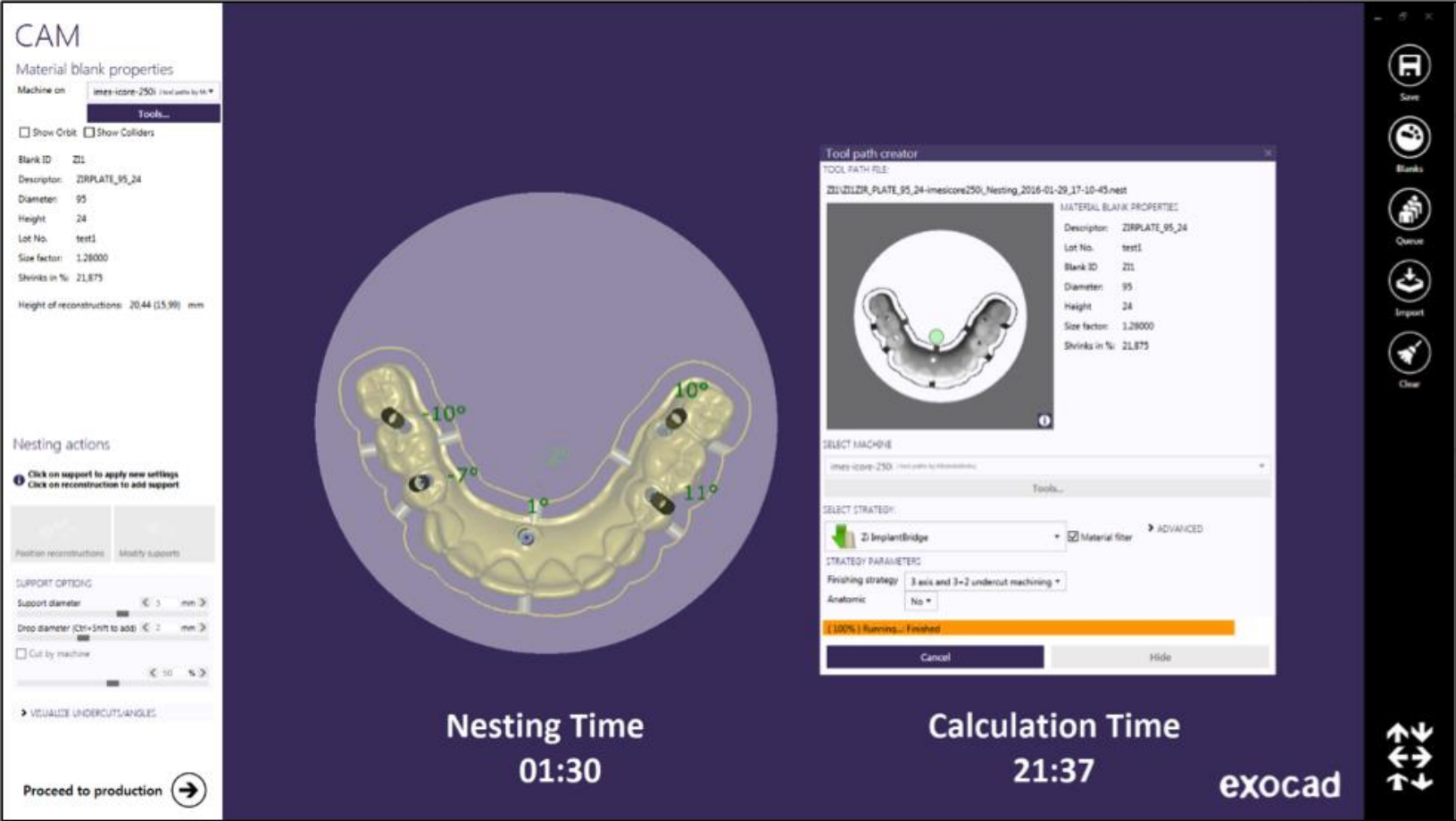
- Standalone CAM Application which can be re-branded





# ModuleWorks White-label exocad integrated CAD/CAM

- exocad exocam: integrated CAD/CAM Application which can be re-branded





# ModuleWorks

Get There Faster.

[www.moduleworks.com](http://www.moduleworks.com)  
[info@moduleworks.com](mailto:info@moduleworks.com)

Also follow ModuleWorks on:

