

The future of dentistry is digital. Discover it now.

Latest generation 3D printers and materials
for dental clinics and laboratories.





DWS is an Italian company that designs and manufactures systems for 3D printing, together with specific software and materials for professional use by dentists and dental technicians. DWS develops processes to help dental offices and laboratories undertake or complete digitization, effectively deploying resources, reducing costs and increasing competitiveness.

DWS hold ISO 9001:2015 and ISO 13485:2016 certification, which attests to its compliance with all regulatory and quality requirements in the medical device industry.

MISSION

Our mission at DWS is to develop 3D printers and materials to produce objects of the highest quality with unparalleled characteristics, facilitating the digital transition for companies wanting to innovate and become increasingly competitive on the market.

ABOUT US

Quality and continuous innovation are the distinctive features of DWS. Since 2007, the company has filed more than 250 patents for industrial property, technology and design.

DWS exports 80% of its products to more than 60 countries around the world, helping to reducing time to market and lowering operating costs, while increasing competitiveness.

TABLE OF CONTENTS

COMPANY

The company 1

DFAB TECHNOLOGY

DFAB technology 6

WORKFLOW

Workflow 8

DFAB/LFAB

DFAB Chairside 10

DFAB Desktop 12

LFAB 14

DCURE

DCURE 16

DFAB/LFAB MATERIALS

Materials and cartridges 18

DFAB technology/software 19

Irix Max 20

Irix Plus 22

Temporis 24

Irix Z 26

PRINTERS

XFAB 2500PD 30

XFAB 3500PD 31

POLYMERIZERS

UV curing unit 32

XFAB SERIES MATERIALS

Digital models 34

Models for thermoforming aligners 36

Surgical guides 38

Medical imaging 40

Castable resin and pressed ceramic prostheses 42

Castable partial frameworks 44

Trays 46

Gingival and soft tissue masks 47

TECHNICAL SHEETS

Printer data sheets 48

Material data sheets 50



DFAB





DFAB®

A revolution in the dental industry.
Minimally invasive restorative technique on natural teeth
and implants.

Advantages

- Fabrication of permanent or temporary esthetic anatomic crowns and crowns on implants, bridges, veneers and inlays in hybrid ceramic or composites in a single visit
- Excellent translucent esthetic results thanks to the adaptive gradient (patented technology, dedicated NAUTA PHOTOSHADE software), which allows customization of the restoration
- TSLA patented technology enabling high-speed fabrication
- Highly viscous materials, from hybrid ceramics to future zirconium oxide-based materials
- Restoration accuracy (laser additive technology, i.e. no specific insertion axes) and better management of undercuts than with subtractive technology
- Low maintenance
- Safe cementing of materials in the patient's mouth with minimal contact surface preparation
- Unique properties of permanent dental restorations with the Irix series

Features

- Intuitive, easy-to-use interface for the best user experience
- 65 types of disposable cartridges
- Connection to a single cloud architecture for complete traceability of operations, materials, and cartridges
- NAUTA PRO software (optional) to optimize the number of restorations per cartridge
- DFAB meets the requirements of Industry 4.0
- A functional, minimal, eye-catching design awarded "Best of the Best" at RedDot Award 2018

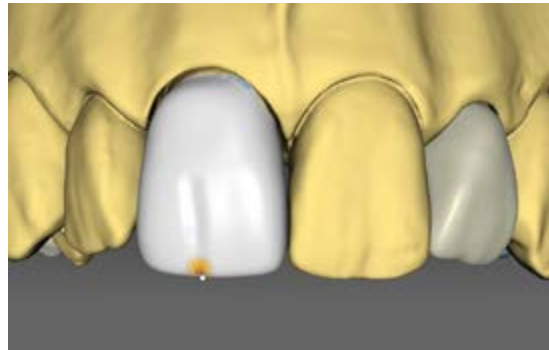
DIGITAL WORKFLOW IN 10 SIMPLE STEPS

Digital workflow for DFAB®.

DWS developed the technology for DFAB with the primary objective of reducing the time and steps necessary to create dental prostheses, while making the devices easy to control and within reach of operators who do not possess specific in-depth technical knowledge.



01 - Intraoral scan



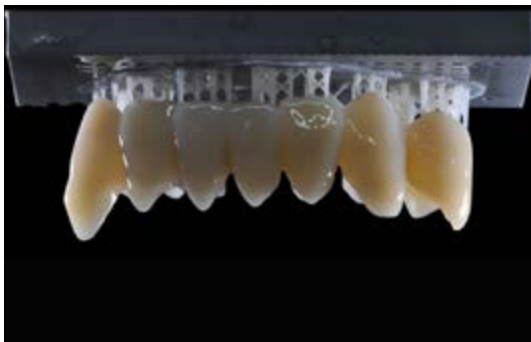
02 - CAD modelling



03 - Gradient preparation



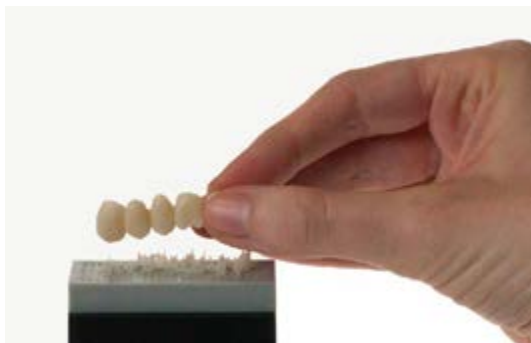
04 - Cartridge insertion



05 - Production



06 - Washing



07 - Support removal



08 - UV stabilization



09 - Finishing



10 - Restoration in the patient's mouth

DFAB CHAIRSIDE

Conservative, Prosthetics, Implantology



DFAB®
CHAIRSIDE



reddot award 2018
best of the best

DFAB[®] Chairside

Additive technology at your side
for in-office restorations in a single visit.

DFAB Chairside is the **perfect solution** for dentists with an intraoral scanner and CAD design software, who work with minimally invasive conservative techniques. DFAB Chairside can produce permanent translucent anatomic and implant-supported crowns, bridges, inlays, and veneers in **hybrid ceramic** in just a few simple steps.

Advantages

- Permanent hybrid ceramic restorations in a single visit
- Restoration precision and fit, process repeatability
- Produces bridges of up to 10 elements in less than 30 minutes
- Minimally invasive technology for natural teeth and implants
- Restoration may be customized during fabrication
- Disposable cartridges in 3 formats for safety, hygiene and a better user experience
- It is silent, does not produce dust and requires no maintenance, equipment or tool changes
- Ready for future zirconium oxide-based materials

Features

- Compatible with all intraoral scanners and dental CAD/CAM systems
- Connection to the cloud to ensure material traceability
- Produces up to 10 individual units with the L cartridge
- All-in-one device with practical and intuitive user-friendly touch-screen controls
- High-speed additive manufacturing system (TSLA, Tilting Stereolithography) with software NAUTA PHOTOSHADE permits photo-reproduction of the natural tooth

PHOTOSHADE[®]
ADAPTIVE GRADIENT

BUILT-IN PC
TOUCH SCREEN

DFAB DESKTOP

Conservative, Prosthetics, Implantology



DFAB®
DESKTOP



DFAB[®] Desktop

Compact tabletop version.

DFAB Desktop is DWS's 3D solution for dental offices, dental clinics and dental laboratories.

Advantages

- Permanent translucent hybrid ceramic restorations in a single visit
- Permanent composite restorations in a single visit
- Produces bridges of up to 10 elements in less than 30 minutes
- PHOTOSHADE technology: reproduction of tooth color patterns, from incisal to cervical areas
- Ready for future zirconium oxide-based materials

Features

- Connects to your computer and starts easily with proprietary NAUTA PHOTOSHADE software
- Quickly and repeatably produces dental prostheses, even translucent ones with a natural appearance
- Produces up to 10 individual units with the L cartridge
- Reduces the number of required steps compared to traditional methods
- All devices in the DFAB family are connected to a single cloud architecture, allowing for absolute traceability of the interventions and cartridge materials

PHOTOSHADE[®]
ADAPTIVE GRADIENT

COMPACT FORMAT
TABLETOP

LFAB

Conservative, Prosthetics, Implantology

LFAB®





Entry level monochrome tabletop version.

With an excellent quality/price ratio, **LFAB** is aimed at dental laboratories, offices and clinics already working with an intraoral scanner and CAD design software.

Advantages

- Permanent restorations, even translucent monochrome ones, in less than 20 minutes
- Complete range of restorative materials, including hybrid ceramic and hybrid composites
- Disposable monochrome cartridges
- Ideal for quickly producing permanent elements for further customization
- Ready for future zirconium oxide-based materials

Features

- LFAB produces monochrome dental restorations in less than 20 minutes
- It has a safe material handling system with easy-to-use disposable cartridges
- Quickly and repeatably produces dental prostheses
- Produces up to 10 individual units with the L cartridge
- Reduces the number of required steps compared to traditional methods
- Ideally combined with DWS's XFAB lab printers for studying, designing, and fabricating dental models, surgical guides, and more

SHADES
MONOCHROME, FOR EXAMPLE
A1, A2, A3, A3.5, B1, N

PRECISION
PRINTING

PHOTOPOLYMERIZATION

For DFAB Chairside, DFAB Desktop and LFAB



TECHNICAL SHEET

| | DCURE® |
|--------------------------------|---|
| Ventilation | Internal forced ventilation |
| User commands | Button with colored light Preset polymerization programs Open door safety feature |
| Polymerization area dimensions | Ø 70 mm x 40 mm |
| Machine size | 150 mm x 150 mm x 153 mm |
| Weight | 2.2 kg |
| Power consumption | 60 W |
| Input voltage | 24 VDC with external power supply included 110-240 VAC, 50-60 Hz |

Technical specifications subject to change without notice.

DCURE[®]

Photopolymerization unit combining UV light and heat for post-treatment of the restoration.

DCURE is a post-treatment device using **hybrid technology** designed for curing Irix Max, Irix Plus and Temporis materials. The evenly distributed UV light and heat inside the polymerization chamber ensure that objects are hardened perfectly while preserving their appearance.

Advantages

- Optimal curing of Irix and Temporis materials
- Compact, ergonomic design
- UV and heat treatment in single device
- Easy to use and maintain

Features

- 7-minute fully automatic stabilization cycle
- Treatment program operated with the simple click of a button. Program can be updated via USB
- Restoration placed in a Pyrex glass container that can be easily washed and sterilized
- Timed settings
- Door opens automatically at the end of the cycle
- The DCURE device is recommended for restorations produced with DFAB Chairside, DFAB Desktop and LFAB printers

MATERIALS AND CARTRIDGES

An extended range of materials
in convenient disposable cartridges.

DWS offers the **widest range of materials in the industry**, in **65 types of innovative disposable cartridges** for unprecedented flexibility and a better user experience.

- Certified materials designed for permanent restorations made of **hybrid ceramic** and **hybrid composites**
- Disposable monochrome cartridges in "S" (1-2 elements*), "M" (3-4 elements*), and "L" (5-6 elements*) sizes
- Disposable Photoshade cartridges in "S" (1-2 elements*), "M" (3-4 elements*), and "L" (5-6 elements*) sizes
- Great ergonomics and simple management
- No maintenance or cleaning of the printing area

Restorations can be customized with biocompatible composites and/or colors and glaze.

With the NAUTA Pro software (optional), multiple files can be positioned on the virtual printing platform, optimizing cartridge's material consumption.

* purely indicative



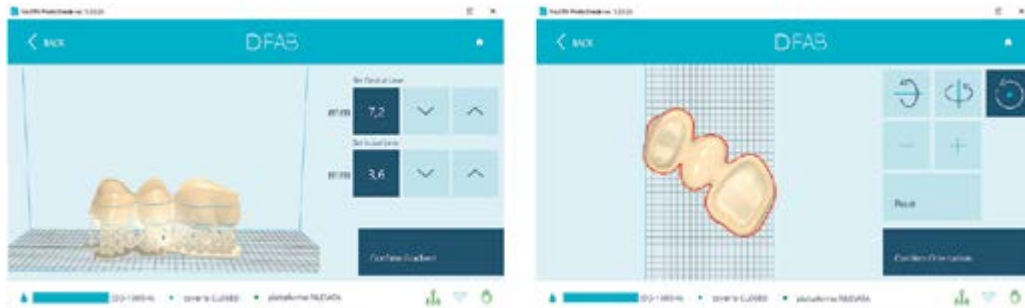
PHOTOSHADE[®], AUTOMATED ESTHETICS

Beyond the limit of multilayer restorations.

PHOTOSHADE, the system used in DFAB, reproduces the specific color of patient's teeth in terms of pigmentation and shading, giving the prosthesis an esthetically realistic appearance.

The operator selects the extremes of the required shade by using color codes, for example, from A1 to A3.5, along with the **exact position and width of the gradient** meant in the custom restoration. This process makes the DFAB method unique.

The software handles undercuts in the best possible way, since there are no specific insertion axes as with CAD/CAM milling systems.



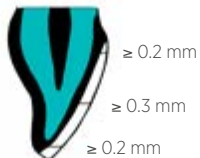
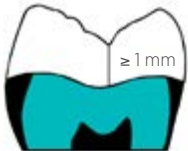
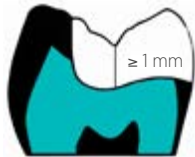
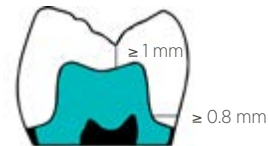
NAUTA PHOTOSHADE presents **the restoration preview in real time**. It sends the file to the printer and uses TSA (Tilting Stereolithography) technology to produce the most realistic result possible in less than 20 minutes. This technology, protected by more than 150 patents, creates a continuous flow of material and enables the use of highly viscous materials such as ceramic.

- It can be easily used even by minimally trained operators thanks to the step-by-step workflow, which intuitively guides users through the printing process
- Fully visual selection system, from gradient to shade position

The resulting prosthesis is ready for insertion in the patient's mouth after a few final procedures: easy removal of the supports, washing in alcohol, a short stabilization cycle in the DCURE device and finishing.

MATERIALS

Conservative, Prosthetics, Implantology



With Irix Max, TSLA printing technology and PHOTOSHADE software, permanent translucent ceramic restorations can be produced quickly with the highest esthetic quality.

IRIX[®] MAX

HYBRID CERAMICS FOR PERMANENT TRANSLUCENT RESTORATIONS



Irix Max is a revolutionary biocompatible material used to produce esthetically pleasant permanent restorations that stand out for their translucency, high strength and precise fit.

This material has excellent **mechanical resistance to fracture and wear in occlusion**.

Irix Max allows minimally invasive restorations on natural teeth and implants.

Advantages

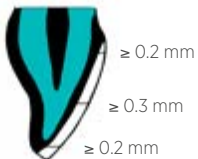
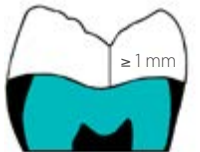
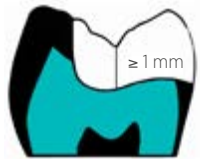
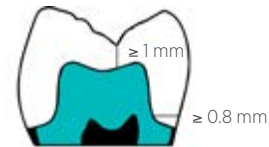
- Superior esthetics
- High mechanical fracture resistance, enabling reliable and repeatable restorations
- High wear resistance in occlusion
- Direct production of individual and/or implant-supported crowns, bridges, inlays and veneers, even with reduced thicknesses
- PHOTOSHADE technology makes it possible to faithfully reproduce the appearance of natural teeth
- Cost-effective restorations thanks to fast production and effective finishing with DCURE
- Accurate restorations - detailed, precise and thin - thanks to a mixed-structure material similar to natural teeth

Features

- Available in monochrome colors e.g. A1, A2, A3, A3.5, B1, N, and - only on DFAB - with multicolor PHOTOSHADE technology
- Class IIa medical device with CE marking
- Total-etch or selective etching adhesive cementation are recommended

MATERIALS

Conservative, Prosthetics, Implantology



With Irix Plus, permanent restorations have a natural appearance thanks to different chromatic shades and possible further customization.

IRIX[®] PLUS

HYBRID COMPOSITES FOR PERMANENT RESTORATIONS



Irix Plus is a biocompatible **hybrid composite material** with **high elasticity**.

It can be used to produce permanent restorations in different monochromatic shades thanks to the unique PHOTOSHADE adaptive gradient.

Restorations made with Irix Plus stand out for their **esthetics** and superior **compressive strength values**.

It is an ideal material for clinicians, who want to further characterize it with biocompatible products (lacquer, glaze, etc.) and/or commercially available color stains.

Advantages

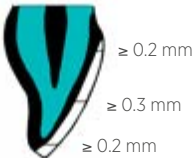
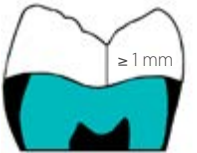
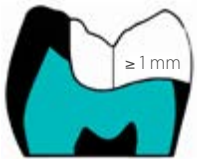
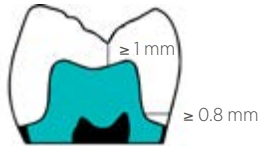
- Hybrid composite with high elasticity for esthetic solutions
- High dimensional stability
- Superior surface quality
- Precise fit
- Direct production of individual and/or implant-supported crowns, bridges, inlays

Features

- Available in monochrome colors e.g. A1, A2, A3, A3.5, B1, N, and - only on DFAB - with multicolor PHOTOSHADE technology
- Class IIa medical device with CE marking
- Total-etch or selective etching adhesive cementation are recommended

MATERIALS

Conservative, Prosthetics, Implantology



Long term, natural-looking temporary restorations.

TEMPORIS[®]

COMPOSITES FOR LONG TERM RESTORATIONS



Natural-looking long term temporary crowns and bridges **produced directly**.

The esthetic qualities of **Temporis** composites imitate the true color of teeth.

The exclusive **PHOTOSHADE** system available for DFAB also allows to set the adaptive gradient.

Advantages

- Direct production of crowns, bridges, inlays and veneers
- Fewer steps than traditional methods
- Quick fabrication and low operating costs

Features

- Available in monochrome colors e.g. A1, A2, A3, A3.5, B1, N, and – only on DFAB - with PHOTOSHADE technology for exact reproduction of the adaptive gradient
- Class IIa medical device with CE marking
- Total-etch or selective etching adhesive cementation are recommended



A small revolution for the permanent restoration in zirconia.
Precise and accurate, the restoration in Irix Z can be printed with DFAB in a simple and intuitive way.

IRIX[®] Z

RESTORATIONS IN ZIRCONIUM OXIDE

PREVIEW

Printing times and production practices totally transformed by DWS' new material.

Irix Z* is one of the most recent and innovative finding by DWS research. It is an advanced liquid zirconia that, combined with the DFAB printer and Photoshade technology, allows the creation of accurate permanent restorations with all the advantages of the additive technique.

* The product is not yet certified and cannot be sold until the formal certification process is completed.





PRINTERS

Conservative, Prosthetics, Implantology, Orthodontics, Guided Surgery, Maxillofacial Surgery



XFAB® 2500PD

Applications

Permanent and temporary restorations, dental models, models with removable dies, models for implants with analogs, models for thermoforming aligners, surgical guides, castable models, castable partial frameworks, medical imaging, gingival masks/soft tissue models.

XFAB 2500PD

Premium printing quality
for small and medium-sized labs.

Equipped with very high resolution, **XFAB 2500PD** is **ideal for small and medium-sized dental laboratories** that demand **premium quality**.

Advantages

- "Plug & Play" system
- Excellent productivity and precision with a great quality/price ratio
- Validated digital workflow from scanning to finishing
- Designed for the needs of small and medium-sized dental and orthodontic laboratories
- Full range of materials specifically developed for the dental sector, including Temporis and Irix Plus
- Quick and easy production of permanent prostheses made of hybrid composites
- Excellent surface quality of the models

Features

- TTT (Tank Translation Technology) system to optimize consumption of the resin
- Ideal in combination with DFAB for the study phases and fabrication of clinical cases

SOFTWARE

NAUTA® AND FICTOR® INCLUDED

Ø 180x180

WORKING AREA X, Y, Z (mm)

XFAB 3500PD

High productivity and precision,
zero compromises.

XFAB 3500PD combines **great precision** and high performances in terms of **productivity**. It is the perfect choice for large dental laboratories and milling centres.

Advantages

- Validated digital workflow from scanning to finishing
- Reliable, high-speed and precise stereolithographic printer for repeatable, high-quality results
- Full range of materials specifically developed for the dental sector, including Temporis and Irix Plus
- "Plug & Play" system

Features

- Integrated PC with retractable touch screen monitor
- TTT (Tank Translation Technology) system to optimize consumption of the resin



XFAB® **3500PD**

Applications

Permanent and temporary restorations, dental models, models with removable dies, models for implants with analogs, models for thermoforming aligners, surgical guides, castable models, castable partial frameworks, medical imaging, gingival masks/soft tissue models.

BUILT-IN PC
WIDE RANGE OF MATERIALS

160x160x180*
WORKING AREA X, Y, Z (mm)
* with chamfered corners

PHOTOPOLYMERIZATION

For the XFAB series



TECHNICAL SHEET

UV curing unit "S2"

| | |
|---------------------------------|---|
| Suitable for polymerization of: | Individual models |
| Ventilation | Internal forced ventilation |
| User commands | On/Off button Timer Open door safety device |
| Timer setting | 0 to 30 minutes |
| Curing volume | 160 x 160 x 160 mm |
| Machine size | 265 x 300 x 330 mm |
| Weight | 11.8 kg |
| Power consumption | 35 W |
| Power supply | 90–264 V / 50–60 Hz |

UV Curing Units

UV polymerization devices
to complete the secondary solidification.

Although perfectly formed, models built with DWS 3D printers still require a further exposure to a UV source to complete polymerization and stabilize their structure.

Advantages

- Highly uniform exposure
- Easy to use and maintain
- Timed settings

MATERIALS

Conservative, Prosthetics, Implantology, Guided Surgery



The use of Precisa and Invicta materials enables the production of precise, perfectly smooth models.

DIGITAL MODELS

Perfect, extremely precise reproductions for an incomparable fit and unique surface quality.

DWS digital workflow, that can be integrated with major CAD software and third-party scanners, enables the production of **accurate, solid and precise models**.

DWS dental models are reliable and appropriate tools, the result of an innovative workflow chosen today by top professionals and made possible by the advanced characteristics of **Precisa** and **Invicta** exclusive materials developed and produced by the company.

Advantages

- Detailed reproduction at the highest resolution for a precise fit
- Perfect accuracy for rigorous testing, such as analogs positioning
- Reduced cost and fabrication time

Features

- Models with removable dies for a perfect fit
- Excellent bases for the correct positioning of any type of analog and/or implant, even the most complex
- Perfect dimensional stability over time
- Wide choice of colors and functional features

MATERIALS

Orthodontics



3D models using DWS printers.
The aligner is obtained after subsequent thermoforming and trimming .



The resolution allows for countless applications in this field.

MODELS FOR THERMOFORMING ALIGNERS

Perfect 3D bases for producing effective, lightweight, invisible aligners.

In an efficient, open system in which DWS solutions are integrated with the most common software and devices, **Therma and Invicta** materials enable the quick, low-cost production of **3D dental arches** and **orthodontic models**.

The materials are non-deformable and have a high resistance to thermoforming: they are also easy to trim on the marginal contact areas and interproximal spaces.

With this thorough basis, the professional can produce transparent polycarbonate aligners that are perfectly adhering to the patient's dental conformation.

Advantages

- Quick fabrication
- Low cost
- Accuracy and versatility: high-quality reproduction in all treatment steps

Features

- Non-deformable, highly resistant orthodontic arches

MATERIALS

Guided Surgery, Implantology, Prosthetics, Gnathology



The anatomical correspondence guaranteed by DS3000 favours the highest precision, even when inserting sleeves.



SURGICAL GUIDES



Transparency, precision and fit
for fully safe surgeries.

The advanced 3D technology of DWS devices allows the production of high-precision surgical guides in biocompatible **DS3000*** for implant surgery.

Once the sleeves have been inserted, the guides, **ready for use** after disinfection (with peracetic acid), are stable and non-deformable. This guarantees an impeccable fit with the patient's anatomy, an optimal condition for safe and effective surgery.

Advantages

- Highly precise and optimal fit
- Great transparency
- Design, analysis and development can be conducted on models

Features

- Stable, non-deformable material
- Biocompatible material

* Class I medical device with CE marking (ref. Annex VIII Regulation MDR 2017/745)

MATERIALS

Medical Imaging, Maxillofacial Surgery, Guided Surgery



The 3D reproduction of a skull in which size, precision and transparency can be observed. Study models provide a view of the position of the patient's nerves, which is fundamental when studying and planning surgical actions.

MEDICAL IMAGING

Maximum accuracy and transparency,
large size, minimal cost.

Large volumes in extremely short timescales. The entry level printers in the DWS range are capable of **great precision** when reproducing the smallest details, thanks to the transparency of **Vitra 430** and **DS2000**.

They perfectly replicate the patient's anatomical structure as obtained via CBCT (CT) and converted into STL files.

These materials are ideal for creating pre-operative anatomical replicas for maxillofacial surgery and gnathology.

Advantages

- Large anatomical reproductions
- The transparent material provides a view of the anatomical structure and position of the patient's nerves to study and plan surgical actions
- Short production time

Features

- High surface quality
- Resolution and accuracy



The right combination of materials and technology for maximum results in castable dental patterns and for pressed ceramics.

CASTABLE AND FOR PRESSED CERAMIC PROSTHESES

Detailed and economic to produce,
for thin and strong prostheses.

With the exclusive **resins in the Fusia series**, that do not require any additional manual work, DWS 3D printing devices produce accurate dental patterns, castable and for pressed ceramics, that meet all process requirements, enabling the production of **thin, strong and detailed** structures.

Advantages

- Optimal accuracy
- Starting from the models, Fusia series allows to produce thin, detailed structures such as veneers
- Quick and inexpensive

Features

- Not subject to deformation or shrinkage
- High resolution and accuracy

MATERIALS

Removable prosthetics



Stable, accurate, non-deformable. Ideal for casting procedures.

CASTABLE PARTIAL FRAMEWORKS

The ideal way to achieve thinness, accuracy and excellent mechanical properties.

Castable partial frameworks produced using digital technology and advanced **Fusia** materials are highly stable, anatomically accurate and non-deformable, while offering a certain flexibility that facilitates hooking onto the natural teeth without breaking.

They, therefore, guarantee the final products with exceptional **physical and mechanical performances**, satisfying the most stringent requirements for each type of application.

Advantages

- Optimal accuracy
- Excellent non-deformability and fit

Features

- Optimal mechanical properties for casting procedures
- Fusia series enables the construction of detailed parts with high resolution and accuracy

STABLE, STRONG, NON-DEFORMABLE IMPRESSION TRAYS



DS3500 printing material
ensures the highest level of performance.

DS3500* is a **biocompatible material**, ideal for printing **custom-made impression trays**.

Precise and polished 3D printed trays are suitable for any specific impression material and have an excellent fit. Their slight transparency is useful in taking the impression in partial and/or total edentulism cases, as it helps to check the adhesion of the material to the mucosa.

Custom-made impression trays are rigid, stable and **deformation-free** and may be printed in blue and purple.

Advantages

- Dimensional stability and high strength
- Compatible with all impression materials
- Precise and distortion-free impression tray

Features

- Biocompatible material

* Class I medical device with CE marking (ref. Annex VIII of Regulation MDR 2017/745)



GINGIVAL AND SOFT TISSUE MASKS

Complete reproductions of the appearance, functional properties and anatomy of the gingivas.

DWS 3D printing realistically replicates the color, consistency and structure of **gingiva** and **soft tissues**. With the high resolution and precision of the printers, the result is also due to the specific **GL4000** advanced material.

Advantages

- Material's lifelike effects and functional properties
- Effective anatomical reproduction

Features

- Excellent surface quality
- High resolution and definition



TECHNICAL SHEETS



| | DFAB® Desktop | DFAB® Chairside | LFAB® |
|------------------------------------|--|--|--|
| Printing method | Laser – TSLA | Laser – TSLA | Laser – TSLA |
| Working area | 50 mm x 20 mm x 40 mm | 50 mm x 20 mm x 40 mm | 50 mm x 20 mm x 40 mm |
| Laser source | Solid State BlueEdge® | Solid State BlueEdge® | Solid State BlueEdge® |
| Layer thickness | 10-100 microns (depending on the type of material used) | 10-100 microns (depending on the type of material used) | 10-100 microns (depending on the type of material used) |
| Scanning method | Galvanometer | Galvanometer | Galvanometer |
| Software | NAUTA® PHOTOSHADE® | NAUTA® PHOTOSHADE® | NAUTA® LFAB Edition |
| Input file formats | .stl, .nauta, .fictor, | .stl, .nauta, .fictor, | .stl, .nauta, .fictor, |
| Machine size | 300 mm x 300 mm x 307 mm | 480 mm x 480 mm x 1142 mm | 300 mm x 300 mm x 307 mm |
| Weight | 15 kg | 40 kg | 15 kg |
| Operating temperature and humidity | 15°-25°C / 60% | 15°-25°C / 60% | 15°-25°C / 60% |
| Power supply | 24 VDC with 240/100 VAC / 50-60 Hz External power supply included | 24 VDC with 240/100 VAC / 50-60 Hz External power supply included | 24 VDC with 240/100 VAC / 50-60 Hz External power supply included |
| Power consumption | 160 W | 220 W | 160 W |
| PC minimum requirements | Windows 8 or higher*1 | Windows 8 or higher*1 | Windows 8 or higher*1 |
| Memory | 4 GB RAM*1 | 4 GB RAM*1 | 4 GB RAM*1 |
| Graphics card | OpenGL 2.0 or higher*1 | OpenGL 2.0 or higher*1 | OpenGL 2.0 or higher*1 |
| I/O Interface | 1 USB port | 1 USB port | 1 USB port |
| Connectivity | 1 active internet connection | 1 active internet connection | 1 active internet connection |

*1 Recommended minimum requirements may vary depending on the complexity of the file to be printed.



| | XFAB® 2500PD | XFAB® 3500PD |
|------------------------------------|--|--|
| Printing method | Laser – Stereolithography | Laser – Stereolithography |
| Working area | Ø 180 mm x 180 mm | 160 mm x 160 mm x 180 mm with rounded corners |
| Laser source | Solid State BlueEdge® | Solid State BlueEdge® |
| Layer thickness | 10-100 microns (depending on the type of material used) | 10-100 microns (depending on the type of material used) |
| Scanning method | Galvanometer | Galvanometer |
| Software | FICTOR® XFAB® Edition and NAUTA®+ included | FICTOR® XFAB® Edition and NAUTA®+ included |
| Input file formats | .stl, .slc, .nauta, .fictor, .mkr, .3dm, .3ds, .ply, .obj, .lwo, .x | .stl, .slc, .nauta, .fictor, .mkr, .3dm, .3ds, .ply, .obj, .lwo, .x |
| Machine size | 400 mm x 606 mm x 642 mm | 400 mm x 606 mm x 880 mm |
| Weight | 31 kg | 42 kg |
| Operating temperature and humidity | 20°-25°C / 60% | 20°-25°C / 60% |
| Power supply | 24 VDC with 240/100 VAC / 50-60 Hz External power supply included | 24 VDC with 240/100 VAC / 50-60 Hz external power supply included |
| Power consumption | 160 W | 160 W |
| PC minimum requirements | Windows 8 or higher* | Windows 8 or higher* ¹ |
| Memory | 4 GB RAM* | 4 GB RAM* ¹ |
| Graphics card | OpenGL 2.0 or higher* ¹ | OpenGL 2.0 or higher* ¹ |
| I/O Interface | 1 USB port | 1 USB port, 1 Ethernet TCP/IP port |
| Connectivity | 1 active internet connection | 1 active internet connection |

* Recommended minimum requirements may vary depending on the complexity of the file to be printed.
¹ integrated PC. The minimum requirements are intended for the use of NAUTA®+ on an external PC (not included).
Technical specifications subject to change without notice.

TECHNICAL SHEETS

| Material | Indication | Page | LFAB | DFAB | XFAB 2500PD | XFAB 3500PD |
|----------------------|---------------------------------|--------|------|------|-------------|-------------|
| Irix Max | Permanent restorations | 19 | ▲ | ▲ | — | — |
| Irix Max PHOTOSHADE | Permanent restorations | 19 | — | ▲ | — | — |
| Irix Plus | Permanent restorations | 21 | ▲ | ▲ | ▲ | ▲ |
| Irix Plus PHOTOSHADE | Permanent restorations | 21 | — | ▲ | — | — |
| Temporis | Temporary restorations | 23 | ▲ | ▲ | ▲ | ▲ |
| Temporis PHOTOSHADE | Temporary restorations | 23 | — | ▲ | — | — |
| Precisa RD096B | Digital models | 33 | — | — | — | ▲ |
| Precisa RD096GY | Digital models | 33 | ▲ | ▲ | ▲ | ▲ |
| Precisa RD096GR | Digital models | 33 | — | — | — | ▲ |
| Precisa RD096P | Digital models | 33 | — | — | — | ▲ |
| Precisa RD096W | Digital models | 33 | — | — | — | ▲ |
| Precisa RD096Y | Digital models | 33 | — | — | — | ▲ |
| Precisa RD096IV | Digital models | 33 | — | — | — | ▲ |
| Precisa RD097 | Digital models | 33 | — | — | ▲ | ▲ |
| Precisa RD-ECO2 | Digital models | 33 | — | — | — | ▲ |
| Invicta 907 | Digital models | 33 | — | — | ▲ | — |
| Invicta 915 | Digital models | 33 | — | — | ▲ | — |
| Invicta 917 | Digital models | 33 | — | — | ▲ | — |
| Therma 294 | Thermoforming models | 35 | — | — | ▲ | — |
| Therma RD095 | Thermoforming models | 35 | — | — | — | ▲ |
| DS3000 | Surgical guides | 37 | ▲ | ▲ | ▲ | ▲ |
| Vitra 430 | Medical imaging | 39 | — | — | ▲ | — |
| DS2000 | Medical imaging | 39 | — | — | — | ▲ |
| Fusia RF080 | Castable resin, pressed ceramic | 41, 43 | — | — | — | ▲ |
| Fusia DC710 | Castable resin, pressed ceramic | 41, 43 | — | — | ▲ | — |
| DS3500 | Trays | 44 | — | — | ▲ | ▲ |
| GL4000 | Gingiva-like, soft tissue | 45 | — | — | ▲ | ▲ |

Technical specifications subject to change without notice.





DWS

Via della Meccanica, 21
36016 Thiene (VI) – Italy
T +39 0445 810810
info@dwssystems.com

www.dwssystems.com

MADE IN ITALY



Company certified according to ISO 9001:2015 and ISO 13485:2016, which attest to compliance with the highest standards in medical devices.

Information

This document is reserved for healthcare professionals as it contains information on medical devices that may create situations of danger to the health and safety of the patient if not correctly read, understood and applied by a professional. Technical specifications subject to change without notice.



www.dwssystems.com