

Where Innovation Meets Excellence

B&L BIOTECH

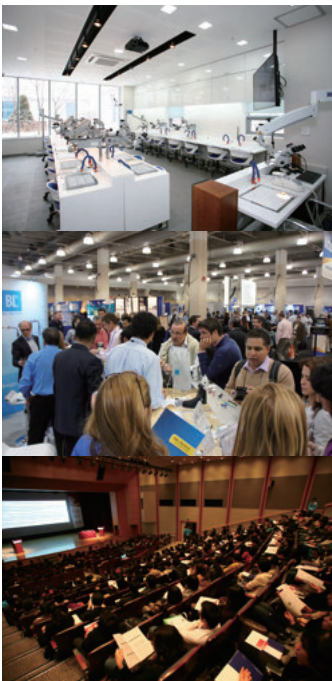
**PRODUCT
CATALOG**



B&L BIOTECH



WHERE INNOVATION MEETS EXCELLENCE



B&L Biotech was established by several dentists. These dentists, who specialized in endodontics, shared a common goal of developing products with innovation and excellence.

With this view, B&L Biotech had actively invested in the R&D field, so introduced the first cordless heat source system and gutta percha delivery system, known respectively as the B&L Alpha 2 and the B&L Beta.

And B&L Biotech introduced other products such as micro-projection ultrasonic tips and surgical instruments after years of technology development.

B&L Biotech is one of the fastest rising companies in the global dental market and currently services over 40 countries.

B&L Biotech opened its US branch near Philadelphia in 2010 and relocated it to Northern Virginia in 2014.

Now, B&L Biotech continues to strive to develop more innovative products and to expand and diversify its products line.

Table of Contents

Cordless Obturation Devices

· SuperEndo - α^2	2
· Baek's Plugger	3
· SuperEndo - β / β -Mini	4
· BL-S Kondenser / BL-B Kondenser	6

Ultrasonic Tips

· BL-TIP	7
· CK TIP	8
· VIBRAPOST	8
· IS TIP	9
· JETIP	10

Microsurgical Instruments

· JETIP Instrument	11
· JetXchange Instrument	13
· Micro Mirror	15
· JETIP Instrument Suture set	15

Retractor

· LeeTrac	16
· KimTrac	17

Endodontic Accessories

· B&L GP Gauge & Cutter	18
· Endo B / Endo M / Endo R / Endo M&R	18

Cordless Curing Light

· B&Lite S	19
------------------	----

Cordless Heat Source for Optimal Warm Vertical Condensation

SuperEndo- α^2 ®



Cordless and Ergonomic

- Provides easy access from various directions
- Reduces fatigue on hand and wrist
- Hexagonal shape on the connecting joint to prevent rotation of the plugger

Fast Temperature Rising & Accurate Heating

- Reaches the set temperature in a short time after activating the button
- Works at accurate set temperature

Hours of use

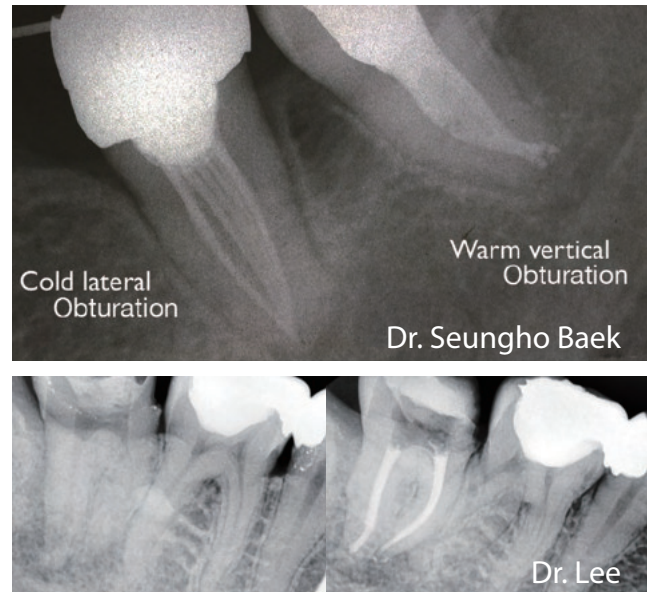
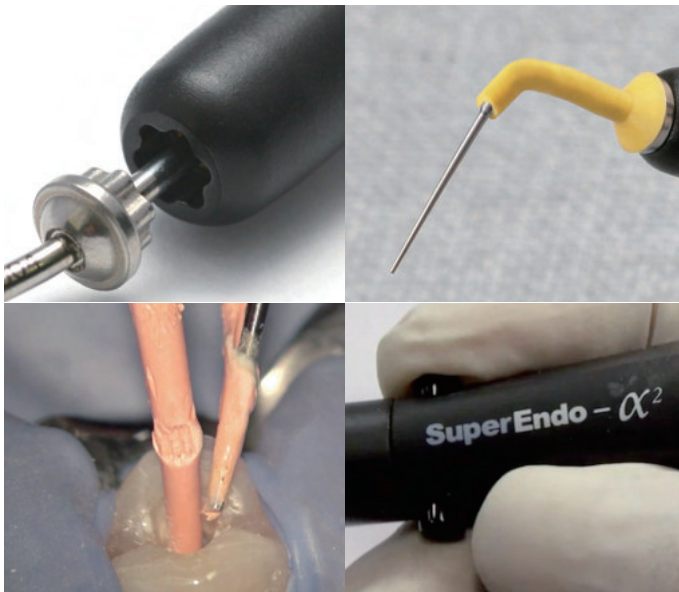
- Able to use more than 1 hour continuously on single charge
- Able to use more than 1 week in intermittent use

Components

- Alpha Units : main device(BAMB-Black, BAMW-White)
charging console(BACCB-Black, BACCW-White)
- Alpha Accessories : battery(BAB), power cord(BPC), AC adapter(BAA),
AC adapter antistatic cap(BAACB-Black, BAACW-White),
plugger protector sleeve(BPPS, 10EA)

Starter Kit

- SuperEndo- α^2 with 3 pluggers (#55/.06, #55/.08, #55/.10)
- Item code: ASKB(Black), ASKW(White)



Baek's Plugger

- Total 13 items: 10 types of pluggers, 2 types of spreaders, and a hot testing tip
- Wide varieties to choose according to root canal size
- Hot testing tip: used for heat test to determine the vitality of the pulp



Cordless Gutta Percha Heating and Delivery System for Optimal Backfill

Beta Mini[®]

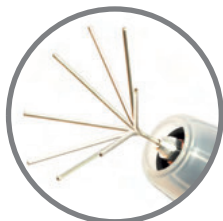
Smaller size, Greater convenience

SuperEndo-β[®]



Cordless and Ergonomic

- Accessible from various directions
- Reduces fatigue on hand and wrist
- 360-degree swivel needle for easy access



Safety Feature

- Includes thermal protector to prevent accidental burns from a hot needle

Fast Temperature Rising & Accurate heating

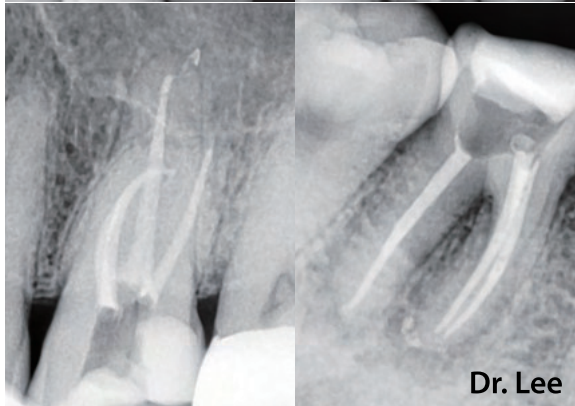
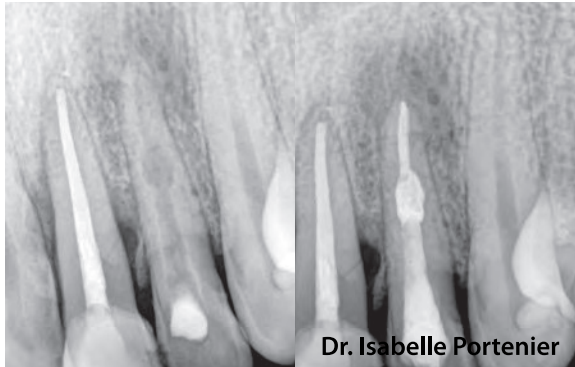
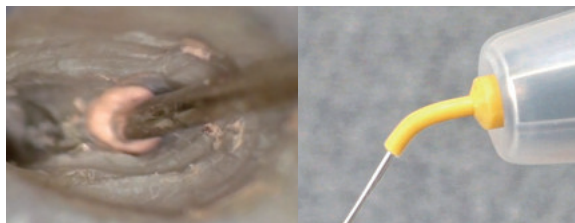
- Reaches the set temperature in a short time after activating the button
- Backfills with heated Gutta Percha at the accurate set temperature

Components

- Beta Units : main device(BBMB-Black, BMW-White)
charging console(BBCCB-Black, BBCCW-White)
thermal protector(BTP, 3EA), plunger(BPAN), silicone cover(BSC)
- Beta Mini Units : main device(EBMB-Black, EBMW-White)
charging console(EBCCB-Black, EBCCW-White)
thermal protector(ETP, 3EA), plunger(EPA), silicone cover(ESC)
- Compatible Accessories : battery(BBB), power cord(BPC), AC adapter(BAA),
AC adapter antistatic cap(BAACB-Black, BAACW-White),
cleaning brush(BCB, 2EA), needle bender/wrench(BMT),
needle protector sleeve(BNPS, 10EA)

Starter Kit

- SuperEndo-β or Beta Mini with needle pack(20G/24mm 2EA, 23G/24mm 4EA, 25G/24mm 2EA) and 1 pack of GP pellet(100EA)
- Item code: BSKB(β-black), BSKW(β-white), ESKB(Mini-black), ESKW(Mini-white)



Accessories for SuperEndo-β, Beta Mini

Needle



Needles for SuperEndo-β, Beta Mini

Gauge	Length	Item Code
20 G	22 mm	BSN2220
20 G	24 mm	BSN2420
20 G	28 mm	BSN2820
20 G	50 mm	BSN5020 (VET)
23 G	21 mm	BSN2123
23 G	24 mm	BSN2423
23 G	28 mm	BSN2823
25 G	22 mm	BSN2225
25 G	24 mm	BSN2425
25 G	26 mm	BSN2625

Multibending Needles for SuperEndo-β, Beta Mini

Gauge	Length	Diameter	Item Code
20 G	24 mm	0.85 mm	BMN2420
23 G	24 mm	0.64 mm	BMN2423
25 G	24 mm	0.54 mm	BMN2425



Needle Bender/Wrench (BMT)

*** CAUTION !** It is recommended to use a dedicated bender and bend at least 5mm away from the connecting site.

Accessories for SuperEndo-β / Beta Mini

Gutta Percha Pellet



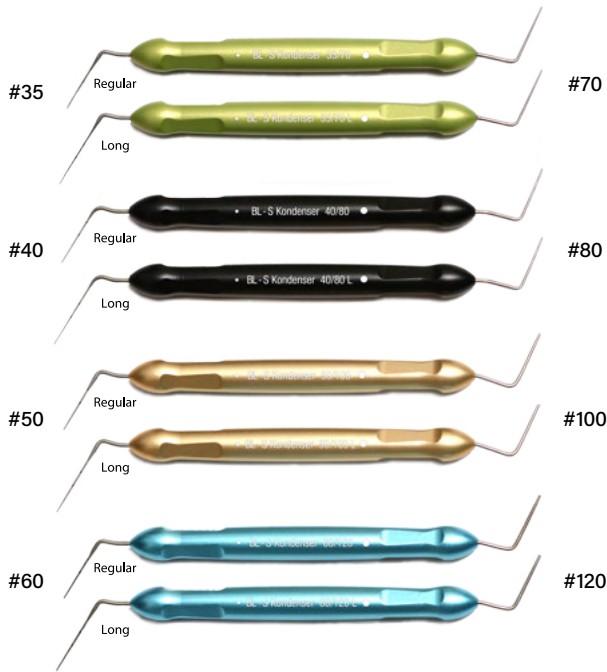
(100EA/PKG)

Gutta Percha Pellets for SuperEndo-β, Beta Mini

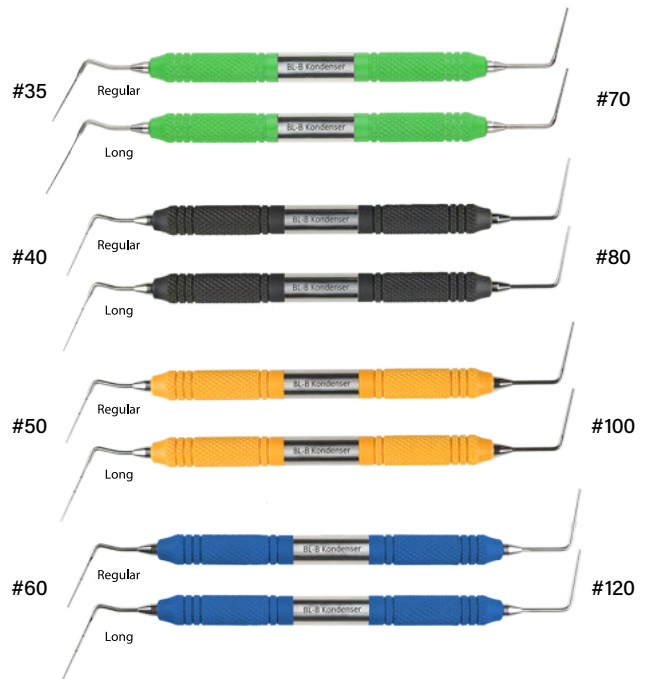
Type	Item Code
Soft	BGPSOFT
Regular	BGPREG
Hard	BGPHARD

Condensation of Obturation Material

BL-S Kondensers



BL-B Kondensers

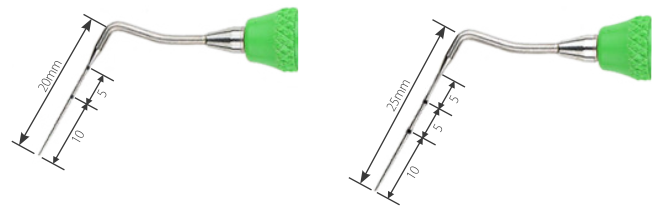


Common Features

- Consists of flexible end of nickel titanium and rigid end of stainless steel
- 35/70, 40/80, 50/100, and 60/120 individually or in a full set of 4
- Color-coded handles by size, allowing faster selection of the desired condenser
- Two types of length : regular and long (with longer NiTi side)
 - The stainless steel sides are all the same length in both regular and long types.

BL-B Kondenser

- Condenser with JetXchange Handle
- Two half- parts containing tips are connected by a bridge.
- If the tip is broken or damaged, only a half-part can be replaced, making it efficient and economical.



Regular Type - NiTi

Long Type - NiTi



Color of Handle	Item Code						
	BL - S Kondenser		BL-B Kondenser				
	Regular	Long	Regular	Long	Components		
					NiTi Half (R)	NiTi Half (L)	SS Half
Green	BCON35	BCON35L	BKX35	BKX35L	BKX35T	BKX35LT	BKX70T
Black	BCON40	BCON40L	BKX40	BKX40L	BKX40T	BKX40LT	BKX80T
Gold (yellow)	BCON50	BCON50L	BKX50	BKX50L	BKX50T	BKX50LT	BKX100T
Blue	BCON60	BCON60L	BKX60	BKX60L	BKX60T	BKX60LT	BKX120T
-	BCONSET	BCONSETL	BKXSET	BKXSETL	BL-B-Kondenser Bridge : JXBRK		

Ultrasonic Tip for Endodontic Access

BL-TIP®

Purpose

- Used to remove pulp stones or calcified dentin to access the root canal

Improved Durability

- Made of all-in-one with abrasive micro-projections
- Not reduce in cutting efficiency caused by the wear of the diamond coating

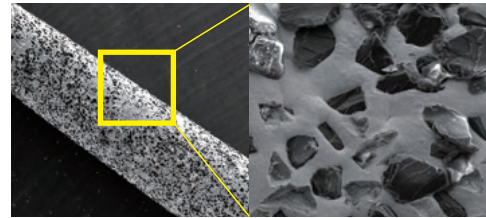
Versatility

- 3 tips with different thicknesses and lengths to select

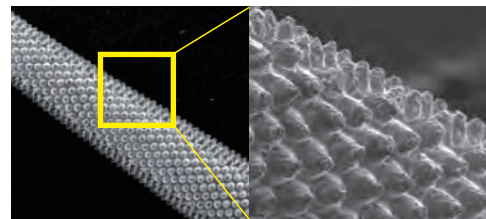
Efficiency

- Works simultaneously from the end and sides of the tip, which enables to remove efficiently

Comparison of SEM images



Conventional diamond coated tip



Fine processing BL-tip with micro-projections

Product	Features of Tip	Magnified Image (x50)	Characteristics
BL-1	<p>0,5mm 16mm (projection size : 100µm)</p>		<ul style="list-style-type: none"> · Pointed shape · Useful for finding the root canal orifice such as MB2 canal
BL-3	<p>0,5mm 16mm (projection size : 100µm)</p>		<ul style="list-style-type: none"> · More blunt than BL-1 · Useful for gaining straight access to the orifice by gross removing canal obstructions effectively
BL-5	<p>0,3mm 21mm (projection size : 50µm)</p>		<ul style="list-style-type: none"> · Thinner and longer than BL-1 & BL-3 · Applicable inside the root canal · Useful for creating the space to insert a file

Type of Scaler	Product	Recommended Power Level
SATELEC®	BL-1-A, BL-3-A	Under 30% of the maximum
	BL-5-A	Under 20% of the maximum
EMS®	BL-1-E, BL-3-E	Under 20% of the maximum
	BL-5-E	Under 10% of the maximum

Item Code for Starter Kit

- BLSKA(Satelec): BL1A, BL3A, and BL5A
- BLSKE(EMS): BL1E, BL3E, and BL5E

※ CAUTION! The tip may break if used at a higher power than recommended power level.

Ultrasonic Tip for Troughing & Irrigation

CKTIP



CK Tip
(CK1E, CK2E, CK1A, CK2A)



CK File
(CKF20, 10EA)



CK Needle
(CKN, 10EA)

Type of Scaler	Product	Angle
SATELEC®	CK1A	120°
	CK2A	90°
EMS®	CK1E	120°
	CK2E	90°

CK File for Irrigation

- Used by combining #20 CK file to CK tip
- Improves the irrigation effect by generating acoustic streaming
- Performs in the root canal filled with irrigation solution, without touching the canal walls (PUI, Passive Ultrasonic Irrigation)
- Recommended power level: under 10% of the maximum



CK Needle for Troughing

- Used by combining CK needle to CK tip
- Creates the fine space near the post and separated file by removing the surrounding dentin
- Easy to remove the post when using CK needle followed by Vibrapost



Ultrasonic Tip for Post Removal

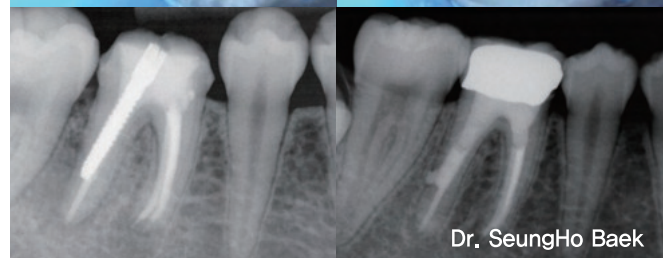
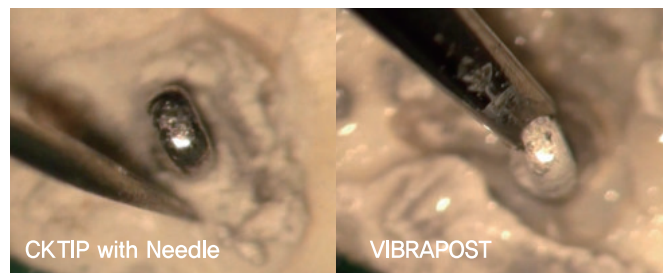
VIBRAPOST



- Used for removing posts from a root canal
- Acts with the V-shaped notch engaging the post
- Removes posts efficiently by constant delivery of ultrasonic energy without any loss

Type of Scaler	Product	Recommended Power Level
SATELEC®	VPA	Under 80% of the maximum
EMS®	VPE	

※CAUTION! In order to avoid potential damage to the PDL from excessive heat, it is recommended to use it with water and refrain from performing for more than 15 seconds at a time.



Dr. SeungHo Baek

Implant Scaler Tip

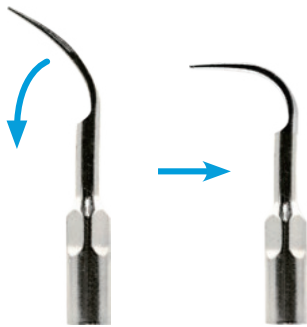
ISTIP®



Metallic Implant Scaler Tip

- Provides more efficient scaling than other plastic or titanium scaler for the implant
- Removes dental plaque, calculus, and excess cement around the implant with minimal scratches
- Used for preventing and treating peri-implantitis
- Ideal for the maintenance care of dental implant

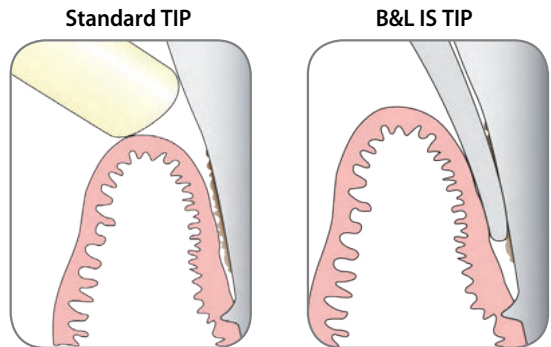
Type of Scaler	Product
SATELEC®	STS5A / STS5A3(set of 3) / STS5A5(set of 5)
EMS®	STS5E / STS5E3(set of 3) / STS5E5(set of 5)



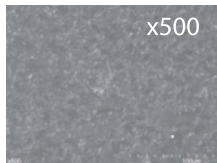
- Made from soft metal, bendable into any shape as desired



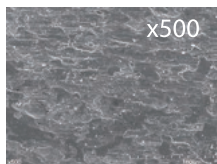
- Easy access to hard-to-reach distal surface



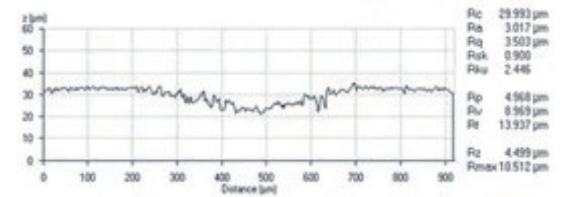
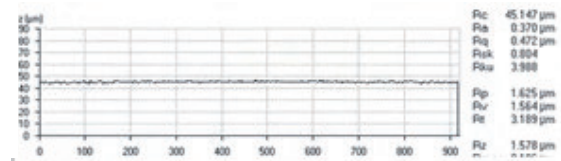
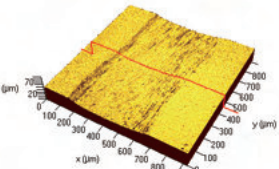
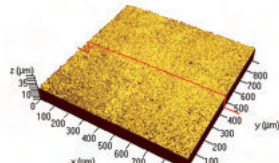
- Thin tip end for easy access to the gingival sulcus



B&L IS Tip

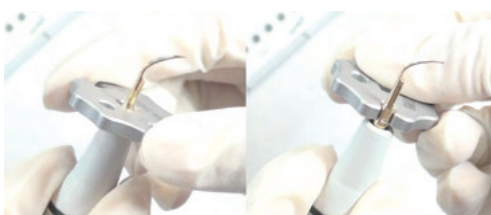


Conventional SS tip



- SEM & Confocal laser microscopic images comparing the roughness of Ti disc surface after applying conventional SS tip and IS tip (Chun KA et al, BMC Oral Health 2017)

Ultrasonic Tip Accessories



Wrench (WR01)



Tip Valet (TVALET)

Ultrasonic Tip for Microsurgery

JETIP®

Purpose

- Used for root-end preparation during apical microsurgery

Improved Durability

- Made of all-in-one with abrasive micro-projections
- Not reduce in cutting efficiency caused by the wear of the diamond coating

Efficiency

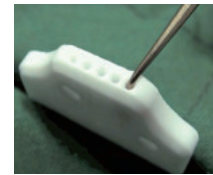
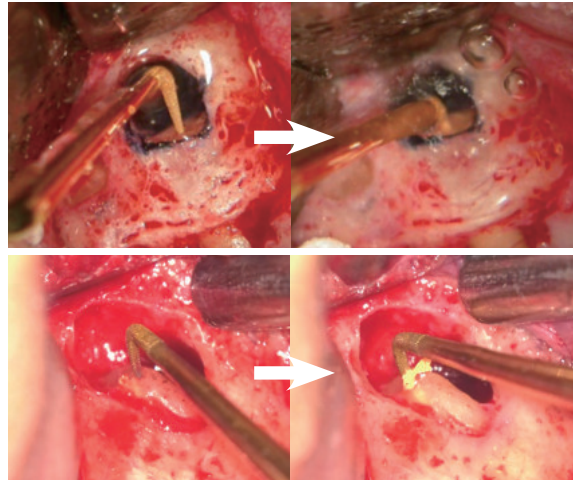
- Removes GP efficiently without unnecessary removal of dentin

Bending Jig

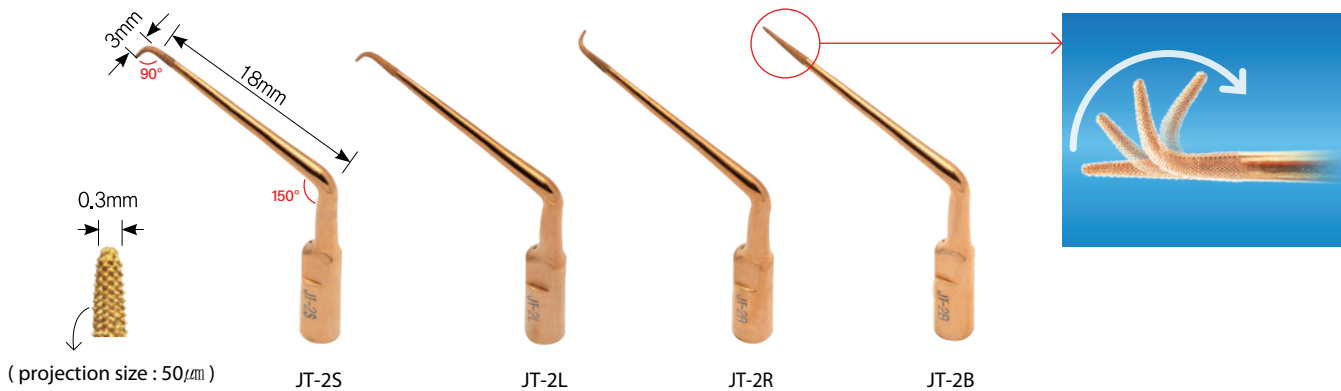
- Includes 5 holes of 3,4,5,6,7mm in depth
- Used to bend JT2B tip to the desired depth and direction
- Can be used 2 to 4 times per hole
- Does not damage the micro-projections of the tip during bending

Item Code for Full Set

- JT2FA(Satelec): JT2SA, JT2LA, JT2RA, JT2BA(2EA), and JTBJ
- JT2FE(EMS): JT2SE, JT2LE, JT2RE, JT2BE(2EA), and JTBJ



Bending Jig (JTBJ)



Product	Features of Tip	Areas of Use
JT-2S	Bent downward at the working end	Incisors, canine and premolars
JT-2L	Bent to the left at the working end	Upper right & lower left premolars and molars
JT-2R	Ben to the right at the working end	Upper left & lower right premolars and molars
JT-2B	Bendable	-

Type of Scaler	Product	Recommended Power Level
SATELEC®	JT-2S-A, JT-2L-A, JT-2R-A, JT-2B-A	Under 20% of the maximum
EMS®	JT-2S-E, JT-2L-E, JT-2R-E, JT-2B-E	Under 10% of the maximum

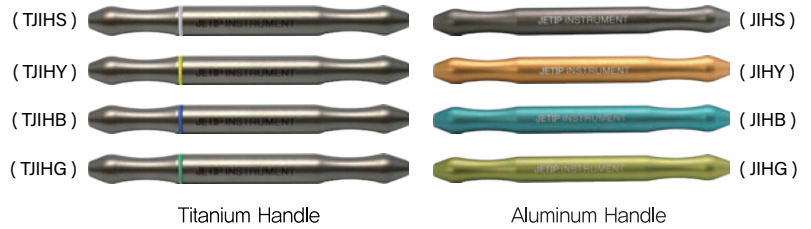
※ CAUTION! The tip may break if used at a higher power than recommended power level.

Microsurgical Instruments

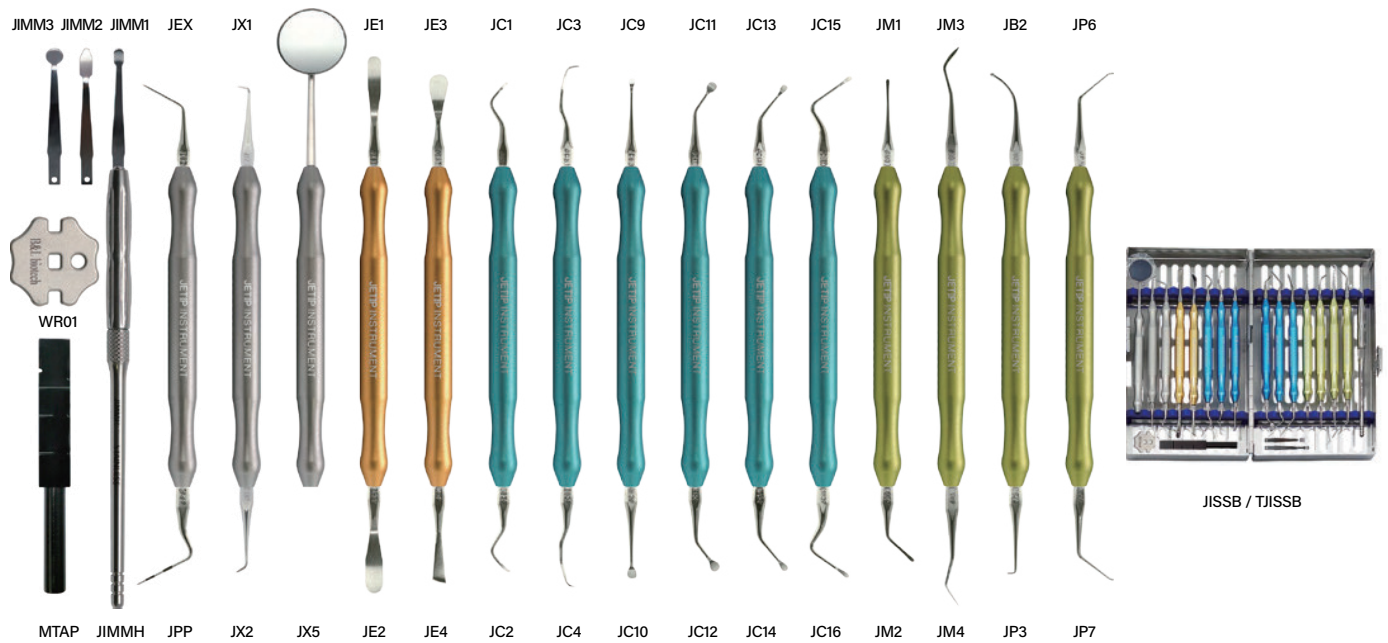
JETIP Instrument

JETIP Microsurgical Instrument

- Selectable between aluminum and titanium handle
- Color coded by procedural steps
- Easy to organize and recognize instruments according to colors

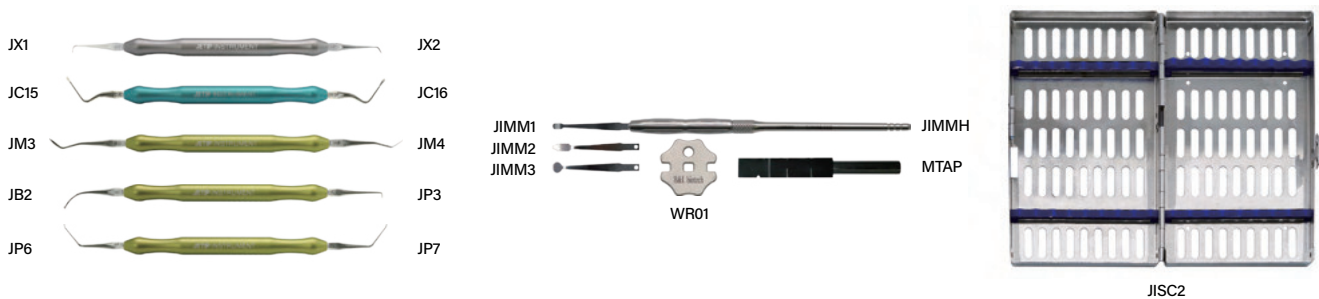


Basic Set : JISSB(aluminum handle) / TJISSB(titanium handle)



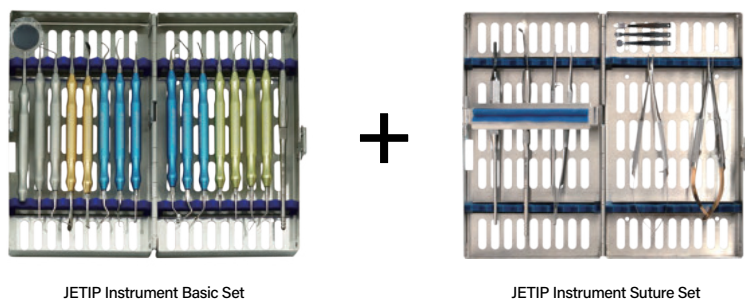
Essential Set : JISSE(aluminum handle) / TJISSE(titanium handle)

Composed of frequently used instruments among to the basic set

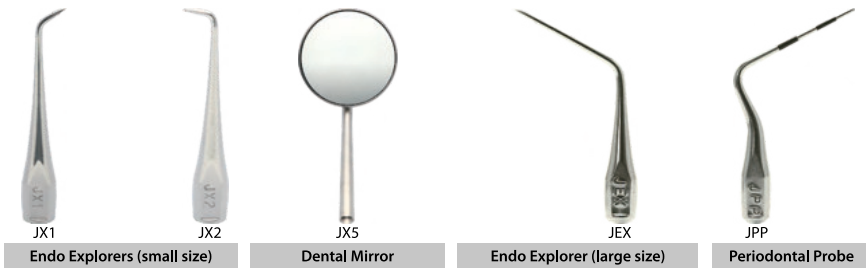


Deluxe Set : JISSD (aluminum handle) / TJISSD (titanium handle)

Consists of the basic set and JETIP instrument suture set



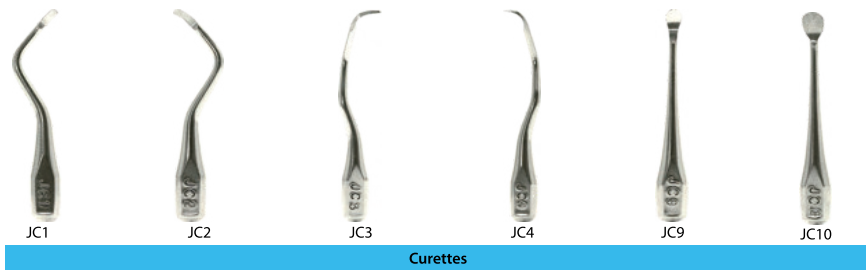
Tip of JETIP Instrument



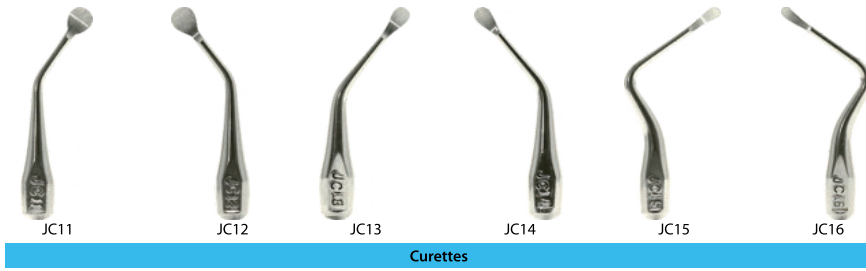
Silver
(for examination and diagnosis)



Gold
(for flap elevation)



Blue
(for curettage)



Green
(for retrograde filling)

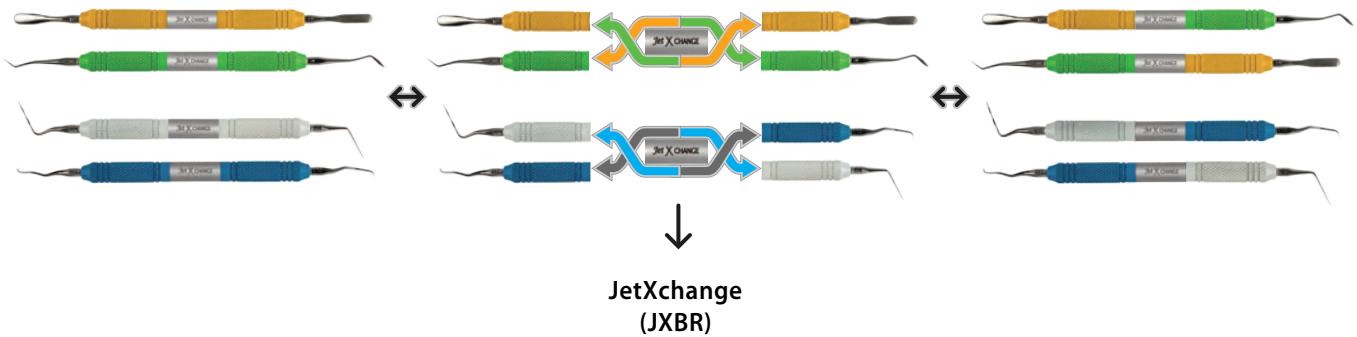


Microsurgical Instruments

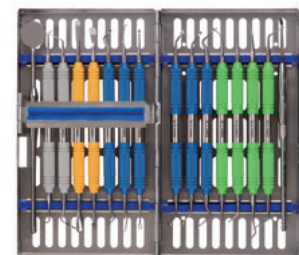
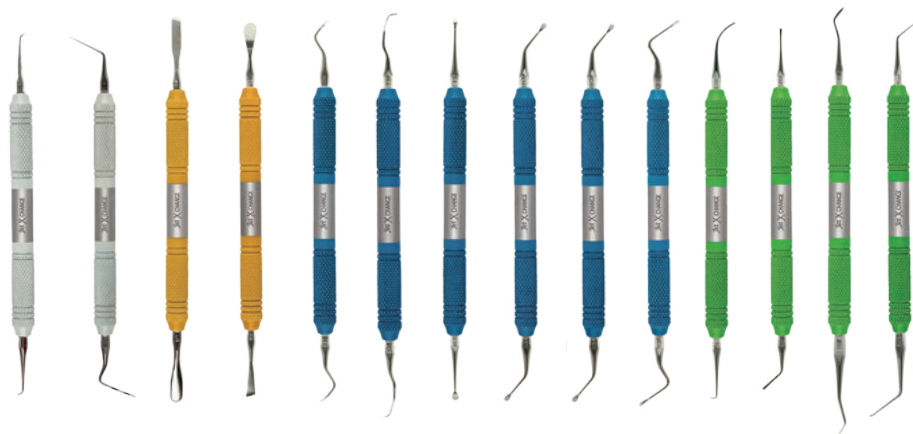
JetXchange® Instrument

JetXchange Instrument

- Constructed in which two parts containing tips being connected by JetXchange
- Color coded by procedural steps
- Easy to organize and recognize instruments according to colors of handles
- Able to customize the instrument containing tips desired
- If the tip is broken or damaged, only a half-part can be replaced, making it efficient and economical.































JetXchange Instrument Basic Set



JXSSB

Tip of JetXchange Instrument

			(Set)	
JXHCR			JXHCL	(JXHCRHCL)
JXEED			JXPPB	(JXEEDPPB)
JXPE1			JXPE2	(JXPE1PE2)
JXPE3			JXPE4	(JXPE3PE4)
JXMG1			JXMG2	(JXMG1MG2)
JXLG1			JXLG2	(JXLG1LG2)
JXSC1			JXSC2	(JXSC1SC2)
JXMCL			JXMCR	(JXMCLMCR)
JXCSL			JXCSR	(JXCSLXCSR)
JXSCL			JXSCR	(JXSCLSCR)
JXBB2			JXCDR	(JXBB2CDR)
JXMI1			JXMI2	(JXMI1MI2)
JXMC1			JXMC2	(JXMC1MC2)
JXOCR1			JXOCL1	(JXOCR1CL1)

Silver
(for examination and diagnosis)

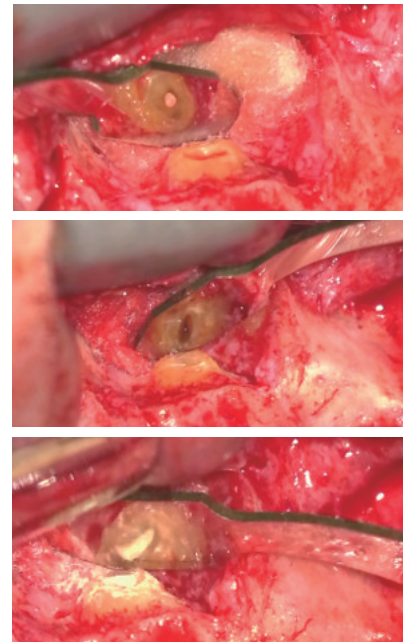
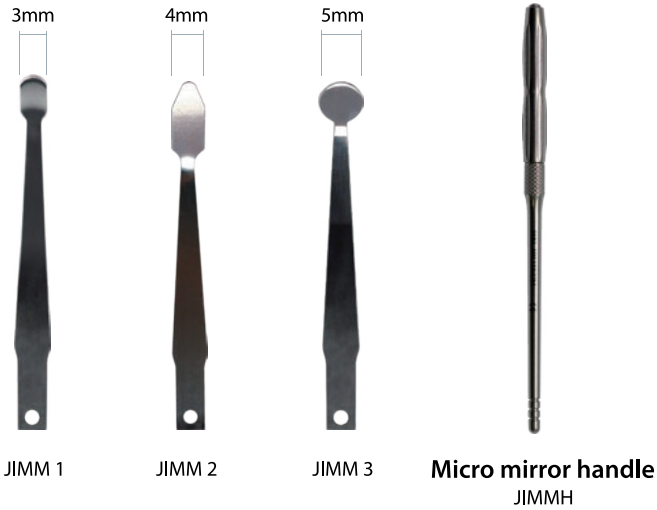
Gold
(for flap elevation)

Blue
(for curettage)

Green
(for retrograde filling)

Microsurgical Instruments

Micro Mirror



Microsurgical Instruments

JETIP Instrument Suture Set

Suture Set for Microsurgery

- Composed of surgical instruments used for apical microsurgery
- Includes Castroviejo-typed instruments for the microsurgery
- Easy to store and sterilize with a dedicated cassette
- Available in addition to conventional surgical sets



Castroviejo needle holder
(JICV)



Castroviejo scissors
(JIMS)



Castroviejo tissue forcep
(JITF)



Blade Handle
(JIBH)



Micro mirror handle
(JIMMH)



JISSS

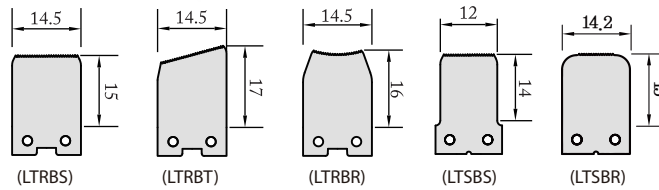
Reflective Retractor for Surgery

LeeTrac®

Wide type



Wide handle (LRTNH)

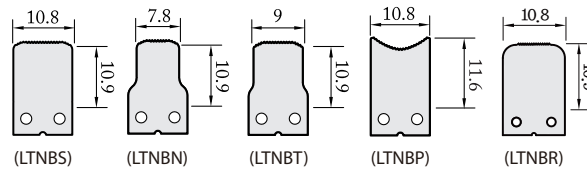


Exchangeable blade

Narrow type



Narrow handle (LRNNH)



Exchangeable blade

Blade with Reflective Surface

- Able to view the surgical area through the blade with reflective surface

Exchangeable Blade with Serrated Edge

- Various blades can be selectively used by the contour of the cortical plate of the surgical site.
- The end of blade is serrated to prevent slipping from the cortical plate.

Ergonomic Handle

- Designed to reduce fatigue after holding the handle for a long period of time.

LeeTrac Wing

- Provides wider visibility and easier accessibility of the surgical site by additional flap elevation
- Made from soft material to minimize mucosal tears

LeeTrac Set

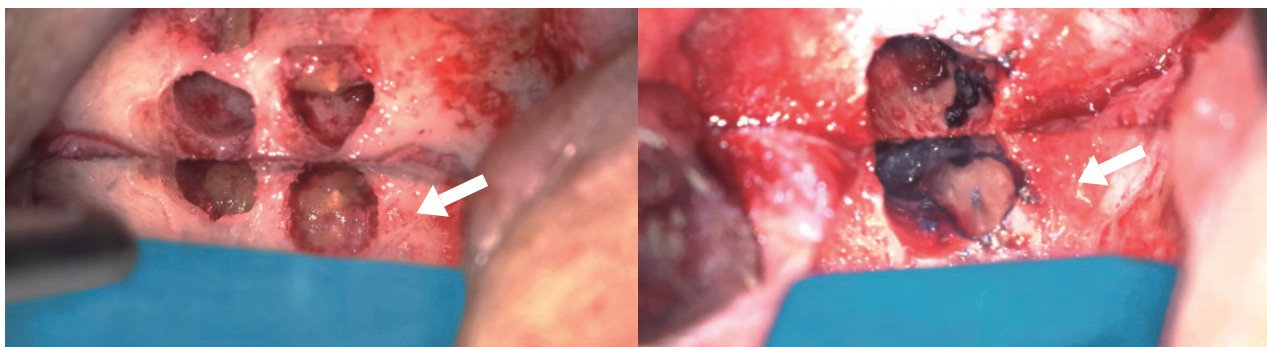
- LTRNS(wide): handle(LRTNH), blade(LTRBS, LTRBT), autoclaving cap(LTRSS), wing(LTRWT)
- LTNNS(narrow): handle(LRNNH), blade(LTNBS, LTNBN), autoclaving cap(LTNSS), wing(LTNWT)



Autoclaving cap (LTRSS/LTNSS)



LeeTrac wing (LTRWT/LTNWT)



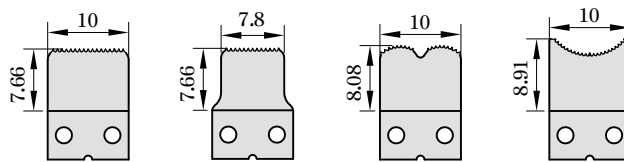
* The image of the root end after apicoectomy is visible on the surface of the LeeTrac's blade. (acts as a micromirror)

Bendable Retractor for Surgery

KimTrac®



Handle (KTNNH)



Blade

Ni-Ti type	KTN1N	KTN2N	KTN3N	KTN4N
SUS type	KTN1S	KTN2S	KTN3S	KTN4S

Blades Made of Two Materials

- Capable of choosing between SUS type and NiTi type
- After bending the Niti blades, it returns to its original shape after it has been autoclaved.

Exchangeable Blade with Serrated Edge

- Various blades can be selectively used by the contour of the cortical plate of the surgical site.
- End of blade is serrated to prevent slipping from the cortical plate.

Ergonomic Handle

- Designed to reduce fatigue after holding the handle for a long period of time.

Kimtrac Wing

- Provides wider visibility and easier accessibility of the surgical site by additional flap elevation
- Made from soft material to minimize mucosal tears

Kimtrac Bending Jig

- Used for bending of NiTi type blades to desired angle

Kimtrac Set

- KTNNS(NiTi): handle(KTNNH), blade(KTN1N), autoclaving cap(LTNSS), wing(LTNWT), bending jig(KBJ)
- KTNSS(SUS): handle(KTNNH), blade(KTN1S), autoclaving cap(LTNSS), wing(LTNWT), bending jig(KBJ)



Autoclaving cap (LTNSS)



Kimtrac wing (LTNWT)



Kimtrac bending jig (KBJ)



Endodontic Accessories

B&L GP Gauge & Cutter™



* Autoclavable

2-in-1 System with Gauging and Cutting of GP cone

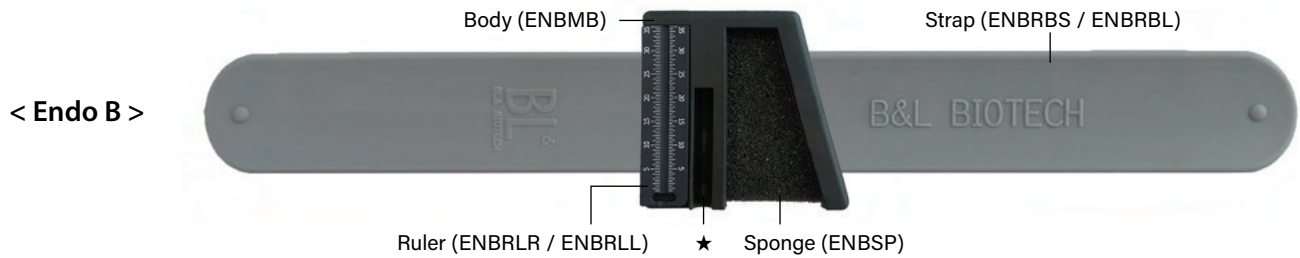
- Able to measure the diameter of the GP cone and cut it to the ISO - specified size as desired

Accurate Gauging and Clean Cutting

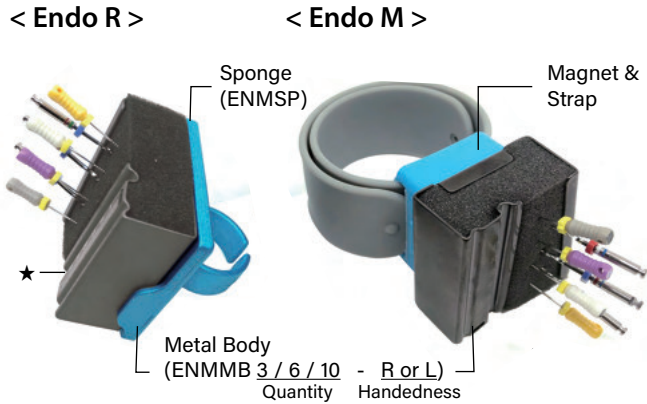
- Corrects inaccurate size of commercial GP cones that allow errors
- Cuts GP cones cleanly and without irregularities
- Contributes to apical sealing using the master cone of accurate diameter

Endodontic Accessories

Endo B™ / Endo M™ / Endo R™ / Endo M&R™



< Endo B >



< Endo M >

Endodontic Ruler & File Organizer

- Able to organize and hold files during endodontic treatment
- Provides the ruler to measure the length
- Includes a groove for lubricants (★)
- Endo B: silicone body including attachable ruler + strap
- Endo M: DLC coated metal body + magnet & strap
- Endo R :DLC coated metal body + magnetic ring
- Endo M&R: DLC coated metal body + magnet & strap + magnetic ring

Endo B (Files are not included)

Ruler \ Strap	Short(24cm)	Long(28cm)
Right - handed	ENBSSR	ENBSLR
Left - handed	ENBSSL	ENBSLL

Endo M

Magnet \ Strap	Short(24cm)	Long(28cm)
Gray	ENMSSG-R/L	ENMSLG-R/L
Blue	ENMSSB-R/L	ENMSLB-R/L

Endo R

Color \ Size	Small (Int. Diameter : 16.5mm)	Medium (Int. Diameter : 18mm)	Large (Int. Diameter : 21 mm)
Gray	ENMRSG-R/L	ENMRMG-R/L	ENMRLG-R/L
Blue	ENMRSB-R/L	ENMRMB-R/L	ENMRLB-R/L

Endo M&R ex) EMNSSGRSG-R: ENM SSG RS - R
EndoM EndoR Right-handed

Cordless Curing Light

B&Lite S[®]



High and Constant Light Output

- Constant light output regardless of battery power is maintained.

Replaceable and Rotatable Probe

- The light probe can rotate 360 degrees.
- Only the light probe can be replaced when the LED lifecycle is over.

Lithium Ion Battery

- Removable lithium ion batteries are used.

Item Code for B&Lite S and Accessories

- B&Lite S kit: CL-SBL
- Accessories: light probe(CL-SLP), light probe thermal guard(CL-SLG), battery pack(CL-GBP), charging stand(CL-GCS), charging stand base(CL-GCG), AC adapter(CL-GPA), light shield(CL-GAS)

Accessibility

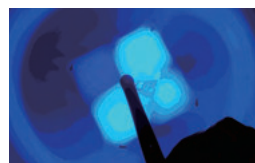
- Small head size allows easy access to the mouth and delivers the light at the proper position and angle.



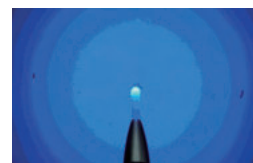
Uniformity and Concentration of Light



B&Lite^S



A company



B company



C company

Mode Description

Mode	Display	Characteristics	Output (mW/cm ²)	Time (sec)
General Composite Filling Mode		For curing of general composite resin	800	5 / 10 / 15 / 20
Fast Mode		For curing of pediatric composite resin	1200	3 / 6 / 9 / 12
Soft Start Mode		Gradual increase of output from 0 to 1200 (reaching to 1200 within 3 secs)	0 ~ 1200	3 / 6 / 9 / 12
Ortho Mode - 1		For bonding orthodontic brackets	1800	2 / 4 / 6
Ortho Mode - 2		For bonding orthodontic brackets	2700	1 / 2 / 3

Contact Information

Global Sales

Bruce D. Shefsky
bdshefsky@bnlbio.com

Latin America Sales

Dr. Lissette Ramirez
drlissetteramirez@bnlbio.com

Repair Center

Global B&L Biotech, Inc.
support@bnlbio.com

U S A B&L Biotech USA, Inc
customerservice@bnlbio.com



View video clips at <https://www.video.bnlbio.com/>

B&L Biotech, Inc.

#502, 95 Gwangdeokdong-ro, Danwon-gu,
Ansan-si, Gyeonggi-do, Korea 15462
E-mail: support@bnlbio.com
FAX: +82 (31)-401-4060

B&L Biotech USA, Inc.

3959 Pender Drive, #350, Fairfax, VA, 22030 USA
TEL: +1 (703) 272-7507
FAX: +1 (703) 272-7598



*PRODUCT
CATALOG*



B&L BIOTECH

Where Innovation Meets Excellence

B&L Biotech USA, Inc.

3959 Pender Drive, Suite 350, Fairfax, VA, 22030 USA
TEL: +1 (703) 272-7507
FAX: +1 (703) 272-7598
WEBSITE: www.bnlbio.com

Where Innovation Meets Excellence

B&L Biotech, Inc.

#502, 95 Gwangdeokdong-ro, Danwon-gu, Ansan-si, Gyeonggi-do, Korea 15462
E-mail: support@bnlbio.com
FAX: +82 (31) 401-4060
WEBSITE: www.bnlbio.co.kr