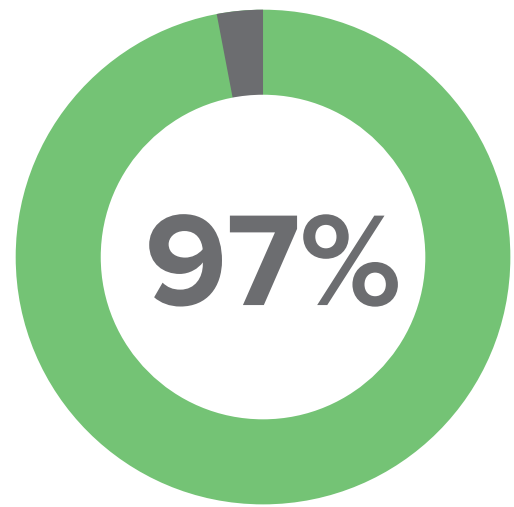




**ROOTT**

System  
overview

# Excellent 5 years clinical evidence with ROOTT implants



## Average survival rate

The post-market clinical follow-up study showed a significantly high average survival rate of 97.86% of the entire ROOTT Dental Implant System.

Report from 2021-05-24

## High quality and safety standards

Medical devices under this catalog are in compliance with established EU regulatory requirements.



## Confidence with traditional approach



Cement



Screw



Telescopic

**ROOTT** **R**



## Minimally invasive alternatives



Cement



Screw



Telescopic

**ROOTT** **C** **CS**  
**B** **BS**  
**P** **M** **S**  
**K**

# ROOTT **R**

Cement & screw retained

Two-piece implant



- Multiple and single restorations.
- Immediate & delayed placement.

\* Use CRE as a support when forming a healing abutment with composite.

## Single platform

- 10° 10° cone & internal hex
- Secure connection
- No microgap / no micromovement

## Primary stability

- V-shape design  
Efficient insertion
- RBM blasted, acid etched surface  
Optimum adhesion
- Variable threads  
Bone condensation

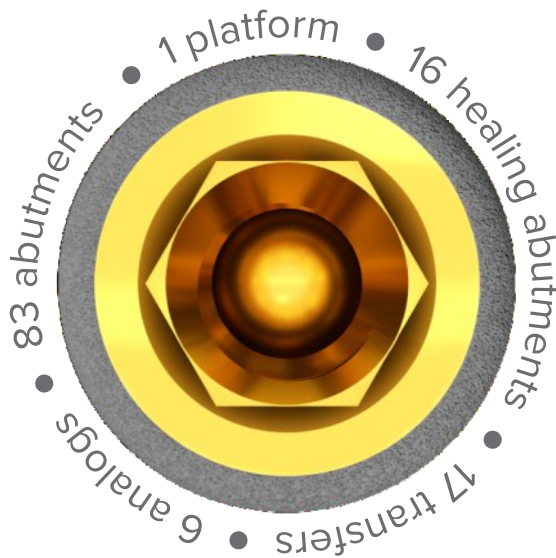
## 1 package – does it all

- Healing abutment \*
- Regular abutment
- Direct scan
- Transfer



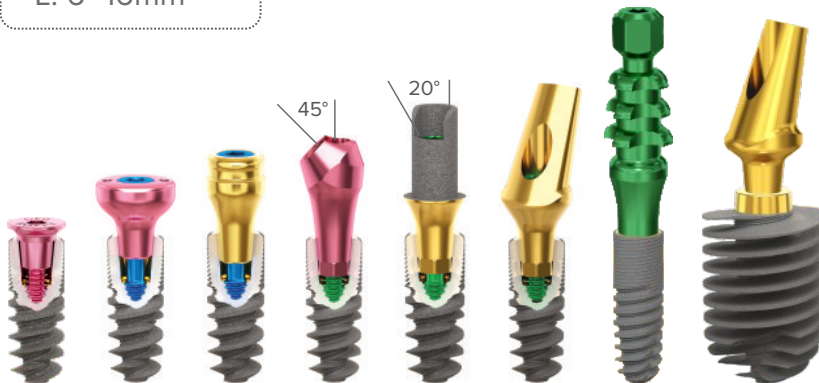
# Multiple possibilities

ROOTT R

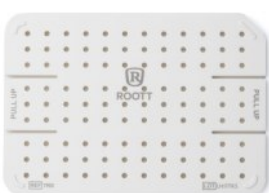


Freedom and flexibility with switching platform and morse taper connection for all prosthetic components & all implant sizes of

Ø: 3.0–5.5mm  
L: 6–16mm



# Easy management



TRS

TRS-mini

## Clinical cases



By Dr. Mohamad El Moheb



By Dr. Roman Novichenko



More cases





# ROOTT **C**

Cement & telescopic retained

One-piece implant

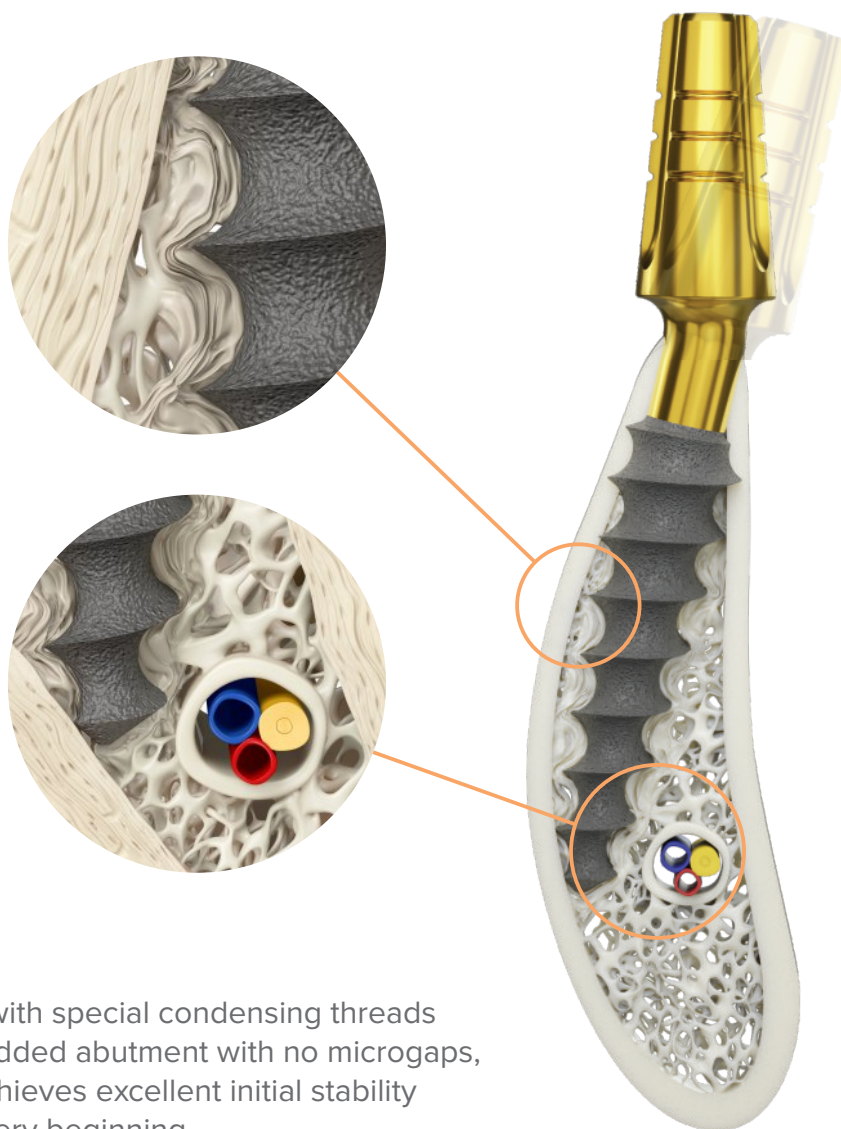
## Simple solution to bone atrophy

One-piece implant for more comfort and simplicity with a bendable neck for up to 15°. It ensures extreme time and cost-saving, which also comes with less complications and more patient acceptance.

Due to its thin design, excellent fit for narrow ridge and ensured safety due to the alveolar canal nerve bypass. Developed for single and multiple restorations.

Condensing thread

Avoiding inferior alveolar canal nerve



ROOTT C



Together with special condensing threads and embedded abutment with no microgaps, implant achieves excellent initial stability from the very beginning.

ROOTT **C**

ROOTT **CS**



Significant time & cost saving



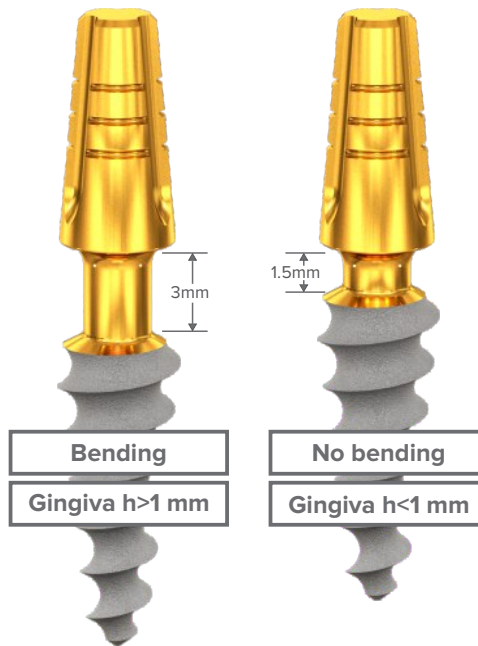
Immediate loadings



Excellent for narrow ridge



May avoid bone augmentation



## Clinical cases



By Dr. Alvaro Bastida

“FILO System is suitable in all clinical cases. Even esthetic area, narrow spaces, post-extraction and soft tissues management”

## Prosthetic variety

Cement retain with trimmable external platform, burnouts or cement-free option with patented telescopic abutments.

Telescopic

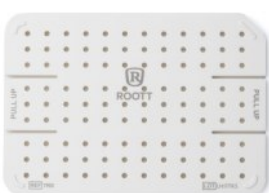


Direct scan

5mm  
4mm  
3mm



## Easy management



TRS

TRS-mini

More cases



# ROOTT **B** **BS**

Cement & telescopic retained

One-piece implant



Avoids bone grafting



Time & cost saving



Immediate loadings



Extraction sockets  
Healed bone

## Especially effective in atrophic bone with bi-cortical engagement

ROOTT B and ROOTT BS one-piece implants are designed for deficient bone in height and width. It provides efficiency in time and costs, with a bending option and a very sharp thread to enter corticalized and medullary bone. Designed to bypass the mandibular nerve, and for engagement of the cortical bone at the fusion of the pterygoid with the maxilla. Can be used with ROOTT C implants



## Bending

Abutment direction can be adjusted up to 15° relative to the implant axis, when implant neck is equal or longer than 3mm.





## Surface

ROOTT B implant surface is polished for protection from bacteria accumulation

**B** **BS**



ROOTT BS is RBM blasted and anodized. RBM surface provides:

- high BIC\*
- great osseointegration
- high success rate

\*Bone-to-implant connection

## Sizes

Ø: 3.5–10.5mm  
L: 6–26mm

Ø: 3.5–4.5mm  
L: 6–26mm

## Prosthetic variety

Cement retain with trimmable external platform, burnouts or cement-free option with patented telescopic abutments.

Telescopic

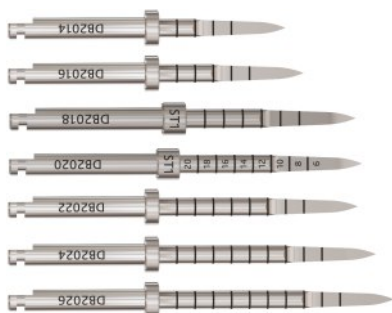


Direct scan

5mm  
4mm  
3mm



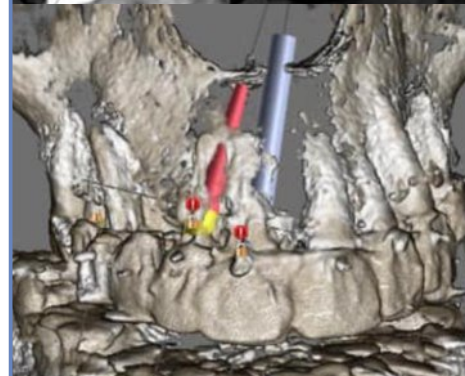
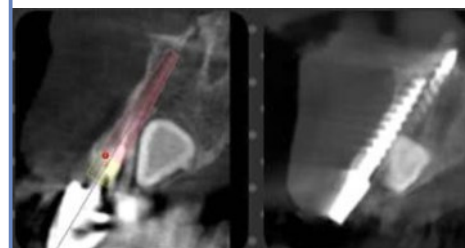
## Easy management



## Clinical cases



By Dr. Ariel Pedernera



More cases





One-piece implant

Screw retained



## Complete control & easy maintenance

Screw-retained restorations represent a secure and easy way to repair, maintain prosthesis, and treat peri-implant tissue inflammations more efficiently without damaging the suprastructure. ROOTT P, ROOTT M, ROOTT S are designed to use in combination for a cement-free full jaw restoration with 60 degrees between implant axes. Also, can be used with all ROOTT implants.

### ROOTT **P**



Long enough to tolerate the distance between pterygoid area and maxilla

Ø 2.5 prosthetic screw

Extreme condensing threads for excellent stability

L 16–26mm  
Ø 3.5–4.5mm

### ROOTT **M**



Designed for posterior jaw area

Ø 2.5 prosthetic screw

Condensing threads

L 6–20mm  
Ø 3.5–4.5mm

### ROOTT **S**



Excellent aesthetics in front jaw bone

Ø 1.8 prosthetic screw

Condensing threads

L 8–16mm  
Ø 3–3.5mm

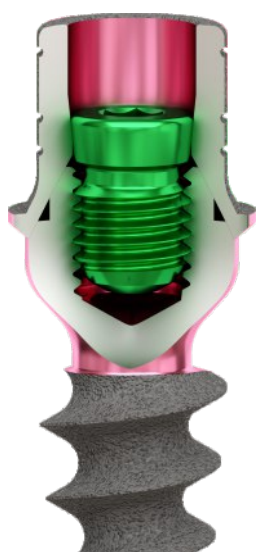
- ✓ Less invasive
- ⌚ Immediate loadings
- 🔪 Avoids sinus lift & bone grafting
- 👓 Multiple restoration



AM AMS

Direct scan

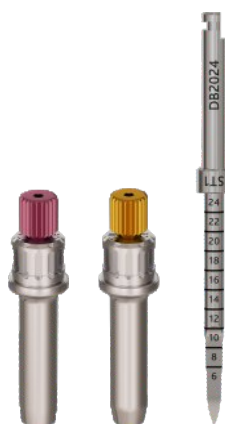
## Ultra resistant Ø2.5 mm screw



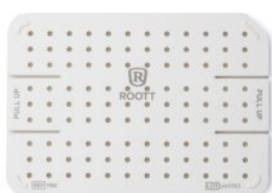
Easy handling  
Less likely losing a screw



Excellent fixation  
Withstands occlusal forces



## Easy management



TRS

TRS-mini

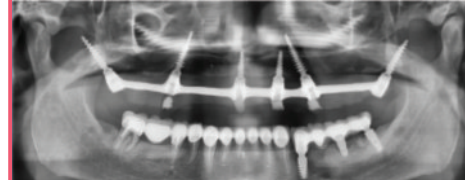
## Clinical cases



By Med. Dent. Henri Diedrich



By Dr. Daniel Saad



More cases



70+ distributors



# Products & events

roott.ch



# Clinical cases

opdeco.org

