



Dentistry Made Easier

An unmatched seamless workflow that provides industry-leading print quality for your Dental Practice and Laboratory.



Form 3B+

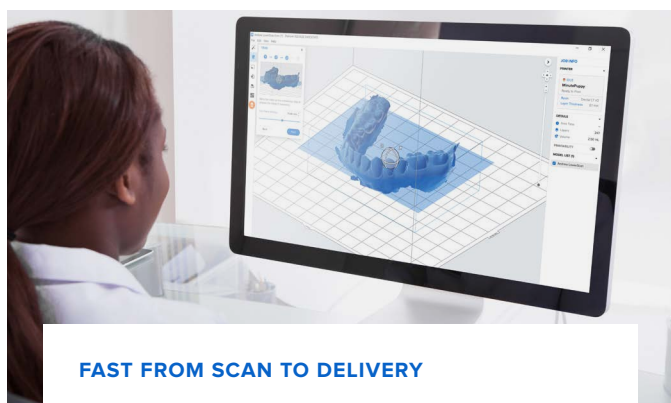
The Most Trusted Dental 3D Printer

The Form 3B+ provides dental professionals with maximum performance and versatility with an easy workflow. 3D print a wide variety of dental applications in-house with minimal interaction and unrivaled print accuracy and surface finish.



FULLY VALIDATED WORKFLOWS FOR THE PRACTICE AND THE LAB

Produce high-quality parts you'll be proud to deliver, without hassle or prohibitive costs. Validated workflows tested by dental experts across specialties and disciplines means less trial and error in your practice or lab.



FAST FROM SCAN TO DELIVERY

Print a single model in 10 minutes or produce more than 128 models in a single day. Spend less time handling your printer and more time on high-value tasks, and achieve a return on your investment in just weeks or months.



ONE PRINTER, MANY APPLICATIONS

Fabricate beautiful, high-performance models, appliances, and prosthetics on a single printer with a wide range of rigorously tested 3D printing materials. Make the most of your equipment investment with a highly versatile printer.



THE EASIEST 3D PRINTER TO LEARN AND USE

Whether you are looking to adopt digital workflows for the first time or to switch your production to Formlabs SLA 3D printers, Form 3B+ makes it simple to start and scale with mess-free material handling, intuitive software, and helpful online tutorials.

Form 3BL

Maximum Productivity, Minimum Intervention.

Produce models and other dental products day and night with the Form 3BL, an industrial large-format 3D printer developed for laboratories.



100 MICRONS

200 MICRONS



PERFECTIONISM THAT SCALES

XY Resolution: 25 microns

The Form 3BL is also powered by advanced Low Force Stereolithography (LFS)[™] technology and uses two precision Light Processing Units (LPU) inside the printer to achieve consistent accuracy and detail across the two halves of the build platform. Tried and tested on thousands of printers, this fifth-generation stereolithography 3D printing technology provides a solid basis for dependable production.



LARGE VOLUME, AT A LOWER COST

Build Volume: 33.5 × 20 × 30 cm | 13.2 × 7.9 × 11.8 in

Dental 3D printers with comparable build volumes typically come with a six-figure price tag. The Form 3BL, with everything you need to start printing and a one-year Dental Service Plan, can be yours for at an unprecedented value. Maximize throughput for every print job and print up to 120 models in a day, with just a few printer interactions.



MAXIMUM THROUGHPUT PER PRINT

The Form 3BL is thoughtfully designed to maximize the throughput per print while maintaining ideal print conditions with minimal operator intervention. You can remotely monitor and inspect your fleet of printers with the online Dashboard. Our automated resin system dispenses resin as parts print, and automated post-processing options make custom manufacturing easy. The Light Processing Units, rollers, and optics window can be replaced in-house, so you don't have to wait for a replacement printer if something goes wrong.

Compare Formlabs Dental 3D Printers



Form 3B+



Form 3BL

BUILD VOLUME
(W x D x H)

14.5 × 14.5 × 18.5 cm
5.7 × 5.7 × 7.3 in

33.5 × 20 × 30 cm
13.2 × 7.9 × 11.8 in

XY RESOLUTION

25 microns

25 microns

LASER POWER

1x 250 mW laser

2x 250 mW laser

WEIGHT

17.5 kg
38.5 lbs

54.4 kg
120 lbs

PRINTER DIMENSIONS
(W x D x H)

40.5 × 37.5 × 53 cm
15.9 × 14.8 × 20.9 in

77 × 52 × 74 cm
30.3 × 20.5 × 29.1 in

PRINT CAPACITY

Up to 8 models per print job
More than 128 models per day

Up to 50 models per print job
Up to 200 models per day

VALIDATED INDICATIONS

- Orthodontic or aligner models
- Crown and bridge models
- Surgical guides
- Splints and occlusal guards
- Full dentures
- Patterns for casting and pressing
- Custom impression trays
- Temporary and permanent restorations
- Indirect bonding trays
- Maxillofacial and diagnostic models

- Orthodontic or aligner models
- Surgical guides
- Splints and occlusal guards
- Custom impression trays
- Maxillofacial models and diagnostic models

THE FORM 3B+ IS IDEAL FOR

- Dental and orthodontic labs and practices
- Multiple quick prints per day
- Printing a single part or smaller batches
- Switching between indications or printing multiple different indications concurrently on multiple printers

THE FORM 3BL IS IDEAL FOR

- Dental and orthodontic labs
- Minimum user interactions
- Printing large batches of parts
- Single application production focus

Formlabs Dental Ecosystem

High precision 3D printing, a growing library of specialized materials, intuitive software, and professional services, all in one package.



FORM 3B+

Includes the essential tools required to start printing high-quality dental parts and biocompatible appliances, plus one year of our Dental Service Plan (DSP)*.



FORM 3BL

Includes the essential tools required to start printing high-quality dental parts and biocompatible appliances, plus one year of our Dental Service Plan (DSP)*.

* In North America and Europe

Validated Resins for Every Workflow

Rapidly manufacture biocompatible surgical guides, splints, fixed patterns and models, aligner models, full dentures, and more.

BIOCOMPATIBLE DENTAL RESINS



LT CLEAR



DENTURE



CUSTOM TRAY



PERMANENT CROWN



INDIRECT BONDING TRAY



TEMPORARY CB

STANDARD DENTAL RESINS



DRAFT



MODEL



CASTABLE WAX



WHITE

Simplified Post-Processing

Intuitive accessories streamline your 3D printing process to help you produce high-quality parts with less time and effort.

BUILD PLATFORM 2

Patented Quick Release Technology allows you to remove parts from the build platform without tools in seconds.

FORM WASH, FORM CURE, AND FAST CURE

Clean and post-cure parts with validated, automated solutions that keep mess and effort to a minimum.

FORM WASH L AND FORM CURE L

Automated solutions for maximum throughput.

Plug and Play Software

Prepare parts for printing with a few clicks and access your printers from the cloud with Formlabs' advanced software tools.

PREFORM DENTAL

Based on the selected indication, PreForm Dental is a workspace that automatically applies the optimal material, layer thickness, orientation, layout, and supports to your parts. With Scan to Model it also automatically converts intraoral scans into ready to print solid dental models.

Free (no annual fee).

DASHBOARD

Manage multiple printers remotely, receive alerts when a print starts and finishes, or monitor resin levels and tank usage to know when it's time to restock consumables. Upload and start a print remotely 24/7.

Free (no annual fee).

Premium Dental Support

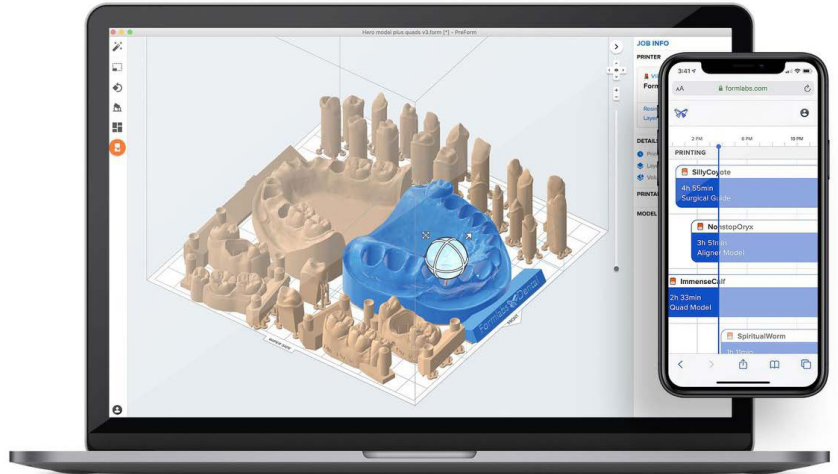
Behind Formlabs Dental is a dedicated team of certified dental specialists who know exactly how to support you.

- ✓ Phone and priority email support
- ✓ Hot swaps for hardware replacements

- ✓ Customized training
- ✓ Warranty for the duration of the plan

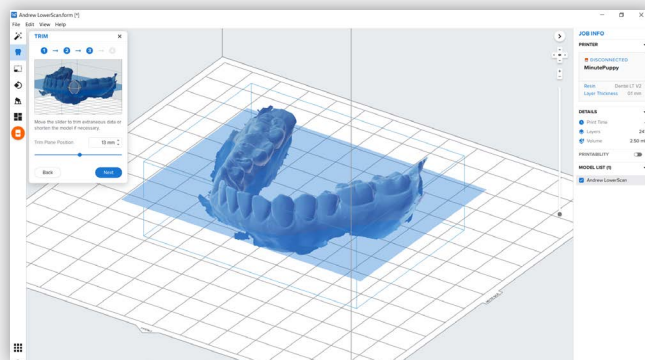
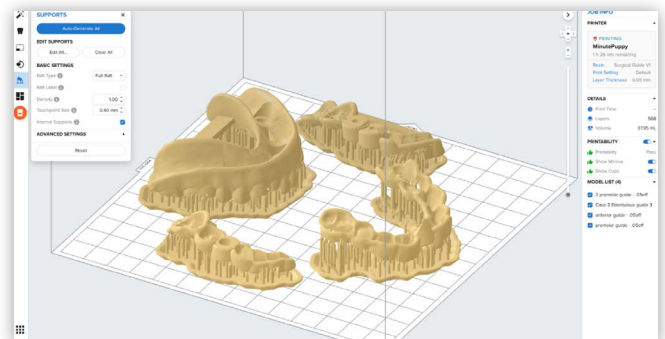
Complete Software Solutions for Dental 3D Printing

Our free software tools are designed to help your team work more efficiently. Prepare parts for printing with a few clicks and access your printers from the cloud with advanced software tools.



Save Time With Effortless Print Setup Using PreForm Dental.

This powerful workspace allows you to automatically apply the optimal material, layer thickness, orientation, layout, and supports to your parts based on the indication. Save time and cost, and setup your team for predictable success, every print.



Go from Scan to Model

Convert intraoral 3D scan files into solid, printable diagnostic models, orthodontic models, and fit check models directly in PreForm.

Fast Arch Printing*

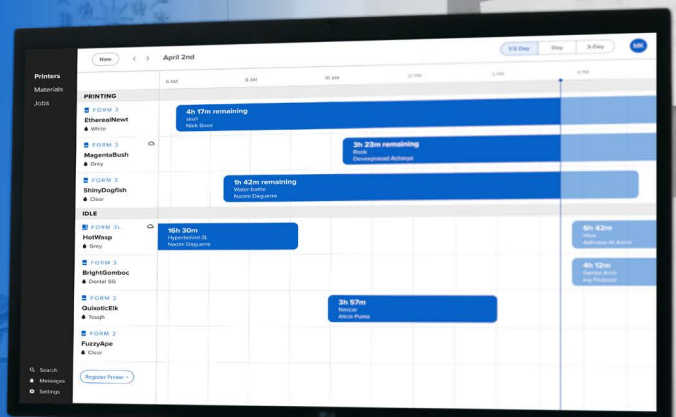
The most trusted dental 3D printer just got 2x faster. Fast Arch Printing enables you to print 8 arches in 20 minutes and a single arch in under 10 minutes** so you can go from design to delivery within one appointment.

*Available for limited resins and indications

**Draft V2 200 microns

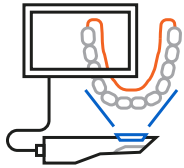
Take Print Management Anywhere With Dashboard

Monitor your printers remotely, receive alerts, or prepare your printer before you leave and then start jobs from anywhere with Remote Print.

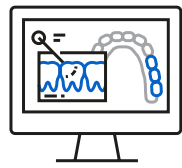


The Easy Choice for Digital Appliance Production

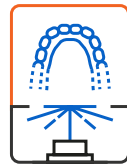
Reclaim your time and produce parts you'll be proud to deliver, without the hassle or prohibitive costs. Formlabs brings unprecedented reliability, quality, and ease of use, with validated workflows tested by a team of dental experts.



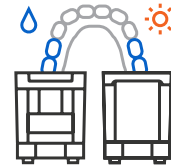
1. SCAN



2. DESIGN



2. PRINT



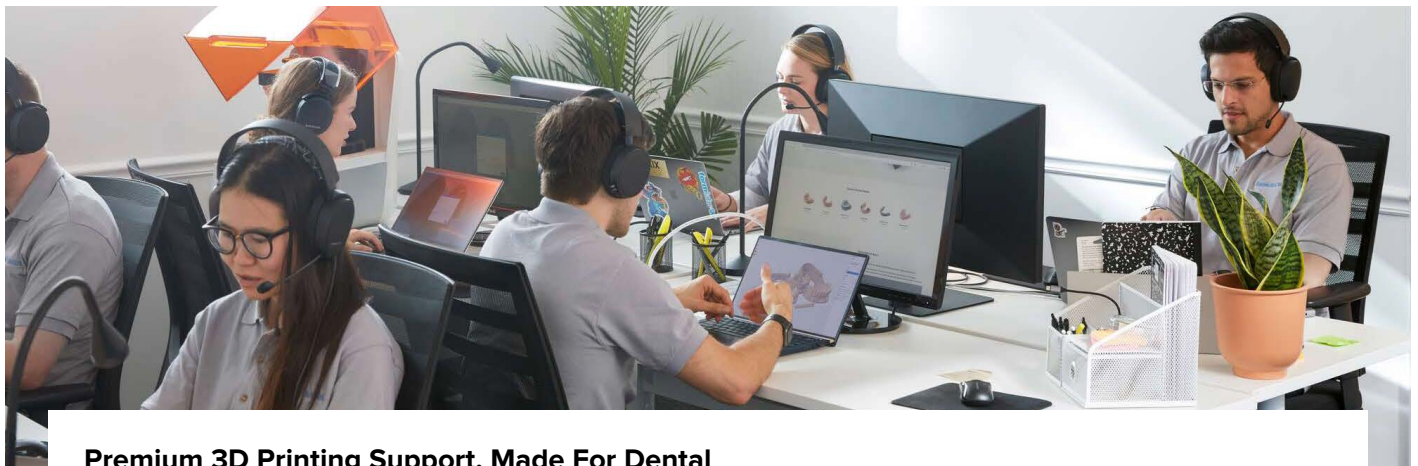
4. POST-PROCESS



5. DELIVER

Learn how digital dentistry is transforming dental workflows and how you can integrate 3D printing into your business with our free webinars, white papers, and step-by-step guides.

dental.formlabs.com/resources



Premium 3D Printing Support, Made For Dental

Behind Formlabs Dental is a dedicated team of certified Dental Support Specialists who know exactly how to help when you need it. Premium support is available for one, two, or three years, designed to meet your needs and bring you extra peace of mind.

PRIORITY ACCESS TO CERTIFIED DENTAL AGENT

A direct line to a Certified Dental Agent and prioritized email support from our dedicated staff.

CUSTOMIZED TRAINING

A training session over video with a Certified Dental Agent, customized to you

HOT SWAPS FOR HARDWARE REPLACEMENTS

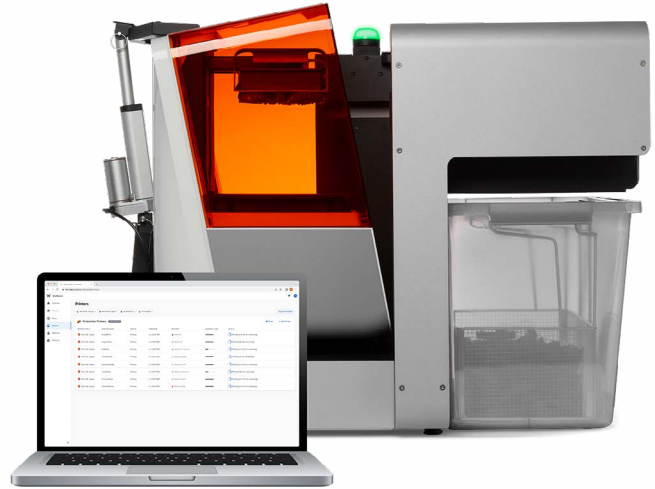
Ensure constant uptime: Formlabs Dental will ship you a replacement printer to keep you printing if your printer needs to be repaired or replaced.

WARRANTY FOR THE DURATION OF THE PLAN

The Dental Service Plan extends the one-year warranty included with your printer to the full duration of the chosen plan.

Maximize the Throughput of Your Form 3B+ Fleet with the Automation Ecosystem

Reach new levels of productivity with a fully automated 3D printer fleet for 24/7 part production without any operator intervention with Form Auto, Fleet Control, and the High Volume Resin System.



Peace of Mind With Validated Workflows

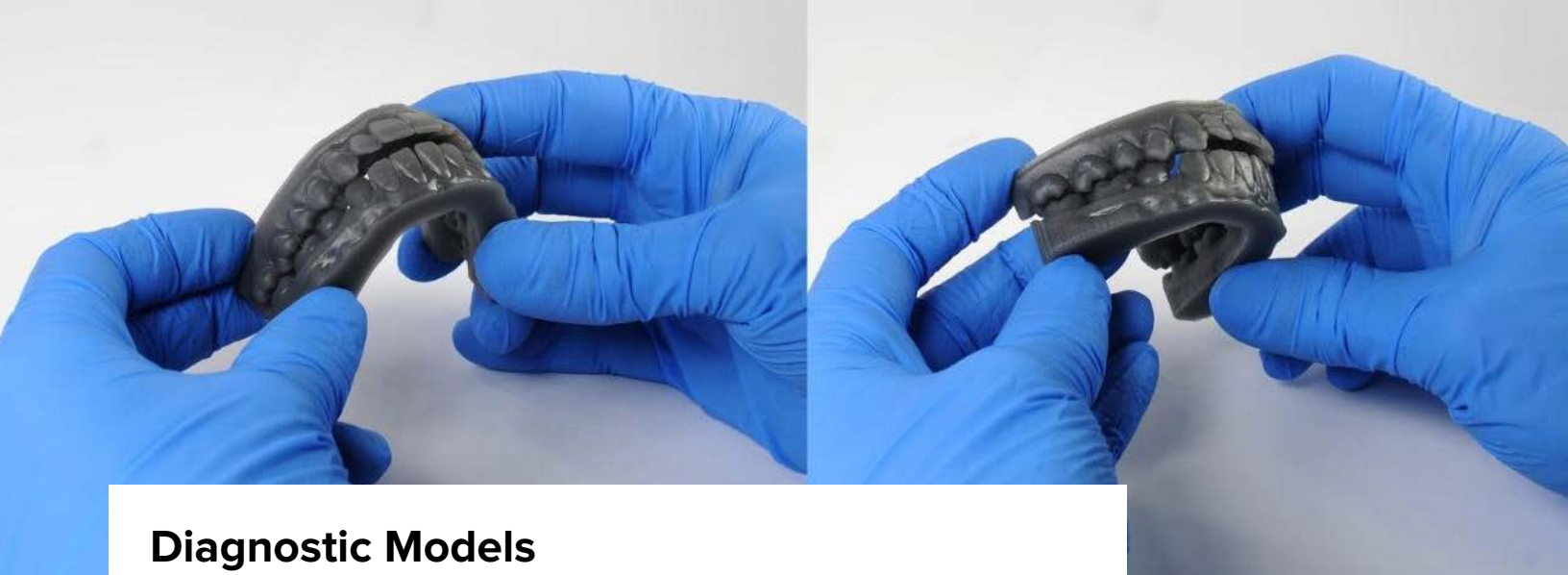
Each of our materials undergo rigorous performance and safety testing to pass strict hardware, software, and finished product performance requirements across more than 80 total printers. The recommended workflows are also externally tested by industry leaders to make sure they meet real world clinical requirements.



The Perfect Finish

Intuitively designed accessories streamline post-processing so you can consistently produce quality results with less time and cure dental parts in under six minutes and as fast as one minute with Fast Cure to allow more efficient patient treatments.





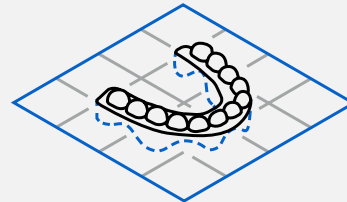
Diagnostic Models

The easiest workflow for creating diagnostic models.

Manufacture models for visualizing patient anatomy and case planning, and boost case acceptance with presentation models for patient education. Formlabs offers multiple material options. Use Draft Resin for fast printing, Model Resin for stone-colored models, or White Resin for bright presentation models.

SCAN TO MODEL

With PreForm's **Scan to Model feature**, there's no need for a standalone dental design software—you can turn digital impressions directly into diagnostic models for printing on Formlabs 3D printers.



INDICATION	PRINT COST	CAPACITY ON THE FORM 3B+	CAPACITY ON THE FORM 3BL
Horseshoe diagnostic model (Draft Resin at 200 µm)	2-3 € (per arch)	Up to 8 models per print in ~20 min or 1 model in ~10min*	Up to 24 models per print in ~2.5 h
Palatal diagnostic model set (Draft Resin at 200 µm)	6-8 € (per set)	Up to 3 model sets print in ~30min or 1 set in ~14min	Up to 10 model sets per print in ~3 h

Print costs, times, and capacity may vary depending on your model and print settings.

*with Fast Arch Printing

BENEFITS

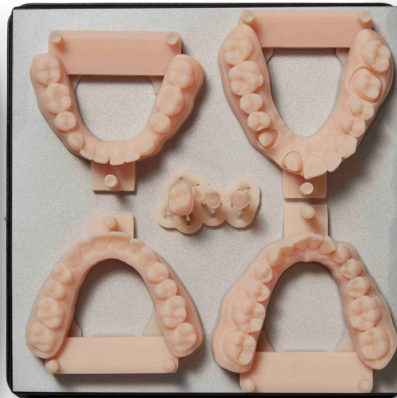
- ✓ Diagnostic models for as little as 2 € per arch
- ✓ Multiple material options
- ✓ No additional software required

PRINTER COMPATIBILITY

- ✓ Form 2
- ✓ Form 3B
- ✓ Form 3B+
- ✓ Form 3BL



White Resin



Model Resin



Draft Resin

Form 3BL Build Platform



Orthodontic or Aligner Models

Produce cost-effective vacuum-formed clear aligners and retainers in-house.

Streamline your workflow and provide the best patient experience by delivering precise fitting aligners quickly, without breaking the bank. With Draft Resin, Formlabs SLA 3D printers are the perfect choices for any orthodontic practice or lab looking to bring aligner and retainer production in house. Fabricate models to vacuum form clear aligners, retainers, splints, Hawley retainers or other devices.

“The ease of use of both the printer and the PreForm software makes it possible to delegate almost all of the pieces of the workflow from post design to packaged aligners. The fact that the printing and fabrication process can be delegated is huge. It is easy enough to use that the orthodontic assistants in the practice can manage this with very little input from the doctor. Interestingly enough and somewhat to my surprise, all of my assistants prefer the digital workflow as opposed to having to deal with impressions, pouring up and trimming models, etc. I think it just makes their life easier. The easy usability by my staff has made the Formlabs printers a simple choice, which is why I have three of them.”

– Jay Burton, DMD, MBA, board-certified orthodontist SmileMaker Orthodontics.

BENEFITS

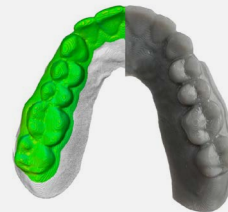
- ✓ Orthodontic models for as little as 2 € per arch
- ✓ Ready to use products within one day

PRINTER COMPATIBILITY

- ✓ Form 2
- ✓ Form 3B
- ✓ Form 3B+
- ✓ Form 3BL

ACCURACY STUDY

Don't sacrifice quality for faster print speed. Draft Resin, even printing at speed, produces highly accurate orthodontic models. Printed at 200 microns, 98% of surfaces are within 100 microns of actual scans.



INDICATION	PRINT COST	CAPACITY ON THE FORM 3B+	CAPACITY ON THE FORM 3BL
Orthodontic Models, Direct to the Build Platform (Draft Resin at 200 µm)	2-3 €	Up to 8 models per print in ~20 min or 1 model in ~10min*	Up to 24 models per print in ~2.5 h
Orthodontic Models, Direct to the Build Platform (Draft Resin at 100 µm)	2-3 €	Up to 8 models per print in ~1 h*	Up to 24 models per print, print settings coming soon
Orthodontic Models, Near Vertical (Draft Resin at 100 µm)	2-3 €	Up to 18 models per print in ~5.5 h	Up to 52 models per print, print settings coming soon

Print costs, times, and capacity may vary depending on your model and print settings.

* with Fast Arch Printing



Crown and Bridge Models

Confidently check fixed prosthetics with fast-printing, high-accuracy restorative models.

Quickly produce high-quality solid, removable die, and implant models with crisp margins and contacts. Labs of any size can deliver high-quality results in digital restorative cases with ease.

“The Form 3B satisfies high quality standards that dental professionals need to produce high-end restorations. It combines consistency, high accuracy and unprecedented surface quality in one easy-to-use product and enables every dental lab to start a digital in-house production.”

– Stephan Keimer, MDT, Manager at Kreimer Dentallabor GmbH & Co. KG.

BENEFITS

- ✓ Fast printing and post-processing
- ✓ Rapid return on investment
- ✓ Easy to learn, use, and delegate

PRINTER COMPATIBILITY

- ✓ Form 2
- ✓ Form 3B
- ✓ Form 3B+
- ✓ Form 3BL



INDICATION	PRINT COST	CAPACITY ON THE FORM 3B+
Quadrant models for fixed prosthetics	2-4 € a kit	Up to 4 quad model kits (upper, lower, and die) in ~2.5 h
Full arch models for fixed prosthetics	6-8 € a kit	Up to 2 full arch model kits (upper, lower, and die) in ~2.5 h

Print costs, times, and capacity may vary depending on your model and print settings.



Temporary and Permanent Restorations

The first tooth-colored resins for 3D printing temporary and permanent dental restorations.

Reduce the costs associated with current crown and bridge fabrication and free up milling capacity, while simultaneously increasing the quality of the end product. Use completely digital dental workflows with 3D printed restorations to enable a quick, low cost, collaborative process between dentist, technician, and patient.

Temporary CB Resin is a tooth-colored resin for 3D printing of temporary crown and bridge restorations, inlays, onlays, and veneers. Indicated for up to seven-unit bridges and up to 12 months, this material provides excellent marginal adaptation, strength, and aesthetics.

Permanent Crown Resin is a tooth-colored, ceramic-filled resin for 3D printing of permanent single crowns, inlays, onlays, and veneers. Permanent Crown Resin produces high strength, long term restorations with an accurate and precise fit. Low water absorption and a smooth finish ensure restorations have a low tendency to age, discolor, or accumulate plaque.

"Once again Formlabs has proven the versatility of Form 3B with a wide range of quality and biocompatible resins for our dental activity. Printing permanent prostheses is a real comfort! A new era is emerging to manage and produce clinical cases. A new paradigm is born."

– MDT Samuel Morice, CO Director of Argoat Prothèse

BENEFITS

- ✓ Excellent marginal adaptation, strength, and aesthetics
- ✓ Negligible initial investment
- ✓ Free up milling capacity

PRINTER COMPATIBILITY

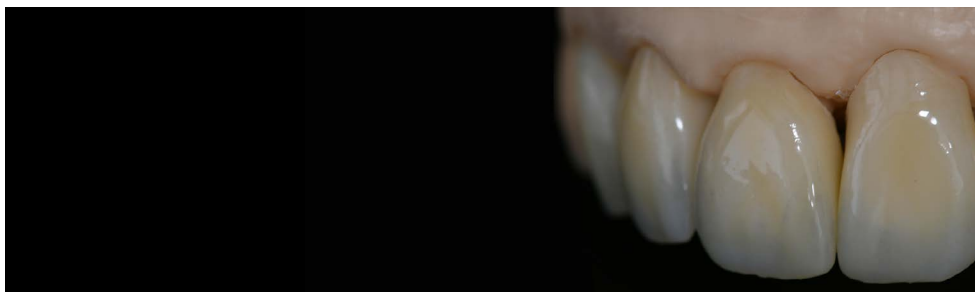
- ✓ Temporary CB Resin:
Form 2, Form 3B+
- ✓ Permanent Crown Resin:
Form 3B+

AVAILABLE SHADES

- ✓ Temporary CB Resin
A2, A3, B1, C2 and Bleach
- ✓ Permanent Crown Resin
A2, A3, B1, and C2

INDICATION	PRINT COST	CAPACITY ON THE FORM 3B+
Temporary crowns and bridges	\$2 USD a unit	One crown in ~40 min or up to 100 units in ~5 h
Permanent crowns	\$<5 USD a unit	One crown in ~40 min or up to 130 crowns per print in ~5.5 h

Print costs, times, and capacity may vary depending on your model and print settings.



BIOCOMPATIBILITY AND AVAILABILITY

All materials indicated for biocompatible applications were rigorously tested to meet ISO standard requirements for the appropriate application. If more information is needed, please visit dental.formlabs.com/materials. Regional availability may vary. For more information, please visit dental.formlabs.com/regional-availability or contact sales or your authorized reseller.



Surgical Guides

Perform precise, cost-effective surgeries with better clinical outcomes.

Surgical Guide Resin is a Class I, CE certified biocompatible resin for applications including 3D printing dental surgical guides for implant placement. Developed specifically for Formlabs printers and rigorously tested with autoclaves, solvents, and implant systems, this material was designed from the ground up to exceed dental demands in part quality, accuracy, and performance. Take advantage of digital implantology to reduce chairside time, improve patient experience, and achieve high-precision implant placement with ease.

“Recently we began using the new Surgical Guide Resin, and have been extremely impressed with this new material. The strength of the new resin is INCREDIBLE! It is essentially unbreakable. When utilizing the new Form 3B, along with the improved surface finish of Surgical Guide Resin and the dimensional stability, it has been possible to produce beautiful, durable guides for our patients with an increase in quality and productivity, but at no increase in cost.”

– Dr. Timothy Hart, DDS, MS, Prosthodontist

BENEFITS

- ✓ Guided surgery for as little as 2-4 € per guide
- ✓ Autoclavable in industry standard sterilization units
- ✓ Easier, faster implant placement

PRINTER COMPATIBILITY

- ✓ Form 2
- ✓ Form 3B
- ✓ Form 3B+
- ✓ Form 3BL

ACCURACY STUDY

Using Surgical Guide Resin, the Form 3B+ consistently produces high accuracy surgical guides to help you guarantee accurate implant placement.

ACCURACY RANGE	SURFACE IN ACCURACY RANGE
● ± 100 µm	94% ± 4%

Validation parts were printed using Model Resin on Form 3B printers. Results may vary.

Full Arch Edentulous Surgical Guide
Surgical Guide Resin, at 100µm Layer Height



INDICATION	PRINT COST	CAPACITY ON THE FORM 3B+	CAPACITY ON THE FORM 3BL
Quadrant surgical guide	2-3 €	Up to 29 per print in ~5 h	24 guides (14 full arches and 10 quad surgical guides) per print in ~7.5 h
Full arch surgical guide	3-6 €	Up to 8 per print in ~4 h	

Print costs, times, and capacity may vary depending on your model and print settings.

BIOCOMPATIBILITY AND AVAILABILITY

All materials indicated for biocompatible applications were rigorously tested to meet ISO standard requirements for the appropriate application. If more information is needed, please visit dental.formlabs.com/materials. Regional availability may vary. For more information, please visit dental.formlabs.com/regional-availability or contact sales or your authorized reseller.



Splints and Occlusal Guards

Directly print affordable, high-quality occlusal splints in-house.

Manufacture affordable, high-quality occlusal guards and splints in-house with Dental LT Clear Resin, long-term biocompatible material. Highly durable and resistant to fracture, this color-corrected material prints clear, polishes to high optical transparency, and resists discoloration over time for a finished appliance you'll be proud to deliver..

"After testing the new Dental LT Clear (V2) resin from Formlabs, I am impressed with the improved resiliency, strength, and clarity of this resin. These factors will definitely have a positive impact on patient comfort and acceptance."

– Rick Ferguson DMD, DABOI/ID, DICOI, Implant Educators Academy

BENEFITS

- ✓ High quality splint in 45 minutes, for 4-5 € per part
- ✓ Color-corrected material, polishes to high optical transparency
- ✓ Highly durable and resistant to fracture

PRINTER COMPATIBILITY

- ✓ Form 2
- ✓ Form 3B
- ✓ Form 3B+
- ✓ Form 3BL

ACCURACY STUDY

Using Dental LT Clear Resin, the Form 3B+ consistently produces high accuracy occlusal guards and splints.

ACCURACY RANGE	SURFACE IN ACCURACY RANGE
● ± 100 µm	96% ± 5%

Validation parts were printed using Dental LT Clear Resin on Form 3B printers.

Occlusal splint
Dental LT Clear Resin, at 100 µm Layer Height



INDICATION	PRINT COST	CAPACITY ON THE FORM 3B+	CAPACITY ON THE FORM 3BL
Occlusal splints	4-5 € a part	6 splints per print in ~4 h	Up to 24 splints per print, print settings coming soon

Print costs, times, and capacity may vary depending on your model and print settings.

BIOCOMPATIBILITY AND AVAILABILITY

All materials indicated for biocompatible applications were rigorously tested to meet ISO standard requirements for the appropriate application. If more information is needed, please visit dental.formlabs.com/materials. Regional availability may vary. For regions where Dental LT Clear (V2) is not available, consider Dental LT Clear Resin. For more information, please visit dental.formlabs.com/regional-availability or contact sales or your authorized reseller.

Indirect Bonding Trays

A flexible biocompatible material for efficient, accurate dental bracket placement.

3D printed indirect bonding trays reduce chair time and increase patient comfort by placing all of the brackets or entire quadrants at once. Class I compliant IBT Resin offers optimized tear strength, translucency, and flexibility, for appliances that are easy to plan, easy to use, and easy to remove.

“Clinically, I found indirect bonding trays printed using Formlabs IBT Resin to be accurate, easy to place and remove.”

— Dr. Lisa Alvetro, Orthodontist, Alvetro Orthodontics

“With several years of experience in printing indirect bonding trays, I found the Formlabs IBT Resin to be accurate and easy to print using the PreForm software. I love that the Formlabs IBT Resin has very minimal odor. The printed indirect bonding trays are effortless to remove from the build platform and the post processing steps are very simple to follow. Printing with the Formlabs IBT Resin has been a very positive experience!”

— Patricia Mitchell, Digital Specialist, Alvetro Orthodontics



BENEFITS

- ✓ Flexible, translucent appliances are easy to work with
- ✓ Easy to remove from the mouth without moving brackets
- ✓ Comfortable for the patient

PRINTER COMPATIBILITY

- ✓ Form 2
- ✓ Form 3B
- ✓ Form 3B+
- ✓ Form 3BL

BIOCOMPATIBILITY AND AVAILABILITY

All materials indicated for biocompatible applications were rigorously tested to meet ISO standard requirements for the appropriate application. If more information is needed, please visit dental.formlabs.com/materials. Regional availability may vary. For more information, please visit dental.formlabs.com/regional-availability or contact sales or your authorized reseller.

INDICATION	PRINT COST	CAPACITY ON THE FORM 3B+
Indirect bonding tray	~6 € a tray	Up to 6 trays per print in ~2 hours

Print costs, times, and capacity may vary depending on your model and print settings.



Digital Dentures

The first truly accessible direct 3D printed dental prosthetic

Formlabs is expanding access to digital dentures with an efficient, cost-effective manufacturing solution, Formlabs Digital Dentures. Class II long-term biocompatible Denture Base Resin and Denture Teeth Resin enable dental professionals to produce 3D printed dentures accurately and reliably. Digital denture manufacturing fits seamlessly into traditional clinical protocol, but is also ready for purely digital workflows once they become widely adopted.

“The Formlabs printer is a very cost-efficient way for our lab to 3D print digital dentures. Moreover, because of the printer’s affordability, it is easier to have multiple printers running with different resins. Integration with Formlabs Dashboard and using their support for 3D printed dentures will be a critical part of our removables department as we move forward.”

– Joseph Lee, CTO, Friendship Dental Lab

BENEFITS

- ✓ Low-cost production for as little as 10 € per final denture
- ✓ Accurate, consistent, high-quality results
- ✓ Fits into your traditional processes

PRINTER COMPATIBILITY

- ✓ Form 2
- ✓ Form 3B
- ✓ Form 3B+



AVAILABLE SHADES:

- ✓ Formlabs Denture Teeth **A1, A2, A3, A3.5, B1, and B2**
- ✓ Formlabs Denture Base **LP** (light pink), **OP** (original pink), **RP** (red pink), **DP** (dark pink)

INDICATION	PRINT COST	CAPACITY ON THE FORM 3B+
Denture teeth	3-5 € a part	Up to 8 denture teeth sets per print in ~5 h
Denture bases	5-7 € a part	Up to 8 denture bases per print in ~10 h

Print costs, times, and capacity may vary depending on your model and print settings.

BIOCOMPATIBILITY AND AVAILABILITY

All materials indicated for biocompatible applications were rigorously tested to meet ISO standard requirements for the appropriate application. If more information is needed, please visit dental.formlabs.com/materials. Regional availability may vary. For more information, please visit dental.formlabs.com/regional-availability or contact sales or your authorized reseller.



Custom Impression Trays

Cost-effective impression trays for implants, dentures, crowns and bridges, and other comprehensive cases.

Directly print impression trays for implants, dentures, crowns and bridges, and other comprehensive cases. Digitally manufactured impression trays provide consistent, accurate impressions for high-quality dentistry. Custom Tray Resin prints full impression trays quickly using 200 micron layer heights, reducing labor time and enabling higher throughput.

"I have always felt that custom trays are an important part of clinical dentistry, especially implant dentistry. Formlabs Custom Tray Resin prints impressively fast. The resin, itself, is rigid and nicely translucent. This translucency is a significant aide in making final adjustments for an open tray impression of implant copings. The cost of printing a custom tray on a Form 2 or Form 3B is substantially less than using the traditional light-cure sheet on a physical model. Couple that with the swift and economical design process and the elimination of any need for a physical preliminary model. In-house custom trays will not only improve your clinical outcomes, but the workflow can actually have a reasonably short ROI, even if custom trays were the only reason you bought a 3D printer."

– Dr. Timothy Hart, DDS, MS, Prosthodontist

BENEFITS

- ✓ Custom impression trays for as little as 7 €
- ✓ One impression tray in under an hour
- ✓ Consistent and accurate, impressions

PRINTER COMPATIBILITY

- ✓ Form 2
- ✓ Form 3B
- ✓ Form 3B+
- ✓ Form 3BL



BIOCOMPATIBILITY AND AVAILABILITY

All materials indicated for biocompatible applications were rigorously tested to meet ISO standard requirements for the appropriate application. If more information is needed, please visit dental.formlabs.com/materials. Regional availability may vary. For more information, please visit dental.formlabs.com/regional-availability or contact sales or your authorized reseller.

INDICATION	PRINT COST	CAPACITY ON THE FORM 3B+
Custom impression tray	7-9 € per tray	Up to 8 trays per print in ~6 h or 1 tray in under 1 h

Print costs, times, and capacity may vary depending on your model and print settings.



Patterns for Casting and Pressing

Produce highly accurate patterns for crowns and bridges, copings and substructures, and removable partial denture frames (RPDs) in-house, at the lowest cost per part in the industry.

Tested at length by dental technicians, Castable Wax Resin provides accurate, sealed margins and contains 20% wax for reliable casting with clean burnout. Printed patterns are strong enough to handle with no post-cure required, allowing for a faster, simpler workflow.

"Castable Wax Resin fits seamlessly into my existing workflow and complements my milling machine perfectly. It allows me to print removable partial denture patterns for casting or even crown and bridge patterns for pressing. The material burns out cleanly and is easy to work with."

– Stephan Kreimer, Master Dental Technician (MDT), Kreimer Dentallabor GmbH & Co. KG

BENEFITS

- ✓ Accurate fit to abutments with sealed margins
- ✓ Best cost per part and equipment cost in the industry
- ✓ Industry-leading ease of use with simple to follow workflow

PRINTER COMPATIBILITY

- ✓ Form 2
- ✓ Form 3B
- ✓ Form 3B+



INDICATION	PRINT COST	CAPACITY ON THE FORM 3B+
Crowns and/or copings	0.25-0.50 €	Up to 100 parts per print in ~8 h
RPD frames	3-5 €	Up to 7 frames per print in ~8 h

Print costs, times, and capacity may vary depending on your model and print settings.



Implant Analog Models

Replicate soft tissues for high-accuracy digital implant models.

Use one 3D printer to create both rigid models and flexible gingiva masks to confidently check implant prosthetics with proper tissue impingement.

Alongside Model Resin for printing rigid models, use the Soft Tissue Starter Pack to create your own Soft Tissue Resin in customizable dark, medium, and light pink shades.

"Model Resin and implant models are spot on. Predictable and reliable is what we need, and this resin performs to our expectations when it comes to producing accurate and simple implant models for our patients' treatment."

– Alan Jurim, DDS, Director of Digital Dentistry, Touro College of Dental Medicine



Photos courtesy of Dr. Alan Jurim

BENEFITS

- ✓ Mimics gingiva or other firmer soft tissue (80A Shore durometer)
- ✓ Customizable color pigments
- ✓ Easy to relieve/cut with a dental tool for easy adjustments

PRINTER COMPATIBILITY

- ✓ Form 2
- ✓ Form 3B
- ✓ Form 3B+
- ✓ Form 3BL

INDICATION	PRINT COST	CAPACITY ON THE FORM 3B+
Gingiva mask	1-3 €	Up to 26 parts per print in ~4 h
Quadrant implant analog model	2-4 €	Up to 4 quad model kits per print in ~2.5 h
Full arch implant analog model	4-6 €	Up to 2 full arch model kits per print in ~2.5 h

Print costs, times, and capacity may vary depending on your model and print settings.

AVAILABILITY

Regional availability may vary. For more information, please visit dental.formlabs.com/regional-availability or contact sales or your authorized reseller.

Formlabs Dental

Your Partner for Innovation

Since 2016, Formlabs has revolutionized dental 3D printing by bringing reliability, high quality, and ease of use to the technology, at a fraction of the price of legacy industry brands.

Formlabs Dental, established as a business unit in 2019, has touched the lives of hundreds of thousands of patients through the thousands of dental and orthodontic professionals who use 3D printing. From the practice to the lab, Formlabs products are at home in any dental business.

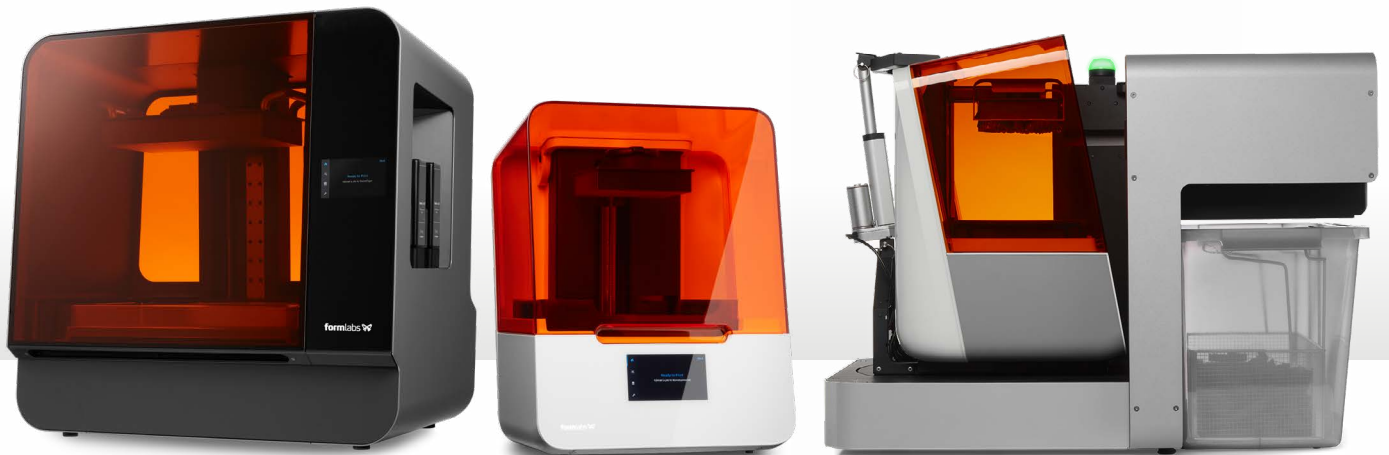
Trusted by Dental Industry Leaders

Formlabs Dental products are backed by the strongest team in 3D printing, with 75+ support and service staff, and 150+ materials scientists and engineers.

350,000+ BIOCOMPATIBLE APPLIANCES

10,000,000+ DENTAL PRODUCTS PRINTED

10,000+ DENTAL PROFESSIONALS



North America Sales Inquiries

sales@formlabs.com
617-702-8476

dental.formlabs.com

Europe Sales Inquiries

eu-sales@formlabs.com
+44 20 3037 8983 (UK)
+49 1573 5993322 (EU)

dental.formlabs.com/eu

International Sales Inquiries

Find a reseller in your region:
formlabs.com/find-a-reseller