

HUGE



Shandong Huge Dental Material Corporation

Add / No.68 Shanhai Road, Donggang District, Rizhao City, Shandong Province, 276800, P.R. China.

Tel / +86 (633) 2277268 marketing@hugedental.com www.hugedental.com

Facebook Huge Dental

Instagram Huge Dental

Youtube Huge Dental

CLINICAL SOLUTION



# CLINICAL SOLUTION

**01** Invisible Orthodontic Aligner



**02** Digital Intraoral Scanner



**03** PERFIT Impression Materials



**04** Glass Ionomer Cement Restorative Materials



**05** TopCEM Adhesive Resin Cement Solution

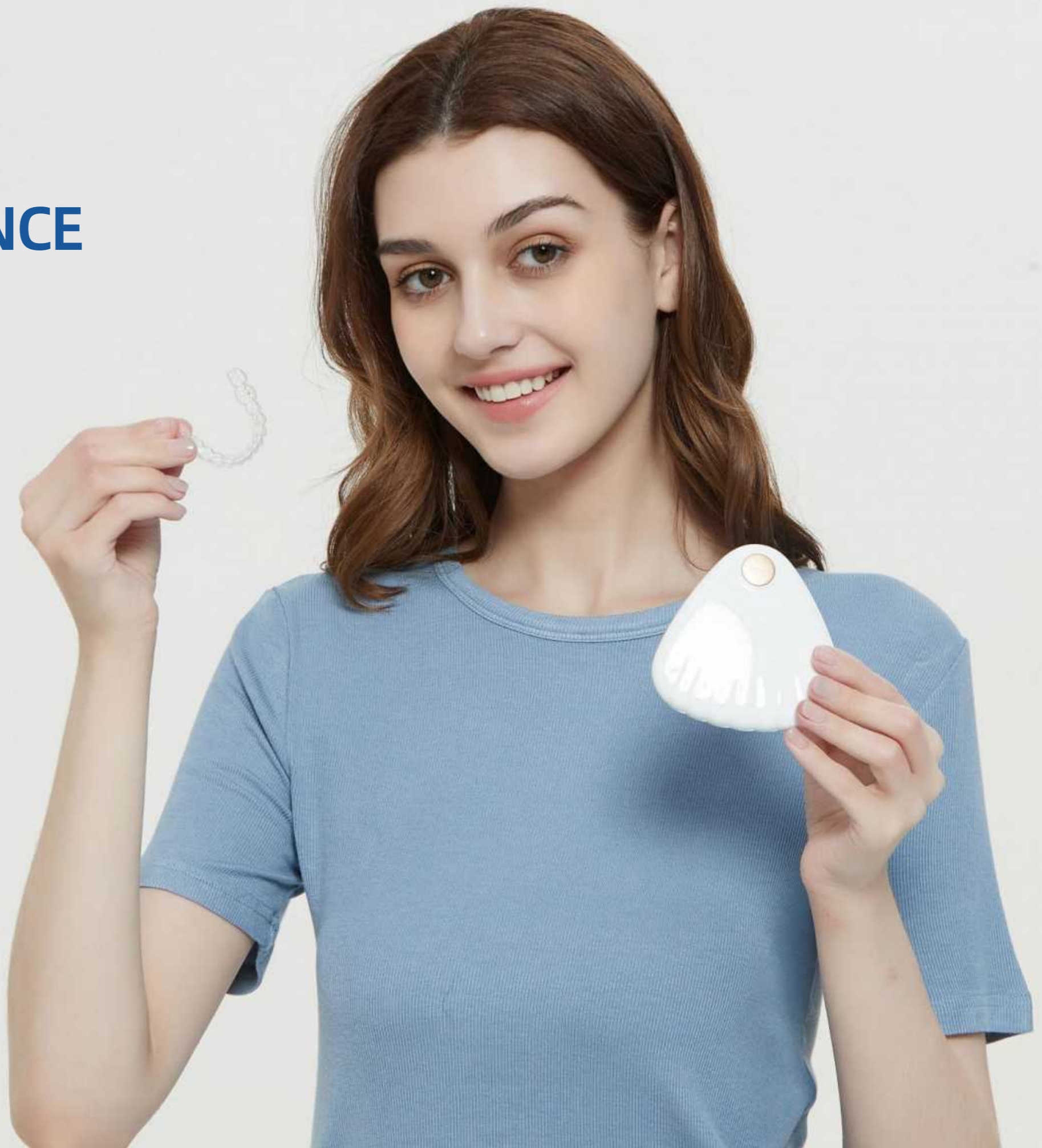
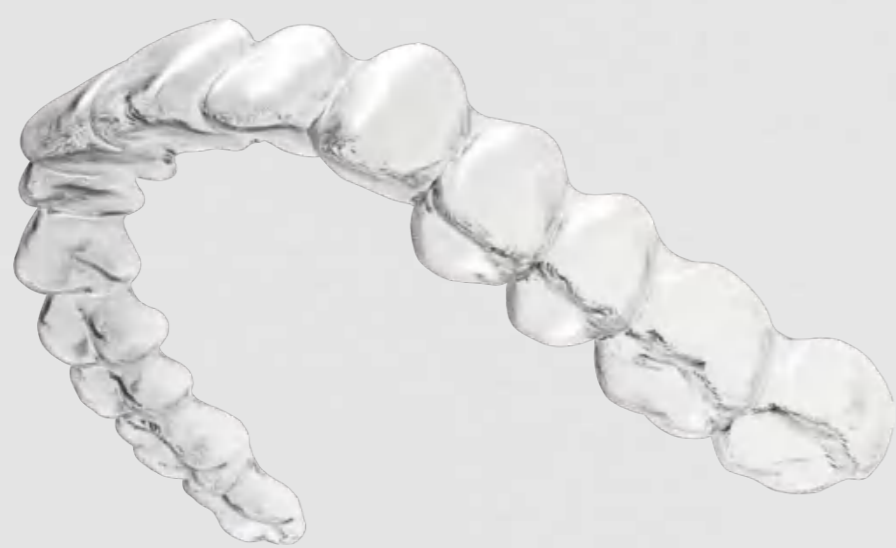


**06** TrusFIL Composite Restorative Solution





# ORTHODONTIC APPLIANCE



# Why HUGE Clear Aligner?

- 01 Innovative Double-Aligner System**  
To ensure the ideal treatment outcomes, HUGE takes the soft aligner to start gently and uses the thicker aligner to control dental root movement precisely.
- 02 Full Treatable Cases**  
HUGE covers the treatable cases from mild cases to complicated cases, suitable to correct various malocclusions.
- 03 Expert Orthodontist-Led Team**  
Programmed by the expert HUGE orthodontist-led team with scientific and accurate tooth movement, the 3D plan satisfies the requests from doctors and patients.
- 04 Intelligent Software & System**  
The self-built system and portal from HUGE provide the ortho system & dealer system.  
The convenient multi-interface 3D viewers include Web, Studio, and APP.  
The intelligent 3D treatment plan sharing-link function is conducive to effective communication.

- 05 Short Turnaround Time**  
HUGE pursues the high-efficient 3+4 mode, 3 days for 3D plan programming, and 4 days for aligners fabrication.
- 06 Professional Training Supports**  
HUGE offers online and offline training courses for better doctor practice potential exploration and development.

Your Smile.  
Our Mission.



## Classic Aligner

Supported by HUGE professional orthodontist team, HUGE Classic aligners are made of the high-quality biomedical polymer material to give the new smiles.

## Premium Aligner

With a soft aligner and a hard aligner for each step, HUGE Premium helps speed up complex tooth movement, even more comfortable.

## Retainer

Make the teeth retain their proper alignment, keeping the teeth at the ideal position, minimising any relapse.



## Premium Aligner



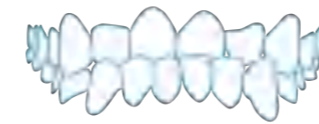
# White Label Service

- **Full Treatable Cases:** including Software + Treatment Plan
- **Clear aligner fabrication:** fabricate the aligners with your brand
- **Integrated solution:** including Software + Treatment Plan + Aligners



## Indications

The Invisible Orthodontic Appliance is indicated for the correction of tooth malocclusion in patients with permanent dentition. The Invisible Orthodontic Appliance moves the teeth by continuous gentle force.



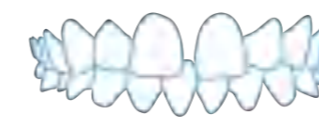
Underbite



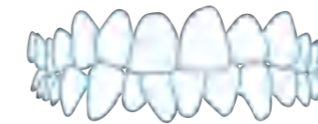
Open Bite



Deep Overbite



Spaced Teeth



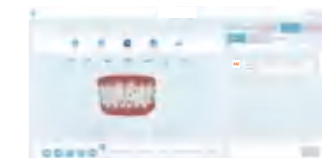
Crowded Teeth



Protrusion

## Process of Clinical Application

- **Clinical reception**  
Clinical examination + necessary treatment + photos and X-rays
- **Case submission**  
PVS impression/oral scanning file + photos and X-rays
- **3D scheme confirmation**  
scheme review + suggestion submission + scheme confirmation
- **Aligner fabrication**  
3D printing + compressing impression + cutting + trimming and polishing
- **Wearing**  
Clinic operation + patients' wearing guidance
- **Completion of treatment**  
Confirmation form + photos and X-rays + impression taking + retention



**IMPRESSION MATERIAL**





## PERFIT Putty

### Indication

- Crowns, bridges, inlays, onlays, implant and orthodontics impression.
- Recommended to take two-step impression technique together with PERFIR Light Body.

### Advantages

- Easy to operate.
- Good linear dimensional stability.
- High tear strength and tensile strength.
- Available in normal set and fast set.



**Packaging**  
400g\*1 Base  
400g\*1 Catalyst  
2 Measuring Spoons



**Packaging**  
400g\*1 Putty Base  
400g\*1 Putty Catalyst  
2 Measuring Spoons  
50ml\*1 Light Body Bio-cartridge



**Packaging**  
400g\*1 Putty Base  
400g\*1 Putty Catalyst  
2 Measuring Spoons  
50ml\*1 Light Body Bio-cartridge



# Elastomeric Impression Material

**PERFIT** elastomeric impression material is a high viscosity vinyl polysiloxane impression material, with remarkable tear strength, dimensional accuracy and excellent resistance to deformation.

Technical Parameter	Putty		Light Body	
	Normal Set	Fast Set-New	Normal Set	Fast Set-New
Type	Normal Set	Fast Set-New	Normal Set	Fast Set-New
Mixing Time	30s	30s	/	/
Total Working Time (Temperature:23°C, Humidity:50%)	1min30s	1min15s	2min15s	1min30s
Setting Time in oral cavity	3min	2min30	3min30s	2min30s
Elastic recovery	> 99.5%		> 99.5%	
Dimensional change rate	< 0.2%		< 0.2%	
Hardness Shore A	≈67		≈56	
Shelf life	2 years		2 years	

## PERFIT Light Body

### Indication

- Crowns, bridges, inlays, onlays, implant and orthodontics impression.
- Recommended to take two-step impression technique together with PERFIR Putty.

### Advantages

- Excellent hydrophilicity.
- Extraordinary flow property and stability.
- Outstanding thixotropy ensures a better clinical experience.
- Available in normal set and fast set.



**Packaging**  
50ml\*2 Cartridge



**Packaging**  
50ml\*2 Cartridge  
12 Mixer  
12 Oral tips



**Packaging**  
50ml\*1 Light Body Cartridge  
25g\*4 Putty Hand-mix  
3 Mixer  
3 Oral tips

# Elastomeric Impression Material



Technical Parameter	Heavy Body/Dispenser-Mix		Heavy Body/Auto-Mix	
	Normal Set-New	Fast Set	Normal Set-New	Fast Set
Type				
Total Working Time (Temperature:23°C, Humidity:50%)	2min	1min30s	2min	1min30s
Setting Time in oral cavity	3min30s	3min	3min30s	3min
Hardness Shore A	≈68		≈68	
Shelf life	2 years		2 years	

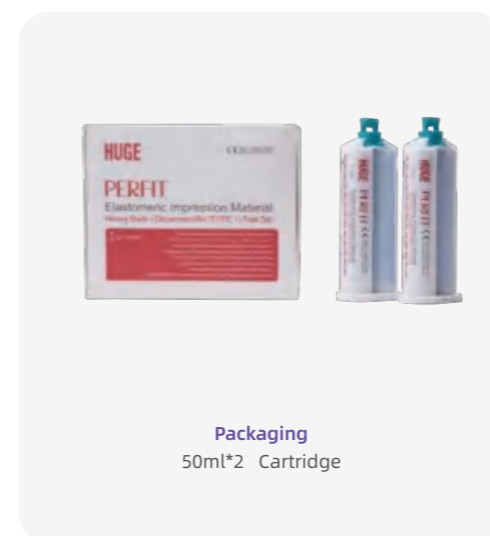
## PERFIT Heavy Body-Dispenser mix

### Indication

- Accurate impression for crowns,bridges, inlays, onlays.
- Single-step technique for implant impression.

### Advantages

- Good mixing quality, avoid bubbles.
- High precision and dimensional stability.
- High tear strength and tensile strength.
- Suitable working and setting time ensure high clinical efficiency.



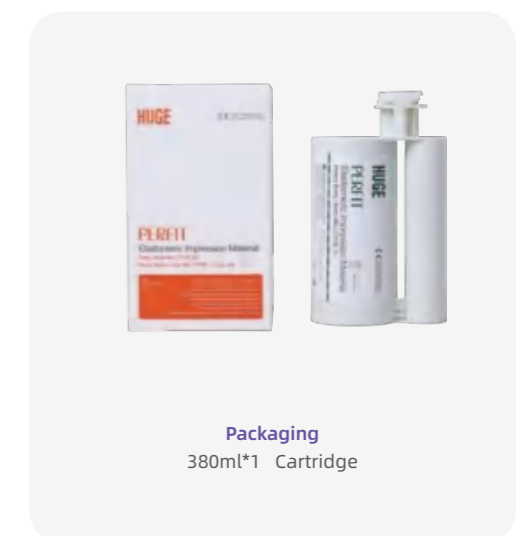
## PERFIT Heavy body-Auto mix

### Indication

- Accurate impression for crowns,bridges, inlays, onlays.
- Double-step technique with Light Body.
- Single-step technique for implant impression.

### Advantages

- Easy and efficient operation.
- Excellent ratio, saving material.
- Good mixing quality, avoid bubbles.
- High dimensional stability.
- Combination with Light body to offer higher precision.





# Impression Kit

## Home Impression Kit

### Versatile solutions

Widely used in on-line oral treatment like invisible orthodontic, teeth beauty and sports mouthguard, for patients to take teeth impression at home

#### HUGE standard package

- Putty Base 25g\*4+ Putty Catalyst 25g\*4
- Upper trays\*2 + Lower trays\*2
- Instruction for Use\*1



### Customized Options

- 01 Complete Solution Provider**  
Integrated product supply
- 02 Rich Customized Options**  
Diversified product configuration combination
- 03 Reliable Quality**  
Same material with HUGE Perfit

### Advantage



Total Solution Provider



Rich Customized Options



Reliable Quality

# A-Silicone for Bite Registration



## PERFIT Bite Registration

### Indication

- Accurate occlusal registration.

### Advantages

- Accurate bite record with high hardness
- High rigidity and easy trimming
- High dimensional stability



Technical Parameter	Bite Registration	
	Normal Set-New	Fast Set
Type	Normal Set-New	Fast Set
Total Working Time (Temperature:23°C, Humidity:50%)	30s	12s
Setting Time in oral cavity	1min30s	45s
Shore A Hardness	89	
Shelf life	2 years	

# Elastomeric Impression Material

## Regular Body-Dispenser mix

### Indication:

Efficient clinical restoration tool for making transparent guides on

- Anterior aesthetic restoration
- Indirect attachment bonding of traditional aligner
- Implant impression technique
- Occlusal stamp for light curing composite restorations

### Advantage:

- Reduce operation difficulty, improve restoration quality and clinical convenience.
- Cut down chair time and re-diagnosis.
- Minimize material waste



**Packaging**  
50ml\*2 Cartridge

Technical Parameter	Regular Body
Total Working Time (Temperature:23°C, Humidity:50%)	1min30s
Setting Time in oral cavity	3min
Total Working time	4min30s

### Features:

- EXTREME TRANSPARENCY: Guarantee the perfect photopolymerisation of the composite used for the restoration.
- IDEAL RIGIDITY: Ensure the original shape remains unaltered, and repositioning without deformations.
- HIGH AESTHETIC RESULTS: Help to achieve excellent aesthetic results, and simplify the clinical procedures.



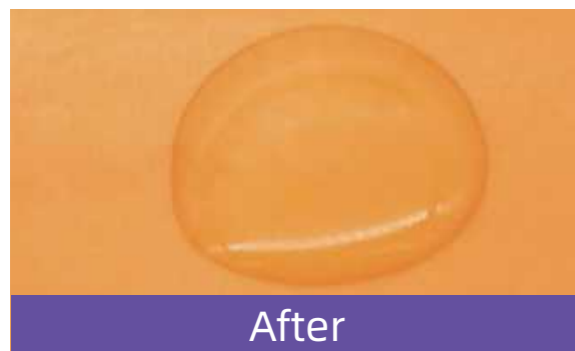
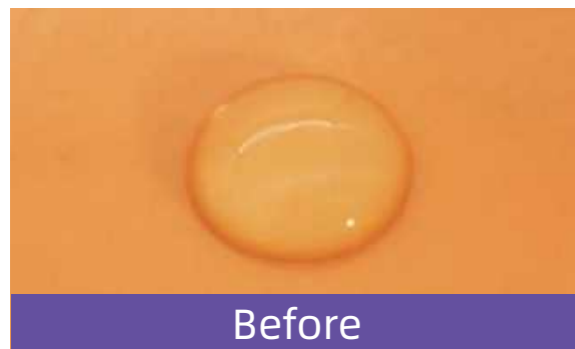


# Advantages

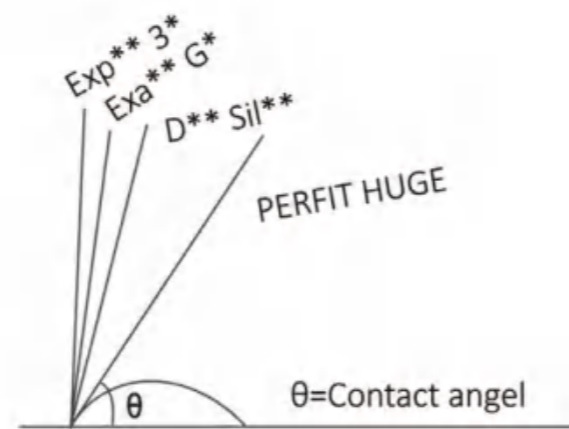
## Precise

### Waterdrop Test ▼

Hydrophilicity test in 2 secs



\*According to HUGE laboratory test results



Contact angles of Light body with different brands

Excellent hydrophilicity helps obtain the details quickly and reduce the risk of bubble formation, thus guarantee a high level of precision.



High flowability allows to reach the less accessible spaces of the gingival sulcus

### Drip Test ▼

Outstanding thixotropy ensures a better clinical experience.



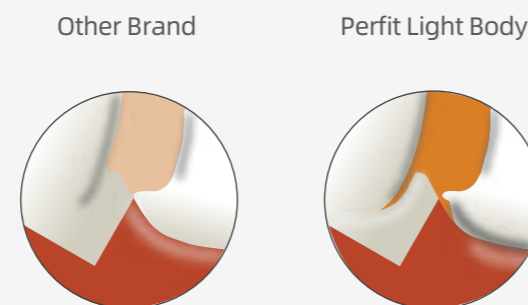
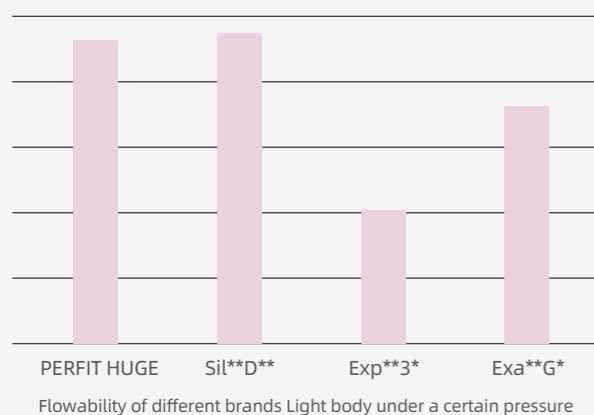
Perfit Light Body



Other Brand

VS

### Flowability Test ▼



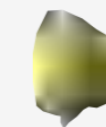
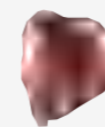
\*According to HUGE laboratory test results

HUGE  
Perfit Light Body

Sil\*\*D\*\*

Exp\*\*3\*

Exa\*\*G\*



Viscosity Test Under Static Condition

\*According to HUGE laboratory test results

# Silicone Impression Material







Stable ▼

no deformation up to 4 weeks

Due to excellent linear dimensional stability, impressions made from Perfit are very stable and can be stored for up to 4 weeks without deformation.

Excellent silicone impression material will keep the impression dimensional change rate  $< 0.2\%$ .

This is an important condition for obtaining accurate impressions. As a result, the technician can create a more precise restoration based on the impression.

	Standard Package	Trial Package	Accessory	
Putty Hand-Mix	400g*2	Putty 50g*2 + Light Body 50ml*1		
Light Body Dispenser-Mix	50ml*2	Putty 25g*4 + Light Body 50ml*1 + Mixer*3 + Oral tips*3		
Set B	Putty 400g*2 + Light Body 50ml*1			
Heavy Body Dispenser-Mix	50ml*2			
Bite Registration	50ml*2			
Regular Body	50ml*2			
Heavy Body Auto-Mix	380ml*1			















# Operation procedures

## For PERFIT Putty & Light Body

Take the normal set as an example:

- STEP 01** **Choose a suitable tray**  
A rigid tray of sufficient size and wall height is recommended to offer stability and support for impression. 
- STEP 02**  
Clean and dry hands, disposable polythene gloves are recommended.  
- STEP 03** **Take the first impression**  
Base and catalyst 1:1 with corresponding measuring spoons  
Use the fingertip to mix the materials till the mixture color become even without streak, Mixing time 30s.  
Knead the putty into a stick and place in the tray, seat the tray slowly into correct position, total operation within 1min30s  
Bite and maintain passive pressure for 3min until material becomes solid.   
- STEP 04**  
Adjust the putty impression with silicone cut to make out the row spillway space. 
- STEP 05**  
Inject Light Body into putty impression and prepared tooth, the intraoral tip should remain submerged in material while syringing, total operation within 2min15s.  
- STEP 06**  
Take the second impression, intraoral setting time 3min 30s. 

### NOTES:

The setting time of additional polyvinyl siloxane silicone is affected greatly by temperature, so it will cure sooner if the temperature is higher.

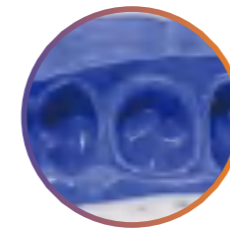
## For PERFIT Heavy Body



Insert the bio-cartridge into the mixer.



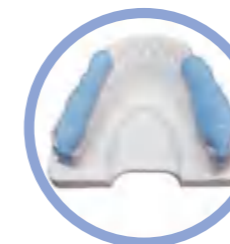
Inject Heavy Body onto the tray, and ensure the mixer is properly immersed in the material to avoid bubbles.



**Take the impression.**

Place the tray with Heavy Body into the patient's mouth slowly and accurately. When material is fully cured, remove the tray.

## For PERFIT Bite Registration



Inject the bite registration material onto the tooth.



Bite in patient's mouth until the material solidifies.



Trim the bite registration with a scalpel, to avoid bite-raising.



Wheelhead is also recommended to trim the bite registration.

# RESTORATION MATERIAL





# Glass Ionomer Cement

## Luting I

- Film thickness: 12-16µm.
- Ideal performance offers accurate matching.
- Compressive strength: >100MPa.
- Ideal particle size distribution.
- Makes it easy to mix and provides good operation experience.
- Low solubility and good edge sealing results.

Packaging	MINI Package
30g*1 Powder	10g*1 Powder
25g*1 Liquid	10g*1 Liquid
1 Measuring scoop	1 Measuring scoop
1 Mixing pad(50 sheets)	1 Mixing pad(50 sheets)



## Filling I

- Compressive strength: >150MPa.
- 3 shades available.
- Ideal particle size distribution.
- Makes it easy to mix and provides good operation experience.
- Low solubility and water absorption, good edge sealing result.
- Continuous fluoride releasing.
- High X-ray radiopacity.

Standard Package	MINI Package
15g*1 Powder	5g*1 Powder
12g*1 Liquid	5g*1 Liquid
1 Measuring scoop	1 Measuring scoop
1 Mixing pad(50 sheets)	1 Mixing pad(50 sheets)



## Luting II

### Functions as both cementation and filling material.

- Film thickness guarantees accurate matching.
- Ideal particle size distribution.
- Makes it easy to mix and provides good operation experience.
- Compressive strength:
  - > 100MPa (Used for cementation)
  - > 180MPa (Used for restoration)
- Low stickiness to appliance.
- 4 shades available.

Standard Package	MINI Package
30g*1 Powder	10g*1 Powder
25g*1 Liquid	10g*1 Liquid
1 Measuring scoop	1 Measuring scoop
1 Mixing pad(50 sheets)	1 Mixing pad(50 sheets)



Indication		Luting I	Filling I	Luting II
Inlay/Onlay/ Crown/Bridge	Ceramic/Glass Ceramic	●		●
	Oxide Ceramic	●		●
	Metal/Metal-Based	●		●
	Composite Resin			
Post/Screw	Metal	●		●
	Oxide Ceramic	●		●
Orthodontic Bands		●		●
Primary Teeth			●	●
Class III, V and Limited Class I Cavities			●	●
Base Lining			●	●
Core Build-Up			●	●
Atraumatic Restorative Treatment			●	●
Cavity of Unstressed Area			●	●

# Restoration material



**HugeBond Universal**  
Light Cure Dental Adhesive

### Indication

- Direct bonding under a light-cured composite or compomer fillings.
- Repair of dental restorations of ceramic, composites and metal alloys.
- Indirect dental restorations cementation with resin cement.
- Seal hypersensitive areas of teeth.

### Advantages

- Suitable for various substrates.
- Compatible with all etching techniques, with cement of light-cured, self-cured and dual cured.
- Strong bonding strength no lower than 20MPa.
- Low film thickness.
- Virtually no postoperative sensitivity.
- Low occurrence of microleakage prevents secondary caries.

**Packaging**  
5ml\*1 Bottle



**TopCEM**  
Dual Cure Resin Cement

### Indication

- Cementation of all sorts of dental restorations including crowns, bridges, inlays/onlays, veneers, dental posts and other restorations made from materials of metals/alloys, metal-ceramic, all-ceramic and/or porcelain, composites, and their combinations.

### Advantages

- Dual cure offers flexible options.
- Sufficient working time and fast setting time.
- High flexural strength.
- Low film thickness, solubility and water absorption.
- Over 400% radiopacity.

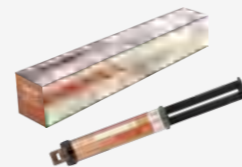
### Shade

- TR (Translucent), A0 (Light+), A1 (Light), A2 (Medium), A3 (Dark), White (White Opaque) and Opaque (Universal Opaque)

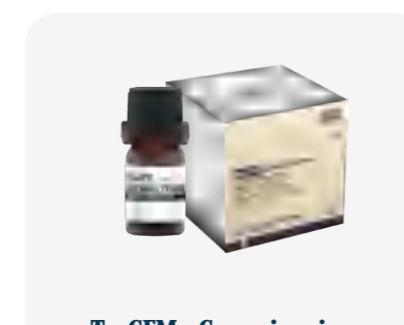
### Technical Parameter

Working time	> 60s at room temperature (23°C)
Setting time (including working time)	≤ 4.5 minutes intraorally (37°C)

**Packaging**  
8g\*1 Syringe  
(Optional: Mixing tips)



# Restoration material



**TopCEM - Ceramic primer**

**Packaging**  
5ml\*1 Bottle

## TopCEM Ceramic Primer

### Ceramic Coupling Agent

#### Indication

- Ceramic Coupling Agent serves as a priming agent and is used to create a durable adhesion between luting composite and glass/oxide ceramic, metal, composite and fiber-reinforced composite restorations.

#### Advantages

- Quick solvent evaporation minimizes waiting time.
- Suitable for various restoration interfaces.
- Simple operation, easy to apply, compatible with light curing or dual curing resin adhesive.
- Significantly improve the bonding strength between the resin cement and the restoration.

## P-Etchant

### Phosphoric Acid Etching Gel

#### Indication

- Used for etching of tooth enamel and/or dentin.
- Used for cleaning of restoration surfaces prior to repairing or cementation.

#### Advantages

- 37% concentration
- Good rheology, locate accurately.
- Bright colors to identify.
- Easy to be rinsed off.
- Eliminate surface dirt and make it rough for bonding.

## P-Etchant

### Hydrofluoric Acid Etching Gel

#### Indication

- Used for etching of various types of resin bonded porcelain/ceramic restorations prior to the bonding and cementation procedure.

#### Advantages

- 9% concentration.
- Good rheology, locate accurately.
- Bright colors to identify.
- Easy to be rinsed off.




**Etchant System**



# Restoration material

## Cements:



**TopCEM-RMGI**

Packaging  
8g\*1 Syringe  
(Optimal: Mixing tips)

### TopCEM-RMGI

#### Resin Modified Glass Ionomer Cement-Luting

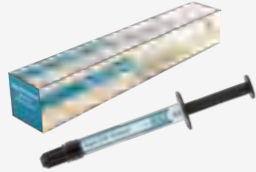
##### Indication

- Cementation of crowns and bridges, inlays and onlays.
- Orthodontic bands.
- Final cementation of PFMs, metal crowns, all-alumina or all-zirconia strengthened core ceramic restorations to implant abutments.

##### Advantages

- Triple curing mechanisms.
- Radiopaque.
- Sufficient bond strength to tooth structure.
- No need of etchant or adhesive.
- Excess cement can be easily removed.

Technical Parameter	
Mixing Ratio (base:catalyst)	1:1
Working Time (minimum)	1 minute 30 seconds
Intra-oral Setting Time (maximum, from initial mix)	4 minutes 30 seconds



**TopCEM-Veneer**

Packaging  
2.5g\*1 Syringe  
10 Dispensing tips

### TopCEM-Veneer

#### Light Cure Veneer Cement

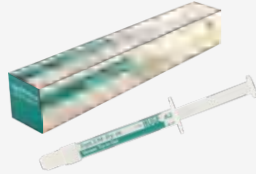
Used for permanent cementation of veneer made from materials of porcelain/ceramic and composites.

##### Advantages

- Seven shades/ three opacity levels for best esthetic results.
- Light-cure-only system provides excellent color stability.
- High bond strength, low water absorption and solubility guarantee good durability.

##### Shade

- A1, TR, White, A3, A0



**TopCEM-Try in**

Packaging  
2g\*1 Syringe  
10 Dispensing tips

### TopCEM-Try in

#### Veneer Try-in Gel

Used to evaluate the shade and the matching of the restoration prior to permanent cementation.

##### Advantages

- Try-in pastes offer excellent color match to final cured cement.

##### Shade

- TR, A2, White, Opaque

# Restoration material

## Composites:

### TrusFIL-Flow

#### Flowable Composite Restorative

##### Indication

- Restoration of minimally invasive cavity preparations (including small, non stress-bearing occlusal restorations).
- Base/liner under direct restorations.
- Repair of small defects in esthetic indirect restorations.
- Pit and fissure sealant.
- Undercut blockout.
- Repair of resin and acrylic temporary restorations.

##### Shade

- A1, A2, A3, B1, B2, C1, C2, OA2 (Opaque A2)

### TrusFIL

#### Universal Composite Restorative

##### Indication

- Direct and indirect restorations
- Core build-up
- Splinting

##### Advantages

- Exceptional flexural strength, low water absorption and solubility.
- Easy to sculpt, trim and polish, with excellent results.

##### Shade


- A1, A2, A3, A3.5, A4, B1, B2, B3, B4, C1, C2, C3, C4, D2, D3, D4, EA1, EB1, EC1, ET, (Translucent), OA2 (Opaque A2)



Composite System



## Prevention:



**Sculptor's Gel/Paste**

Packaging  
1.5ml\*1 Syringe  
10 Dispensing tips

### Proseal F

#### Enamel Coating Resin as pit & fissure sealant

##### Advantages

- Sustained release of fluoride ions can prevent the occurrence of secondary caries.
- It shows pink before curing, and opaque white after curing.
- High bond strength and flexural strength
- A large amount of fluorine, release for a long time
- Little pungent odor



# TopCEM Elite System

## Adhesive Resin Cement Solution



### Indication

TopCEM Elite System is designed for cementation of all sorts of dental restorations including crowns, bridges, inlays/onlays, veneers, dental posts and other restorations, which are made of metals/alloy, glass ceramic, oxide ceramic (zirconia), metal-ceramic, all-ceramic, composites, and their combinations.

### Packaging

5ml*1	HugeBond Universal Light Cure Dental Adhesive
8g*1	TopCEM Dual Cure Resin Cement
5ml*1	TopCEM Ceramic Primer Ceramic Coupling Agent
3ml*1	P-Etchant Phosphoric Acid Etching Gel
Accessories:	Helical mixers, Dispensing tips, Mixing pad, Micro brushes

### Preparation/ Pretreatment (restorations)

· Porcelain /Glass Ceramic Restorations



1 Apply a layer of 9% hydrofluoric acid etching gel (HF-Etchant) to the restoration surface. Wait for 60 seconds.

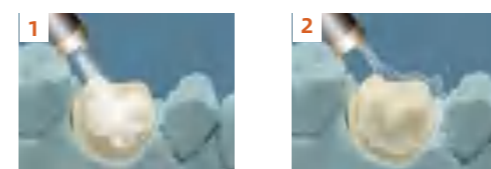
2 Rinse thoroughly with water for 10 seconds

3 Dry with oil-free air.

4 Apply TopCEM Ceramic Primer to the inner surface of the restoration, and wait for 60 seconds.

5 Dry the primed surface with oil-free air. \*DO NOT TOUCH THE SURFACE WITH YOUR HANDS.

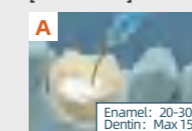
### Preparation/ Pretreatment (teeth)



1 Clean the tooth to be cemented, rinse with water.

2 Gently dry the tooth surface with oil-free air or cotton pellets. Isolate the teeth with rubber dam. Be careful not to over dry.

[OPTIONAL]



Apply P-Etchant to both enamel and dentin surface (Total etch) or to enamel surface only (Selective etch).



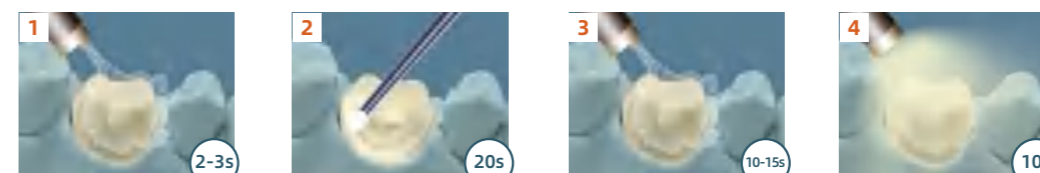
Rinse the tooth surface thoroughly with water for 10 seconds. With a stream of water (0.2 -0.4 MPa pressure) while using suction tube to dry the field simultaneously.



Gently dry the tooth surface with air.

### Cementation/Application (Apply adhesive to teeth)

Note: Do not light cure bonding agent on the indirect restoration.



1 Dry the tooth surface with oil-free air for 2-3 seconds. Be careful not to over dry.

2 Apply HugeBond Universal to the tooth surface evenly in two consecutive coats within 20 seconds to ensure a shiny surface.

3 Dry the tooth surface with oil-free air for 10-15 seconds to remove the solvent.

4 Light cure the tooth surface for 10 seconds.

### Cementation of restorations

· Bridges, inlays, onlays, veneers



1 Place the 1:1 mixed TopCEM onto the primed surface of the restoration.

2 Seat the restoration on the tooth in position.

3 Light cure the excess cement in the margin for 2 seconds, remove and clean.

4 Light cure each side of the restoration for 10s, or wait for 4.5 minutes.

5 Finish and polish, adjust the occlusal.

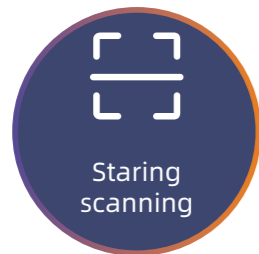
# ORAL SCANERS





# Realistic color scanning

to help show a more detailed 3D image of the teeth



Staring scanning



AI technology



True color powder-free

A powder-free intraoral scanning device can display the teeth details in a high-definition natural view based on video dynamic intraoral scanning.

Staring 3D light structure scanning technology, high-speed and anti-shaking performance

AI technology makes you enjoy the smart experience and smooth scanning.

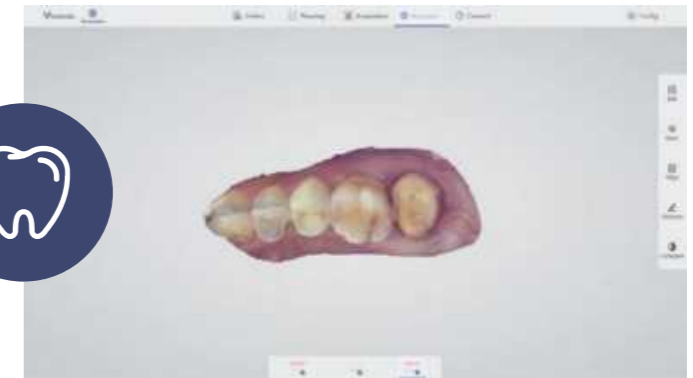
Intelligent tracking technology ensures fast recovery scanning of any oral position.

# Multiple scanning heads, Infinite options

Multi functionality, safe and reliable, universal data format

## RESTORATION

Accurate and clear shoulder edge guarantees more efficient design. True color scanning can effectively distinct the gums and tooth structure. Fast scanning results permit immediate restoration.



## ORTHODONTICS

The full dentition scan has high accuracy and restores the true shape of the dental arch. Immediate treatment plan, low time-cost.



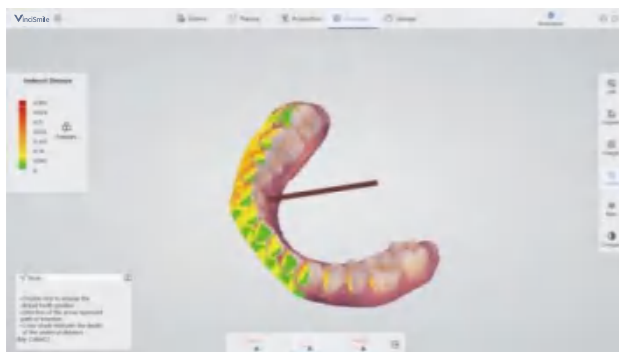
## IMPLANT

Fast scanning speed, accurate scanning metal positioning rod. Great scanning depth, available 3mm data under cuff. Improved experience, no repeated scanning.



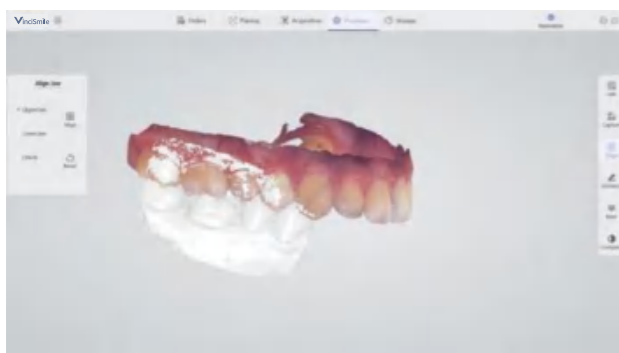


# Software Highlights



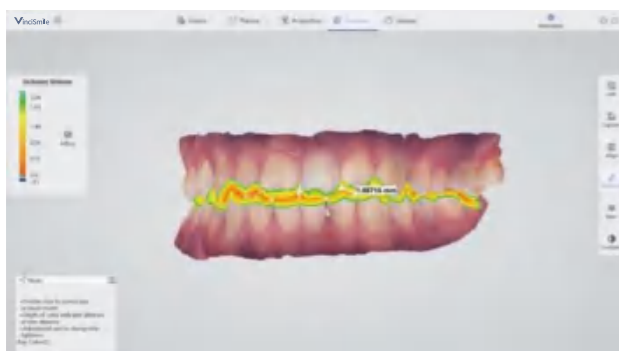
## UNDERCUT AREA ANALYSIS

It allows to check the undercut at different perspectives. The undercut area will be marked with gradient color.



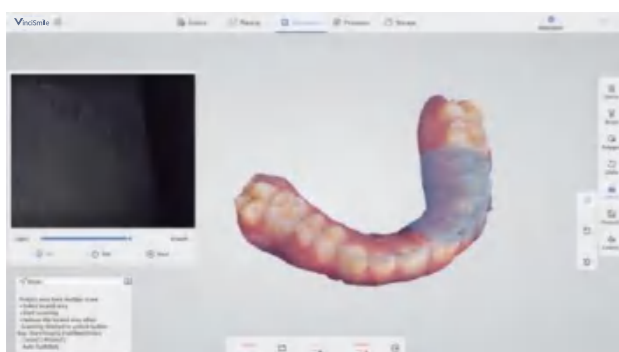
## ALIGN

Recalculate the current occlusion relationship.



## DISTANCE

It allows to calculate the occlusal distance and show the result, and to separate the upper and lower jaw to check the distance.

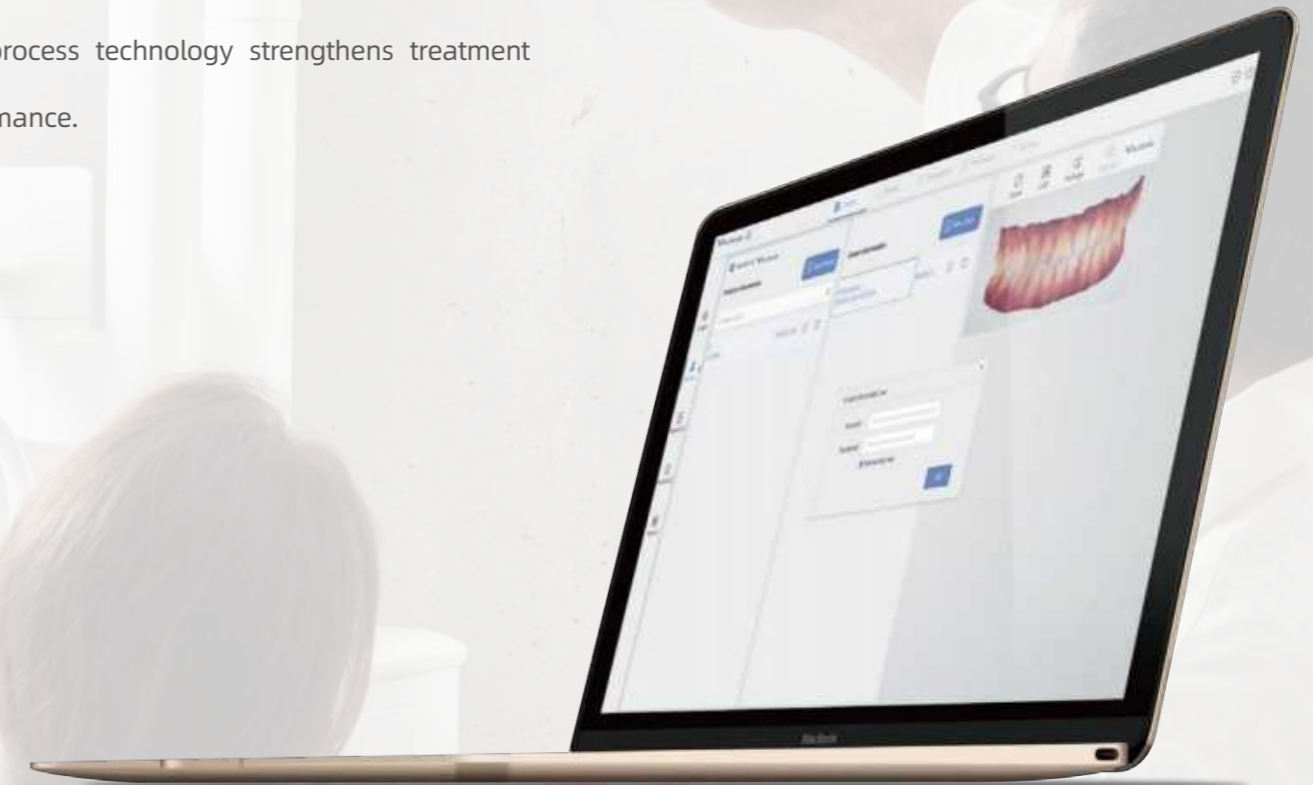


## LOCK AREA

It is used to protect the area that you do not want to change during the scanning process.

# Transmission in Coming Soon One-Click

Transmit your scanning data within the software, it's high-efficient and time-saving. The real-time data process technology strengthens treatment performance.



ANALYTICS



REAL-TIME



USER-FRIENDLY  
HMI



# Accurate, Precise, and Fast

Bring an unprecedented oral treatment experience

## HUGE SCANNER

### • SHORT TREATMENT PERIOD

Data can be obtained directly from the mouth, 3 minutes to take the model, and 1 hour to complete the denture restoration.

### • HIGH DATA ACCURACY

High accurate scanning data, and it is convenient for data storage and trace.

### • COMFORTABLE

Short mouth opening time, no abnormal sensation in the mouth, and available to be paused at any time.

### • INFORMATIVE

The visual digital model can help analyze and simulate intraoral changes in time, such as tooth wear, gingival recession, etc.

## TRADITIONAL IMPRESSION

### • LONG TREATMENT CYCLE

It takes 5-10 minutes for impression and usually takes 1-2 weeks to complete the dental restoration. The rework rate is high.

### • LOW DATA ACCURACY

Indirectly data access through multiple processes, e.g. impression, reversal, and scanning, which reduces the accuracy of data.


### • UNCOMFORTABLE






Long patient's mouth opening time impacts impression taking experience, and the abnormal sensation will lead to nausea and vomiting.

### • LESS INFORMATION

It is impossible to observe the dynamic changes based on the single static model data.

HUGE Scanner	Parameters
Scanning technology	Video scanning
Size (L*W*H)	216mmx40mmx36mm
Weight	246g
Tip	Multiple specifications, repeated usage
Specification (L*W*H)	83.4x19.6x14.6mm
Window Size	17x15mm
Scanning Depth	15mm
Data Format	STL, PLY, PTY
Interface	USB 3.0
Full Dentition Scanning Speed	< 5 min



-  AI technology improves intelligent scanning experience.
-  Clear cervical margin, vivid color and high precision.
-  A variety of scanning tips to meet various complex cases.
-  Fast scanning speed, easy to use.
-  Portable and micro device, easy to operate.
-  Powder free for true color scanning.

## Micro device, comprehensive vision, comfortable experience

Portable pen-type design

246g small and exquisite tip

14mm ultra-low entrance height

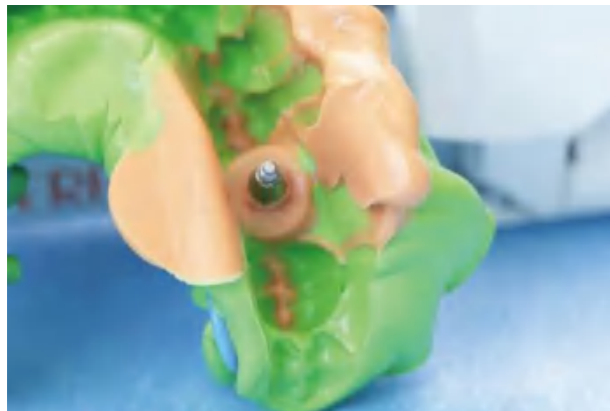
17mm excellent scanning depth



# HUGE provides scenario-based solutions

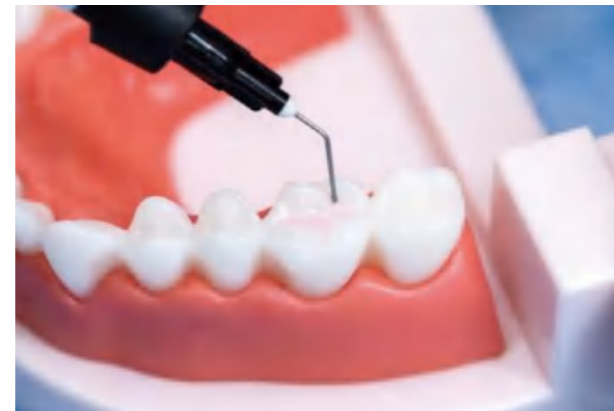
HUGE offers dentists a comprehensive portfolio of high-quality materials.

HUGE has been committed to clinical aesthetic restoration, providing more professional solutions.



**Implant Restoration Solutions**

HUGE focus on implant solutions. From initial impressions to temporary restorations and final restorations, HUGE will be your most reliable partner.



**Prevention and caries infiltration**

Effective prevention is a priority, especially in the field of dentistry. HUGE has been focusing on the prevention of caries, especially the early protection of children's teeth.

## We are there for you. HUGE

- All products that bear the HUGE name have been produced with the utmost care, rigorously controlled, and certified.
- Please believe in our ability and we will definitely provide you with better products.

You are welcome to contact us directly with any questions—

[www.hugedental.com](http://www.hugedental.com)

FDA Approved CE 1639 ISO 13485:2016



# HUGE promises professional training

As a partner of dentists, HUGE aims to support you in all aspects, including product solutions and practice-related professional training activities.

With a professional R&D and clinical team, HUGE has carried out a variety of themed activities for clinical applications.



## All Knowledge. All Free.

HUGE provides a variety of educational videos and live online courses, introducing HUGE's products and scientific background, and providing professional operation guidance.

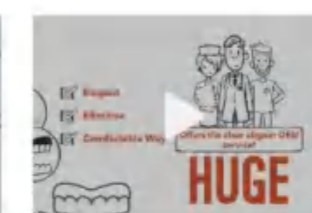
Contact us for more details if you want to know.



HUGE Regular Body(Transparent) Operation Guide 2



HUGE Regular Body(Transparent) Operation Guide 1



Huge Clear Aligner OEM Service



HUGE Bite Registration Silicone Operation Guide