

IDEAS
DENTALES 

ID LIGHT CURE
SYSTEM

NEW
EXPRESSION
FOR
SMILE MAKERS

IDEAS DENTALES

NEW EXPRESSION FOR SMILE MAKERS

IDEAS DENTALES was created in 2008 innovating dental ceramics and composite materials to provide new solutions to smile making professionals.

We focus on how to we can help doctors and technicians to make practice easier, safer and less invasive for future dentistry.

We have vision to expand our clients networks globally with following core values in our company.

- Innovation
- Honesty
- Respect
- Ethical Professionalism
- Solidarity
- Entrepreneurship
- Creating Values
- Disciplined for Action

With these values, We are ready to serve for smile makers.

Young Bin Kim
Director

ID LIGHT CURE SYSTEM

ID LC System is a system of light-curing polymers and composites, designed to provide an easy, fast and long-lasting solution to dental treatments. Due to its consistency, specially formulated with the latest technology, its **Putty & Flow** versions allow a wide variety of applications, including:

1. Prosthodontics
2. Rehabilitation of Implants
3. Fixed Prosthesis
4. Appliances in Orthodontics

ID LINE PRODUCTS

One of its most used indications is in the area of prosthodontics, with the **ID GUM Putty & Flow** composite for:

1. Partial Dentures
2. Complete dentures
3. Denture repair
4. Denture Conversion
5. Individual dental impressions

In fixed prosthetics, some of its applications are:

1. Long-term Provisional Crown
2. Veneers
3. Color test

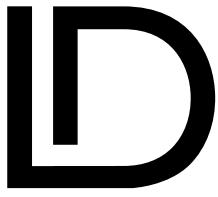
In orthodontics, it can be applied to manufacture:

1. Orthodontic appliances
2. Occlusal splints
3. Anterior Occlusion Jig

In implant prosthetics, the **ID LC System** can be used for:

1. Implant Verification Template
2. Immediate prosthesis
3. Removable Flipper
4. Denture Conversion
5. Surgical guides

Combining the digital workflow, the traditional flow of **ID LC System** has a wide variety of applications and colors to be used in various treatments; complement your workflow and obtain highly aesthetic results with the **ID LC System**.



LIGHT CURE

GUM | FLOW

PINK COMPOSITE FOR NEW GINGIVAL EXPRESSION

Features

ID GUM FLOW is a light curing composite resin that can be used easily and efficiently for temporary dentures and repairs that take a long time. Excellent mechanical strength and operability make it possible to produce fast and perfect without air bubbles.

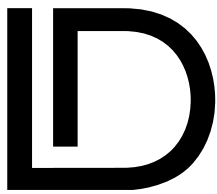
Applications

- Repair of defects such as pore and crack of prosthesis on dental plate.
- Temporary denture production.
- Attachment and modification of over denture.
- Extension of the gums site of prosthesis, etc.

Available colors

- | | |
|---|------------|
|  | Light Pink |
|  | Pink |
|  | Dark Pink |
|  | Peach |
|  | Red Orange |
|  | Ruby |
|  | Granate |





LIGHT CURE

GUM | PUTTY

PINK COMPOSITE FOR NEW GINGIVAL EXPRESSION

Features

ID GUM PUTTY is a light curing composite resin that can be used easily and efficiently for temporary dentures and repairs that take a long time. Excellent mechanical strength and operability make it possible to produce fast and perfect without air bubbles.

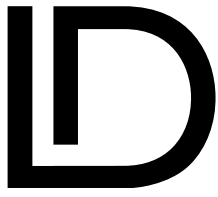
Applications

- Repair of defects such as pore and crack of prosthesis on dental plate.
- Temporary denture production.
- Attachment and modification of over denture.
- Extension of the gums site of prosthesis, etc.

Available colors

-  Light Pink
-  Pink
-  Dark Pink





LIGHT CURE **RELINE** | PUTTY

DUAL CURE DENTURE RELINER (INTRA & EXTRA ORAL)

Features

ID RELINE is a soft creamy putty type reliner product that maintains it's sharp by the first self curing and gives strength by secondary light curing and it does not have heat of polymerization during self curing, so it can be relined easily, quickly an precisely in the mouth.

Advantages

- Easy Relining the temporary denture
- Relining the implant temporary denture

Applications

- Work time (minutes)
- 00:00 - 01:30 Mixing and working time
- 02:22 - 05:00 Chemical polymerization
- 06:00 Removal from the model/mouth light curing





LIGHT CURE CROWN | PUTTY

NEW COMPOSITE FORMULA FOR C&B EXPRESSION

Features

ID CROWN PUTTY is a light curing composite resin in putty consistency for the precise and simple production of aesthetic temporary restorations, without air bubbles.

Advantages

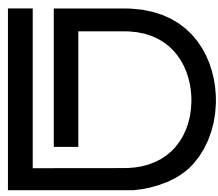
- Simple and fast to use
- Easy modeling
- Hand-working type putty
- It takes just 45 - 60 seconds to light-cure completely
- High stability of color and shape
- Easy polishing, with natural and bright appearance

Applications

Temporary crowns and bridges, onlay, inlay, repair and production of teeth, bite modification, lining of the interior of the temporary teeth, engagement and extension of temporary teeth, etc.

Available in shades A1, A2, A3, A3.5





LIGHT CURE CROWN | FLOW

NEW INJECTABLE RESIN COMPOSITE FOR ESTHETIC PROVISIONAL SMILE DESIGN

Features

ID CROWN FLOW is a light-curing, flowable or injectable resin composite for the precise and easy production of esthetic, monomer-free provisional esthetic restorations.

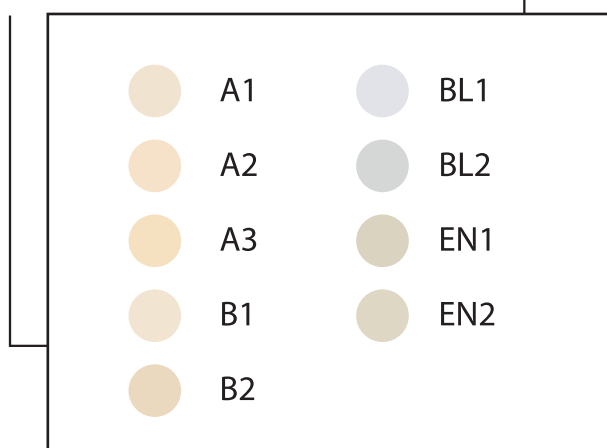
Advantages

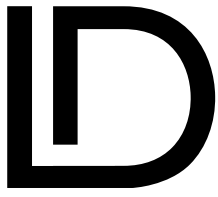
- Simple and fast to use.
- It takes only 20 - 40 seconds to fully cure.
- High resistance (approx. 105MPa.). Low risk of fracture.
- Easy modeling.
- High color and shape stability.
- Easy polishing, with a natural and shiny appearance.

Applications

Temporary Esthetic crowns and bridges.
Injectable Resin Crown & Bridge combined with Mock-Up Silicon mould for fabricating C&B.
Repair, staining, Build up & Bite modification for Acrylic teeth, Resin Based Restauration including 3D-Printed Resin Based Prosthetic.

Available colors





LIGHT CURE **PATTERN** | GEL **RED**

COMPOSITE PATTERN RESIN FOR IMPLANT

Features

ID PATTERN GEL IMPLANT is a light curing universal gel type composite resin used for making patterns. It has precise control and flow which is ideal for dentists and technicians to easily create patterns in desired shapes with fast curing times.

Advantages

- Easy Modeling & Control.
- High strength (about 105mPa.), Low risk of fracture.
- Minimum shrinkage, Perfect fit, Easy to separate.
- Fast curing time. (within about 5 seconds)
- Universal curing units. (300mm – 500mm)
- Easy to grind and contour.
- Odorless and harmless to human body.

Applications

- Implant jig
- Core build-up
- Attachment fixation
- Implant attachment
- Lingual and palatal bar
- Certain pre-soldering techniques





LIGHT CURE PATTERN | GEL BLUE & BEIGE COMPOSITE PATTERN RESIN FOR CASTING

Features

ID PATTERN GEL CASTING is a light curing universal gel type composite resin used for making patterns. It has precise control and flow which is ideal for dentists and technicians to easily create patterns in desired shapes with fast curing times.

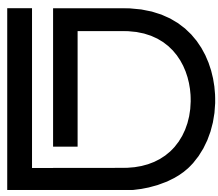
Advantages

- No residue left after burn out.
- Can be used with wax.
- Easy Modeling & Control.
- High strength (about 60mPa.), Low risk of fracture.
- Minimum shrinkage, Perfect fit, Easy to separate.
- Fast curing time. (within about 20 seconds)
- Universal curing units. (300mm – 500mm)
- Easy to grind and contour.
- Odorless and harmless to human body.

Applications

- Implant jig
- Crown & bridge joint connector
- Post and core build-up
- Attachment fixation
- Implant attachment
- Fabricating coping
- Lingual and palatal bar
- Adhesion bridge...etc.





LIGHT CURE

PATTERN | PUTTY RED

NEW EXPRESSION FOR LIGHT CURING COMPOSITE PATTERN RESIN

Features

ID PATTERN PUTTY IMPLANT is a light curing universal putty type composite resin used for making patterns. It has precise control which is ideal for dentists and technicians to easily create patterns in desired shapes with fast curing times.

Advantages

- Easy Modeling & Control.
- High strength (about 105mPa.), Low risk of fracture.
- Minimum shrinkage, Perfect fit, Easy to separate.
- Fast curing time. (within about 30 seconds)
- Universal curing units. (300mm – 500mm)
- Easy to grind and contour.
- Odorless and harmless to human body.

Applications

- Implant jig
- Core build-up
- Attachment fixation
- Implant attachment
- Lingual and palatal bar
- Certain pre-soldering techniques





TEMP | TRAY

FOR MOCK UP & BITE GUIDE

Features

ID TEMP TRAY is a thermoforming impression material. Excellent permeability and can light cure Resin Composites inside the solid-formed tray.

Applications

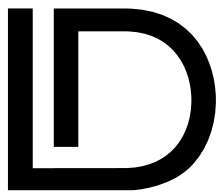
Dip an ID TEMP TRAY tablet in hot water for 10 seconds.

* Temperature: 60-80 ° C

Once it becomes completely transparent, take it out the water, and place it on the restoration you want to reproduce.

Allow it to harden for 30 to 60 seconds and remove the ID TEMP TRAY key carefully.





LIGHT CURE

TEMP | GLAZE

FOR AESTHETIC RESIN PROSTHESES

Features

ID TEMP GLAZE is photopolymerizable sealing varnish for aesthetic provisional crowns and bridges, and a prostheses. It has excellent flow characteristics, brings a high gloss surface and is resistant to abrasion after light curing.

Applications

Light curing sealing varnish for smooth and shiny surfaces. For temporary crown & bridges and complete and partial prostheses. Varnish with high liquidity. For glossy and aesthetically unpolished surfaces. Fast cured. Easy to use.



BOND

UNIVERSAL RESIN ADHESIVES

Features

ID BOND is a universal 5th generation adhesive (in two stages). It is 8.5% filled with a revolutionary patented filler, with an average particle size of 1 μm

OS / OS+ are designed to combine composite with dentin, enamel, model metals, treated porcelain and hardened amalgam.

Due to this unique formula and its consistency, this system is also designed for indirect techniques when used with a cementing medium, as well as in combination with amalgams.

OS / OS+ are truly universal adhesives, which have been designed to work with photopolymerizable self-curing and doubly polymerizable composite materials.





PASTE STAIN & GLAZE

Features

The aesthetic paste ceramic system of Natura Ceram™ gives technicians the ability to easily create aesthetic restorations with great similarity to natural teeth with ultra thin layer. Natura Ceram™ currently works well with monolithic zirconium, lithium disilicate crowns as well as conventional porcelain layered crowns, it is easy to integrate in any laboratory work flow.

Advantages

Easy and Simple way for monolithic crowns more aesthetic. Easy Color Correction; it allows you to change easily and quickly modify value & chrome. Paste Ceramic, Alternative to powder ceramic; an efficient way of creating highly characterized restorations that rivalize with aesthetics that normally can only be seen in Porcelain layered Crowns. Clear & High shine Glaze with Fluorescence.

Natura Ceram™ offers a range of 11 colors and a crystal clear glaze to help imitate the natural incisal translucency, the mamelons, pits, incisures and shiny surfaces.



Colores



*Colors may have slight variations.

Pasta stain & glaze - Temperaturas desde 760° - 850°C

Materiales	Tiempo inicial (°C)	Tiempo de secado (min)	Tiempo de calentamiento (°C/min)	Temperatura máxima °C	Retención (min)
Zirconia (monolítica)	500	05:00	50	850	01:00
Disilicato de litio (monolítico)	500	05:00	50	820	01:00
Porcelana fundida sobre metal	500	05:00	50	850	01:00
Porcelana E-max	500	05:00	50	760	01:00

NANO SCAN GEL

3D SCAN COATING APPLICATION

Features

NANO SCAN GEL is a brush-on type 3D scan coating application. It can get very precise scan results, easy to apply and remove, improving work environment and eliminating harmful effects on user's health.

Advantages

EASY TO APPLY & REMOVE

Convenient to apply on all materials such as Metal, Gum, Wax, PMMA, Zirconia, Plaster.
Easy to remove with steam or water wipes.

PRECISE SCAN

(Less than 5 micron thickness), 2-3 times thinner than scan sprays.

COST-BENEFIT

More than 500 cases can be applied based on single abutment

NO MORE HARMFUL MICROSCOPIC DUST

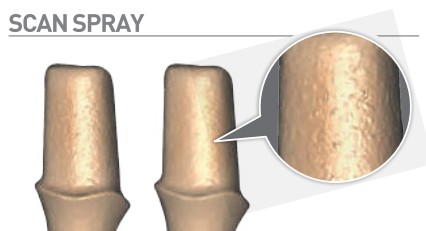
Less fumes which is better for your health.

BIO-INERT NANO MATERIAL

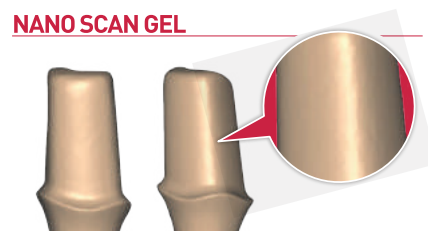
Titanium Oxide Base is safe to use by technicians.



SCAN SPRAY



NANO SCAN GEL



ID 3DPRINT

Coming soon

ID 3D PRINT is the Light-Curing Resin for SLA, DLP & LCD Types of 3D Printers. **ID 3D PRINT** will offer variety of Materials for Use in Dental Digital Workflow. **ID 3D Print Resin** will allow shorter printing time and ideal Texture for reliable work flow.

- **ID MODEL3D** - Ideal Resin for Precise Model & Model Texture. 2 colors (White & Beige).
- **ID CASTING 3D** - 100% Castable Resin for Removables or Crowns.
- **ID TEMP 3D** - Teeth Color Resin for Provisional Crown or Dentures.
- **ID GUIDE 3D** - Transparent Resin for Surgical Guides & Orthodontic Guides.



BETTER & SAFER
ENVIRONMENT
FOR DENTAL
PROFESSIONALS

IDEAS DENTALES 
NEW EXPRESSION FOR SMILE MAKERS

ID KOREA CO., LTD.

F409, 150, Donggyecheon-ro, Dong-gu, Gwangju, 61436, Korea.

T. +82-70-4779-3000 | F. +82-504-364-0007

E. idkorea@ideasdentales.com | ideasdentales@ideasdentales.com

www.id-dentistry.com