

Digital Pain free Automatic Syringe

# i-JECT





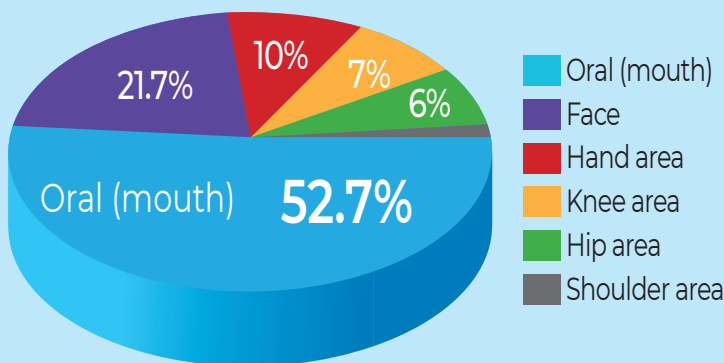
▲Video for using i-JECT



# Digital painless anesthetic syringe i-JECT for local anesthesia based on pain relief algorithm

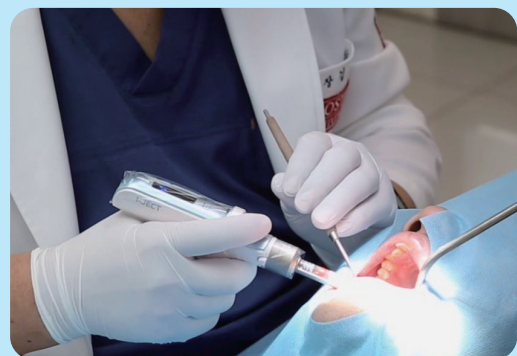
What was the most painful part of the anesthesia procedure?

52.7% of patients in the hospital reported the most severe was dental anesthesia.



- Subject of survey : Consumer Survey on Hospital Anesthesia Injections
- Investigating Organization: Open survey panel
- Survey period : 2020. 03. 20 ~ 03. 20
- Respondents: total 300

i-JECT was initiated through joint research and development with medical device R & BD platform at Seoul National University Dental Hospital, of which ergonomic design and the state-of-the-art patented technologies will help you with anesthesia procedures.



'i-JECT' Example of clinical use



# Digital automatic anesthesia syringe for doctors and patients

# i-JECT



FDA Registered

Injection start / speed adjustment  
(P ~ 3 step speed)

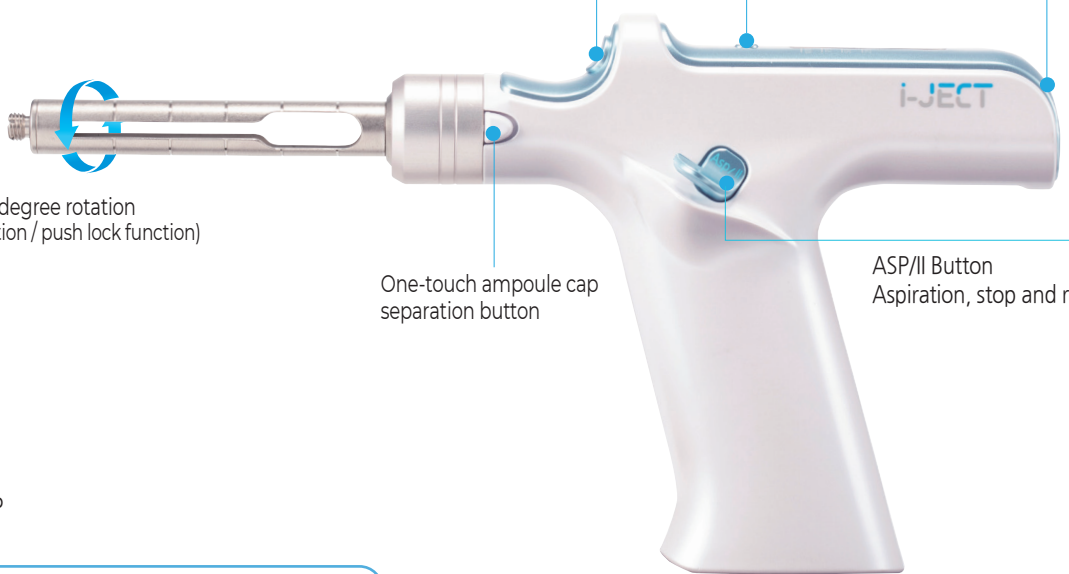
Volume adjustment button (Q'ty)  
(25, 50, 75, 100%)

Power button

Ampule cap 360 degree rotation  
(bidirectional rotation / push lock function)

One-touch ampoule cap separation button

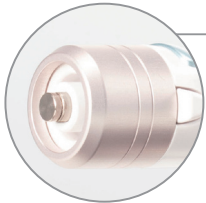
ASP/II Button  
Aspiration, stop and reset



▲Install i-JECT App

World's First

## Aspiration function



Performing an aspiration function to prevent the injection of a needle into the vessel during anesthesia transfer (When the ASP button is operated, the drug flows back and blood in flow can be checked.)

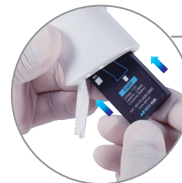
Sterilizable metal ampoule cap (Stainless steel) is provided as standard to reduce the cost of consumables



**Metal ampoule cap provided**

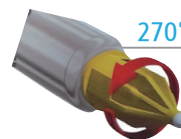
(2EA : Sterilizable)

**Plastic ampoule cap**  
(Disposable / Option)



**Convenient battery removal**

(2 batteries included)



**i-JECT dedicated needle**

- 4 times faster clamping speed with single-turn
- Reduce the risk of infection from needle puncture



**Use hygienic vinyl cover**

Prevent contamination  
(1Box : 300EA)

## 'i-JECT' assembled with Pen type adapter



Pen on the cradle

Pen Grip

## 85% Similar grip with manual syringe



Picture of i-JECT grip

Manual syringe grip

# 'i-JECT' can be used in other medical area

Dentistry 	Plastic Surgery 	internal medicine department 
Hair Transplantation Proctological Surgery 	Center of Vascular Diseases 	Ophthalmology 
Otolaryngology 	Urology 	E.R. & Others 

Care for the patient begins with an unpainful anesthetic injection.

i-JECT is more effective for these patients.

- Patients in fear of anesthesia
- Patients with hypertension / inflammation
- First dental Visit

Relieves fear of anesthetic injection

Fast anesthesia effect

Safe Quantitative Anesthesia Effect

Psychological Placebo Effect in Patients

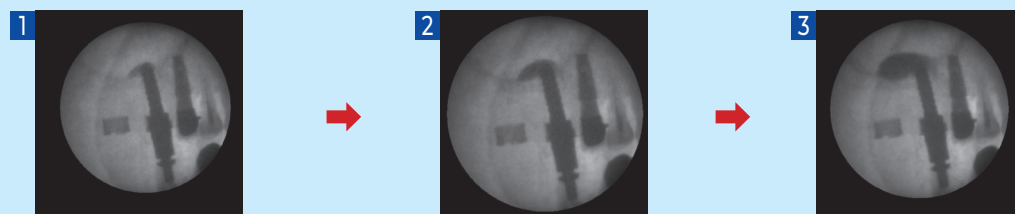
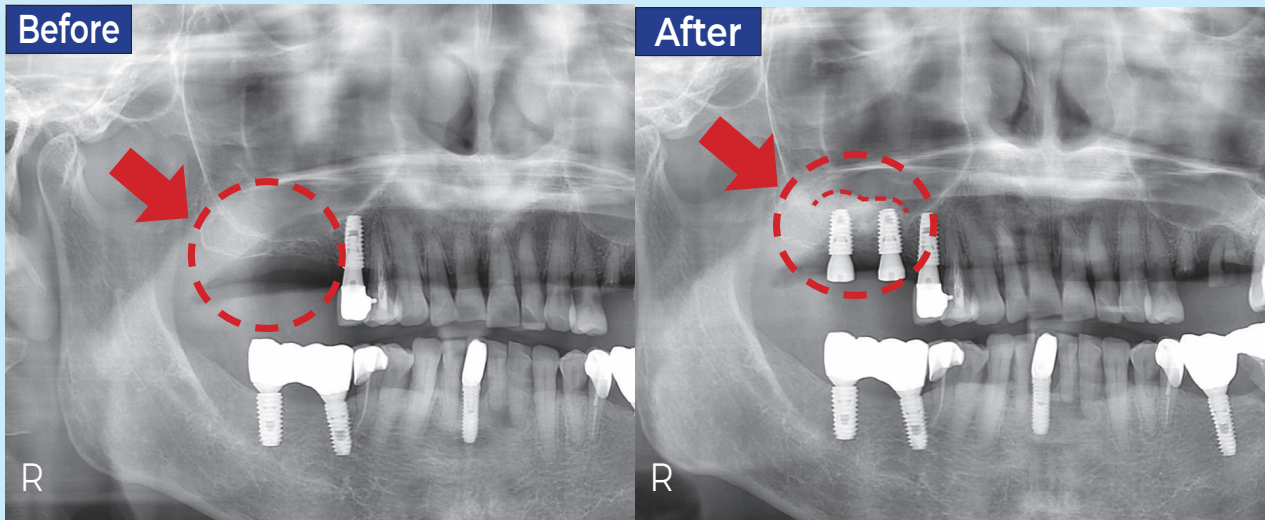
Increasing Treatment Satisfaction

## DSA(Digital Sinus Approach)

**Safety** : Precise and constant speed saline injection safely perform hydraulic lift without damage to maxillary sinus membrane

**Convenience** : Button press saline injection is easier than manual lift and separation using several hand instruments.

### DSA clinical treatment using i-JECT (Digital Sinus Approach)



▲DSA kit Surgical procedure  
Sinus Lift starts in 10 seconds  
(i-JECT injection speed: 2 stage)

▲40 seconds later

▲50 seconds later  
Perfect maxillary sinus hydraulic  
lift with DSA kit

▲DSA kit Usage Protocol

▲Total Injection Time  
About 90 seconds.

### DSA kit Usage Protocol(Non surgical guide type)

Stage 1	Using Crestal Approach Kit to access 1mm short from the floor of sinus.
Stage 2	Open the sinus floor with 50rpm water tap (DSA Kit)
Stage 3	Connect silicone tube to Water tap. Make sure that the silicone tube is filled with saline solution before the connection.
Stage 4	Press the Start Button and inject saline solution at 2 Speed Stage.
Stage 5	Approximately 3ml of saline injection completes maxillary membrane lift (about 90 seconds)

#### ● DSA kit Components



▲Clinical  
Procedure Video

Digital Pain free Automatic Syringe

# i-JECT



▲Product descriptions i-JECT



**Inquiry** ☎ + 82 70 4250 3990

**Head** (15808) #108, 201 SA Tower, 175. LS-ro, Gunpo-si

**Office** Gyeonggi-do, Republic of Korea

**T.** + 82-70-7711-2007 / **F.** + 82 505 365 6126

**Email :** medihub@medihub.co.kr

**Website :** www.medihub.co.kr  
www.iject.kr

### Pain Control Package

**New** i-JECT ON

