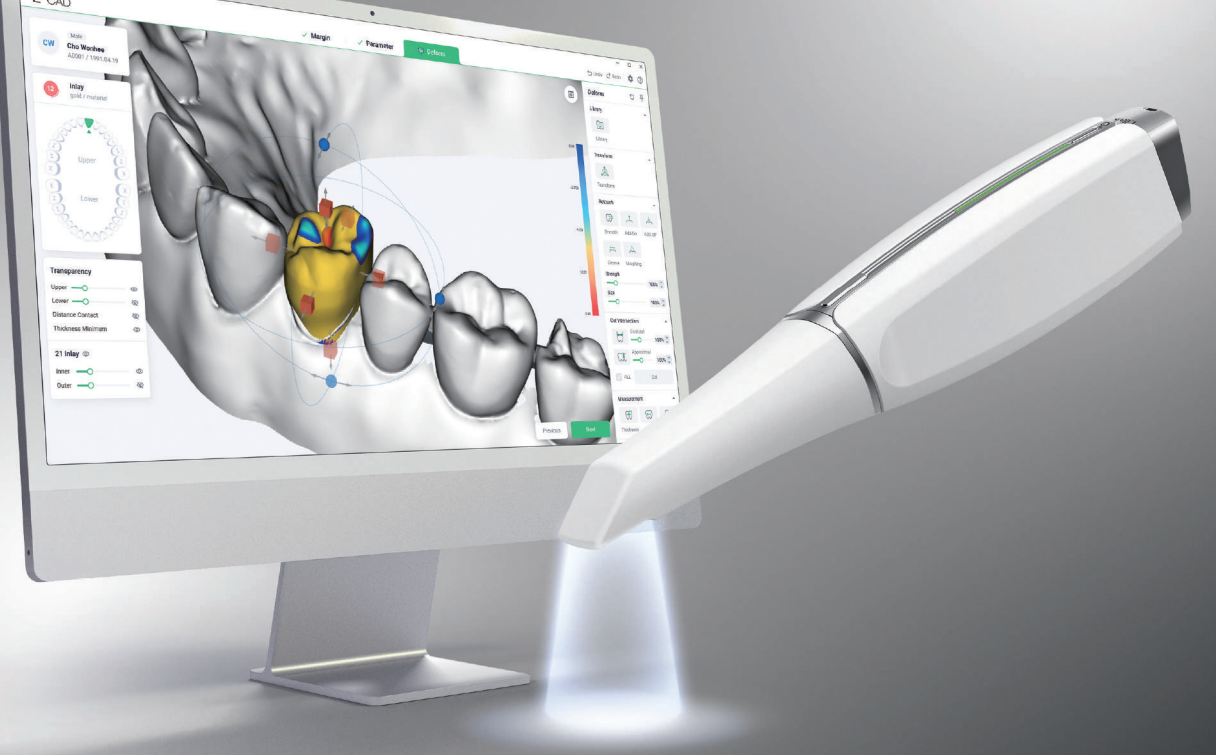


# Lilivis SCAN

Ultimate Collection  
for your Digital Dentistry

More Accurate, faster still Light

Lilivis SCAN is an intraoral scanner developed with superior technology that has been proven over 20 years in the field of optical technology. Get the start of 'Digital Dentistry' lighter, faster and more precise with Lilivis SCAN.



## Lighter, Wider, Deeper – Lilivis SCAN

Lilivis SCAN provides a comfortable feeling of use with light weight, enables fast and accurate digital impression taking with a wider and deeper scanning area. It provides the best treatment experience for both patients and clinicians.



### Lighter

The light weight of 230g and the ergonomic design provide a comfortable grip.



### Wider

The wide FOV (15 x 18 mm) allows you to scan a wider area in one movement, making it faster and easier to complete impressions.



### Deeper

Designed with a deeper depth of field of up to 22 mm, it offers more accurate and comfortable scanning experience at difficult-to-scan areas such as interproximal, undercut, and deep cavity.

### Specifications

Model	LS-100	
Handpiece	Weight	230g
	Size	250 x 41 x 52 mm
Scanning	FOV	Up to 15 x 18 mm
	DOF	Up to 22 mm
Imaging	HD Video	3D in motion video
	Real Color	3D Full color streaming
TIP	Size	20.2 x 18.3 mm
	Sterilization	Autoclavable (100 times per tip)
Connectivity	Cable Length	2.0 m
	Connection Type	USB 3.1
Out Format	STL/OBJ/PLY	

\* Specifications and designs are subject to change without notice.

Ultimate Collection for Chairside Digital Dentistry ; Lilivis



**Ossvis**

38, Burim-ro 170beon-gil, Dongan-gu, Anyang-si,  
Gyeonggi-do, Republic of Korea  
TEL. 031-360-0082, E-mail : info@ossvis.com

