



ALL SOLUTIONS FOR A  
PERFECT SMILE

# ABOUT US

Since its founding in 2015, GDT Implants has provided dentists all over the world with the leading solutions in the dental implants industry and allowed thousands of patients to regain their smiles.

With the best manufacturing practices in the dental implants market, relying on systematic quality control, and abiding by the strictest standards, we help dentists to perform complex procedures with unprecedented ease – and to provide their patients with optimal conditions for successful dental procedures.

All of our products are manufactured under ISO 13485:2003 and ISO 9001:2008 standards – and are CE marked and FDA approved.

It is our commitment to uncompromising quality that drives our success – while pushing us forward and powering our constant strive for innovation.



Thanks to the superiority of our manufacturing processes, we at GDT Implants have assembled a strong network of business relationships around the world – that helped us build our reputation as a trusted and reliable brand. By focusing our efforts on the quality, reliability, and innovative manufacturing of our dental products, we are able to provide our clients and resellers with solutions that excel in all aspects.

Our confidence in our products empowers us to provide a **life-time warranty** for all our implants.



**LIFETIME  
WARRANTY**

## **Product guarantee**

**GDT Implant** takes responsibility for all of its implants and gives life-time warranty when used in accordance with the supplied instructions for use and the company protocols.

We take pride in our products and put in all the effort, time, and resources needed to ensure their quality. As part of this constant effort for perfection, we utilize cutting-edge technologies and equipment that allow us to create a more useful and accurate implant that will improve the quality of life for thousands of patients around the world.

# QUALITY ASSURANCE



Each product is created with special care and attention.

GDT Implants conducts continuous and systematic quality control of all products which is confirmed by international quality standards.

We use the most advanced high-tech state-of-the-art equipment during production with the end goal of creating a fitting and useful product for our customers and patients.

GDT Implants quality assurance and regulatory systems comply with international quality standards, complying with EN: ISO 13485:2003 and ISO 9001:2008, CE marked and FDA approved.



GDT Implants are packaged in our ISO Class 7 Clean Room



# MATERIAL



GDT Implants are made of Titanium alloy grade 5 (Ti 6Al 4V ELI), material that combines properties such as low specific weight, high strength to weight ratio, very high corrosion resistance, and excellent general biocompatibility.

Ti6Al4V ELI is very similar to Ti6Al4V, except that Ti6Al4V ELI contains reduced levels of oxygen, nitrogen, carbon, and iron.

ELI is short for “Extra Low Interstitials”, and these lower interstitials provide improved ductility and better fracture toughness for the material.

Titanium alloy grade 5 (Ti6Al4V ELI) has proven to be highly successful in the fabrication of dental implants.

MATERIAL	TITANIUM Ti6Al4V ELI GRADE 5	
Density	G/CM <sup>3</sup>	4.42
Melting Range	°C ± °C	1649
Co-Efficient of Thermal Expansion	0-100 °C	8.6 X 10 <sup>-6</sup>
Tensile Strength	MPA	1000
0.2% Proof Stress	MPA	910
Elastic Modulus	GPA	114
Hardness	ROCKWELL C	36

# SLA SURFACE

## SANDBLAST, LARGE GRIT, ACID-ETCH

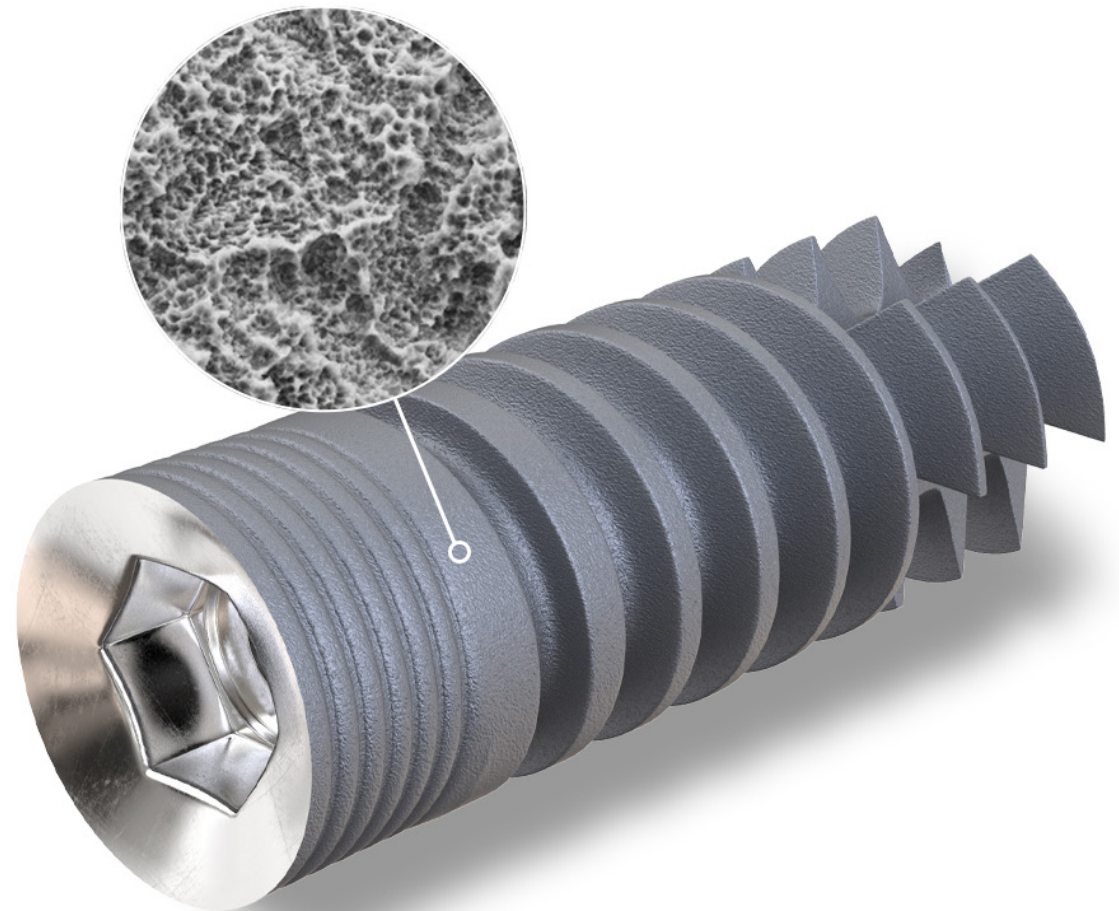
SLA is a type of surface treatment that creates surface roughness intending to enhance osseointegration through greater bone-to-implant contact (BIC).

SLA surface treatment technology is based on a large-grit sandblasting technique that generates a macro-roughness on the titanium surface, This technique is followed by acid-etching that superposes a micro-roughness, This topography offers an excellent structure for cell attachment.

SLA surface treatment increases the rate at which osseointegration occurs by using a combination of grit and acid etching to give the surface increased roughness on multiple levels.

This allows osteoblasts to proliferate and adhere to the implant surface.

Through osseointegration, SLA helps provide increased stability to the implant which will ultimately lengthen its longevity



# RBM SURFACE

## RESORBABLE BLAST MEDIA



RBM surface is rough and hydrophilic.

This surface treatment is designed to roughen the implant surface without leaving the residual embedded blast particles or debris in the treated substrate.

To gain the desired roughening the implant is blasted with suitable hardened particles of hydroxyapatite (beta-tricalcium phosphate, alpha TcP, TTcP, and calcium phosphate (CCP) and then subsequently dissolved from the surface with a defined passivation treatment.

Surface roughness between Ra 1.2-1.5 is consistently achieved.

The result is a rougher implant surface than traditional acid etches treatment providing a greater surface area for osseointegration, improved retention characteristics, increased biological fixation, and maximizing bone-to-implant contact.

# SUPPLY CHAIN

## OUR FACTORY IN ISRAEL

Our team is working with the production department to maintain the optimum service levels

According to our production method, each product is created with special care and attention, and every process is continuously inspected

All products are stored in GDT-Implants warehouse.

Our same-day-dispatch delivery system enables timely deliveries



Our logistics solution allows a flawless tracking of all the products, from the first moment our team dispatches your order.

We offer express shipping - your order can reach your clinic in 1-3 business days





# OPERATION FIELD

---

## Dental Implants

Dental Surgeon's requirements and patient's wellbeing are in the focus of our team when developing our non-compromising Implant Systems.

## BioMaterials

GDT-Implants offers membranes, sponges and bone graft solutions for bone and tissue regeneration



## Prosthetics

GDT-Implant's unwavering insistence on high precision and quality guarantees that doctors, dental technicians, and patients alike acquired full confidence in the entire prosthetic product line.

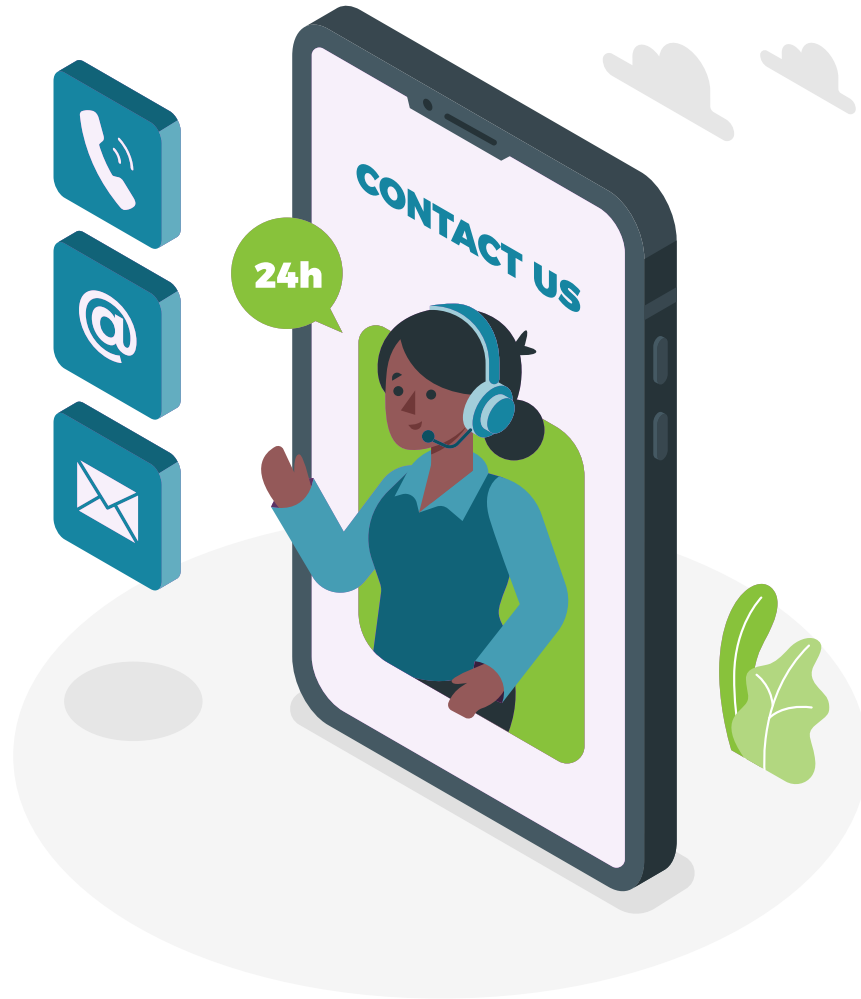
## Instruments

GDT-Implants Tools and instruments were designed for simplicity of use, maintaining the dental practitioner's needs.

**WE OFFER OEM SERVICES**

# CONTACT US

---



## Address

M Tower, Recha Freier 9  
8489414, Beer Sheva, Israel

## Phone

+972547790282

## Email

info@gdentalt.com

## Website

www.gdentalt.com