

*Beyond  
possibilities  
with  
BioMiniatures*

---



BioMiniatures

# Minimally invasive insertion with self-cutting and self-advancing design

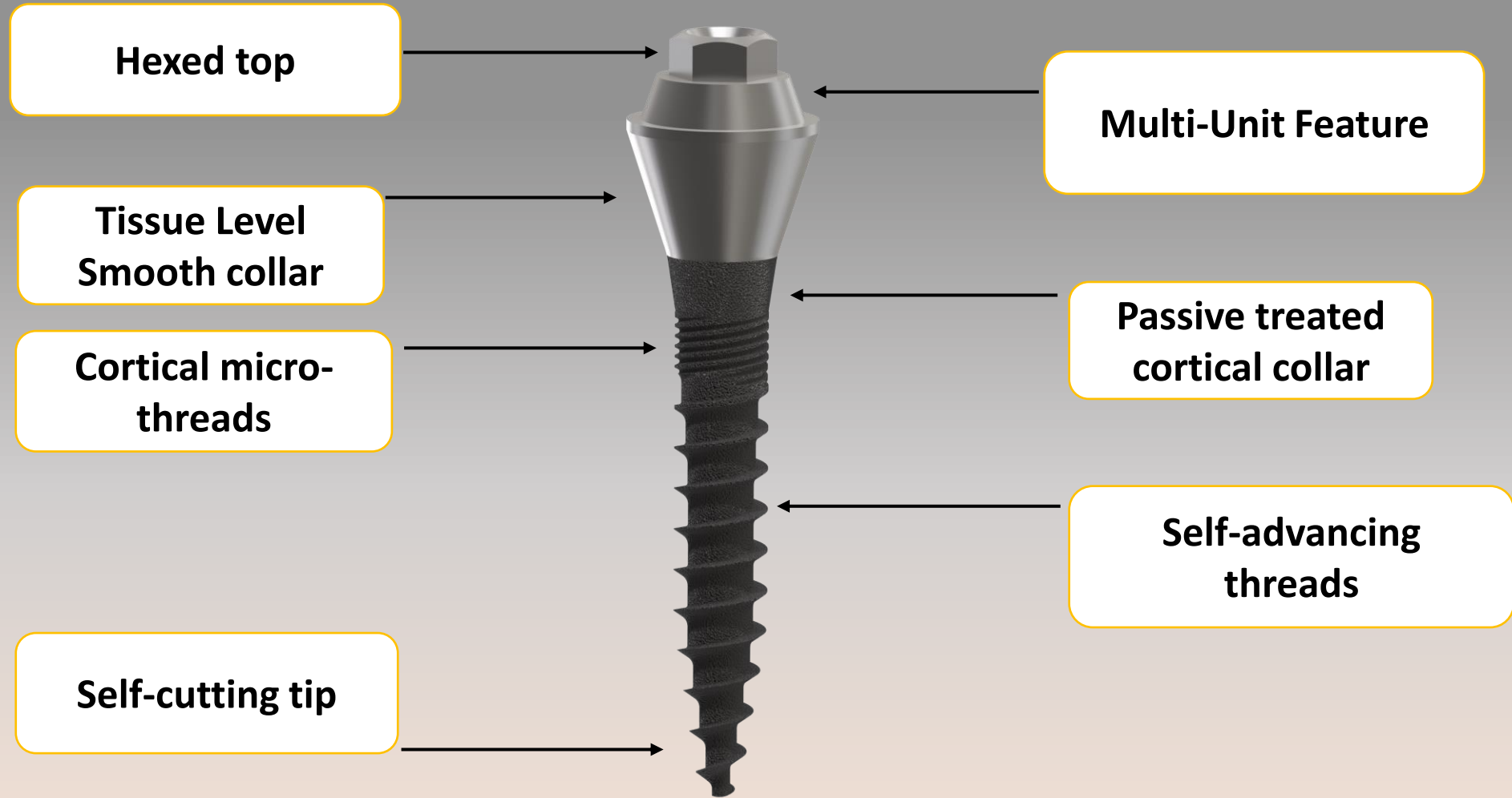
BioMiniatures

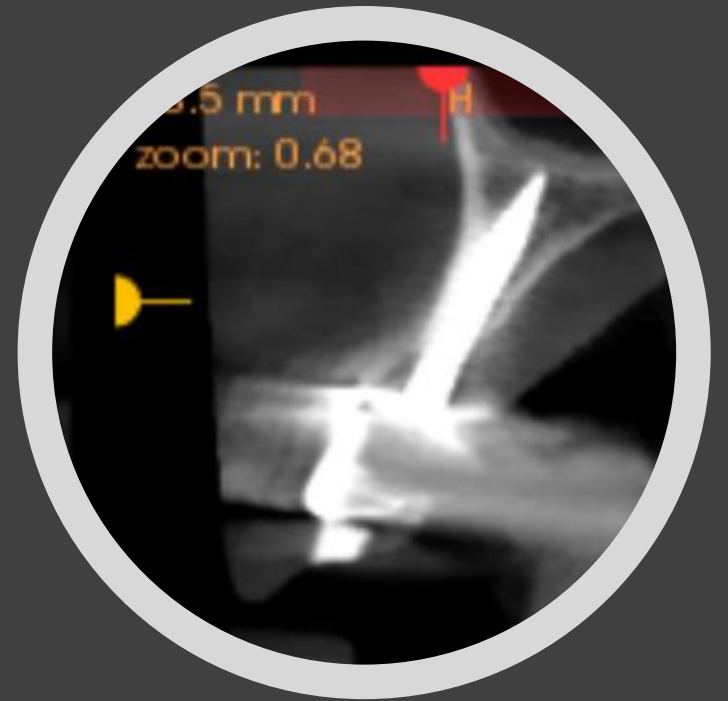
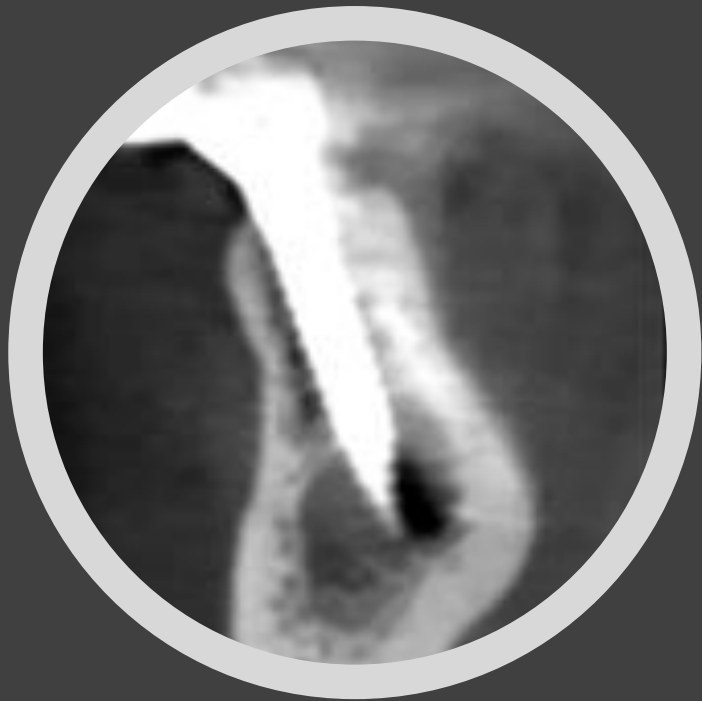
## Leader in **Miniature Implant system**

Miniature implant system offers the minimally invasive surgical benefits of the mini dental implants plus the preferred restorative options of standard implants combined.

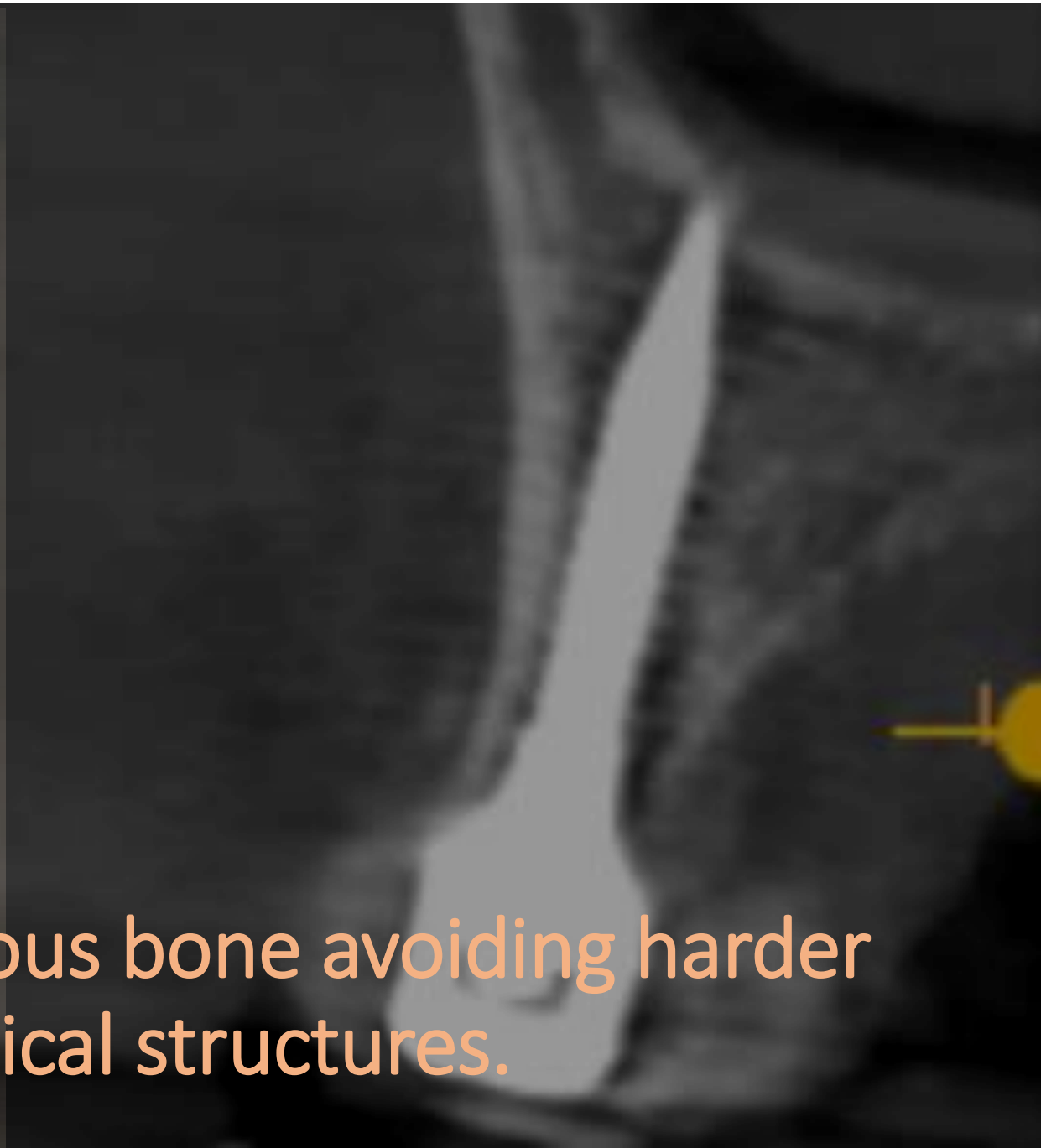
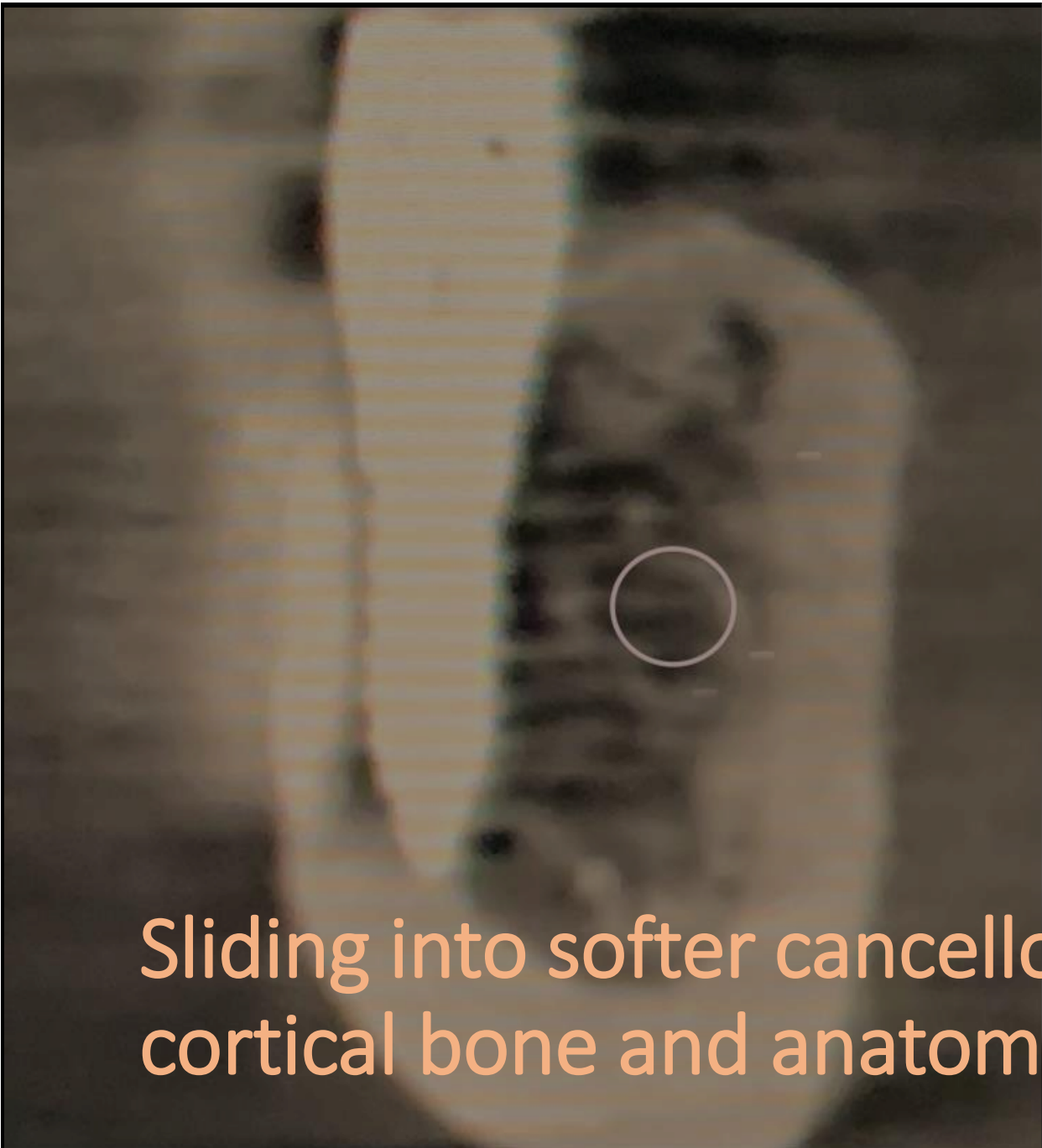


# Design characteristics





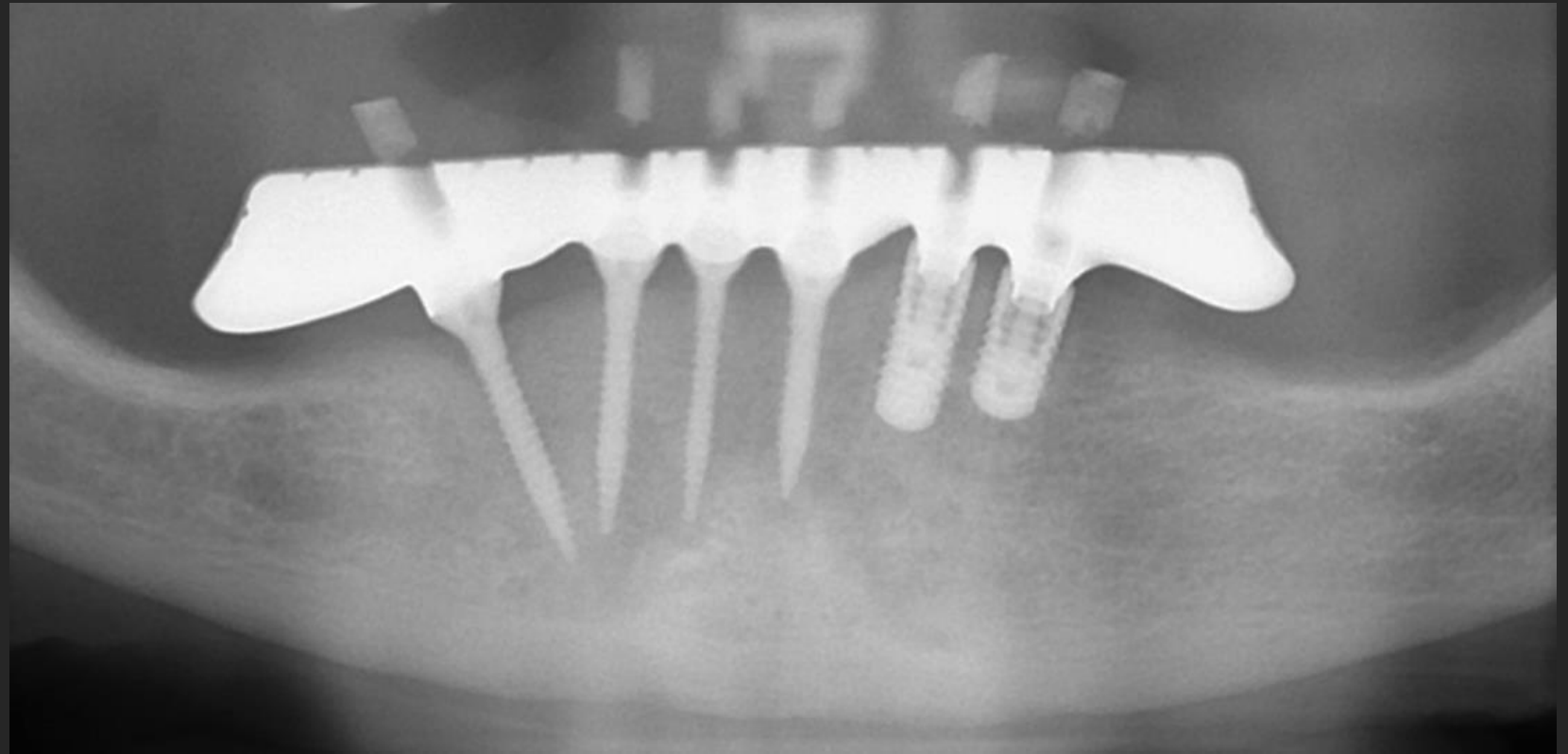
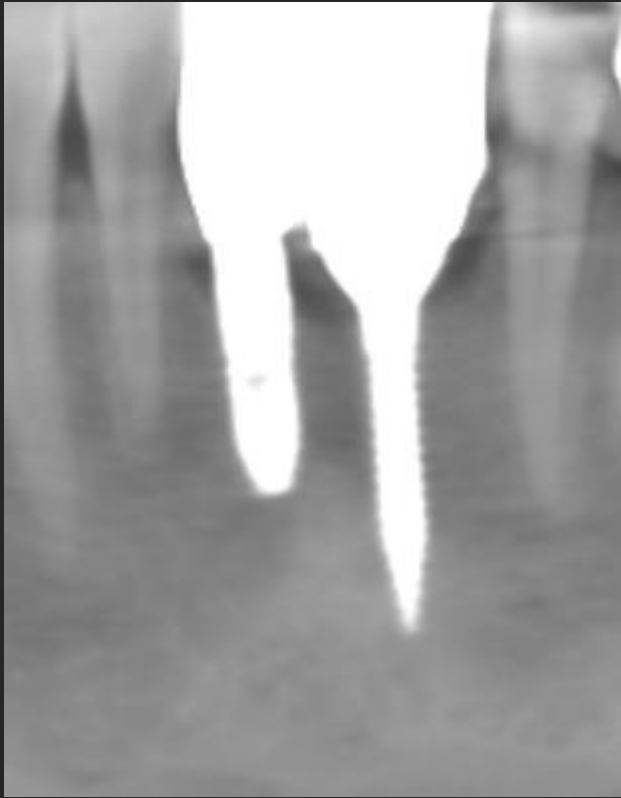
Fitting into very thin bone ridges



Sliding into softer cancellous bone avoiding harder cortical bone and anatomical structures.



Miniature implants can be restored in combination with other implant systems



Stable crestal bone in long term  
compared to other implant systems



# *Indications*

Full Arch Restoration

Partial Arch Restorations

Splinted multiple teeth missing replacement

Selective single implants for incisor teeth



# Full Arch Rehabilitation

---




# Partial edentulous restoration

---





The image is a composite of two photographs. The left side shows a close-up of several dental implants with a textured, tapered design, arranged in a row. The right side shows a clinical view of a patient's mouth with two dental implants installed in the upper jaw, positioned between two natural teeth. The implants are metallic and have a circular opening at the top. The surrounding gum tissue is pink and appears healthy. The text 'Replacing premolars with splinted implants' is overlaid in orange on the left side of the image.

Replacing premolars with  
splinted implants



## *Miniature Implants offer:*

- A unique solution for minimally invasive approach in implant dentistry.
- Reduced patient's morbidity
- Reducing need for bone augmentation
- Flexibility in restorative options
- Reduced long term complications such as bone loss and peri-implantitis
- Affordability



BioMiniatures

*Predictable  
outcomes  
with  
BioMiniatures*