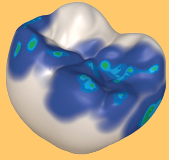




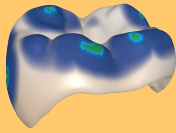
# Clinux

## CAD in the Cloud

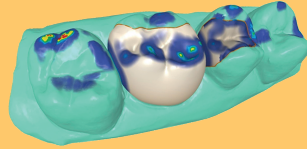
Cloud-based Dentist CAD Software  
developed by Clinical Experts



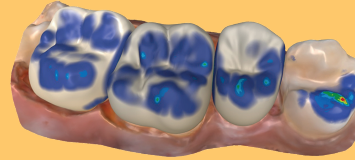
Crowns



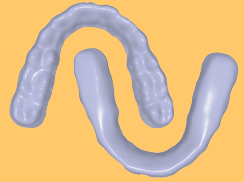
Crownlays



Inlays & Onlays



Multiple Unit Design



Anatomical and  
Flatplane Night Guards

## Fast-track Your Way to Chairside Production

### Intuitive Interface

Our helpful CAD Assistant guides you every step of the way.

### Rapid Workflow

Import your scans from any IOS and create restorations in minutes.



## Flexible and Fair Pricing

### Leave When You Want

Our pricing model is easy to understand, easy to join and easy to leave.

### Updates Included

As long as you're subscribed, improvements to our software come automatically.

## Serve Your Patients Better & Faster

### Single Visit Dentistry

Restorations and night guards/splints in one visit leads to higher case acceptance and patient satisfaction.

### In-Office Production

Take control of the process and grow your skills.



**Clinux**  
by CAD-Ray  
Am Grundweg 65  
64342 Seeheim-Jugenheim  
Germany

**Contact:**  
info-europe@cad-ray.com  
**Milos Gedosev:**  
✉ milos@cad-ray.com  
☎ +49-162-5880885

<https://www.clinux.pro>



# Clinux

# 99€/month

Or less! Monthly, Annual and 5-Year subscriptions available. Find a plan that's right for you.

**Book a Clinux demo and see how it can benefit you!**



### Cloud Based

No installation required.  
Access anytime, anywhere.  
Compatible with all OS.



### A Truly Open System

Optimized for MEDIT scanners, but compatible with all IOS.  
Accepts STL, OBJ and PLY file types.



### Unrivaled Support

Access to video tutorials.  
Access to Clinux Facebook User Group plus Phone, Email and WhatsApp support.



## Why We Made Clinux

You have an IOS, so now what?

CAD software is the essential piece that connects IOS scanners to other CAD/CAM devices in the practice, like milling units and printers. We've tested every CAD software in the market today and, frankly, they're too complex. Dentists don't need a re-worked Lab software for their dental practice workflows - they need a Dentist software!

Clinux literally stands for Clinical User Experience and what we've created, in our opinion, is the simplest way to begin making crowns and night guards in your own office.

**Dr. Armen Mirzayan**  
CEO CAD-Ray Distribution Inc.