

DEPI™ -Ar

Dental Essential Plasma
(Improve quality of care, maximize patient care satisfaction)



DEPI™ -Ar

Dental Essential Plasma
(Improve quality of care, maximize patient care satisfaction)



Apro Korea Inc.

2~5 Floor, 63, Dangeong-ro, Gunpo-si, Gyeonggi-do, 15847, Rep of Korea

TEL. +82-31-477-7377 FAX. +82-31-477-7977

Website. www.apro-korea.co.kr

E-mail. global@apro-korea.co.kr



Plasma Sterilization & Antisepsis



What is plasma?

When energy is applied to a substance, the state changes to solid → liquid → gas

Plasma is usually the fourth state of matter, when more energy is applied from the gas, electrons that have absorbed a lot of energy from the surrounding area are released from the nucleus, leaving both the electron and the nucleus to move freely. It has electrical properties because positively charged nuclei and negatively charged electrons are separated.

Principle



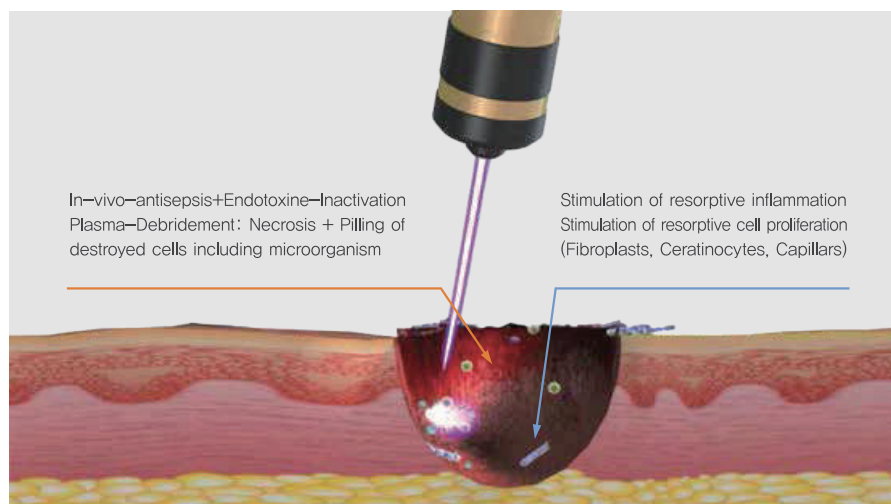
The most active phase of atomic molecules

- 01 High energy is given to 99.9% purity argon to form an ionic state
- 02 Ionized Ar is released through a nozzle to synthesize/react and induce with other molecules and atoms

Plasma effect

Excellent effect on treatment, sterilization, and sedation

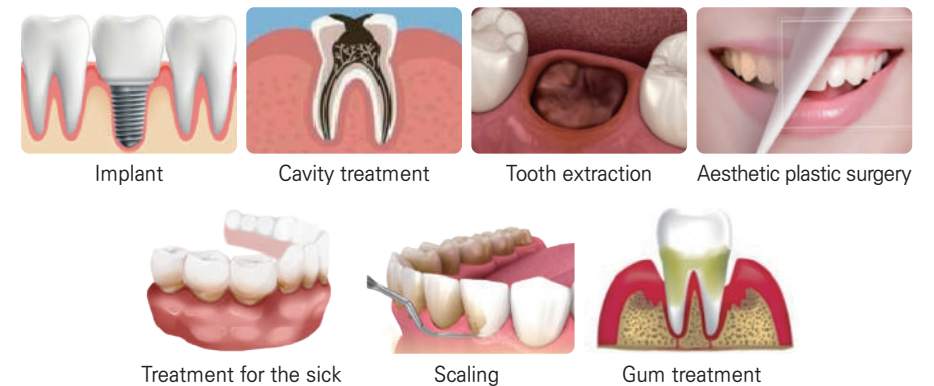
Plasma is generated by arcs by high voltage, and plasma energy is generated in the process of separating electrons by meeting gaseous atoms or molecules, which has an excellent effect due to sterilization and calming before and after dental treatment.



Cleaning and Antiseptis on the wound surface—stimulation of tissue regeneration in the depth

Applying to the DEPI (Dental Essential Plasma)

Before and after all dental treatments such as implant, cavity treatment, extraction, aesthetic plastic surgery, treatment for the sick, scaling, gum treatment, etc



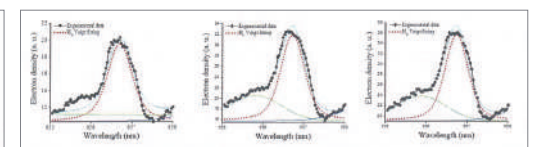
Strong Points of DEPI (Dental Essential Plasma)

- Safe, painless
- Sterilization of hard tissue and soft tissue in teeth
- Various types of treatments (surgical tongue surgery, tongue needles, open lips, mouth inflammation) may occur due to anti-inflammatory and sedative effects reduction of aftereffects
- It is very effective in treating inflammation and can prevent secondary infections (pain, swelling)
- Less pain after treatment of pain cells
- Tooth decay treatmentExcellent adhesion of post-fill material
- Excellent effect on gum whitening and a beautiful smile that shines brightly in light pink
- Human-friendly treatment reduces the recovery period immediately
- Improvement of oral health due to bioactive effect
- Shortening the number of visits to the dentist and recovery period

Ozone Test Analysis Report

Ozone rates below 0.001 ppm, lower than US FDA standards (0.05 ppm)

Test Report		
Client	Name	AFRO KOREA Inc
	Address	(15847) 2F, 2, Samsun-ro (Ssoneon-gil), Guro-gu, Gyeonggi-do, Republic of Korea
Test Sample	Name	AK-P1014
	Manufacturer	AFRO KOREA
	Serial number	P1014-AH-0003 (2019.11)
Test Laboratory	NO.	PFBC-009
	Name	Kwang Woon University Applied Plasma Medicine Center
	Address	(01807) 20, Oseong-ro, Nowon-gu, Seoul, Republic of Korea
	Telephone	(02)940-5861
	Date of Receipt	2019.06.11
	Date of Test	2019.06.11 ~ 2019.06.20
Test	Plasma density(electron density), Ozone	
Tester : Jun Sup Jho Reviewer : Jinsang Choi Approver : Eun Ha Choi <small>(KW Univ. Researcher) (KW Univ. Researcher) (KW Univ. Professor)</small>		
2019.06.20 Kwang Woon University Applied Plasma Medicine Center		



Argon gas discharge(Ar)

※ It was measured below the minimum measurement value (0.001 ppm) of the ozone measuring equipment at levels 1, 2, 3, and 4

AK-P1014 Ar plasma Ozone concentration (ppm)				
	Level 1	Level 2	Level 3	Level 4
1	Less than 0.001	Less than 0.001	Less than 0.001	Less than 0.001
2	Less than 0.001	Less than 0.001	Less than 0.001	Less than 0.001
3	Less than 0.001	Less than 0.001	Less than 0.001	Less than 0.001
4	Less than 0.001	Less than 0.001	Less than 0.001	Less than 0.001
5	Less than 0.001	Less than 0.001	Less than 0.001	Less than 0.001
Average	Less than 0.001	Less than 0.001	Less than 0.001	Less than 0.001