

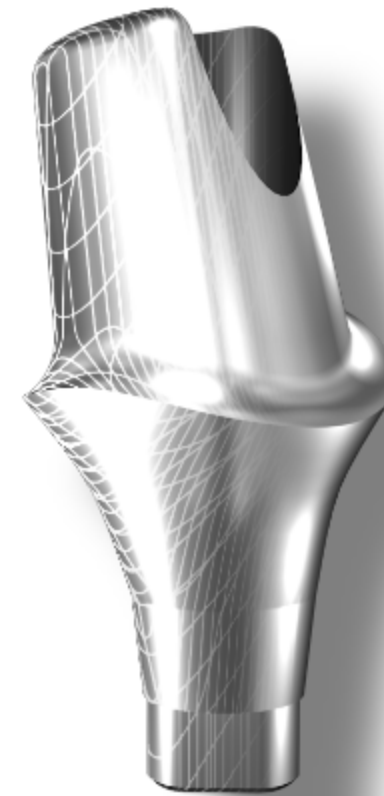


3-POINT DENTAL INC.
2-105, 12-13, Techno 1ro, Yuseong-gu, Daejeon
Republic of Korea

T. +82-42-523-3330
info@3pointdental.com

TAKE YOUR DIGITAL TO THE
NEXT LEVEL

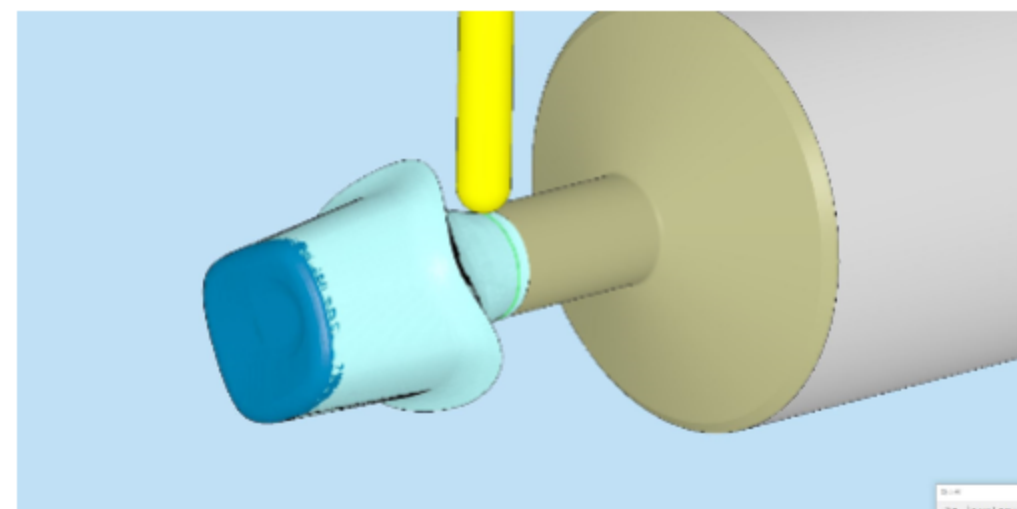
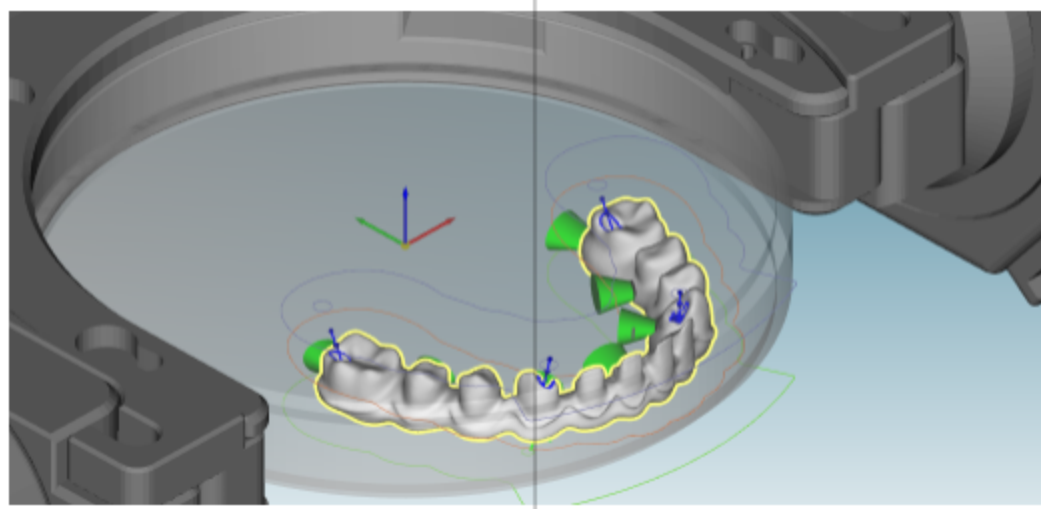
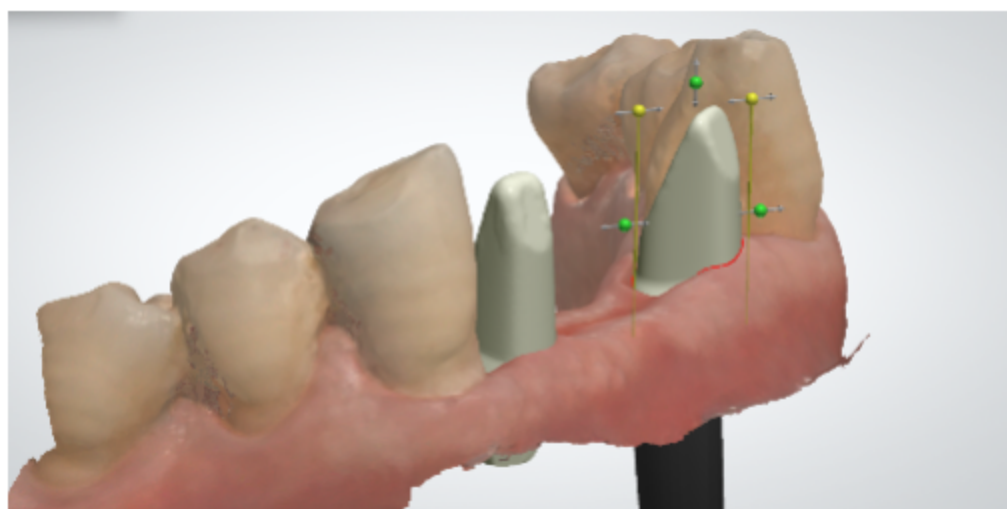
www.3pointdental.com



POINT #1
**FULLY
DIGITAL**

3-POINT DENTAL is a digital specialized dental milling center (dental laboratory) that operates both equipment such as simultaneous 5-axis MCT, CNC swiss type lathe, 3D printer, and major CAD/CAM software.

We provides the optimal solution for dental clinic and laboratory digital transformation based on experience and technology.

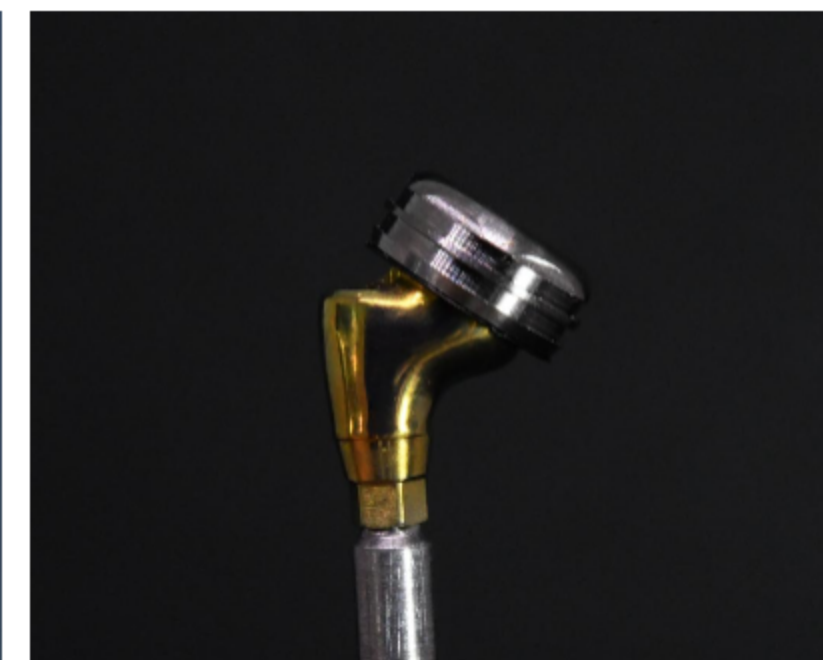
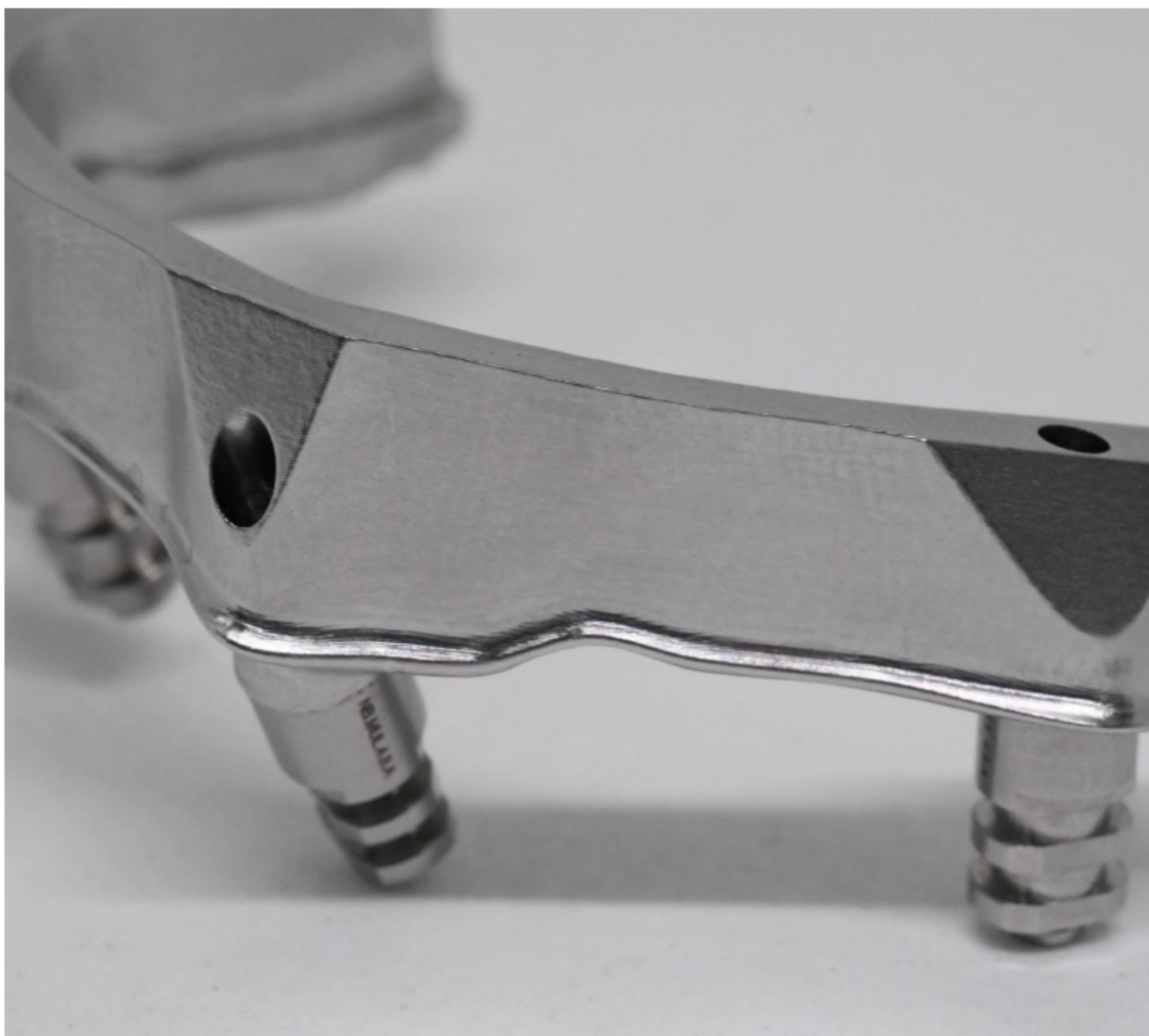


The strength of 3-POINT DENTAL is its advanced technology.
We use major CAM software to create the best results with
the optimal template for each STL file.

Through our advanced technology,
we are also manufacturing high-level prosthetics
such as All on X, Angled screw channel, and Implant milled bar.

POINT #2

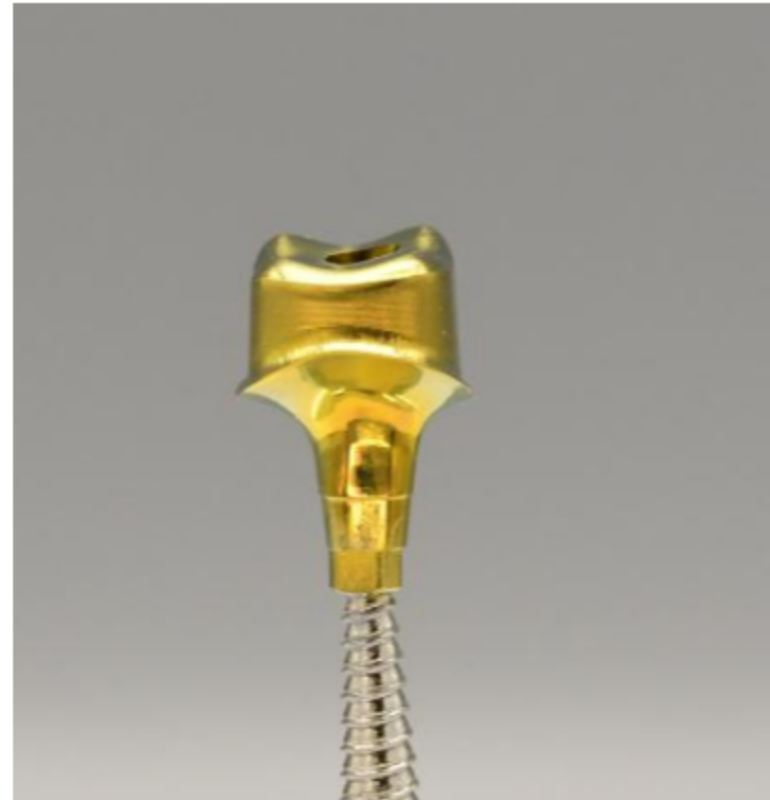
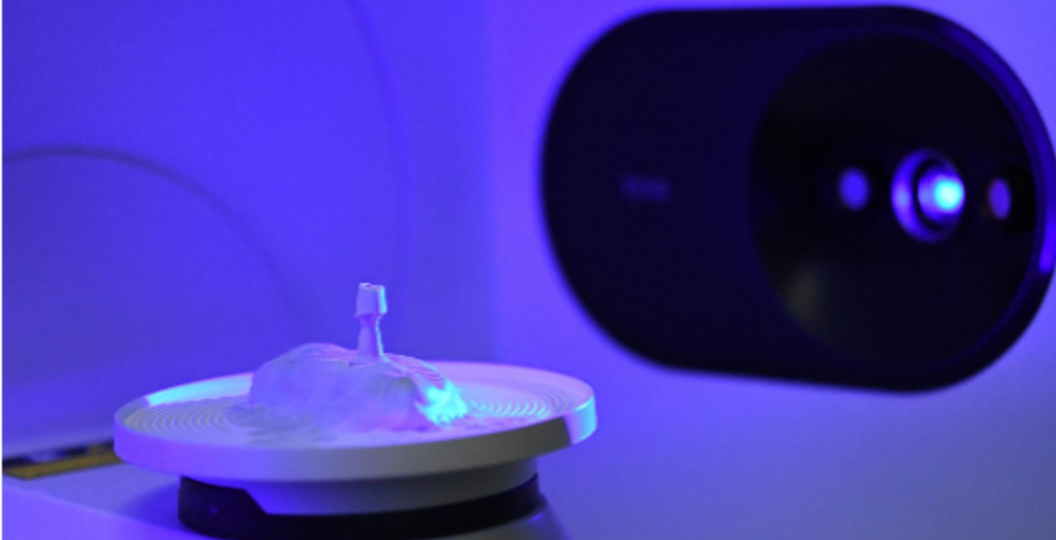
ADVANCED TECHNOLOGY

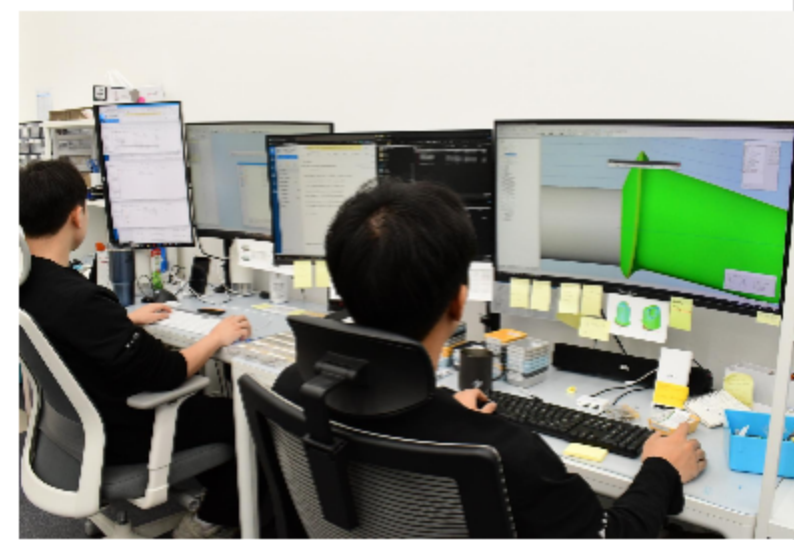


POINT #3
**PREMIUM
QUALITY**

We strive in various ways to pursue the motto of 3-Point Dental, "Premium Quality".

We provide only the highest quality completed through inspection, such as comparison of the milled result with the stl file and measurement of the implant connection in micron units.





TAKE YOUR DIGITAL TO THE **NEXT LEVEL**

Do you want to digitize your clinic or lab?
Are you struggling with your digital workflow?

We are ready to work in digital work flow.
Take your digital to the next level with us right now..

CUSTOMIZED ABUTMENT



With the spread of intraoral scanners, modelless methods (manufacturing dental prosthesis without making models) are in demand. Therefore, a highly accurate customized abutment is required.

We provide customized abutments with perfect fit through swiss type CNC lathes.



CROWN & BRIDGE

Designing with intraoral scan data requires experience and know-how in digital workflow. Without this, it is difficult for you to expect satisfactory prosthetic results.

Complete your digital workflow with a crown (bridge) made based on our digital experience and know-how.



FULL ARCH ALL ON X



Full-arch prosthesis is a high-end dental prosthesis. It is a product that requires a lot of experience and technology.

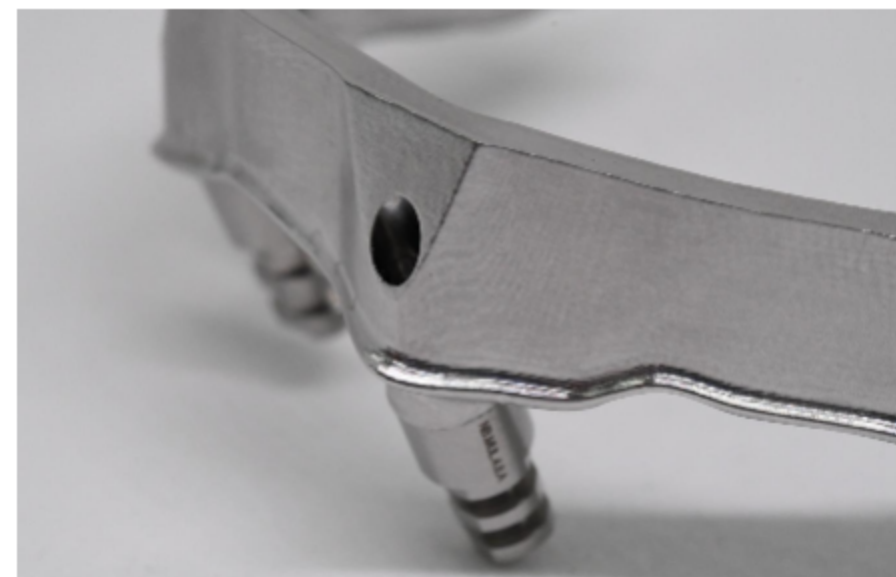
We provide all on x with advanced technology and high quality at a reasonable price.



IMPLANT METAL FRAME

We have experienced numerous metal frame processing in the meantime.

We provide the best quality metal frame you want through the optimal processing strategy using Major Cam software.





IT'S DIGITAL SO IT'S POSSIBLE

It doesn't matter what city you are in or what country you are in.
The product will arrive within the time you need.

We may be far apart from you,
but with digital workflows, distance is just a number.