

The pursuit of innovation and excellency



Lifedent (Zhuhai) Co.,Ltd

Add: Floor 2-4, Building 1 of District A, 3588 Zhuhai Avenue, Xiangzhou District, Zhuhai

+86-0756-8699593

Email: sales@lifedent.cn

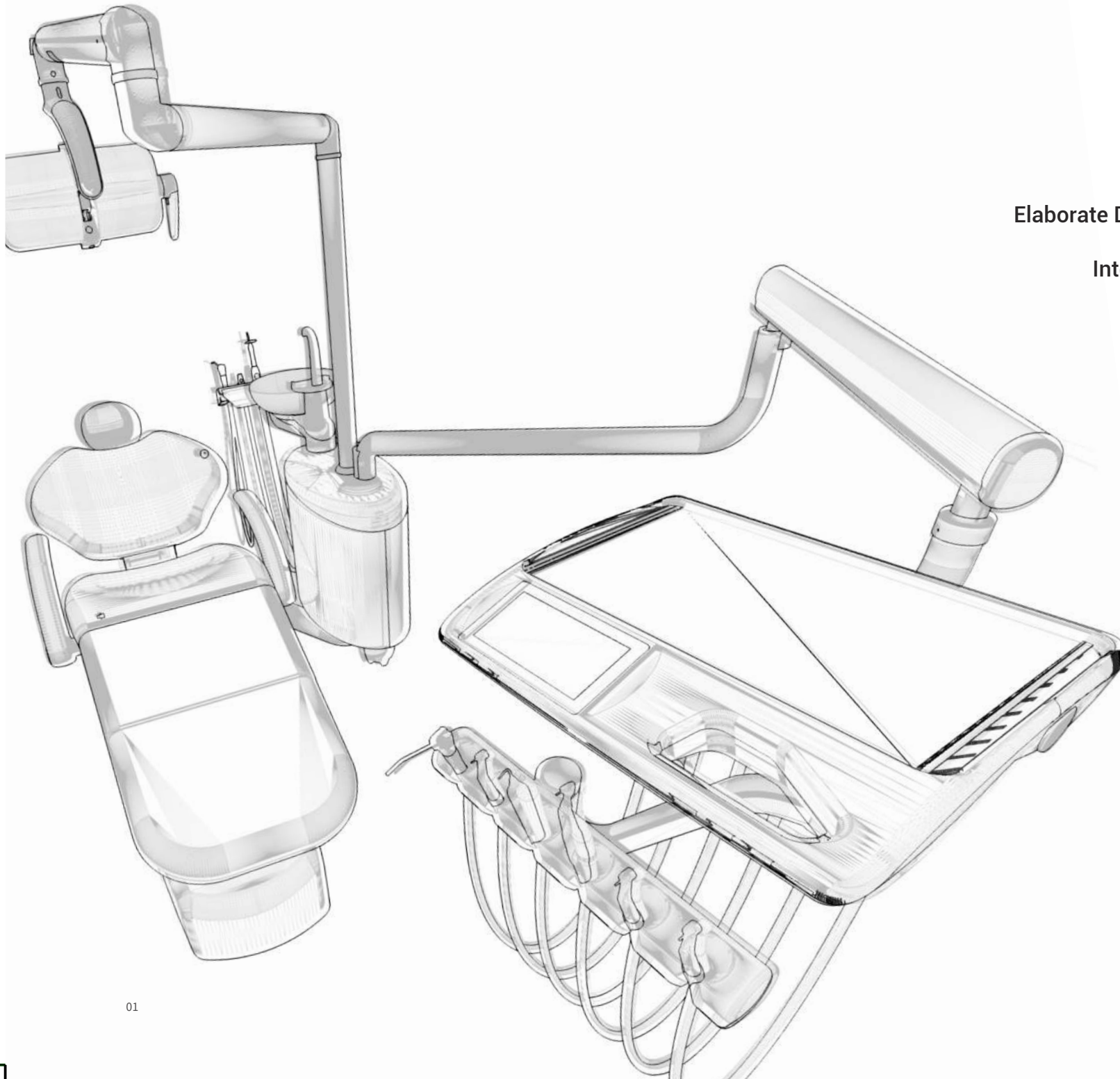
www.lifedent.cn

lifedent



INNOVATIVE TECHNOLOGY, EXCELLENT QUALITY

PROFESSIONAL DENTAL EQUIPMENT
MANUFACTURER



Elaborate Design

Intently Research

Strictly Quality Control

ABOUT US



Lifedent (Zhuhai) Co., Ltd. is a professional manufacturer of dental equipment, focusing on the R&D, manufacturing, sales and service of high-end dental medical equipment. With dental unit, steam sterilizer, dental x-ray unit, oil-less air compressor, dental electric suction unit, central air supply system, central air suction system and other product lines. Lifedent is committed to providing medical institutions with one-stop dental basic equipment overall solution.

Lifedent is located in the beautiful coastal city of Zhuhai, China. Since its founding in 2022, Lifedent has been adhering to the concept of pursuing excellent quality, advocating scientific and technological innovation, continuously investing in R&D and striving to become an excellent brand of dental medical equipment in China while maintaining high technology level and high-quality product.

In the future, Lifedent will continue to pay attention to the clinical needs, improve product innovation, keep advantages of high-end manufacturing, and contribute to the development of dental industry.

lifedent



E9-i

Electronic Simulation Controlling Technology

- 3 doctor programs for user personalized settings, 15 intelligent programmed positions.
- Dentist element using 7-inch touch screen and user-friendly interface design for easy operating.
- Dynamic instruments interlock, safe and reliable.
- Assistant instrument table has touch control panel.

Safety and Sensor Controlling

- Self-checking procedures when power-on, error code report, safety protection for backrest descending, Chair seat descending protection, Chair-Instrument interlock, emergency stop by one button.
- Active anti-suction system of dynamic instrument, extended suction time, automatic tubing flushing and disinfection system by one button, reduces cross infection.

Inner-track Linkage Design

- The patient chair has inner-track and synchronized design which guarantees excellent movement compensation and perfect comfort.
- The soft starter system ensures the start and stop of the patient chair stable without any bumps.
- Angle sensor technology ensures accurate chair position memories, no cumulative error and low failure rate.
- Press-type dual-jointed headrest, ultra-thin cast aluminium backrest, dual-structure seat, clip-on fixation for upholstery which is easy for assemble, cleaning and maintenance.

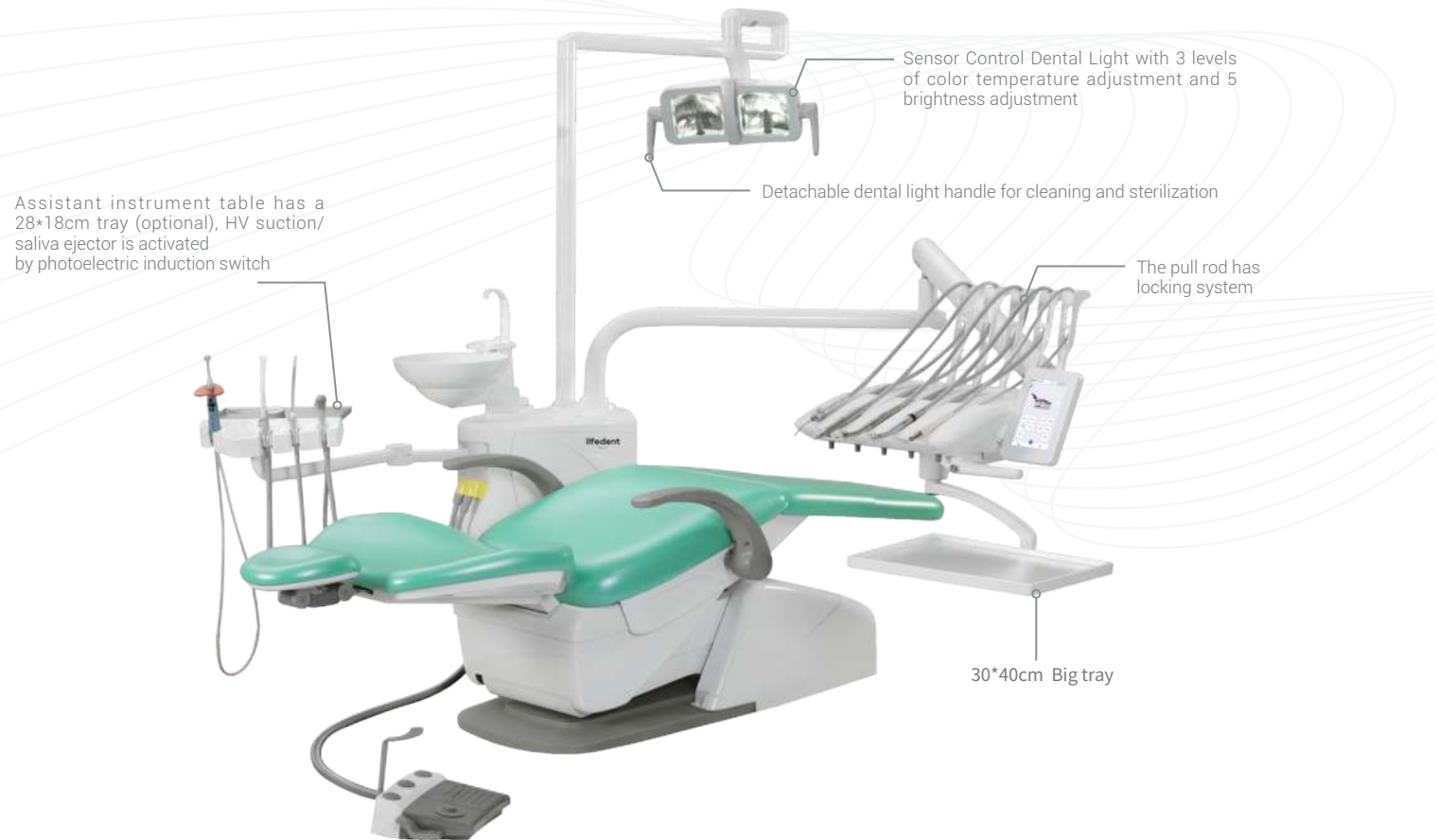
Humanization Design

- Detachable ceramic spittoon, cup filler and suction system for cleaning.
- Metal HV suction/saliva ejector handle, detachable for cleaning and sterilization.
- 2 liter large capacity water bottle, the design of adding water over the top, easy and convenient.
- Optional Dynamic instruments water heating system for customized requirements.
- Main switch for water, electricity and air.

Multifunctional Foot Control

- Memory position control, chair adjustment, linkage program control, cup filler and spittoon flushing control, dynamic instrument water switch, single chip blow, dental light on/off, emergency stop function.

- ▶ European-style whip arm instrument table
- ▶ V5 LED dental light
- ▶ Electronic simulation controlling technology
- ▶ Inner-track electric dental chair



Dental Unit

E9-c

- ▶ International hanging instrument table
- ▶ V5 led dental light
- ▶ Electronic simulation controlling technology
- ▶ Inner-track electric dental chair



Electronic Simulation Controlling Technology

- 3 doctor programs for user personalized settings, 15 intelligent programmed positions.
- Dentist element using 7-inch touch screen and user-friendly interface design for easy operating.
- On/off of all the dynamic instruments can be controlled by the photoelectric sensors.
- Dynamic instruments interlock, safe and reliable.
- Assistant instrument table has touch control panel.

Safety and Sensor Controlling

- Self-checking procedures when power-on, error code report, safety protection for backrest descending, chair seat descending protection, chair-instrument interlock, emergency stop by one button.
- Active anti-suction system of dynamic instrument, extended suction time, automatic tubing flushing and disinfection system by one button, reduces cross infection.

Inner-track Linkage Design

- The patient chair has inner-track and synchronized design which guarantees excellent movement compensation and perfect comfort.
- The soft starter system ensures the start and stop of the patient chair stable without any bumps.
- Angle sensor technology ensures accurate chair position memories, no cumulative error and low failure rate.
- Press-type dual-jointed headrest, ultra-thin cast aluminium backrest, dual-structure seat, clip-on fixation for upholstery which is easy for assemble, cleaning and maintenance.

Humanization Design

- Detachable ceramic spittoon, cup filler and suction system for cleaning.
- Metal hv suction/saliva ejector handle, detachable for cleaning and sterilization.
- 2 Liter large capacity water bottle, the design of adding water over the top, easy and convenient.
- Optional dynamic instruments water heating system for customized requirements.
- Main switch for water, electricity and air.

Multifunctional Foot Control

- Memory position control, chair adjustment, linkage program control, cup filling and bowl rinsing control, dynamic instrument water switch, single chip blow, dental light on/off, emergency stop function.

Dental Unit

E9-t

Electronic Simulation Controlling Technology

- 3 doctor programs for user personalized settings, 15 intelligent programmed positions.
- Dentist element using 7-inch touch screen and user-friendly interface design for easy operating.
- Dynamic instruments interlock, safe and reliable.
- Assistant instrument table has touch control panel.

Safety and Sensor Controlling

- Self-checking procedures when power-on, error code report, safety protection for backrest descending, Chair seat descending protection, Chair-Instrument interlock, emergency stop by one button.
- Active anti-suction system of dynamic instrument, extended suction time, automatic tubing flushing and disinfection system by one button, reduces cross infection.

Inner-track Linkage Design

- The patient chair has inner-track and synchronized design which guarantees excellent movement compensation and perfect comfort.
- The soft starter system ensures the start and stop of the patient chair stable without any bumps.
- Angle sensor technology ensures accurate chair position memories, no cumulative error and low failure rate.
- Press-type dual-jointed headrest, ultra-thin cast aluminium backrest, dual-structure seat, clip-on fixation for upholstery which is easy for assemble, cleaning and maintenance.

Humanization Design

- Detachable ceramic spittoon, cup filler and suction system for cleaning.
- Metal HV suction/saliva ejector handle, detachable for cleaning and sterilization.
- 2 liter large capacity water bottle, the design of adding water over the top, easy and convenient.
- Optional dynamic instruments water heating system for customized requirements.
- Main switch for water, electricity and air.

Multifunctional Foot Control

- Memory position control, chair adjustment, linkage program control, cup filling and bowl rinsing control, dynamic instrument water switch, single chip blow, dental light on/off, emergency stop function.

► Cart Version Instrument Table

► V5 LED dental light

► Electronic simulation controlling technology

► Inner-track electric dental chair



Dental Unit

E9-x

- ▶ Movable Cart Instrument Table
- ▶ Dental Intraoral Camera And Screen
- ▶ Implant Dental Light
- ▶ Medical Stainless Steel Instrument Tray
- ▶ Electronic Simulation Controlling Technology
- ▶ Inner-track Electric Dental Chair

Assistant instrument table has a 28*18cm tray (optional), HV suction/saliva ejector is activated by photoelectric induction switch



Electronic Simulation Controlling Technology

- 3 doctor programs for user personalized settings, 15 intelligent programmed positions.
- Dentist element using 7-inch touch screen and user-friendly interface design for easy operating.
- Dynamic instruments interlock, safe and reliable.
- Assistant instrument table has touch control panel.

Safety and Sensor Controlling

- Self-checking procedures when power-on, error code report, safety protection for backrest descending, chair seat descending protection, chair-instrument interlock, emergency stop by one button.
- Active anti-suction system of dynamic instrument, extended suction time, automatic tubing flushing and disinfection system by one button, reduces cross infection.

Inner-track Linkage Design

- The patient chair has inner-track and synchronized design which guarantees excellent movement compensation and perfect comfort.
- The soft starter system ensures the start and stop of the patient chair stable without any bumps.
- Angle sensor technology ensures accurate chair position memories, no cumulative error and low failure rate.
- Press-type dual-jointed headrest, ultra-thin cast aluminium backrest, dual-structure seat, clip-on fixation for upholstery which is easy for assemble, cleaning and maintenance.

Humanization Design

- Detachable ceramic spittoon, cup filler and suction system for cleaning.
- Metal hv suction/saliva ejector handle, detachable for cleaning and sterilization.
- 2 Liter large capacity water bottle, the design of adding water over the top, easy and convenient.
- Optional dynamic instruments water heating system for customized requirements.
- Main switch for water, electricity and air.

Multifunctional Foot Control

- Memory position control, chair adjustment, linkage program control, cup filling and bowl rinsing control, dynamic instrument water switch, single chip blow, dental light on/off, emergency stop function.

P3-i

Intelligent Linkage Program

- Touch panel is standard for doctor/assistant position.
- 3 doctor programs for user personalized settings, 15 intelligent programmed positions.
- Intelligent linkage program, cup filling and bowl rinsing control, chair position and dental light switch control by one button, improve work efficiency.

Safety and Sensor Controlling

- Chair-Instrument interlock, Chair seat movement protection, emergency stop by one button.
- Automatic tubing flushing and disinfection system by one button(optional), reduces cross infection

Electric Dental Chair

- The soft starter system ensures the start and stop of the patient chair stable without any bumps.
- Angle sensor technology ensures accurate chair position memories, no cumulative error and low failure rate.
- Press-type dual-jointed headrest, ultra-thin cast aluminium backrest, dual-structure seat, clip-on fixation for upholstery which is easy for assemble, cleaning and maintenance.
- 380mm ultra low chair position which meets various clinical requirements.

Humanization Design

- Detachable ceramic spittoon, cup filler and suction system for cleaning.
- Metal HV suction/saliva ejector handle, detachable for cleaning and sterilization.
- 2 liter large capacity water bottle, the design of adding water over the top, easy and convenient.
- Optional dynamic instruments water heating system for customized requirements.
- Main switch for water, electricity and air.
- Internal drainage system design.

Multifunctional Foot Control

- Memory position control, chair adjustment, linkage program control, cup filling and bowl rinsing control, dynamic instrument water switch, single chip blow, dental light on/off, emergency stop function.

▶ European-style whip arm instrument table

▶ V2 LED dental light

▶ Standard Electric Dental Chair

▶ IntelligentLinkage Program



Dental Unit

P3-c

- ▶ International Hanging Instrument Table
- ▶ V2 LED dental light
- ▶ Standard Electric Dental Chair
- ▶ IntelligentLinkage Program



IntelligentLinkage Program

- Touch panel is standard for doctor/assistant position
- 3 doctor programs for user personalized settings, 15 intelligent programmed positions.
- Intelligent linkage program, cup filling and bowl rinsing control, chair position and dental light switch control by one button, improve work efficiency

Safety and Sensor Controlling

- Chair-Instrument interlock, Chair seat movement protection, emergency stop by one button.
- Automatic tubing flushing and disinfection system by one button(optional), reduces cross infection

Electric Dental Chair

- The soft starter system ensures the start and stop of the patient chair stable without any bumps.
- Angle sensor technology ensures accurate chair position memories, no cumulative error and low failure rate.
- Press-type dual-jointed headrest, ultra-thin cast aluminium backrest, dual-structure seat, clip-on fixation for upholstery which is easy for assemble, cleaning and maintenance.
- 380mm ultra low chair position which meets various clinical requirements.

Humanization Design

- Detachable ceramic spittoon, cup filler and suction system for cleaning.
- Metal HV suction/saliva ejector handle, detachable for cleaning and sterilization.
- 2 liter large capacity water bottle, the design of adding water over the top, easy and convenient.
- Optional dynamic instruments water heating system for customized requirements.
- Main switch for water, electricity and air.
- Internal drainage system design.

Multifunctional Foot Control

- Memory position control, chair adjustment, linkage program control, cup filling and bowl rinsing control, dynamic instrument water switch, single chip blow, dental light on/off, emergency stop function.

Dental Unit

P3-t

Intelligent Linkage Program

- Touch panel is standard for doctor/assistant position
- 3 doctor programs for user personalized settings, 15 intelligent programmed positions.
- Intelligent linkage program, cup filling and bowl rinsing control, chair position and dental light switch control by one button, improve work efficiency

Safety and Sensor Controlling

- Chair-Instrument interlock, Chair seat movement protection, emergency stop by one button.
- Automatic tubing flushing and disinfection system by one button(optional), reduces cross infection

Electric Dental Chair

- The soft starter system ensures the start and stop of the patient chair stable without any bumps.
- Angle sensor technology ensures accurate chair position memories, no cumulative error and low failure rate.
- Press-type dual-jointed headrest, ultra-thin cast aluminium backrest, dual-structure seat, clip-on fixation for upholstery which is easy for assemble, cleaning and maintenance.
- 380mm ultra low chair position which meets various clinical requirements.

Humanization Design

- Detachable ceramic spittoon, cup filler and suction system for cleaning.
- Metal HV suction/saliva ejector handle, detachable for cleaning and sterilization.
- 2 liter large capacity water bottle, the design of adding water over the top, easy and convenient.
- Optional dynamic instruments water heating system for customized requirements.
- Main switch for water, electricity and air.
- Internal drainage system design.

Multifunctional Foot Control

- Memory position control, chair adjustment, linkage program control, cup filling and bowl rinsing control, dynamic instrument water switch, single chip blow, dental light on/off, emergency stop function.

► Cart Version Instrument Table

► Intelligent Linkage Program

► Standard Electric Dental Chair

► V2 LED Dental Light



Portable Dental X-Ray Unit

Le Ray G/Le Ray P

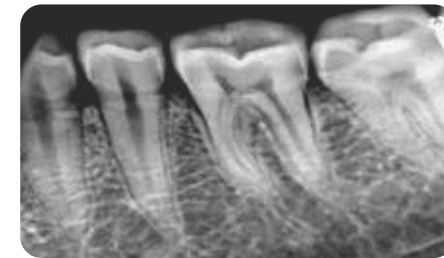
- High frequency DC constant voltage control technology
- 0.4MM focal point, clearer image.
- 2mA tube current and 70kV tube voltage to guarantee stable imaging quality.
- A variety of standard combination procedures are preset.
- High capacity battery, continuous exposure for 300 times after full power storage.
- Light weight design, good for single hand operation.
- Built-in overheat protection, effectively protect the tube.
- Multiple language options for user interface.



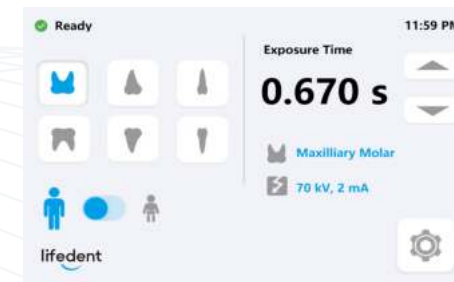
Le Ray G



Le Ray P



Clear Image Quality



Convenient imaging options

Parameters

Mains voltage	220v	Exposure time	0.02-2s
Mains frequency	50Hz	Focal spot size	0.4mm
Power input	200VA	Generator	60KHZ-100KZ
Weight	Le Ray G: 2.1kg	Weight	Le Ray P: 1.8kg

Le Ray M Floor-mounted, Easy moving

High frequency DC constant voltage control technology

- Higher imaging quality, lower radiation does.
- The ray output is more stable.
- X-ray tubes last longer.

High Quality Image

- High frequency DC constant voltage control technology, More reliable performance.
- 0.4MM focal point, clearer image.
- It is maintainable.

Safety And Protection

- Multiple tube voltage protection measures.
- The cover of the high voltage generator is made of high quality insulating material.
- Equipped with accurate tube overheating protection system.
- Fault self-checking system helps to improve the efficiency of technical services.
- Adjustable seat, comfortable and aesthetic .
- Double joint movable arm design, simple and convenient positioning.



Le Ray W Wall-mounted Space saving

Humanization Design

- Folding arm has accurate positioning and flexible movement.
- Scientific tube head design.
- Unique ergonomic design, easy to move and clean.
- Tube head using lightweight materials, makes sure the smooth rotation and positioning without drifting.
- Scale for the cone angle makes the positioning easy and accurate.
- Focal spot of 0.4mm delivers sharp images with optimal details.

Support arm with a new optimal design make sure of smooth and flexible movement and stable positioning, which brings pleasure experience for operator



Focal spot of 0.4mm delivers sharp images with optimal details



Scale for the cone angle makes the positioning easy and accurate

Parameters

Mains voltage	220V	Exposure time	0.02-2s
Mains frequency	50Hz	Focal spot size	0.4mm
Power input	200VA	Generator	60KHz-100KZ

Intraoral detector



Intraoral detector

- 2 Sizes: universal / adult
- Comfortable: rounded corners and edges for improved patient experience
- Ultra-thin: 4.4 mm digital sensor
- Durable: Reliable construction
- High Resolution (HR) or Low Dose (LD) scintillator option
- Efficient and affordable



Strong image processing software

- Smart
- Convenient
- Efficient



- APS CMOS Technology
- Smart AED-Compatible for variety X-Ray sources
- Direct deposition CSI - Lower dose imaging
- USB 2.0 direct connection
- Slim, rounded corner and thumb position
- IP68 - High reliability

Digital intraoral X-Ray Imaging System

Hybrid ICs on circuit board

- Low noise integrated circuit design

APS CMOS image sensor

- Low noise CMOS image sensors In-house design and process

CsI scintillator

- Directly deposited CsI Low Dose (LD) and High Resolution (HR) options

Robust and safety design

- Biocompatible IP68 protection Easy infection control



Designed for high reliability

- Reinforced cord connection > 70,000 bending test ($\pm 90^\circ$) passed

Encapsulation layer

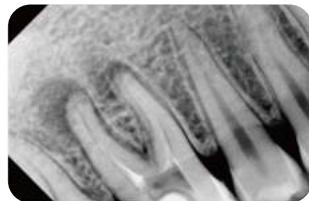
- Protects scintillator

Rounded edges

- Improved patient comfort



Real imaging effect

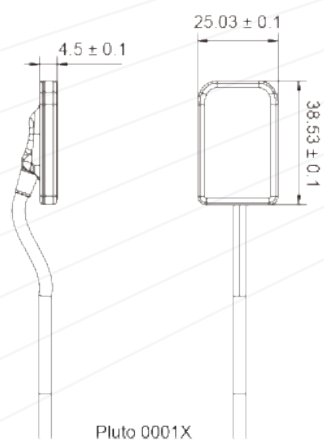
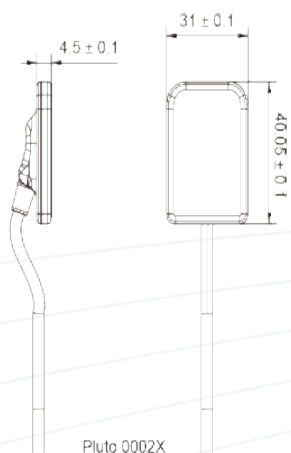


Makes perfect collocation with Lifedent Intraoral X-Ray Unit

- L Ray G
- L Ray M
- L Ray P
- L Ray W



Digital intraoral X-Ray Imaging System



Parameters

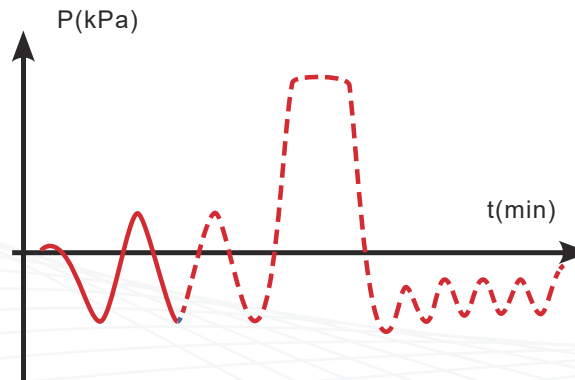
Products	Pluto 0001X	Pluto 0002X
Mechanical Dimensions(mm)	25.0×38.5×4.5	31.0×40.0×4.5
Active Area(mm ²)	20×30	26×36
Pixel Matrix	(1.5M) 1000×1500	(2.34M) 1300×1800
Sensor Technology	APS CMOS	
Scintillator	Directly deposited CsI:Tl	
Length of Cable(m)	Standard 3m/Option 5m	
Pixel Pitch(μm)	20	
Theoretical Resolution (lp/mm)	25lp/mm	
Gray Level	16 bit	
Exposure Mode	Smart AED	
Ingress Protection	IP68 for Soak disinfection	
Additional	Support TWAIN protocol	
Operation System	Windows 7 and above,32/64 bit	

Apollo 23/Apollo 29



Apollo 23

Chamber data: Standard 5 trays



Humanized Design Concept

- With Thermal printer as standard configuration.
- Double drainage joint design, easy to use.
- Automatic water supply scheme (optional) automatic water supply and drainage.
- Standard large capacity USB disk can store 1 million sterilization records.
- Standard electric door model.
- Fault reporting function.

Sterilization cycle with high performance

European Class B model

- European Class B model, with 3-stage pre-vacuum process.

4 test programs

- 4 test programs onboard which is easy to test the sterilizer performance and working environment.

5 sterilization cycles

- 5 sterilization cycles available to meet the customers' different needs.

"THT" process validation system

- THT process validation system monitors the temperature and pressure in real time, thus ensures the validity of the sterilization.

RS-232 serial port

- Universal RS-232 serial port allows the user either to connect the autoclave to a label printer, or to a PC to monitor and test the validation of the sterilization cycles.



Apollo 29

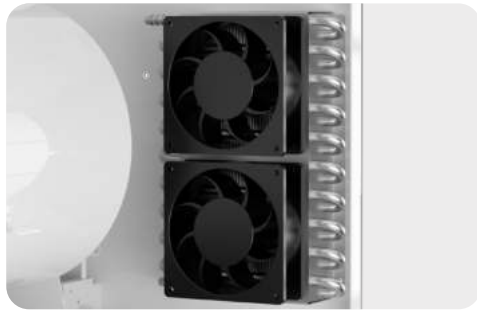
29L large capacity, fast turnover

Satisfy the sterilization of 2 sets of implant surgical instruments

Steam Sterilizer



German Vacuum Pump



large area cooling membrane and double fans, makes cooling faster.



Thermal printer and double drainage connector, more convenient.



Apollo29: Two maximum size implant surgical instrument kits can be easily loaded simultaneously.



Apollo29: At full load, Class B can be completed in 32min. and Class S can be completed in 20min.

Effective Security Protection

- Pressure sensor can be accurate to 1mbar which monitors the pressure in real time.
- With automatic over-temperature protection device to avoid accidents caused by excessive temperature.
- Double overpressure protection ensures the safety of sterilization process.
- Double door lock safety protection can prevent misoperation and reduce the risk factor.

Parameters

Model	APOLLO 23B	APOLLO 29B
Voltage	2300W	3300W
Power	220V-230V	220V-230V
Frequency	50/60Hz	50/60Hz
Chamber size	23L	29L
External dimension	692×451×455mm	692×604×567mm

Water Filter Machine(neo)



- Dual-mode scheme of water supply, connection Lifedent Aoplo sterilizer, automatic water supply.
- Water quality display function, water quality alarm function.
- Filter uses fast connection design for easy replacement, alert function with a replacement.
- Long service life and low maintenance costs.

Parameters

Product Specifications	450×136×370mm (L*W*H)
Filtration mode	reverse osmosis filtration
Filter level	Four filtering levels
Display	LCD display
Flow rate	15L/h
Outlet water conductivity	< 15μs

Sealing machine X330

Excellent performance



- The special heater makes the sterilization bag evenly heated and has good sealing performance.
- The 12mm sealing band makes a stronger seal.
- Built-in stainless steel blade makes a flat cutting.

Better using experience



- The integrated design of the sealing machine is firm and stable.
- The optimized design of roller shaft makes the sterilization bag rolls smoothly.
- Bi-directional handle provides comfortable operation.

Easy machine maintenance

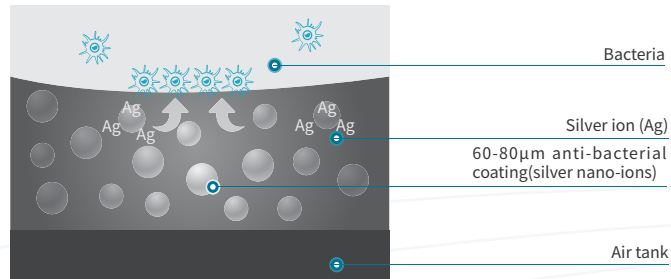


- Simple blade replacement saves maintenance costs.
- The clamp can be adjusted at any time to achieve a good sealing effect.
- The ASA plastic cover is not easy to age and discolor.



Oil-less Air Compressor

SA series



Highly effective antibacterial

- Ionic-silver anti-bacterial coating: Granting a clean, infection-less output.

Intelligent actuation

- Intelligent Drive Control.

Rust prevention

- Internally rust-proofing air tank.

Automatic drainage

- Equipped on all series: Automatic Water Drainage.

Product Details

Products	Voltage/Frequency (volt/Freq Hz)	Power VA	Air Flow L/min(0.4MPa)	Tank Capacity (L)	Noise Level (dB)	Dimension L*W*H(mm)	Weight (kg)	Applicable Workplace
SA055	AC220V/50Hz	500	60	32	≤ 64	406×406×633	24	1
SA075	AC220V/50Hz	750	80	32	≤ 68	406×406×653	26	1-2
SA150	AC220V/50Hz	1500	160	60	≤ 70	746×420×764	50	3-4
SA220	AC220V/50Hz	2250	240	90	≤ 73	996×420×764	70	5-6
SA300	AC220V/50Hz	3000	320	120	≤ 73	1216×420×764	90	7-8



SA055



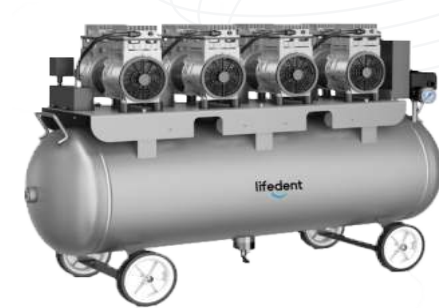
SA075



SA150



SA220



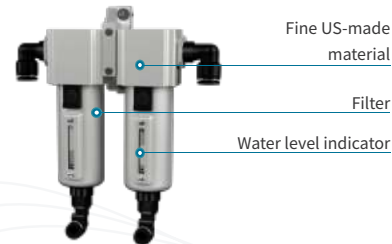
SA300

Oil-less Air Compressor

SP series

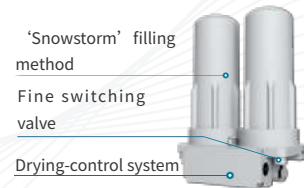
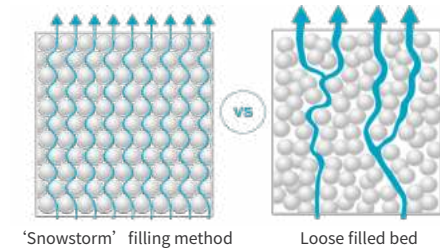
Well-designed filtration device

- Filters that adopt fine American-made material, block tiny particles at the first place.
- Minimum pressure-drop during service, granted by carefully-designed inner structure.
- Accurate control of air flow & pressure adjustment.



'Snowstorm' filling method

- Extended product life without tunneling effect, enabled by tightly & evenly stacked layers of adsorbent.
- Reduced air consumption, achieved with unique design.
- Effectively reduce the wear of the adsorbent to prevent its dusting, so as to obtain a stable dew point.



Exclusive drying system

- Exclusive design of drying system: Keep the air pure & oil-less with its dew point under -20°C .
- Non-heat regenerative adsorbent drier: Maintain the exceptional quality of air output.

Product Details

Products	Voltage/Frequency (volt/Freq Hz)	Power VA	Air Flow L/min(0.4MPa)	Tank Capacity(L)	Noise Level	Dimension L*W*H(mm)	Weight (kg)	Applicable Workplace
SP075	AC220V/52Hz	750	80	32	≤ 68	633×428×633	49	1-2
SP150	AC220V/52Hz	1500	160	60	≤ 70	951×428×653	65	3-4
SP220	AC220V/52Hz	2250	280	100	≤ 73	1201×428×780	88	5-6
SP300	AC220V/52Hz	3000	335	100	≤ 73	1421×428×780	108	7-8



SP075



SP150



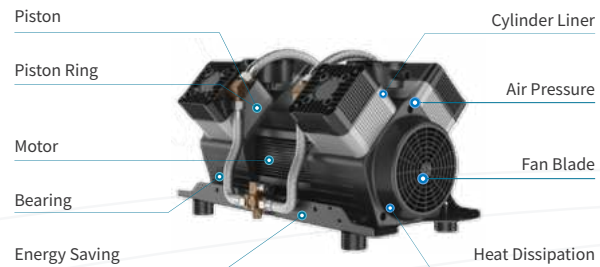
SP220



SP300

Oil-less Air Compressor

SS series



stable performance, durable machine, high quality

- Oil-less designed to be ensured purity of air, environmental protection.
- Durability test over 10000 hours.
- The exterior structure adopts shock absorption design to reduce noise.
- Voltage protection, high temperature protection.
- Permanent magnet synchronous motor, more energy saving.



Compact structure



Moth proof,
Anti-emulsification



Low noise



Light weight

Product Details

Model	Voltage/Frequency (Volt/Freq Hz)	Power VA	Air Flow L/min(0.4MPa)	Tank Capacity(L)	Noise Level (dB)	Dimension L*W*H(mm)	Weight (kg)	Applicable Workplace
SS150	AC220V/52Hz	1500	160	60	≤ 73	965×455×838	75.5	3-4
SS220	AC380V/52Hz	2250	280	100	≤ 74	1204×455×827	91	5-6
SS300	AC380V/52Hz	3000	335	100	≤ 75	1204×455×827	98	7-8



SS150



SS220



SS300

Dental Suction Unit

VC series



VC10/VC20/VC30



VC60+/VC80+



Efficient separation of wastewater



Two-stage air/water separation process, extra care for safety



Auto start-stop system: Reactive to the start & stop of dental units



Detecting dental unit, automatic start and stop



Double motors for vacuum pump and drainage



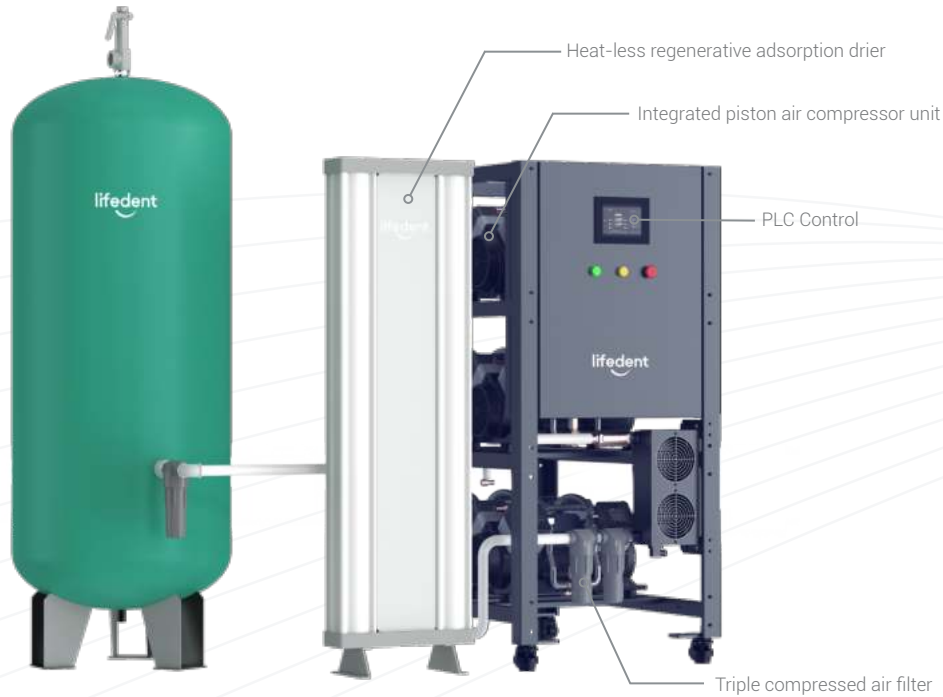
Low noise level

Product Details

Model	VC10	VC30	VC30+	VC60+	VC80+
Applicable workplace	1	2	3-4	5-8	8-10
Input power	220V(1~)/50~60Hz	220V(1~)/50~60Hz	220V(1~)/50~60Hz	220V(1~)/50~60Hz	220V(1~)/50~60Hz
Rated power	500W	700W	1100W	1000W	2000W
Maximum current	3.5A	4.8A	7.3A	4.5A	6A
Negative pressure	-12	-13	-15	-25	-25
Maximum amount of air flow	300L/min	600L/min	1200L/min	1500L/min	2000L/min
Frequency conversion	NO	NO	NO	YES	YES
Noise	65dB(A)	65dB(A)	68dB(A)	68dB(A)	68dB(A)
Weight	22.5kg	23.5kg	28.5kg	43kg	47kg
External dimension	300×420×630mm	360×420×630mm	360×420×650mm	380×450×720mm	380×450×720mm

Central Air Supply

SC series



- The compressed air supply is conformed to the standard GB 50751-2012 Technical Code for Medical Gases Engineering.
- Central air supply with adsorption type drier in the middle of the air compressor station, each air compressor can be used for up to 70 dental units (SC180).
- It can be customized according to customers' requirements.

Product Details

Model	Dimensions (H x L x W cm)	Air Storage tank (L)	Weight (kg)	Frequency (Hz)	Power (kW/380 V)	Current (A)	Number of connected dental unit (sets)	Air displacement(L/min), bar=5
SC180	160×74×120	600	380	50	18.0kw	33A	50-70	2040
SC120	160×74×120	600	280	50	12.0kw	22A	35-50	1360
SC90	160×74×120	600	230	50	16.5kw	16.5A	20-35	1020

Central Air Suction

BY series



BY-6L/BY-10L

- Dual motor design; Separation motor (separation of water and air, water can not filled in the suction motor).
- The whole series use ultra-high voltage main engine, high speed/low temperature rise, low load current, low noise.
- Integrated design, independent research and development of control system, visual operation, real-time monitoring, modular design.
- Multiple model options to meet different requirements.



BY-30L/BY-50L



Efficient



Energy
conservation



Low noise



Stable



Intelligent

Product Details

Model	Voltage (AC/V)	Power (KW)	Maximum current (A)	Maximum amount of air flow (L/min)	Negative pressure (KPa)	Noise (dB)	Number of connected patient chairs (sets)	Dimensions (mm)
BY-6L	380V	3.3	13	23Litres	-15~-25	< 68	15	600×460×520
BY-10L	380V	4.4	15	18Litres	-15~-25	< 68	20	880×560×600
BY-30L	380V	5.5	26	23Litres	-15~-35	< 65	30	1200×700×1100
BY-50L	380V	8.8	32	18Litres	-15~-35	< 65	50	1200×700×1100

Optional Items



**Built-in Scaler
E2**



**Built-in Scaler
E2+**



**Built-in Curing light MaxCureG
MaxCureG**



**Dental Intraoral Camera all-in-one
A9S-X**



**Dental Intraoral Camera all-in-one
A6M-X**



**Dental Intraoral Camera all-in-one
A3M-X**



**Dental High-Speed Turbine
Handpiece XP1**



**Dental High-Speed Turbine
Handpiece XP2LG**



**Dental High-Speed Turbine
Handpiece XP4T**



**Dental High-Speed Turbine
Handpiece XP5LG**



**Dental Low-Speed Motor &
Handpiece MP-L530**



**Brushless LED Electric
Micromotor E1**

