

A close-up photograph of a piece of wood, showing a detailed view of its grain. The wood has a warm, golden-brown hue and is characterized by dark, wavy, and somewhat irregular lines that create a complex, organic pattern. In the upper left quadrant, there is a large, semi-transparent circular watermark. This watermark contains the letters 'SG' in a stylized, bold font, with horizontal lines passing through the letters. The overall composition is a high-quality, artistic representation of natural wood texture.

OUR PRODUCTS

SCHORN & GROH

VARIETY

For more than 60 years the focus at Schorn & Groh has been set on working with genuine wood and high-quality veneer products.

2

Our company is among the global leaders in the veneer industry. Our experienced employees search the best growing regions on all continents for logs suitable for the manufacture of high-quality veneers and lumber.

Our products:

- high-quality veneer from more than 140 species of wood **Page 4**
- exclusive collection One-of-a-Kind **Page 6**
- naturally CoCo veneer **Page 8**
- shimmering Shining Grey veneer **Page 10**
- spliced veneers **Page 12**
- easy-to-handle EASiWOOD **Page 14**
- fleece-backed spliced veneers fleece'n'flex **Page 16**
- end-grain veneer Butt Cut **Page 18**
- plaited veneers muto GRID **Page 20**
- textile-like veneers NUO **Page 22**
- lumber **Page 24**
- table tops **Page 26**
- logs **Page 28**
- overview of wood species **Page 30**



Because environmental protection is so important to us, we have long supported sustainable forestry.





VENEER

Hardly any other natural product is as varied and as valuable as wood. Its use as veneer is particularly ecological.

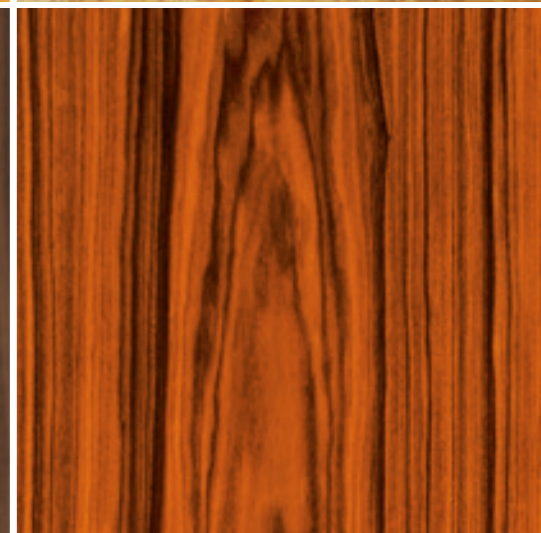
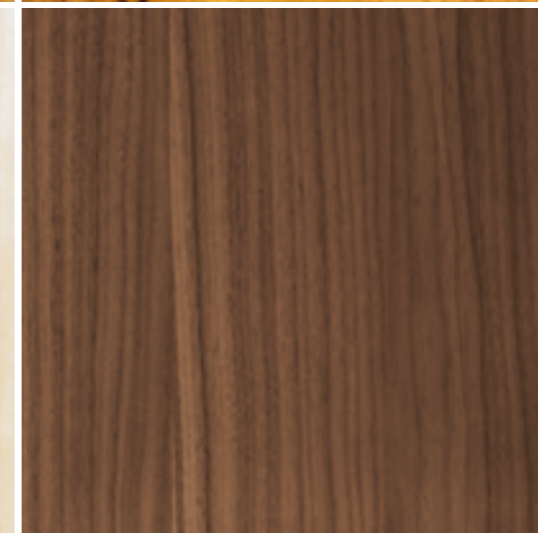
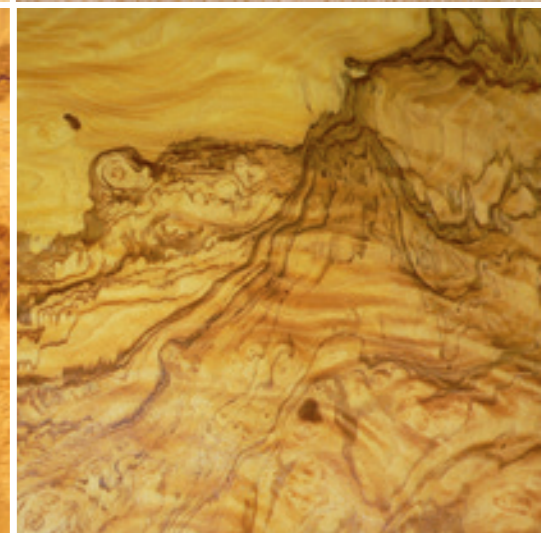
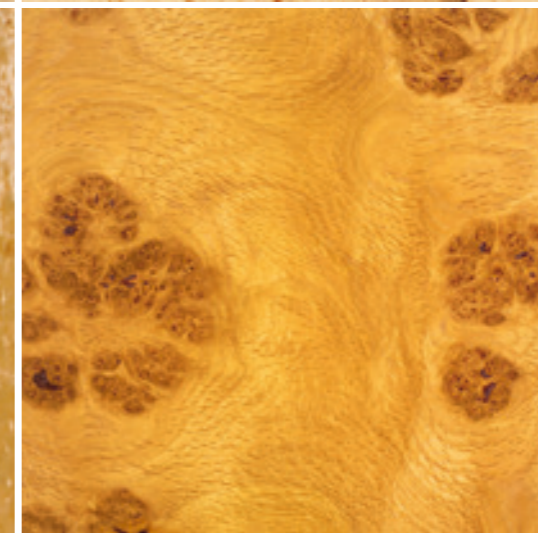
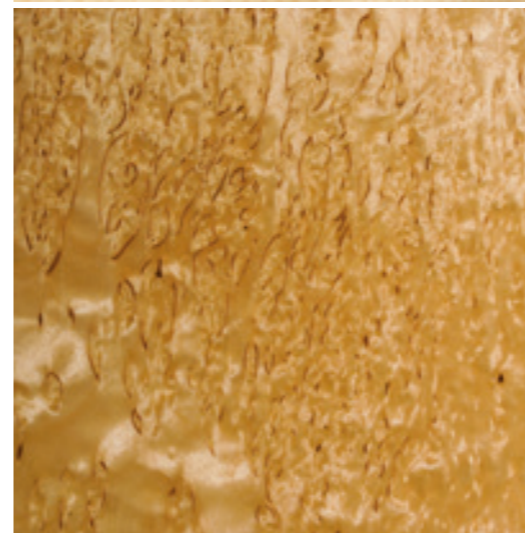
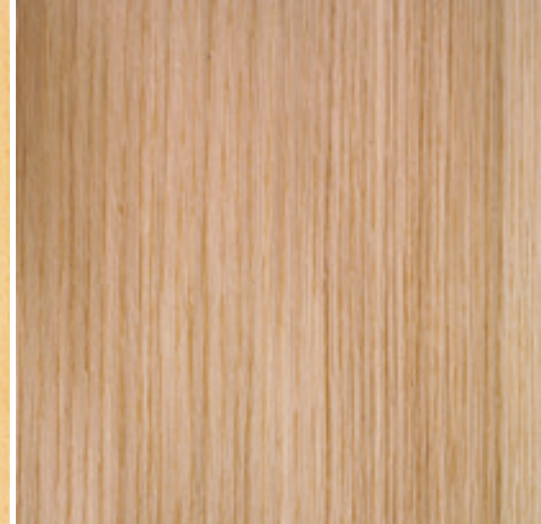
4

Years of experience and a good feeling for wood are prerequisites for log purchasing, for few trunks are suitable for the manufacture of high-quality veneer. Our experienced purchasing team buys the logs which we turn into veneer of excellent quality. Much of our work is still done by hand in processes that retain the character and uniqueness of the wood.

Right now Schorn & Groh has more than 140 species of wood in stock, which includes burls and FSC® or PEFC™-certified flitches. Our well-stocked warehouse guarantees high quality and immediate availability of your chosen veneer. A special advantage we offer is individually compiled assortments tailored to customer's requirements.

► More information at www.sg-veneers.com

*Are you planning
a large project?
Visit our veneer
warehouse in Karlsruhe
and let us advise you
personally in our
showrooms.*



ONE-OF-A-KIND

A selection of highly individual flitches, full of character and natural charm.

6

The flitches in the exclusive collection One-of-a-Kind are among the most spectacular objects Nature offers us. Each flitch has a very rare and highly individualized grain. All are truly rough diamonds of fine wood. With high levels of creativity and know-how, we transform the flitches into high-quality veneer for our exclusive collection.

One-of-a-Kind Premium

Because the purchaser acquires the entire flitch, he owns a unique object that no one else has. There's just one in the world. A certificate attests to the exclusivity of your One-of-a-Kind Premium flitch.

One-of-a-Kind Select

The fascinating flitches from One-of-a-Kind-Select are suitable for projects that require smaller amounts of material. One-of-a-Kind Select veneers can be ordered in quantities starting at 100 square meters.

► More information at www.exclusive-veneer.com

one-of-a-kind



COCO

Inspired veneer, naturally dyed in warm shades of brown.
CoCo – inspired veneer.

8

The special color of CoCo results from a manufacturing technique that's similar to the natural process that creates bog oaks. Our process accelerates the veneer's natural change of color and stains the wood completely. Unlike smoked oak, CoCo can be produced in light and medium shades of brown without application of ammonia.

CoCo veneers can be combined with color and other materials to yield impressive designs. The warm coloring suggests tranquility and underscores the naturalness of the raw material wood. CoCo can be used in many different ways and can be combined with bright colors or with plain white or grey. You may order CoCo as raw veneer or processed, for example, into spliced veneers with or without fleece backing.

- ▶ CoCo is currently available in four different shades: Taupe, Cognac, Coffee and Nero.
- ▶ New in stock: the vintage CoCo Venezia. The varied discoloration of the wood and cracks lend the veneer its rustic look.
- ▶ You can find more information about CoCo **here**.

COCO
INSPIRED VENEER





SHINING GREY

Veneer in timeless glossy shades of grey. A true innovation from Schorn & Groh.

10

Shining Grey is a fascinating innovation featuring the currently fashionable color of grey. The glossy grey veneers can be combined with other colors. With natural shades, for example, you can create an elegant ensemble or add vibrant colors to a grey background.

The grey coloring of the wood can be caused by natural weathering. Our innovative manufacturing technique mimics the lengthy ageing process of wood to yield Shining Grey. Just like the natural process, our method is gentle and environmentally friendly.

- ▶ Shining Grey is available in the gray tone Silver in the wood specie oak.
- ▶ Recreate the atmosphere of an alpine holiday with the knotty vintage variant – Shining Grey Sunblast.

▶ You can find more information about Shining Grey **here**.

ShiningGrey



SPLICED VENEERS

Spliced veneers Made in Germany. More than 140 species of wood are available, including burl veneers and other rarities.

12

Schorn&Groh spliced veneers are made from high-quality raw veneer in our factory in Eschelbronn in southern Germany. We generally offer urea resin-bonded veneer jointing, but can also fill orders for spliced veneers jointed with conventional adhesive techniques.

Your benefits:

- personal and detailed consultation
- veneer specially selected for your project
- fast availability
- on-time delivery
- optional special delivery for rush orders

► For more information, please visit our **website**.



EASiWOOD

The extremely flexible veneer combines the natural beauty of wood with easy use.

EASiWOOD is high-quality veneer of certified wood with extra strong fleeced backing. During its manufacture EASiWOOD is pre-flexed to make the fibers supple and extremely flexible.

The flexible veneer is very easy to use. It can be cut simply with scissors or craft knife and can be securely bonded to most dry substrate. The surface of the wood is pre-sanded and requires only the finishing touch of varnish or oil.

► You can order EASiWOOD in standard sizes of 2,440 x 1,220 mm (minimum order quantity: one sheet). Fourteen variants are currently available. More information at www.sg-veneers.com or order directly using following email address team@sg-veneers.com.

EASiWOOD
Flexible Veneer Sheets



FLEECE'N'FLEX

Fleece-backed veneers conform to your ideas and special requirements.

fleece'n'flex veneers are highly flexible yet strong. They are suitable for covering multi-dimensional shapes or challenging substrate and for many other uses. We produce fleece'n'flex applying conventional jointing techniques with urea resin bonding, and in customized sizes up to approximately 3.28 meters by 1.28 meters. Depending on the requirements, we select suitable adhesives and fleece.

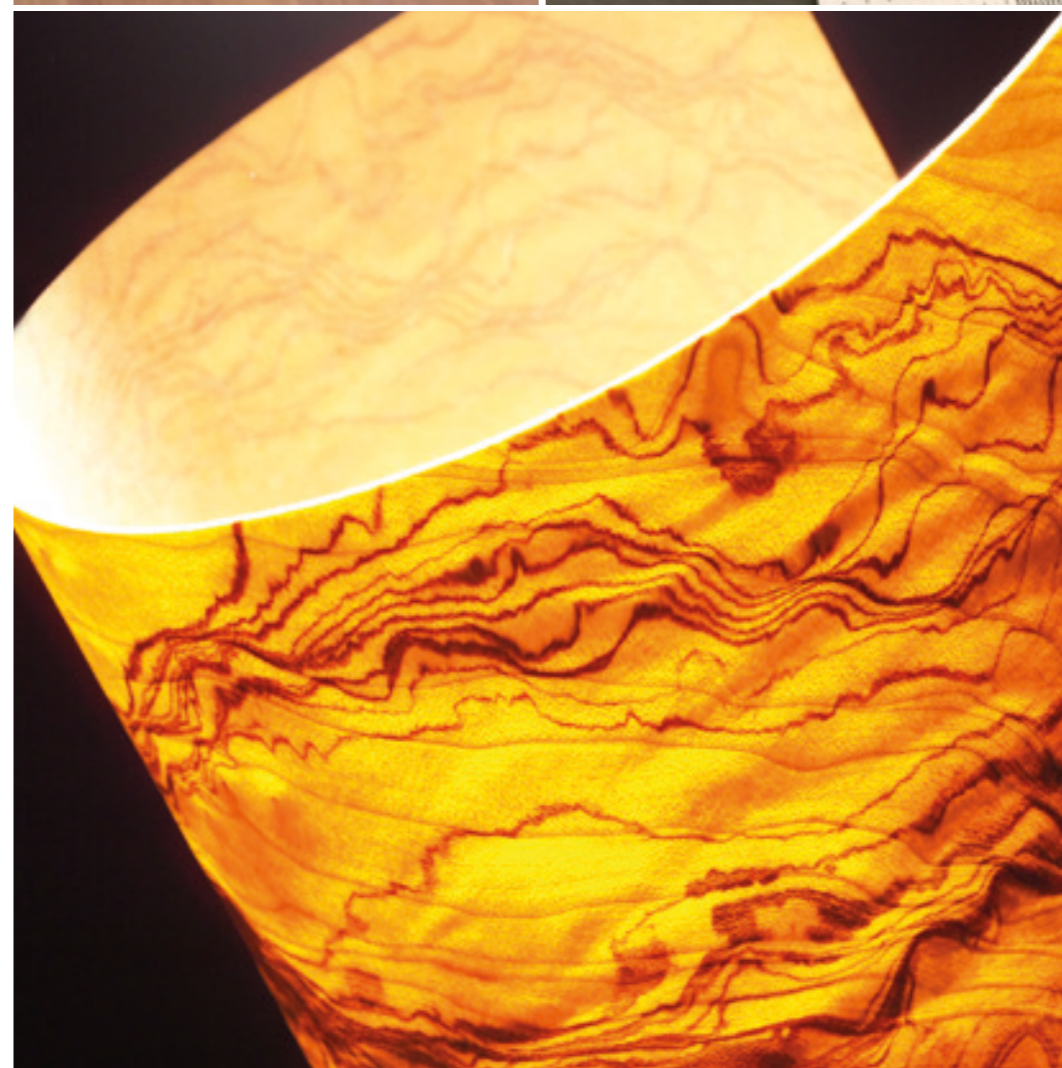
fleece'n'flex is as flexible as your wishes.

These options are available:

- sanded extra thin (translucent)
- pre-sanded and/or flexed
- with double veneer layer for greater strength
- with lacquered or melamine-coated surface
- with self-adhesive back
- as wood species mix
- with D4, phenol resin or melamine resin bonding
- perforated (lets through air and sound)

► For more information, please visit our **website**.

fleece'n'flex



BUTT CUT

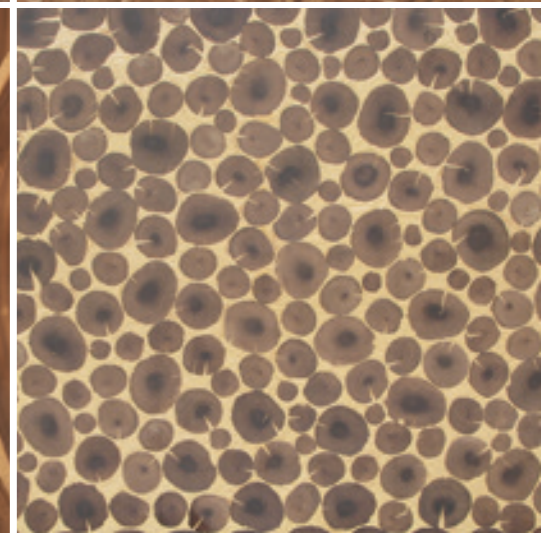
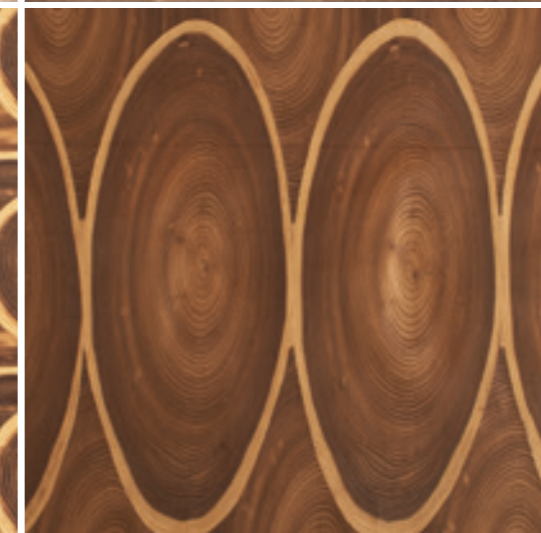
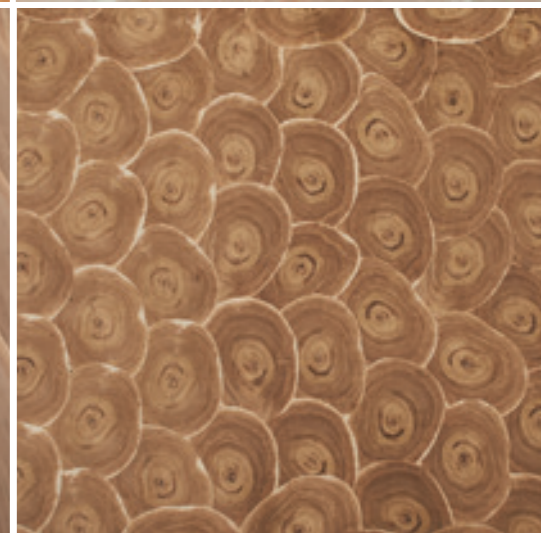
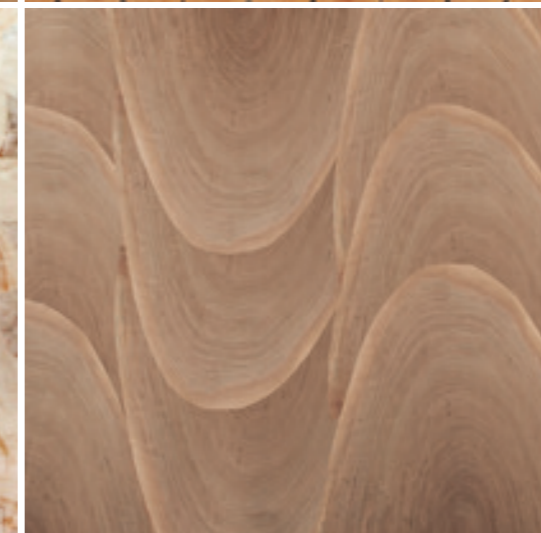
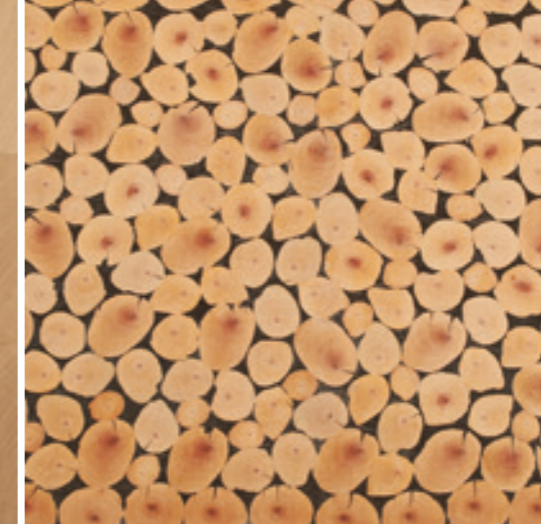
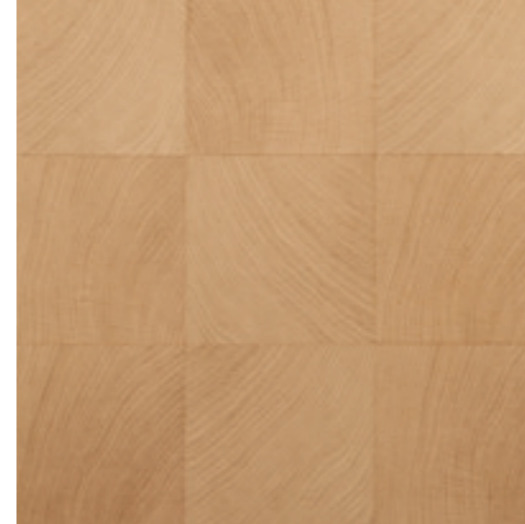
Razor-thin veneer cut from precious end-grain wood in unique designs.

The fascinating look of Butt Cut is created by the matching of many small pieces of end-grain wood. The veneer has a special rustic character. Butt Cut is manufactured by cross-cutting the tree trunk rather than cutting it lengthwise. The annual growth rings form lovely circular patterns.

Butt Cut has many advantages over solid cross-cut wood:

The thinness of the veneer relieves the stress in the cross-cut wood while fleece on the back adds stability and allows easy processing. When handled properly, the product shows no trace of glue bleed-through, warping or distortion.

► More information and photos of all 16 variants can be found on our website: www.sg-veneers.com



MUTO GRID

Fleece-backed veneer with plaited look.

20

Plaited veneer with perfectly coordinated patterns and colors opens up a new dimension in design. The fascinating three-dimensional plaited pattern was developed in close cooperation with architects and designers.

In a complex process, the single pre-sanded leaves of veneer are plaited to create highly diverse surfaces and then backed with fleece. The fleece backing gives the material greater flexibility and guarantees trouble-free processing. Let yourself be inspired by our designs.

► You'll find all technical information about muto GRID on our website: www.sg-veneers.com

*muto GRID can also be
created and produced
to your individual
requirements.
(Minimum order quantity:
approx. 100 sqm)*



NUO

Wood as soft as leather – an evolution in the world of materials.

22

The pleasant feel and the beauty of this novel material convince and inspire immediately. NUO consists of high-quality veneer that comes exclusively from sustainable forestry. The thin real wood is bonded to a textile backing – which we select for you depending on the application – by using PU glue and the wood surface is then lasered.

The fine engraving gives the wood surface its flexibility. The material can be coated with a protective layer of varnish as desired. The backing material gives strength and ensures that NUO is easy to process.

► You can find all technical information about NUO on the website: www.nuo-design.com

NUO can also be designed and produced completely individually according to your wishes. Please contact us. (Minimum order quantity required).



LUMBER

Schorn&Groh offers high-quality lumber in all commercially available wood species from Europe, America and Africa.

Our lumber comes from the same growing regions as our veneer, so you can select both to match.

Depending on the intended use, the trunks are processed as rift cut or flat cut lumber in boules. This lumber is particularly suitable for premium interior joinery, furniture-making and yacht fittings. We offer the woods in thicknesses of 25, 30, 35, 40, 50, 52, 60, 65, 70 and 80 mm, air-dried or kiln-dried in our own drying facilities.

Schorn&Groh service includes qualified, personal consultation for cabinet-making companies and interior finishing operations. We will be happy to visit you and help plan your project.

► More information about **Lumber**

*The Schorn & Groh
branch in Ehrenkirchen
(southern Germany)
specializes in high-
quality lumber.*



TABLE TOPS

Solid table tops with an extravagant look.

26

As distinctive as the logs from which they are sawn, tabletops are particularly sought after for their natural wood features such as forest edge, knots, cracks, ingrowths, sapwood or flakes.

The design possibilities are as breathtaking as often is the craftsmanship challenge of setting the stage for these raw beauties. That's why Schorn & Groh offers tabletops in a rough pre-sanded version but also calibrated, planed, lacquered, oiled or cast in epoxy resin on request. Schorn & Groh will also be happy to advise you on the selection of a suitable table frame.

We offer the table tops in the thicknesses 50, 55, 60, 65, 70, 75, 80, 85, 100, 110, 115 and 130 mm and different widths. More than half of our entire stock has a width of more than 100 cm. The lengths are between approx. 300 cm and 550 cm.

► For more information, please visit our **website**.





28



LOGS

Logs in high veneer-grade quality from the best growing regions of the world.

Schorn & Groh offers logs from the best growing regions. The valuable trunks come mainly from Germany, but also from the USA and Africa.

We offer a variety of burls in addition to more conventional wood species such as beech and oak. More than 50 species of wood are available.

We are happy to satisfy special requests. You may have your logs waxed, measured or weighed and delivered in containers or by truck as quickly as possible.

► For more information, please visit our **website**.



SPECIES OF WOOD

A

Acacia
Alder
Amboyna burl
Anegré
Anegré, figured
Apple
Ash
Ash burl
Ash, figured
Ash, olive
Ash, olive burl
Avodire
Ayous

B

Bamboo
Beech, figured
Beech, hearted
Beech, spalted
Beech, steamed
Beech, unstained
Bibolo
Birch
Birch burl
Birch, curly
Bosse
Bubinga
Bubinga pommele

C

Camphor burl
Cedar, Lebanon
Cedar, Spanish
Cedar, Western red
Cerejeira
Cerejeira crotch
Chen chen
Cherry, American

Cherry, American figured
Cherry, European
Chestnut
Chestnut burl
Chestnut, horse
Chestnut, smoked
Cocobolo
Cumaru
Curupixa
Curupixa, figured
Cypress

D

Dibeton
Douglas, European
Doussie

E

Ebony,
Ebony, amara
Ebony, white
Elm burl
Elm, Dutch
Elm, grey
Elm, red
Etimoe
Eucalyptus
Eucalyptus burl
Eucalyptus, figured
Eucalyptus pommele
Eucalyptus, smoked

F

Fir

G

Goiabao
Goncalo alves
Grenadillo

H

Hemlock
Hickory
Hornbeam

I

Imbuya
Imbuya burl
Ipe
Iroko
Ironwood

J

Jarrah
Jatoba
Jatoba, figured

K

Kevazinga
Kingwood
Koa
Koto
Koto, figured

L

Larch
Larch, smoked
Laurel burl
Laurel, East indian
Limba
Lime
Louro faya, Silky Oak
Louro preto

M

Madrone burl
Madrone, golden
Mahogany, Caoba
Mahogany crotch

Mahogany, Khaya
Mahogany, Kosipo
Mahogany, Sapele
Mahogany, Sapele pommele
Mahogany, Utile
Makore
Makore, block-figured
Makore, figured
Makore pommele
Mango
Maple, American
Maple, American figured
Maple, birdseye
Maple burl
Maple, heartwood
Maple, quilted
Merbau
Movingui
Movingui, figured
Mutenye
Mutenye, figured
Myrtle burl

O

Oak, American white
Oak, bog
Oak, brown
Oak, brown burl
Oak burl
Oak cluster
Oak, European
Oak, European – CoCo
Oak, European – Shining Grey
Oak, pippy
Oak, red
Oak, smoked
Oak, smoked red
Olive

P

Padauk, African
Padauk, Southeast Asian
Paldao
Palm
Pearwood
Pecan
Pine
Pine, carolina
Pine, cembra
Pine, Oregon
Planetree burl
Planetree, European
Planetree, flaked
Plum tree
Poisonwood
Poplar
Poplar burl
Poplar grisard, silver
Primavera
Purpleheart

R

Redwood
Rosewood, Bahia
Rosewood, Burma
Rosewood, East indian
Rosewood, Eldorado
Rosewood, Madagascar
Rosewood, Santos

S

Sassafras
Satinwood, Ceylon
Satinwood, Ceylon figured
Sen
Spruce
Spruce, knotty
Sucupira

Swiss pearwood
Swiss pearwood, figured
Sycamore, European
Sycamore, European cluster
Sycamore, European figured

T

Tamo
Teak
Thuya burl
Tineo
Tulipwood

V

Vavone burl
Violet (Kingwood)

W

Walnut, American
Walnut, American burl
Walnut, American crotch
Walnut, American figured
Walnut, European
Walnut, European burl
Walnut, European crotch
Walnut, European figured
Walnut, Satin
Walnut, Satin smoked
Wenge
Willow

Y

Yew tree
Yew tree burl

Z

Zebra wood
Zircote

► **Veneer gallery:** In our veneer gallery you'll find photos and information about more than 140 species of wood. All species can be purchased in commercially available variations and in special assortments from Schorn & Groh. www.sg-veneers.com

► **"Veneer Designer" online tool:** Experiment in our veneer gallery to see ideal combinations of veneers, colors and materials and lovely matched veneers.

SCHORN & GROH

Schorn & Groh GmbH

Veneers and lumber

76139 Karlsruhe · Printzstraße 15-17 · Phone +49 721 962450 · Fax +49 721 615560

Spliced veneers / fleece-backed spliced veneers

74927 Eschelbronn · Industriestraße 34 · Phone +49 6226 7857350 · Fax +49 6226 40817

Lumber

79238 Ehrenkirchen · Im Hägle 8 · Phone +49 7633 16727 · Fax +49 7633 12241

Veneers and lumber

89343 Jettingen-Scheppach · Robert-Bosch-Straße 8 · Phone +49 8225 2656 · Fax +49 8225 90201