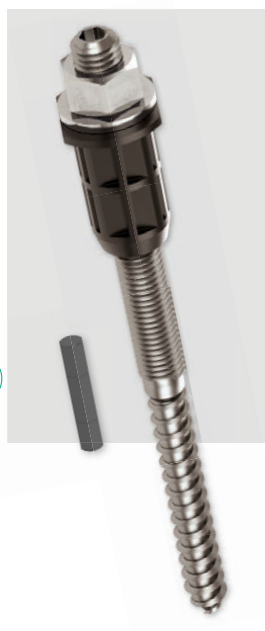




Spaced mounting system

Thermo Proof Wood

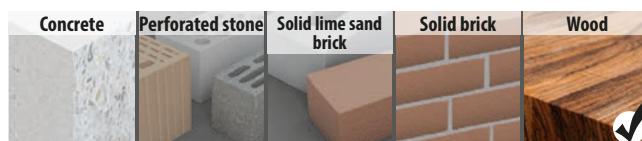


Features

- Heavy-duty spaced mounting system for timber frame construction and wooden buildings with insulation
- Stainless steel hanger bolt
- Simple and rapid installation
- Infinitely adjustable Iso Spacer insulation sleeve
- No pressure load on the façade
- Practically no energy loss

Description & Field of Application

- The Thermo Proof Wood is a heavy-duty spaced mounting system for timber construction or timber frame construction houses
- The Thermo Proof Wood is available in three lengths for the standard insulation thicknesses of 60 mm, 80 mm and 100-120 mm
- The hanger bolt with hexagonal socket drive enables a small fastening structure as required for cassette awnings
- Iso Spacer with large contact surface prevents pressure on the façade
- After installation, the gap between Iso Spacer and plaster should be sealed with an outdoor sealant



Please note: Subject to change without notice. Liability for printing errors and mistakes is excluded.

TOX-Dübel-Technik GmbH

Brunnenstraße 31 ■ 72505 Kraichenwies ■ www.tox.de ■ info@tox.de

Phone +49 (0) 7576 / 9295-0 ■ Fax +49 (0) 7576 / 9295-190

Technical hotline: +49 (0) 7576 / 9295-123 ■ technik@tox.de

toxgermany - Follow us on



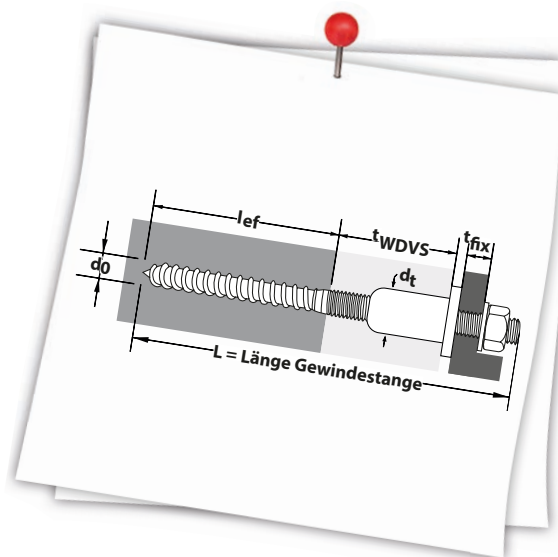
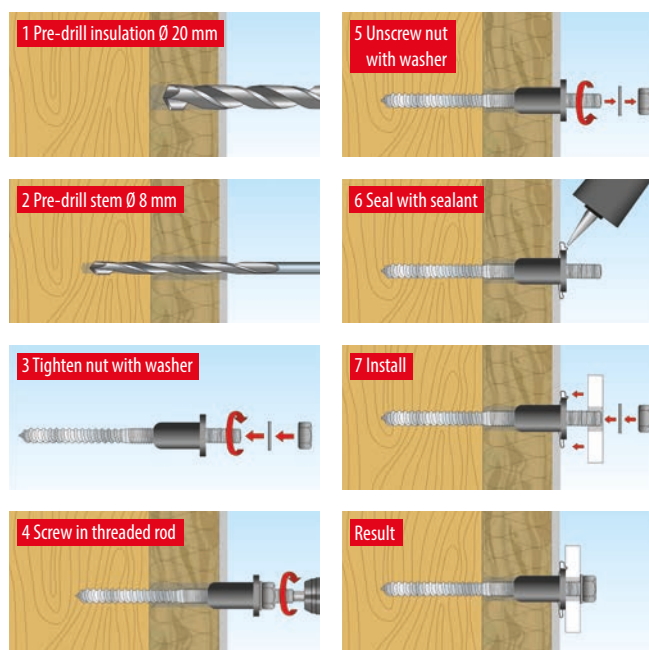
YouTube



Spaced mounting system

Thermo Proof Wood

Processing & Installation



Packaging	Item no.	Type	Content	Drill Ø	Min. anchoring depth	Fixture thickness	Insulation layer thickness	Approval	EAN
	Thermo Proof Wood	per pack	per pack	d_0 / d_1 Ø mm	l_{ef} mm	t_{fix} ≤ mm	t_{etics} mm	Dibt	
	073 671 061	M12x170/60	2x and 1x bit each	8/20	70	20	60	—	 4 049563 049862
	073 671 081	M12x190/80	2x and 1x bit each	8/20	70	20	80	—	 4 049563 049879
	073 671 121	M12x230/100-120	2x and 1x bit each	8/20	90/70	20	100/120	—	 4 049563 049886

TOX-Dübel-Technik GmbH

Brunnenstraße 31 ■ 72505 Krauchenwies ■ www.tox.de ■ info@tox.de

Phone +49 (0) 7576 / 9295-0 ■ Fax +49 (0) 7576 / 9295-190

Technical hotline: +49 (0) 7576 / 9295-123 ■ technik@tox.de

toxgermany - Follow us on



YouTube



Spaced mounting system

Thermo Proof Wood Mini

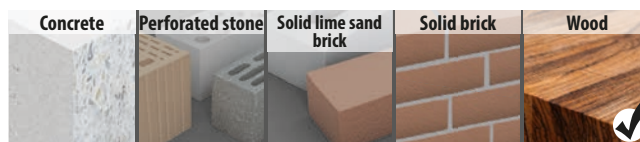


Features

- Specifically for wood frame construction with insulation made of 50-80 mm wood fibre insulation boards
- Simple and rapid installation
- Variable connection options (M10 external thread, M6 internal thread or screws with Ø 3 - 4.5 mm)
- No pressure load on the façade
- Slim head geometry for invisible fastening

Description & Field of Application

- The Thermo Proof Wood Mini is a spaced mounting system for fastening light loads to timber frame construction buildings with 50-80 mm plaster base boards
- Iso Spacer prevents pressure from being applied to the façade
- **When used with M10 installation threaded rod**
Fastening of e.g. downpipe clips
- **When used without installation threaded rod**
Fastening of attachments with M6 threaded screws
- **When used without installation threaded rod and Barracuda 5/25**
Fastening of attachments with screws with Ø 3 - 4.5 mm



Please note: Subject to change without notice. Liability for printing errors and mistakes is excluded.

TOX-Dübel-Technik GmbH

Brunnenstraße 31 ■ 72505 Kraichenwies ■ www.tox.de ■ info@tox.de

Phone +49 (0) 7576 / 9295-0 ■ Fax +49 (0) 7576 / 9295-190

Technical hotline: +49 (0) 7576 / 9295-123 ■ technik@tox.de

toxgermany - Follow us on



YouTube

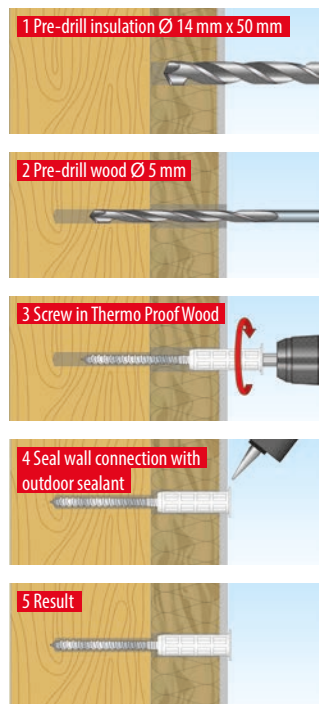


Spaced mounting system

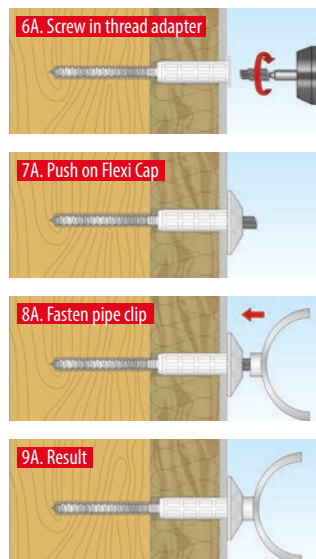
Thermo Proof Wood Mini

Processing & Installation

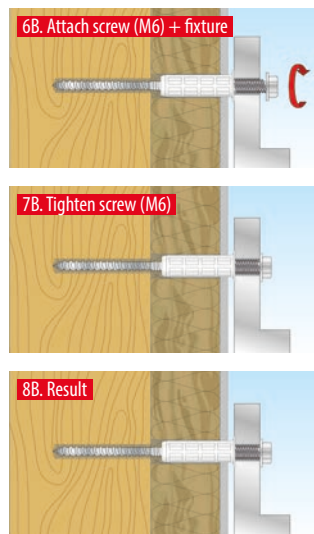
Installation



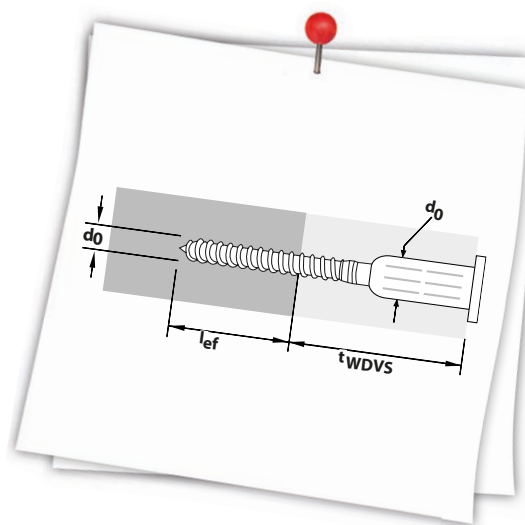
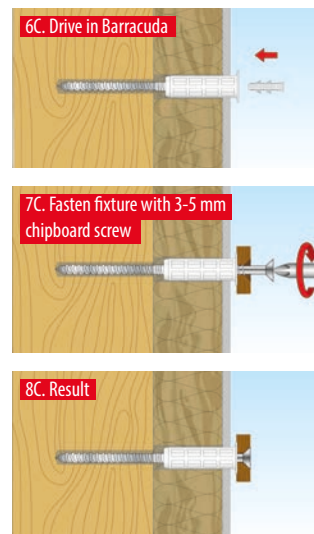
Fastening option A




Fastening option B



Fastening option C



Packaging	Item no.	Type	Content	Size	Drill Ø	Min. anchoring depth	Insulation layer thickness	Approval	EAN
	Thermo Proof Wood Mini	per pack	per pack	Ø x L	d ₀ /d ₁ ø mm	l' mm	t _{etics} mm	Dibt	
	073 600 321	M8x 110/50-80	2x Thermo Proof Wood Mini 2x Barracuda 2x thread adapter 2x Flexi Cap 1x bit	M8x110 5/25 M6/10 M10/40 TX50	5/14	≥ 30	50-80	-	4 049563 049893

Please note: Subject to change without notice. Liability for printing errors and mistakes is excluded.

TOX-Dübel-Technik GmbH

Brunnenstraße 31 ■ 72505 Kraichenwies ■ www.tox.de ■ info@tox.de

Phone +49 (0) 7576 / 9295-0 ■ Fax +49 (0) 7576 / 9295-190

Technical hotline: +49 (0) 7576 / 9295-123 ■ technik@tox.de

toxgermany - Follow us on



YouTube