

Products for the  
**Food and Beverage Industry**

**LinMot®**



## Drives & Motors - Made for the Food and Beverage Industry

LinMot has the right product selection for your demanding food and beverage processing applications. LinMot motors are highly dynamic, provide a very high protection class, and are easy to clean while requiring very low maintenance.

### Linear Modules



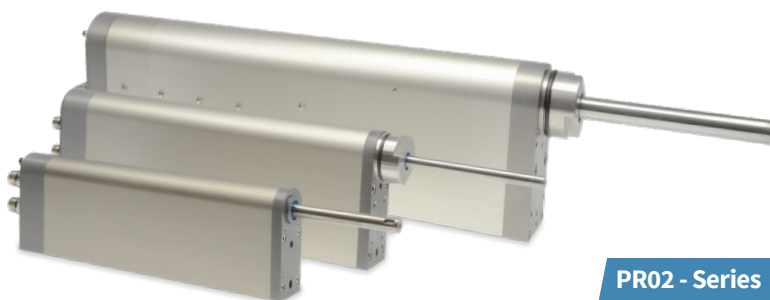
Linear modules with protection class IP64S and stainless steel linear modules with protection class IP69 consisting of a linear guide and an integrated LinMot linear motor. Optionally equipped with the MagSpring® magnetic spring and a pneumatic holding brake. The motors offer stroke lengths up to 680 mm and a peak force up to 572 N.

### Stainless Steel Linear Motors



Motor series in stainless steel (EN 1.4404/ AISI 316L) for washdown applications. The motors are characterised by their hygienic design and the high motor protection class IP69 according to DIN EN 60529. Perfectly suited for «in-place» cleaning processes like CIP and SIP.

### Linear Rotary Motors



Motor series with independently programmable linear and rotary direct drives in a slim housing. Available with the following optional features: built-in precision torque measuring, integrated force sensor, vertical load compensation and hollow shaft. A complete stainless steel version is also available on request.

### Servo Drives



The motors featured here can be controlled by LinMot servo drives of various power classes. Depending on the product series, the control electronics communicate via EtherNet/IP, CIP Sync, EtherCAT (CiA402, SoE), PROFINET, PRO-Flidrive, Sercos III, Powerlink or CANopen.



# Industry

## Food processing with LinMot

LinMot linear motors have been used in the food industry for years. They score here with industry-specific advantages, such as simple integration, flexible programmability, dynamics and hygienic design. The motors can be connected to common control platforms in synchronous operation or simple point-to-point motion. The advantages of servo technology enable the gentle and dynamic processing of food. With the help of stored motion profiles, frequent product changes can be achieved simply by pressing a button. LinMot linear motors are available in stainless steel with a high protection class, meaning they can be cleaned under high pressure and with caustic cleaning solutions.



## Beverage filling with LinMot

Users wishing to combine the advantages of dosing based on flow measurement with those of piston dosing in a rotary filling machine now have clean design LinMot motor options. Using LinMot stainless steel motors, the stroke movement of the filling needles can be mechanically decoupled from the movement of the carousel. Even highly dynamic needle raising applications are possible. Unlike mechanical lifting curves, electrical direct drive motors do not exert any destructive forces on the bearing shafts.



## Closure with LinMot

A new product on the production line every 30 minutes. What was still considered an exception a few years ago is increasingly becoming part of everyday life. Plant engineers solve this challenge by using purely electrically driven PR02 linear rotary motors from LinMot, which consist of separately controlled linear motors and rotary motors. This results in capping solutions for the user that allow the decisive parameters such as stroke, impact force, angle of rotation and torque to be adjusted via the operator interface of the packaging machine.



RS 232



CIP Sync

CANopen

EtherCAT

RS 485



EtherNet/IP

ETHERNET POWERLINK

SERCOS interface

# ALL LINEAR MOTION FROM A SINGLE SOURCE

## Europe / Asia Headquarters

NTI AG - LinMot & MagSpring  
Bodenaeckerstrasse 2  
CH-8957 Spreitenbach  
Switzerland

☎ +41 56 419 91 91

✉ [office@linmot.com](mailto:office@linmot.com)

🏠 [www.linmot.com](http://www.linmot.com)

## North / South America Headquarters

LinMot USA Inc.  
N1922 State Road 120, Unit 1  
Lake Geneva, WI 53147  
USA

☎ 262.743.2555

✉ [usasales@linmot.com](mailto:usasales@linmot.com)

🏠 [www.linmot-usa.com](http://www.linmot-usa.com)

**LinMot®**

