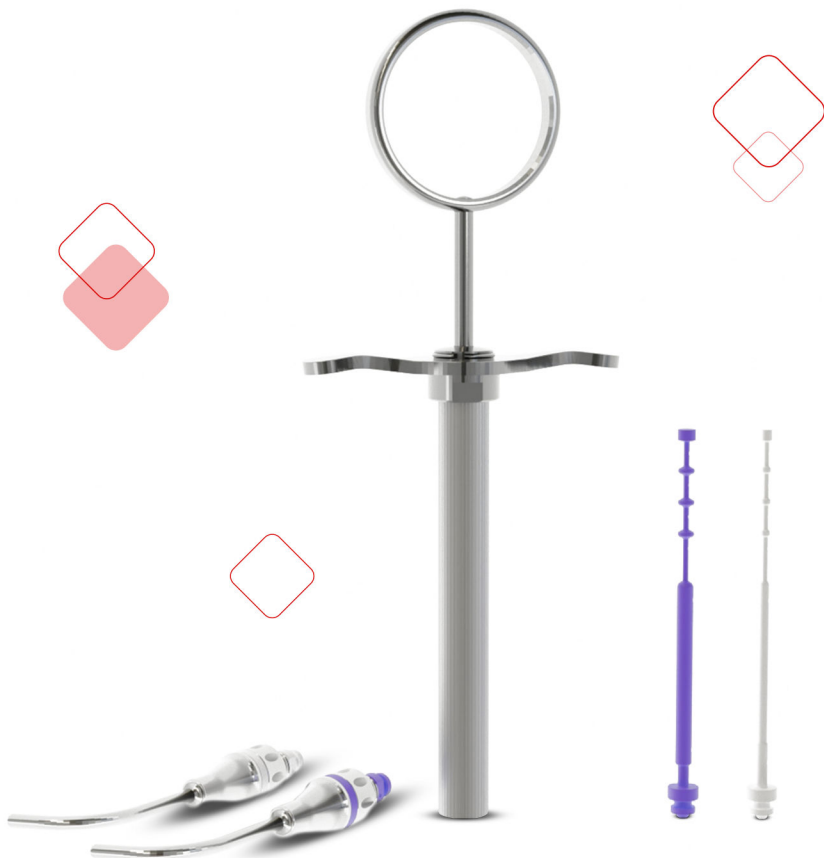


MAP VPT

A new addition to the MAP System® range
for precise material delivery in *Vital Pulp Therapy*



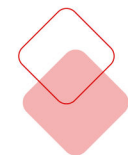
SMART PRODUCTS
FOR ENDO LOVERS

The MAP System® extension is unique regarding its adaptability and compatibility with the most advanced materials for *Vital Pulp Therapy*

+20 years of
expertise in root
canal obturation

Advantages

- Enhanced precision to ensure uniform coverage and minimize material waste.
- An ergonomic design that simplifies handling and reduces stress during delicate procedures.
- Autoclavable and reusable



White : 2.3 mm



Purple: 3.4 mm

Indications

Placement of repair materials during pulp capping procedures.



Discover it !

Clinical case

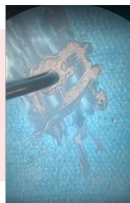
Example of a clinical case by Dr Burçin Arican Alpaya



Assembling



Preparation of the biomaterial



Loading of the needle with MTA



Placement of the repair material into the pulp chamber



Disassembling

References

20288 KIT MAP VPT		1 syringe + 1 white needle + 16 white plungers + 1 cleaning brush + 1 mixing well
20218 MAP VPT WHITE NEEDLE	n°1	1 white needle + 16 white plungers + 1 cleaning brush
20219 MAP VPT PURPLE NEEDLE	n°2	1 purple needle + 16 purple plungers + 1 cleaning brush
20203 MAP VPT WHITE PLUNGERS	n°1	16 white plungers
20204 MAP VPT PURPLE PLUNGERS	n°2	16 purple plungers
20289 MAP VPT CLEANING BRUSH		1 cleaning brush*



SMART PRODUCTS
FOR ENDO LOVERS

Medical Device, Class IIa, CE1639
Produits Dentaires SA
Rue des Bosquets 18, 1800 Vevey
pd-dental.com, Switzerland

*Medical Device, Class I.
TEC CARE
15 Rue de la Fougère, 88150 Chavelot
France