

highlights

unica anterior

in cooperation with **STYLE ITALIANO™**



polydentia
swiss manufacture 

polydentia.ch



The one solution for anterior restorations

Unica anterior matrix

Easy matrixing for a full, anatomical contour of anterior teeth, specifically maxillary incisors and canines. A Polydentia classic!



ADVANTAGES

- Ultra-thin (0.03mm) stainless steel for tight contact surfaces
- Placement wings for ease of positioning
- The only matrix that provides a full, anatomical contour of anterior teeth

Unica minideep anterior matrix

Specifically designed for teeth of smaller dimensions. The malleable, ultra-thin stainless steel makes the matrix contour easily customisable.



ADVANTAGES

- All the benefits of Unica anterior, plus:
- Specifically designed for an even better adaptation on smaller anterior teeth
- Malleable stainless steel for a customisable contour





Unica introkkit anterior

REF 6900

- 20 pcs. Unica anterior matrices
- 20 pcs. Unica minideep anterior matrices
- 40 pcs. myWedge XS
- 40 pcs. myWedge S
- 40 pcs. myWedge M
- 1 pc. myQuickmatrix Forceps



Packs

	12 pcs. Unica anterior matrix	REF 6912
	50 pcs. Unica anterior matrix	REF 6950
	12 pcs. Unica minideep anterior matrix	REF 6911
	50 pcs. Unica minideep anterior matrix	REF 6951



watch
the
video





new! unica proximal

in cooperation with **STYLE ITALIANO™**

focus on proximal
focus on shape



Packs

	100 pcs. Unica Proximal anterior matrix	REF 6913
	50 pcs. Unica Proximal anterior matrix	REF 6914
	100 pcs. Unica Proximal deep anterior matrix	REF 6952
	50 pcs. Unica Proximal deep anterior matrix	REF 6953



watch
the
video



Wedges

interdental
wedges

myWedge interdental wedges

v-shaped
interdental
wedges



ADVANTAGES

- Optimal compressibility and adaptability, stackable if needed
- Ideal adaptation of matrix along the cervical margin
- Grippable head to prevent sliding during placement and removal
- Hollow "v" shape prevents damage to papilla

Packs

	100 pcs. myWedge	Extrasmall (XS)	REF 7101
	100 pcs. myWedge	Small (S)	REF 7102
	100 pcs. myWedge	Medium (M)	REF 7103
	100 pcs. myWedge	Large (L)	REF 7104
	100 pcs. myWedge, assorted	(XS, S, M, L)	REF 7100
	400 pcs. myWedge, assorted	(XS, S, M, L)	REF 7400

Interdental Maple Wood Wedges

Optimal adaptation
of the matrix along
the cervical margin



ADVANTAGES

- Anatomical shape
- Small size (XS) for paediatric dentistry
- Big size (XL) for periodontology

Packs

	200 pcs. Pinky Wood Wedges	11 mm (XS)	REF 5011
	200 pcs. Orange Wood Wedges	11.5 mm	REF 5018
	100 pcs. Wood Wedges	12 mm (S)	REF 5012
	100 pcs. Wood Wedges	13 mm (M)	REF 5013
	100 pcs. Wood Wedges	15 mm (L)	REF 5015
	100 pcs. Wood Wedges	17 mm (XL)	REF 5017
	100 pcs. Wood Wedges, assorted	(XS, S, M, L)	REF 5001



myTines

small, medium, large
and myTines GO

replaceable,
interchangeable and
autoclavable plastic
extremities

myTines small, medium, large and GO

Extremities for myClip 2.0
& myRing Forte



new!

ADVANTAGES

- Replaceable, interchangeable and autoclavable plastic extremities
- Increased stability of the rings
- V-shaped for better positioning over the wedge

Which myTines do I use?

LOW crown HEIGHT teeth



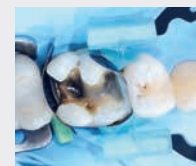
Use
myTines
Small

NORMAL crown HEIGHT teeth



Use
myTines
Medium

WIDE CAVITY preparations/ MISSING cusp

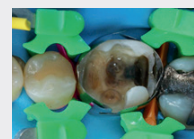


Use
myTines
Large

WIDE cavities MISALIGNED teeth

new!
Use
myTines GO

in cooperation with **STYLE ITALIANO**



Packs

	6 pairs	myTines Small	REF 6304
	6 pairs	myTines Medium	REF 6303
	6 pairs	myTines Large	REF 6306
	6 pairs	myTines GO	REF 6307
	6 pairs	myTines, assorted (Small, Medium, Large)	REF 6310

myQuickmat Forte

starter kit

power up your
restorations

myQuickmat Forte

starter kit

sectional
matrix systems



myRing
Forte



myTimes S, M, L
Replaceable, interchangeable and
autoclavable plastic extremities



myWedge
interproximal
wedge



LumiContrast
Sectional Matrices



QuickmatFLEX
Titanium Sectional
Matrices

ADVANTAGES

- Restorative essentials for the recreation of tight, anatomically-correct contact points and natural contours
- Selected restorative solutions for improved matrix retention and adaptation
- Great choice of sectional matrices to optimise your Class II restorations
- One system for restoring teeth with different crown heights, missing cusps and wide cavity preps



watch
the
video



REF 6883

- 2 pcs. myRing Forte,
- 2 pairs myTimes Small (S),
- 1 pair myTimes Medium (M),
- 1 pair myTimes Large (L),
- 10 pcs. QuickmatFLEX Sectional Matrices, Premolar 0.03mm / 5mm,
- 10 pcs. QuickmatFLEX Sectional Matrices, Molar 0.03mm / 6.4mm,
- 5 pcs. QuickmatFLEX Sectional Matrices, Molar Deep 0.03mm / 6.4mm + Ext.,
- 10 pcs. LumiContrast Sectional Matrices, Premolar 0.04mm / 5mm,
- 10 pcs. LumiContrast Sectional Matrices, Molar 0.04mm / 6.4mm,
- 5 pcs. LumiContrast Sectional Matrices, Molar Deep 0.04mm / 6.4mm + Ext.,
- 10 pcs. myWedge, Extrasmall (XS),
- 10 pcs. myWedge, Small (S),
- 10 pcs. myWedge, Medium (M),
- 10 pcs. myWedge, Large (L)

Clinical cases with myQuickmat Forte starter kit



Courtesy of Dr. Katherine Losada, Switzerland



Courtesy of Dr. Osama Shalaan, Palestine



Quickmat FLEX

sectional matrices

in cooperation with **STYLEITALIANO™**

enjoy
the elastic
memory



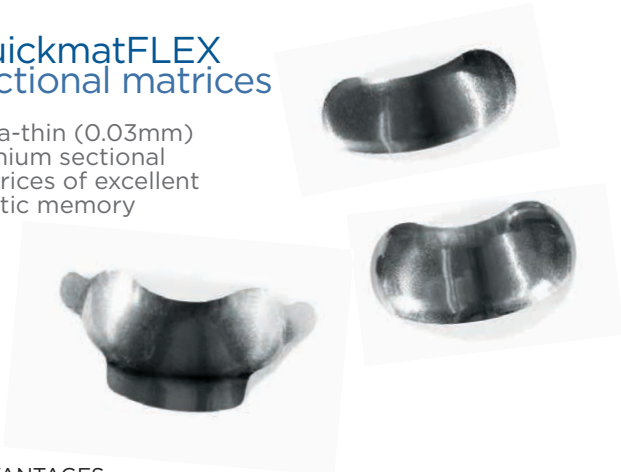
Lumi Contrast

sectional
matrices

low reflection
and high contrast

QuickmatFLEX sectional matrices

Ultra-thin (0.03mm)
titanium sectional
matrices of excellent
elastic memory



ADVANTAGES

- Ultra-thin 0.03mm. Facilitated insertion in narrow interproximal spaces, allowing to obtain anatomically correct restorations and tight contact points
- Excellent resilience and elastic memory. Matrices resist deformation thanks to their elastic spring-back

LumiContrast sectional matrices

dark color

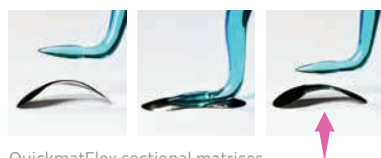


ADVANTAGES

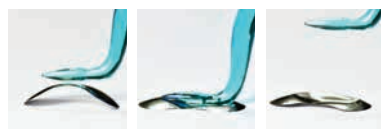
- Low reflection and high contrast
- Ideal for loupes with light
- A must-have with dental microscopes
- 2 thickness measurements: 0.025mm e 0.04mm

Excellent
elastic memory
and resilience

comparison between
QuickmatFLEX
sectional matrices and
stainless steel
sectional matrices



QuickmatFlex sectional matrices



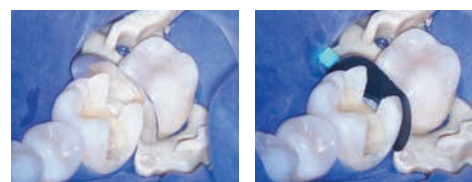
Stainless steel sectional matrices



watch
the
video

Packs

	100 pcs. QuickmatFLEX sectional matrices Premolar 0.03mm/5mm	REF 6785
	100 pcs. QuickmatFLEX sectional matrices Molar 0.03mm/6.4mm	REF 6786
	50 pcs. QuickmatFLEX sectional matrices Molar Deep 0.03mm/6.4mm + Ext.	REF 6787



Without LumiContrast

With LumiContrast

Thanks to the mat, blue surface, this matrix is characterized by a low reflection, with consequently no blinding effect. Moreover a high contrast between dark colour/white teeth is given, allowing for a precise identification of the working area.

Packs

	Height	Thickness	
70 pcs. Premolar	5 mm	0.025 mm	REF 6735
70 pcs. Molar	6.4 mm	0.025 mm	REF 6736
70 pcs. Premolar	5 mm	0.04 mm	REF 6705
70 pcs. Molar	6.4mm	0.04 mm	REF 6706
50 pcs. Molar Deep	6.4mm+Ext.	0.025 mm	REF 6756
50 pcs. Molar Deep	6.4mm+Ext.	0.04 mm	REF 6746

Junior LumiContrast

70 pcs.	3.75 mm	0.04 mm	REF 6708
---------	---------	---------	----------

my junior kit



the first sectional
matrix system for
paediatric dentistry



myClip junior

All in one paediatric
sectional matrix ring
with integrated
forceps



ADVANTAGES

- All in one sectional matrix ring.
No need for intimidating forceps
- Long-lasting ring, made out of Nickel Titanium
- Optimal separation force to achieve
flawless contact surfaces
- Quick, easy, one-hand ring positioning
- Autoclavable and replaceable plastic
myTines Junior extremities

myRing junior

Paediatric sectional matrix
ring that fits a wide
variety of clinical
situations



ADVANTAGES

- Ideal size to fit on deciduous teeth in children's mouth
- Long-lasting ring made out of Nickel Titanium
- Optimal separation force to achieve flawless
contact surfaces
- Excellent matrix adaptation and retention
- Autoclavable and replaceable plastic
myTines Junior extremities

myJunior kit

REF 6330



- | | | |
|----|-------|--|
| 1 | pc. | myClip Junior |
| 1 | pc. | myRing Junior |
| 5 | pairs | Cylindrical Silicone Tubes |
| 5 | pairs | myTines Junior |
| 40 | pcs. | LumiContrast Sectional Matrices, Premolar 0.04mm / 5mm |
| 40 | pcs. | Junior LumiContrast Sectional Matrices, 0.04mm / 3.5mm |
| 50 | pcs. | Quickmat Sectional Matrices, Premolar 0.04mm / 5mm |
| 50 | pcs. | Junior Quickmat Sectional Matrices, 0.04mm / 3.5mm |
| 50 | pcs. | Pinky Wood Wedges, 11mm (XS) |
| 40 | pcs. | Wood Wedges, 12mm (S) |
| 50 | pcs. | myWedge XS |
| 40 | pcs. | myWedge S |



Dr Marina Papachroni
Greece

Dr Martina Sabová
Slovakia

QuickmatFIT

anatomically enhanced sectional matrices

new!

accurate
natural contour

QuickmatFIT

Enhanced natural curvature: 3D contoured matrix ensures anatomically accurate restorations

ADVANTAGES







- Three anatomical shapes to cover all type of Class II posterior restoration
- Especially indicated in case of wide interproximal spaces and large cavities
- Easy to handle. The placement tabs afford easier and faster matrix insertion and removal
- Time-saving solution. Restored anatomy requires fewer finishing steps
- Thin, rigid but burnishable
- 0.04mm thickness

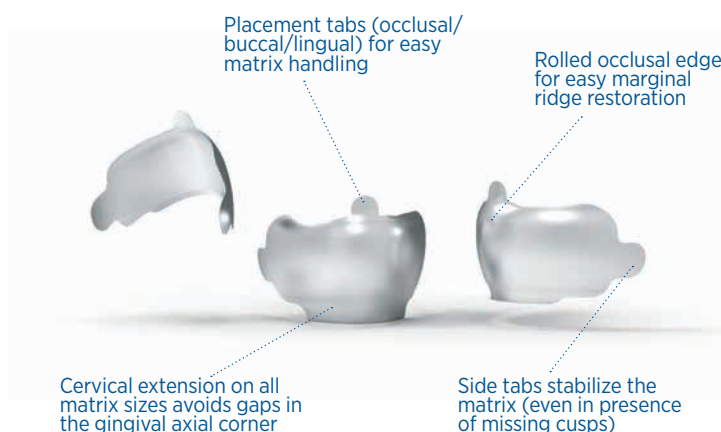


for more
information



Packs

	50 pcs. QuickmatFIT anatomical sectional matrices, Premolar 0.04mm	REF 5805
	50 pcs. QuickmatFIT anatomical sectional matrices, Molar 0.04mm	REF 5806
	25 pcs. QuickmatFIT anatomical sectional matrices, Molar deep 0.04mm	REF 5846
	100 pcs. QuickmatFIT anatomical sectional matrices, Premolar 0.04mm	REF 5835
	100 pcs. QuickmatFIT anatomical sectional matrices, Molar 0.04mm	REF 5836
	50 pcs. QuickmatFIT anatomical sectional matrices, Molar deep 0.04mm	REF 5856



Side view of the restoration before finishing and polishing showing the accurate morphological reconstruction afforded by QuickmatFIT matrices

Comparison - Matrix adaptation on teeth model



LumiContrast - sectional matrix indicated in case of standard interproximal spaces and cavities



QuickmatFIT - anatomical sectional matrix indicated in case of wide interproximal spaces and large cavities

Clinical cases with QuickmatFIT

class II adjacent cavities on 1st and 2nd molars | Courtesy of Dr David Gerdolle, Switzerland

