

METABIOMED PRODUCT

# Catalog

---



# Contents

## ENDODONTICS

### Root Canal Filling

- 03 Gutta Percha Points
- 05 Absorbent Paper Points

### Root Canal Medicaments

- 07 Metapex Plus
- 09 Metapaste Plus

### Root Canal Sealer

- 11 ADSEAL Plus
- 13 CeraSeal

### EDTA

- 16 MD-ChelCream
- 17 MD-Cleanser

### Core Build up

- 19 NexCore

## DENTAL EQUIPMENT

### Endodontic File

- 23 Aurum Blue
- 27 Aurum G
- 28 Aurum Pro

### Apex Locator

- 29 EQ-Pex
- 31 i-ROOT
- 33 ROOTOR

### Endo Motor

- 35 EQ-M
- 37 ES-100

### Irrigation Device

- 39 EQ-S

### Obturation Device

- 41 EQ-V

### Plugger

- 43 EQ Condenser

### Curing light

- 45 Glare

## RESTORATIVE

### Bonding / Etchant

- 49 Meta P&Bond
- 50 Meta Etchant

### Liner

- 51 Biner LC

### Hybrid Composite

- 53 Nexcomp
- 55 EZFil
- 57 Nexcomp Flow

### Temporary Cavity Filling

- 59 MD-Temp Plus

### Temporary Cement

- 61 NETC

### Permanent Cement

- 63 Metacem

### Impression Material

- 65 Imflex
- 67 Imflex Bite

## BONE GRAFT

### Synthetic Bone

- 69 BoneMedik-DM Bone
- 71 Sorbone





## ENDODONTICS

### Root Canal Filling

- 04 Gutta Percha Points
- 06 Absorbent Paper Points

### Root Canal Medicaments

- 08 Metapex Plus
- 10 Metapaste Plus

### Root Canal Sealer

- 12 ADSEAL Plus
- 14 CeraSeal

### EDTA

- 17 MD-ChelCream
- 18 MD-Cleanser

### Core Build up

- 20 NexCore

*Saving  
the Natural  
Tooth*



# Gutta Percha Points



## SHELF LIFE

4years

## FEATURE & BENEFIT

- Various tapers & sizes  
It is applicable to various shapes of root canals
- Length marked  
Checking working length is available as a supportive option
- Excellent radiopacity
- Suitable with various  
CWC,Lateral, One cone working length is available as a supportive option

## SIZE & SPECIFICATION

- 02 Taper  
10~140
- 04,06 Taper  
15~80
- 08 Taper  
15~40

### - Non Standard

- Non-Standard : XF, FF, MF, F, FM, M, ML, L, XL
- Japanese Type : JF-S, JF-M, JF-L, JS, JM, JL, JL-M, JX-L
- DE Trey Type : XX-F, X-F, Fine, Medium
- Protaper Size (F1 ~ F5)

## ORDER INFORMATION

Taper \ Size	10	15	20	25	30	35	40	45	50	55	60	70	80	90	100	110	120	130	140	
02(120)	○	○	○	○	○	○	○	○	○	○	○									
04(60)		○	○	○	○	○	○	○	○	○	○	○	○							
06(60)		○	○	○	○	○	○	○	○	○	○	○	○							
08(60)		○	○	○	○	○	○													

**LENGTH MARKED**



**APPLICATION**

- Permanent root canal filling

**PACKAGING**

**6 VIAL PACKING SQUARE**



- Code  
P.31
- Regular Packing Points  
GP 60/120 Points
- Dimension  
84 x 51 x 16mm

**6 VIAL PACKING ROUND**



- Code  
P.31
- Regular Packing Points  
GP 60/120 Points
- Dimension  
84 x 51 x 16mm

**SLIDING TYPE DISPENSER**



- Code  
P.71
- Regular Packing Points  
GP 60/120 Points
- Dimension  
70 x 45 x 12mm

**4 COMPARTMENT DISPENSER**



- Code  
P.51
- Regular Packing Points  
GP 60/100 Points
- Dimension  
77 x 45 x 13mm

**ENDO ORGANIZER**



- Code  
P.11 \* Spill Proof 12 Compartments
- Regular Packing Points  
GP 240 Points
- Size  
ISO 15 ~ 80 \* Color Coded Available

# Absorbent Paper Points

Sterilized Absorbent Paper Points



## SHELF LIFE

5years

## FEATURE & BENEFIT

- **Highly absorbent**  
Less consumption amount
- **Length marked**  
Checking working length is available as a supportive option
- **Various sizes & Packages**
- **Color coded**

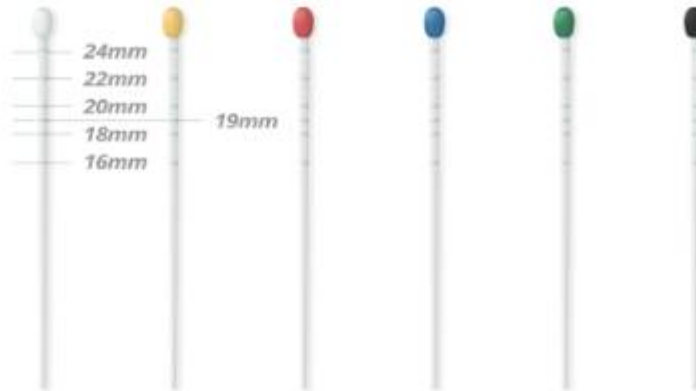
## SIZE & SPECIFICATION

- **02 Taper**  
10~140
- **04,06 Taper**  
15~80
- **08 Taper**  
15~40
- **Non Standard**
  - Non-Standard : XX-Fine, X-Fine, Fine, Medium, Coarse, X-Coarse
  - Protaper Size : F1~F5

## ORDER INFORMATION

Taper \ Size	10	15	20	25	30	35	40	45	50	55	60	70	80	90	100	110	120	130	140
02(120)	○	○	○	○	○	○	○	○	○	○	○	○	○	○	○	○	○	○	○
04(60)		○	○	○	○	○	○	○	○	○	○	○							
06(60)		○	○	○	○	○	○	○	○	○	○								
08(60)		○	○	○	○	○	○												

**LENGTH MARKED**



**APPLICATION**

- Drying root canals before obturation
- Cleaning root canals

**PACKAGING**

**6 VIAL PACKING SQUARE**



- Code  
P.31
- Regular Packing Points  
PP 60/200 Points
- Dimension  
84 x 51 x 16mm

**6 VIAL PACKING ROUND**



- Code  
P.31
- Regular Packing Points  
PP 60/200 Points
- Dimension  
84 x 51 x 16mm

**SLIDING TYPE DISPENSER**



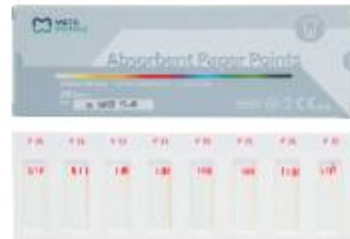
- Code  
P.71
- Regular Packing Points  
PP 60/200 Points
- Dimension  
70 x 45 x 12mm

**ENDO ORGANIZER**



- Code  
P.11 \* Spill Proof 12 Compartments
- Regular Packing Points  
PP 400 Points
- Size  
ISO 15 ~ 80 \* Color Coded Available

**SLIDING TYPE DISPENSER**



- Code  
P.61
- Regular Packing Points  
180 / 200 Points
- Dimension  
163 x 54 x 11mm \* Available for PP only



# Metapex Plus

Calcium Hydroxide Temporary Filling Material



## SHELF LIFE

2years

## FEATURE & BENEFIT

- **Antibacterial effect**  
acts as intracanal medicament
- **Premixed type**  
Quick and easy treatment with minimal waste & clean up
- **Excellent Radiopacity (Iodoform)**  
Easy to check the presence of residue
- **Disposable tips**  
prevents cross-contamination

## APPLICATION

- **Root Canal Cleaning and Shaping**
- **Weeping Canal**
- **Root Canal Filling for deciduous teeth**
- **Temporary Root canal filling**
- **Formation of a hard tissue barrier (Apexification)**

## ORDER INFORMATION

- Metapex plus × 1 Syringe with 20 tips
- Metapex plus × 2 Syringes with 20 tips

**COMPONENTS**

- 2.2g paste In syringes
- 2 syringe packing available



- Disposable Tips (20tips)
- One ring rotator for direction control of the tip

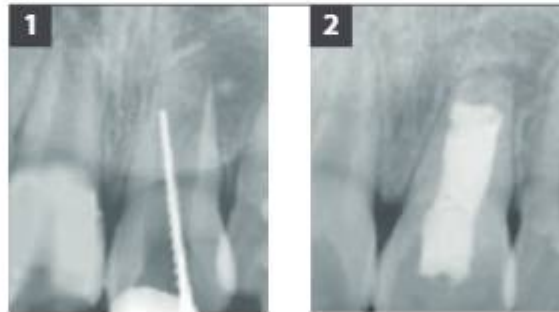


**DIMENSION / WEIGHT**

- 228 x 61 x 22mm / 46g

**CLINICAL CASE**

**Apexification**



1. Pulp necrosis on #21 of 8year-old boy took place by trauma.
2. About 1 year after Metapex treatment

**Root Resorption**



1. Internal resorption on distolingual root
2. Root Perforation by inflammatory resorption

# Metapaste Plus

Water-based Calcium Hydroxide Temporary Filling Material



**SHELF LIFE**  
2years

## FEATURE & BENEFIT

- **Antibacterial effect**  
acts as intracanal medicament
- **Water Soluble**  
Easy to clean and remove
- **Excellent Radiopacity (Barium Sulfate)**  
Easy to check the presence of residue
- **Premixed type**  
Quick and easy treatment with minimal waste & clean up
- **Disposable tips**  
prevents cross-contamination

## APPLICATION

- **Root Canal Cleaning and Shaping**
- **Weeping Canal**
- **Root Canal Filling for deciduous teeth**
- **Temporary Root canal filling**
- **Formation of a hard tissue barrier (Apexification)**

## ORDER INFORMATION

- Meta paste Plus × 1 Syringe with 20 tips
- Meta paste Plus × 2 Syringes with 20 tips

**COMPONENTS**

- 2.2g paste In syringes
- 2 syringe packing available



- Disposable Tips (20tips)
- One ring rotator for direction control of the tip



**DIMENSION / WEIGHT**

- 228 × 61 × 22mm / 46g

**CLINICAL CASE**

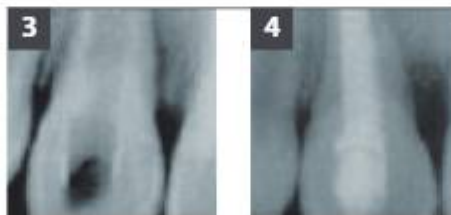
**Apexification**



**1. BEFORE TREATMENT**

Large apical foramen with an incomplete apex Note the root. resorption on the lateral surface

**2. METAPASTE FILLING**



**3. THREE MONTHS LATER**

after removal of the paste. it shows a formation of the apical barrier

**4. SIX MONTHS LATER**

Excellent healing without further root resorption

**To locate real apical foramen**



**1.** About 1-2 months after, X-ray shows exactly where the real apical foramen is.

# ADSEAL Plus

Resin based Root canal sealer



## SHELF LIFE

2years

## FEATURE & BENEFIT

- Paste - Paste type  
Easy to use (Dispense tip, auto-mix tip)
- Hermetic sealing ability  
increasing success probability of root canal treatment
- Nonstaining to teeth(Bismuth free)
- Not dissolve in tissue fluids
- Excellent biocompatibility
- Good radiopacity

## APPLICATION

- Permanent root canal sealing

## DIMENSION / WEIGHT

- 55 × 180 × 40mm / 98g

## COMPONENTS

- 13.5g dual syringe
  - Base 9g *Epoxy resin, Calcium phosphate*
  - Catalyst 4.5g *Amines, Bismuth subcarbonate*



- Spatula
- Mixing Pad
- Dispense Tip

## ORDER INFORMATION

- ADSEAL Plus 13.5g
- Mixing pad
- Spatula, Dispense Tip & Cap
- ADSEAL Plus IFU

# CeraSeal

Calcium Silicate-based Bioceramic Root Canal Sealer

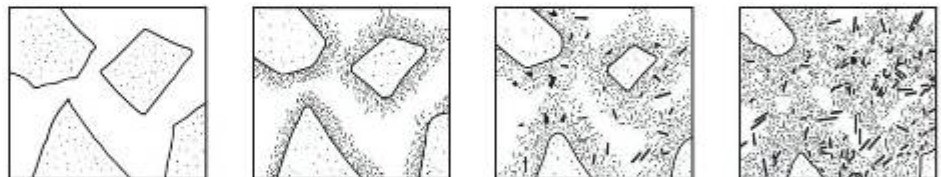


**SHELF LIFE**  
2years

## FEATURE & BENEFIT

### - It's Calcium Silicate!

Calcium silicate produces CAH(Calcium Aluminate Hydrate) gel and CSH(Calsium Silicate Hydrate) gel by absorbing the moisture from surrounding tissues in the root canal and some crystallization of Calcium Hydroxide ( $\text{Ca}(\text{OH})_2$ )



### - Antimicrobial effect

suppress the bacteria in the root canal

### - Non toxic (High cell viability)

Healing effect, harmless to human

### - High volumetric stability (no shrinkage, expansion)

Hydraulic condensation (One cone technique) is possible thanks to hermetic sealing

### - High flowability

All aspects of canal anatomy can be reached, which wasn't possible with CWC

### - Appropriate setting time (3.5h)

prevents washout phenomenon

### - Premixed Syringe Type

## SPECIFICATION

- Setting time 3.5 hour    - pH >12    - Radiopacity >8mmAl    - Flowability >23mm

**COMPONENTS**

- 2g Pre-mixed syringe x 1EA



- Intra canal tips x 10EA



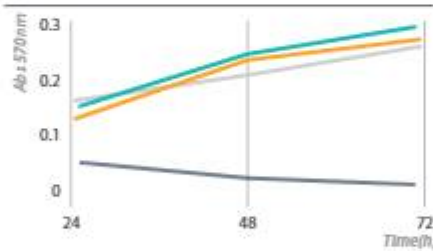
- Drying root canals before obturation  
 - Cleaning root canals

**APPLICATION**

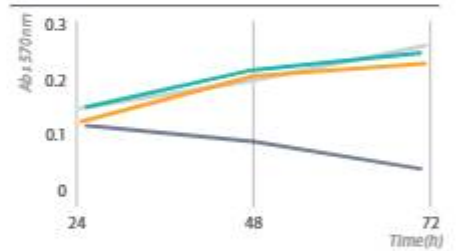
- Permanent root canal sealing
- Permanent root canal filling after pulp gangrene and temporary filling treatment

**TEST RESULT**

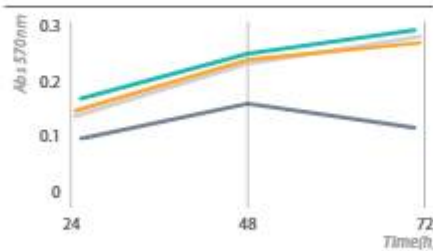
**Non diluted**



**Diluted 1:2**



**Diluted 1:4**



— CeraSeal      — Control  
— Company B      — Company M

This test result shows that even if CeraSeal has high pH(12.73), it has the excellent biocompatibility. So it's harmless to human body, also it has excellent biocompatibility understandably.

**ORDER INFORMATION**

- 2g x Syringe 1ea, Disposable Tip 10ea



# MD-Chelcream

EDTA Cream



## SHELF LIFE

2years

## FEATURE & BENEFIT

- Removal of Inorganic substances with chelation (EDTA-CA 2<sup>+</sup> 19%)
- Acts as lubricant
- Smear layer removal

## APPLICATION

- Root canal preparation with files and reamers
- Removal of calcification in the root canal
- For narrow canals in posterior teeth
- Smear layer removal

## COMPONENTS

• MD-Chelcream 7g(5.4ml) × 2

• Disposable tips × 10ea



## DIMENSION / WEIGHT

186 × 45 × 30mm / 59g

## ORDER INFORMATION

- 7g x 2 syringes, Disposable Tip 10ea



# MD-Cleanser

EDTA solution



## SHELF LIFE

2years

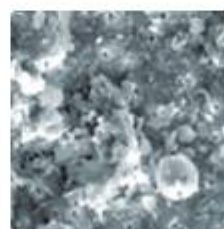
## FEATURE & BENEFIT

- Removal of inorganic substances with chelation (EDTA-CA 2<sup>+</sup> 19%)
- Acts as lubricant
- Smear layer removal

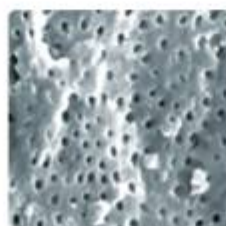
## APPLICATION

- Removal of calcification in the root canal
- For narrow canals in posterior teeth
- Smear layer removal

## CLINICAL CASE



- Application Method
- After root canal preparation



- After MD-Cleanser application(x1000)
- After MD-Cleanser application(x7000)

**COMPONENTS**

- MD-Cleanser: 100ml



- 1cc syringe



- Disposable tips x 3ea



**ORDER INFORMATION**

- 100ml, 1 Syringe, Disposable Tip 3ea

**DIMENSION / WEIGHT**

106 x 50 x 53mm / 138g

**New**  
➤ Get better result with EQ-S  
Go to page 39



# Nexcore

Dual-cured core build-up composite



## SHELF LIFE

2years

## FEATURE & BENEFIT

- **Similar elasticity to Dentin**  
Endure controlled substance removal a precise preparation margin
- **High Strength**
- **Various Shade**  
Compatible with ceramic, fiber and metal
- **Auto-mix delivery system**  
Quick and easy treatment available with minimal waste & clean up
- **Dual curing system**  
Reducing polymerization failure of composite with reliable setting

## APPLICATION

- **Post adhesions and core build-up in restoration**

## PHYSICAL PROPERTIES

- **Working time**  
1:50 ~ 2:20 min
- **Setting time**  
4:00 ~ 5:00 min (Self-cure)  
20 ~ 40 sec (Light-cure)
- **Flexural strength (light curing)**  
115.52 Mpa

**COMPONENTS**

**NexCore Dual Syringe**



- NexCore Dual Syringe 9g x 2ea  
 Shade: Tooth, White, Blue



- Automix-tp 20ea
- Intraoral-tp 10ea



- Endo-tp 10ea

**NexCore Dual Syringe Refill**

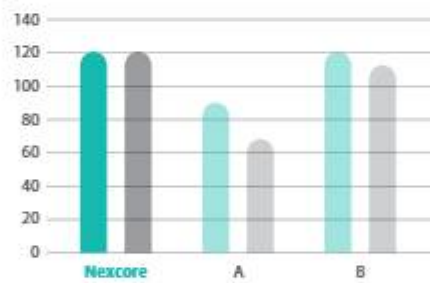


- NexCore Dual Syringe 9g x 1ea  
 Shade : Tooth, White, Blue

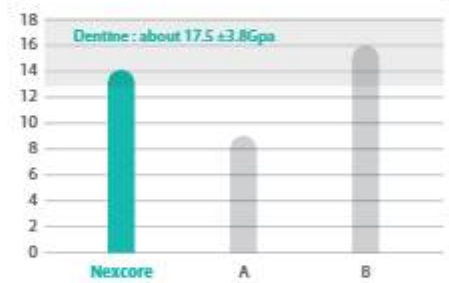
- Automix-tp 3ea

**PHYSICAL PROPERTIES**

**Flexural strength (Mpa)**



**Flexural modulus (Gpa)**



**Radio-Opacity**







## DENTAL EQUIPMENT

### Endodontic File

- 24 Aurum Blue
- 28 Aurum G
- 29 Aurum Pro

### Apex Locator

- 30 EQ-PEX
- 32 I-ROOT
- 34 ROOTOR

### Endo Motor

- 36 EQ-M
- 38 ES-100

### Irrigation Device

- 40 EQ-S

### Obturation Device

- 42 EQ-V

### Plugger

- 44 EQ Condenser

### Curing light

- 46 Glare

*Saving  
the Natural  
Tooth*





# Aurum Blue

Controlled Memory File



## FEATURE & BENEFIT

### - Martensitic Alloy

Aurum Blue stays as Martensitic form at room temperature due to special heat-treatment. It gives super flexibility, by which Aurum Blue has strong resistance for cyclic fatigue.

### - Electro-polished

Roughness of surface can cause micro cracks ending up fractures. Electro-Polishing removes roughness and reduces possibilities of fracture caused by micro cracks

## APPLICATION

### - Root Canal Cleaning and Shaping

## CLINICAL CASE



Aurum Blue files allow me to work efficiently and safely at the same time. Their cross-sectional design combined with the NiTi controlled memory alloy is the perfect combination for providing cutting efficiency, great flexibility and outstanding fatigue resistance.

- Dental Tribune Article

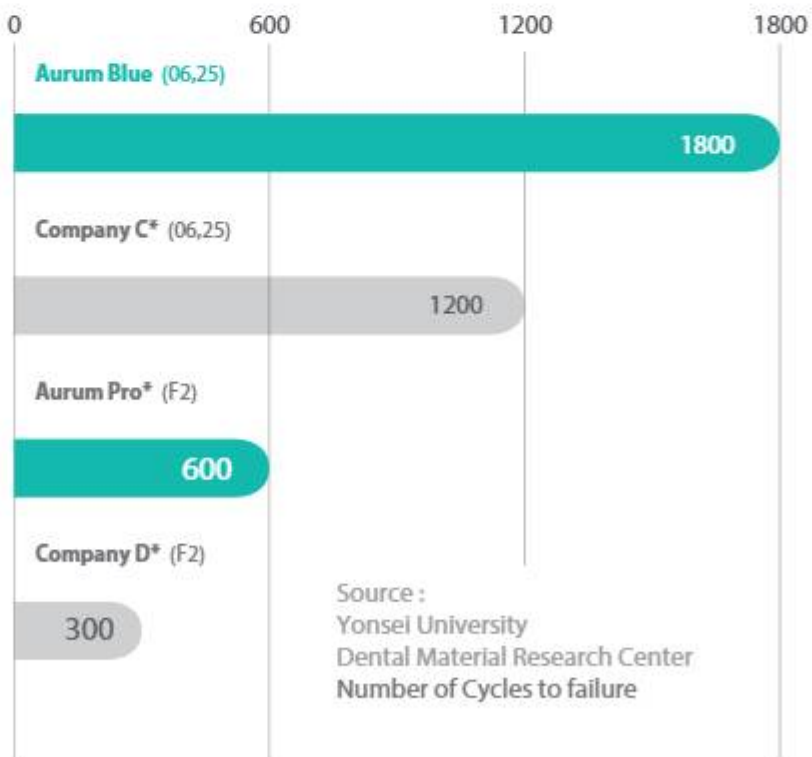
ORDER INFORMATION

Aurum Blue, 4pcs/pack

Contents	ID	Size	Length			
			17mm	21mm	25mm	31mm
Sequence Pack (20/.10, 20/.04, 25/.06, 35/.04)				○	○	○
CF (20/.10)		20	○			
T1 (20/.04)	●	20		○	○	○
T1.5 (25/.04)	●	25		○	○	○
T2 (25/.06)	●	25		○	○	○
T2.5 (30/.04)	●	30		○	○	○
T3 (35/.04)	●	35		○	○	○
T4 (40/.04)	●	40		○	○	○
T4.5 (45/.04)	○	45		○	○	○

COMPARISON

Extremely resistant to fracture



---

### Cross-section, Efficient and Safe

---



#### Convex Triangular Shape

- Size above 25/.06
- Resistant Torsional Stress while maintaining Flexibility



#### Square Shape

- Size below 25/.04
- Excellent Centering, Resistant to fracture

---

### Sem(Aurum Blue)

---



Clean surface of Aurum Blue



Non-cutting tip





# Aurum G

Glide Path File



## FEATURE & BENEFIT

### - Increased flexibility

Advanced heat treatment technology gives it enhanced flexibility and it offers you many advantages over manual stainless steel files

### - Surface Treatment

It results in significantly reduced fractures caused by micro cracks

## APPLICATION

### - Root Canal Cleaning and Shaping

### - Establishing a glide path

## ORDER INFORMATION

### Aurum G, 6pcs/pack

Contents	Length		
	21mm	25mm	31mm
Sequence Pack (G13 3pcs, G17 3pcs)	○	○	○
G13 (13/.025)	○	○	○
G17 (17/.025)	○	○	○

# Aurum Pro

Endodontic File



## FEATURE & BENEFIT

- **Conservative System**  
Its less taper (5%) leads to accomplish conservative cutting. Dentin structure can be saved more.
- **The system you trust**  
the most commonly used rotary file system
- **Incredible strength**  
It has improved resistance to cyclic fatigue of the file.

## APPLICATION

- Root Canal Cleaning and Shaping

## ORDER INFORMATION

### Aurum Pro, 6pcs/pack

Contents	Length			
	19mm	21mm	25mm	31mm
Sequence Pack (SX, S1, S2, F1, F2, F3)		○	○	○
SX(19)	○			
S1(18.5)		○	○	○
S2(20)		○	○	○
F1(20)		○	○	○
F2(25)		○	○	○
F3(30)		○	○	○

# EQ-PEX

Electronic Apex Locator



## ADVANTAGES

- Best accuracy in any condition in the root canal  
(Dry, bleeding, wet, saline, EDTA, NaOCl or Chlorhexidine Etc.)
- Simultaneous measurement of visual and sound
  - "Light Guide" on file holder B & main button on EQ-M when connecting
- Simple and easy to use
- Auto power-off for saving battery life
- Stable and reliable measurement result

## COMPONENTS

- EQ-Pex main unit 1EA
- Lip hook 5EA
- File holder A
- AC/DC Adapter
- Probe cord
- File holder gender
- File holder B
- Power cord

**SPECIFICATION**

Item		Description
Motor handpiece	Rated Input	3.6V / 1,900mAh (Lithium-ion-battery)
	Dimensions	90 X 75.4 X 73.6mm
	Weight	184g
	Operation Mode	Continuous operation
AC/DC Adapter	Input voltage	100 – 240V, 50 – 60Hz
	Output voltage	
	Output current	





# i-ROOT

Electronic Apex Locator



## FEATURE & BENEFIT

- Best accuracy In any root canal condition  
(Dry, bleeding, wet, saline, EDTA, NaOCl, Chlorhexidine etc...)
- Simultaneous visual and sound measurement

## APPLICATION

- Measuring the working length of the tooth during the endodontic treatment

## SPECIFICATION

- Battery  
Lithium-Ion, DC8.2V 2200mAh
- AC-Adapter  
AC100~240V (50~60Hz)
- Continuous use  
60hours
- Weight  
390g

**COMPONENTS**

- I-ROOT main unit × 1EA
- Probe cord × 1EA
- File holder A × 1EA
- File holder B × 2EA
- Lip Clips × 5EA



# ROOTOR

Electronic Apex Locator



## FEATURE & BENEFIT

- **Best accuracy In any root canal condition**  
(Dry, bleeding, wet, saline, EDTA, NaOCl, Chlorhexidine etc...)
- **Simultaneous visual and sound measurement**

## APPLICATION

- **Measuring the working length of the tooth during the endodontic treatment**

## SPECIFICATION

- **Rated Input**  
DC 4.5V (Alkaline battery size AAA DC1.5V × 3EA)

**COMPONENTS**

- ROOTOR main unit × 1EA
- Probe cord × 1EA
- File holder A × 1EA
- File holder B × 2EA
- Lip Clips × 5EA



# EQ-M

Cordless Endodontic Motor



## FEATURE & BENEFIT

- Patented unique movement ART motion (Alternative Rotation Technique): Increasing file fracture resistance by 25%
- Swiss-made motor: guarantee high performance and up to six times x of the motor's life compared to Chinese motor
- Much less noise and vibration
- Light weight: 130g (Including battery and contra angle)
- Providing 2 high-quality extra batteries
- "Light Guide" function when connecting EQ-Pex (Apex locating available)

## COMPONENTS

- EQ-M motor hand piece 1EA
- Hand Charger x 1EA
- Contra angle x 1EA
- AC Adapter x 1EA

**SPECIFICATION**

Item		Description
Motor handpiece	Speed Range	100 – 1,000 RPM
	Torque Range	1.0 – 4.0 Ncm
	Rated Input	3.7Vdc / 800mAh (Lithium-ion-battery)
	Dimensions	202 X 28 X 28mm (including battery, contra angle)
	Weight	130g (including battery, contra angle)
	Operation Mode	Continuous operation
AC/DC Adapter	Input voltage	100 – 240V, 50 – 60Hz
	Output voltage	9.0Vdc
	Output current	2.0A

- Recommended root canal instrument according to ISO 1797-1:  
Nickel-titanium files, suitable for 360° rotation, shaft diameter 2.35mm (type 1)



# ES-100

Endodontic Micro Motor



## FEATURE & BENEFIT

### - Powerful Performance

RPM: 250~800RPM(16:1 Contra-angle based)

Torque: 0.6~6.4 N.cm

Working time: 10hrs (2200mAh)

### - Torque Auto Reverse

### - Excellent Hand-piece

Chemically proven surface of Hand-piece

Durable contra-angle with small size head

## APPLICATION

- Used In root canal shaping procedure In standard endodontic treatment using rotary endodontic files and rotary endodontic drills

### - Auto Reverse & Stop



When the preset torque is reached , the handpiece drive runs in an anti-clockwise direction , freeing the file, then drive stops .

### - Auto Reverse & Forward



When the preset torque is reached in Auto Forward mode , the file automatically turns in the opposite direction , freeing the file, then continues rotating in a clockwise direction .

## SPECIFICATION

### - Rated Input

7.2V, 1.2A

### - Weight

443g

**COMPONENTS**

- ES-100 main unit × 1EA
- Hand piece × 1EA
- Contra angle × 1EA
- AC Adapter × 1EA





# EQ-S

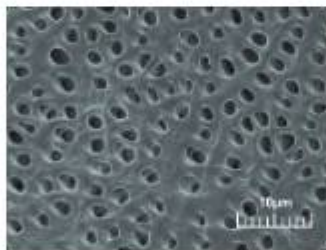
Sonic Powered Endo Irrigator



## FEATURE & BENEFIT

### - Powerful Performance

Indentation along the tip, combined with counter clockwise motion, ensures 3D active flow. The unique shape and design of the EQ-S tip creates stronger force, which enhances flow in small canal.



After the usage of EQ-S with MD-Cleanser

### - Polymer Tip

Less pressure to the apical foramen  
Easier access to curved canals  
Perfect interaction with irrigant  
Color coded

## APPLICATION

Sonic powered endo irrigator using during the endodontic treatment



35/.02



25/.02



15/.02

**COLOR**

Grey



Pink



**SPECIFICATION**

- **Weight**  
43g
- **Tip Size**  
Small (15/02, White)  
Medium (25/02, Red)  
Large (35/02, Green)
- **Tip Length mark**  
18mm, 20mm
- **Battery**  
Alkaline AA battery  
(not included)
- **Tip Length**  
23mm
- **Operation time**  
9 hours

**COMPONENTS**

- EQ-S  
Pink, Grey
- EQ-S Tip 15/02 × 30EA
- EQ-S Tip 25/02 × 30EA
- EQ-S Tip 35/02 × 30EA
- Protective Sleeve × 100EA

# EQ-V

Endodontic Obturation System



## FEATURE & BENEFIT

- Cordless Device
- Refillable, Sterilizable Gutta Percha Cartridge (EQ-V Fill)
- Easy Maintenance  
Unique structure of filling system fully inserted GP Bar doesn't mess with your device
- 360° activation ring button (EQ-V Pack)  
Providing excellent ergonomic use
- Unique Structure of EQ-V Fill
- Removable Battery
- 360° Rotating Cartridge (EQ-V Fill)
- Outstanding heating performance (EQ-V Fill)
- Removable Battery
- 360° Rotating Cartridge (EQ-V Fill)
- Outstanding heating performance (EQ-V Fill) 200°C in 40 sec
- Chemical Resistance Any disinfectant can be used
- Fill Cartridge Clean



## APPLICATION

- EQ-V Pack for down-packing with warmed Gutta Percha in the root canal
- EQ-V Fill for injecting warmed Gutta Percha in the root canal

It is recommended to fill the apical part of the canal with EQ-V Pack first to avoid any overfilling or under filling. EQ-V Fill can be used for filling the remained part of the canal.

SPECIFICATION



EQ-V Fill

- **Weight** 177g (Including Battery)
- **Operating Voltage** 3.7V
- **Setting Temperature** 160 or 200°C
- **Auto Shutoff** 5minutes



EQ-V Pack

- **Weight** 90g (Including Battery)
- **Operating Voltage** 3.7V
- **Setting Temperature** 180 or 230°C
- **Auto Shutoff** 5minutes

ORDER INFORMATION

Type	Pack Tip×1EA		Pack Tip×2EA		Single Charger	Dual Charger	Battery
	(40/.03)	(60/.05)	(40/.03, 50/.04)	(50/.04, 60/.05)			
EQ-V Full Kit (refill)				○		○	○
EQ-V Fill Kit (refill)					○		○
EQ-V Pack Kit				○	○		○

Type	Refill Cartridge (6pcs / 1pack)	Bending Tool	Cleaning Tool	Adapter	Power Cord	GP bar (100pcs / bottle)
EQ-V Full Kit (refill)	○			○	○	○
EQ-V Fill Kit (refill)	○	○	○	○	○	○
EQ-V Pack Kit				○	○	

COMPONENTS

- EQ-V Full Kit

- Dual Charger
- Pack Tip × 1EA (40/.03)
- Pack Tip × 2EA (40/.03, 50/.04)
- Refill Cartridge (23G) (6pcs/pack)
- Power Cord

- EQ-V Fill Kit

- Single Charger
- Power Cord (50/.04, 60/.05)
- Pack Tip × 2EA (50/.04, 60/.05)
- Cleaning and Bending Tool
- GP Bar 100pcs/bottle

- EQ-V Pack Kit

- Battery
- Pack Tip × 1EA (60/.05)
- Refill Cartridge (25G) (6pcs/pack)
- Adapter

# EQ-Condenser

STS & NITI tip Hand Plugger



## FEATURE & BENEFIT

- **Flexible NITI Tip & Stainless Steel Tip** Both type of tips are available with one EQ-Condenser
- **Practical length marking** marked every 5mm
- **Light weight**
- **Chemical resistant surface**
- **Smooth edge and flat end tip** preventing sticking of instrument in curved canal
- **Color coded** The unique structure of filling system don't mess up your device.
- **Anti-crack and rotation prevention**

## APPLICATION

- **Condensing obturated material in the root canal during root canal treatment**

## SPECIFICATIONS

### - NITI tip

Marking	Size	Taper
N40 ●	0.40mm	0.02
N60 ●	0.60mm	0.01
N80 ●	0.80mm	0.01

### - STS tip

Marking	Size	Taper
S80 ●	0.80mm	0.04
S100 ●	1.00mm	0.02
S120 ●	1.20mm	0.01



# Glare

Polywave Curing Light



## ADVANTAGES

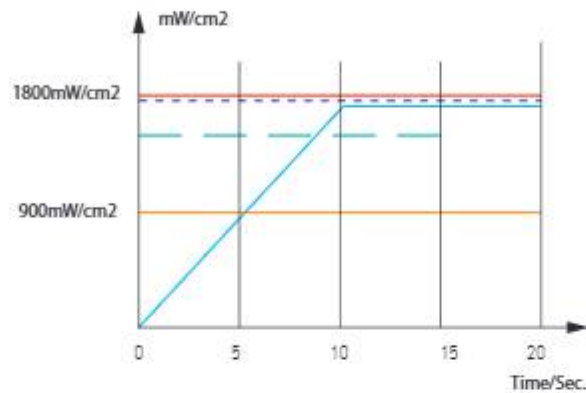
- High Intensity: 1800mW/cm<sup>2</sup>
- Focused light: deep, uniform curing
- Dual wavelength LED: 405&460nm
- 5 types of curing: High, Low, Soft start, Pulse, Ortho mode
- Slim head& 330° head twist
- Angled hand piece
- OLED screen
- Big capacity battery: 2600mAh
- Interchangeable battery pack

## SPECIFICATIONS

- **Wave length**  
400~490(nm)
- **Screen**  
OLED
- **Power source**  
Lithium-ion-battery 2600mAh
- **Light source**  
High power dual wavelength LED
- **Weight**  
Approx. 130g

## 5 TYPES OF LIGHT CURING

User can select curing type such as High, Low, Soft start, Pulse mode. Curing time also can be adjusted.



- **High mode**  
Quick polymerization with high intensity.
- **Low mode**  
Slow polymerization with low intensity.
- **Soft start mode**  
Special mode to avoid polymerization shrinkage.
- **Pulse mode**  
Special mode to avoid polymerization shrinkage.
- **Ortho mode**  
Special mode for bracket attachment.  
5cycles of 2sec curing followed by 1sec rest.









## RESTORATIVE

### Bonding / Etchant

- 50 Meta P&Bond
- 51 Meta Etchant

### Liner

- 52 Biner LC

### Hybrid Composite

- 54 Nexcomp
- 56 EZFIL
- 58 Nexcomp Flow

### Temporary Cavity Filling

- 60 MD-Temp Plus

### Temporary Cement

- 62 NETC

### Permanent Cement

- 64 Metacem

### Impression Material

- 66 Imflex
- 68 Imflex Bite

*Saving  
the Natural  
Tooth*



# Meta P&Bond

5th Generation Bonding System



## SHELF LIFE

3years

## FEATURE & BENEFIT

- 5th Generation Bonding System (Etch and Rinse technics)  
One step priming & bonding
- Superior bonding strength
- Wet bonding type

## APPLICATION

- Bonding for direct composite, porcelain, composite, metal repair, set amalgam and indirect bonding procedures with Metacem adhesive resin cement

## PHYSICAL PROPERTIES

- Dentin shear bonding strength  
10.75MPa
- Enamel shear bonding strength  
30.76MPa

## COMPONENTS

- Meta P&Bond 5g

- Micro brush × 10EA



# Meta Etchant

37% Phosphoric Acid



## SHELF LIFE

3years

## FEATURE & BENEFIT

- Easy dispensing and application
- Rinse out completely without residue
- Thixotropic characteristics(not runny)

## APPLICATION

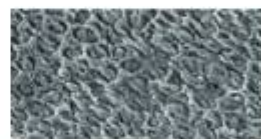
- Conditioning of surface for dentine and enamel with composite and Inlay / onlay

## CLINICAL CASE

### Enamel Sem



Before Meta Etchant application  
(x2000)



After Meta Etchant application  
(x2000)

## COMPONENTS

- Meta Etchant 3g x 3Syringes



- Disposable Tip x 20EA



# Biner LC

Light Curing Type Cavity Liner



## SHELF LIFE

3years

## FEATURE & BENEFIT

- Excellent biocompatibility with dentin and pulp
- Insoluble in water and oral fluids
- Chemically bonds to adhesives and composites
- Flow-on-demand handling and easy dispensing

## APPLICATION

- Protect pulp of the tooth
- Lining under all filling material
- Protection when applying the total etch technique

## PHYSICAL PROPERTIES

- Flexural strength More than 100MPa
- Radiopacity
- Sensitivity to ambient light Homogeneous for 60s
- Linear Expansion 2 ~ 3%
- Depth of Cure (40 sec.) 2mm

## COMPONENTS

- Biner LC 2g x 2Syringes

- Disposable Tips x 10EA





# Nexcomp

Nano Hybrid Dental Composite Resin



## SHELF LIFE

3years

## FEATURE & BENEFIT

- Low 1.6% shrinkage for superior marginal integrity
- Filled with Various nano size filler for excellent polishability
- Non-Slumping
- Various shade 19 shades available
- Optimun handling Excellent Sculptability for restoring natural shape and function
- Non-Sticky

## APPLICATION

- Class I,II,III,IV,V restorations
- Diastema closures
- Direct veneers
- Core-buildup to replace missing tooth structure
- Composite and porcelain repairs

## SPECIFICATION

- Principle organic component of polymer base  
Bis-GMA, Bis-EMA, Urethane dimethacrylate, Triethylene glycol dimehacrylate
- Recommended external energy source  
Specification required of Light curing device: usual dental halogen/LED lamps with light intensity of more than 400mV/cm<sup>2</sup> and wavelength range of 430 ~ 480nm
- Percentage by volume of total Inorganic fillers  
wt 75%
- Range of dimensions of Inorganic filler particles  
0.01 to 0.7 µm

## COMPONENTS

### Nexcomp Kit



#### 4g × 7 Syringes

A1, A2, A3, A3.5, B2, A2E, B2E



Meta Etchant 3g

Meta P&Bond Micro brush × 10EA

Meta Etchant Disposable Tip × 20EA



Meta P&Bond 5g

### Nexcomp Refill

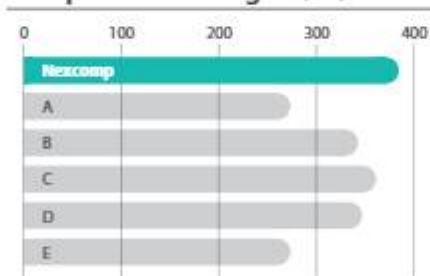


#### 4g × 1 Syringe

A2E, B2E, A1, A2, A3, A3.5, A4, B1, B2, B3, C2, C3, D2, D3, TL, WT, OP, OA2, OA3

## PHYSICAL AND CHEMICAL PROPERTIES

### Compressive Strength (MPa)



### Flexural Strength (MPa)



### Polymerization Shrinkage Rate (%)





# Ezfil

Dental Composite Resin



## SHELF LIFE

3years

## FEATURE & BENEFIT

- **High strength**  
Prevents fracture of restoration
- **Low shrinkage**  
Post-op sensitivity reduced
- **Radlopaclty**  
Accurate diagnosis available
- **Various shade**  
Natural appearance to maximize aesthetic results
- **Manipulation enhanced**  
Quick and easy treatment available

## APPLICATION

- Class I, II, III, IV, V restorations
- Core-Bulldup to replace missing tooth
- Structure
- Diastema closures
- Direct veneers
- Composite and porcelain repairs

COMPONENTS

Ezfil Kit



**EZFIL 4g Syringe × 7EA**  
- A1, A2, A3, A3.5, B1, B2, OP



**Meta Etchant 3g × 1ea**



**Meta P&Bond 1EA (5g)**



**Meta P&Bond Microbrush × 10EA**



**Meta Etchant Disposable  
Tips × 20EA**

Ezfil Refill



**4g Syringe 1EA**  
A1, A2, A3, A3.5, A4, B1, B2, B3, B4, C1, C2,  
C3, C4, D2, D3, D4, OP, TL



# Nexcomp Flow

Nano Hybrid Dental Composite Resin



## SHELF LIFE

3years

## FEATURE & BENEFIT

- Filled with Various nano size filler for excellent polishability
- Excellent Radiopacity
- Available In 14 shades Including opaque and translucent
- No slumping and running

## APPLICATION

- Restoration of Invasive cavity
- Repair acrylic temporary materials
- Pits and fissure sealing
- Repair of esthetic indirect restorations
- Base and Liner for direct restoration

## SPECIFICATION

- Principle organic component of polymer base  
Bis-GMA, Bis-EMA, Urethane dimethacrylate, Triethylene glycol dimethacrylate
- Range of dimensions of Inorganic filler particles  
0.01 to 0.7  $\mu\text{m}$
- Range of dimensions of Inorganic filler particles  
Specification required of Light curing device: usual dental halogen/LED lamps with light intensity of more than 400mW/cm<sup>2</sup> and wavelength range of 430 ~ 480nm
- Percentage by volume of total inorganic fillers  
wt 75%

COMPONENTS

Nexcomp Flow Set



- 2g x 5 Syringes
- A2, A3, A3.5, B2, B3



- 20ea disposable tips

Nexcomp Flow Refill



- 2g x 2 Syringes
- A1, A2, A3, A3.5, A4, B1, B2, B3, OA2, OA3, C2, D2, WT, TL



- 10EA disposable tips



# MD-Temp Plus

Hydraulic Temporary Restorative

## SHELF LIFE

3years



## FEATURE & BENEFIT

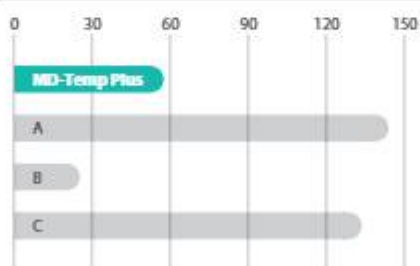
- Easy application and removal
- Hermetically seals the cavity
- Excellent stability when sets
- Proper crush strength

## APPLICATION

- Temporary cavity filling

## PHYSICAL AND CHEMICAL PROPERTIES

### Setting Time (min)



## COMPONENTS



MD-Temp Plus 40g  
White, Pink

## DIMENSION / WEIGHT

40 × 35 × 39mm / 52.5g



# NETC / NETC EASY

Non-Eugenol Temporary Cement

**SHELF LIFE**  
2years



## FEATURE & BENEFIT

- **2 types available**  
paste-paste tube type, dual syringe type
- **Working time**  
1.5min
- **Setting time**  
6min
- **Non-Eugenol**  
Suitable for patients with sensitivity to eugenol

## APPLICATION

- **Temporary cementation of crown & bridges**

## COMPONENTS

### NETC

- Tube Type



- Base 40g



- Catalyst 14g

- Mixing Pad

### NETC Easy

- Dual Syringe Type



- 11g x 2ea

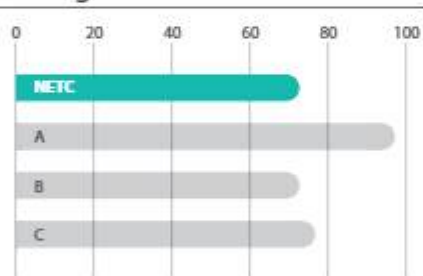


- Mixing tip x 2ea

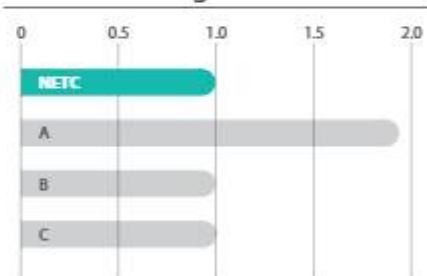
- Cap x 2ea

## PHYSICAL AND CHEMICAL PROPERTIES

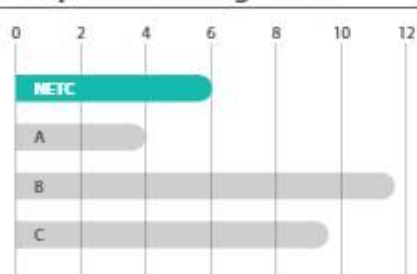
Setting time (min)



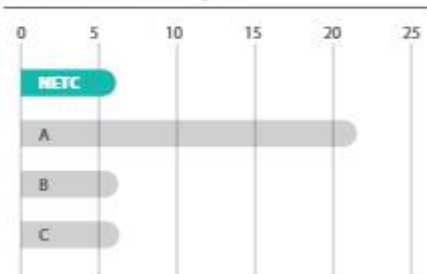
Adhesive strength (MPa)



Compressive strength (MPa)



Film thickness (µm)



NETC complies with the requirements of ISO 3107 (Type I, Class 2B)



# Metacem

Permanent Dual Cure Resin Cement



**SHELF LIFE**  
2years

## FEATURE & BENEFIT

- Easy to use for cosmetic Indirect restorations
- Provides high resistance to compressive force
- 5 shades correspond with shade guide  
A1, A3, B2, TL(Translucent white), OP(Opaque)

## APPLICATION

- Crown & Bridges (Ceramic, Composite, Porcelain, Metal)
- Inlay / Onlay cementation
- Bonding for porcelain veneers
- Endodontic posts cementation
- Core build up

COMPONENTS

Metacem Kit



- 9g x 2 Dual syringes  
A3, TL(Translucent white)



- Meta P&Bond Micro brush x 10EA



- Meta P&Bond 5g



- Meta Etchant Disposable Tip x 20EA



- Meta Etchant 3g



- Metacem Mixing Tip x 20EA  
- Spatula  
- Mixing pad

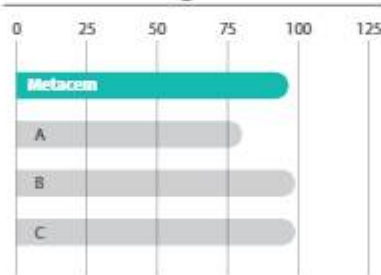
Metacem Refill



- 9g x 1 Dual Syringe  
A1, A3, B2, TL(Translucent white),  
OP(Opaque)

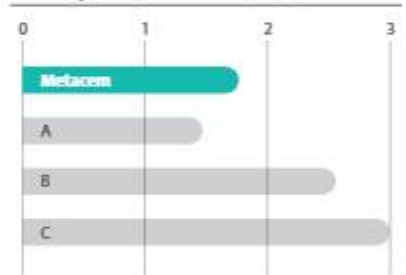
PHYSICAL AND  
CHEMICAL PROPERTIES

Flexural Strength (MPa)



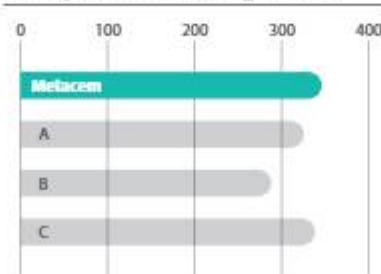
Working time 2 min  
Setting time 5 min  
Flexural strength 99 MPa  
Radiopacity 2.33mm Al/mm

Radiopacity (Aluminum step wedge thickness(mm))



Film thickness < 21µm  
Water absorption 29.3µm/mm<sup>2</sup>  
Water solubility 2.3µm/mm<sup>2</sup>

Compressive Strength (MPa)



# Imflex

Hydrophilic Vinyl Polysiloxane Impression Material



## FEATURE & BENEFIT

- Dental Impression of Inlay, onlay, crown and bridge preparation
- Treatment Functional Impressions

## APPLICATION

- Easy squeezing with a low extrusion force
- Good mechanical property & High tear strength
- Thixotropic : No flow to proximal and stable
- Controlled air-bubbles during production
- 3D scannable Impression material : powder-free

COMPONENTS

Imflex Heavy



- 50ml Cartridge 2EA
- Auto mixing tips 6EA

Imflex Monophase



- 50ml Cartridge 2EA
- Auto mixing tips 6EA

Imflex Light



- 50ml Cartridge 2EA
- Auto mixing tips 6EA
- Intra Oral tip 2EA

Imflex Putty (Catalyst)



Imflex Putty (Base)



Measuring spoon



# Imflex Bite

Bite Registration



## FEATURE & BENEFIT

- Easy squeezing with a low extrusion force
- Good mechanical property & High tear strength
- Thixotropic  
No flow to proximal and stable
- Controlled air-bubbles during production
- 3D scannable Impression material : powder-free

## APPLICATION

- Bite registration  
for getting the exact final prosthetic appliance and bite points

## COMPONENTS

### Imflex Bite



- 50ml Cartridge 2EA
- Auto mixing tip 6EA



- Rubber-Duck tip 6EA



## BONE GRAFT

### Synthetic Bone

70 BoneMedik-DM Bone

72 Sorbone

*Saving  
the Natural  
Tooth*

# BoneMedik-DM

Synthetic Bone Graft (60% HA, 40%  $\beta$ -TCP)



**SHELF LIFE**  
5years

## FEATURE & BENEFIT

- Silicon Ion containing porous Hydroxyapatite [SI-Content: Avg. 0.6wt%].  
Silicon ion technology speeds up the bone generation & heal activation
- Outstanding biocompatibility
- This structure is similar to the multidirectional, interconnected porosity of cancellous bone.
- BoneMedik-DM is derived from the exoskeleton of marine coral which has a natural trabecular structure.  
BoneMedik-DM consists of large pores which run parallel to the major growth axis and smaller interconnecting pores which run perpendicular to the major growth axis.
- Optimum balance between HA and  $\beta$ -TCP in the ratio[%], 60:40

## APPLICATION

BoneMedik-DM is a bone grafting material to fill, augment or reconstruct periodontal or oral/maxillofacial defects or osseous defects created from traumatic injury to the bone. BoneMedik-DM can be used with autogenous bone grafting materials.

- **Typical uses include**  
augmentation of the alveolar ridge  
Filling of periodontal or other alveolar bone defects  
Filling of extraction sockets  
Filling of peri-implant defects in conjunction with products intended for Guided Bone Regeneration(GBR)  
For use in elevating the maxillary sinus floor

**SIZE & WEIGHT**

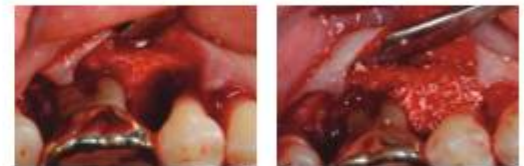
**Package Specifications (1vial / box)**

Contents	Weight			
	0.25g	0.5g	1.0g	2.0g
<b>0.3 ~ 0.5mm</b>	0.25g	0.5g	1.0g	2.0g
<b>0.5 ~ 1.0mm</b>	0.25g	0.5g	1.0g	2.0g
<b>1.0 ~ 2.0mm</b>	0.25g	0.5g	1.0g	2.0g

**CLINICAL CASE**

- **Figure 1. Clinical view during surgery**

Intrabony defect(left), BoneMedik-DM placed into intrabony defect



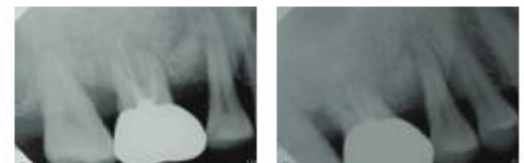
- **Figure 2. Clinical view.**

Pre-operative(left) and Six months post operative(Right) Clinical



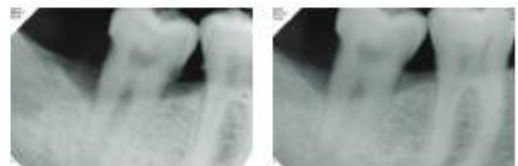
- **Figure 3. Radiographic view of test group.**

Pre-operative(Left) and Six months post operative radiographic(Right)



- **Figure 4. Radiographic view of control group.**

Pre-operative(Left) and six months post operative radiographic(Right)





**COMPONENTS**

# Sorbone

Synthetic Bone Graft (100%  $\beta$ -TCP)



**SHELF LIFE**  
5years

**FEATURE & BENEFIT**

- Excellent osteoconductivity
- Speed up the bone generation & heal activation
- Outstanding biocompatibility
- Easy handling
- Porosity: 55~60%

**APPLICATION**

Sorbone is a bone grafting material to fill, augment or reconstruct periodontal or oral/maxillofacial defects or osseous defects created from traumatic injury to the bone. Sorbone can be used with autogenous bone grafting materials.

**- Typical uses include**

Augmentation of the alveolar ridge

Filling of periodontal or other alveolar bone defects

Filling of extraction sockets

Filling of peri-implant defects in conjunction with products intended for Guided Bone Regeneration(GBR)

For use in elevating the maxillary sinus floor

**ORDER INFORMATION**

**Vial Type**



Particle Size	Weight			
	0.25g	0.5g	1.0g	2.0g
0.3 ~ 0.5mm	0.25g	0.5g	1.0g	2.0g
0.5 ~ 1.0mm	0.25g	0.5g	1.0g	2.0g
1.0 ~ 2.0mm	0.25g	0.5g	1.0g	2.0g
2.0 ~ 4.0mm	0.25g	0.5g	1.0g	2.0g

**Syringe Type**



Particle Size	Volume			
	-	-	1.0cc	2.0cc
0.3 ~ 0.5mm	-	-	1.0cc	2.0cc
0.5 ~ 1.0mm	0.25cc	0.5cc	1.0cc	2.0cc
1.0 ~ 2.0mm	0.25cc	0.5gcc	1.0cc	-



# DOMESTIC GROUP

---

META provides total solution in bio-medical field

## HEAD OFFICE

270, Osongsaengmyeong 1-ro, Osong-eup, Heungdeok-gu, Cheongju-si,  
Chungcheongbuk-do, Republic of Korea

TEL +82-43-218-1981 FAX +82-43-217-1984

## CHEONGJU BRANCH OFFICE

136, Mochung-ro, Seowon-gu, Cheongju-si, Chungcheongbuk-do,  
Republic of Korea

TEL +82-43-217-8132 FAX +82-43-217-8133

## META BEAUTY R&D CENTER

215, Osongsaengmyeong 1-ro, Osong-eup, Heungdeok-gu, Cheongju-si,  
Chungcheongbuk-do, Republic of Korea

TEL +82-43-230-8905 FAX +82-43-217-1983

## META NETWORKS CO., LTD.

55, Galmachi-ro 281beon-gil, Jungwon-gu, Seongnam-si, Gyeonggi-do,  
Republic of Korea

TEL +82-31-730-4124 FAX +82-31-744-7385

## META STSTEMS CO., LTD.

55, Galmachi-ro 281beon-gil, Jungwon-gu, Seongnam-si, Gyeonggi-do,  
Republic of Korea

TEL +82-31-731-7377 FAX +82-31-731-1888

## META VISION - SEOUL

601, B-Dong, 27, Chilpae-ro, Jung-gu, Seoul, Republic of Korea

TEL +82-2-756-2056 MAIL [master@metavision.co.kr](mailto:master@metavision.co.kr)

# GLOBAL COMPANY

---

Global Enterprise that is proud of world best  
as a cosmopolitan META BIOMED CO., LTD.

## METABIOMED CHINA

Room. 10A75, No2299, WestYan'an Road,  
Changning District Shanghai China/ 200336

TEL +86-21-6280-6286 FAX +86-21-6280-6282 MAIL [chninfo@vip.sina.com](mailto:chninfo@vip.sina.com)

## METABIOMED VINA CO., LTD.

Lot N-1B, Road No 4 Long Hau Commune Zone Expansion, Hamlet 3, Long Hau,  
Commune, Can Giuoc Distric, Long An Province, Ho Chi Minh, Vietnam

TEL +84-08-3620-6672

## METABIOMED INC. NORTH & SOUTH AMERICA

3015 Advance Lane Colmar, PA. 18915 (U.S.A)

TEL +1-267-282-5893 FAX +1-267-282-5899

MAIL [america@metabiomed-inc.com](mailto:america@metabiomed-inc.com)

WEB [www.metabiomedamericas.com](http://www.metabiomedamericas.com)

## METABIOMED GERMANY

Meta Biomed Europe GmbH Wiesenstra. 35, 45473 Mülheim an der Ruhr

TEL +49 (0) 208-309919-10 FAX +49 (0) 208-309919-99

MAIL [europe@metabiomed-inc.com](mailto:europe@metabiomed-inc.com)

WEB [www.meta-europe.com](http://www.meta-europe.com)