

Dental e-catalog

Digital X-ray Imaging System



 **GENORAY**

Software THEIA Powerful 3D image viewer for accurate diagnosis

Thumbnail View : Check all images at once

Scene Mode

Select Template type (tap)

3D Preview

Features

- MPR (Multi-Planar Formatting)
- Curved MPR
- TMJ Viewer
- External Output
- Easy Measuring tools
- Implant planning
- Support for DICOM 3.0

***3D Volume Rendering**
: Various volume rendering options such as Gray, X-ray, MIP and etc provide 3D image visualization



PAPAYA 3D PREMIUM PLUS

4 in 1 (CBCT, Panoramic, Cephalometric, Model Scanning) system



Cephalometric Sensor

SCAN CEPH
ONE-SHOT CEPH (*Optional)
Minimizes Motion Artifact and captures high-resolution images

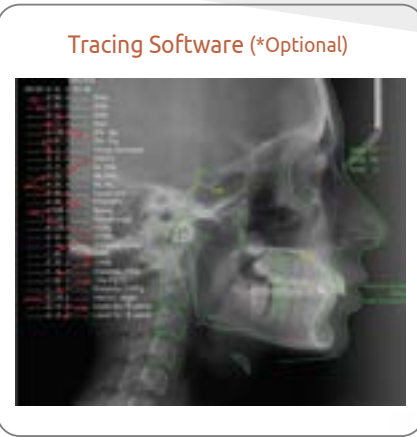


CBCT Sensor
Large FOV (23x24cm)

Panoramic Sensor

Multi Focus
Selects automatically the most optimized image

Model Scan Mode
Converts CT images into STL
Temporary prosthesis, Implant, Orthodontic treatment



Open-and-closed chinrest system
offers a small foot print suitable for areas with limited space.



Smart Positioning
By creating a database based on the patient-specific exposure conditions and positioning of the previous images, you can create fast and convenient scans without any additional adjustments.

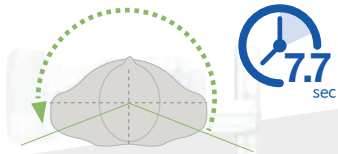


PAPAYA 3D PLUS

Combination Dental X-ray Imaging System

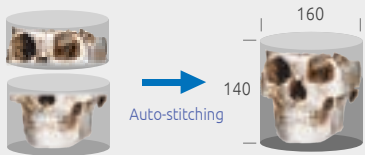
Fast Scan Time

- Minimal radiation exposure with a 7.7 seconds fast shooting time.
- Minimize motion artifacts during exposure to produce clear, accurate images



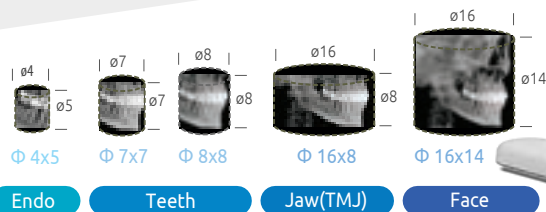
Auto-Stitching Technology (*Optional)

Auto-Stitching, a function (algorithm) that automatically calibrates and compensates for the patient's movement at the time of shooting, combines two images to reconstruct an optimal image.



Multi-FOV Selection

Multi-F.O.V. selection enables accurate scanning whilst keeping dose levels to a minimum.



PAPAYA PLUS

Panoramic / Cephalometric / Tomography

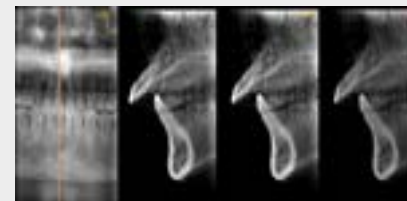
Multi-Focus function

can overcome patient mis-positioning. The user is therefore able to find the most optimally-focused choice from a selection of images.



Tomography Imaging (*optional)

PAPAYA CUST is in a 3D imaging function that provides cross-sectional information for implant preparation.



Exposure Programs

PAPAYA PLUS supports various kinds of exposure program, and they fulfill diagnosis needs. Lateral, AP, PA, Water's view, Submento vertex, and carpus are supported.



Standard panoramic

Bitewing



TMJ lateral double



PAPAYA series Clinical Images



Standard panoramic



Orthogonal panoramic



Large FOV CT - 23 x 24 Full Skull Mode



Sinus PA / Sinus lateral midsagittal

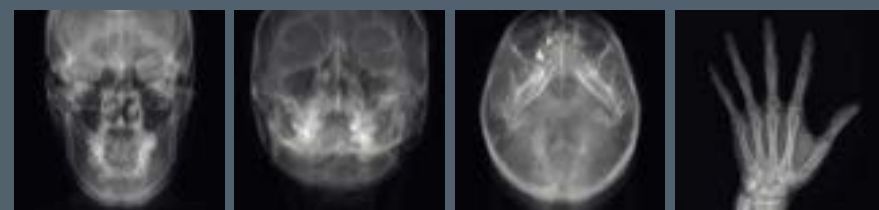


X-ray segment



Bitewing

TMJ lateral double



Port-X IV

Innovative Portable X-Ray, All in One



1.5 kg weight

0.4 mm Focal spot

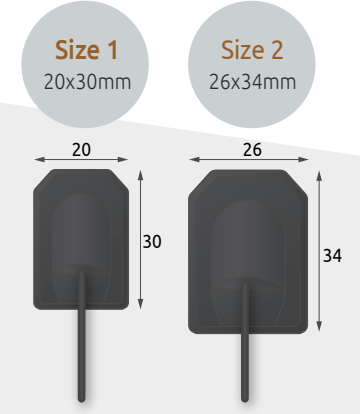
70 kv Tube voltage



USB 2.0

GIX-1

Digital Dental Intra-Oral Sensor



CMOS area image sensors
USB interface type
Monitoring photodiode
Waterproof

- Pixel size : 20x20um
- High resolution : 20Lp/mm typ
- Dynamic range : 57 db (size1) / 75 db (size2)
- USB 2.0 interface
- Waterproof : equivalent of IP67

Directly connect to Port-X IV for instant images

Portable X-ray + I/O sensor integrated system
Immediate image display on LCD with I/O sensor connections

Compact and sharp portable X-ray

- Ergonomic design for one handed operation
- Lightweight and compact due to optimal tank design
- Image viewer with clear IPS LCD Screen IPS
- Winner of Red Dot Award for Design 2017

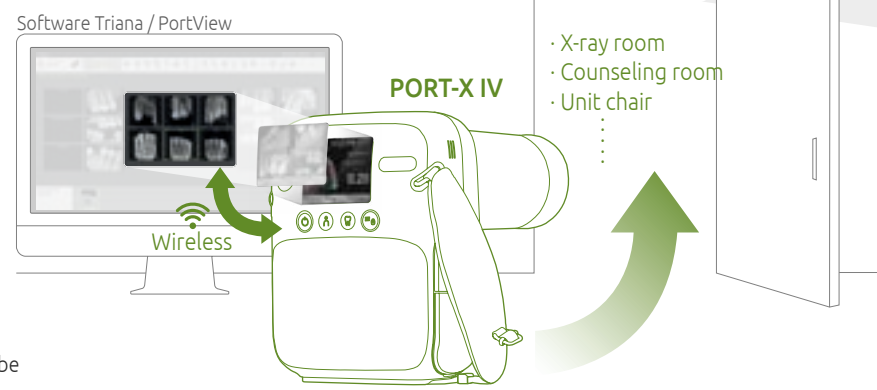
All In one portable X-ray

- Straightforward process for image capture with intuitive icons and track ball
- Easy data transmission to PC & Mobile App and firmware upgrades via Wi-Fi
- Multiple language support
- Patient and data management capabilities without a PC

Superior image quality

- Crystal clear images from 0.4mm Focal spot and 70kv X-ray Tube

Network structure



Port-X IV e

Super Light Portable X-ray



1.5 kg
weight

- Compact size, Light weight
- Portable camera type
- Easy to control UI
- Superior image quality



Port-X III



Port-X II

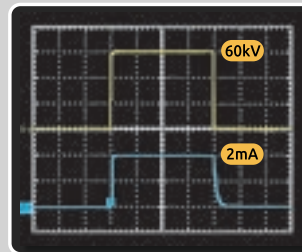
Steady Seller



- Excellent Image Quality
- Wireless Camera type
- Perfect Output for film
- Digital Sensor : 60kV, 2mA
- Easy Operation : Graphic LCD

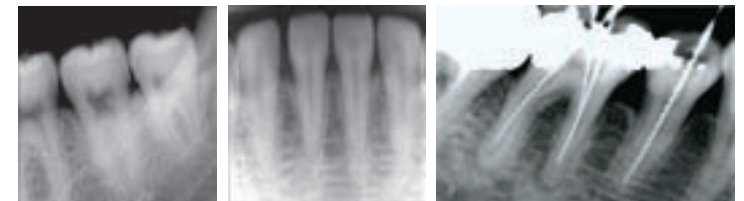


High Frequency Inverter



Stable output of X-ray radiation,
Excellent image quality

- Light and small body
- Small doses of radiation keeps patients and dentists away from radiation.
- High performance Tube and HFG make images sharp and clear.



DVAS-C

Chair type (Fixed)



Chair type (Foldable)



DVAS-M

Mobile type



DVAS-W

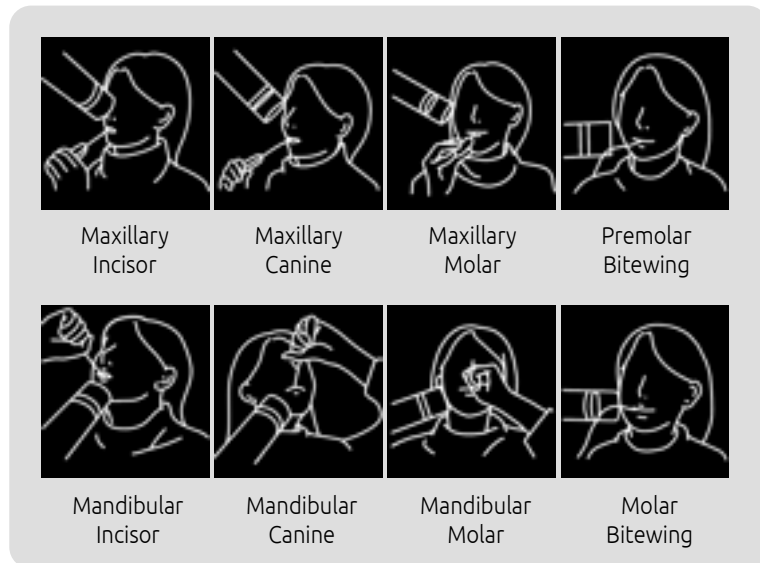
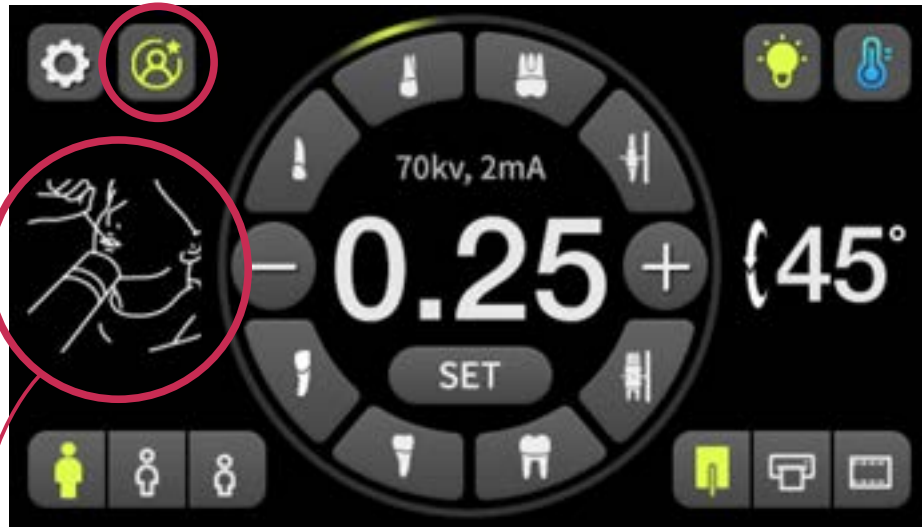
Wall-mount type



DVAS Features

Guide mode

When the button is pressed, the exposure position guide automatically appears based on the selected angle



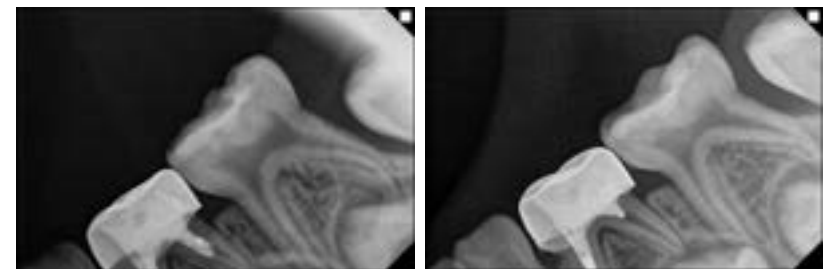
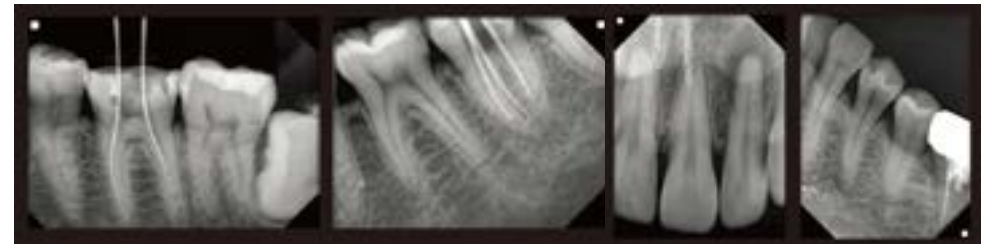
LED Pointer

The LED for the X-ray position guide is activated on the patient



Touch screen

Clinical images



Focal spot 0.8mm

DVAS Focal spot 0.4mm



GENORAY Co.,Ltd.

T +82-31-5178-5500
E genoray@genoray.com
W www.genoray.com

GENORAY America Inc.

T +1-855-436-6729
E inquiry@genorayamerica.com
W www.genorayamerica.com

GENORAY EU GmbH

T +49-30-50969498
E info@genorayeuropa.com
W www.europe.genoray.com

GENORAY Japan

T +81-45-620-4971
E Info@genorayjapan.co.jp
W www.genorayjapan.co.jp

GENORAY Türkiye

T +90-216-463-57-37
+90-216-463-57-53
E genorayturkiye@genoray.com

GENORAY Shanghai

T +86-021-6785-8538
W www.genoray.com.cn



* This X-ray unit may be dangerous to patient and operator unless safe exposure factors and operating instructions are observed.