

REGENERATIVE PRODUCTS

INTL

20
24

CITAGENIX
The Regen Company

WHO IS CITAGENIX?

Citagenix is a premier supplier of grafting products to dental surgeons, periodontists, and implant dentists across North America. We are a pioneer in offering innovative dental Bone Grafts, Membranes, Surgical Instruments, Regen Accessories and related Specialized Instruments.

Our customers know us for our complete product range and in-depth applications knowledge; our products are known for their clinically-proven efficacy and their superb handling characteristics. As a market leader for more than 25 years in Canada, we conform to the highest standards of sourcing, manufacturing, labeling, and quality control. Today, we are active and growing in more than 25 countries.

PAGE # 4

BONE GRAFTS

Allografts, Xenografts & Synthetic Grafts

PAGE # 12

MEMBRANES

Allografts & Xenografts

PAGE # 13

MATRICES

Allografts

PAGE # 16

SURGICAL ESSENTIALS

Regen accessories, Sutures & Devices

*Certain products may not be distributed in all countries. Please contact us to learn more about their availability.

CITAGENIX

PentOS OI™ Family. Proven to form bone. Every time. It's that simple!

<p>PentOS OI™ Max</p> <p>ALLOGRAFT</p> <p>PARTICULATES</p>	<p>PentOS OI™ Putty</p> <p>ALLOGRAFT</p> <p>DBM PUTTY</p>	<p>PentOS OI™ Flex</p> <p>ALLOGRAFT</p> <p>VENEER GRAFTS</p>	<p>PentOS OI™ Sponge</p> <p>ALLOGRAFT</p> <p>BONE BLOCKS</p>
<p>Osteoinductive Matrix not diluted by any carriers. Create your customized osteoinductive graft.</p> <p>FEATURES</p> <ul style="list-style-type: none"> • Mixed graft can be extruded through a syringe • Osteoinductive • Osteoconductive • pH balanced - non cytotoxic • Shown to form bone post-sterilization in-vivo • Resists copious irrigation <p>APPLICATIONS</p> <ul style="list-style-type: none"> • An osteoinductive base for composite graft preparation • Bone defects and sites requiring a high level of osteoinduction <p>MIXING</p> <p>May be hydrated with saline, blood, BMA, PRP, I-PRF or other biological preparations.</p> <p>AVAILABILITY</p> <p>Jars</p> <ul style="list-style-type: none"> • 1.0 cc 	<p>DBM made from 100% Human Bone without additional diluent or carrier to diminish its osteoinductive properties.</p> <p>FEATURES</p> <ul style="list-style-type: none"> • Osteoinductive • Osteoconductive • Excellent handling characteristics • Resists irrigation • Sterilized using low-dose gamma irradiation <p>APPLICATIONS</p> <ul style="list-style-type: none"> • Periodontal defects • Implant site development • Coronal defects around immediate implants • Extraction site repairs • Implant dehiscence defects • Sinus lift procedures <p>MIXING</p> <p>May be used alone or mixed with Raptos® allograft bone and/or Eclipse™ synthetic bone.</p> <p>AVAILABILITY</p> <p>Syringes</p> <ul style="list-style-type: none"> • 0.5 cc • 1.0 cc • 2.5 cc • 5.0 cc 	<p>1 mm thick osteoinductive, Demineralized Cortical Bone Graft. When hydrated the veneer graft becomes pliable and easily adapts to graft sites.</p> <p>FEATURES</p> <ul style="list-style-type: none"> • Osteoinductive demineralized • Can be fixated with screws, tacks or sutures • Freeze-dried • Sterilized using low-dose gamma irradiation • 5 years shelf life from the date of sterilization <p>APPLICATIONS</p> <ul style="list-style-type: none"> • Onlay grafting for the repair of shallow bone defects or bone loss • To augment thin or missing bone over root form implants • Orbital floor repairs <p>MIXING</p> <p>May be used alone or in combination with other graft materials.</p> <p>AVAILABILITY</p> <p>Veneer grafts</p> <ul style="list-style-type: none"> • 10x10 mm • 15x15 mm • 17x10 mm 	<p>100% Allograft Compressible Bone Matrix made of demineralized cancellous bone in block form.</p> <p>FEATURES</p> <ul style="list-style-type: none"> • Osteoinductive • Osteoconductive • Hydrates in minutes • Contours with the defect • 5 year shelf life at ambient storage <p>APPLICATIONS</p> <ul style="list-style-type: none"> • Missing laterals • Gutter defects with screw fixation <p>MIXING</p> <p>Rehydrate with saline, blood, BMA, PRP, I-PRF or other biological preparations.</p> <p>AVAILABILITY</p> <p>Blocks</p> <ul style="list-style-type: none"> • 10 mm³ • 12 mm³

BONE GRAFT OPTIONS

Choose from the industry's most complete range of dental bone grafts!

<p>Raptos®</p> <p>ALLOGRAFT</p> <p>PARTICULATES</p>	<p>C-Graft Putty™ & C-Blast Putty™</p> <p>ALLOGRAFT</p> <p>DBM PUTTY</p>	<p>PreservaRidge™ Plug</p> <p>SYNTHETIC</p> <p>PLUG</p>	<p>CevOss™</p> <p>XENOGRAFT</p> <p>PARTICULATES</p>
<p>Raptos® Allograft Mineralized Bone Grafts offer an osteoconductive platform for bone regeneration. Raptos® Demineralized Particles offer an osteoinductive boost.</p> <p>FEATURES</p> <ul style="list-style-type: none"> • Osteoconductive scaffold • Mineralized graft material • Supply a natural framework facilitating the attachment of osteogenic precursor cells • Remodels completely to host bone <p>APPLICATIONS</p> <ul style="list-style-type: none"> • Mineralized component in a composite graft • As a graft extender • Osseous defects <p>MIXING</p> <p>May be used alone or mixed with DBM Putty for osteoinductive potential.</p> <p>AVAILABILITY</p> <p>Syringes, jars & vials in a variety of sizes and bone types.</p>	<p>Demineralized Bone Matrix (DBM) in a Carboxymethylcellulose (CMC) Carrier - natural, plant derived carrier.</p> <p>FEATURES</p> <p>C-Graft Putty™ & C-Blast Putty™:</p> <ul style="list-style-type: none"> • Open bore syringe • E-beam sterilization • Double sealed blister packaging <p>C-Blast Putty™ only:</p> <ul style="list-style-type: none"> • With osteoconductive cancellous particles • Osteoinductive & osteoconductive <p>APPLICATIONS</p> <ul style="list-style-type: none"> • Periodontal defects • Implant site development • Coronal defects around immediate implants • Extraction site repairs • Implant dehiscence defects • Sinus lift procedures <p>MIXING</p> <p>May be used alone or mixed with Raptos® allograft bone and/or Eclipse™ synthetic bone.</p> <p>AVAILABILITY</p> <p>Syringes</p> <ul style="list-style-type: none"> • 0.3 cc • 0.5 cc • 1.0 cc • 3.0 cc 	<p>Bone Graft Composite Plug. PreservaRidge™ Plug is a synthetic plug that mimics natural bone and is made of approximately 80 % mineral particles combined with 20 % Type I collagen from bovine Achilles tendon.</p> <p>FEATURES</p> <ul style="list-style-type: none"> • Easy to use - Takes the shape of defect when hydrated to fill socket • Mineral particles are contained within the defect site • Twice the mineral compared to the competition and just as absorbent • Lower crystallinity than HA enables optimal turnover • Provides vital minerals for remodeling • Resorbs completely between 9-12 months • Median pore size in mineral is 120 µm - open like cancellous bone • Allows for more blood to be absorbed • Space for cells to propagate and remodel <p>APPLICATIONS</p> <ul style="list-style-type: none"> • Ridge/Socket Preservation <p>AVAILABILITY</p> <ul style="list-style-type: none"> • 10x20 mm • 6x25 mm 	<p>Bone matrix implant made of deproteinized bovine bone and indicated in bone regeneration.</p> <p>FEATURES</p> <ul style="list-style-type: none"> • High volume of interconnected pores promotes new bone formation and growth • Promotes osteoblasts bonding and posterior osteoid formation • Promotes osteogenesis, thanks to its osteoconductive property • No potential immunological or infectious risks • Adheres to instrumentation • Adapts to the cavity shape <p>APPLICATIONS</p> <ul style="list-style-type: none"> • Bone defects • Bone augmentation • Alveolar ridge augmentation/reconstruction • Socket filling • Ridge preservation • Implantology: implant site preparation, bone defect filling and maxillary sinus lift • Periodontology: bone defect filling, membrane support during guided tissue regeneration <p>AVAILABILITY</p> <p>Vials 250-1000 µm:</p> <ul style="list-style-type: none"> • 0.5 cc (0.25 g) • 1.0 cc (0.5 g) • 2.0 cc (1.0 g) • 5.0 cc (2.5 g) • 8.0 cc (4.0 g) <p>Vials 1000-2000 µm:</p> <ul style="list-style-type: none"> • 0.5 cc (0.18 g) • 1.0 cc (0.35 g) • 2.0 cc (0.7 g) • 5.0 cc (1.7 g) • 8.0 cc (2.9 g)

ALLOGRAFTS

RAPTOS[®] BONE BLOCKS

A Natural Scaffold for Bone Regeneration!

Raptos[®] Cortico-Cancellous bone blocks are instrumental in bone volume regeneration for severe bone atrophy cases that require an increase in initial stability for an implant site. Our cortico-cancellous blocks and wedge combine the stability of a cortical surface with the porosity of a cancellous surface for osteointegration.



RAPTOS[®] GRANULES

A Natural Scaffold for Bone Regeneration!

Raptos[®] Allograft mineralized bone grafts offer an osteoconductive platform for bone regeneration and Raptos[®] demineralized particles offer an osteoinductive component. Used either alone or as part of a composite bone graft, allograft bone particulates supply a natural framework facilitating the attachment of osteogenic precursor cells.

Premium Blend - This Cortical Mineralized/Demineralized blend combines two of the most popular allograft particles used in dentistry.



ALLOGRAFTS



RAPTOS® JARS



		0.25 cc	0.5 cc	1.0 cc	2.0 cc	5.0 cc
Cortical	125-850 μm		COR01J-05	COR01J-10	COR01J-20	COR01J-50
	250-1000 μm		COR02J-05	COR02J-10	COR02J-20	
	500-1000 μm	COR05J-02	COR05J-05	COR05J-10	COR05J-20	COR05J-50
Cancellous	250-1000 μm		CAN02J-05	CAN02J-10	CAN02J-20	CAN02J-50
	500-1000 μm		CAN05J-05	CAN05J-10	CAN05J-20	
Cortico-Cancellous	250-1000 μm		CCB02J-05	CCB02J-10	CCB02J-20	CCB02J-50
	500-1000 μm	CCB05J-02	CCB05J-05	CCB05J-10	CCB05J-20	CCB05J-50

RAPTOS® VIALS

		0.25 cc	0.5 cc	1.0 cc	2.0 cc	5.0 cc
Cortical	125-850 μm		COR01-05	COR01-10	COR01-20	COR01-50
	500-1000 μm	COR05-02	COR05-05	COR05-10	COR05-20	COR05-50
Cancellous	500-1000 μm		CAN05-05	CAN05-10	CAN05-20	
Cortico-Cancellous	250-1000 μm	CCB02-02	CCB02-05	CCB02-10	CCB02-20	CCB02-50
	500-1000 μm	CCB05-02	CCB05-05	CCB05-10	CCB05-20	CCB05-50
Demineralized Cortical	125-850 μm		DCB01-05	DCB01-10	DCB01-20	
	500-1000 μm		DCB05-05	DCB05-10		
Premium Blend - Cortical Mineralized/Demineralized	250-1000 μm		DMC02-05	DMC02-10	DMC02-20	

RAPTOS® SYRINGES



		0.25 cc	0.5 cc	1.0 cc
Cortical	200-850 μm	COR02S-02	COR02S-05	COR02S-10
	850-1500 μm			COR08S-10
Cancellous	200-850 μm	CAN02S-02	CAN02S-05	CAN02S-10
	850-1500 μm			CAN08S-10
Cortico-Cancellous	200-850 μm	CCB02S-02	CCB02S-05	CCB02S-10
	850-1500 μm			CCB08S-10
Demineralized Cortical	200-850 μm	DCB02S-02	DCB02S-05	DCB02S-10
Premium Blend - Cortical Mineralized/Demineralized	200-850 μm	DMC02S-02	DMC02S-05	DMC02S-10
	850-1500 μm	DMC08S-02	DMC08S-05	DMC08S-10

ALLOGRAFTS

DBM PUTTIES



C-Graft Putty™

Demineralized Bone Matrix (DBM) in CMC

DBM in CMC – a natural, plant derived, carrier for superior handling.

Syringes **(CG-P03)** 0.3 cc, **(CG-P05)** 0.5 cc, **(CG-P10)** 1.0 cc & **(CG-P30)** 3.0 cc



C-Blast Putty™

DBM in CMC with Cancellous Particules

Composite graft product that combines osteoinductive DBM and osteoconductive cancellous particles in CMC.

Syringes **(CB-P03)** 0.3 cc, **(CB-P05)** 0.5 cc, **(CB-P10)** 1.0 cc & **(CB-P30)** 3.0 cc



CARBOXYMETHYLCELLULOSE (CMC)

A polysaccharide hydrogel derived from linters of the cotton seed

- Commonly used in food, cosmetics and pharmaceutical preparations
- Excellent biocompatibility – does not interfere with cell mediated bone formation
- Odourless, tasteless and nontoxic
- High viscosity physiologically inert carrier which maintains its interface at the graft site
- Malleable - can be molded and placed into any shaped defect
- Excellent dimensional stability – does not significantly shrink nor expand
- Will not migrate from the graft site
- Resorbs slowly in harmony with new bone formation allowing for cellular and vascular infiltration
- Haemostatic effect when grafted into a bleeding site
- FDA classifies CMC as GRAS (generally regarded as safe)

ALLOGRAFTS



PENTOS OI™ FAMILY

100% Allograft. Proven to form bone. Every time. It's that simple!

Post sterilization in-vivo testing on each lot must demonstrate the presence of new bone, bone marrow, osteocytes, cartilage and chondrocytes within 28 days in an athymic rat model otherwise we don't call it PentOS OI™. In-vitro tests of PentOS OI™ have demonstrated native levels of BMP-2 up to 19 times the native levels in the control.



PentOS OI™ Max

Hydratable Inductive Matrix

Osteoinductive matrix not diluted by any carriers. Create your customized osteoinductive graft. pH balanced – non cytotoxic and resists copious irrigation.

Jars (*P-MAX010*) 1.0 cc



PentOS OI™ Putty

DBM Putty

Made from 100% human bone without additional diluent or carrier to diminish its osteoinductive properties. Sterilized using low-dose gamma irradiation.

Syringes (*P-PUTTYS005*) 0.5 cc, (*P-PUTTYS010*) 1.0 cc, (*P-PUTTYS025*) 2.5 cc & (*P-PUTTYS050*) 5.0 cc

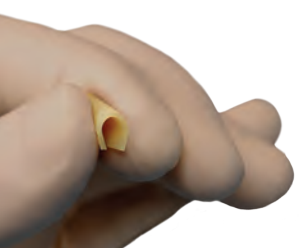


PentOS OI™ Flex

Flexible Veneer Graft

1 mm thick osteoinductive, demineralized 100% cortical bone veneer graft. When hydrated, it becomes pliable and it easily adapts to graft sites.

(*P-FLEX1010*) 10x10 mm, (*P-FLEX1515*) 15x15 mm & (*P-FLEX1710*) 17x10 mm



PentOS OI™ Sponge

Compressible Bone Matrix

Osteoinductive & Osteoconductive bone matrix made of cancellous and demineralized bone. Hydrates in minutes and contours with the defect.

Bone blocks (*P-SP-B10*) 10 mm³ & (*P-SP-B12*) 12 mm³



SYNTHETIC GRAFTS



PRESERVARIDGE™ PLUG

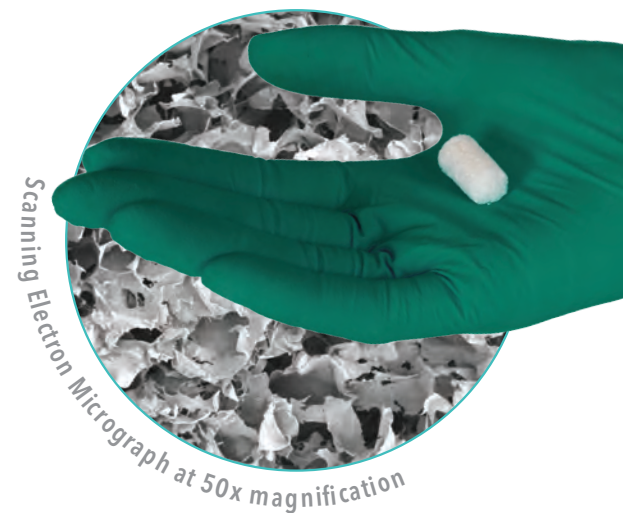
Ridge Preservation Simplified!

PreservaRidge™ Plug is a synthetic plug that mimics natural bone and is made of approximately 80% mineral particles combined with 20% Type I collagen from bovine Achilles tendon. It is specifically designed for use in post extraction treatment to help maintain ridge height and width.

PreservaRidge™ Plug is shaped like the extraction socket and is easily placed to fill the void left by the removal of the tooth root. Its porous structure, mineral content and collagen matrix makes it an ideal environment for healing and bone growth in preparation for subsequent prosthetic treatments.

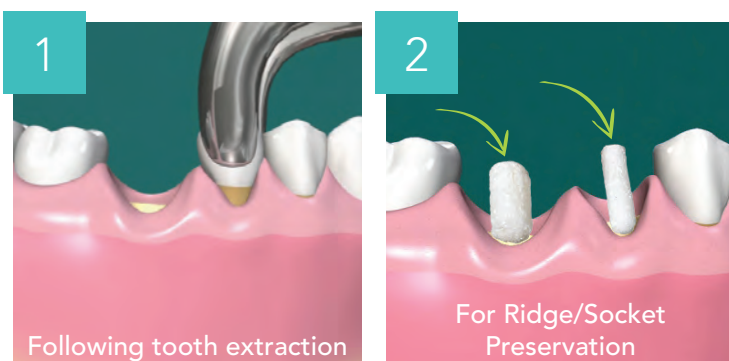
Features & Benefits

- Easy to use
 - Takes the shape of defect when hydrated to fill socket
 - Mineral particles are contained within the defect site
 - More mineral and just as absorbent
 - 80% mineral content - twice the mineral compared to the competition
 - Lower crystallinity than HA enables optimal turnover
 - Provides vital minerals for remodeling
 - Resorbs completely between 9-12 months
- Median pore size in mineral is 120 µm - open like cancellous bone
- Allows for more blood to be absorbed
 - Space for cells to propagate and remodel



Applications

- Ridge/Socket Preservation



Availability

PreservaRidge™ Plug comes in 2 sizes (posterior/ anterior) in boxes of 5.

10 x 20 mm (**PRPREG**)
& 6 x 25 mm (**PRPSLM**)

XENOGRAFTS



CEVOSS™

Bovine Bone particulates

CevOss™ bone matrix implant is made of deproteinized bovine bone and is indicated in bone regeneration. Thanks to its natural origin, it is chemically and structurally comparable to mineralized cancellous human bone (natural nanocrystalline apatite). The highly purified osteoconductive mineral structure is obtained from natural bovine bone through a manufacturing process that guarantees a 96% phase purity in strict compliance with international standards. CevOss™ is sterilized with gamma-radiation at 25kGy.

Features & Benefits

- The high volume of interconnected pores promotes new bone formation and growth
- Promotes osteoblasts bonding and posterior osteoid formation
- Promotes osteogenesis, thanks to its osteoconductive property
- No potential immunological or infectious risks
- Adheres to instrumentation
- Adapts to the cavity shape



Applications

- Implantology: implant site preparation, bone defect filling and maxillary sinus lift
- Periodontology: bone defect filling, membrane support during guided tissue regeneration
- Socket filling post-extraction - ridge preservation
- Bone defects and bone augmentation in general
- Alveolar ridge augmentation/reconstruction



Volume (cc)		0.5 cc	1.0 cc	2.0 cc	5.0 cc	8.0 cc
Weight (grams)		0.25 g	0.5 g	1.0 g	2.5 g	4.0 g
Vials	250-1000 µm	CEV02-05	CEV02-10	CEV02-20	CEV02-50	CEV02-80

Volume (cc)		0.5 cc	1.0 cc	2.0 cc	5.0 cc	8.0 cc
Weight (grams)		0.18 g	0.35 g	0.7 g	1.7 g	2.9 g
Vials	1000-2000 µm	CEV10-05	CEV10-10	CEV10-20	CEV10-50	CEV10-80

Membranes

Neomem®	Neomem® FlexPlus	Neomem® Xac
<i>XENOGRAFT</i>	<i>XENOGRAFT</i>	<i>ALLOGRAFT</i>
<i>RESORBABLE 26-38 WEEKS</i>	<i>RESORBABLE 3-4 MONTHS</i>	<i>RESORBABLE 8-12 WEEKS</i>
<p>Bovine Collagen Membrane. Neomem® membrane is a Type 1 bovine collagen matrix indicated for use in guided tissue procedures to enhance wound healing.</p> <p>FEATURES</p> <ul style="list-style-type: none"> • Higher mechanical strength for membrane stabilization in situ using either sutures or resorbable tacks • Longer in vivo stability and resorption time, for sustained function • Optimized flexibility and rigidity for better space maintenance, which allows for desired tissue in-growth <p>APPLICATIONS</p> <ul style="list-style-type: none"> • GTR • GBR <p>USE</p> <ul style="list-style-type: none"> • Either side of the Neomem® can be placed towards the soft tissue or bone • Easily trimmed and placed, wet or dry <p>AVAILABILITY</p> <ul style="list-style-type: none"> • 15 x 20 mm • 20 x 30 mm • 30 x 40 mm 	<p>Porcine Collagen Membrane. Neomem® FlexPlus is a single layer collagen membrane derived from porcine peritoneum.</p> <p>FEATURES</p> <ul style="list-style-type: none"> • High suture pull out strength • Excellent draping • Lower inflammation • Easy handling <p>APPLICATIONS</p> <ul style="list-style-type: none"> • GTR • GBR <p>AVAILABILITY</p> <ul style="list-style-type: none"> • 15 x 20 mm • 20 x 30 mm • 30 x 40 mm 	<p>Amnion-chorion membrane composed of an amnion layer and a chorion layer and together they provide a protective barrier that makes it ideal for multiple dental applications.</p> <p>FEATURES</p> <ul style="list-style-type: none"> • Minimally invasive • No trimming necessary • May be placed up or down • No fixation or pre-hydration necessary • Can be left exposed <p>APPLICATIONS</p> <ul style="list-style-type: none"> • Socket Preservation • GTR • GBR • Dental Implants • Sinus Augmentation • Ridge Augmentation • Endodontic Applications <p>AVAILABILITY</p> <ul style="list-style-type: none"> • 8 x 8 mm • 10 x 20 mm • 12 x 12 mm • 15 x 20 mm • 15 x 25 mm • 20 x 30 mm

MEMBRANE & MATRIX OPTIONS

Matrices

Neoderm™ ADM

ALLOGRAFT

*RESORBABLE
3-4 MONTHS*

Acellular Human Dermis Membrane. Natural elasticity of human skin.
Thickness of 0.9-1.6 mm.

FEATURES

- Minimally processed
- Freeze-dried and sterilized
- 2 years of shelf life at room temperature

APPLICATIONS

- Replacement of damaged or inadequate tissue
- Repair, reinforcement or supplemental support of soft tissue defects

USE

- Easily trimmed to desired shape
- Can be shaped with scissors or a scalpel

AVAILABILITY

(0.9 - 1.6 mm thickness)

- 10x10 mm
- 20x10 mm
- 10x40 mm
- 20x40 mm

MEMBRANES



Neomem[®] Bovine Collagen Membrane

Resorbable

26-38 weeks

Highly purified type I collagen fibres derived from bovine Achilles tendon. The macromolecular pore size allows vital nutrient transfer while the cell occlusive membrane retards epithelium down growth.

(N1520) 15x20 mm, (N2030) 20x30 mm & (N3040) 30x40 mm



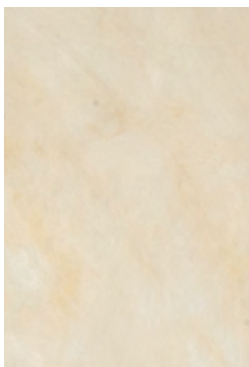
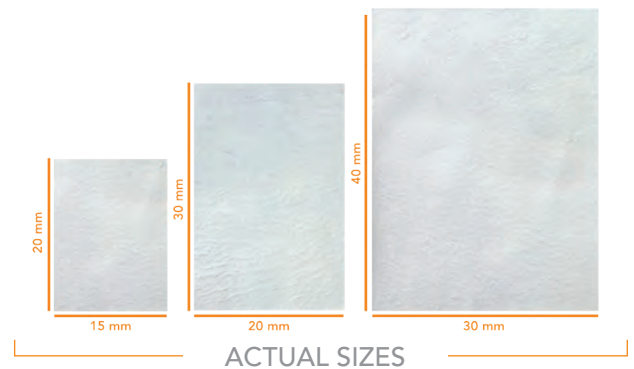
Neomem[®] FlexPlus Porcine Collagen Membrane

Resorbable

3-4 months

Single layer collagen membrane derived from porcine peritoneum. It hydrates quickly and it's handling characteristics make surgical placement easy.

(NF1520) 15x20 mm, (NF2030) 20x30 mm & (NF3040) 30x40 mm



Neomem[®] Xac Amnion-chorion membrane

Resorbable

8-12 weeks

Disinfected, cleaned, dehydrated and sterilized after recovery from cesarean section procedures. Composed of an amnion layer and a chorion layer. Together they provide a protective barrier that makes it ideal for multiple dental applications.

(NAC0808) 8x8 mm, (NAC1020) 10x20 mm, (NAC1212) 12x12 mm,
(NAC1520) 15x20 mm, (NAC1525) 15x25 mm & (NAC2030) 20x30 mm



MATRICES



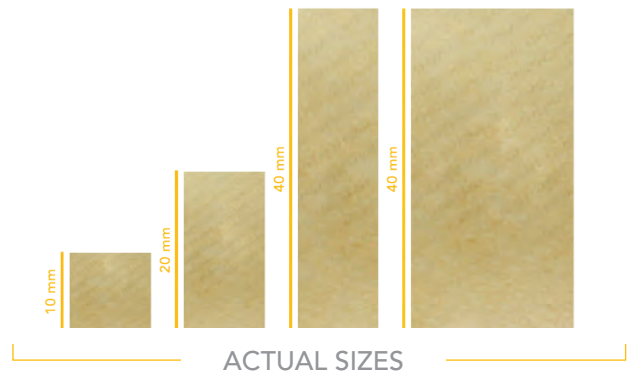
Resorbable

3-4 months

Neoderm™ ADM

Acellular Human Dermis Membrane

These human derived dermal grafts are decellularized to remove cellular components and preserve the biological properties that promote revascularization and repair. 0.9-1.6mm thickness. **(ADM1010-T)** 10x10mm, **(ADM2010-T)** 10x20mm, **(ADM4010-T)** 10x40mm & **(ADM4020-T)** 20x40mm



**NEW
PRODUCT**

Surgical Essentials | Devices

PENGUIN'S INSTRUMENTS & ACCESSORIES

Clinical Benefits Include:

- Gives dentists the ability to reliably monitor the osseointegration of dental implants
- Removes doubt when determining safe loading times
- Reduces risk of implant failure and helps contribute to better outcomes
- Works with all major implant systems
- Affordable and uncomplicated



NEW GENERATION

PENGUIN II

Introducing the New Generation!

The new Penguin II is the next-generation dental implant stability monitor for monitoring osseointegration of dental implants using the clinically-proven ISQ Scale. It provides accurate, reliable measurement of dental implant stability. Penguin II is an excellent choice for any dentist placing or restoring dental implants.

The Penguin II is a highly sophisticated Resonance Frequency Analysis (RFA) instrument that measures implant stability and osseointegration to enhance decisions about when to load. In addition to a sleeker look and more premium feel, than its predecessor, the Penguin II now features a replaceable battery – significantly extending the product's useful lifespan. The Penguin II has an updated aesthetic with important clinical purpose. New flatter sides bring increased comfort, surer grip, and better leverage when in the hand. A new LED display screen improves readability. The Penguin II utilizes cost-effective MultiTapegs, which are available for all major implant systems and are autoclavable for up to 20 uses.



PENGUIN'S INSTRUMENTS & ACCESSORIES



PENGUIN RFA

The Penguin RFA is an Innovative device that helps dentists reliably and affordably Measure and Monitor implant stability.

The Penguin RFA uses Resonance Frequency Analysis (RFA) to predictably measure implant stability providing dentists with an Implant Stability Quotient value (ISQ) to support the decision of when to restore the implant. Just mount the Multipeg™, aim for the top and the ISQ value will be displayed in less than a second. Values above 70 means high stability and are typically used for one-stage and immediate loading. (55002)



Reusable

MULTIPEGGS & ACCESSORIES



ISQ Tester

Test Block with an interval of ISQ (45-55), enabling clinicians to test their instrument. (55217)



Multipeg™

Reusable Multipegs for the Penguin RFA

Available for different implant systems. Durable, tissue-friendly & autoclavable.



Multipeg™ Driver

Driver for your Reusable Multipegs™. (55003)

WOUND DRESSINGS



NEOPLUG™, NEOCOTE™ & NEOTAPE™

Xenograft - Porous Collagen Matrices

Our resorbable dental wound dressings are absorbent and porous collagen matrices engineered from purified collagen that is derived from bovine dermis tissue.

- Can be shaped and cut to size
- Individually packed in boxes of 5 units
- Single use and supplied sterile



NeoPlug™

Resorbable

Cylindrical shape that easily adapts to surgical sites.

- Extraction sites
- Traumatic wounds
- Surgical wounds

(NEOPLUG) 10x20 mm



NeoCote™

Resorbable

Thick sponge shape that protects soft tissue.

- Periodontal surgical wounds
- Oral ulcers (non-infected or viral)
- Denture sores

(NEOCOTE) 20x40x3 mm



NeoTape™

Resorbable

Thin tape like design for more intricate uses.

- Palatal donor site
- Suture sites
- Burns

(NEOTAPE) 25x75x1 mm





CITAGENIX

1 877-243-6724
+1 450-688-2564

info@citagenix.com
Citagenix.com



As Regen Experts, we are happy to share our knowledge, so please feel free to send us any questions you may have, we're here to help!

Citagenix.com/support

