



# Carbon X series 2024

Premium Products range



## Oraloptix Prime<sup>®</sup> Surgical Microscope

*With 4K built-in system  
Continues lens*

- German Lenses
- To see a small beginning

# Microscope Master chair



*20 color options*



# ALIEN LENS



- 4 size is available 3.5/4.5/5.5/6.5
- Xpedent Alianlens ERGO loupe combine Schott Glass and Achromatic Optical PathDesign to assure high image quality.
- The Flip-Up function can bring unobstructed vision and eyecontact with your patients with a single adjustment.
- The whole structure made of ultra-light alloycreates a cool metallic look, ensuring excellent structural strength and durability, while minimizingthe weiaht and the pressure on the nose when wearing



# Dental Loupes Custom Design

- Custom Design, Artisan Craftsmanship
- Xpedent is dedicated to providing exceptional loupe solutions for dental professionals. Featuring High-Definition Lenses, a Robust Frame, and Precision Coatings.
- Utilising the latest technology, we minimise chromatic aberration and spherical distortion, ensuring unmatched clarity.
- Our loupes are crafted with hardened alloys to prevent deformation, maintaining stability and durability for long-term use.
- Featuring scratch-resistant, anti-fog, and anti-glare technologies, our loupes enhance lens durability maintaining clear vision over time.

*Customized*

2.5X

3.0X

3.5X



# TTL ERGO loupe

- Improve Your Posture
- Enhance Your Well-Being
- Visual Acuity and Ergonomics
- Designed to maximise ergonomic efficiency dental professionals, enhancing workplace efficiency. Includes integration of current prescriptions and customization options to express personal style.

*Customized*



ER3.5X

ER4.5X

ER5.5X

ER6.5X





# Dragonfly Cordless



## Dragonfly Cordless

Dragonfly provides stronger light intensity to enable work with higher magnifications.



BLUE



GOLD



GRAY

### Parameter

Intensity	55K LUX
Weight	29 gr
Run time	2 hrs
Charge time	1.5hrs
Batteries	3 pcs
Color temp'	5,750K
Yellow filter	External

# Scan Master<sup>®</sup> Intraoral Scanner

- 20 seconds full-arch scanning
- AI-powered enhancement
- Pristine accuracy
- True-to-life color
- The gyroscope inside the scanner allows you to view scanned images from different angles by simply rotating the scanner, eliminating the need to touch the screen
- Future-proof ecosystem
- Cloud storage
- Online 3D viewer
- The tiny button carries significant responsibilities
- The button controls the entire digital workflow
- It prevents cross-contamination as you don't have to touch the screen or use a mouse.
- Safety is always our top priority





# Xpe Version<sup>®</sup> Sensors

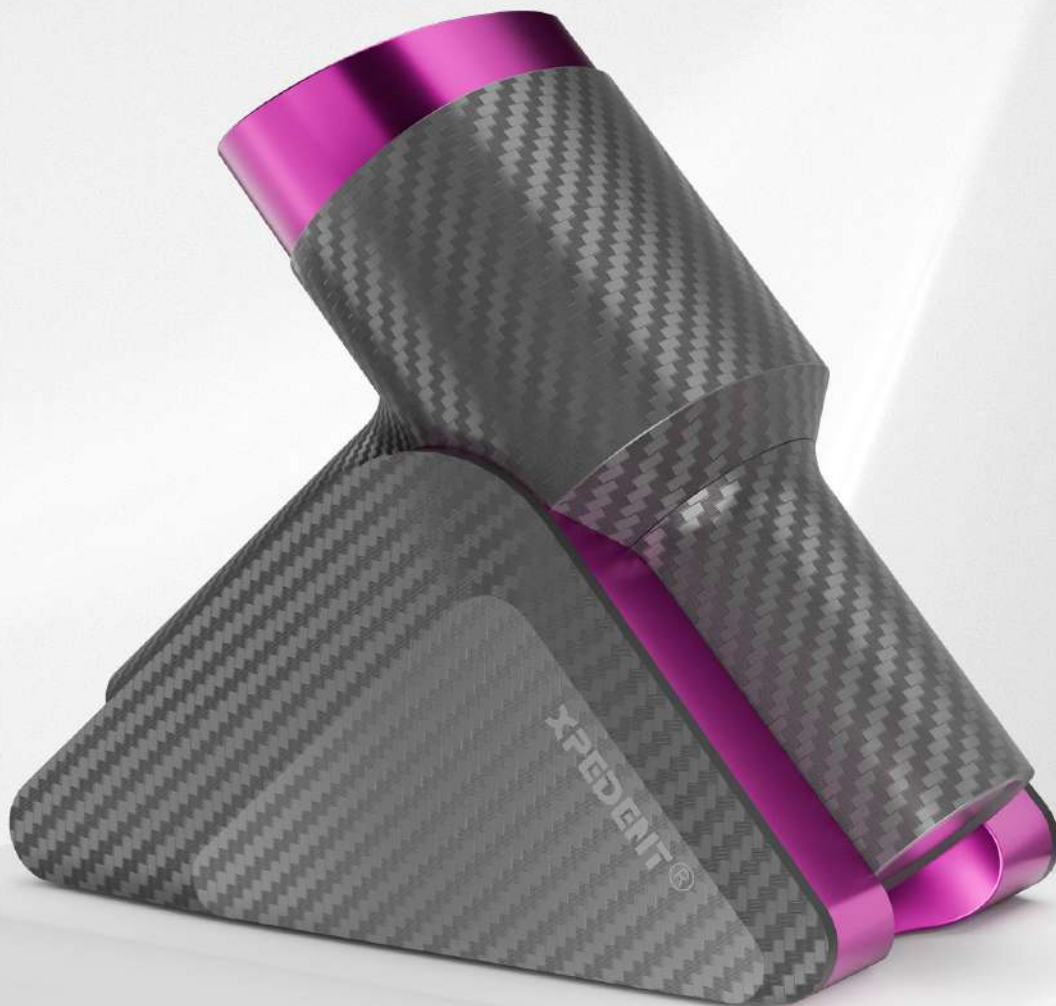
## Dental Intraoral Sensors

- Grayscale:  $\geq 16$  bits (Highest in the industry)
- Tested spatial resolution: 12-14 Lp/mm
- Connection: USB connection or Wireless
- Connection cable: 3m (Extendable)
- Compatible with operating systems: Windows 7, 8, and 10
- Cutting-edge Technology and Rigorous Testing Ensure Unrivaled Durability
- Withstand over 500,000 exposures and 100,000 cable bending tests, ensuring reliable performance in various working conditions
- Shock-resistant and waterproof casing provides secure protection for the sensor



# Evoray<sup>®</sup> Portable X-ray

- Unlike standard X-ray machines, the DC high-frequency portable X-ray machine operates without the unstable interference of external AC power, resulting in stable output rays and superior image quality.
- Utilizes a micro-focus tube with a focal size of 0.4mm, concentrating radiation and minimizing scatter for clearer images.
- Offers the flexibility of choosing from various imaging methods, including soft film, sensors, and scanners.
- Equipped with a high-power battery that ensures continuous shooting for up to 200 times when fully charged.



# SensorGrip Pro<sup>®</sup> Digital Sensor Holder

- Designed for lining the IP board (digital sensors), adjustable to fit various IP board sizes.
- Enhances patient comfort and facilitates precise and easy X-ray procedures.
- Offers excellent protection for dental X-ray sensors.
- Ideal for use with digital sensors featuring a guideline.
- The clamp size can be adjusted to accommodate different imaging plates.





# MotoSync Pro<sup>®</sup>

## 2-in-1 Brushless Endo Motor

### Built in Apex locator

- Precision Path Technology (PPT)
- TAT (Torque Adjustment Technology): Experience real-time torque adjustment in response to varying canal resistances
- Advanced Anti-Vibration Technology
- 6:1 Contra-Angle Design
- TFT Full-Color Display
- Torque from 0.4 to 5.0 N·cm and speed from 50 to 2000 rpm
- High-Capacity Battery: Equipped with a robust 2500 mAh battery

### Parameter

Screen	TFT color screen
Torque	0.4~5.0N.CM
Speed	50rpm~2500rpm
Battery capacity	2000mAh
Weight	150g



**Brushless**  
**Endo Motor**

# MotoSync MiNi<sup>®</sup> Brushless Endo Motor

*World smallest and lightest*

- Smaller and Lighter
- Built-In Apex Locator
- Precision Path Technology (PPT)
- TAT (Torque Adjustment Technology): Experience real-time torque adjustment in response to varying canal resistances
- Advanced Anti-Vibration Technology
- 6:1 Contra-Angle Design
- TFT Full-Color Display
- torque from 0.4 to 5.0 N·cm and speed from 50 to 2500 rpm
- High-Capacity Battery: Equipped with a robust 2000 mAh battery

**Brushless**  
**Endo Motor**



# DyLUX<sup>®</sup> Curing Light

- Clear OLED display
- 8 modes: Normal, High, Turbo, Ortho, Peri, Soft, Pulse, Check
- 360° rotatable head
- 10w LED, 3100 mw/cm<sup>2</sup> intensity
- 14.5° precise light angle
- Charging base with light meter -wireless charger





# VitalDuo Apex Locator & PulpTester

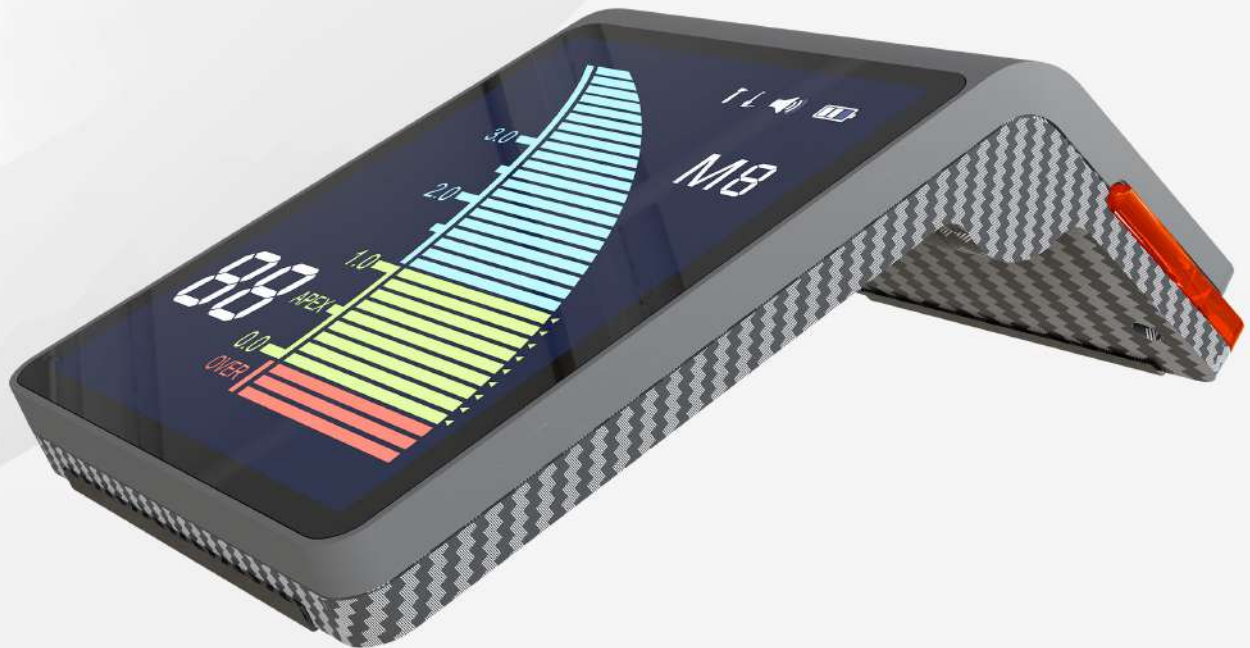
- Precision & Anti-Interference
- Advanced technology ensures precise assessments without interference
- Adjustable Sensitivity
- Three levels for personalized patient care. Innovative Pulp Testing
- Accurate tests with four levels for tailored diagnostics
- Touch Screen Convenience
- Intuitive touch screen interface with customizable settings
- Sleek Design & Durability
- Durable build with a 4-inch TFT color screen



# ApexSync Pro<sup>®</sup>

## Apex Locator

- Multi-frequency isolated network for apex locating technique, featuring a selfcalibration function when powered on to guarantee measuring accuracy
- Large colorful LCD screen with touch buttons, displaying multicolor that clearly shows the moving track of the root canal file
- Equipped with a high-capacity 3.7V/200mAh battery that can be repeatedly recharged for long life
- File clip, lip hook, and measuring file can be autoclaved repeatedly, preventing cross infection
- Foldable design for easy adjustment of the visual angle



# Chair-Side Micro Etching Master<sup>®</sup>



2 In 1

- Cost-effective
- Simple installation without a separate external pipe, directly connected to the dental-chair's four-hole high-speed interface
- Patented sand-bin, constant sand production rate, meeting clinical requirements
- Easy One-click cleaning saves the time and reduces maintenance
- Metal handpiece is durable and can be rotated 360 degrees. Easy to access to any part of the mouth
- Easy to disassemble



# Scan Master<sup>®</sup> Intraoral Scanner

- Very hard tungsten carbide steel nozzle gives longer life
- The rotatable nozzle can spray 360°
- Detachable, easy to clean and maintain
- The switch is comfortable to use, and the sand flow is accurate
- Accurate flow enables almost all sand to be used
- Four-hole standard interface, easy installation and operation, no need to take over the pipeline
- Sand blasting with water reduces dust pollution to protect the health of doctors and patients
- The only dual-purpose sandblasting machine, the unique sand design prevents clogging, giving greater efficiency
- Sodium bicarbonate and glycine dental floss powder, surface
- Coarsening aluminum oxide powder can be used



# AIR FLY Prophylaxis Powder

## Erythritol

- Used with Air Polisher for the removal of plaque from teeth
- This product is only for oral use, non-sterile product, not reusable, not oral use

## Glycine

- Used with Air Polisher for the removal of plaque from teeth
- This product is only for oral use, non-sterile product, not reusable, not oral use



**AF-1**  
SODIUM  
BICARBONATE  
60µm 300g



**AF-2**  
ERYTHRITOL  
14µm 120g



**AF-4**  
GLYCINE  
27µm 200g

# AluSparkle®

## Aluminum Oxide Abrasive Powder

- No water absorption, no blocking, high efficiency
- Perfect for working on the surface of tooth crown, inserts and orthodontic fasteners
- 27-micron sand for IDS after the tooth surface, such as polymer resin type restoration, dentin
- 50-micron sand for ceramic and porcelain restoration, such as porcelain veneers or inlays
- 90-micron sand for metal and zirconia restorations such as orthodontic brackets, implant bases, zirconia restorations





# Ultrasonic Endodontic Expert<sup>®</sup>

## Ultrasonic Endodontic Scaler

### Shel-P

- Features a clean, reliable, and sensitive touch screen with tempered glass material that is waterproof and durable.
- Equipped with an LED handpiece that provides clear working vision.
- Includes an inductive rotary water switch that is detachable and has an automatic washing function, making it easy to clean.
- Utilizes a sine wave drive to avoid instant stimulation, ensuring a comfortable and gentle experience.
- Incorporates an intelligent negative feedback system for constant power output, achieving a continuous and stable treatment effect.
- Offers two ways of water supply, making it easier than ever to change supply methods.



# Torque Wrench

# DEMO1S

# DEMO3



**Sirona®**

### Plastic Torque Wrench

TW KAV M

TW AMD M



**Amdent®**

For all Amdent tips



### Follow up



xpedent\_international



Xpedent International



Yang Jenny



jenny@xpedent.com



#### Xpedent Head Office

Xpedent UK LTD

The Old Granary  
West Chilington  
West Sussex  
RH20 2JY England



#### Sales office

Xpedent Austria GmbH

Millennium Park 9  
6890 Lustenau  
Austria



#### R & D Center

Alpazat holdings Limited

Unit C, 16/F.,  
World Trust Tower  
No. 50 Stanley Street  
Central  
Hong Kong



#### Manufacturer

GUILIN YIKESHI MEDICAL  
INSTRUMENT CO., LTD

D08 Building, High Tech  
Industrial Park, Chaoyang Road,  
Qixing District Guilin, 541004,  
China