

The Most Powerful and Dependable Light Platform

FUSION⁵ FUSION Grand

3-second cure with focused beam

*Add-on functions with
Interchangeable head:*

- Caries Detection
- Oral Cancer Screening
- Photobiomodulation
- Transillumination
- Soft Tissue Diode Laser

10mm

12mm



DentLight

The Most Powerful & Dependable LED Curing Light

Ergonomic modular design

Unique focused beam technology enables low dispersion for a reliable 3-second deep cure



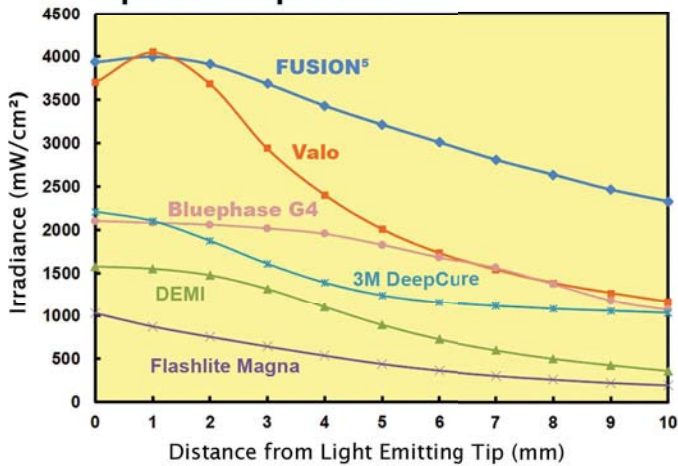
Low Profile

Small 90° head ensures patient comfort
360° swivel head for easy access

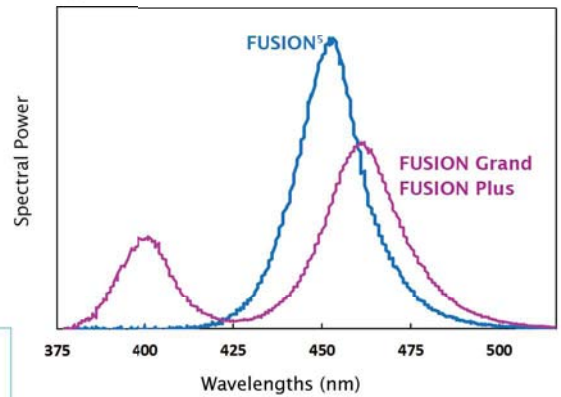
FUSION Grand Features:

- Larger tip with 44% more area coverage
- Full wavelength spectrum 380-500nm

Optical Dispersion



Optical Spectrum



Advanced LCD Keypad

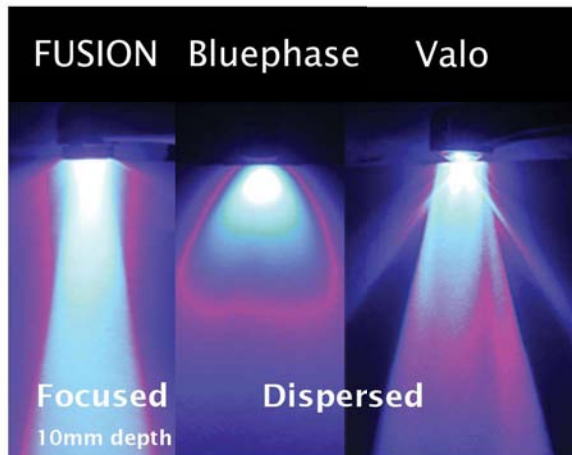
Built-in diagnostic and treatment modes

Built to Last

Aircraft aluminum durable construction

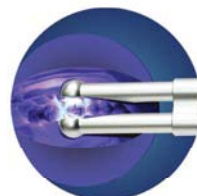
High Capacity Lithium-Ion Battery

120 minutes run time with backup
direct power plug



Add-on Functions

with Interchangeable Head



Twinhead for bulk cure
PN 7810060



FUSION Grand/FUSION Plus
7830060/7820060



Ultrafast Laser
7300100



Caries/Cancer Detection
PN 7500152



Transillumination
7800060W



PBM
7800060RIR

“A phenomenal company that consistently develops products to meet dentist’s needs”
- Dr. Howard Glazer



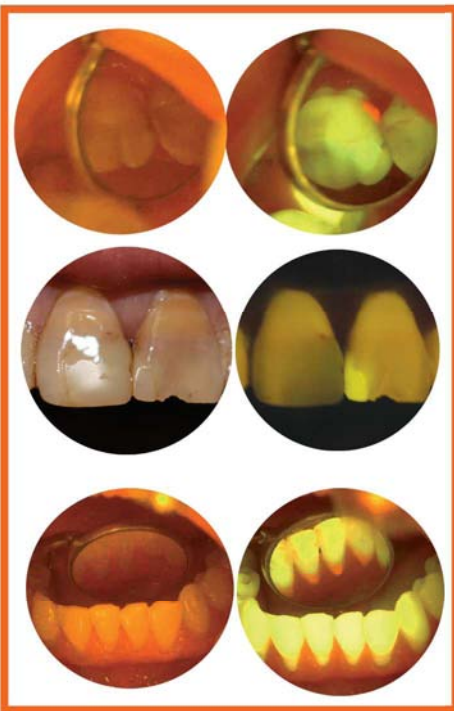
DOE Diagnostics

Oral Health is all about **EARLY DETECTION AND PREVENTION**

See the Invisible

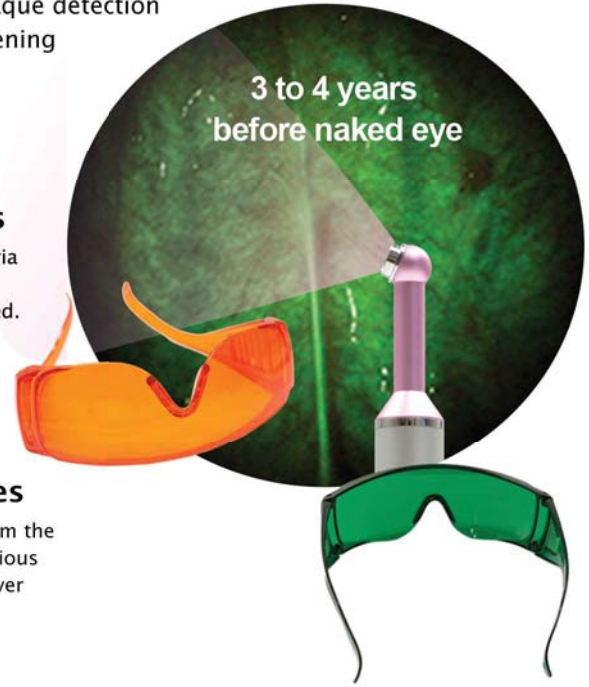
Violet head generates high contrast fluorescence:

- Orange fluorescence goggles or shield for caries, composites, and plaque detection
- Green fluorescence goggles or shield for soft tissue early cancer screening



Dental Caries and Decays

Red fluorescence is emitted from bacteria in caries and decays under violet head illumination and can be directly observed.

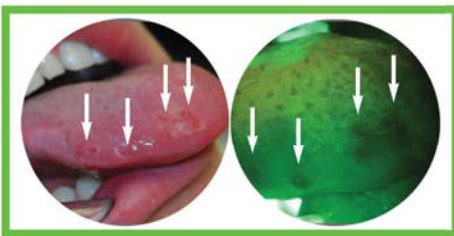


Composites and Adhesives

Composites and adhesives stand out from the natural tooth structure. Removal of previous restorations or excess adhesives has never been easier.

Active Plaque

Enhanced visibility allows for more precise identification and easier removal of active plaque and bacteria.



Cancer Early Detection

Loss of fluorescence provides early stage signs of oral cancer. Save lives by detecting abnormality 3 to 4 years before naked eyes can see it.

Insurance Code: D0431

PBM Treatment

Photobiomodulation Therapy

- Dual Wavelengths 660nm and 810nm
- FUSION PBM for intra oral use: 400mW
- FUSION Plus PBM (34mm) for intra and extra oral: 800mW
- Uniform beam with perfect optical dosage control



TMD Treatment

Deep Tissue Repair

Promote Wound Healing

Reduction of pain and inflammation

Reduced need for post-op analgesia

Induced biostimulation or bioinhibition



"Extremely successful in treating patients pain. It has eliminated the need to prescribe post-op opioids."

- Dr. Gerry Ross DDS



Award-winning FUSION platform

Powerful and Versatile

Order Information

PN:7800080X FUSION⁵ Curing Light Kit:

Including FUSION Handpiece, Charging Stand, Curing Caps (tacking, 9mm and 13mm), Power Adapter, Light Shield, Barrier Sleeves (100), and Instructions for Use
X=Blank (Silver), BL (Black)

PN:7830080 FUSION Grand Curing Light Kit:

Including FUSION Handpiece with Grand Head (12mm lens), Charging Stand, Power Adapter, Light Shield, Barrier Sleeves (100), and Instructions for Use

PN:7820080 FUSION Plus Curing Light Kit:

Including FUSION Handpiece with Plus Head, Charging Stand, Curing Caps (tacking, 9mm and 13mm), Power Adapter, Light Shield, Barrier Sleeves (100), and Instructions for Use

PN:7910080 FUSION PBM Light Kit:

Including FUSION Handpiece with PBM Head, Charging Stand, Power Adapter, Safety Goggle, Barrier Sleeves (100), and Instructions for Use

PN:7920080 FUSION Plus PBM Light Kit:

Including FUSION Handpiece with Plus PBM Head, 34mm Beam Expander Charging Stand, Power Adapter, Safety Goggle, Barrier Sleeves (100), and Instructions for Use



Combination Curing and Diagnostic Options

7700512 FUSION-DOE Kit

Including FUSION⁵, Violet Light Head, Green and Orange Fluorescence Goggles, Curing Caps, Charging Stand, Power Adapter, Barrier Sleeves, and training guide

7710010 FUSION-DOE Deluxe Kit

Including FUSION⁵, Violet and Transilluminator Heads, Green and Orange Fluorescence Goggles, Curing Caps, Charging Stand, Power Adapter, Barrier Sleeves, and training guide

Add-on Options and Accessories

7500152 FUSION⁵-DOE Starter Kit (Violet Head and Goggles)

7500088 Orange Fluorescence Goggle

8500123 Green Fluorescence Goggle

7700192 Orange Fluorescence Shield

7700092 Green Fluorescence Shield

7500082 Barrier Sleeves (100/pack)

7800060U Violet Light Head

7800060W Transilluminator Head

7500084-08 FUSION Battery Assembly

7500093 FUSION Lens Module

7810060 FUSION Twinhead

7600081 Curing Caps - 9mm (10/pk)

7610081 Curing Caps - 13mm (10/pk)

7620081 Tacking/Exam Tip - 3mm (10/pk)

7500083 Charging Stand



9mm

13mm

3mm



Lights, Camera, Action!



Advanced Hands Free Platform

The Smartest and Smallest Light

Black Fluorescence Imaging

SafeLoupe Laser Filter

HD Loupe Camera

Ergo HD Loupes



Nano Freedom is crammed with innovative technologies. It is bright, light, and feels just right. Best of all no stray wires, no inconvenience, no hassle. iOCam provides super sharp magnified live video for enhanced patient communication/referrals, insurance documentation as well as staff and student training/education.

Dr. George Freedman, Richmond Hill, ON, Canada



iZoom Loupes - Very comfortable, lightweight, and cool-looking. Excellent optics, wide field and very good resolution.

Dr. Michael Miller, Houston, TX



The SafeLoupe system is a "must have" product when doing laser procedures.

Dr. Howard Glazer, Fort Lee, NJ

DentLight



Nano Freedom²

Wireless = Effortless



Mounting Adapter
Easy Dovetail Attachment

Lightweight battery
Proximity sensor On/Off
Slide to existing frame temple
Little extra weight on nose or ear

Freedom Lamp
Penny size 5 grams
Focused beam (~3" field)
Easy clip-on filter

Reconfigurable

Nano Technology Teflon Connection
Field Reconfigurable for Function, Fit, and Service

Safeloupe Insert
Fluorescent Filter

Superior Performance

20000 (one battery) or 40000 lux (two batteries)
3 (one battery) or 6 hours (two batteries)
Color temperature (5500-6500K)

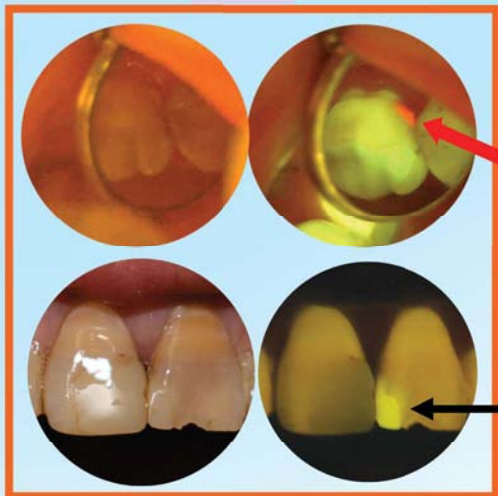
Black Lamp
Dual wavelengths

Seeing is Believing!

Nano Black

**Dual Color: White and Violet for
Illumination and Fluorescence**

Composites
Caries
Plaque
Cancer



Visualization of dental caries and decays

Detecting composites and excess adhesives

Amazing Wireless Light !

NO MORE TANGLED CORDS!

Nano 2S Plus



Freedom Lamp
Super Lightweight

Reconfigurable
Nano Technology Teflon Wire
Field Reconfigurable
Easy Upgrade to Wireless
Memory wire conforming to frame contour

Incredible Engineering Design

- Three Power Levels (40, 20, 16k lux)
- Light Weight (lamp 5g, battery 118g)
- Super Small (lamp 16mm)
- Flexible Thin wire
- 10-24 hours Non-stop run
- Recharging time: 90% in 2 hours

Xtreme²



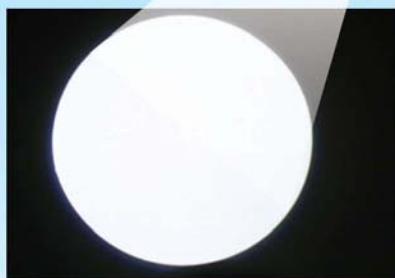
Long Lasting Smart Battery

10 to 24 hours running time (3 power settings)
Super reliable MicroUSB connection
Hands free raised elbow activation button
Constant output power throughout run time
Pass drop proof test

Surgical precision

Super high contrast
60000 lux

Seeing beyond the surface



DentLight

Fit on Any Loupes or Eyewears

Add-on Options and Accessories

8600120 Nano Freedom lamp



8600220 Nano Black lamp



8600022 Nano composite filter



8610110 Nano Freedom battery pod



8600530 Nanio Freedom battery (2/pk)

8600130-2 Nano 2S Plus Battery Pack

8601140 Nano Freedom Dual Battery Charger

8500224 Female Dovetail adapter



8500124 H-adapter



8500127 Slide-in-adapter



8501124 T-adapter



8701100 Universal-H combo adapter



8500121 Uc-adapter



8500128 Q-optics adapter



8510120 Articulating arm



8510121 Single side arm



8510122 Branch arm



8511123 Camera branch arm



8501032 2S+ MicroUSB cord



8610130 2S Battery Clip



8501022 Freedom cord



Dual Battery Charger always keeps a fresh backup battery

Fully charged in < 1 hour

iSquare Light

Easy Interchange with Existing Light

- Slide in direct fit to existing arm fixture
 - easy wire twist connection to existing 2 wires
 - match fixture diameter for easy fit
- Reflective focused square illumination beam
 - Uniform color temperature throughout FOV
 - Self dimmable and easy on/off
- Composite filter attachment with easy flip-up for preventing curing
- Large depth of field
- LED can save up to 90% on energy bill



Power Supply: AC or DC 7 - 24V

Power: 6W

Intensity: 0 - 45000 lux

Light Pattern: 180 x 90 mm (at 27")

Color Temperature: 5000 K

Standard Adapter Size: 22mm

Weight: 2.2 lbs

Optional: Integrated Camera or Composite Filter

Order Information

8600140 **iSquare Operating Light**

DentLight

iZoom HD Loupes

High definition and quality loupes with high resolution and high contrast images. Lightweight frames and optics deliver the most comfort and better working posture.



Ergo



TTL



Flip-up



Variable

2.5 - 6.0 X



Part Number

850005 0 - 250

Loupe	Type	Magnification	Working Distance	Reading IP Distance	Case Type	Frame
0=Flipup*		250=2.5X	S=10-14"	50=Flipup	S=Soft Case	A=Adilite
2=Variable*		300=3.0X	R=14-18"	54=54mm	M=Metal Case	D=D2
3=Mini*		350=3.5X	E=18-22"	56=56mm		M=Metal
4=TTL		2530=2.5-3.0X		58=58mm		R=Rudilite (Ti-temple)
5= Ergo		3035=3.0-3.5X		60=60mm		Y=Rudy Project Rydon
		400=4X		62=62mm		
		600=6X				



Including Loupes, Case, Soft Cleaning Cloth, Headstrap, and Screw driver*.

SafeLoupe

Adaptive Loupe Filter for Laser, Curing and Fluorescence

Tired and annoyed with clip-in filters?

- Fighting to fit onto your loupes
- Discomfort on your face from
 - Weight
 - Fogging
 - Hurting your eye/face
- Low light and color distortion
- Procedure interruption
- Cross contamination

Quick and easy SafeLoupe Clip-on

Preconfigured to your loupes in adapter size and the number of articulating arms
Facial viewing field laser protection from diode lasers direct and reflected beams.

Why buy laser loupes if you can convert your own?

Try patent-pending SafeLoupe Laser Filter:

Adaptive filter to your loupes

- Clip-on to loupes ocular rim
- Super lightweight and comfortable
- Minimum light loss
- No color distortion
- Hassle free laser procedures
- Custom preconfiguration to your loupes
- Extraocular shield for full protection



Specifications

810nm OD5+
940nm OD5+
980nm OD5 +
1064nm OD7+
2780nm OD7+
2940nm OD7+

Curing
380-500nm OD2+



Safeloupe Insert



Integrate your Loupes with Adaptive Filters

- Easy slide fit in
- Lightweight and comfortable
- Hassle free laser and restoration procedures

DentLight

iOCam HD Video Camera



**HD 1280x720
Magnified Images**

Empower you with iOCam
Magnified Imaging and Communication System
Your handsfree assistant
Capture what you see
Share your findings with patients etc.

**Video or
Picture**

Ease of Use and Adaptation

- Fits to loupes (Orascope, DFV, Zeiss etc)
- Compatible with most headlights
- Easy slide in and out of the eyewear
- Built-in microphone

Incredible Engineering Design

- **Magnifications at 16-inch distance**
2.0X, 3.0X, or 5.0X
- **Resolution** 1280x720 @ 30 fps
- **Lightweight and small size**

	Weight (grams)	Size (mm)
Imager	4	23 (D)x13 (L)
Lens	8	15 (D)x13 (L)

• Run time:

USB Limited by hard drive
Wifi Battery 4.5 hours (Optional)

- **Live recording or still image snapshot**
- **Compatible with existing patient software including**
Dexis Imaging and Vixwin



Communicate better
Raise your acceptance rates
Market your practice with an edge

DentLight

1825 Summit Ave. #210
Plano TX 75074
Tel: 972-889-8857
Email: sales@dentlight.com
www.dentlight.com