

# Company profile

 English



J DENTAL CARE

*just smile*



Made in Italy



# Global leader in dental implantology

JDentalCare is an Italian company based in Modena, Italy, global leader in dental implantology.

Through its network of distributors across 5 continents, JDentalCare offers innovative and top quality solutions to doctors and patients from all over the world. With its full comprehensive portfolio of products, a complete range of digital solutions and an advanced program of international trainings in collaboration with recognized speakers, JDentalCare is able to meet the expectations and the needs of all the modern dental implants users.





# Mission

**SIMPLICITY. QUALITY. INNOVATION.**

We develop easy to use, high-quality and innovative dental implant systems to guarantee effective and affordable solutions for doctors and patients from around the world.

A full range of dental implants, instruments, digital solutions and training courses are designed to help dentists to improve their working profession and patients' lives. Together we just make people smile.



**>12 years**

**CLINICAL EVIDENCES**



**>15 years**

**RESEARCH & STUDIES**



**11**

**IMPLANT LINES**



**100%**

**QUALITY MADE IN ITALY**



**4'000m<sup>2</sup>**

**HEADQUARTER**



## Maxilla-For-All® treatment concept

JDentalCare is specialized in the rehabilitation of severe maxillary atrophy with the **Maxilla-For-All®** protocol: an innovative treatment that combines the use of pterygoid, trans-sinus, trans-nasal, and zygomatic implants in order to rehabilitate 100% of cases of severe atrophy in the maxilla without bone graft. **Maxilla-For-All®** is able to significantly reduce the invasiveness and the time of the procedure compared to traditional regenerative techniques and, therefore, this kind of procedure lower costs, both for the clinician and the patient.

## JD-igital Guide and Z-GO Guide™

JD-igital Guide\* is a simple, predictable and customizable guided surgery software according to the needs of the clinician as well as the patient. JD-igital Guide is certified EU MDR and FDA.

Z-GO Guide™ is a patented guided system to support clinicians during the challenging and complex cases involving zygomatic implants. A cutting edge, bone supported, surgical guide to make your zygomatic surgeries precise and predictable.

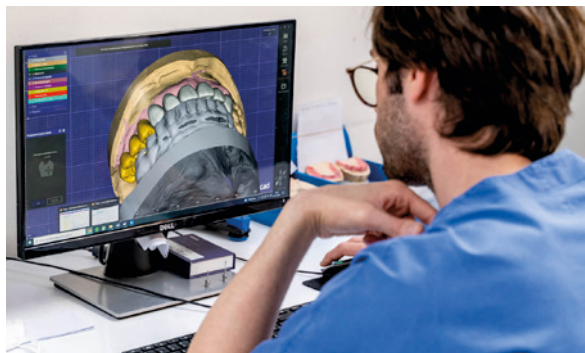
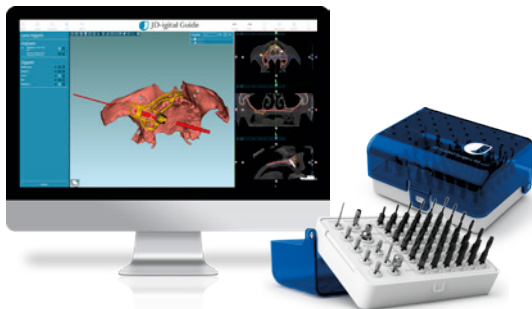
\*powered by RealGUIDE™

## Digital Solutions

JDentalCare offers services and product supporting the 100% clinician's digital workflow.

All JD Scanbody are made to perform an easy and accurate digital impression directly in the patient mouth, and to perform a **Full Arch-Full Digital** workflow.

JDentalcare provides open implant libraries for all JD implant lines to guarantee maximum precision and flexibility to the laboratory technicians.







## Quality and certifications

### CERTIFIED PROCESSES AND STRICT TESTING FOR LIFETIME SAFETY

JDentalCare is certified according to the strictest international standards: our products are CE certified, according to EU MDR, FDA approved and registered in more than 60 countries worldwide. JDentalCare's quality management system is certified by TÜV SÜD according to MDSAP.

All dental implant systems are tested in accordance with ISO 14801, in order to ensure lifetime resistance.





## JDentalCare Education

### THE IDEAL TRAINING PARTNER FOR DENTAL PROFESSIONALS

JDentalCare is the ideal training partner for your continuous education.

The JDentalCare full range training program is composed by all the fields from basic implantology, full arch restorations techniques, as well as theoretical and practical courses on the most advanced surgical procedures in dental implantology (e.g. pterygoid, trans-sinus, trans-nasal and zygomatic procedures).

JDentalCare lectures are only held by selected speakers of international standing.

## JDentalCare Training Center

### A WIDE RANGE OF THEORETICAL, PRACTICAL AND LIVE STREAMING COURSES

JDentalCare Training Center is the training Academy of JDentalCare. The training center is located inside the company's headquarters, in Modena, and is a multifunctional area of more than 600m<sup>2</sup>, equipped with 3 training rooms, including one hands on room for practical courses.

During the years, the training center hosted a large number of local and international courses.

Don't miss the opportunity to bring your skills to the next level by joining our courses. Discover the new frontiers in dental implantology!

JDentalCare s.r.l  
via Dino Campana, 2  
41123 Modena, Italy  
info@jdentalcare.com  
+39 059 454255

JDentalCare, the JDentalCare logo and other trade marks mentioned in this document are, excluding specifically mentioned exceptions, trade marks property of JDentalCare. The images of the products represented in this brochure are not necessarily on scale.