



Factory 1 | NO.9, 83 Road, Waryong-ro, Seo-Gu, Daegu, South Korea (zip code: 41754)
Factory 2 | NO.41 90 Road, Waryong-ro, Seo-Gu, Daegu, South Korea(zip code: 41759)
West Daegu Smart Tech Hub Floor B2 NO. 203
Tel | +82-53-351-1772 **Fax** | +82-53-351-1775



ACCREDITED WITH KGMP



CORIDENT

The Best Dental Manufacturer & Export Co.



www.corident.com



diarc

DENTAL ARTICULATOR SYSTEM 디아크

dental + insight = articulator / arch

It was intended to express Corident's technical skills and professionalism by using the ideal dental structure, that is an arc, as a motif in development and 'The concept that we make the globe smile' contains the philosophy of the company.

Company Name | CORIDENT

Chairship | Dong-Hea Ye(president)

Address | NO.9, 83 Road, Waryong-ro, Seo-Gu, Daegu, South Korea (zip code: 41754)

Contact No. | Tel : +82-53-351-1772 Fax : +82-53-351-1775

Certification



History

2001

- 04. Registered Dental Removable Pin as Practical Utility(#0274265)
- 06. Acquired permission of manufacturing medical instruments
Tooled from Ministry of Health and Social Affairs
- 07. Established the CORIDENT

2002

- 09. Registered Implant Tray as Practical Utility, PCT requested
- Patent Implant Tray, PCT requested

2003

- 01. Appointed as Incubating Agency by Credit Assurance Fund
- 06. Appointed as promising export company by Business Administration
- 10. Acquired Authentication Mark (ISO 9001/2000)
- 11. Acquired CE Mark

2004

- 08. Articulator development by Innovative Technology of Business Administration
- 07. Patent C.S.A 500 Articulator

2005

- 09. Registered Dental Tray for patent
- 10. Appointed as Venture Company

2006

- 12. Be selected as Inno-Biz Participation development innovative technology of Business Administration

2007

- 09. Recognized quality management standard for medical devices(GMP)

2008

- 09. Recognition of foreign medical device manufacturers(Japan)

2012

- 03. A dental gold alloy with a tiny amount of titanium patented

2014

- 09. A dental occluder patented
- 10. Obtained US FDA accreditation

2016

- 08. Acquired Authentication Mark ISO13485

2017

- 01. Cobalt Chromium alloy metal block for dental CAD/CAM and its manufacturing method patented
- 11. The implant Model Articulator patented

2019

- 10. Building additional Factory 2
- 11. Recognized quality management standard for medical devices(GMP Class2)

CSA 650 ARTICULATOR

THE DIARC650 ARTICULATOR was upgraded from the existing CSA600 Articulator. THE DIARC 650 is an advanced articulator in terms of convenience and design based on ergonomics.

**All adjustable articulator
with a calibration system**

Condylar Angle($0^{\circ}\sim 50^{\circ}$)
Bennett Angle($0^{\circ}\sim 45^{\circ}$)
I.S.S(Immediate Side Shift)



diarc
DENTAL ARTICULATOR SYSTEM

Convenience



- Fully open access from the lingual position for easy access during denture



- Condylar Angle 50° adjustment
- Latrusion



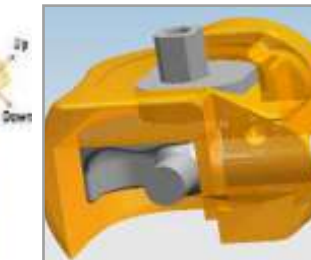
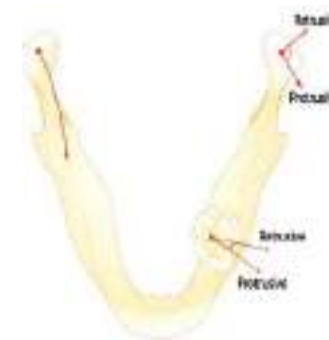
- Retrusion
- Protrusion



- Simple immediate side shift

Articulator Development

Retrusion, Protrusion Movement Reproduction



- Retrusion
- Protrusion

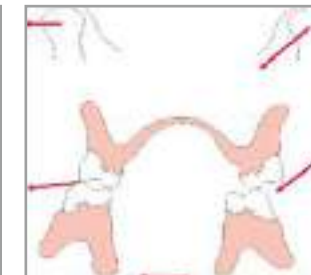
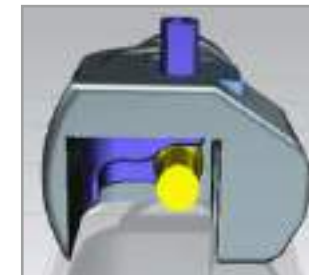
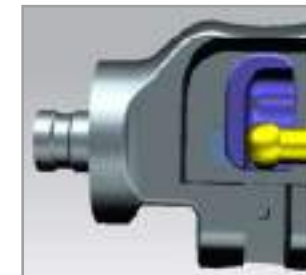


- Bennett Angle
- Condylar Angle

Improvement of Masticatory Force Control System

Condylar Guidance was improved and reconstructed with anatomy-based data.

Smooth movement of the condylar improves occlusal pressure



Improvement

The diarc 650 Articulator has been improved for Condylar Angle, Bennett Angle, Condylar Lock and I.S.S(Immediate Side Shift).

Operation

Retrusion and Protrusion movement are added.

Advancement

Condylar, Retrusion, Protrusion and I.S.S have been advanced equally with human body structure, the design is also refined.

CSA 600 ARTICULATOR

CALIBRATION System makes it possible for the dental clinics and labs to interchange plaster tooth cast without exchanging articulators themselves. And it ensures that only casts can be iterchanged among CSA Articulators without inaccuracy.

**All adjustable articulator
with a calibration system**

Condylar Angle($0^{\circ}\sim 50^{\circ}$)
Bennett Angle($0^{\circ}\sim 45^{\circ}$)
Side Shift adjustable



Verstile Articulating System & Higher Precision

System	Calibration System with adjustable condylar inclination, bennett inclination and side shift system.
Precision	CSA600 articulator is the perfect choice for analysis, treatment planning
Operation	It combines the advantages of easy use, simplicity and ability to tilt the instrument back at a 30 degree angle.
Appearance	It is designed to be convenient for work as well as ergonomin, sturdy and lighweight desgin with durable black anodized finish.

Convenience



- Convenient attaching & removing cast with Magnetic mounting plate.



- There is no tool required with simply using Accessory separating screw.



- Fully open access from the lingual position for easy access during enture setup so excellent to check lingual position when set in array.



- Handy hard box to carry

Adjustability



- Adjustable Condylar, Bennett inclination and Side shift system



- INCISAL GUIDANCE : Incisal table 10° & 20° and Incisal pin



- Easy use to tilt the instrument back at a 30 degree angle.

Calibration



**Precision,
Convenience,
Time-saving**



CSA 400 ARTICULATOR

Semi - adjustable articulator with a calibration system.

Condylar Angle(0°~50°)
/ Bennett Angle (Fixed at 15°)



CSA Series Articulators feature CALIBRATION System



Accurate & Precise results!

Function



Lock



Condylar Inclination



Incisal Pin

Convenience



Magnetic Plate



Plate & Finger screw

CSA 300 ARTICULATOR

Economical and Precision Easy use to tilt the instrument back at a 30 degree angle. Fully open access from the lingual position for easy access during denture setup so excellent to check lingual position when set array. Convenient attaching & removing cast with magnetic mounting plate.

average movement articulator

Condylar Angle(fixed at 25°) / Benntt Angle(fixed at 15°)



CSA Series Articulators feature CALIBRATION System



Accurate & Precise results!

CSA Accessory(Separately Sales)



CSA-13HO Median Point

CSA-36
Incisal Table
(ADJUS TABLE)

CSA-2500
Curve of Spee

CSA-1400
Average Mounting
Jig (LOWER)

CSA-1600
Occlusal Plane
Guide(UPPER)

CSA-1700
Cori Template

System

Calibration System with adjustable condylar inclination and ergonomic design

Precision

CSA400 articulator is the perfect choice for andlysis, treatment planning, and completion of even the most complex occlusal treatment.

Operation

It combines the advantages of easy use, simplicity and ability to tilt the instrument back at a 30 degree angle.

System

Average-valued type of Articulator Calibration system and Ergonomic desgjn

Precision

CSA300 articulator has been designed to be used accurately, safely and conveniently in all sectors of dental prosthetics such ad occlusion, treatment, analysis and so on.

Operation

It combines the advantages of easy use, simplicity and ability to tilt the instrument back at a 30 degree.

FACE BOW

Product no. FB-1500

CORI FACE BOW is designed to figure out the occlusion relation with easy and accuracy.

One touch screw of Universal joint is perfect for transfer with simple & accuracy



ONE TOUCH SYSTEM



Universal joint with Bite fork



Bow arm & Orbitale indicator



Transfer Jig



CSA600 With Face Bow



CSA400 With Face Bow

System

It is designed ergonomically so that the relationship of occlusion can be figured out easily.

Precision

The joints of Bite fork can be fixed by One touch screw at once and it can move left, right and centre freely.

Operation

Convenient operation by the simple designed structure.

SIMPLEX ARTICULATOR

Please try CORIDENT SIMPLEX ARTICULATOR to all precision prosthodontics.

Product no. E-200

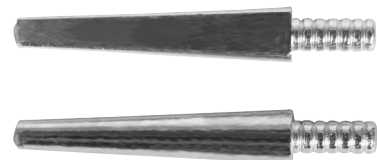


- Simple to use.
- Accessible to occlusion adjustment.
- Allowing vertical, hinge, lateral and slightly retrogressive movements.
- Remounting metal magnetic caps.
- Economical For convenience, even if incisal pin is removed, the upper frame can be maintained in a level position by using the rear adjusting screw.

SINGLE PIN

Designed dlaborately and has a unique shape in order to prevent distortion during pin(modeling) process.

SINGEL PIN DIMENSION(mm)				
L	L1	L2	D1	D2
21.00	16.65	5.00	1.80	2.00



F-202
Material : Zinc
nickel plated
Packing : 1,000/box



F-203
Material : Zinc
brass plated
Packing : 1,000/box

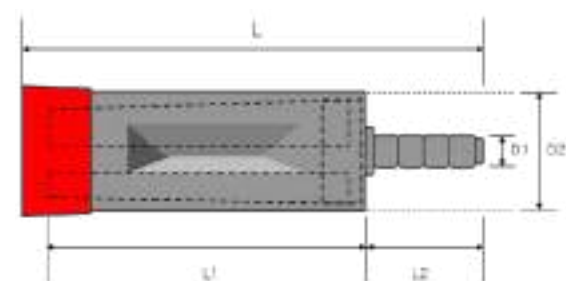
TWIN PIN

Product no. F-210

Male and Female parts are perfectly fitte without any torsion.
Male pin is combined very softly with Female(Sleeves).
The main materials is Zinc and Nickel plated.
Each rubber cap is packed individually for user's convenience.



Composition : 1,000 Sets/Box
Male Pins 1,000 Pcs
Female (Sleeves) 1,000 Pcs
Rubbers 1,000 Pcs



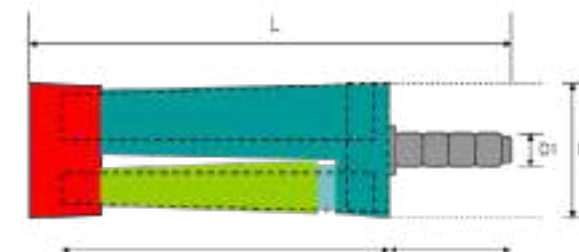
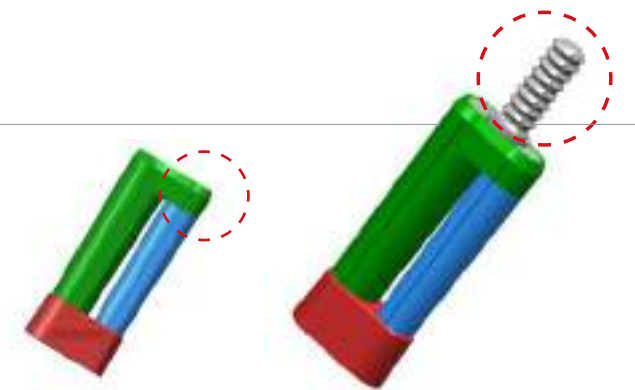
F-210(TWIN PIN 16mm) DIMENSION(mm)					
L	L1	L2	D1	D2	
21.00	16.65	5.00	1.80	2.00	

F-210-12SHORT(TWIN PIN 12.5mm) DIMENSION(mm)					
L	L1	L2	D1	D2	
21.00	16.65	5.00	1.80	2.00	

EURO PIN

Product no. F-300

Materials : Zinc, Nickel plated.
Pin : 1,000pcs
Plastic sleeve : 1,000pcs
Rubber cab : 1,000pcs / Box



- Introducing EURO PIN
 - Well received in Europe.
 - The female part has effective structure divided into two sleeves.

- EURO PIN has the function of compensating the hardening and expansion of anhydrite.

- The pin-head part is more extended and has a thin round plate; therefore it supports the pin stably, distinguishing it from other products.
- Thin structure of this part is for slight movement of it's sleeve with reflecting and compensating any change, caused by the expansion of the anhydrite.

F-300 EURO PIN DIMENSION(mm)					
L	L1	L2	D1	D2	
20	13.7	5.3	2	5.9	

PLUS PIN

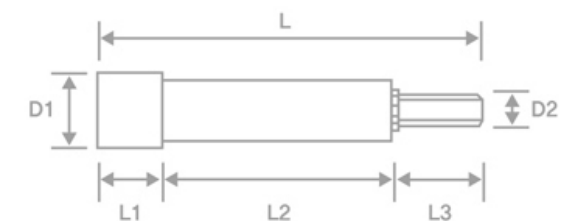
Product no. F-200

Materials: Zinc, Brass plated
Pin : 1,000 EA
Plastic sleeve : 1,000 EA
Rubber cap : 800 EA / Box



EXCELLENT REMOVABLE PIN

1. Plus pin wall perpendicularly (0 degree) parallel to female sleeve allows precision.
2. Miniature cross shape pin will prevent distortion.
3. Black colored rubber cap help easily find the position of pin on the bottom of poured stone cast.
4. Plus pin require only minimum space and it'll be easy to trim die and cast.



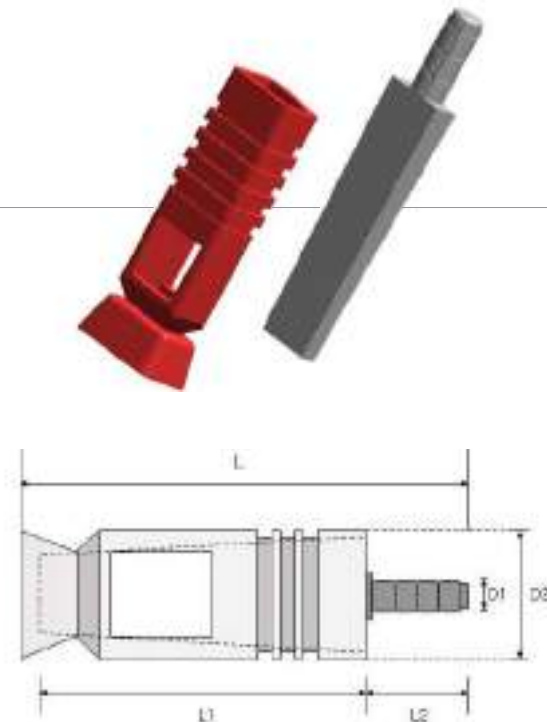
PLUS PIN DIMENSION(mm)						
L	L1	L2	L3	D1	D2	
21.00	3.20	13.00	5.00	5.00	2.0	

TELESCOP SOFT PIN

Product No. F-110 & F-110-13

Materials: Zinc. Nickel plated
Pin: 1,000 EA
Plastic Sleeve: 1,000 EA/ Box

- Female sleeve of Telescop Soft pin is made of soft plastics.
- This soft female part provides users feeling tight in working with pin.
- The united shape of sleeve-body and bottom-cap reduces users' bother to put the cap on the pin.
- The specially thin parts in the united bottom cap helps to be separated easily from sleeve body.
- Female's keeping hole can catch male securely.



► F110 TELESCOP SOFT PIN

L	L1	L2	D1	D2
21.5	15.4	5	2	5.34

► F110-13 SHORT TELESCOP SOFT PIN

L	L1	L2	D1	D2
18.9	12.95	5	2	5.15

IMPLANT TRAY

Product No. B200 & B200-01

Metal Tray : 4 Pcs. / Set
LARGE TRAY-UPPER & LOWER Parts
MEDIUM TRAY-UPPER & LOWER Parts
Plastic Cover : 210 EA/Set
105 ea. For L1~L7 parts-15 ea. of each parts
105 ea. For M1~M7 parts-15 ea. of each parts



- CORIIMPLANT TRAY is harmless to human with firm aluminum body which is strong, secure and can be disinfected in the high temperature.
- CORIMPLANT TRAY's transparent plastic cover are composed of 7 pieces which allow to see the screw zone and while get impression and to make the hole in the exact position of the cover. Also the each cover parts can be separated from each other and tray for user's convenience.
- It is convenient to get the impression without making individual try since the plastic part can be detached from the implant screw.
- It is more economic than individual tray and disposable tray.

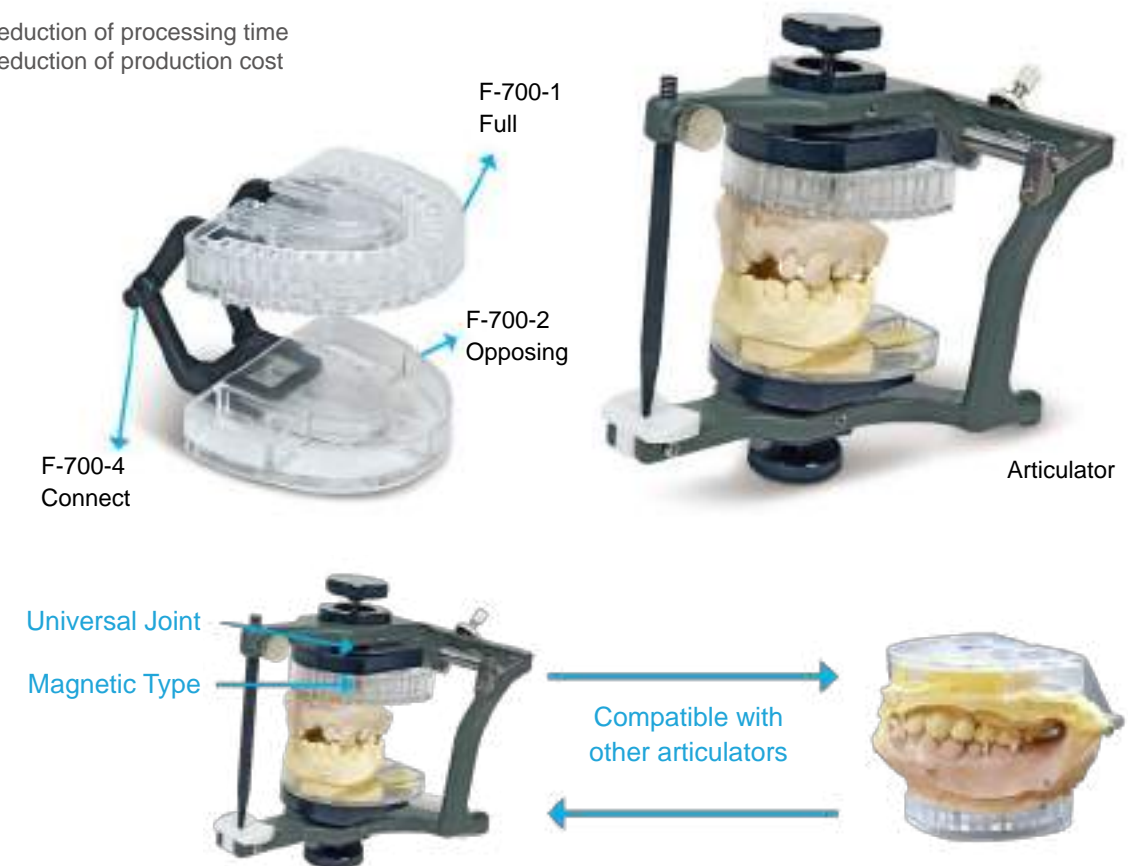


PIN SYSTEM

diarc

Product No. F-700

- Reduction of processing time
- Reduction of production cost



PIN SYSTEM + Mounting > Only Takes "30 minutes"

- Pin work and Mounting can be proceeded at the same time
- Existing Pin System takes 8 hours to finish, but CORI Pin system only takes 30minutes.
- It is compatible with other Articulators.
- Time saving, higher accuracy, and more convenient.
- Pin mold and articulator can be separated, so it is easy to install on surveyors.

