

ARUM DIGITAL SOLUTIONS 2024-25



INDEX

| | |
|---|-------|
| About us | 3 |
| ARUM Digital Dentistry Workflow | 4-5 |
| ARUM Milling Machine Line-up | 6-7 |
| 5X-200 | 8-11 |
| 5X-500 | 12-15 |
| 5X-500L | 16-19 |
| 5X-450 | 20-23 |
| 5X-400 | 24-27 |
| 5X-300Pro | 28-31 |
| 5X-300D | 32-33 |
| CAM Program [ApexMill] | 34-36 |
| ARUM 3D Printer System [3D Printer & UV curing & Resin] | 37 |
| Zirconia Block [ARENA] | 38 |
| CAD/CAM etc. | 39-40 |
| Digital Prosthetics | 41-50 |
| Intraoral Scanbody | 41 |
| Model Scanbody & Screw | 42 |
| Pre-milled Blank & Attachment & AT Wrech | 43 |
| Ti-Base & Analog | 44 |
| Clinical Driver | 45 |
| Lab Driver [iPen] | 46 |
| Digital Prosthetics Line-up | 47-50 |



The Leading Company in Digital Dentistry. **ARUM DENTISTRY**

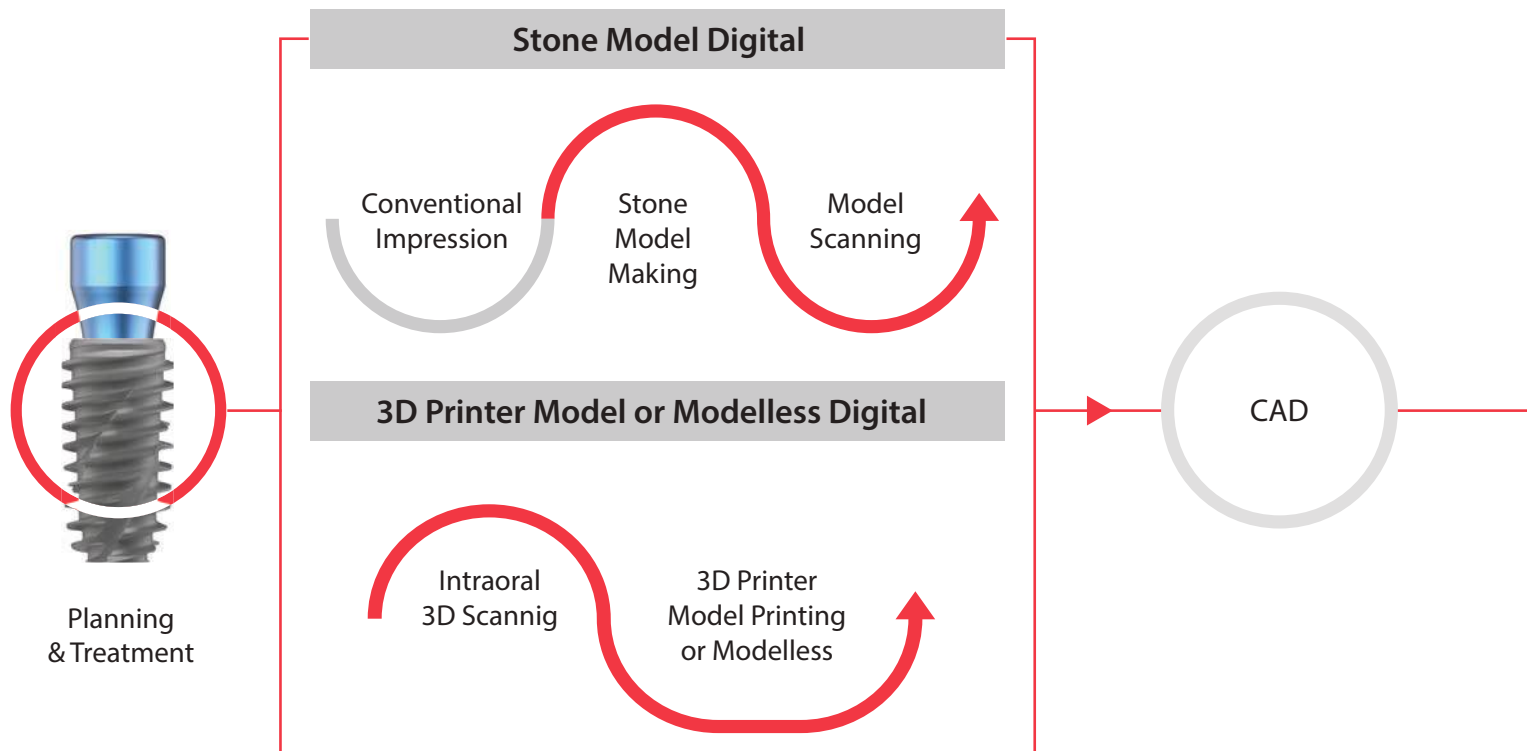
Founded in 2000 as a leader in the digital dentistry solution, ARUM DENTISTRY has been providing Digital Total Solution for prosthetic treatment based on a digital prosthesis production solution (Dental CAD/CAM milling machine, dental materials) such as 3D Printer System (Metal, LCD, DLP, Resin, UV curing machine, etc.), Zirconia Block Implant and CAM Software, thereby leading the digital dentistry market.

ARUM DENTISTRY has invigorated the patent-customized abutment by utilizing industry's first pre-milled blank machining. With the worldwide CAD/CAM processing machining cases accumulated over the last 20 years, ARUM DENTISTRY has built the world's largest library & dental material line-up and is expanding the line-up through continuous product development.

ARUM DENTISTRY is building its unrivalled competitiveness through the meticulous inspection of all products, continued efforts to acquire international licenses (KGMP, FDA, CE, NMPA, PMDA), and customer support and A/S within 24 hours with the aim of realizing the highest-level quality management.

Taking the lead in innovating the world's most differentiated technologies, ARUM DENTISTRY has been exporting its products to more than 70 countries, earning recognition from users around the world for its technology. ARUM DENTISTRY is advancing towards Digital Dentistry Innovation by constantly listening to the voices of customers and endeavouring to research and develop advanced technologies.

ARUM Digital Dentistry Workflow



NB System



Implant Surgical Kit



Digital Prosthetics



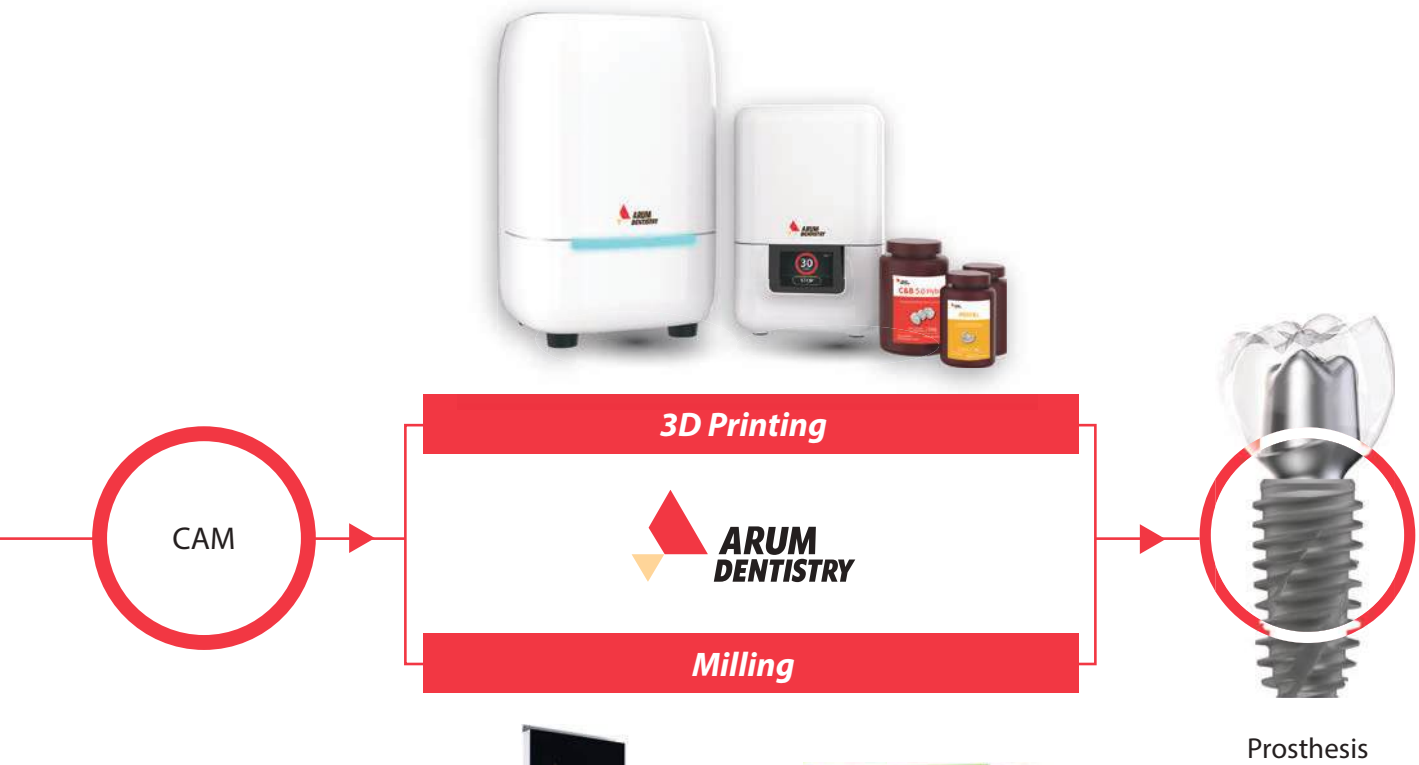
F1 Plasma



With use of products of ARUM DENTISTRY from planning & treatment and CAD/CAM design to prosthesis production, Digital Dentistry becomes fun for you.

You can realize simple prosthesis production and prosthetic treatment using ARUM Digital Dentistry Solution that features: "Fixture Design (Patent No. 10-2118038)" allowing rapid formation of new bones by the distribution of the stress on the upper part of the fixture to prevent fracture and facilitate smooth blood flow in the screw part (Patent No.

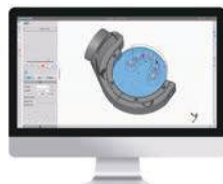
10-2118038); "Excellent Machining Precision of CAD / CAM milling machine recognized in the world market over the last 20 years; "Accurate and Excellent Quality Dental Material" that went through total inspection process (Ti 6Al-4V ELI / stainless steel 303F); "Zirconia Block" boasting its strength and natural shade, and "3D Printer System"(Printer, UV curing machine, Resin) boasting its fast printing speed and accuracy, you can realize simple prosthesis production and prosthetic treatment.



Milling Machine



ApexMill



ARENA & ARENA Star



Resin & 3D Printer
& UV Curing Machine



ARUM Milling Machine Line-up



| Model | | 5X-200 | 5X-500 | 5X-500L |
|-----------------------------|------------|-----------------|----------------------|----------------------|
| Axis | | 5 Axis | 5 Axis | 5 Axis |
| Processing | | Wet and Dry | Wet and Dry | Wet and Dry |
| Max. RPM | | 60,000 | 60,000 | 60,000 |
| Spindle Power | | DC 3.0kw | AC 2.2kw | AC 2.2kw |
| A.T.C | | 15 | 20 | 20 |
| Tool Shank (mm) | | Ø6 | Ø6 | Ø6 |
| Motor | | Servo | Servo | Servo |
| Drive Mechanism | | Ball Screw | Ball Screw | Ball Screw |
| Way System | | Linear Guide | Linear Guide | Linear Guide |
| Total Size (W*D*H) | | 815*949*1755mm | 689*918*1706mm | 1078*921*1713mm |
| Weight (Machine / Table) | | 270kg / 135kg | 230kg / 65kg | 360kg / 110kg |
| Travel | X,Y,Z axis | 325*142.5*144mm | 227.5*125*131mm | 227.5*125*131mm |
| | A / B axis | 360° / ±30° | 360° / +40° ~ -31.5° | 360° / +40° ~ -31.5° |
| Disk Jig or Cartridge Type | | O type | O type, C type | O type, C type |
| Number of Jig | | - | - | 12 |
| Jig exchange | | - | - | Auto |
| Materials | | | | |
| Pre-milled Blank (Titanium) | | ◎ (5ea) | ◎ (10ea) | ◎ (10ea) |
| Co-Cr & Ni-Cr Disk | | ◎ | ○ | ○ |
| Titanium Disk | | ◎ | ◎ | ◎ |
| Lithium Disilicate | | ○ | ○ | ○ |
| Nanocomposite | | ◎ | ◎ | ◎ |
| Zirconia | | ◎ | ◎ | ◎ |
| PMMA | | ◎ | ◎ | ◎ |
| PEEK | | ◎ | ◎ | ◎ |
| Wax | | ◎ | ◎ | ◎ |
| Applications | | | | |
| Implant Bar | | ◎ | ◎ | ◎ |
| Screw-Retained Bridge | | ◎ | ◎ | ◎ |
| Customized Abutment | | ◎ | ◎ | ◎ |
| Hybrid Abutment | | ◎ | ◎ | ◎ |
| Inlay & Onlay | | ◎ | ◎ | ◎ |
| Crown & Coping | | ◎ | ◎ | ◎ |
| Crown & Coping Bridge | | ◎ | ◎ | ◎ |
| Model | | ◎ | ◎ | ◎ |
| Bite Splint | | ◎ | ◎ | ◎ |
| Denture | | ◎ | ◎ | ◎ |
| Page | | 8-11p | 12-15p | 16-19p |



* Products are subject to change without notice to improve quality, function, design or otherwise. / ©: High Compatibility / O: Compatibility / X: Non-Compatibility

ARUM 5X-200 Complete Ultimate System



Co-Cr

Ni-Cr

Titanium

PMMA

Zirconia

Resin

Wax

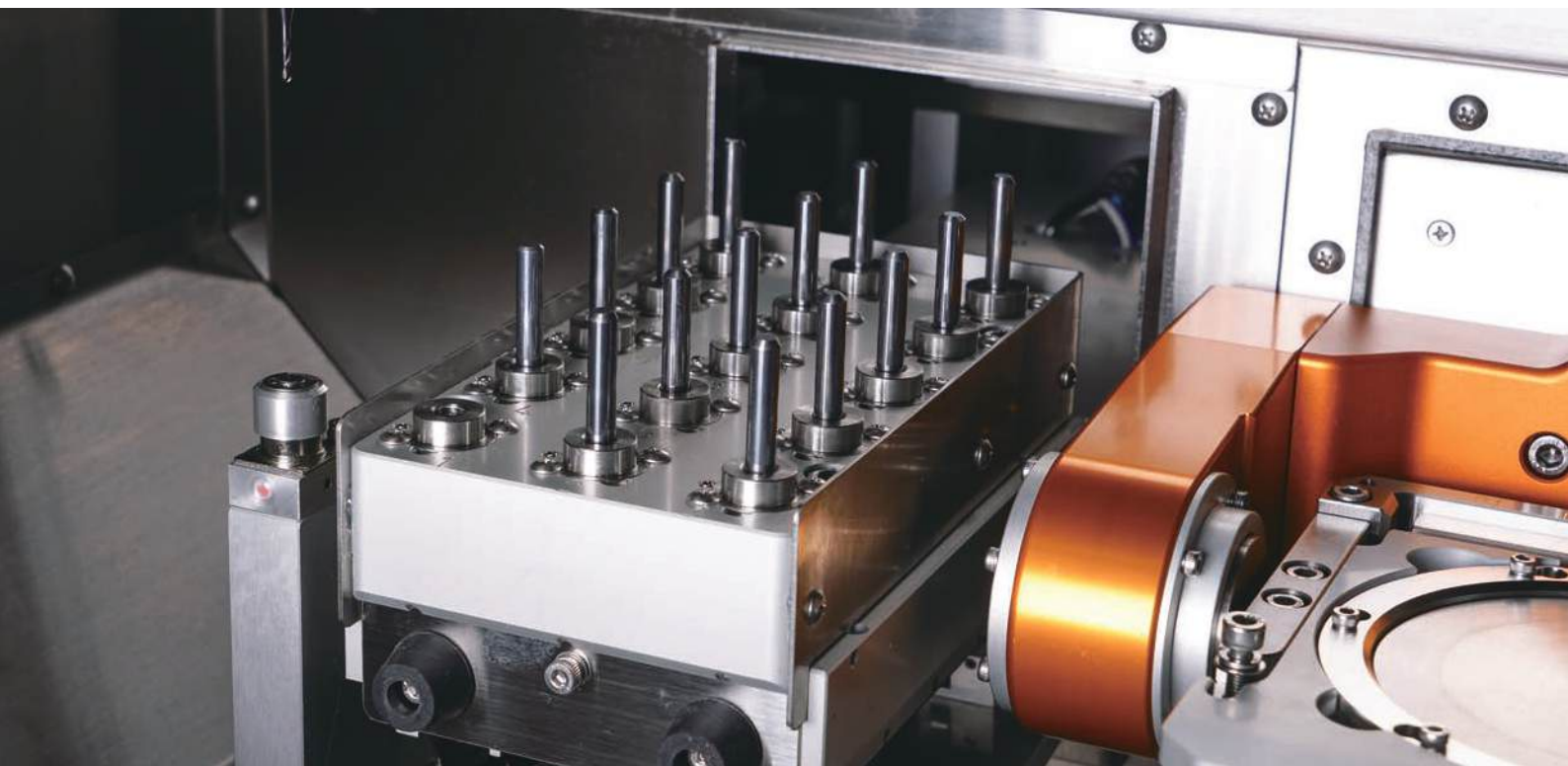
Customized Abutment



A standard of METAL milling

This machine can be compared with none of the metal milling machine. You can mill various shapes such as Implant Bar Bridge, Screw-retain Bridge, and Partial Framework using various materials such as Titanium, Co-Cr, and Ni-Cr, etc.

Based on unsurpassed metal milling capability and extensive know-how accumulated over many years, the excellence of our product has been proven in the global market.





Mounting of 5 pre-milled blanks

With a function of mounting of 5 pre-milled blanks simultaneously. Also, you can product Customized Abutment without Connector with AT Holder. In addition, it is possible to process using the Straumann PMAB holder (Bushing type) exclusively for Straumann Pre-milled Blanks, so it has expandability.



Amazing milling power

With DC 3.0kw spindle, Servo Motor & Linear Guide, you can mill any dental material such as Titanium, Co-Cr, Pre-milled Blank, Zirconia, Lithium Disilicate, Nanocomposite, PMMA, PEEK, and WAX and more.



Special tool designed for perfection

The optimal tool designed to increase the completeness of milling. With use of ARUM's special tools such as Drill Tool, Reamer Tool, and Thread Tool, etc., you can achieve the best milling restoration.



DC
3.0kw



Wet



Dry



All Disk



Connectorless



CAD Block



Pre-milled



5Axis

Screw-Retained Bridge Crown & Coping

Co-Cr & Titanium Disk

Implant Bar &
Screw-Retained Bridge Coping



Materials & Applications Info.

| Materials | | Applications | |
|-----------------------------|---------|--|---|
| Pre-milled Blank (Titanium) | ◎ (5ea) | Implant Bar | ◎ |
| Co-Cr & Ni-Cr Disk | ◎ | Screw-Retained Bridge (Crown & Coping) | ◎ |
| Titanium Disk | ◎ | Customized Abutment | ◎ |
| Lithium Disilicate | ○ | Hybrid Abutment | ◎ |
| Nanocomposite | ◎ | Inlay & Onlay | ◎ |
| Zirconia | ◎ | Crown & Coping | ◎ |
| PMMA | ◎ | Crown & Coping Bridge | ◎ |
| PEEK | ◎ | Model | ◎ |
| Wax | ◎ | Bite Splint | ◎ |
| | | Denture | ◎ |

◎: High Compatibility / ○: Compatibility / X: Non-Compatibility

Accessories

| | | | | |
|---|---|---|---|---|
|  |  |  |  |  |
| Disk Cartridge | AT Holder | Attachment | Bushing | Straumann PMAB holder |

* Products are subject to change without notice to improve quality, function, design or otherwise.

Specifications

| | | | |
|-----------------|-------------|--------------------------|-------------------------------|
| Axis | 5-Axis | Drive Mechanism | Ball Screw |
| Processing | Wet and Dry | Way System | Linear Guide |
| Spindle Power | DC 3.0kw | Machine Size (W*D*H) | 815*949*941mm |
| Max. RPM | 60,000 | Total Size (W*D*H) | 815*949*1755mm |
| A.T.C | 15 | Weight (Machine / Table) | 270kg / 135kg |
| Tool Shank (mm) | Ø6 | Travel | X,Y,Z axis 325*142.5*144mm |
| Motor | Servo | | A / B axis 360° / ±30° |

Tool List

| Material | Code | Ø | Size | Material | Code | Ø | Size |
|------------------------------------|-------|-----|------------------|----------------|--------|------------|------------------|
| Zirconia | ZB-05 | 2.0 | D2.0*L20*55 | Glass ceramic | DG-21 | 1.0 | D1.0*L10*50 |
| | ZB-06 | 1.0 | D1.0*L14*53 | | DG-22 | 0.6 | D0.6*L08*50 |
| | ZB-07 | 0.6 | D0.6*L08*50 | | DG-37 | 2.5 | D2.5*L12*50 |
| | ZB-78 | 0.3 | D0.3*L06*50 | | DG-38 | 1.5 | D1.5*L10*50 |
| Metal (Premilled Blank/Disk) | MB-09 | 3.0 | D3.0*L12*50 | PMMA(Long) | PB-88 | 3.0 | D3.0*L20*55 |
| | MB-10 | 2.0 | D2.0*L12*50 | | PB-89 | 2.0 | D2.0*L20*55 |
| | MB-11 | 1.5 | D1.5*L10*50 | | PB-90 | 1.5 | D1.5*L18*58 |
| | MB-12 | 1.0 | D1.0*L10*50 | | PB-91 | 1.0 | D1.0*L13*55 |
| Metal(Disk) | MB-14 | 0.6 | D0.6*L03*50 | | PB-92 | 0.6 | D0.6*L10*55 |
| Metal (Reamer) | MR-01 | 3.5 | D3.5*L18*55*180° | PMMA(Denture) | PB-93 | 4.5 | D4.5*L25*60 |
| | MR-02 | 2.6 | D2.6*L18*55*180° | PMMA(Lollipop) | PB-94 | 3.0 | D3.0*L15*50 |
| | MR-05 | 2.3 | D2.3*L18*55*120° | T-cutter | TC-82 | 2.0 | D2.0*L08*50 |
| | MR-06 | 2.3 | D2.3*L18*55*90° | | TC-83 | 1.8 | D1.8*L08*50 |
| | MR-07 | 2.3 | D2.3*L18*55*30° | | TC-84 | 1.5 | D1.5*L08*50 |
| | MR-09 | 2.4 | D2.4*L18*55*70° | | TC-97 | 2.3 | D2.3*L07*50 |
| | MR-10 | 2.6 | D2.6*L18*55*30° | Flat endmill | MF-15 | 2.0 | D2.0*L18*55 |
| | MR-11 | 2.4 | D2.4*L18*55*140° | | MF-45 | 1.5 | D1.5*L07*50 |
| | MR-12 | 2.6 | D2.6*L18*55*90° | | MF-71 | 0.6 | D0.6*L05*50 |
| | MR-13 | 2.7 | D2.7*L18*55*70° | Bullnosemill | MFR-44 | 1.5 | D1.5*L07*R0.1*50 |
| | MR-14 | 2.3 | D2.3*L18*55*70° | | MFR-66 | 1.5 | D1.5*L14*R0.2*50 |
| | MR-15 | 2.3 | D2.3*L18*55*180° | | MFR-43 | 2.0 | D2.0*L18*R0.2*55 |
| | MR-16 | 2.4 | D2.4*L18*55*90° | Thread | TH-69 | M2.0*P0.4 | M2.0*P0.4 |
| Metal(Drill) | MD-18 | 1.5 | D1.5*L14*50 | | TH-70 | M1.4*P0.3 | M1.4*P0.3 |
| | MD-19 | 2.0 | D2.0*L18*55 | | TH-95 | M1.8*P0.35 | M1.8*P0.35 |
| | MD-73 | 1.1 | D1.1*L05*50 | | TH-99 | M1.6*P0.35 | M1.6*P0.35 |
| Zirconia (Long) | ZB-85 | 2.0 | D2.0*L25*60 | | | | |
| | ZB-86 | 1.0 | D1.0*L20*60 | | | | |
| | ZB-87 | 0.6 | D0.6*L10*60 | | | | |

ARUM 5X-500

The Leader of Middle Class Specialized



Customized Abutment

Titanium

Ni-Cr

Co-Cr

PMMA

Zirconia

Resin

Wax



Outstanding machining performance

5X-500 is a modal without a loader part. With it you can easily replace 4 types of jigs, which allows you to be able to freely machine from disk to pre-milled blank.



Excellent Precision and Durability

With ZERO Point system, you can achieve excellent origin point precision despite repeated jig replacement, which allows you to machine even complex shape stably. Servo Motor with built-in Absolute Encoder and Auxiliary Support compensates for even fine vibrations.



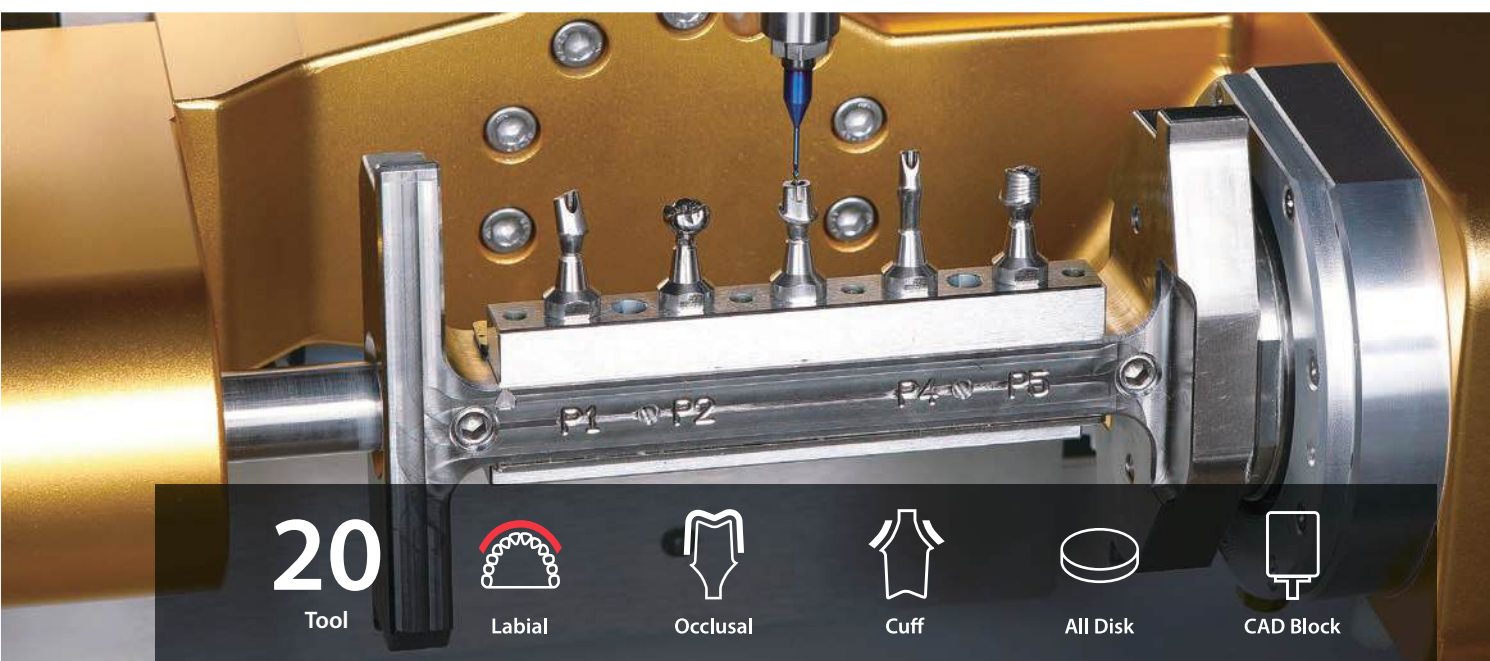
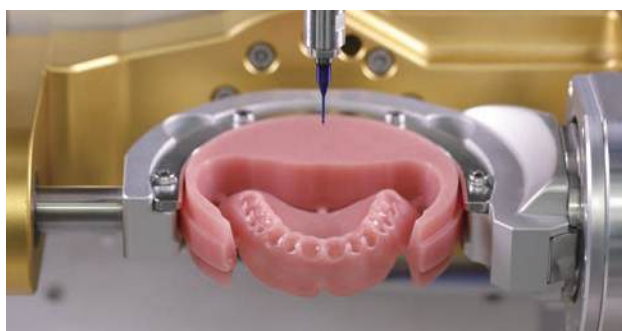
Best-in-class Spindle

With the powerful spindle from Sycotec in Germany, it boasts excellent performance in machining all dental CAD/CAM materials including metal (Co-Cr, Titanium, Ni-Cr)



Labial Side Machining

With Open C Type Jig, you can minimize time spent in precision machining and post-machining of labial (or Buccal) side texture and undercut area.



20

Tool



Labial



Occlusal



Cuff



All Disk



CAD Block

Materials & Applications Info.

| Materials | | Applications | |
|-----------------------------|----------|--|---|
| Pre-milled Blank (Titanium) | ◎ (10ea) | Implant Bar | ◎ |
| Co-Cr & Ni-Cr Disk | ○ | Screw-Retained Bridge (Crown & Coping) | ◎ |
| Titanium Disk | ◎ | Customized Abutment | ◎ |
| Lithium Disilicate | ○ | Hybrid Abutment | ◎ |
| Nanocomposite | ◎ | Inlay & Onlay | ◎ |
| Zirconia | ◎ | Crown & Coping | ◎ |
| PMMA | ◎ | Crown & Coping Bridge | ◎ |
| PEEK | ◎ | Model | ◎ |
| Wax | ◎ | Bite Splint | ◎ |
| | | Denture | ◎ |

◎: High Compatibility / ○: Compatibility / X: Non-Compatibility

Tool List

| Material | Code | Ø | Size | Material | Code | Ø | Size |
|------------------------------------|-------|-----|------------------|----------------|--------|------------|------------------|
| Zirconia | ZB-05 | 2.0 | D2.0*L20*55 | Glass ceramic | DG-21 | 1.0 | D1.0*L10*50 |
| | ZB-06 | 1.0 | D1.0*L14*53 | | DG-22 | 0.6 | D0.6*L08*50 |
| | ZB-07 | 0.6 | D0.6*L08*50 | | DG-37 | 2.5 | D2.5*L12*50 |
| | ZB-78 | 0.3 | D0.3*L06*50 | | DG-38 | 1.5 | D1.5*L10*50 |
| Metal (Premilled Blank/Disk) | MB-09 | 3.0 | D3.0*L12*50 | PMMA(Long) | PB-88 | 3.0 | D3.0*L20*55 |
| | MB-10 | 2.0 | D2.0*L12*50 | | PB-89 | 2.0 | D2.0*L20*55 |
| | MB-11 | 1.5 | D1.5*L10*50 | | PB-90 | 1.5 | D1.5*L18*58 |
| | MB-12 | 1.0 | D1.0*L10*50 | | PB-91 | 1.0 | D1.0*L13*55 |
| Metal(Disk) | MB-14 | 0.6 | D0.6*L03*50 | | PB-92 | 0.6 | D0.6*L10*55 |
| Metal (Reamer) | MR-01 | 3.5 | D3.5*L18*55*180° | PMMA(Denture) | PB-93 | 4.5 | D4.5*L25*60 |
| | MR-02 | 2.6 | D2.6*L18*55*180° | PMMA(Lollipop) | PB-94 | 3.0 | D3.0*L15*50 |
| | MR-05 | 2.3 | D2.3*L18*55*120° | T-cutter | TC-82 | 2.0 | D2.0*L08*50 |
| | MR-06 | 2.3 | D2.3*L18*55*90° | | TC-83 | 1.8 | D1.8*L08*50 |
| | MR-07 | 2.3 | D2.3*L18*55*30° | | TC-84 | 1.5 | D1.5*L08*50 |
| | MR-09 | 2.4 | D2.4*L18*55*70° | | TC-97 | 2.3 | D2.3*L07*50 |
| | MR-10 | 2.6 | D2.6*L18*55*30° | Flat endmill | MF-15 | 2.0 | D2.0*L18*55 |
| | MR-11 | 2.4 | D2.4*L18*55*140° | | MF-45 | 1.5 | D1.5*L07*50 |
| | MR-12 | 2.6 | D2.6*L18*55*90° | | MF-71 | 0.6 | D0.6*L05*50 |
| | MR-13 | 2.7 | D2.7*L18*55*70° | Bullnosemill | MFR-44 | 1.5 | D1.5*L07*R0.1*50 |
| | MR-14 | 2.3 | D2.3*L18*55*70° | | MFR-66 | 1.5 | D1.5*L14*R0.2*50 |
| | MR-15 | 2.3 | D2.3*L18*55*180° | | MFR-43 | 2.0 | D2.0*L18*R0.2*55 |
| | MR-16 | 2.4 | D2.4*L18*55*90° | Thread | TH-69 | M2.0*P0.4 | M2.0*P0.4 |
| Metal(Drill) | MD-18 | 1.5 | D1.5*L14*50 | | TH-70 | M1.4*P0.3 | M1.4*P0.3 |
| | MD-19 | 2.0 | D2.0*L18*55 | | TH-95 | M1.8*P0.35 | M1.8*P0.35 |
| | MD-73 | 1.1 | D1.1*L05*50 | | TH-99 | M1.6*P0.35 | M1.6*P0.35 |
| Zirconia (Long) | ZB-85 | 2.0 | D2.0*L25*60 | | | | |
| | ZB-86 | 1.0 | D1.0*L20*60 | | | | |
| | ZB-87 | 0.6 | D0.6*L10*60 | | | | |

Specifications

| | | | |
|-----------------|-------------|--------------------------|---------------------------------|
| Axis | 5-Axis | Drive Mechanism | Ball Screw |
| Processing | Wet and Dry | Way System | Linear Guide |
| Spindle Power | AC 2.2kw | Machine Size (W*D*H) | 689*918*839mm |
| Max. RPM | 60,000 | Total Size (W*D*H) | 689*918*1706mm |
| A.T.C | 20 | Weight (Machine / Table) | 230kg / 65kg |
| Tool Shank (mm) | Ø6 | Travel | X,Y,Z axis 227.5*125*131mm |
| Motor | Servo | | A / B axis 360° / +40° ~ -31.5° |

Accessories

| | | | |
|---|---|--|---|
|  |  |  | |
| Premill Jig T Type | Disk Jig | Disk C Type Jig | |
|  |  |  |  |
| CAD Block Cartridge | Attachment | Calibration Master & Probe | Straumann PMAB holder |

* Products are subject to change without notice to improve quality, function, design or otherwise.

ARUM 5X-500L

The Leader of Middle Class Specialized



Loader Auto Change 12 Jig

Customized Abutment

Titanium

Ni-Cr

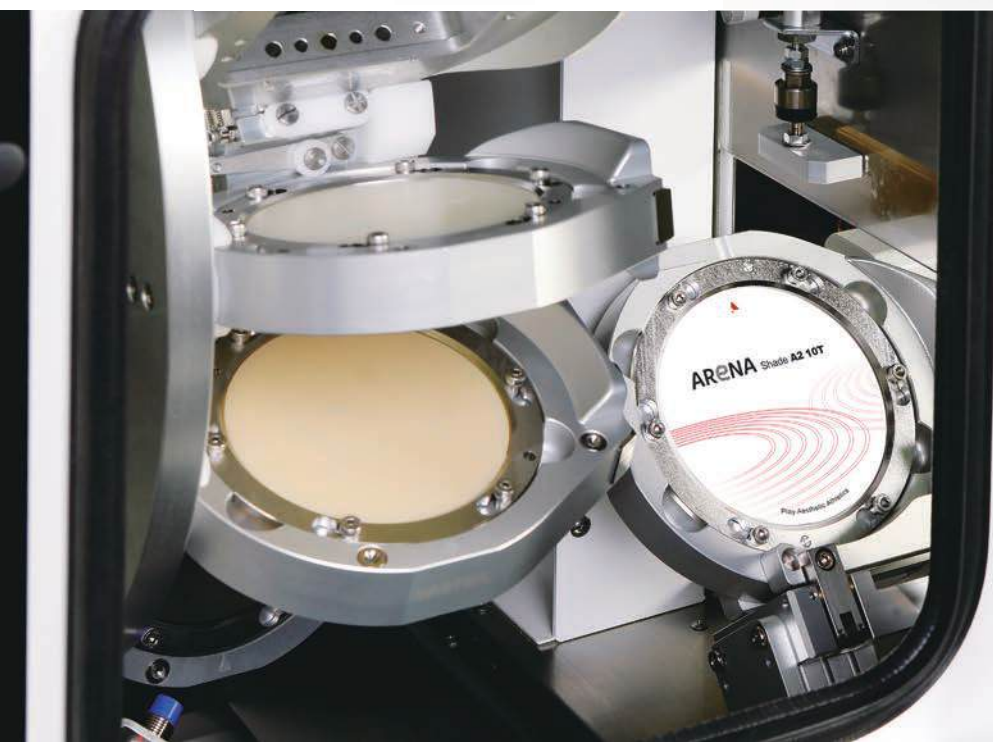
Co-Cr

PMMA

Zirconia

Resin

Wax



Excellent Precision and Durability

With ZERO Point system, you can achieve excellent origin point precision despite repeated jig replacement, which allows you to machine even complex shape stably. Servo Motor with built-in Absolute Encoder and Auxiliary Support compensates for even fine vibrations.



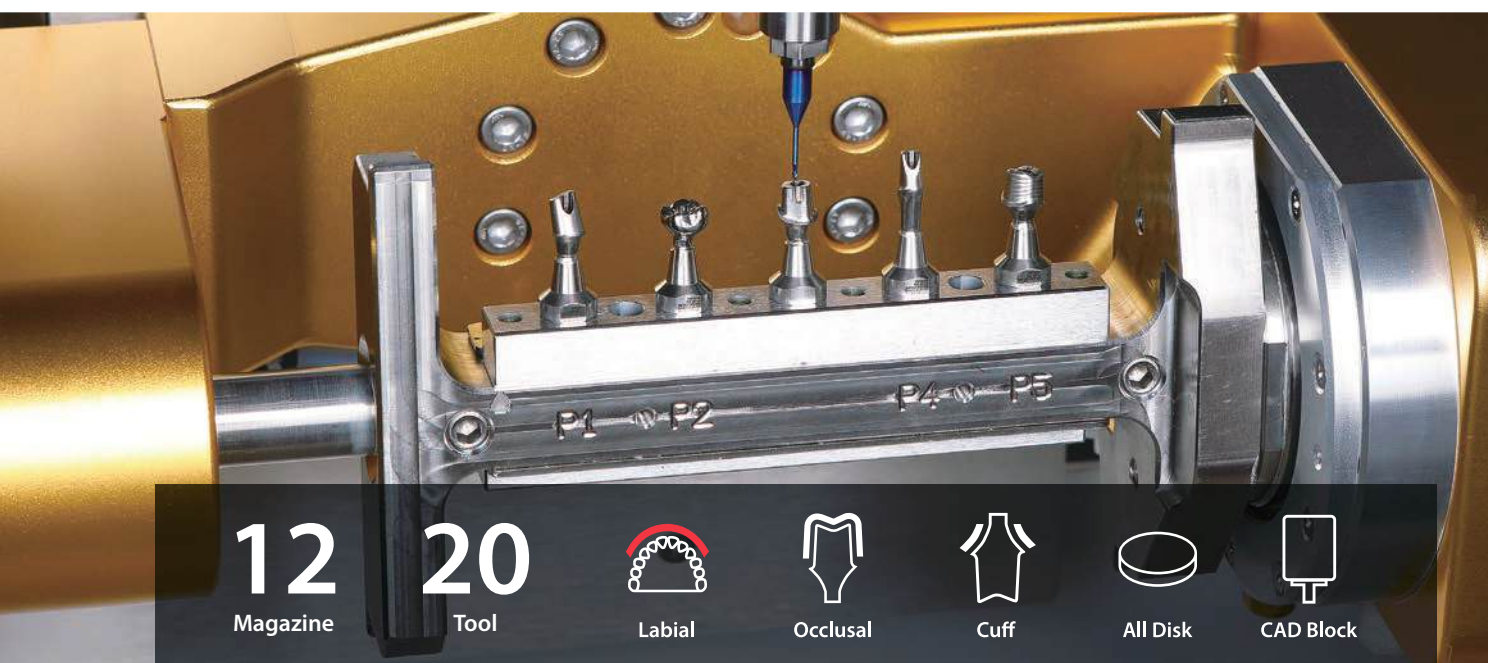
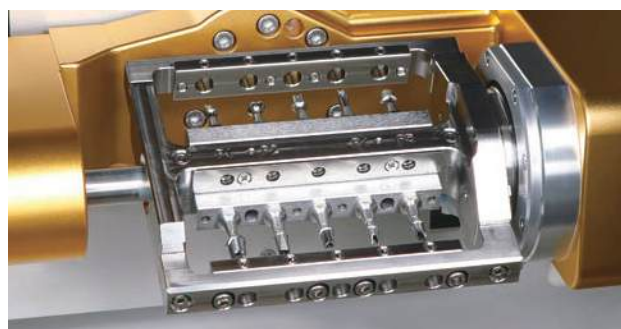
Best-in-class Spindle

With the powerful spindle from Sycotec in Germany, it boasts excellent performance in machining all dental CAD/CAM materials including metal (Co-Cr, Titanium, Ni-Cr).



Labial Side Machining

With Open C Type Jig, you can minimize time spent in precision machining and post-machining of labial (or Buccal) side texture and undercut area.



12
Magazine

20
Tool

Labial

Occlusal

Cuff

All Disk

CAD Block

Materials & Applications Info.

| Materials | | Applications | |
|-----------------------------|----------|--|---|
| Pre-milled Blank (Titanium) | ◎ (10ea) | Implant Bar | ◎ |
| Co-Cr & Ni-Cr Disk | ○ | Screw-Retained Bridge (Crown & Coping) | ◎ |
| Titanium Disk | ◎ | Customized Abutment | ◎ |
| Lithium Disilicate | ○ | Hybrid Abutment | ◎ |
| Nanocomposite | ◎ | Inlay & Onlay | ◎ |
| Zirconia | ◎ | Crown & Coping | ◎ |
| PMMA | ◎ | Crown & Coping Bridge | ◎ |
| PEEK | ◎ | Model | ◎ |
| Wax | ◎ | Bite Splint | ◎ |
| | | Denture | ◎ |

◎: High Compatibility / ○: Compatibility / X: Non-Compatibility

Tool List

| Material | Code | Ø | Size | Material | Code | Ø | Size |
|------------------------------------|-------|-----|------------------|----------------|--------|------------|------------------|
| Zirconia | ZB-05 | 2.0 | D2.0*L20*55 | Glass ceramic | DG-21 | 1.0 | D1.0*L10*50 |
| | ZB-06 | 1.0 | D1.0*L14*53 | | DG-22 | 0.6 | D0.6*L08*50 |
| | ZB-07 | 0.6 | D0.6*L08*50 | | DG-37 | 2.5 | D2.5*L12*50 |
| | ZB-78 | 0.3 | D0.3*L06*50 | | DG-38 | 1.5 | D1.5*L10*50 |
| Metal (Premilled Blank/Disk) | MB-09 | 3.0 | D3.0*L12*50 | PMMA(Long) | PB-88 | 3.0 | D3.0*L20*55 |
| | MB-10 | 2.0 | D2.0*L12*50 | | PB-89 | 2.0 | D2.0*L20*55 |
| | MB-11 | 1.5 | D1.5*L10*50 | | PB-90 | 1.5 | D1.5*L18*58 |
| | MB-12 | 1.0 | D1.0*L10*50 | | PB-91 | 1.0 | D1.0*L13*55 |
| Metal(Disk) | MB-14 | 0.6 | D0.6*L03*50 | | PB-92 | 0.6 | D0.6*L10*55 |
| Metal (Reamer) | MR-01 | 3.5 | D3.5*L18*55*180° | PMMA(Denture) | PB-93 | 4.5 | D4.5*L25*60 |
| | MR-02 | 2.6 | D2.6*L18*55*180° | PMMA(Lollipop) | PB-94 | 3.0 | D3.0*L15*50 |
| | MR-05 | 2.3 | D2.3*L18*55*120° | T-cutter | TC-82 | 2.0 | D2.0*L08*50 |
| | MR-06 | 2.3 | D2.3*L18*55*90° | | TC-83 | 1.8 | D1.8*L08*50 |
| | MR-07 | 2.3 | D2.3*L18*55*30° | | TC-84 | 1.5 | D1.5*L08*50 |
| | MR-09 | 2.4 | D2.4*L18*55*70° | | TC-97 | 2.3 | D2.3*L07*50 |
| | MR-10 | 2.6 | D2.6*L18*55*30° | Flat endmill | MF-15 | 2.0 | D2.0*L18*55 |
| | MR-11 | 2.4 | D2.4*L18*55*140° | | MF-45 | 1.5 | D1.5*L07*50 |
| | MR-12 | 2.6 | D2.6*L18*55*90° | | MF-71 | 0.6 | D0.6*L05*50 |
| | MR-13 | 2.7 | D2.7*L18*55*70° | Bullnosemill | MFR-44 | 1.5 | D1.5*L07*R0.1*50 |
| | MR-14 | 2.3 | D2.3*L18*55*70° | | MFR-66 | 1.5 | D1.5*L14*R0.2*50 |
| | MR-15 | 2.3 | D2.3*L18*55*180° | | MFR-43 | 2.0 | D2.0*L18*R0.2*55 |
| | MR-16 | 2.4 | D2.4*L18*55*90° | Thread | TH-69 | M2.0*P0.4 | M2.0*P0.4 |
| | | | | | TH-70 | M1.4*P0.3 | M1.4*P0.3 |
| Metal(Drill) | MD-18 | 1.5 | D1.5*L14*50 | | TH-95 | M1.8*P0.35 | M1.8*P0.35 |
| | MD-19 | 2.0 | D2.0*L18*55 | | TH-99 | M1.6*P0.35 | M1.6*P0.35 |
| | MD-73 | 1.1 | D1.1*L05*50 | | | | |
| Zirconia (Long) | ZB-85 | 2.0 | D2.0*L25*60 | | | | |
| | ZB-86 | 1.0 | D1.0*L20*60 | | | | |
| | ZB-87 | 0.6 | D0.6*L10*60 | | | | |

Specifications

| | | | |
|-----------------|-------------|--------------------------|-----------------|
| Axis | 5-Axis | Way System | Linear Guide |
| Processing | Wet and Dry | Machine Size (W*D*H) | 1078*921*889mm |
| Spindle Power | AC 2.2kw | Total Size (W*D*H) | 1078*921*1713mm |
| Max. RPM | 60,000 | Weight (Machine / Table) | 360kg / 110kg |
| A.T.C | 20 | Travel | X,Y,Z axis |
| Tool Shank (mm) | Ø6 | | A / B axis |
| Motor | Servo | Number of Jig | 12 |
| Drive Mechanism | Ball Screw | Jig exchange | Auto |

Accessories

| | | |
|---|---|---|
|  |  |  |
| Disk Jig | Disk C Type Jig | Premill Jig |
|  |  |  |
| AT Holder | Premill Jig T Type | CAD Block Cartridge |
|  |  |  |
| Attachment | Calibration Master & Probe | Straumann PMAB holder |

* Products are subject to change without notice to improve quality, function, design or otherwise.



ARUM 5X-450

Faithful Mill for Main Prosthesis



Customized Abutment

Zirconia

PMMA

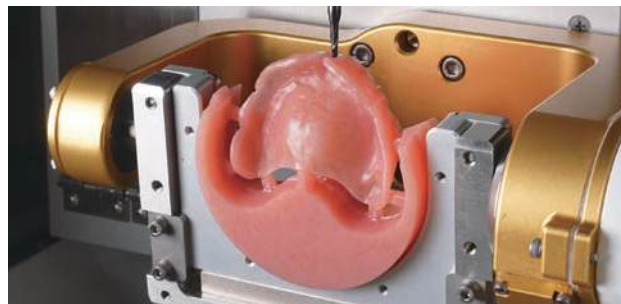
Resin



Milling of various prostheses

With use of open C type cartridge, you can precisely machine Labial Side (Buccal Side) and Under-Cut zone that requires additional machining. With the amazing power of the best-in-class spindle AC 1.28kw, you can machine various shapes and materials such as Denture, Zirconia, CAD Block, and Titanium milled Bar. etc.





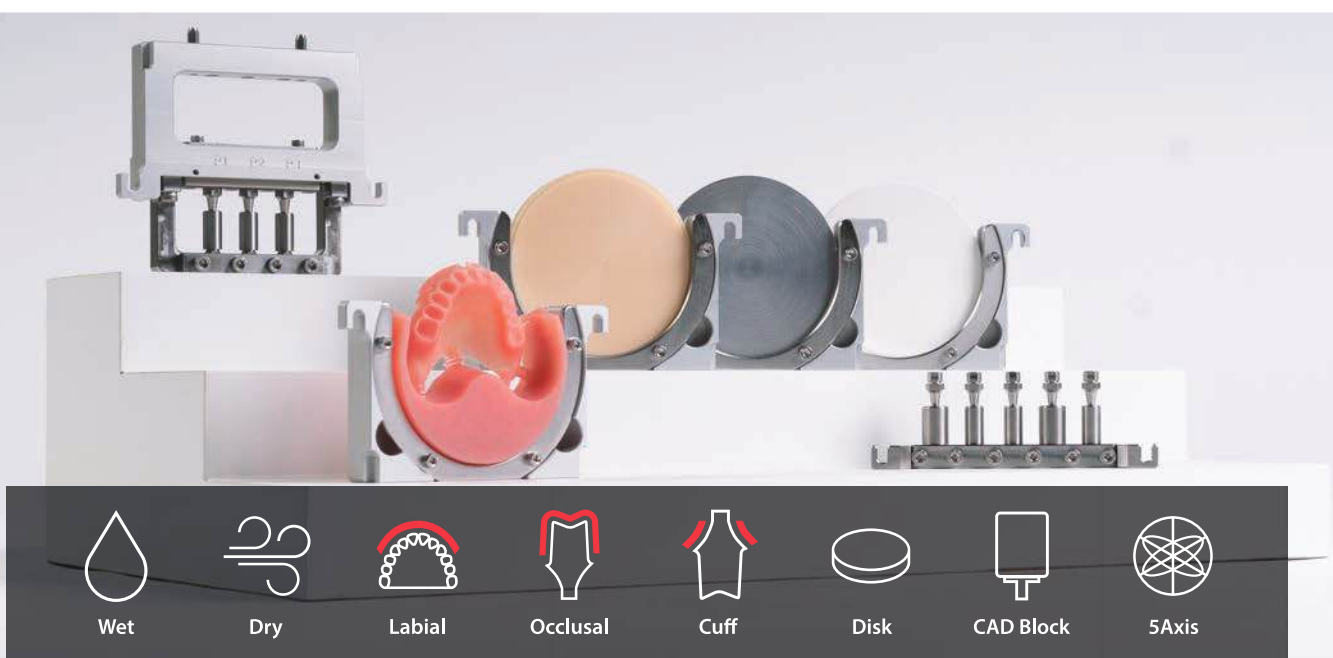
C-Type Cartridge

With use of open C type cartridge, you can precisely machine Labial Side (Buccal Side) and Under-Cut zone that requires additional machining.

Excellent Precision Using AT Cartridge

Differentiated round bar machining

You can machine Cuff Side (Gingival area), Occlusal Side, Connectorless, and Retention Groove in simple Top & Bottom Side milling using AT cartridge.



Titanium Disk



Zirconia Crown

Materials & Applications Info.

| Materials | | Applications | |
|-----------------------------|---------|--|---|
| Pre-milled Blank (Titanium) | ◎ (5ea) | Implant Bar | ◎ |
| Co-Cr & Ni-Cr Disk | X | Screw-Retained Bridge (Crown & Coping) | ◎ |
| Titanium Disk | ○ | Customized Abutment | ◎ |
| Lithium Disilicate | ○ | Hybrid Abutment | ◎ |
| Nanocomposite | ◎ | Inlay & Onlay | ◎ |
| Zirconia | ◎ | Crown & Coping | ◎ |
| PMMA | ◎ | Crown & Coping Bridge | ◎ |
| PEEK | ◎ | Model | ◎ |
| Wax | ◎ | Bite Splint | ◎ |
| | | Denture | ◎ |

◎: High Compatibility / ○: Compatibility / X: Non-Compatibility

Accessories

| | | |
|-------------------------|------------|-----------------------|
| | | |
| Disk Cartridge (C-Type) | AT Holder | AT Cartridge |
| | | |
| CAD Block Cartridge | Attachment | Straumann PMAB holder |

Specifications

| | | | |
|-----------------|-------------|--------------------------|--------------------------|
| Axis | 5-Axis | Drive Mechanism | Ball Screw |
| Processing | Wet and Dry | Way System | Linear Guide |
| Spindle Power | AC 1.28kw | Machine Size (W*D*H) | 791*791*790mm |
| Max. RPM | 60,000 | Total Size (W*D*H) | 791*791*1657mm |
| A.T.C | 15 | Weight (Machine / Table) | 185kg / 65kg |
| Tool Shank (mm) | Ø6 | Travel | X,Y,Z axis 245*116*130mm |
| Motor | Stepping | | A / B axis 360°/ ±35.1° |

Tool List

| Material | Code | Ø | Size | Material | Code | Ø | Size |
|------------------------------------|-------|-----|------------------|----------------|--------|------------|------------------|
| Zirconia | ZB-05 | 2.0 | D2.0*L20*55 | Glass ceramic | DG-21 | 1.0 | D1.0*L10*50 |
| | ZB-06 | 1.0 | D1.0*L14*53 | | DG-22 | 0.6 | D0.6*L08*50 |
| | ZB-07 | 0.6 | D0.6*L08*50 | | DG-37 | 2.5 | D2.5*L12*50 |
| | ZB-78 | 0.3 | D0.3*L06*50 | | DG-38 | 1.5 | D1.5*L10*50 |
| Metal (Premilled Blank/Disk) | MB-09 | 3.0 | D3.0*L12*50 | PMMA(Long) | PB-88 | 3.0 | D3.0*L20*55 |
| | MB-10 | 2.0 | D2.0*L12*50 | | PB-89 | 2.0 | D2.0*L20*55 |
| | MB-11 | 1.5 | D1.5*L10*50 | | PB-90 | 1.5 | D1.5*L18*58 |
| | MB-12 | 1.0 | D1.0*L10*50 | | PB-91 | 1.0 | D1.0*L13*55 |
| Metal(Disk) | MB-14 | 0.6 | D0.6*L03*50 | | PB-92 | 0.6 | D0.6*L10*55 |
| Metal (Reamer) | MR-01 | 3.5 | D3.5*L18*55*180° | PMMA(Denture) | PB-93 | 4.5 | D4.5*L25*60 |
| | MR-02 | 2.6 | D2.6*L18*55*180° | PMMA(Lollipop) | PB-94 | 3.0 | D3.0*L15*50 |
| | MR-05 | 2.3 | D2.3*L18*55*120° | T-cutter | TC-82 | 2.0 | D2.0*L08*50 |
| | MR-06 | 2.3 | D2.3*L18*55*90° | | TC-83 | 1.8 | D1.8*L08*50 |
| | MR-07 | 2.3 | D2.3*L18*55*30° | | TC-84 | 1.5 | D1.5*L08*50 |
| | MR-09 | 2.4 | D2.4*L18*55*70° | | TC-97 | 2.3 | D2.3*L07*50 |
| | MR-10 | 2.6 | D2.6*L18*55*30° | Flat endmill | MF-15 | 2.0 | D2.0*L18*55 |
| | MR-11 | 2.4 | D2.4*L18*55*140° | | MF-45 | 1.5 | D1.5*L07*50 |
| | MR-12 | 2.6 | D2.6*L18*55*90° | | MF-71 | 0.6 | D0.6*L05*50 |
| | MR-13 | 2.7 | D2.7*L18*55*70° | Bullnosemill | MFR-44 | 1.5 | D1.5*L07*R0.1*50 |
| | MR-14 | 2.3 | D2.3*L18*55*70° | | MFR-66 | 1.5 | D1.5*L14*R0.2*50 |
| | MR-15 | 2.3 | D2.3*L18*55*180° | | MFR-43 | 2.0 | D2.0*L18*R0.2*55 |
| | MR-16 | 2.4 | D2.4*L18*55*90° | Thread | TH-69 | M2.0*P0.4 | M2.0*P0.4 |
| Metal(Drill) | MD-18 | 1.5 | D1.5*L14*50 | | TH-70 | M1.4*P0.3 | M1.4*P0.3 |
| | MD-19 | 2.0 | D2.0*L18*55 | | TH-95 | M1.8*P0.35 | M1.8*P0.35 |
| | MD-73 | 1.1 | D1.1*L05*50 | | TH-99 | M1.6*P0.35 | M1.6*P0.35 |
| Zirconia (Long) | ZB-85 | 2.0 | D2.0*L25*60 | | | | |
| | ZB-86 | 1.0 | D1.0*L20*60 | | | | |
| | ZB-87 | 0.6 | D0.6*L10*60 | | | | |

ARUM 5X-400 Economical & Reasonable



Customized Abutment

Zirconia

PMMA

Resin



Unrivalled grinding capability

With the adoption of a high RPM specialized spindle, this equipment boasts its unrivalled capability of grinding Lithium Disilicate (Glass Ceramic). We improved user convenience by applying the cartridge that can mount and machine up to 6 CAD Blocks (Lithium Disilicate, Nanocomposite), and the application of high-precision ball screws allows you to get high quality machining outputs.





Your reasonable choice

You can machine various materials from Zirconia Disk to CAD Block, Pre-milled Blank, and select between wet and dry machining. You can enjoy the maximum results at a reasonable price.



User-friendly environment

With Auto Calibration Function, you can maintain the best condition of machine anytime, anywhere. You can always see a certain level of machining. U.I design makes operation of equipment easy and simple.

Like natural teeth

Every patient wants a prosthesis that looks natural. With milling the grooved part precisely using ARUM's 0.3mm tool for Zirconia, you can reproduce the teeth that look natural.





Crown & Coping Bridge
Lithium Disilicate



Zirconia Crown



Customized Abutment

Materials & Applications Info.

| Materials | | Applications | |
|-----------------------------|---------|--|---|
| Pre-milled Blank (Titanium) | ○ (2ea) | Implant Bar | ○ |
| Co-Cr & Ni-Cr Disk | X | Screw-Retained Bridge (Crown & Coping) | ○ |
| Titanium Disk | X | Customized Abutment | ○ |
| Lithium Disilicate | ◎ | Hybrid Abutment | ◎ |
| Nanocomposite | ◎ | Inlay & Onlay | ◎ |
| Zirconia | ◎ | Crown & Coping | ◎ |
| PMMA | ◎ | Crown & Coping Bridge | ◎ |
| PEEK | ◎ | Model | ◎ |
| Wax | ◎ | Bite Splint | ◎ |
| | | Denture | ○ |

◎: High Compatibility / ○: Compatibility / X: Non-Compatibility

Specifications

| | | | |
|-----------------|-------------|--------------------------|------------------------------|
| Axis | 5-Axis | Drive Mechanism | Ball Screw |
| Processing | Wet and Dry | Way System | Linear Guide |
| Spindle Power | AC 0.5kw | Machine Size (W*D*H) | 568*643*680mm |
| Max. RPM | 80,000 | Total Size (W*D*H) | 568*643*1616mm |
| A.T.C | 10 | Weight (Machine / Table) | 100kg / 65kg |
| Tool Shank (mm) | Ø4 | Travel | X,Y,Z axis 146*122.3*106.5mm |
| Motor | Stepping | | A / B axis ±35.2° / 360° |

Tool List

| Material | Code | Ø | Size | Material | Code | Ø | Size |
|--------------|--------|-----|-------------|------------------------|-------|-----|---------------|
| Zirconia | ZB-46 | 2.0 | D2.0*L18*50 | Glass ceramic | DG-52 | 2.5 | D2.5*L13*44.5 |
| | ZB-47 | 1.0 | D1.0*L16*50 | | DG-53 | 1.5 | D1.5*L10*44.5 |
| | ZB-48 | 0.6 | D0.6*L10*45 | | DG-54 | 1.0 | D1.0*L10*44.5 |
| | ZB-65 | 0.3 | D0.3*L06*45 | | DG-55 | 0.6 | D0.6*L08*41 |
| PMMA | MOB-56 | 3.0 | D3.0*L20*50 | T-Cutter | TC-80 | 1.8 | D1.8*L08*45 |
| | PB-49 | 2.0 | D2.0*L18*50 | | TC-98 | 2.0 | D2.0*L08*45 |
| | PB-50 | 1.5 | D1.5*L14*47 | Metal(Premilled Blank) | MB-58 | 2.0 | D2.0*L12*44 |
| | PB-51 | 1.0 | D1.0*L10*44 | | MB-59 | 1.5 | D1.5*L10*43 |
| Flat endmill | ZF-70 | 1.7 | D1.7*L18*50 | | MB-60 | 1.0 | D1.0*L08*42 |
| | ZF-75 | 0.6 | D0.6*L08*45 | | | | |

* Products are subject to change without notice to improve quality, function, design or otherwise.

Accessories



CAD Block Cartridge

ARUM 5X-300 Pro

Bright Future, Right System



Zirconia

PMMA

Resin

Wax

Ceramic Glass



Efficient C-TYPE JIG

Labial (or Buccal) side texture and undercut area precision processing minimize post-processing time.

Easy and easy material change

You can easily exchange from disk to CAD block as it uses cartridge type materials.



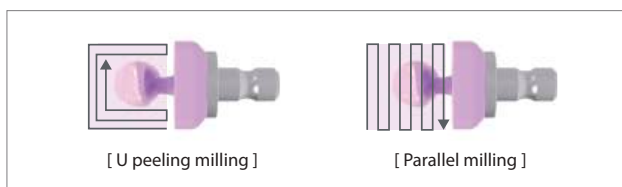


All in One System

An external compressor is not required, and all additional devices (Dust Collector, Coolant System) are built inside the table to overcome installation space constraint and minimize noise. ** German Renfert SILENT compact CAM model is used (optional)

High speed 80,000 RPM

By choosing one from 2 modes of roughing process (U peeling milling, and Parallel milling), you can process glass ceramic materials more effectively.

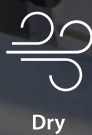


Excellent detail expression

Through groove, labial side texture precision processing using ARUM's exclusive 0.3mm tool for Zirconia, you can process prostheses close to natural teeth.



RPM
80,000





Zirconia Crown



Zirconia Hybrid Abutment



Crown & Coping Bridge

Materials & Applications Info.

| Materials | | Applications | |
|-----------------------------|---|--|---|
| Pre-milled Blank (Titanium) | X | Implant Bar | X |
| Co-Cr & Ni-Cr Disk | X | Screw-Retained Bridge (Crown & Coping) | X |
| Titanium Disk | X | Customized Abutment | X |
| Lithium Disilicate | ◎ | Hybrid Abutment | ◎ |
| Nanocomposite | ◎ | Inlay & Onlay | ◎ |
| Zirconia | ◎ | Crown & Coping | ◎ |
| PMMA | ◎ | Crown & Coping Bridge | ◎ |
| PEEK | ◎ | Model | ◎ |
| Wax | ◎ | Bite Splint | ◎ |
| | | Denture | ◎ |

◎: High Compatibility / O: Compatibility / X: Non-Compatibility

Specifications

| | | | |
|-----------------|-------------|--------------------------|----------------|
| Axis | 5-Axis | Drive Mechanism | Ball Screw |
| Processing | Wet and Dry | Way System | Linear Guide |
| Spindle Power | AC 0.5kw | Machine Size (W*D*H) | 568*638*645mm |
| Max. RPM | 80,000 | Total Size (W*D*H) | 568*641*1583mm |
| A.T.C | 12 | Weight (Machine / Table) | 90kg / 65kg |
| Tool Shank (mm) | Ø4 | Travel | X,Y,Z axis |
| Motor | Stepping | | A / B axis |

Tool List

| Material | Code | Ø | Size | Material | Code | Ø | Size |
|----------|--------|-----|-------------|---------------|-------|-----|---------------|
| Zirconia | ZB-46 | 2.0 | D2.0*L18*50 | Glass ceramic | DG-52 | 2.5 | D2.5*L13*44.5 |
| | ZB-47 | 1.0 | D1.0*L16*50 | | DG-53 | 1.5 | D1.5*L10*44.5 |
| | ZB-48 | 0.6 | D0.6*L10*45 | | DG-54 | 1.0 | D1.0*L10*44.5 |
| | ZB-65 | 0.3 | D0.3*L06*45 | | DG-55 | 0.6 | D0.6*L08*41 |
| PMMA | MOB-56 | 3.0 | D3.0*L20*50 | Flat endmill | ZF-70 | 1.7 | D1.7*L18*50 |
| | PB-49 | 2.0 | D2.0*L18*50 | | ZF-75 | 0.6 | D0.6*L08*45 |
| | PB-50 | 1.5 | D1.5*L14*47 | T-Cutter | TC-80 | 1.8 | D1.8*L08*45 |
| | PB-51 | 1.0 | D1.0*L10*44 | | TC-98 | 2.0 | D2.0*L08*45 |

Accessories

| | |
|---|--|
|  |  |
| Disk Cartridge (C-Type) | CAD Block Cartridge |

* Products are subject to change without notice to improve quality, function, design or otherwise.

ARUM 5X-300D

Looks Like Compact But Not Compact



Zirconia

PMMA

Resin

Wax



Efficient C-TYPE Cartridge

With use of open C type cartridge, you can precisely machine Labial Side (Buccal Side) and Under-Cut zone that requires additional machining.

Excellent detail expression

Every patient wants a prosthesis that looks natural. With milling the grooved part precisely using ARUM's 0.3mm tool for Zirconia, you can reproduce the teeth that look natural teeth.



RPM
60,000



Dry



Labial



Zirconia



CAD Block



5Axis

Materials & Applications Info.

| Materials | | Applications | |
|--------------------|---|-----------------------|---|
| Lithium Disilicate | X | Hybrid Abutment | ◎ |
| Nanocomposite | ◎ | Inlay & Onlay | ◎ |
| Zirconia | ◎ | Crown & Coping | ◎ |
| PMMA | ◎ | Crown & Coping Bridge | ◎ |
| PEEK | ◎ | Model | ◎ |
| Wax | ◎ | Bite Splint | ◎ |

◎: High Compatibility / ○: Compatibility / X: Non-Compatibility

Specifications

| | | | |
|-----------------|----------|----------------------|---------------|
| Axis | 5-Axis | Drive Mechanism | Ball Screw |
| Processing | Dry | Way System | Linear Guide |
| Spindle Power | AC 0.5kw | Machine Size (W*D*H) | 568*638*645mm |
| Max. RPM | 60,000 | Weight (Machine) | 90kg |
| A.T.C | 12 | Travel | X,Y,Z axis |
| Tool Shank (mm) | Ø4 | | A / B axis |
| Motor | Stepping | | |

Tool List

| Material | Code | Ø | Size | Material | Code | Ø | Size |
|----------|--------|-----|-------------|---------------|-------|-----|---------------|
| Zirconia | ZB-46 | 2.0 | D2.0*L18*50 | Glass ceramic | DG-52 | 2.5 | D2.5*L13*44.5 |
| | ZB-47 | 1.0 | D1.0*L16*50 | | DG-53 | 1.5 | D1.5*L10*44.5 |
| | ZB-48 | 0.6 | D0.6*L10*45 | | DG-54 | 1.0 | D1.0*L10*44.5 |
| | ZB-65 | 0.3 | D0.3*L06*45 | | DG-55 | 0.6 | D0.6*L08*41 |
| PMMA | MOB-56 | 3.0 | D3.0*L20*50 | Flat endmill | ZF-70 | 1.7 | D1.7*L18*50 |
| | PB-49 | 2.0 | D2.0*L18*50 | | ZF-75 | 0.6 | D0.6*L08*45 |
| | PB-50 | 1.5 | D1.5*L14*47 | T-Cutter | TC-80 | 1.8 | D1.8*L08*45 |
| | PB-51 | 1.0 | D1.0*L10*44 | | TC-98 | 2.0 | D2.0*L08*45 |

Accessories



Disk Cartridge (C-Type)

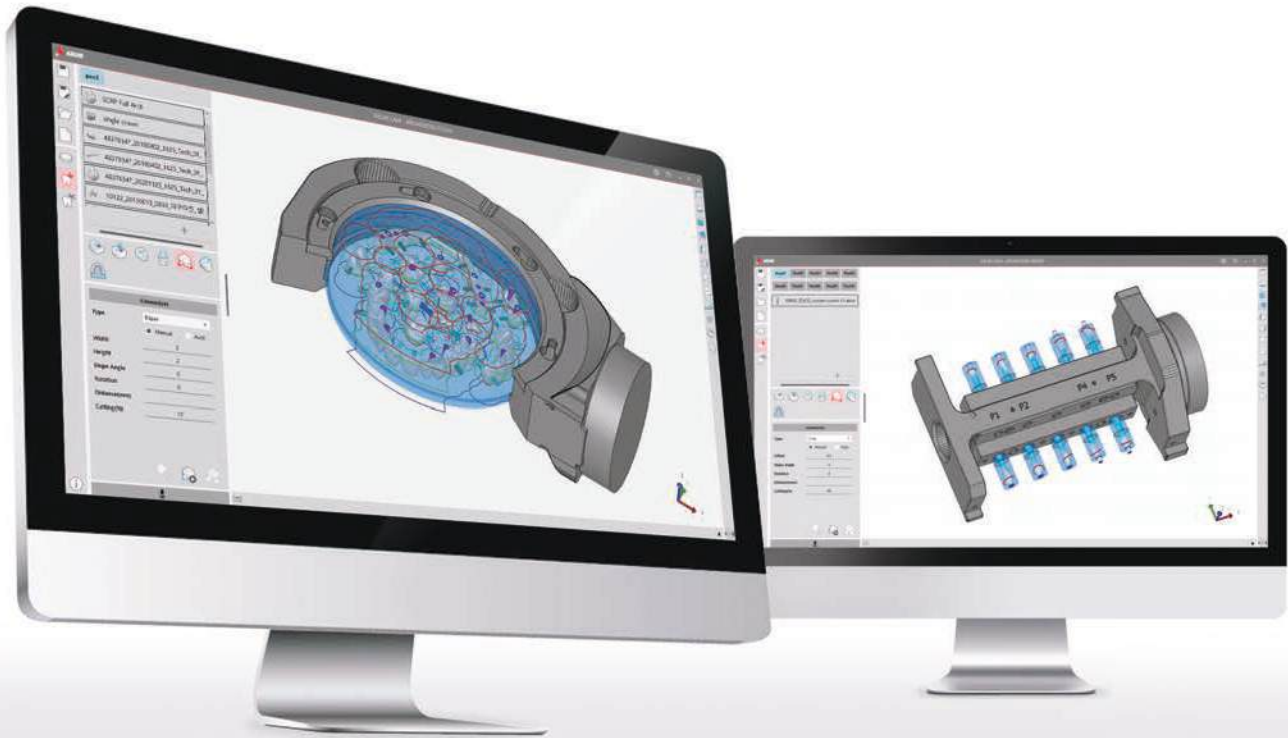


CAD Block Cartridge

* Products are subject to change without notice to improve quality, function, design or otherwise.

ApexMill

The Easy, The Fast, The Accurate



ApexMill is software in which all the machining know-hows of ARUM DENTISTRY are integrated. It is, above all, optimized for ARUM Milling Machine, and guarantees excellent machining quality. It provides a UI/UX environment that is easy for everyone to understand and all the core functions necessary for dental part machining. Now you can experience the most practical and most powerful CAM Design developed by ARUM DENTISTRY.

Line-up

| Line-up | | Premium 5X | ASC Edition | Basic 5X | Basic 4X |
|----------|---------------------|------------|-------------|----------|----------|
| function | Axis | 5 Axis | 5 Axis | 5 Axis | 4 Axis |
| | Nesting | ● | ● | ● | ● |
| | Simulation | ● | ● | ● | ● |
| | ASC | ● | ● | ● | - |
| | Interface Library | ● | ● | - | - |
| | Multi Start | ● | - | - | - |
| Support | Crown & Coping | ● | - | ● | ● |
| | Inlay, Onlay | ● | - | ● | ● |
| | SCRIP Crown, Hybrid | ● | - | ● | ● |
| | Abutment | ● | ● | ● | ● |
| | Barbridge | ● | ● | ● | ● |
| | Bitesplint | ● | - | ● | ● |
| | Denture | ● | - | ● | ● |
| | Partial | ● | - | ● | ● |
| | Surgical Guide | ● | - | ● | ● |

* Nesting : This feature allows users to arrange parts by rotating, moving, tilting, etc.

* Simulation : A simulation function to preview the outcome of NC creation.

* ASC : Angled Screw Channel.

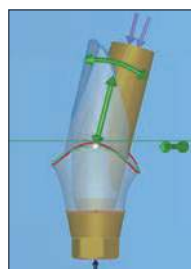
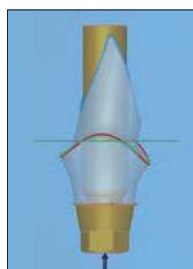
* Interface Library : A library function to attach an interface to the abutment.

* Multi Start : This is a function that enables users to run multiple programs simultaneously.



Interface Library

With two types of library provided, ie. Straight / Angle, you can machine a wider variety of shapes. By using angle type, you can set the screw channel hole in the direction of lingual surface to produce aesthetically excellent prostheses.



3-point SCRP production

You can form SCRP hole quickly and easily with 3-point click, and modify the height and diameter of the hole by entering numerical values or using a mouse. In addition, the boundary of the outer shape automatically changes according to the position of the hole, allowing the automatic detection of the possibility of collision between the tool and the material.



Easy margin line edition

You can delete the margin line requiring modification with just 3 clicks, and create new margin lines in a short time.



Individual undercut check

You can check the condition of the undercut individually, which allows you to be able to set the insertion direction of the tool faster and more conveniently. In addition, you can easily use the undercut view, the insertion direction modification, view insertion direction, and the occlusal surface machining direction setting using each of the provided icons.



A liberty to change the hole

You can even change the hole for distorted or scanned parts, and freely modify the height, diameter, direction, and position of the hole.

Open C-type jig machining

The use of C-type jig allows you to be able to easily machine thin and long anterior teeth and maximize the application of ApexMill.

Milling Sample of ApexMill Design



Straight Screw Channel



Angled Screw Channel



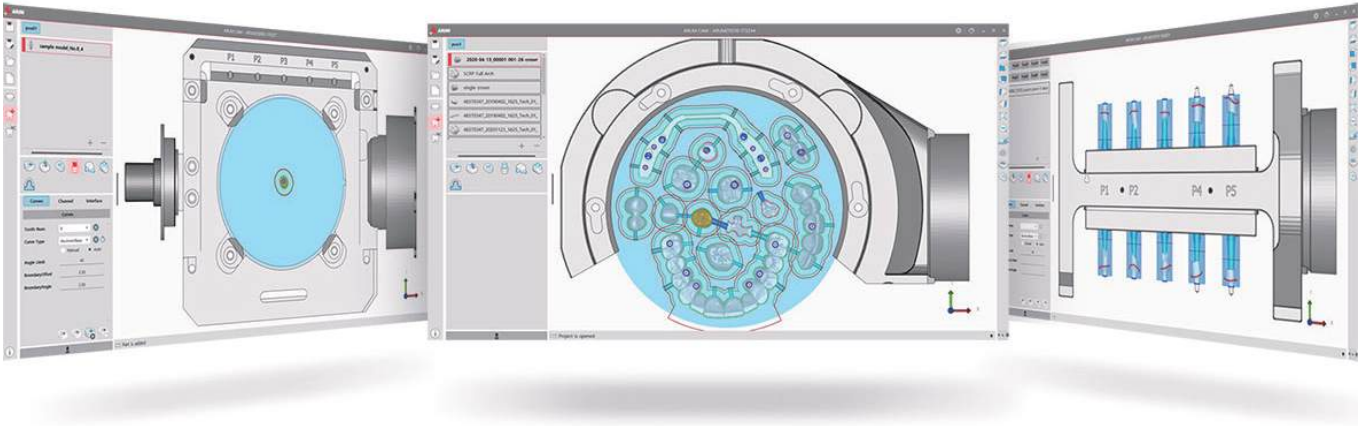
Customized Abutment & SCRP



Computer Recommended Specifications

| Division | Recommended Specifications | *Minimum Specifications |
|----------------------|----------------------------|-------------------------|
| Operating System | Windows 10x64 | Windows 7x64 |
| CPU | Intel i7, i9 3.6GHz | Intel i7 1.3GHz |
| Graphics Card (VRAM) | Nvidia (6GB) | 128 MB |
| RAM | 32 GB | 8 GB |
| HDD | 1 TB | 250 GB |

* Program can be operated normally, but there may be limitations when some high-performance features are required.



ARUM 3D Printer System

ARUM 3D Printer (LCD type)

- Resin tank change is easy
- Simultaneous control of Four 3D Printers
- Easy and quick LCD panel replacement
- Resin mixing function

| | |
|---------------------------|--------------------------------|
| LCD | 6"(2560 x 1620) Monochrome LCD |
| Build Volume (x/y/z - mm) | 115 × 70 × 70 |
| Pixel size (μm) | 50 |
| Projection Type | 405 nm UV LED Projection |
| Max Print Speed | 45 mm/h |
| Layer Thickness (μm) | 50 ~ 100 |
| Control Software | ARUM 3D Printer UI V1.0.0 |
| Slice Software | CHITUBOX Basic V1.9.0 |



ARUM UV Curing



- Surface gloss, internal strength, and short curing time
- Curing time that can be customized every minute
- Prevents distortion of output with the Chamber warm-up system
- Uniform and stable light irradiation in all directions with rotary turntable UV LAMP

| | |
|---|---------------|
| LED Wavelength (nm) | 405 |
| Appropriate operating temperature (°C) | 0~50 |
| Maximum curing chamber temperature (°C) | 50 |
| Internal Chamber (W×H×D mm) | 120×138.5×155 |
| Build plate (ø) | 110 |
| Electric Consumption (W) | 90 |
| Size (W×H×D) | 212×349×277 |
| Weight (kg) | 5.5 |

Curing Time

| Resin | Curing Time | | | | | | Temp. | AVG. Curing Time |
|-------------------|-------------|-------|--------|--------|--------|--------|-------|------------------|
| | 0 min | 5 min | 10 min | 15 min | 20 min | 30 min | | |
| C&B NFH Hybrid A1 | | | | | | | 50 °C | 10 min |
| C&B NFH Hybrid A2 | | | | | | | | 20 min |
| C&B NFH Hybrid A3 | | | | | | | | 30 min |

** Able to manufacture more accurate shade when adjusting the curing conditions depending on the user's environment

Zirconia Block

ARENA

Play Aesthetic Athletics

- Stable strength and shrinkage rate
- Excellent transparency and aesthetics
- Easy and simple coloring
- Quality control through thorough inspection
- 100% raw materials used by Tosoh



made from 100%
TOSOH
zirconia powder
Manufactured by
ARENA DENTAL CO., LTD.

FDA 510(k)
Cleared

CE
0068



Product Line-up

| Product | ARENA | | ARENA Star | | | |
|----------------|-------------------------|----------------------------|-------------------------|-------------------------|-------------------------------|-------------------------------|
| Type | Multi-Layered | Pre-shade | Multi-Layered | | Pre-shade | |
| | | | UM Disc. | SML Disc. | ST Disc. | HT Disc. |
| | | | | | | |
| Shade | VITA 16 Shade | VITA 16 Shade | VITA 16 Shade | VITA 16 Shade | VITA 16 Shade | VITA 16 Shade |
| Strength (Mpa) | 600 ~ 800 | 1,100 | 1,100 | 600 ~ 1,100 | 1,100 | 1,380 |
| Thickness (T) | 12/14/16/18 20/22/25 | 10/12/14/16/18 20/22/25 | 12/14/16/18 20/22/25 | 12/14/16/18 20/22/25 | 10/12/14/16/18 20/22/25/30 | 10/12/14/16/18 20/22/25/30 |
| Diameter (Ø) | 95, 98 | 95, 98 | 95, 98 | 95, 98 | 95, 98 | 95, 98 |

* Please Contact us for Diameter(Ø) 95 size .

* For Transparency, the specimen thickness is based on 1 mm.



[ARUM Colouring Liquid
A to Z]



[ARENA Star A2, A3, A3.5
Colouring Technique with
Zirconia A2 Block]



[ARENA Star A2, A3, A3.5
Colouring Technique with
Zirconia A3 Block]



[How to make A2, A3,
A3.5 Shade Using One
block]

CAD/CAM etc.

Materials



Titanium, Co-Cr, Ni-Cr Disk



Zirconia



PMMA



PEEK



Wax



Lithium Disilicate (Glass Ceramic)



Nanocomposite



Pre-milled Blank

CAD Program



CAM Program



Sintering Furnace



| Model | ARUM sintering furnace | HT-S 2/M Zirkon 120 |
|-----------------------|------------------------|---------------------|
| Max. Temperature (°C) | 1600 | 1,650 |
| Chamber Volume (mm) | 90*90*65 | Ø120*30 |
| Size (W*H*Dmm) | 375*490*385 | 390*790*500 |
| Weight (kg) | 33 | 60 |

**Dust
Collector**



| | |
|----------------|----------------------------|
| Model | Renfert SILENT Compact CAM |
| Size (W*H*Dmm) | 245*440*500 |
| Weight (kg) | 13 |

Intraoral Scanbody

- Raw Material Ti 6Al-4V ELI (ASTM F 136) Supplied by Germany
- Accurate tightening indicator "A Line"
- Easy and fast scan data matching
- Minimal gingival pressure and securement of gingiva
- Supports with the industry's largest number of implant systems and libraries



A Line

Indexes for the accurate fastening of implant fixtures and oral scan bodies and the prevention of the rotation of customized abutments.

Concave Line

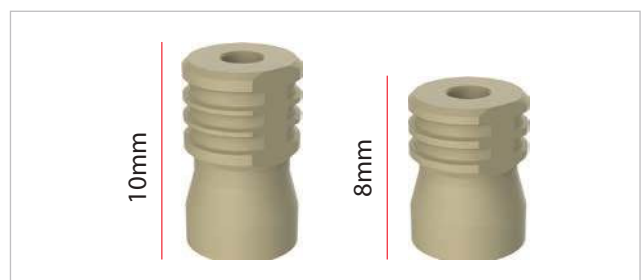
Concave Line to increase the completeness of dental procedure.
Minimization of gingival pressure
Securement of thick gingiva

Easy and accurate matching

Easy and accurate scan data and library matching by nuts, D-cut and slope.

Intraoral Scanbody Holder

Easy connect to fixture with intraoral scanbody holder
It is good for the complex case like molar procedure.
Possibility to select a suitable size with each different oral cavity



Model Scanbody

- Raw Material Stainless Steel 303F
- Industry's largest library
- Industry's largest implant system compatibility



Screw

- Raw Material Ti 6Al-4V ELI (ASTM F 136) Supplied by Germany
- All hand inspection of thread
- Industry's largest implant system compatibility



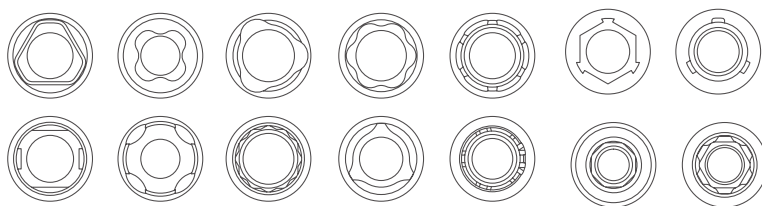
Pre-milled Blank

- Raw Material Ti 6Al-4V ELI (ASTM F 136) Supplied by Germany
- Industry's largest implant system compatibility
- Securement of quality through full-scale inspection
- Precision machined up to $\pm 5\mu\text{m}$



Diameter 10,14mm

We provide diameter of 10 and 14 mm for you to make Customized Abutments appropriate for various conditions of teeth. As they are compatible with more than 500 implant systems, you can machine using ARUM equipment.



AT Wrench

- Easy to use and storage
- Compatible with all ARUM Attachments
- Stainless Steel 304
- 120mm*30mm*3mm / 76g



Attachment

With use of Attachment, you can machine more sophisticated and near-perfect Customized Abutment.



Ti-Base

- Raw Material Ti 6Al-4V ELI (ASTM F 136) Supplied by Germany
- Industry's largest implant system compatibility
- Superior level of biocompatibility
- Combination of high fatigue strength



Analog



- Raw Material Stainless Steel 303F
- Industry's largest implant system compatibility
- Precision machined up to $\pm 5\mu\text{m}$
- For 3D print & stone model



Clinical Driver

- Use of Trimrite with excellent corrosion resistance
- Easy and simple cleaning
- For angle screw channels
- Heat treatment and hardness of 50 or more



| Size | Length | Order Code | Implant System | Recommend Torque |
|--|--------|------------|---|------------------|
|  Ball Torx | 22mm | BT1722 | 1. Most of angled screws of ARUM Ti-Base (screw head size is more than 2.1mm) 2. All implant system for disk angulated screw channels | 20 Ncm |
| | 15mm | BT1715 | | |
| | 8mm | BT1708 | | |
|  Ball Hex | 22mm | BH1222 | Some of angled screws of ARUM Ti-Base (screw head size is less than 2.1mm) *Please contact us for a separate list. | 20 Ncm |
| | 15mm | BH1215 | | |
| | 8mm | BH1208 | | |

Lab Driver



Screw Driver Tips

- Place the model scanbody and the abutment
- 10 types of tips (compatible with more than 300 implants system)



Analog Insertion Tips

- Place the lab analog to 3D printed model
- Easy and safe to place the lab analog
- Prevent damage of the lab analog internal thread
- 5 types of tips (compatible with more than 300 implants system)



Torque Adapter

- For clamping Attachment and Premill for connectorless milling
- Prevent screw loosening during milling



Digital Prosthetics Line-up

| No | ARUM® Product | Compatible Product Group | Screw | Analog | Ti-Base | | Model Scanbody | Intraoral Scanbody | Pre-milled Blank 10mm | | Pre-milled Blank 14mm | | Attachmant |
|----|------------------|---|-------|--------|---------|----|-------------------|-----------------------|--------------------------|----|--------------------------|----|------------|
| | | | | | H | NH | | | H | NH | H | NH | |
| 1 | ARUM | ARUM DENTISTRY NB I / NB II | ○ | ○ | ○ | ○ | ○ | ○ | ○ | ○ | ○ | ○ | ○ |
| 2 | AD-CLOS | ADIN® CLOSEFIT™ | ○ | ○ | ○ | ○ | ○ | | ○ | ○ | | | |
| 3 | AD-TOU | ADIN® TOUAREG™ S&OS | ○ | ○ | ○ | ○ | ○ | | ○ | | ○ | | ○ |
| 4 | AB-IH | ALPHABIOTEC® Internal Hex | ○ | ○ | ○ | ○ | ○ | | ○ | | ○ | | |
| 5 | AN | ANTHOGRY® | ○ | ○ | ○ | ○ | ○ | | ○ | | ○ | | ○ |
| 6 | AT-EV | ASTRA TECH™ OsseoSpeed™ EV | ○ | ○ | ○ | ○ | ○ | ○ | ○ | | ○ | | ○ |
| 7 | AT-EVPRO | ASTRA TECH™ OsseoSpeed™ Profile EV | | | | | ○ | | | | | | |
| 8 | AT-OSS | ASTRA TECH™ OsseoSpeed™ TX | ○ | ○ | ○ | ○ | ○ | | ○ | ○ | ○ | ○ | ○ |
| 9 | BEG | BEGO Semados® | ○ | ○ | ○ | ○ | ○ | | ○ | ○ | ○ | | ○ |
| 10 | BIC | BICON® Integra-CP™ | | ○ | | ○ | ○ | | | ○ | | ○ | |
| 11 | BD-BL | biodenta® Bone Level | ○ | ○ | | | ○ | | ○ | | | | ○ |
| 12 | BH-EXT | BIOHORIZONS® External * | ○ | ○ | ○ | ○ | ○ | | ○ | ○ | | | ○ |
| 13 | BH-INT | BIOHORIZONS® Internal* | ○ | ○ | ○ | ○ | ○ | ○ | ○ | ○ | ○ | | ○ |
| 14 | BM3I-INT | BIOMET 3i® Certain® | ○ | ○ | ○ | ○ | ○ | | ○ | | ○ | | ○ |
| 15 | BM3I-EXT | BIOMET 3i® EXTERNAL HEX CINNECTION | ○ | ○ | ○ | ○ | ○ | | ○ | ○ | ○ | | ○ |
| 16 | BT-BIK | BIOTECH DENTAL® KONTACT® / KONTACT S® | ○ | ○ | ○ | ○ | ○ | | ○ | ○ | | | |
| 17 | BB-MYT | BrainBase Corporation® MYTIS Arrow Implant | ○ | | | | ○ | | ○ | | | | |
| 18 | BRM-SK | BREDDENT Medical SKY® | ○ | ○ | ○ | ○ | ○ | | ○ | | | | ○ |
| 19 | BT-INT | BTI INTERNAL® | ○ | ○ | ○ | | ○ | | ○ | | | | ○ |
| 20 | CAM | CAMLOG® | ○ | ○ | ○ | ○ | ○ | | ○ | | ○ | | |
| 21 | CON | CAMLOG® CONELOG® | ○ | ○ | ○ | ○ | ○ | | ○ | | ○ | | ○ |
| 22 | CL-CON | CLC Conic | ○ | | | | ○ | | ○ | | | | |
| 23 | CRT | CORTEX® | ○ | ○ | ○ | | ○ | | ○ | | ○ | | |

Digital Prosthetics Line-up

| No | ARUM® Product | Compatible Product Group | Screw | Analog | Ti-Base | | Model Scanbody | Intraoral Scanbody | Pre-milled Blank 10mm | | Pre-milled Blank 14mm | | Attachmant |
|----|------------------|---------------------------------------|-------|--------|---------|----|-------------------|-----------------------|--------------------------|----|--------------------------|----|------------|
| | | | | | H | NH | | | H | NH | H | NH | |
| 24 | CWM-INT | COWELLMEDI® INNO Internal | ○ | ○ | ○ | ○ | ○ | | ○ | | | | ○ |
| 25 | CTE-EST | C-TECH® Esthetic Line | ○ | ○ | ○ | ○ | ○ | | ○ | | ○ | | |
| 26 | DP | DEEP® | ○ | ○ | ○ | ○ | ○ | | ○ | ○ | | | |
| 27 | DR-TIO | Dentaurum tioLogic® | ○ | | ○ | | ○ | | ○ | | | | |
| 28 | DTS-ICL | DENTIS® i-Clean | ○ | ○ | ○ | ○ | ○ | | ○ | | ○ | ○ | ○ |
| 29 | DTS-SCL | DENTIS® s-Clean | ○ | ○ | ○ | ○ | ○ | ○ | ○ | ○ | ○ | ○ | |
| 30 | DTS-SQ | DENTIS® SQ-SL | ○ | ○ | ○ | ○ | ○ | | ○ | | | | |
| 31 | DTM-NR | DENTIUM® NR Line | ○ | ○ | ○ | ○ | ○ | | ○ | | | | |
| 32 | DTM-SIM | DENTIUM® SimpleLine | ○ | ○ | ○ | ○ | ○ | | ○ | | | | ○ |
| 33 | DTM-SPL | DENTIUM® SuperLine | ○ | ○ | ○ | ○ | ○ | ○ | ○ | ○ | ○ | ○ | ○ |
| 34 | DS-XIV | DENTSPLY® Xive® | ○ | ○ | ○ | ○ | ○ | | ○ | | ○ | | ○ |
| 35 | DS-ANK | DENTSPLY® Ankylos® C/X Implant | ○ | ○ | ○ | ○ | ○ | | ○ | ○ | ○ | ○ | ○ |
| 36 | DO-SM | DIO® SM | ○ | ○ | ○ | ○ | ○ | | ○ | | ○ | | ○ |
| 37 | DO-UF | DIO® UF | ○ | ○ | ○ | ○ | ○ | | ○ | ○ | ○ | ○ | ○ |
| 38 | DO-UFT | DIO® UF(II) Internal Non Submerged | ○ | | | | ○ | | ○ | | | | ○ |
| 39 | DYN-PUS | DYNA® Pushin Octalock® | ○ | ○ | ○ | | ○ | | ○ | | | | |
| 40 | EB | EBI® | ○ | | | | ○ | | ○ | ○ | ○ | ○ | |
| 41 | GLD-TEK | Global D® Tekka® In-Kone | ○ | ○ | ○ | ○ | ○ | | ○ | | ○ | | |
| 42 | HMT-RA | HumanTech® RATIO | ○ | | | | ○ | | ○ | | | | |
| 43 | ID-LEG | IMPLANT DIRECT® Legacy™ | ○ | ○ | ○ | ○ | ○ | | ○ | | ○ | ○ | ○ |
| 44 | IL-GB | INTRA-LOCK® GOLD&BLUE™ | ○ | | | | ○ | | ○ | | | | ○ |
| 45 | KENT | KENTEC® | ○ | ○ | ○ | | ○ | | ○ | | | | |
| 46 | KS-PRI | KEYSTONE Prima Connex® | ○ | ○ | ○ | | ○ | | ○ | | ○ | | ○ |

| No | ARUM® Product | Compatible Product Group | Screw | Analog | Ti-Base | | Model Scanbody | Intraoral Scanbody | Pre-milled Blank 10mm | | Pre-milled Blank 14mm | | Attachmant |
|----|------------------|-------------------------------------|-------|--------|---------|----|-------------------|-----------------------|--------------------------|----|--------------------------|----|------------|
| | | | | | H | NH | | | H | NH | H | NH | |
| 47 | KYO-PO | KYOCERA Poix | ○ | ○ | ○ | ○ | ○ | | ○ | | ○ | | |
| 47 | KYO-FBL | KYOCERA FINESIA® Bone Level | ○ | | | | ○ | | ○ | | | | |
| 48 | KYO-FTL | KYOCERA FINESIA® Tissue Level | ○ | | | | ○ | | ○ | | | | |
| 49 | LSK-BIO | LASAK Bioniq® | ○ | ○ | ○ | ○ | ○ | | ○ | | ○ | | ○ |
| 50 | MM-IC | Medentis Medical® ICX | ○ | ○ | ○ | ○ | ○ | ○ | ○ | | ○ | | ○ |
| 51 | MEG | MEGAGEN® | ○ | ○ | ○ | ○ | ○ | | ○ | | ○ | | ○ |
| 52 | MEG-ONE | MEGAGEN® AnyONE | ○ | ○ | ○ | ○ | ○ | ○ | ○ | ○ | ○ | ○ | |
| 53 | MEG-RID | MEGAGEN® Anyridge® | ○ | ○ | ○ | ○ | ○ | ○ | ○ | ○ | ○ | | ○ |
| 54 | MEG-EEP | MEGAGEN® Anyridge® Extra EZ POST | ○ | | | | ○ | | ○ | ○ | | | |
| 55 | MEG-BD | MEGAGEN® BLUE DIAMOND | ○ | ○ | ○ | ○ | ○ | ○ | ○ | ○ | ○ | ○ | |
| 56 | MEG-EZP | MEGAGEN® EZ Plus | ○ | ○ | ○ | ○ | ○ | | ○ | ○ | ○ | ○ | ○ |
| 57 | MEG-RES | MEGAGEN® Rescue | ○ | ○ | ○ | ○ | ○ | | ○ | ○ | ○ | ○ | ○ |
| 58 | MS-C | MIS® C1 | ○ | ○ | ○ | ○ | ○ | | ○ | | | | ○ |
| 59 | MS-INT | MIS® Internal Hexagon | ○ | ○ | ○ | | ○ | | ○ | | ○ | | ○ |
| 60 | NEB | NEOBIOTECH® | ○ | ○ | ○ | ○ | ○ | ○ | ○ | ○ | ○ | ○ | |
| 61 | NED | NEODENT® CM Implant Line | ○ | ○ | ○ | | ○ | | ○ | | | | ○ |
| 62 | NED-GM | NEODENT® GM | ○ | ○ | ○ | ○ | ○ | ○ | ○ | | | | ○ |
| 63 | NOS-PA | NEOSS Pro Active® | ○ | ○ | ○ | ○ | ○ | | ○ | | ○ | | ○ |
| 64 | NB-ACT | NOBEL BIO CARE® Active™ | ○ | ○ | ○ | ○ | ○ | ○ | ○ | | ○ | | ○ |
| 65 | NB-BRA | NOBEL BIO CARE® Branemark® | ○ | ○ | ○ | ○ | ○ | | ○ | | ○ | | ○ |
| 66 | NB-REP | NOBEL BIO CARE® Replace Select™ | ○ | ○ | ○ | ○ | ○ | | ○ | | ○ | | ○ |
| 67 | NCOS | NucleOSS | ○ | | ○ | | ○ | | ○ | | | | |
| 68 | OST-GS | OSSTEM® GS(TS) | ○ | ○ | ○ | ○ | ○ | ○ | ○ | ○ | ○ | ○ | ○ |

Digital Prosthetics Line-up

| No | ARUM® Product | Compatible Product Group | Screw | Analog | Ti-Base | | Model Scanbody | Intraoral Scanbody | Pre-milled Blank 10mm | | Pre-milled Blank 14mm | | Attachmant |
|----|------------------|--|-------|--------|---------|----|-------------------|-----------------------|--------------------------|----|--------------------------|----|------------|
| | | | | | H | NH | | | H | NH | H | NH | |
| 69 | OST-KS | OSSTEM® KS | ○ | ○ | ○ | ○ | ○ | ○ | ○ | ○ | ○ | ○ | |
| 70 | OST-SS | OSSTEM® SS | ○ | ○ | ○ | ○ | ○ | | ○ | ○ | ○ | | ○ |
| 71 | OST-US | OSSTEM® US | ○ | ○ | ○ | ○ | ○ | | ○ | | ○ | | ○ |
| 72 | PLT-IV | PLATON® Type IV Pro | ○ | | | | ○ | | ○ | | | | |
| 73 | SHN | SHINHUNG® | ○ | ○ | | | ○ | | ○ | | | | ○ |
| 74 | SC-INV | SIC Invent® | ○ | ○ | ○ | | ○ | | ○ | | ○ | | ○ |
| 75 | SI-MSC | SOUTHERN IMPLANTS MSc EXTERNAL HEX | ○ | ○ | ○ | ○ | ○ | | ○ | ○ | | | |
| 76 | SI-INT | SOUTHERN IMPLANTS M-Series (Internal Hex) | ○ | ○ | | | ○ | | | | | | |
| 77 | STR-BLX | STRAUMANN® BLX | ○ | ○ | | | ○ | ○ | ○ | ○ | ○ | ○ | |
| 78 | STR-BL | STRAUMANN® Bone Level® | ○ | ○ | ○ | ○ | ○ | ○ | ○ | ○ | ○ | | ○ |
| 79 | STR-CBL | STRAUMANN® Conical Bone Level® | ○ | ○ | ○ | ○ | ○ | | ○ | ○ | | | |
| 80 | STR-TL | STRAUMANN® synOcta® | ○ | ○ | ○ | ○ | ○ | | ○ | ○ | ○ | ○ | |
| 81 | STR-TLX | STRAUMANN® TLX | ○ | ○ | | | ○ | ○ | ○ | ○ | ○ | ○ | |
| 82 | SM | Sweden&Martina | ○ | ○ | ○ | | ○ | | ○ | | | | ○ |
| 83 | THO-SPI | THOMMEN SPI® | ○ | ○ | ○ | | ○ | | ○ | | ○ | | ○ |
| 84 | WAR-ONE | WARANTEC® Oneplant | ○ | ○ | ○ | ○ | ○ | | ○ | | ○ | | |
| 85 | ZMR | ZIMMER BIOMET® | ○ | ○ | ○ | ○ | ○ | | ○ | | ○ | ○ | ○ |
| 86 | ZMR-SPA | ZIMMER BIOMET® Spline A | ○ | ○ | | | ○ | | ○ | | | | |
| 87 | ZMR-SPB | ZIMMER BIOMET® Spline B | ○ | ○ | | ○ | ○ | | ○ | | ○ | | |
| 88 | ZMR-TSV | ZIMMER BIOMET® Tapered Screw-Vent® | ○ | ○ | ○ | ○ | ○ | | ○ | ○ | ○ | ○ | ○ |

* Products are subject to change without notice to improve quality, function, design, or otherwise.



ARUM DENTISTRY Co., Ltd.

23, Gukjegwahak 11-ro, Yuseong-gu, Daejeon, 34002, Republic of Korea
Tel +82 42 935 3644 | Fax +82 42 935 3645 | www.arumdentistry.com
Contact info@arumdentistry.com

