

JUST

DENTAL MILLING MACHINE





*** Attached Image is for product understanding.

5-AXIS Dry type Milling machine

Dimension (W * D * H)
Machine : 570mm*620mm*675mm
Table : 570mm*620mm*970mm

Weight
Machine : 95kg
Table : 40kg

Range of Materials
Zirconia, Wax
PMMA, Hybrid Ceramic

Machining Condition
Dry

Number of Axis
5 Axis Simultaneous Processing

Drive Mechanism
Ball Screw / Linear Guide

Motor
Stepping Servo Motor

Angle of Rotation
A axis : $\pm 30^\circ$
B axis : $\pm 360^\circ$

Tool
Shank : $\varnothing 4$
Positions : 10ea

Spindle
Motor Type : High Frequency
Power : AC 750W
Speed : Max. 100,000rpm

Compressed air connection
Min. 6bar

Voltage/Frequency
200V-230V / 50Hz-60Hz



Zirconia



Wax



PMMA



Hybrid
Ceramic

JUST 5X-J

DENTAL MILLING MACHINE



ACCESSORIES

- O-type JIG

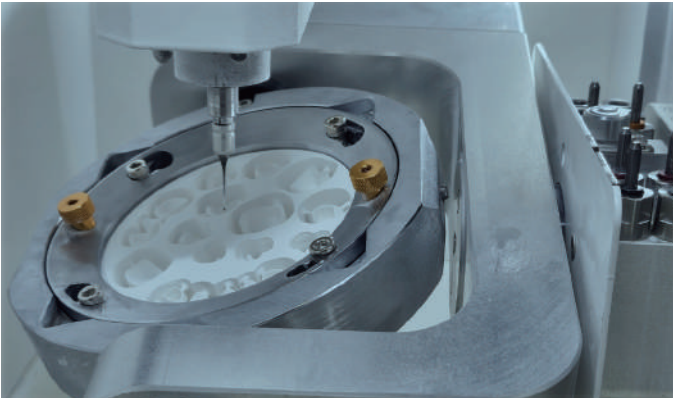


- C-type JIG



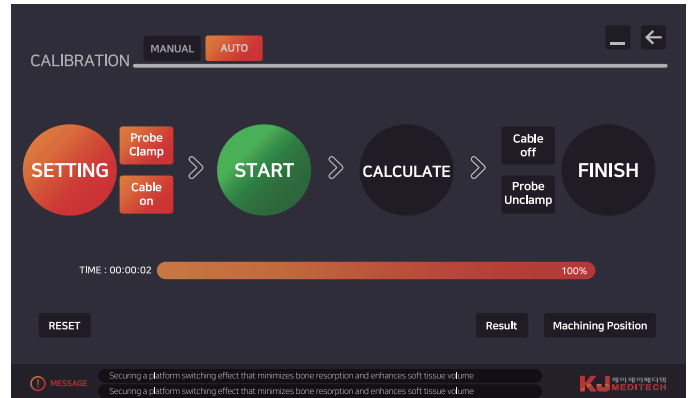
PROCESSING

- 5-AXIS Simultaneous Processing



< O-type >

- Auto Calibration



< C-type >





*** Attached Image is for product understanding.

5-AXIS

Wet type
Milling machine

Dimension (W * D * H)	Machine : 570mm*620mm*675mm Table : 570mm*620mm*970mm
Weight	Machine : 95kg Table : 60kg
Range of Materials	Pre-milled Abutment, Wax, PMMA Hybrid Ceramic, Lithium Disilicate
Machining Condition	Wet
Number of Axis	A-Type : 5 Axis Simultaneous Processing B-Type : 4 Axis Processing
Drive Mechanism	Ball Screw / Linear Guide
Motor	Stepping Servo Motor
Angle of Rotation	A-Type : A axis : $\pm 30^\circ$, B axis : $\pm 360^\circ$ B-Type : A axis : $\pm 360^\circ$
Tool	Shank : $\varnothing 6$ Positions : 10ea
Spindle	Motor Type : High Frequency Power : AC 1,280W Speed : Max. 60,000rpm
Compressed air connection	Min. 6bar
Voltage/Frequency	200V-230V / 50Hz-60Hz



Pre-milled
Abutment

Hybrid
Ceramic

Lithium
Disilicate

PMMA

Wax

JUST 5X-M

DENTAL MILLING MACHINE



ACCESSORIES

- JIG Holder (A-type)



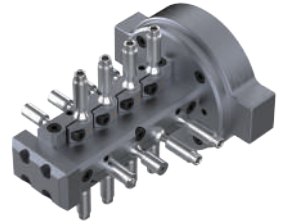
- Reversed JIG
>> Used Reverse Attachment



- 90° Vertical JIG
>> Used Reverse Attachment



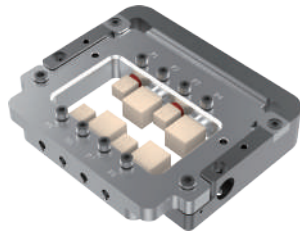
- JIG Holder (B-type)



- Disc JIG



- Block JIG



- Reverse Attachment



PROCESSING

- 90° Vertical Processing



< A-type >

- 5-AXIS Simultaneous Processing



- Auto Calibration



< B-type >

DENTAL IMPLANT

JUST
IMPLANT SYSTEM

• Internal Hex

• Open Thread

• Tapered Thread

• Bladed Cutting Edge

• Surface Treatment



- A variety of diameters and lengths are available for various oral environments.
- Securing a platform switching effect that minimizes bone resorption and enhances soft tissue volume.

SURGICAL INSTRUMENT



< Internal **BASIC KIT** >



< Internal **FULL KIT** >

OTHER PRODUCTS

ORTHODONTIC SCREW



Type 2



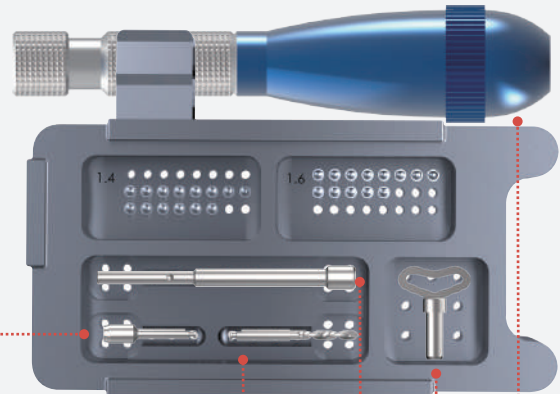
Type 3



Type 4



Type 5



H.P. Driver

Mini Handle

Drill

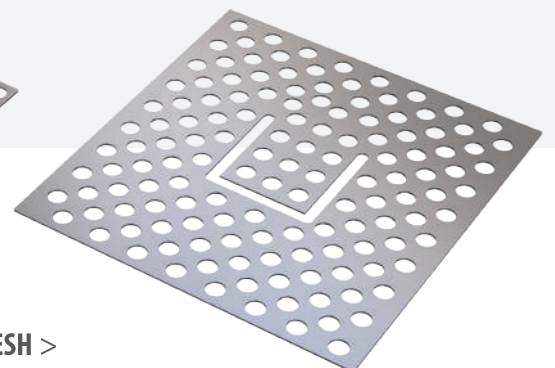
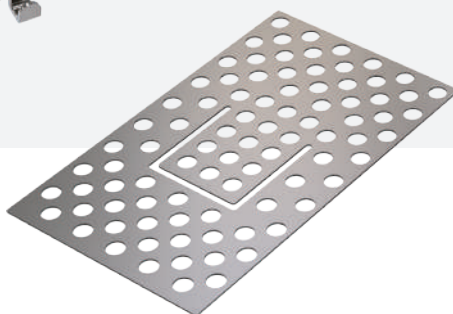
Shaft

Universal Driver

ARCH BAR & Ti-MESH



< ARCH BAR >

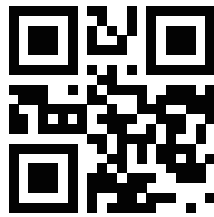


< Ti-MESH >

About KJ MEDITECH

KJ Meditech Co., Ltd. was established in 1980 and has plants in Gwangju High-tech Scientific Industrial Complex and Jingok Industrial Complex. It is a company that specializes in manufacturing the highest quality dental medical devices including implants and surgical instruments, orthodontic screws, and dental multi-axis milling machines.

We have a number of intellectual property rights and medical device licenses, and have successfully entered the domestic and overseas markets through various domestic and international certifications such as KGMP, CE, FDA and NMPA.



- **ADDRESS** : 21, Cheomdanventure-ro 40beon-gil, Buk-gu, Gwangju, SOUTH KOREA
- **PHONE** : +82-62-972-5476
- **FAX** : +82-62-973-2809
- **Mail** : sales@kjmedi.com
- **WEB** : www.kjmedi.com