



Product Guide

Nt Clear Varnish



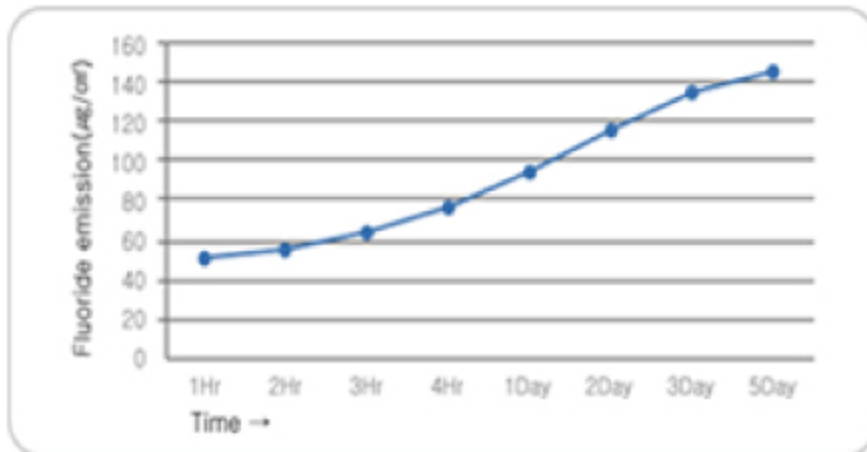
5% Sodium Fluoride Varnish (22,600 ppm)

- + With Calcium phosphate(TCP)
- + With Tocopherol(Vitamin-E)
- + With Xylitol

Why Nt Clear Varnish.

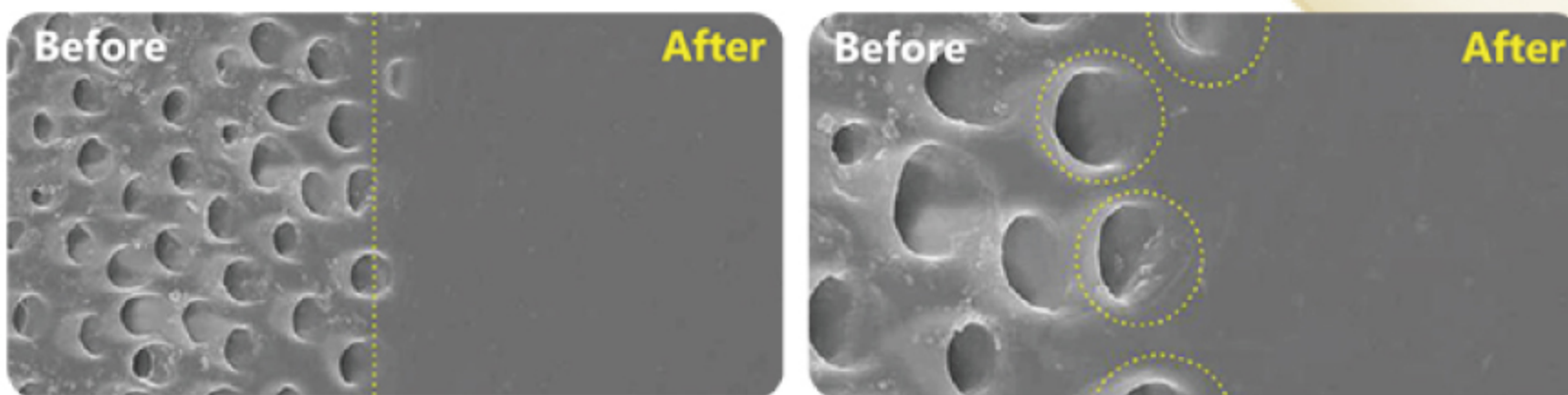
01 Excellent tooth contact and adhesion. (Long lasting fluoride release (up to 5 days).)

It is generally recommended to have the effect for 4~6 hours after fluoride application. It shows that it releases the sufficient amount of the fluoride ion continuously after applying Nt Clear Varnish. Even after 4 hours, the cumulative release is $140\mu\text{g}/\text{cm}^2$ for 5 days.



02 Relieve hypersensitivity by occluding dentinal tube

By applying Nt Clear Vanish, the dentinal tubes are completely occluded from the boundary.



03 improve dental health with technical formulation.

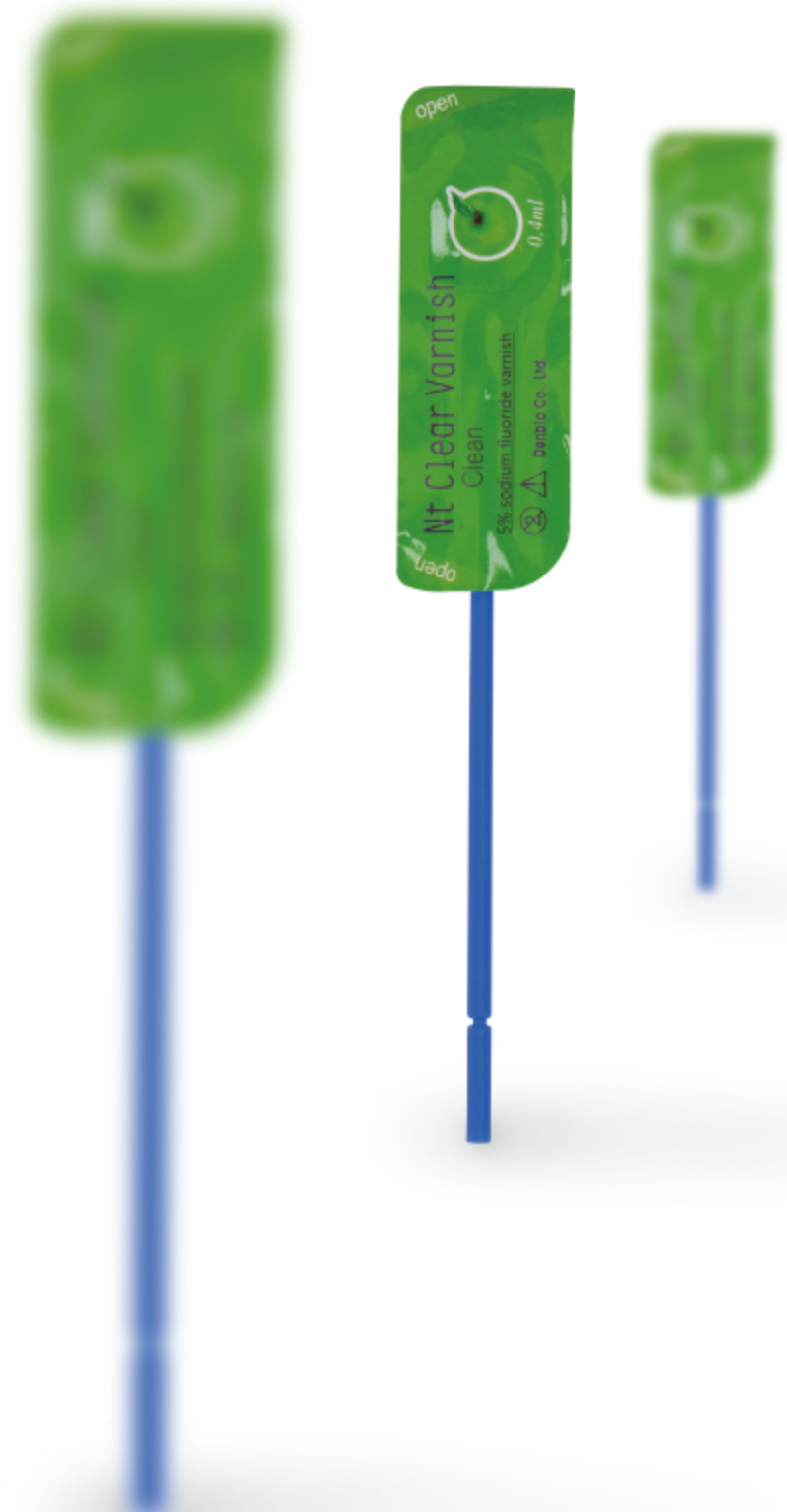
- + TCP
- + Tocopherol
- + Xylitol

04 Optimized property for application.

Easy and even coating with thin layer
No residue left after application

05 Applied for various symptoms.

- + For sensitive tooth
- + For surrounding of the band and bracket for the brace
- + After whitening and scaling



How to use

- **1** Clean the teeth and remove moisture from the part to be treated.
- **2** Peel off the cover of the product.
- **3** Mix the varnish with a brush enclosed in the case.
- **4** Thinly apply the varnish on the tooth to be treated.
- **5** After application, allow to dry for about 5 seconds and then instruct the patient to keep their mouth closed.

Precautions

- **1** Patients should be careful not to drink the coating agent during application.
- **2** Avoid receiving other types of fluoride treatment on the same day.
- **3** Stop using fluoride tablets and rinses for a few days after the initial treatment.
- **4** Patient could eat soft food and cold drinks after 2 hours from treatment.
- **5** Avoid brushing your teeth for at least 4 to 6 hours after treatment.
- **6** The operator must wear dental gloves.
- **7** Single use only.
- **8** For professional use only.

Contraindications

- **1** Do not use for ulcerative gingivitis and stomatitis patients
- **2** Do not use for the patients allergic to fluoride and rosin.



Nt Clear Varnish

FAQ

Nt Clear Varnish

1) What age varnish can be used and how often?

Recommended after 2 years old
Can be applied 3~4 times a year
Not for pregnant woman

2) Why is it a bit yellowish?

It comes from rosin color and will be similar to the teeth color after about an hour.

3) Bitter taste of varnish?

Improved by adding xylitol and apple flavor
Adding new flavors : strawberry, peach

4) Is it dangerous to apply fluoride varnish?

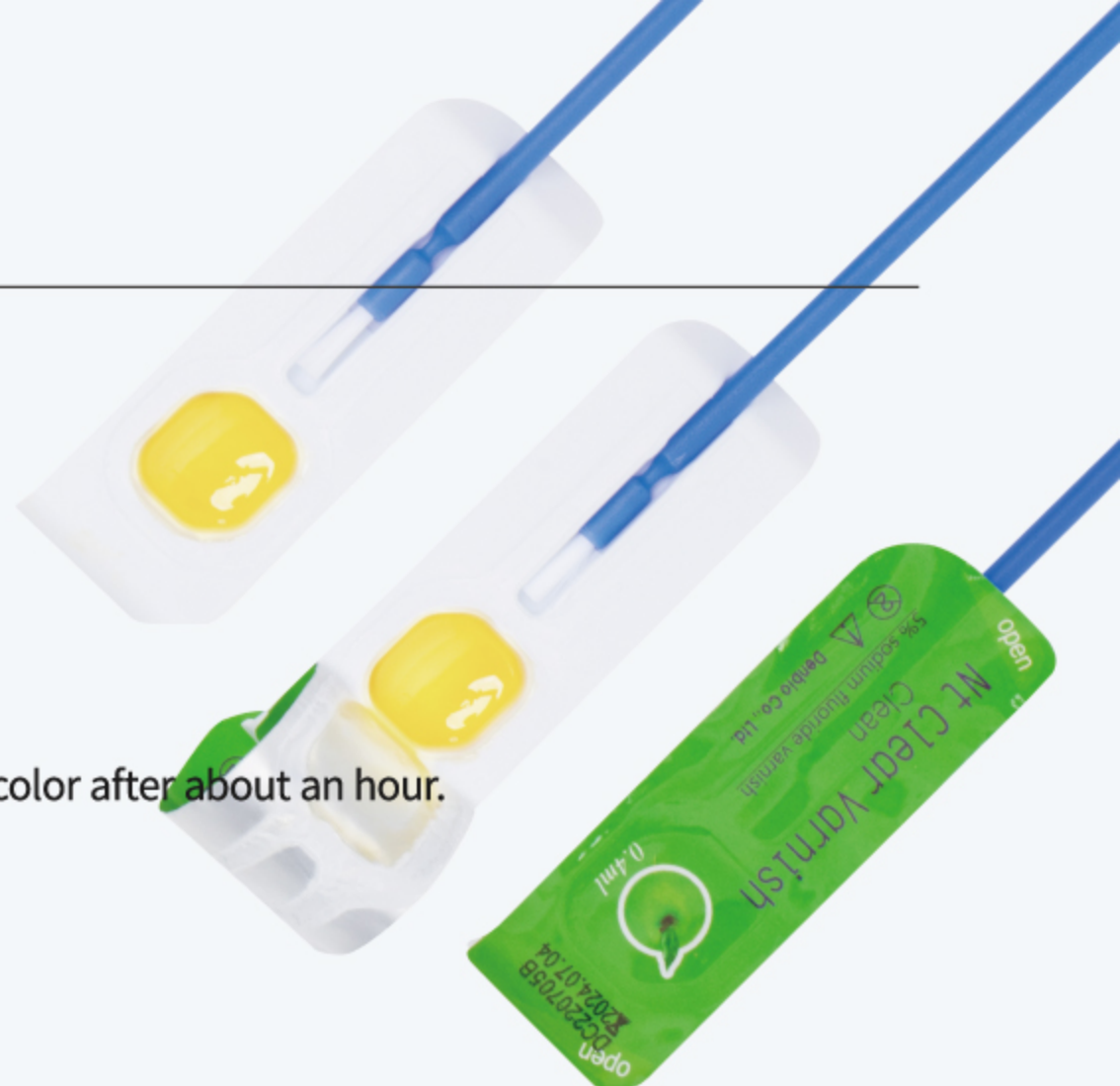
It slowly releases the fluoride for a long time and not absorbed to the body all at once.
(Lethal dose : 5~10g / 0.4ml varnish contains only 6~9mg of fluoride)

5) What is the big difference from other varnishes?

+ It releases fluoride for a long time and very effective for the tooth care since it has optimized/technical formulation. Thus, patient would not have discomfort after application. (No residue left on the teeth and gum) Some fluoride varnish may have little particles left and clumped around the teeth and gums when their varnishes are in contact with saliva.

6) What is the package of the product?

32pcs / 200pcs



Comparison after application.



[A company's product after application _ discomfort on teeth and gums due to crumpled product/ rough surface]



[Nt Clear Varnish _ soft and even layer coating]

+ Easy to use and hygienic package

Easy to apply with the brush enclosed.

Just use the capsule to mix the product. (No mixing pad needed)

Complete sealing film on the product. (No risk of contamination and deterioration)