

A Trustworthy Technology Connecting Treatment and Patients

"A picture is worth a thousand words."

Now, show your patients the answers to their questions directly!



What is LINKDENS?

LINKDENS is a cutting-edge device that utilizes blue visible light and a specialized optical filter to provide a clearer visualization of biofilm on teeth. Using an innovative method, Dentists can easily identify it.

This technology helps dental professionals confirm the presence of biofilm and plaque in a non-invasive manner while also supporting the monitoring of oral conditions in daily life. LINKDENS utilizes BIS(Biofluorescence Imaging System) technology to enhance visualization, promoting a better understanding and management of oral hygiene without requiring diagnostic claims.

Research Activities and Collaborative Studies

Since the initial exploration of this technology in 1993, LINKDENS has been the subject of ongoing research and development.

More than 40 academic publications, both domestic and international, have highlighted the innovative principles behind this technology. Collaborative efforts with research institutions continue to focus on expanding its practical applications and enhancing its role in supporting oral hygiene assessments.

Extensive Intellectual Property LINKDENS is protected by a range of patents and trademarks that reflect its commitment to technological innovation. These include intellectual property related to:

“Visualization Device for Observing Microbial Activity and Supporting Self-Monitoring”,
“Portable Visualization Tool for Observing Microbial Activity and Supporting Self-Monitoring”
These patents underscore LINKDENS’s focus on advancing tools that aid in oral hygiene observation and monitoring, reinforcing its role in promoting proactive care.

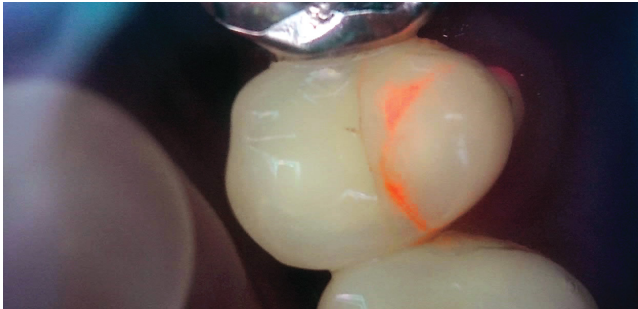
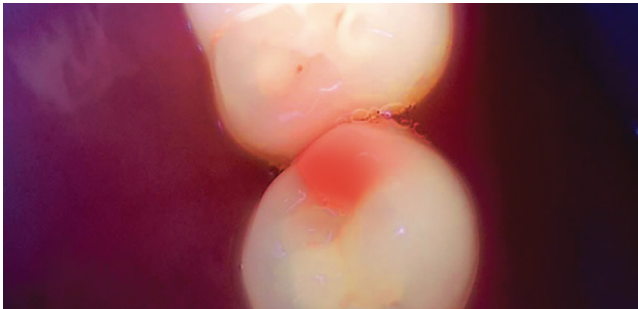
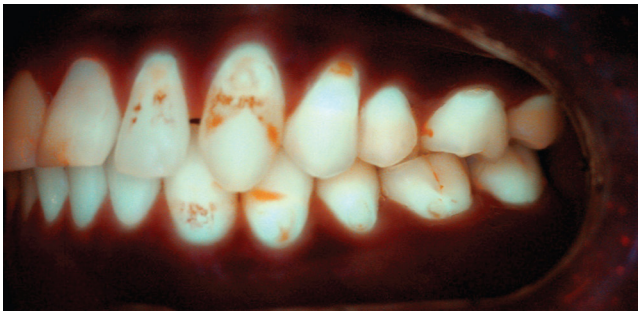
LINKDENS: Unveiling the Red-Hot Clues Beneath the Surface

LINKDENS detects and visualizes biofilm on teeth using blue visible light and a specialized filter.

Normal Image



LINKDENS Image



LINKDENS: The Full-Spectrum Approach for Next-Level Dentistry

Step 1

LINKDENS QC

LINKDENS QC

LINKDENS QC supports improved visual clarity for dental professionals during oral care reviews, providing a comprehensive view of the oral cavity, including the upper and lower arches.



Step 2

LINKDENS QP

LINKDENS QP

LINKDENS QP delivers clear and detailed imaging of individual teeth, Supporting enhanced visual observation for dental professionals during oral hygiene assessments.



Step 3

LINKDENS SW

LINKDENS

LINKDENS Enhances visualization of teeth surfaces and Highlights areas where biofilm may be present, providing supportive insights for oral hygiene monitoring and management.



The screenshot displays the LINKDENS SW software interface, which is used for patient management and oral hygiene monitoring. The interface is divided into several sections:

- Top Bar:** Shows the user's name, "Linkdens Clinic | Dentist", and a notification bell icon.
- Navigation:** Includes a "Patient list" button and a "Gallery" button.
- Patient Information:** Displays "Patient 01" with ID "24051004" and date of birth "1950-11-01(73y)".
- History of medical treatment:** Lists treatments such as "2023-05-12 OP" and "2023-05-12 root planning".
- Gallery:** Shows a grid of oral images, including "Cam pro" (camera) and "Pen C" (penicillin) images.
- MCA map for Oral Hygiene Screening:** A detailed view of a patient's teeth with a color-coded map (Green, Yellow, Red) indicating areas of biofilm presence. The map includes a legend with values: 15.2, 49.7, 6.3, and 58%. The map also shows "Dark Light" and "Green-Red" axes.

Step 4

LINKDENS VU

LINKDENS VU

LINKDENS VU provides real-time visualization of the oral cavity, Supporting enhanced visual observation for dental professionals during oral hygiene assessments.

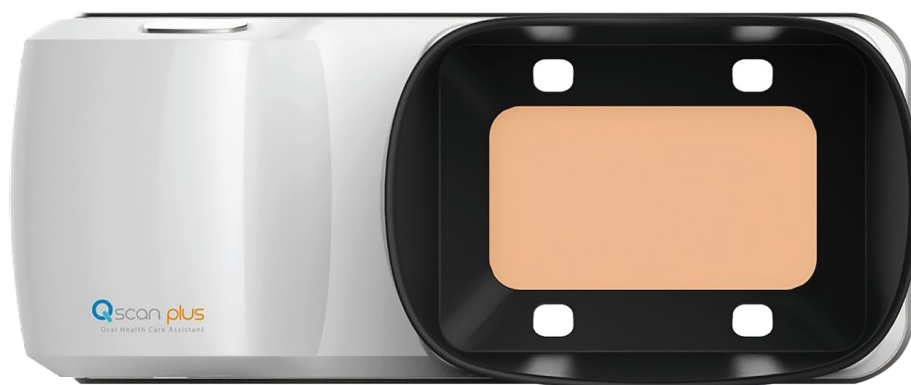


Step 5



QSCAN PLUS

QSCAN PLUS is a portable device designed for home healthcare and personal oral hygiene monitoring, allowing users to view and manage oral conditions for self-care and general monitoring purposes.





#302, 3F, 38, Teheran-ro 4-gil, Gangnam-gu, Seoul, Republic of Korea

www.aiobio.co.kr

aiobio@aiobio.co.kr

+82-2-561-5101

[🌐 linkedin.com/company/aiobio](https://www.linkedin.com/company/aiobio)

[📷 instagram.com/aiobio_gray](https://www.instagram.com/aiobio_gray)