



InSync ZR by ZTM Axel Gültges



Hybrid-Technik by ZTM Pascal Holtbaus

Hybrid  
technique



## InSync ZR kits and moduls

We have configured four InSync ZR kits and five InSync ZR modules for you. However, you can purchase all InSync ZR masses individually and thus assemble your individual InSync ZR Kit. Please contact us, we will be happy to advise you.



InSync ZR pro Kit



InSync ZR smart Kit



InSync ZR Titan Kit



InSync ZR hybrid Kit



InSync ZR Liner Modul



InSync ZR Core Dentin Modul



InSync ZR Modifier Modul



InSync ZR Neck Transpa Modul



InSync ZR Gingiva Modul

## Service & Support

General requests [info@jensendental.de](mailto:info@jensendental.de)  
+49 7123 92260  
Techn. Support: [support@jensendental.de](mailto:support@jensendental.de)



Website: [www.jensendental.de](http://www.jensendental.de)  
Webshop: <https://shop.jensendental.de/en>



Jensen GmbH | Gustav-Werner-Straße 1 | 72555 Metzingen | Germany | [info@jensendental.de](mailto:info@jensendental.de) | [www.jensendental.de](http://www.jensendental.de)



**InSync® ZR**  
Veneering ceramic  
ZrO<sub>2</sub> Li-Di Ti

## PRODUCT INFORMATION

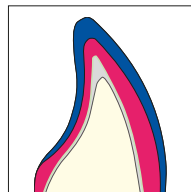




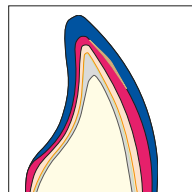
## versatile

- Thanks to its wide CTE range and its low firing temperature, InSync ZR can be used in a wide range of applications for the veneering of zirconia, lithium disilicate, titanium and titanium alloy frameworks.
- With the consistent colour concept of InSync ZR anything is possible, from efficient BASIC layering with two masses to aesthetically demanding, individual ADVANCED layering. (1) (2)
- In combination with MiYO, the InSync ZR layering ceramic is perfect for restorations in smart hybrid technique. (3)
- The comprehensive colour palette - in accordance with the VITA® Classic Colour System\* - offers almost unlimited creative possibilities.
- The ceramic system is rounded off by the high-gloss glaze paste that fires at low temperatures.

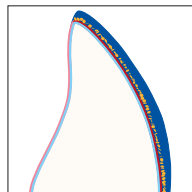
\* VITA® Classic is a registered trademark of VITA Zahnfabrik H. Rauter GmbH & Co. KG



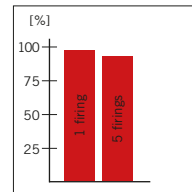
1: Efficient BASIC layering with 2 masses



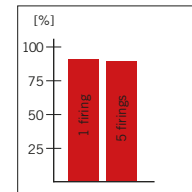
2: Individual ADVANCED layering



3: Smart hybrid technique in combination with MiYO



6: Colour stability



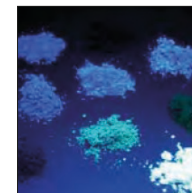
7: Opacity stability

## aesthetic

- For the InSync ZR Ceramic System, the base materials were developed completely from scratch. The fluorescence, translucency and opacity of the ceramic are based on the human tooth. These advantageous optical characteristics lend a high-quality, discerning aesthetic and naturally lifelike effect to all dental restorations.
- Special ingredients create a ceramic material with a subtle auto-fluorescence and unusual brilliance. (4) (5)
- The high colour stability and brilliance are retained even after repeated firing. (6) (7)



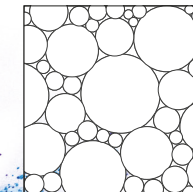
4: Colour pigments in daylight conditions



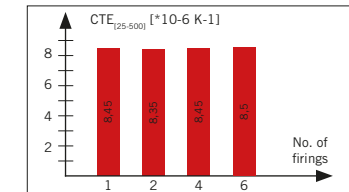
5: Fluorescent colour pigments (UV light)

## reliable

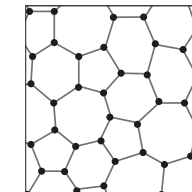
- The high-fusing, fluorescent and translucent Liner and the Titanium Opaquer ensure a secure bond between framework and layering ceramic. (8) (9)
- InSync ZR's unique particle size distribution ensures excellent sculptability, paired with low shrinkage. (10)
- The ceramic is leucite-free and has an amorphous crystal structure, which makes it particularly CTE stable. This means problem-free processing, even after repeated firing. (11)
- The combination of Liner or Titanium Opaquer, low firing temperature, CTE stability and adequate hardness minimise the risk of chipping.
- Due to the amorphous crystal structure, restorations with InSync ZR are exceptionally stable and resistant to chipping (12) (13)
- The hardness of the InSync ZR layering ceramic corresponds to that of a natural tooth. This minimises dysfunctions of the stomatognathic system.
- High biocompatibility (14)



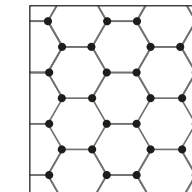
10: Particle size distribution



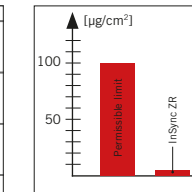
11: CTE stability



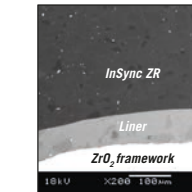
12: Amorphous crystal structure of InSync ZR



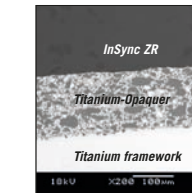
13: Crystalline structure of leucite ceramic



14: Chemical solubility according to ISO 6872



8: REM I Liner for a reliable, tight adhesive bond



9: REM I Titanium-Opaquer for a reliable, tight adhesive bond