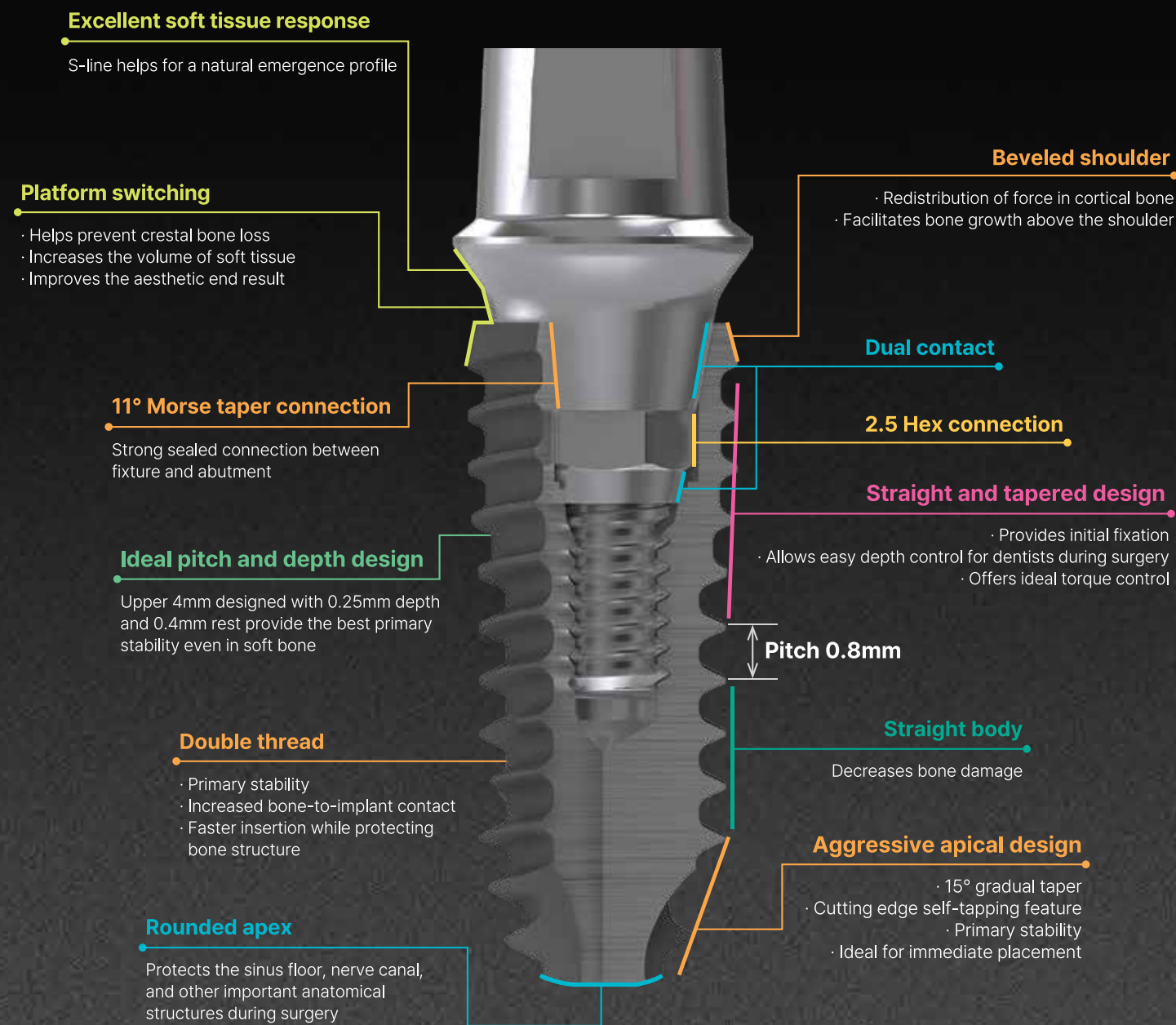


ONEDAYBIOTECH'S

Clinically Proven, More Advanced More Successful IMPLANT



Quality & Certifications

Optimized design for a wide range of clinical cases

Design and development reflecting the know-how of clinical experts enables the selection of the design suitable for the patient's various clinical cases and enables the technician to perform the correct procedure and heal quickly.

Excellent durability and quality without worrying about breakage

It can be used semi-permanently with the finest titanium material and strict quality control of the American company Carpenter.

Applying differentiated SLA surface treatment

Rapid osteointegration and biocompatibility with human bones are showed in SLA special treatments on implant surfaces.

11° Morse Taper Connection

Excellent design capability and precise processing technology provide superior level of tightening precision to show stable durability.



Easy & Fast Smart Implant System

ONEDAYBIOTECH Implants,
Incorporating Expertise Gained from Extensive
Implant Surgery Experience



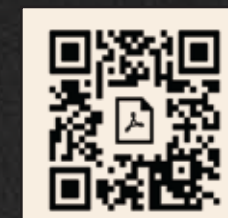
HEAD OFFICE

135, Seongseodong-ro, Dalseo-gu, Daegu, Republic Of Korea
TEL. +82 (53) 581.2835

SEOUL BRANCH

15th floor, Starplex, 438 Gangnam-daero, Gangnam-gu, Seoul
TEL. +82 (70) 7575.0820

www.onedaybiotech.com



CATALOG DOWNLOAD



VISIT OUR WEBSITE

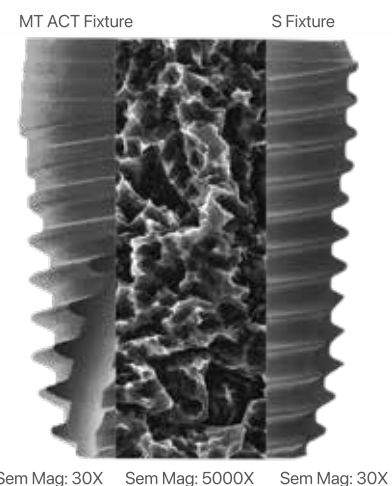
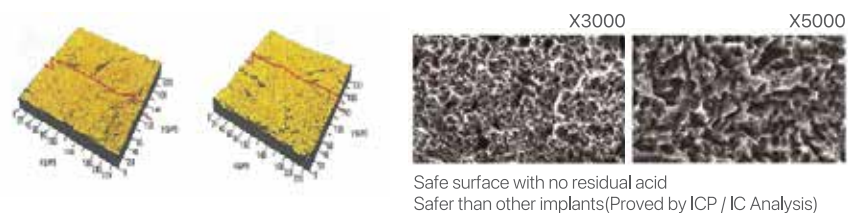
FIXTURE

Built for Perfection

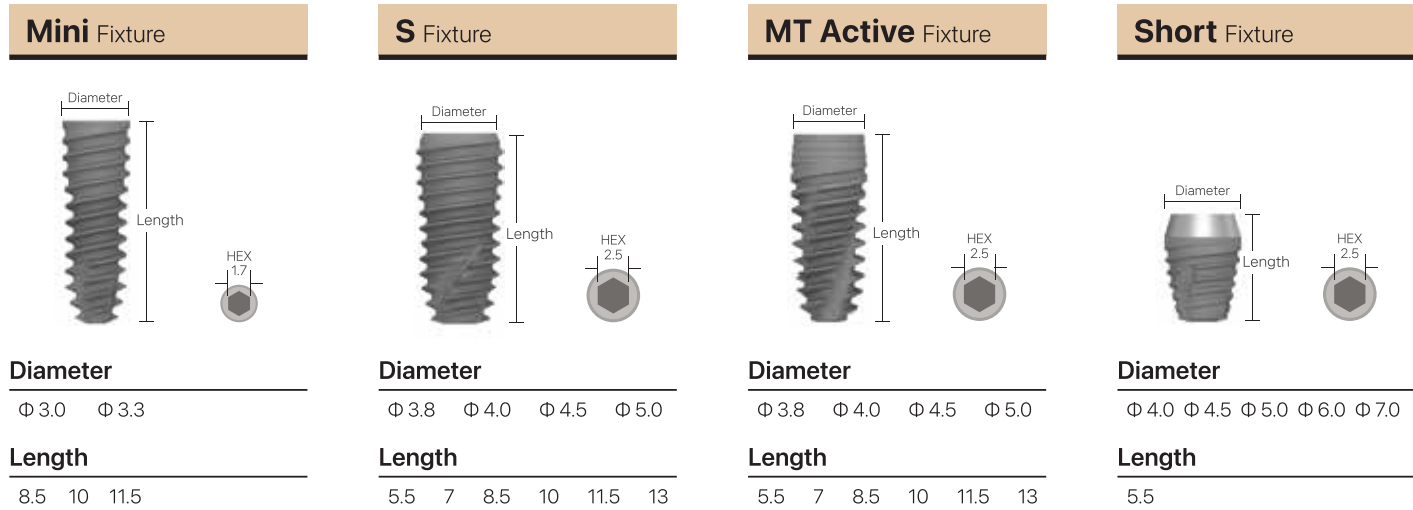
S.L.A Surface

S.L.A Surface Is Excellent In Morphology And Its Roughness [Ra-1.8um -2.5um] Gives A Great Integration. It Has 50% More Rough Surface Area And Has A Higher Retention Strength Than RBM. It Improves The Attachment And Growth Of Bone Cells Which Enhances The Rate Of Osseointegration.

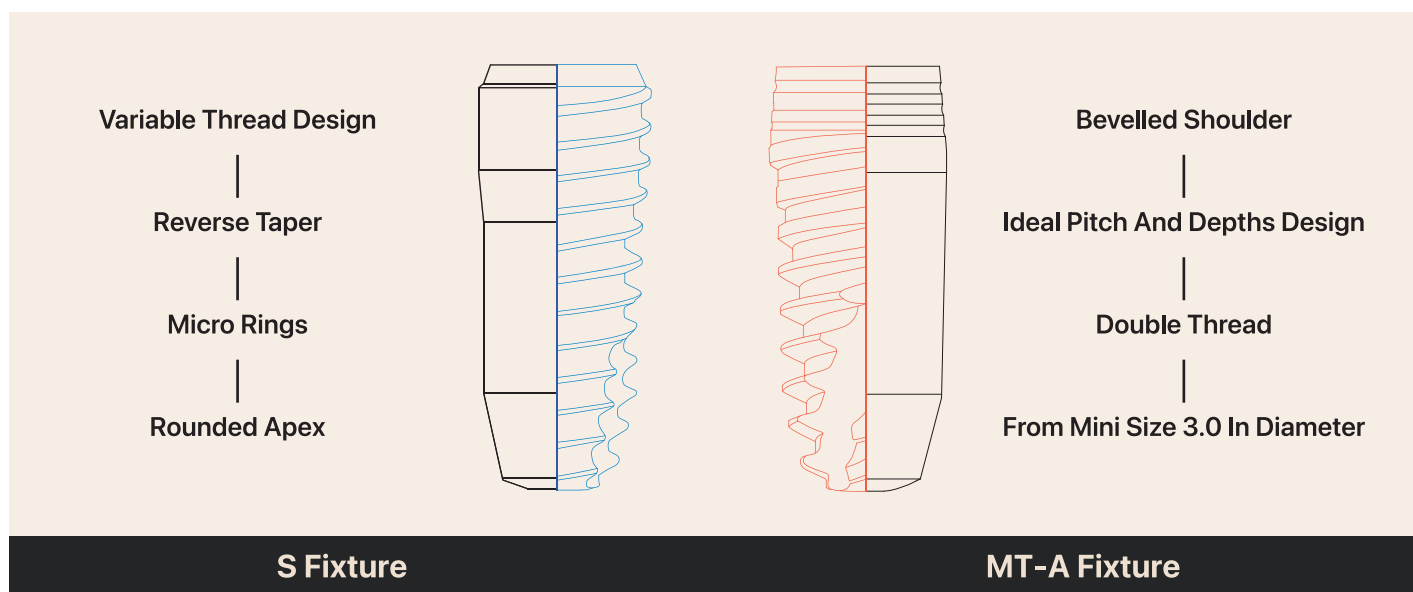
Limited insertion torque: 40Ncm



Implant System

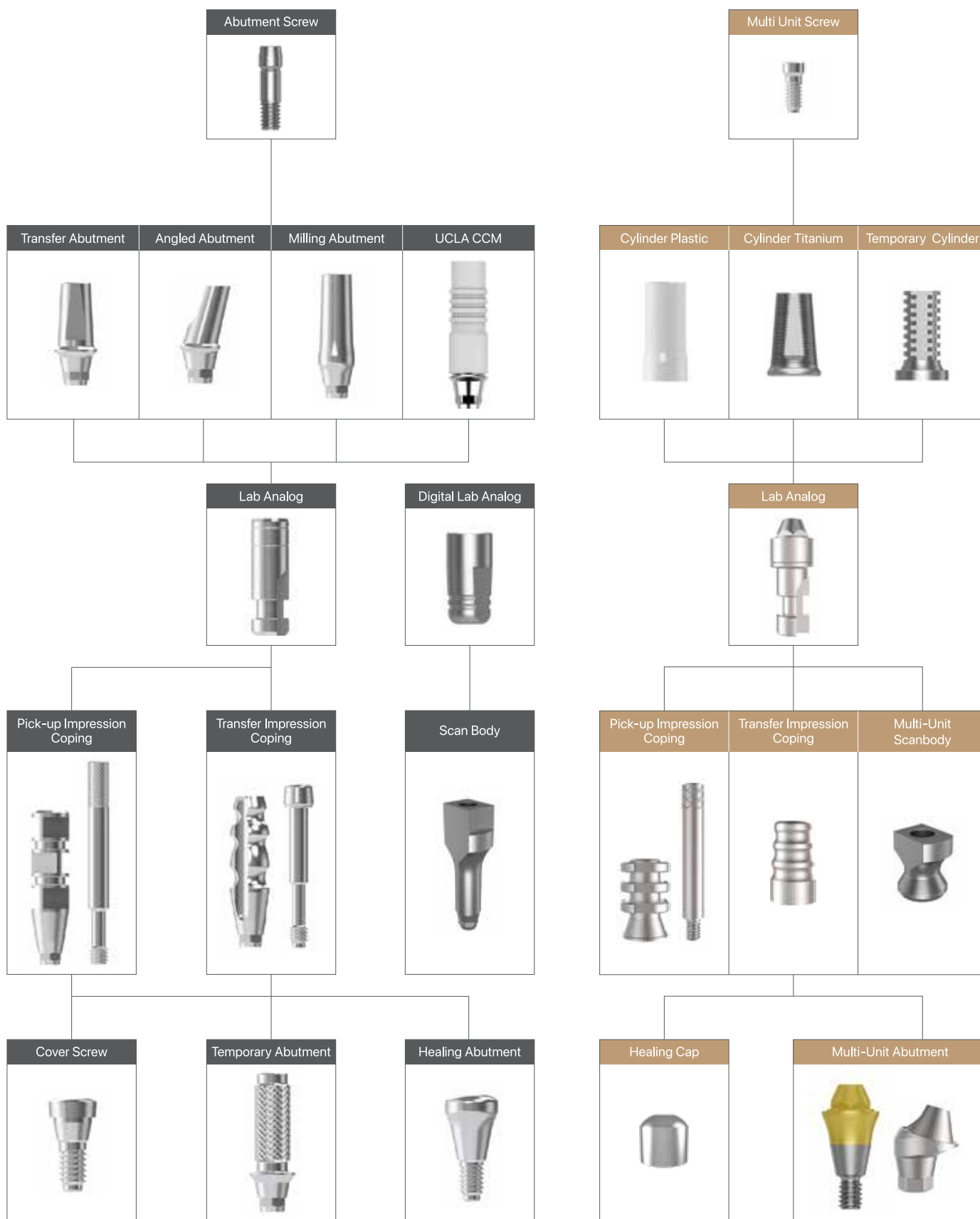


The differences between S & MT-A Fixture



IMPLANT FLOW

Every Step Dedicated to Your Smile



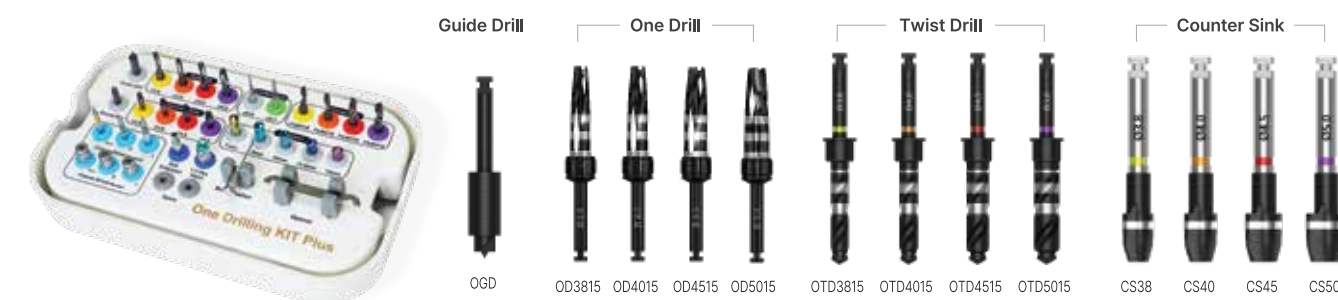
Just Drill Once

Then Place The Implant Right Away

- ✓ You Can Collect Autogenous Bone
- ✓ Painless Surgery Pain Only 6 Hours
- ✓ Save Surgery Time Dramatically
- ✓ Path Is Very Straight



One Drill Kit Components



One Drill Kit Drilling Sequence

Fix.D	Bone Density	One Drill				Counter Sink			
		Guide Drill	$\Phi 3.8$	$\Phi 4.0$	$\Phi 4.5$	$\Phi 5.0$	$\Phi 3.8$	$\Phi 4.0$	$\Phi 4.5$
$\Phi 3.8$	Hard	●	●	●		●			
$\Phi 3.8$	Normal	●	●						
$\Phi 3.8$	Soft	●	●						
$\Phi 4.0$	Hard	●		●			●		
$\Phi 4.0$	Normal	●		●					
$\Phi 4.0$	Soft	●	●						
$\Phi 4.5$	Hard	●			●			●	
$\Phi 4.5$	Normal	●			●				
$\Phi 4.5$	Soft	●	●						
$\Phi 5.0$	Hard	●				●			●
$\Phi 5.0$	Normal	●				●			
$\Phi 5.0$	Soft	●		●					

* Initial Stability could be controlled by the drilling depth of Counter Sink

Autogenous Bone Harvest Amount By Diameter

Drill Diameter	$\Phi 3.8$	$\Phi 4.0$	$\Phi 4.5$	$\Phi 5.0$
Bone Collecting	0.06cc	0.07cc	0.10cc	0.13cc