

ethoss[®] Grow
Stronger_™

GROW STRONGER[®]

INSPIRED BY NATURE, OPTIMISED BY SCIENCE



WHY ETHOSS?



SIMPLER

Its built-in calcium sulphate binder helps stabilise the graft and prevent soft tissue ingress, eliminating the need for an added collagen membrane.

SAFER

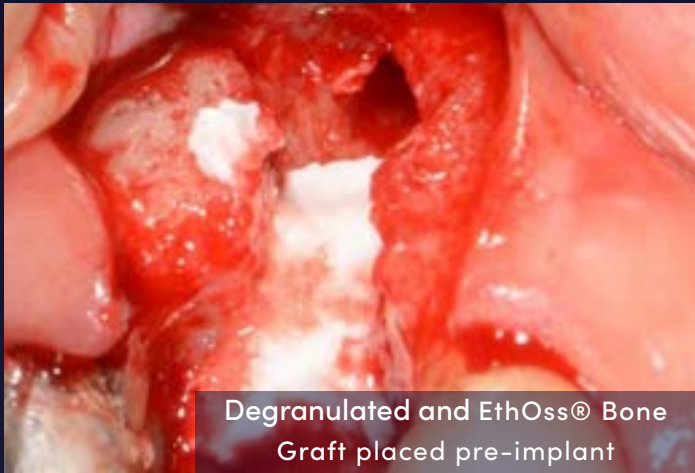
EthOss is 100% synthetic. There's no human or animal content, so no risk of cross contamination.

EASIER

EthOss comes in a handy syringe applicator, in three sizes - 0.25cc, 0.5cc and 1.0cc. It's easy to mix, quick to apply and, because it keeps its volume well, there's no need for over-packing.

STRONGER

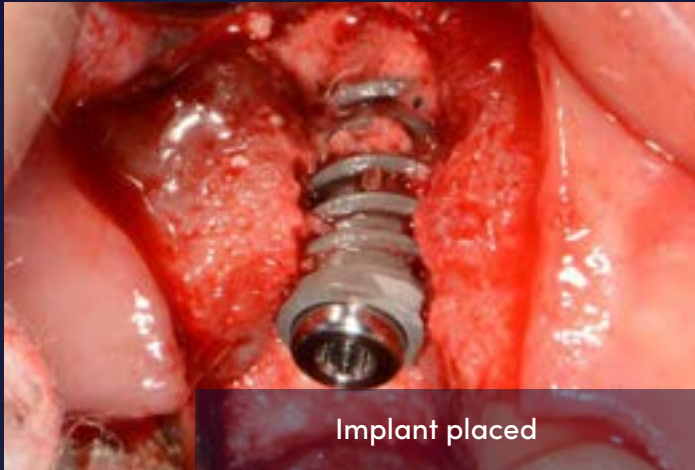
EthOss is fully absorbed into the body, as it's replaced by new healthy host bone.



Degranulated and EthOss® Bone Graft placed pre-implant



Grafted with EthOss® Bone Graft



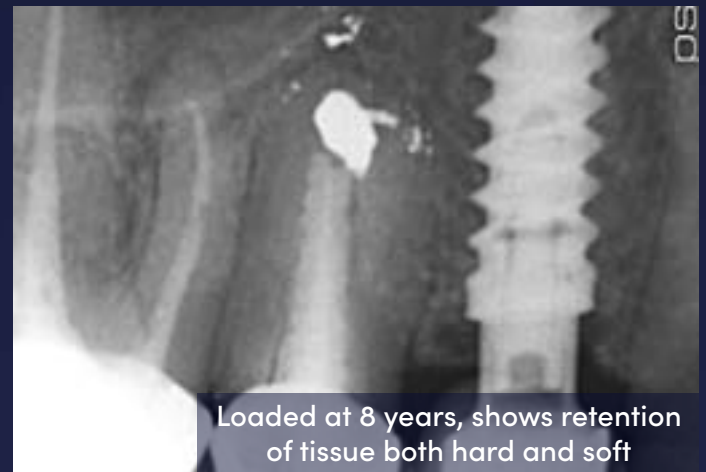
Implant placed



Crown fitted at 4 months



Radiograph - 4 years loaded



Loaded at 8 years, shows retention of tissue both hard and soft



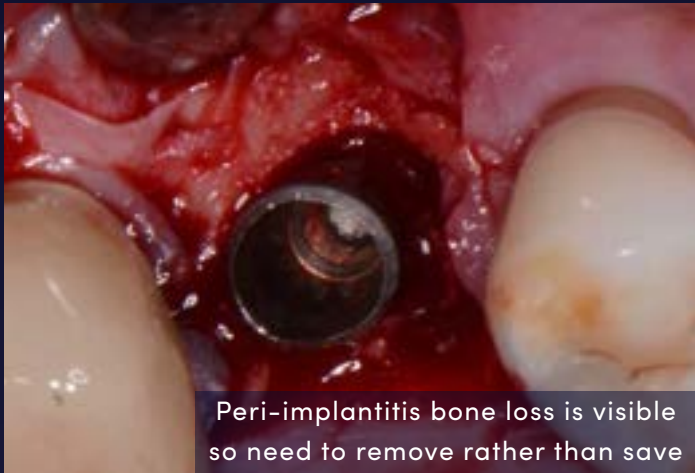
WHY ETHOSS?

EthOss' vision is to **create a world of enlightened smiles** where every patient receives genuine and ethical care.

The cutting-edge bone graft material, EthOss empowers better patient outcomes.

How does it achieve this?

- Clinicians can lead the way by offering completely transparent care to their patients
- Patients can uphold their religious, ethical beliefs and dietary preferences without any compromises
- EthOss uses advanced biocompatible materials to grow stronger bone, with no graft particles left behind



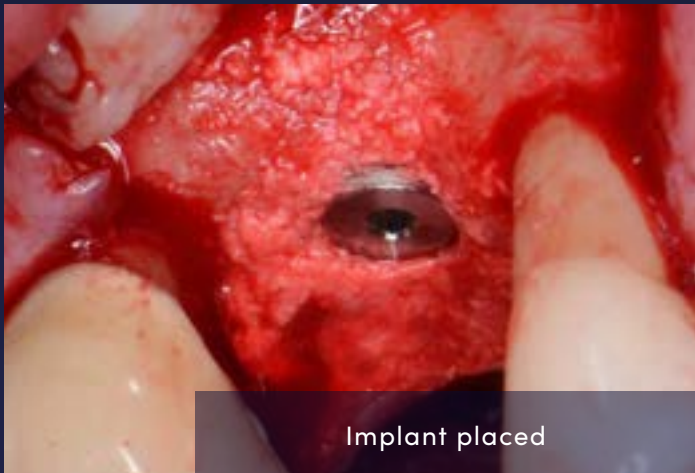
Peri-implantitis bone loss is visible so need to remove rather than save



10 weeks post-op. Excellent new host regenerated bone



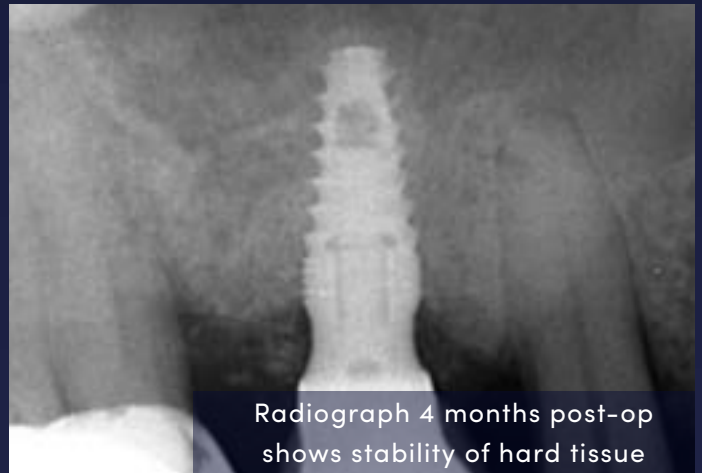
EthOss® Bone Graft material is placed



Implant placed



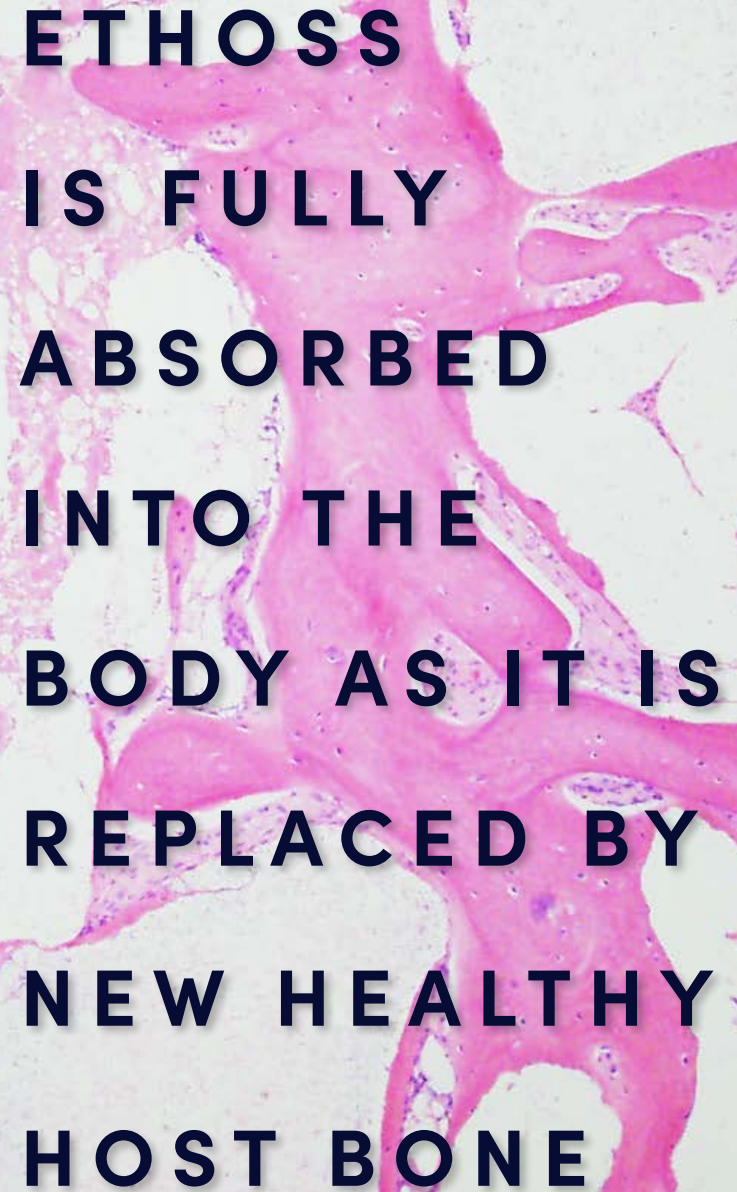
Loading 14 weeks post-op. Healthy attached keratinised tissue



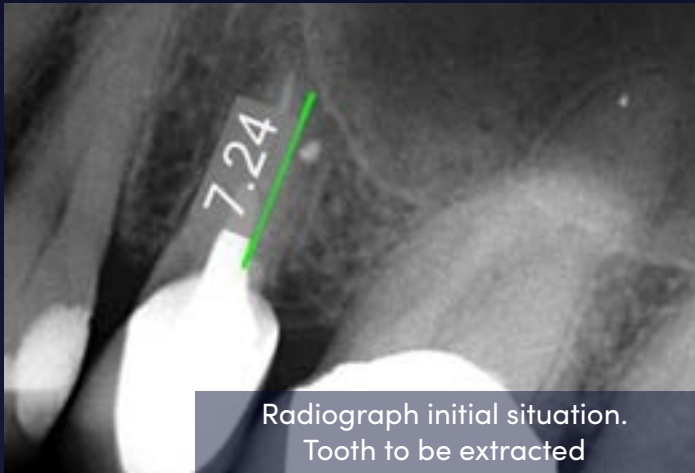
Radiograph 4 months post-op shows stability of hard tissue

**CLINICAL
APPLICATIONS
INCLUDE:**

- **INFRABONY
DEFECTS**
- **ALVEOLAR RIDGE
AUGMENTATION**
- **DENTAL
EXTRACTION SITES**



**ETHOSS
IS FULLY
ABSORBED
INTO THE
BODY AS IT IS
REPLACED BY
NEW HEALTHY
HOST BONE**



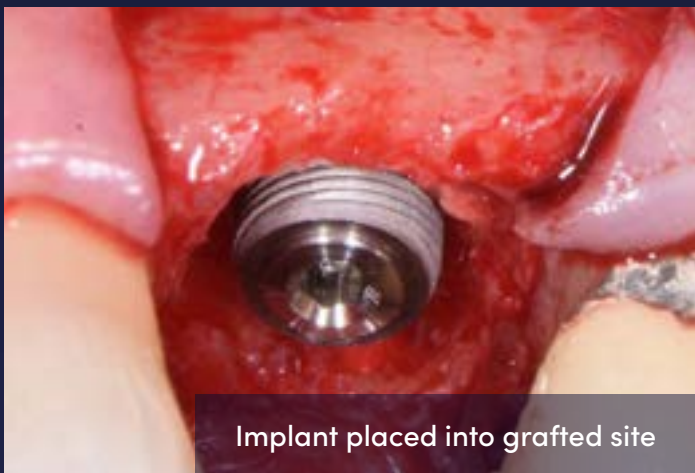
Radiograph initial situation.
Tooth to be extracted



Additional grafting with
drier mix of EthOss® Bone Graft



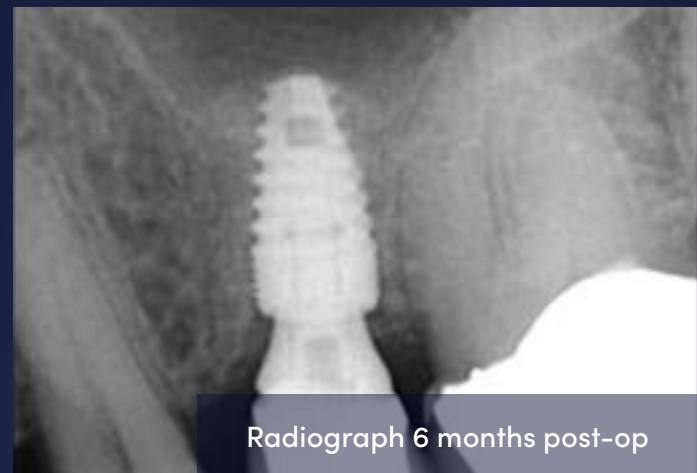
Crestal Osteotomy



Implant placed into grafted site



Flap raised at 10 weeks - new host
bone growing over implant



Radiograph 6 months post-op



EthOss has simplified my bone augmentation procedures. Easy handling, very stable and predictable reproducible results. So dependable, I can't operate without it.

Dr Peter Bouboulos, Australia



Certainly one of the key drivers for how my implant practice has progressed over the years. A stunning concept, executed exceptionally well by folk who 'get it.'

Dr Dominic O'Hooley, UK



EthOss combines mechanical integrity with predictable biologic results - it is a pleasure to use it in my daily practice.

Dr H.L. Tan, Malaysia



I'm delighted to have discovered EthOss - it gives consistent & predictable results, is easy to handle and turns over to new bone quickly.

Dr Nicolas Widmer, Switzerland



The clinical properties of EthOss make it a highly desirable grafting material, providing a modern bone regeneration solution.

Dr Verena Toedtling, UK



EthOss is the ideal bone grafting material. The Calcium Sulphate component not only removes the need for a membrane, but it has bacteriostatic properties which minimise infections.

Dr Costa Nicolopoulos, UAE



The material makes my everyday implantology so predictable and stress-free.

Dr Ludwig Hansson, Sweden



The superior handling combined with excellent clinical results means that for me, EthOss is a must.

Dr Wasim Fazel, UK

FAQS

WHAT IS THE COMPOSITION OF ETHOSS?

EthOss is 65% Beta Tricalcium Phosphate (BTCP) and 35% Calcium Sulphate.

HOW DOES ETHOSS WORK WITHOUT A SEPERATE COLLAGEN MEMBRANE?

Calcium Sulphate has many reported benefits in bone regeneration, including its' ability to set in situ. When EthOss has set it forms a cell occlusive binder, removing the need for a traditional collagen membrane.

HOW LONG DOES IT TAKE FOR ETHOSS TO RESORB?

Both BTCP and Calcium Sulphate are resorbable materials, meaning EthOss will be completely resorbed and replaced by host bone.

Studies have shown that sites grafted with EthOss fully absorb into the body, as it's replaced by new healthy host bone. The remaining EthOss particles will resorb over 6-12 months, leaving no long-term remnant graft particles in the site.

WHAT IS THE RECOMMENDED TREATMENT PROTOCOL WITH ETHOSS?

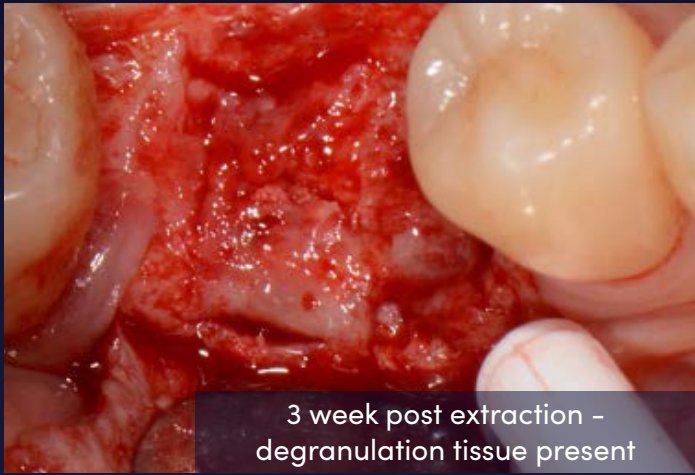
The protocol recommends a 3-4 week healing period post-extraction to allow for soft tissue coverage over the site. The implant is then placed with simultaneous grafting before the site is closed (primary closure, tension-free suturing) and left to heal for 12 weeks.

CAN I USE ETHOSS FOR SOCKET GRAFTING / RIDGE PRESERVATION POST EXTRACTION?

Yes, EthOss can be used in socket grafting. The recommended treatment protocol allows for a 3-4 week period post-extraction for soft tissue healing over the site. This will allow for primary closure when placing the graft.

REFERENCE

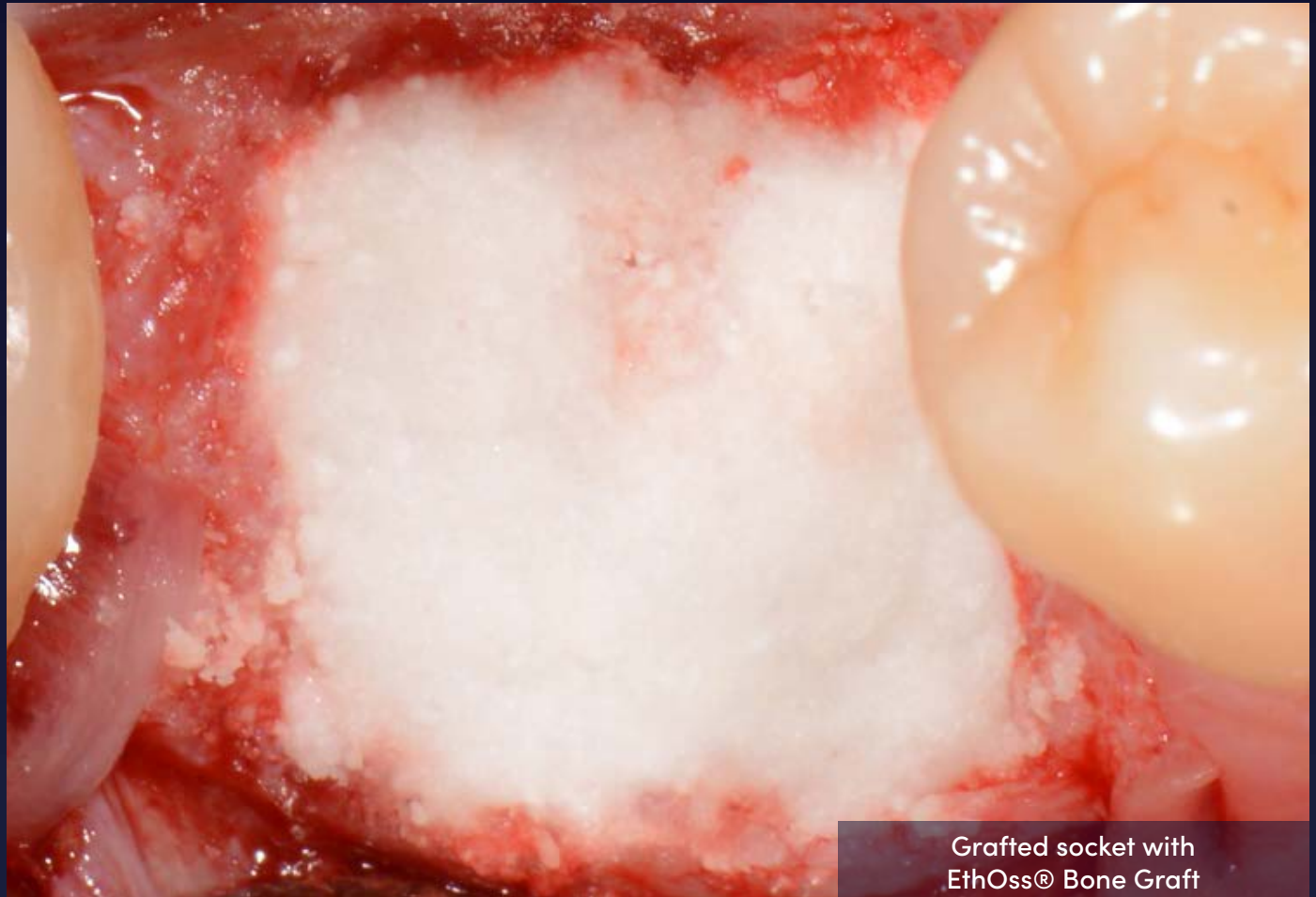
Fairbairn P, Leventis M. Protocol for Bone Augmentation with Simultaneous Early Implant Placement: A Retrospective Multicenter Clinical Study. PubMed



3 week post extraction -
degranulation tissue present



Site cleaned with
EthOss degranulation burs



Grafted socket with
EthOss® Bone Graft



Healed site 12 weeks later



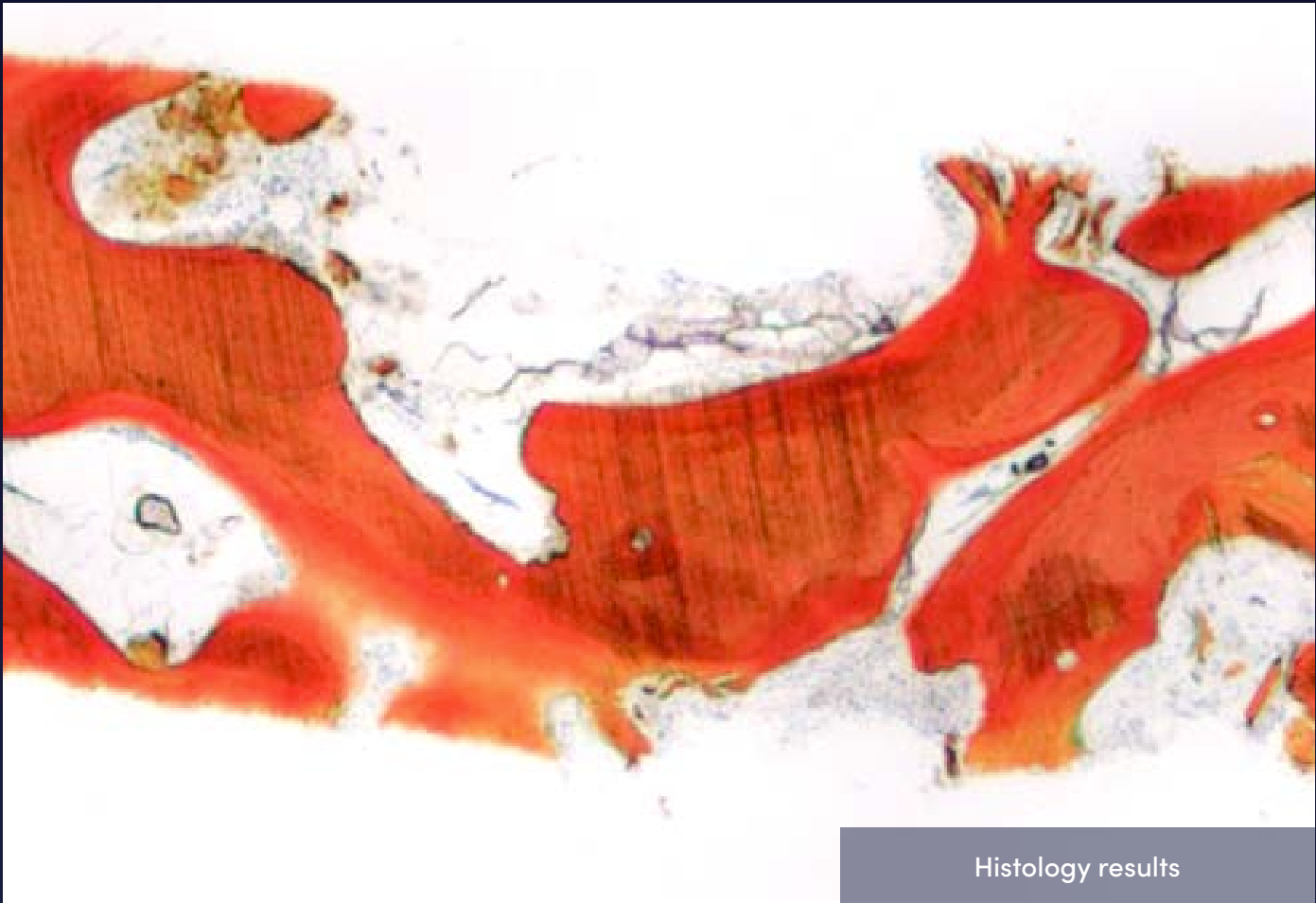
Core sample being taken for
histological analysis



Implant placed - Osstell
meter reading 62 ISQ



Ready to load 10 weeks post-op



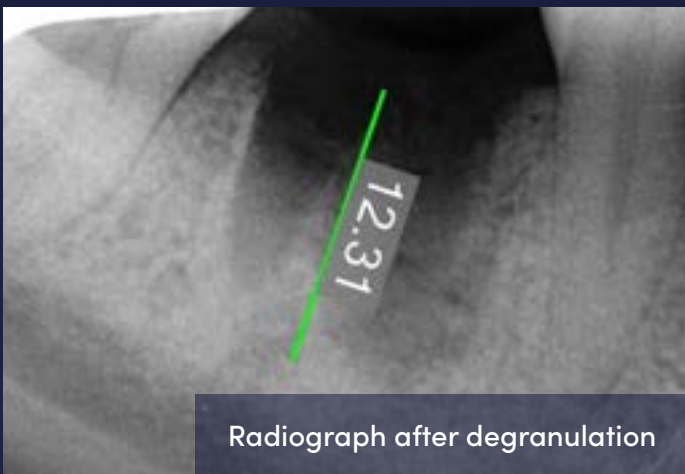
Histology results



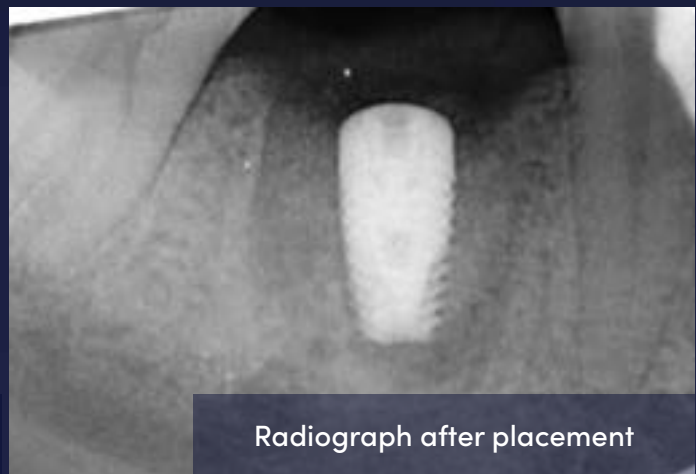
ISQ now reading 75



Loaded case



Radiograph after degranulation



Radiograph after placement

WELCOME TO THE NEW STANDARD.

Ethoss Regeneration Ltd (“Us”, “Our”) will not be liable, or accept responsibility for, any use or application of the products, or the techniques, mentioned in any case studies, articles, newsletters, blogs, brochures or any other media prepared by Us or contained in Our literature, website, social media channels or any other communications. It is the clinician’s responsibility to follow the official guidance related to each of the products as produced by the relevant manufacturer and ensure they are adhering to recommended methods and uses and complying with the correct techniques for use of the products.

All case studies and clinical examples are for illustrative purposes only. Please always refer to the product manufacturer’s guidance as to how to use any products and techniques mentioned in these case studies.

© EthOss Regeneration Ltd, 2023. All rights reserved. Ver. 03_09-2023.
EthOss, ETHOSS, Grow Stronger and GROW STRONGER are registered trademarks of EthOss Regeneration Ltd.

EthOss Regeneration Ltd
8 Ryefield Court, Silsden,
BD20 0DL, UK

Tel: +44 (0) 1535 843106
info@ethoss.dental
www.ethoss.dental



Made from recycled paper.
Please recycle after use.



THE QUEEN'S AWARDS
FOR ENTERPRISE
INTERNATIONAL TRADE
2021