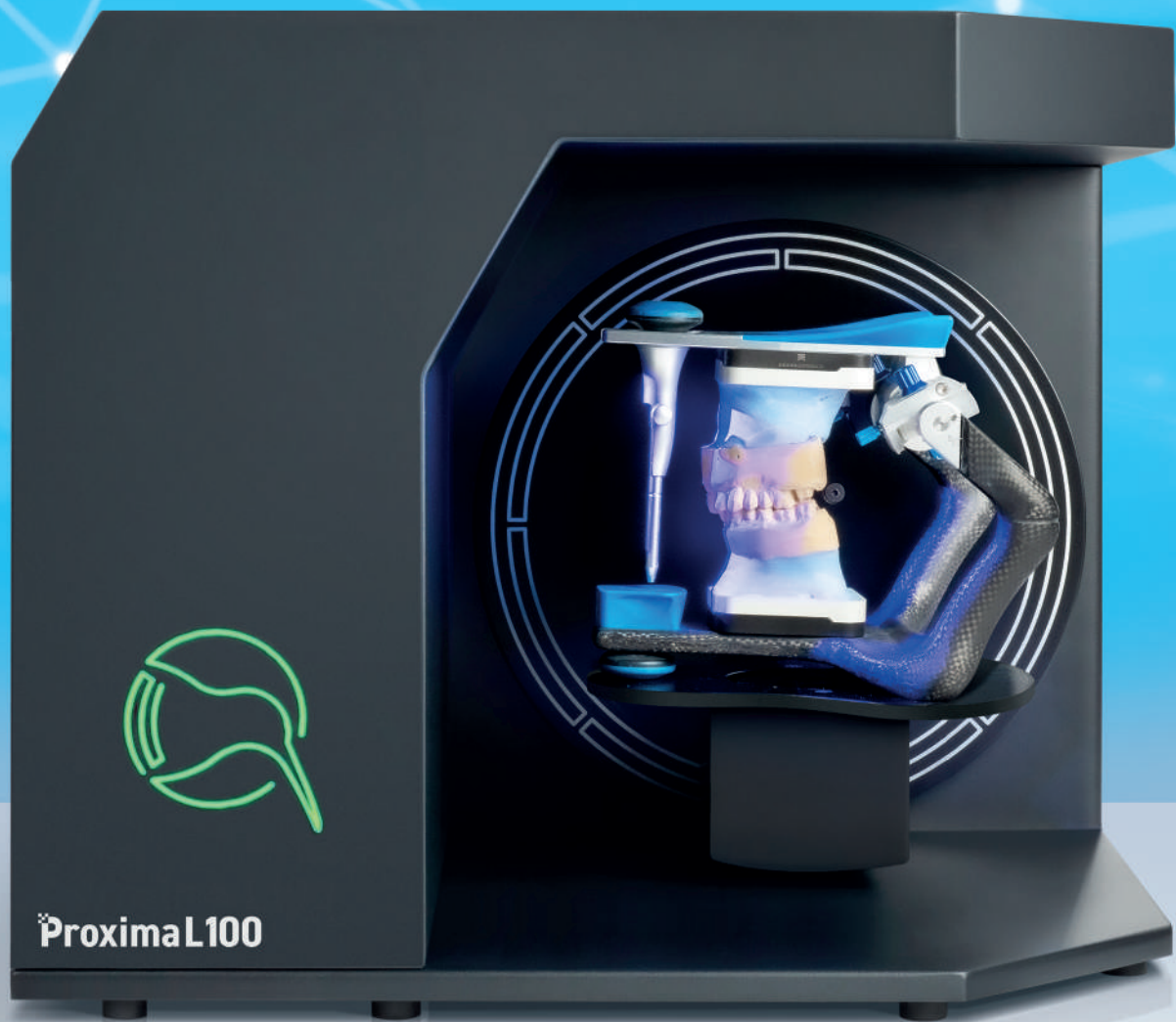


ProximaL100 Model Scanner

Fast Scanning • High Efficiency • Excellent Results



ProximaL100

www.kivitechnologies.com



Kivi Technologies

ABOUT US

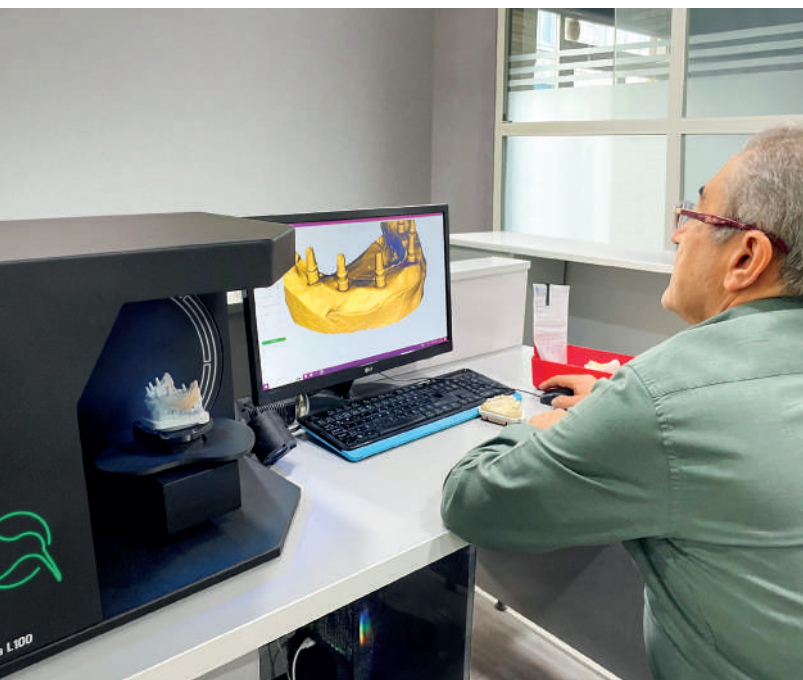
Our Istanbul-based company, **Kivi Technologies**, began operations in 2021 and started producing Turkey's first and only dental 3D scanning systems. Established as a subsidiary of KLASS, a company with half a century of modern production experience and entirely focused on exports, our company continues to manufacture high-tech products.

At **Kivi Technologies**, we develop 3D scanning devices of the highest quality in terms of cost-effectiveness and world standards by producing all software, hardware, and designs in-house. Additionally, we are also developing other 3D scanning systems such as "Intraoral Scanner" and "Facial Scanner."

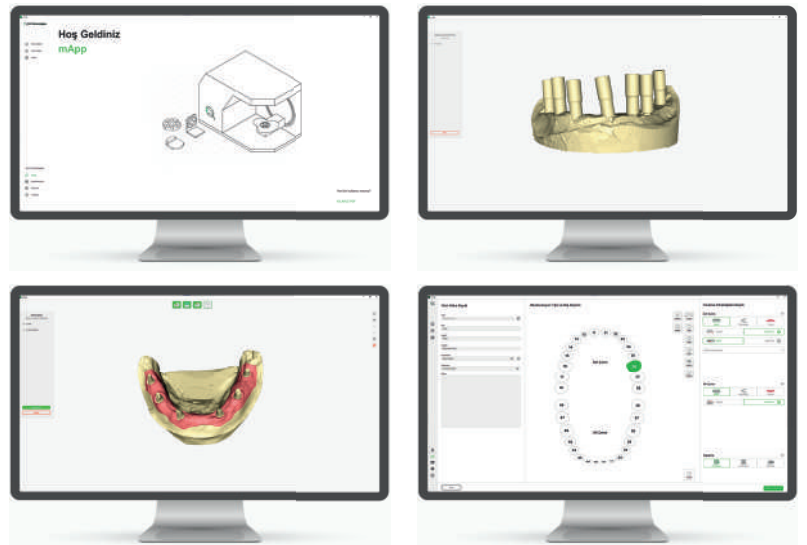
ProximaL100



USER-FRIENDLY INTERFACE



The easily understandable scanning software **mApp** provides a flexible, and seamless user experience. Through **exocad** integration, it streamlines all the workflows you need.



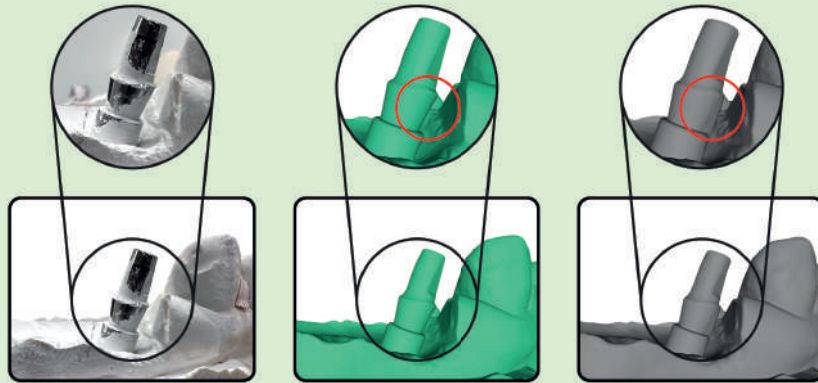
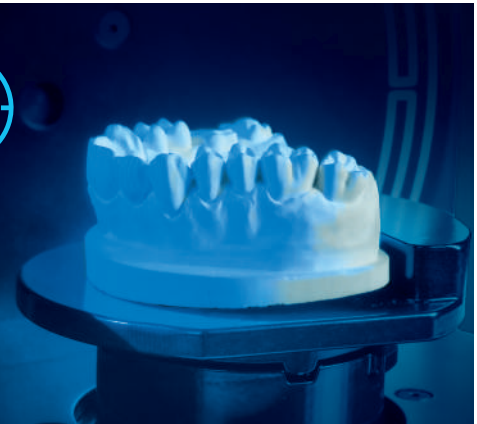
DEVICE FEATURES

Camera	2 x 5 MP
Light Source	RGB LED
Technology	Structured Light
Accuracy	6 microns
Scan Speed (full arch)	18 s
Interface	USB 3.0
Output Format	STL / PLY / OBJ
Dimensions	35 x 48 x 38 cm
Weight	20 kg
Power	100-240 V(AC), 50-60 Hz, 60 W
Guarantee	3 Years





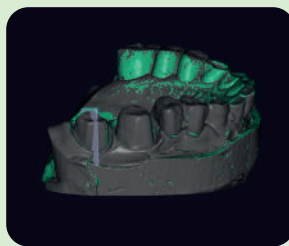
Proxima L100 is equipped with 5MP cameras and state-of-the-art software. Thanks to its superior scanning precision, it allows for detailed scanning of cavities, deep areas, and sharp corners compared to similar scanners, resulting in almost identical results to original models.



Original Model

Proxima L100

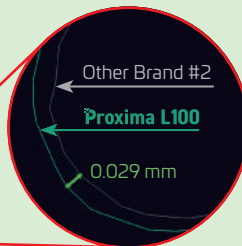
Other Brand #1



Original Model



Cross-section



Other Brand #2

Proxima L100

0.029 mm

Proxima L100 is designed to maximize the efficiency of any laboratory. With advanced algorithms, it can produce high-quality scans in short periods, allowing you to process more cases and speed up your workflows. Comparative studies have proven that **Proxima L100** completes the same cases in a shorter time compared to its competitors.

Proxima L100 → **227s**

Scan Time 166s Completion Time 57s

Alignment Time 4s

Other Brand #1 → **364s**

Scan Time 194s Completion Time 106s

No Alignment Time

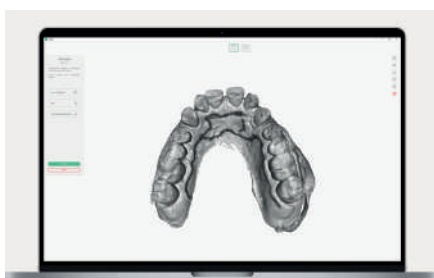
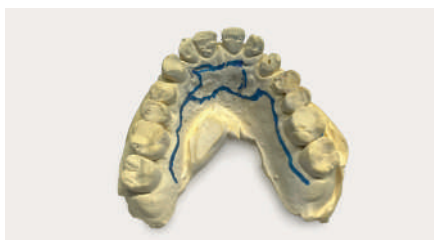
Other Brand #2 → **300s**

Scan Time 188s Completion Time 160s

Alignment Time 16s

TEXTURE SCAN

Proxima L100 facilitates production processes by also recognizing markings drawn on the model that can serve as references during prosthesis manufacturing.



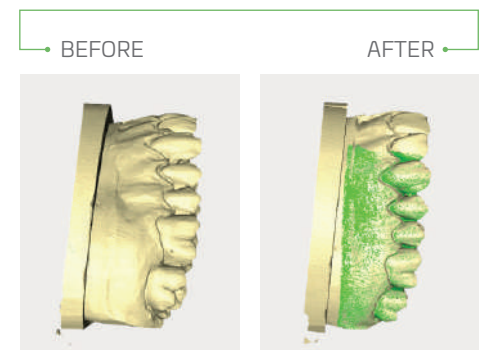
INTELLIGENT SCAN

Proxima L100 offers an innovative alternative to traditional manual scanning processes. Thanks to smart algorithms, automatically calculated angles with a single touch enable detailed scanning of desired areas in a shorter time.



INTERPROXIMAL SCAN

Proxima L100 enables obtaining extremely clear and detailed results even in hard-to-reach areas with a cutting-edge approach. With its unique accessory, **Proxima L100** integrates interproximal scans into regular scans, ensuring the most precise scanning of the interproximal areas for enhanced clarity and detail.



SCAN TYPES

Articulator
Scan



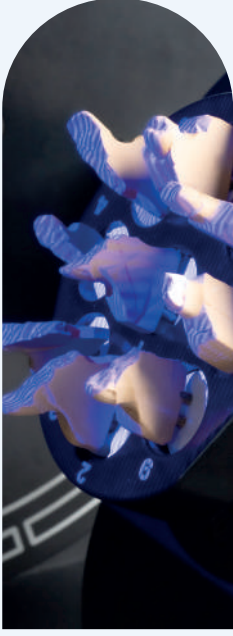
Implant
Scan



Triple Tray
Scan



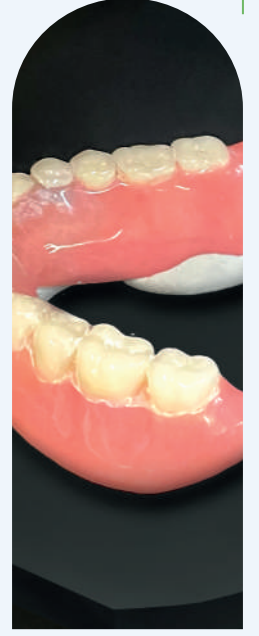
Multi-Die
Scan



Interproximal
Scan



Denture
Scan



IDS 2023



IDEX 2023



Kivi Technologies

www.kivitechnologies.com



Boğaziçi Office

Boğaziçi Üniversitesi Kuzey Kampüsü
Teknopark No: 202 Sarıyer/İstanbul

İTÜ Office

Reşitpaşa Mah. Katar Cad. Arı Teknokent 2
B Blok No: 4/2/106 Sarıyer / İstanbul
Telefon: +90 (212) 358 28 55

info@kivitechnologies.com

[@kivitechnologies](https://www.instagram.com/kivitechnologies)

[@kivitechnologies](https://www.linkedin.com/company/kivitechnologies)