

BENDER II[®]

Chairside Fixed Retainer Bending Robot





BENDER II[®]

Lingual Fixed Retainers in 5 minutes

Physical Specifications

Dimensions	400 x 240 x 285mm (15.7 x 9.6 x 11.2 inch)
Net weight	15kg (33lbs)

01. Chairside Solution

BENDER II[®] is compact and efficient, fitting seamlessly into any clinical setting like a personal printer. Perfect for in-office retainer bending, it enhances your orthodontic practice with its streamlined design.

02. No Second Visit

BENDER II[®] enhances your workflow by allowing same-day retainer bonding right after debonding, using only a patient's scan. It eliminates the need for stone models and costly lab fees, optimizing both time and expense.

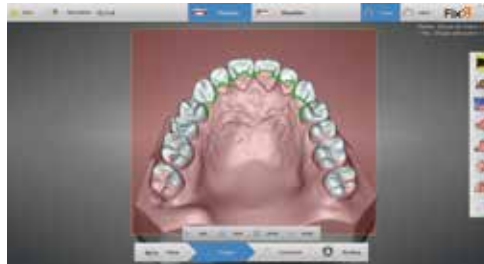
03. Optimized Efficiency

BENDER II[®] simplifies wire bending and enables you to allocate skilled staff to more critical tasks, enhancing productivity by freeing up valuable resources from routine busy work.

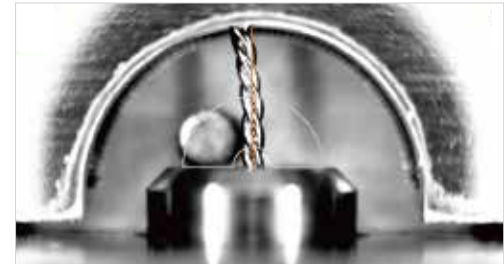
3D Scanning



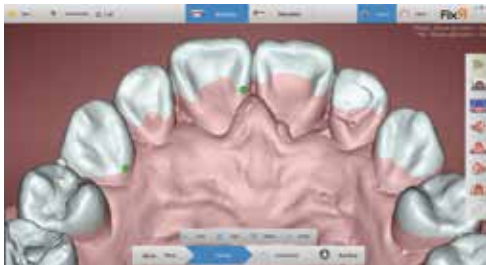
Wire Design (1min)



Wire Bending (4min)



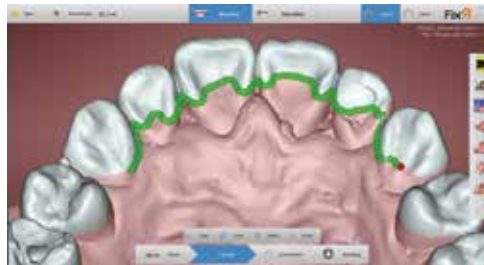
FixR Streamlined User Interface



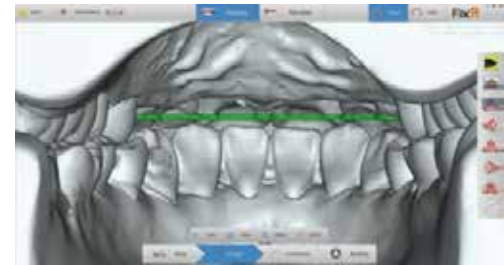
Click 3 points

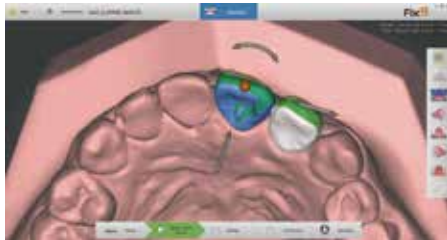


Auto Design by FixR



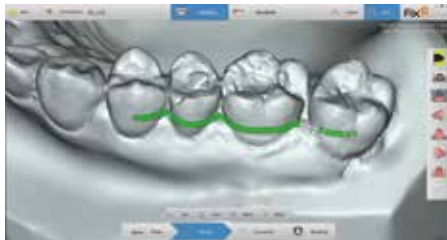
Occlusion Check





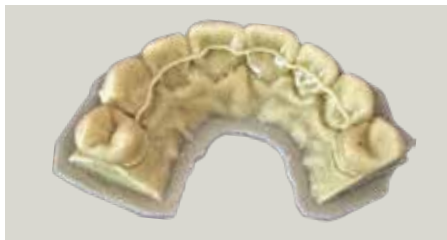
Precision Minor Tooth Movement

Achieve precise adjustments in anterior teeth positioning—perfecting intrusion, extrusion, rotation, and alignment for enhanced treatment outcomes.



Labial Splinting

Utilize labial wire effectively for splinting to maintain spacing after primary teeth loss, ensuring optimal space management in developing dentition.






Fixed Retainer Design STL Export

Streamline your workflow with our feature that allows for the export of STL files for fixed retainers, thereby eliminating the need for a second intraoral scan when creating overlay clear retainers.







Compatible Wires

BENDER II® is exclusively designed to fabricate fixed retainers, this machine processes straight, stainless steel wire strands in solid round, twist, square, or rectangular varieties, delivering precision and adaptability in retainer construction.



Solid Round Wires

BENDER #	SIZE (in)	SIZE (mm)	SHAPE	COMPANY	REFERENCE #
B45S	0.018	0.45		Dentaurum – Remanium	535-045-00
B50S	0.020	0.50		Dentaurum – Remanium	535-002-00
				G&H – SS Spring Tempered Wire	STSS020
B66S	0.026	0.66		G&H – SS Spring Tempered Wire	STSS026

Twist Wires

BENDER #	SIZE (in)	SIZE (mm)	SHAPE	TWISTED	COMPANY	REFERENCE #
B45T	0.018	0.45			Dentaurum – DentaFlex	545-745-00
B50T	0.020	0.50			Dentaurum – DentaFlex	545-750-00
B55TG	0.215	0.55			DynaFlex – PENTA TWIST RETAINER WIRES	25-ZMRW

Square/Rectangular Wires

BENDER #	SIZE (in)	SIZE (mm)	SHAPE	COMPANY	REFERENCE #
B16R	0.016 x 0.016	0.41 x 0.41		Dentaurum – Remanium	537-340-00
				G&H – SS Spring Tempered Wire	STSS1616
B22R	0.016 x 0.022	0.41 x 0.56		Dentaurum – Remanium	537-310-00

Why choose BENDER II® ?

♦ 8 Wire Varieties

BENDER II® offers versatility with the ability to exclusively accommodate one specific wire type per unit. Select from our extensive range of compatible wires – available in eight distinct varieties – to perfectly suit your clinical needs and preferences.

♦ Time and Cost Efficient

BENDER II® allows you to design and fabricate fixed retainers directly in your office in just 5 minutes, at an average cost of only \$2 per retainer, streamlining both process and expenses.

♦ Versatile and Customizable Design

BENDER II® provides the flexibility to tailor each retainer for the perfect patient fit. Customize surface contact to ensure maximum comfort and precise treatment outcomes.



YOAT Corporation 19105 36th Ave W Suite 209, Lynnwood, WA 98036
T. +1 (425) 967-6165 **E.** sales@yoatcorp.com **W.** www.yoatcorp.com