








Technical Specifications



				
SPF3308M Ø 3.3×8.5	SPF3310M Ø 3.3×10.0	SPF3311M Ø 3.3×11.5	SPF3313M Ø 3.3×13.0	
				
SPF3607R Ø 3.6×7.0	SPF3608R Ø 3.6×8.5	SPF3610R Ø 3.6×10.0	SPF3611R Ø 3.6×11.5	SPF3613R Ø 3.6×13.0
				
SPF4007R Ø 4.0×7.0	SPF4008R Ø 4.0×8.5	SPF4010R Ø 4.0×10.0	SPF4011R Ø 4.0×11.5	SPF4013R Ø 4.0×13.0
				
SPF4507R Ø 4.5×7.0	SPF4508R Ø 4.5×8.5	SPF4510R Ø 4.5×10.0	SPF4511R Ø 4.5×11.5	SPF4513R Ø 4.5×13.0
				
SPF5007R Ø 5.0×7.0	SPF5008R Ø 5.0×8.5	SPF5010R Ø 5.0×10.0	SPF5011R Ø 5.0×11.5	SPF5013R Ø 5.0×13.0

Unique design



Optimized Package and Ergonomics Usage



The innovative system of dental implants Splant is a Korean company which offers the dentists the best solutions of the highest quality and accuracy in implantology



Experience

We develop, produce and implement reliable and quality implants systems based on long-term experience and research of world leaders in the field.

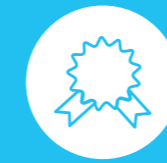
We have been focusing on the development and manufacturing of dental implants and their by products.



Reliability

One of the valuable properties of titanium is its biological compatibility with bone. Alloy with human body tissues makes titanium the most promising material for manufacture of implants.

Besides, the surface treated with HA powder which is the component of the bone. It affects the stabilities of the osseointegration.



Quality

We conduct continuous and systematic quality control of all products which is confirmed by international quality standards ISO 13485.

And the products have CE Certificate; in addition, they have been certified in many countries of the world.



Warranty

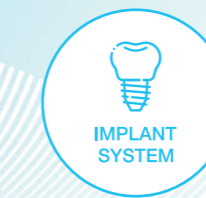
Dedicated QA department works 24 hours a day 7 days a week and ensures the highest possible standards and quality of our products and the provision of a lifetime warranty for our dental implants.



IDIS

IDIS Co., Ltd. Professional Dental supply

#1317, Sambo Techno Tower,
122, Jomaru-ro 385 beon-gil, Bucheon-si, Gyeonggi-do, Republic of Korea
Tel + 82 - 32 - 719 - 4068, 4069 Fax + 82 - 32 - 719 - 4065
www.idiskorea.com

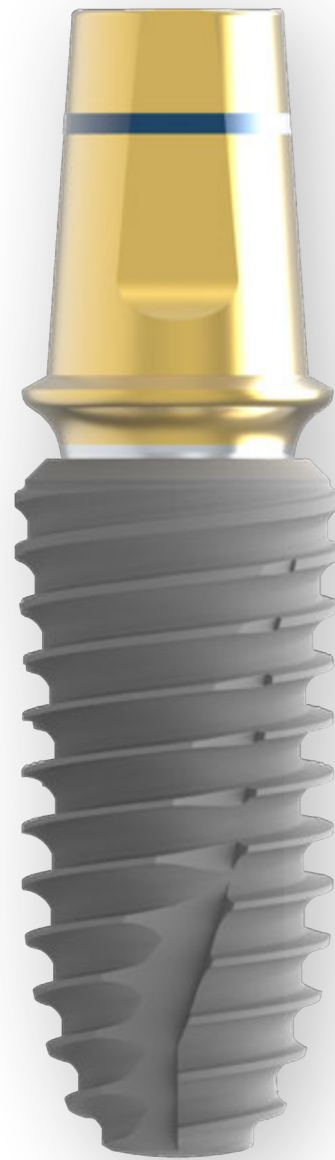


Dental Implant Systems

IDIS

| COMPANY INTRODUCTION |

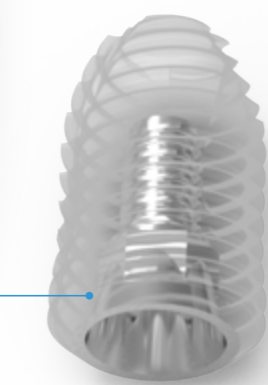
Technical Specifications



- ✓ Cutting line for Laboratory technician
- ✓ Prevent the rotation of crown
- ✓ Aesthetic
All abutment are treated with TiN coating to ensure excellent aesthetics under the tissue
- ✓ Minimized screw loosening
30° Tapered locking screw head and the abutment fit with friction, affects the cold weld
- ✓ Strong Conical Connection
Internal conical connection with Hexagonal offers high mechanical strength. Influences well on the stability process of permanent dental prostheses

Strong Conical Connection

Internal conical connection with Hexagonal offers high mechanical strength. Influences well on the stability process of permanent dental prostheses

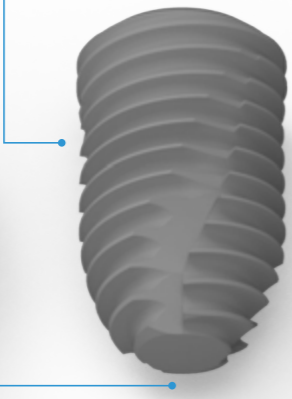


Prevent damage

Curving in apical part design can prevent from the damage of anatomical bone structure

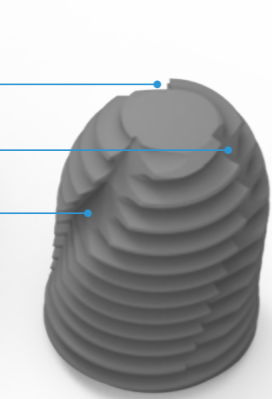
Contain chip bone

Keep the bone in S pocket, during the implantation and it improves the osseointegration



Adjustment of implant position

3 spiral round Cutting blade on the apex enable to adjust the implant position during the placement and accommodates bone chips

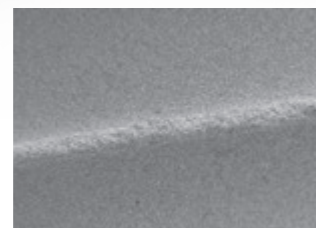


High Primary stability

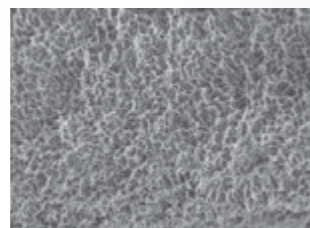
Unique implant design helps to achieve high primary stability in the case of soft bone or extraction sockets

Unique implant design

S pocket It gives less torque and less bone loss during the implantation



×100



500um

×1.00k

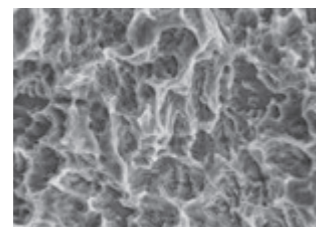
50.0um

Easy insertion

Double thread provides shorten placement time. And secures early fixation for weak bone condition

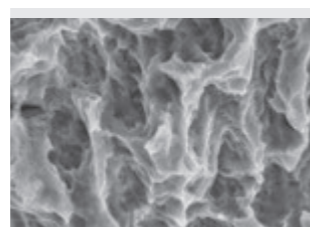
HA Sandblasting & Etching

Sandblasting with Hydroxyapatite (HA) and acid etching to improve surface roughness as a surface treatment



×5.00k

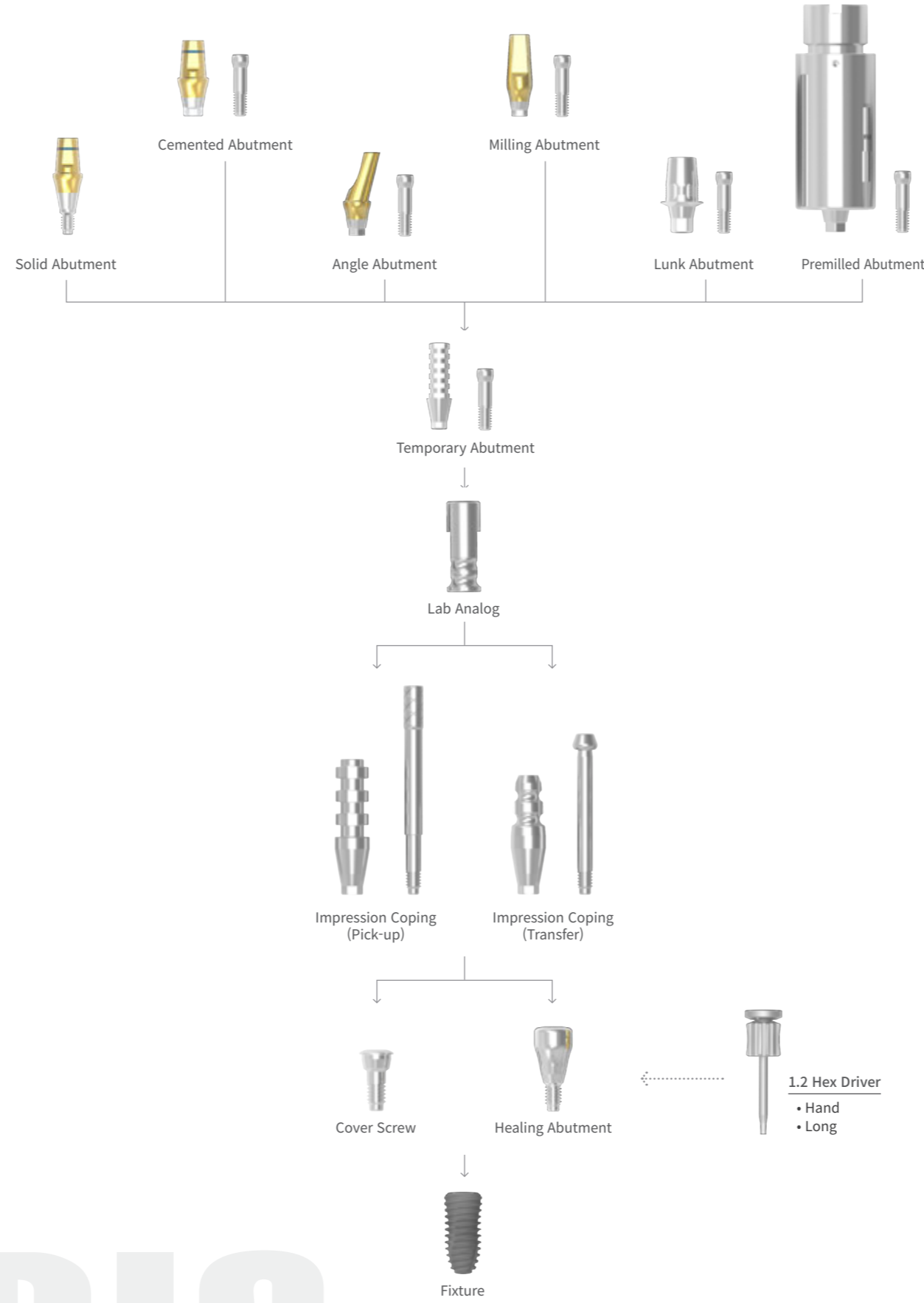
10.0um



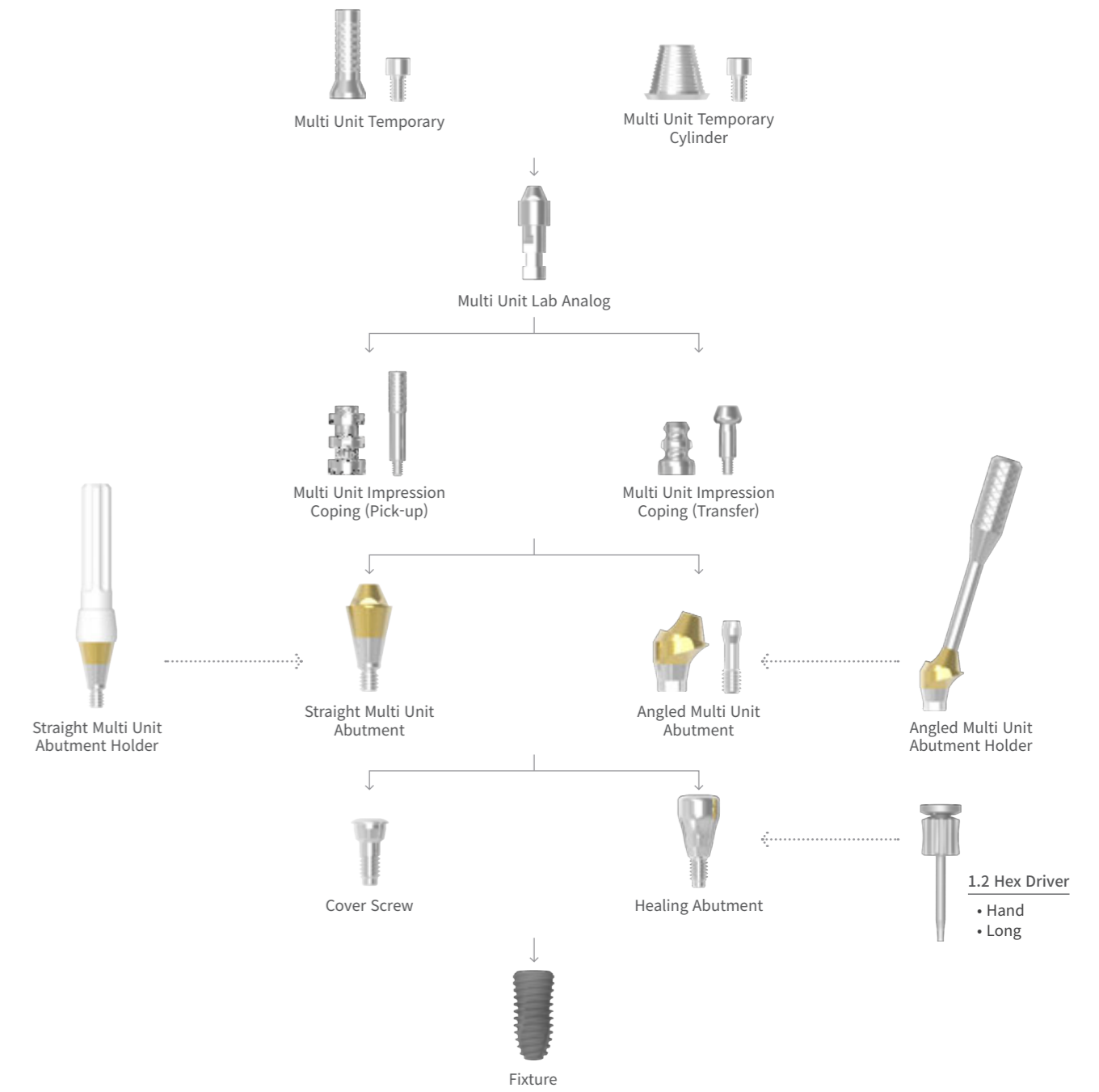
×10.0k

5.00um

General / Digital Prosthetic System

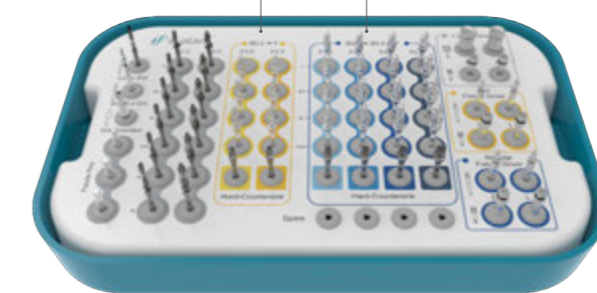


Multi Unit System



Surgical Kit

Yellow is for mini connection, Blue is for regular connection



PACKAGE I

IDIS