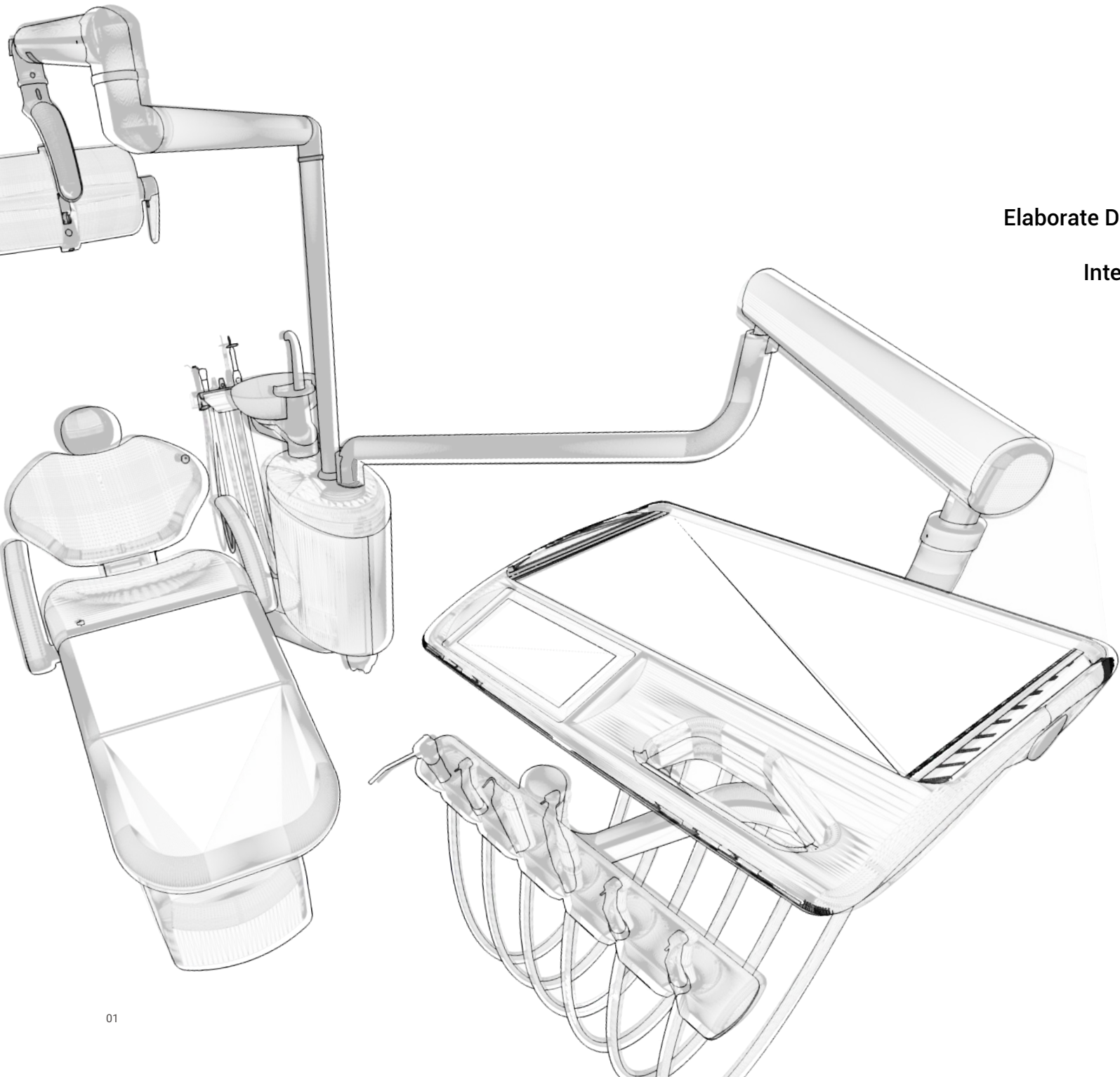


lifedent



INNOVATIVE TECHNOLOGY, EXCELLENT QUALITY

**PROFESSIONAL DENTAL EQUIPMENT
MANUFACTURER**



Elaborate Design

Intently Research

Strictly Quality Control

About us



Lifedent (Zhuhai) Co., Ltd. is a professional manufacturer of dental equipment, focusing on the R&D, manufacturing, sales and service of high-end dental medical equipment. With dental unit, steam sterilizer, dental x-ray unit, oil-less air compressor, dental electric suction unit, central air supply system, central air suction system and other product lines. Lifedent is committed to providing medical institutions with one-stop dental basic equipment overall solution.

Lifedent is located in the beautiful coastal city of Zhuhai, China. Since its founding in 2022, Lifedent has been adhering to the concept of pursuing excellent quality, advocating scientific and technological innovation, continuously investing in R&D and striving to become an excellent brand of dental medical equipment in China while maintaining high technology level and high-quality product.

In the future, Lifedent will continue to pay attention to clinical needs, improve product innovation, keep advantages of high-end manufacturing, and contribute to the development of the dental industry.

lifedent



E9-i

- ▶ European-style whip-arm instrument table
- ▶ V5 LED dental light
- ▶ Electronic simulation controlling technology
- ▶ Inner-track electric dental chair

Electronic Simulation Controlling Technology

- 3 doctor programs for user personalized settings, 15 intelligent programmed positions.
- Dentist element uses a 7-inch touchscreen and a user-friendly interface design for easy operation.
- Dynamic instruments interlock, safe and reliable.
- The assistant instrument table has a touch control panel.

Safety and Infection Controlling

- Self-checking procedures when power-on, error code report, safety protection for backrest descending, chair seat descending protection, chair-Instrument interlock, emergency stop by one button.
- The active anti-suction system of the dynamic instrument, extended suction time, optional automatic tubing flushing and disinfection system with one button, reduce cross-infection.

Inner-track Linkage Design

- The electric dental chair adopts the Inner-track linkage design, which is in line with ergonomics. During the movement of the backrest, the seat moves back and forth to achieve excellent movement compensation and improve comfort.
- The soft starter system ensures the start and stop of the dental chair are stable without any bumps.
- Angle sensor technology ensures accurate chair position memories, no cumulative error and a low failure rate.
- Press-type dual-jointed headrest, ultra-thin cast aluminum backrest, dual-structure seat, clip-on fixation for upholstery which is easy to assemble, clean and maintain.

Humanization Design

- Detachable ceramic spittoon, cup filler and suction system for cleaning.
- Metal HV suction/saliva ejector handle, detachable for cleaning and sterilization.
- 2-liter large capacity water bottle, the design of adding water over the top, easy and convenient.
- Optional dynamic instruments water heating system for customized requirements.
- Main switch for water, electricity and air.

Multifunctional Foot Control

- Memory position control, chair adjustment, linkage program control, cup filler and spittoon flushing control, dynamic instrument with/without water, chip blow, dental light on/off, emergency stop function.

The assistant instrument table has a 28*18cm tray, HV suction/saliva ejector is activated by photoelectric induction switch



- ▶ International Hanging Instrument Table
- ▶ V5 LED Dental Light
- ▶ Electronic Simulation Controlling Technology
- ▶ Inner-track Electric Dental Chair

Electronic Simulation Controlling Technology

- 3 doctor programs for user personalized settings, 15 intelligent programmed positions.
- Dentist element uses a 7-inch touchscreen and a user-friendly interface design for easy operation.
- On/off of all the dynamic instruments can be controlled by the photoelectric sensors.
- Dynamic instruments interlock, safe and reliable.
- The assistant instrument table has a touch control panel.

Safety and Infection Controlling

- self-checking procedures when power-on, error code report, safety protection for backrest descending, chair seat descending protection, chair-Instrument interlock, emergency stop by one button.
- The active anti-suction system of the dynamic instrument, extended suction time, optional automatic tubing flushing and disinfection system with one button, reduce cross-infection.

Inner-track Linkage Design

- The electric dental chair adopts the Inner-track linkage design, which is in line with ergonomics. During the movement of the backrest, the seat moves back and forth to achieve excellent movement compensation and improve comfort.
- The soft starter system ensures the start and stop of the patient chair are stable without any bumps.
- Angle sensor technology ensures accurate chair position memories, no cumulative error and a low failure rate.
- Press-type dual-jointed headrest, ultra-thin cast aluminum backrest, dual-structure seat, clip-on fixation for upholstery which is easy to assemble, clean and maintain.

Humanization Design

- Detachable ceramic spittoon, cup filler and suction system for cleaning.
- Metal HV suction/saliva ejector handle, detachable for cleaning and sterilization.
- 2-liter large capacity water bottle, the design of adding water over the top, easy and convenient.
- Optional dynamic instruments water heating system for customized requirements.
- Main switch for water, electricity and air.

Multifunctional Foot Control

- Memory position control, chair adjustment, linkage program control, cup filler and spittoon flushing control, dynamic instrument with/without water, chip blow, dental light on/off, emergency stop function.



E9-t

Electronic Simulation Controlling Technology

- 3 doctor programs for user personalized settings, 15 intelligent programmed positions.
- Dentist element uses a 7-inch touchscreen and a user-friendly interface design for easy operation.
- On/off of all the dynamic instruments can be controlled by the photoelectric sensors.
- Dynamic instruments interlock, safe and reliable.
- The assistant instrument table has a touch control panel.

Safety and infection Controlling

- Self-checking procedures when power-on, error code report, safety protection for backrest descending, chair seat descending protection, chair-Instrument interlock, emergency stop by one button.
- The active anti-suction system of the dynamic instrument, extended suction time, optional automatic tubing flushing and disinfection system with one button, reduce cross-infection.

Inner-track Linkage Design

- The electric dental chair adopts the Inner-track linkage design, which is in line with ergonomics. During the movement of the backrest, the seat moves back and forth to achieve excellent movement compensation and improve comfort.
- The soft starter system ensures the start and stop of the patient chair are stable without any bumps.
- Angle sensor technology ensures accurate chair position memories, no cumulative error and a low failure rate.
- Press-type dual-jointed headrest, ultra-thin cast aluminum backrest, dual-structure seat, clip-on fixation for upholstery which is easy to assemble, clean and maintain.

Humanization Design

- Detachable ceramic spittoon, cup filler and suction system for cleaning.
- Metal HV suction/saliva ejector handle, detachable for cleaning and sterilization.
- 2-liter large capacity water bottle, the design of adding water over the top, easy and convenient.
- Optional dynamic instruments water heating system for customized requirements.
- Main switch for water, electricity and air.

Multifunctional Foot Control

- Memory position control, chair adjustment, linkage program control, cup filler and spittoon flushing control, dynamic instrument with/without water, chip blow, dental light on/off, emergency stop function.

▶ Cart Version Instrument Table

▶ V5 LED Dental Light

▶ Electronic Simulation Controlling Technology ▶ Inner-track Electric Dental Chair



- ▶ Movable Cart Instrument Table
- ▶ Dental intraoral camera and screen
- ▶ Multifunctional LED light L500
- ▶ Medical Stainless Steel Instrument Tray
- ▶ Electronic Simulation Controlling Technology
- ▶ Inner-track Electric Dental Chair

The assistant instrument table has a 28*18cm tray , HV suction/ saliva ejector is controlled by photoelectric induction switch



Electronic Simulation Controlling Technology

- 3 doctor programs for user personalized settings, 15 intelligent programmed positions.
- Dentist element uses a 7-inch touchscreen and a user-friendly interface design for easy operation.
- On/off of all the dynamic instruments can be controlled by the photoelectric sensors.
- Dynamic instruments interlock, safe and reliable.
- The assistant instrument table has a touch control panel.

Safety and Infection Controlling

- Self-checking procedures when power-on, error code report, safety protection for backrest descending, chair seat descending protection, chair-Instrument interlock, emergency stop by one button.
- The active anti-suction system of the dynamic instrument, extended suction time, optional automatic tubing flushing and disinfection system with one button, reduce cross-infection.

Inner-track Linkage Design

- The electric dental chair adopts the Inner-track linkage design, which is in line with ergonomics. During the movement of the backrest, the seat moves back and forth to achieve excellent movement compensation and improve comfort.
- The soft starter system ensures the start and stop of the patient chair are stable without any bumps.
- Angle sensor technology ensures accurate chair position memories, no cumulative error and a low failure rate.
- Press-type dual-jointed headrest, ultra-thin cast aluminum backrest, dual-structure seat, clip-on fixation for upholstery which is easy to assemble, clean and maintain.

Humanization Design

- Detachable ceramic spittoon, cup filler and suction system for cleaning.
- Metal HV suction/saliva ejector handle, detachable for cleaning and sterilization.
- 2-liter large capacity water bottle, the design of adding water over the top, easy and convenient.
- Optional dynamic instruments water heating system for customized requirements.
- Main switch for water, electricity and air.

Multifunctional Foot Control

- Memory position control, chair adjustment, linkage program control, cup filler and spittoon flushing control, dynamic instrument with/without water, chip blow, dental light on/off, emergency stop function.

P3-i

Intelligent Linkage Program

- The touch panel is standard for doctor/assistant element.
- 3 doctor programs for user personalized settings, 15 intelligent programmed positions.
- Intelligent linkage program, cup filling, bowl rinsing, chair position and dental light on/off are controlled by one button, improving work efficiency.

Safety and Infection Controlling

- Chair-Instrument interlock, chair seat movement protection, emergency stop by one button.
- Automatic tubing flushing and disinfection system with one button(optional), reduces cross-infection.

Electric Dental Chair

- The soft starter system ensures the start and stop of the patient chair are stable without any bumps.
- Angle sensor technology ensures accurate chair position memories, no cumulative error and low failure rate.
- Ultra-thin cast aluminum backrest, clip-on fixation for upholstery which is easy to assemble, clean and maintain.
- 380mm ultra-low chair position which meets various clinical requirements.

Humanization Design

- Detachable ceramic spittoon, cup filler and suction system for cleaning.
- Metal HV suction/saliva ejector handle, detachable for cleaning and sterilization.
- 2-liter large capacity water bottle, the design of adding water over the top, easy and convenient.
- Optional dynamic instruments water heating system for customized requirements.
- Main switch for water, electricity and air.
- The built-in drainage design makes the room cleaner and tidier.

Multifunctional Foot Control

- Memory position control, chair adjustment, linkage program control, cup filler and spittoon flushing control, dynamic instrument with/without water, chip blow, dental light on/off, emergency stop function.

▶ European-style Whip arm Instrument Table

▶ V2 LED Dental Light

▶ Standard Electric Dental Chair

▶ Intelligent Linkage Program



- ▶ International Hanging Instrument Table
- ▶ Standard Electric Dental Chair
- ▶ V2 LED Dental Light
- ▶ Intelligent Linkage Program



Intelligent Linkage Program

- The touch panel is standard for doctor/assistant element.
- 3 doctor programs for user personalized settings, 15 intelligent programmed positions.
- Intelligent linkage program, cup filling, bowl rinsing, chair position and dental light on/off are controlled by one button, improving work efficiency.

Safety and Infection Controlling

- Chair-Instrument interlock, chair seat movement protection, emergency stop by one button.
- Automatic tubing flushing and disinfection system with one button(optional), reduces cross- infection.

Electric Dental Chair

- The soft starter system ensures the start and stop of the patient chair are stable without any bumps.
- Angle sensor technology ensures accurate chair position memories, no cumulative error and low failure rate.
- Ultra-thin cast aluminum backrest, clip-on fixation for upholstery which is easy to assemble, clean and maintain.
- 380mm ultra-low chair position which meets various clinical requirements.

Humanization Design

- Detachable ceramic spittoon, cup filler and suction system for cleaning.
- Metal HV suction/saliva ejector handle, detachable for cleaning and sterilization.
- 2-liter large capacity water bottle, the design of adding water over the top, easy and convenient.
- Optional dynamic instruments water heating system for customized requirements.
- Main switch for water, electricity and air.
- The built-in drainage design makes the room cleaner and tidier.

Multifunctional Foot Control

- Memory position control, chair adjustment, linkage program control, cup filler and spittoon flushing control, dynamic instrument with/without water, chip blow, dental light on/off, emergency stop function.

P3-t

Intelligent Linkage Program

- The touch panel is standard for doctor/assistant element.
- 3 doctor programs for user personalized settings, 15 intelligent programmed positions.
- Intelligent linkage program, cup filling, bowl rinsing, chair position and dental light on/off are controlled by one button, improving work efficiency.

A brand new delivery system

- Can be flexibly moved to various positions to meet various treatment position requirements.
- Achieved spatial zoning for doctors and patients, providing patients with a larger, more comfortable, and pressure-free environment.

Compact packaging design

- 80cm width, easily fits the entire box into the consulting room.
- Efficient utilization of space, reducing inventory space pressure.
- Can achieve fast installation in an average of 30 minutes.

Electric Dental Chair

- The soft starter system ensures the start and stop of the patient chair are stable without any bumps.
- Angle sensor technology ensures accurate chair position memories, no cumulative error and low failure rate.
- Ultra-thin plastic backrest, clip-on fixation for upholstery which is easy to assemble, clean and maintain.
- 380mm ultra-low chair position which meets various clinical requirements.

Humanization Design

- Detachable ceramic spittoon, cup filler and suction system for cleaning.
- 2-liter large capacity water bottle, the design of adding water over the top, easy and convenient.
- Optional dynamic instruments water heating system for customized requirements.

Multifunctional Foot Control

- Memory position control, chair adjustment, linkage program control, cup filler and spittoon flushing control, dynamic instrument with/without water, chip blow, dental light on/off, emergency stop function.

▶ A brand new delivery system

▶ Easy installation

▶ Intelligent Linkage Program

▶ V2 LED Dental Light



Le Ray G/Le Ray P

- High frequency DC constant voltage control technology.
- 0.4MM focal point, clearer image.
- 2mA tube current and 70kV tube voltage to guarantee stable imaging quality.
- A variety of standard combination procedures are preset.
- High capacity battery, continuous exposure for 300 times after full power storage.
- Light weight design, good for single-hand operation.
- Built-in overheat protection, effectively protects the tube.
- Multiple language options for the user interface.



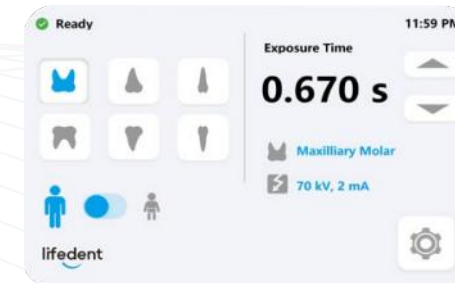
Clear Image Quality



Le Ray G



Le Ray P



Convenient imaging options

Parameters

Mains voltage	220v	Exposure time	0.02-2s
Mains frequency	50Hz	Focal spot size	0.4mm
Power input	200VA	Weight	Le Ray G: 2.1KG
Generator	20KHZ	Weight	Le Ray P: 1.8KG

Le Ray M Floor-mounted, Easy moving

High frequency DC constant voltage control technology

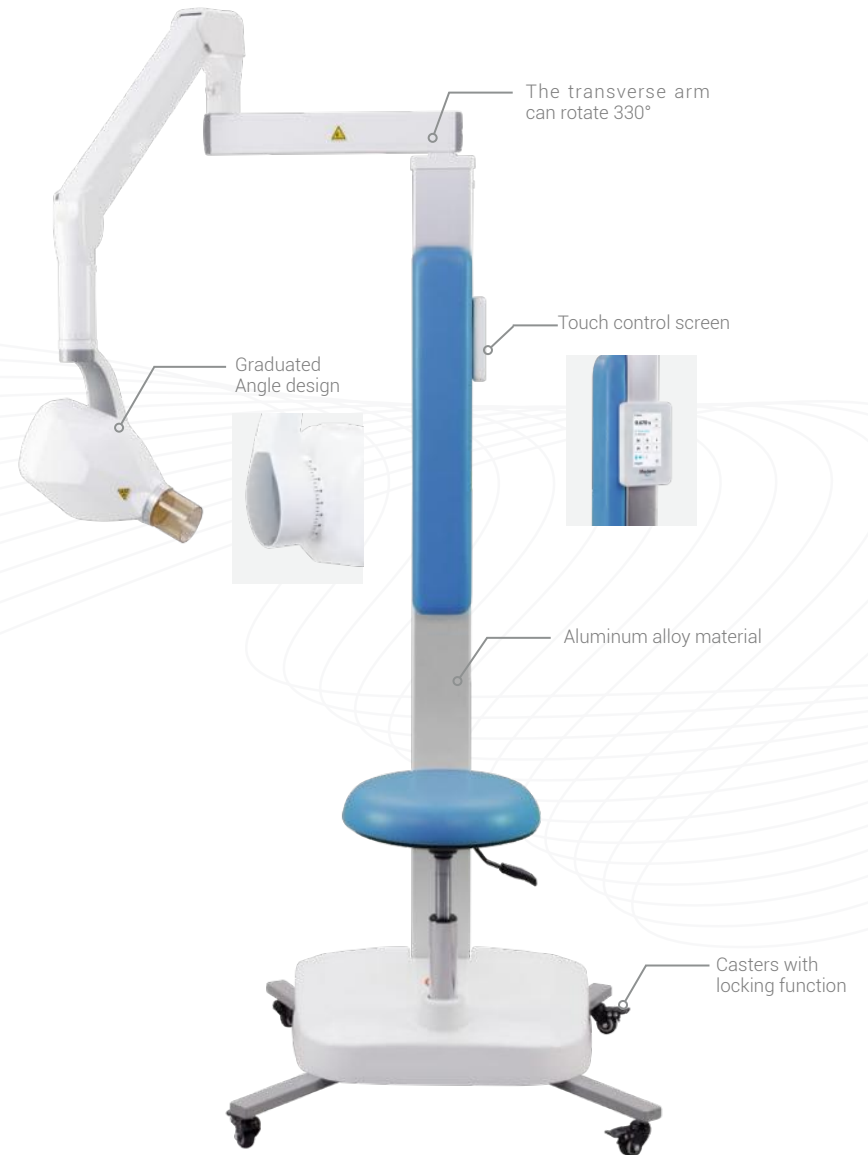
- Higher imaging quality, lower radiation dose.
- The ray output is more stable.
- X-ray tubes last longer.

High Quality Image

- High frequency DC constant voltage control technology, more reliable performance.
- 0.4MM focal point, clearer image.
- It is maintainable.

Safety Protection

- Multiple tube voltage protection measures.
- The cover of the high voltage generator is made of high quality insulating material.
- Equipped with accurate tube overheating protection system.
- Fault self-checking system helps to improve the efficiency of technical services.
- Adjustable seat, comfortable and aesthetic.
- Double joint movable arm design, simple and convenient positioning.



Le Ray W Wall-mounted, Space saving

Scientific Design

- The folding arm has accurate positioning and flexible movement.
- Scientific tube head design.
- Unique ergonomic design, easy to move and clean.
- Tube head using light weight materials, makes sure smooth rotation and positioning without drifting.
- Graduated angle design for the cone makes the positioning easy and accurate.
- 0.4mm focal spot delivers sharp images with optimal details.



Support arm with a new optimal design makes sure of smooth and flexible movement and stable positioning, which brings pleasure experience for the operator



Focal spot of 0.4mm delivers sharp images with optimal details



Graduated angle design for the cone makes the positioning easy and accurate

Parameters

Mains voltage	220V	Exposure time	0.02-2s
Mains frequency	50Hz	Focal spot size	0.4mm
Power input	200VA	Generator	20KHz

Intraoral Sensor



Intraoral Sensor

- 3 Sizes: universal / adult/ child.
- Comfortable: rounded corners and edges to improve patient experience.
- Ultra-thin: 4.4 mm digital sensor.
- Durable: Reliable construction.
- Perfect balance of High Resolution (HR) and Low Dose (LD).
- Efficient and affordable.



- APS CMOS Technology
- Smart AED-Compatible for variety X-Ray sources
- Direct deposition CSI - Lower dose imaging
- USB 2.0 direct connection
- Slim, rounded corner and thumb position
- IP68 - High reliability

Powerful image processing software

- Smart
- Convenient
- Efficient



Hybrid ICs on circuit board

- Low noise integrated circuit design

APS CMOS image sensor

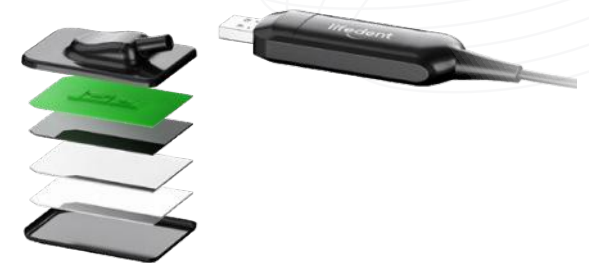
- Low noise CMOS image sensor

CsI scintillator

- Directly deposited CsI insures low Dose (LD) and high resolution (HR)

Robust and safe design

- IP68 high-level protection to ensure that it will not be damaged by water immersion, and can be cleaned and disinfected.



Digital intraoral X-Ray Imaging System

Designed for high reliability

- Reinforced cord connection, over 70,000 bending test ($\pm 90^\circ$) passed

Encapsulation layer

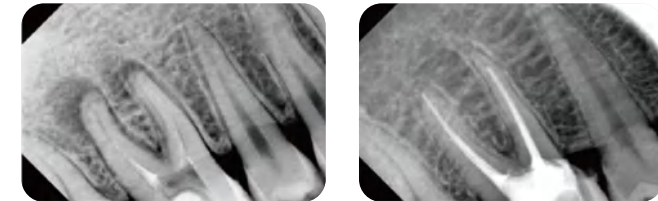
- Protects scintillator

Rounded edges

- Ensuring the safety of detection and improving the comfort of patients.



Real image



Parameters

Products	Pluto 0001X	Pluto 0015X	Pluto 0002X
Mechanical Dimensions (mm)	25.0×38.5×4.5	29.2×42.5×4.5	31.0×45×4.5
Active Area (mm ²)	20×30	24×33	26×36
Pixel Matrix	(1.5M) 1000×1500	(1.98M) 1200×1650	(2.34M) 1300×1800
Sensor Technology	APS CMOS		
Scintillator	Directly deposited CsI:TI		
Length of Cable (m)	Standard 3m/Option 5m		
Pixel Pitch (μm)	20		
Theoretical Resolution (lp/mm)	25lp/mm		
Gray Level	16 bit		
Exposure Mode	Smart AED		
Ingress Protection	IP68 for Soak disinfection		
Additional	Support TWAIN protocol		
Operation System	Windows 7 and above, 32/64 bit		

Perfect collocation with Lifedent Intraoral X-Ray Unit

- Le Ray G/Le Ray P
- Le Ray M/Le Ray W

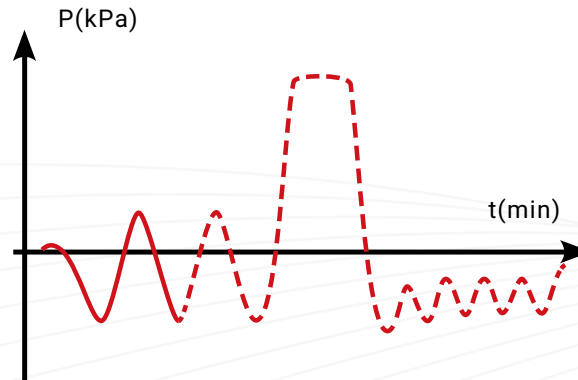


APOLLO 23B/APOLLO 29B



APOLLO 23B

5 trays are included.



Humanized Design Concept

- The thermal printer is included.
- Two-way drainage joint design, easy to use.
- Automatic water supply scheme (optional): automatic water supply and drainage.
- Standard large capacity USB disk can store 1 million sterilization records.
- Electric door design.
- Fault reporting function.

Sterilization cycle with high performance

European Class B model

- European Class B model, with a 3-stage pre-vacuum process.

4 test programs

- 4 test programs onboard which are easy to test the sterilizer performance and working environment.

5 sterilization cycles

- 5 sterilization cycles are available to meet the customers' different needs.

"THT" process validation system

- THT process validation system monitors the temperature and pressure in real-time, thus ensuring the validity of the sterilization.

RS-232 serial port

- Universal RS-232 serial port allows the user to connect the autoclave to a label printer.



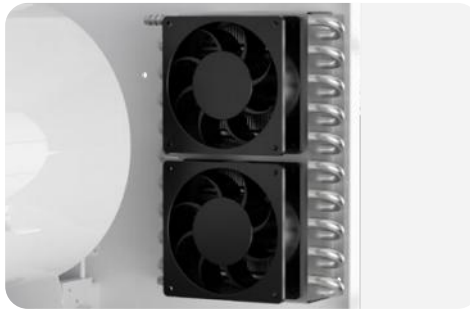
APOLLO 29B

29L large capacity, fast turnover
Satisfy the sterilization of 2 sets of implant surgical instruments

Steam Sterilizer



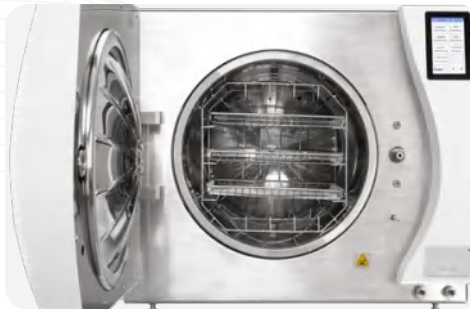
Germany Vacuum Pump



Large area cooling membrane and double fans makes cooling faster.



Thermal printer and two-way drainage connector, more convenient.



APOLLO 29B: Two maximum size implant surgical instrument kits can be easily loaded simultaneously.



APOLLO 29B: At full load, the Class B cycle can be completed in 32min, and the Class S cycle can be completed in 20min.

Effective Security Protection

- The pressure sensor can be accurate to 1mbar which monitors the pressure in real-time.
- With automatic over-temperature protection device to avoid accidents caused by excessive temperature.
- Double overpressure protection ensures the safety of the sterilization process.
- Double door lock safety settings can prevent misoperation and reduce the risk factor.

Parameters

Model	APOLLO 23B	APOLLO 29B
Voltage	2300W	3300W
Power	220V-230V	220V-230V
Frequency	50/60Hz	50/60Hz
Chamber size	23L	29L
External dimension	692×451×455mm	692×604×567mm

Water Filter EGO-FILLER 2

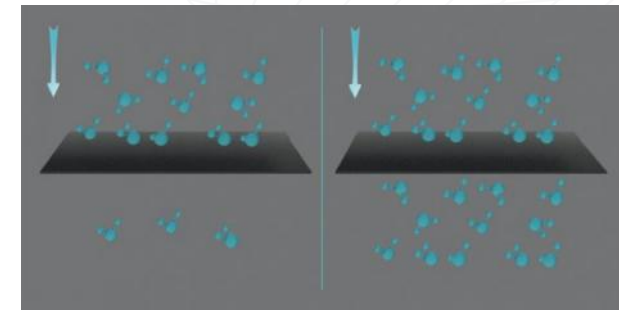
Parameters

Product Specifications	450×136×370mm (L *W* H)
Filtration mode	RO reverse osmosis filtration
Filter level	Four filtering levels
Display	LCD display
Flow rate	15L/h
Outlet water conductivity	< 15μs



- Dual-mode water supply selection (automatic/manual) , supports connection with the Lifestent Apollo sterilizer to achieve automatic water supply.
- 4 Level filtering device which effectively filters out the rust, heavy metals, organic matter in raw water which purifies the water quality in depth.
- The purified water can meet the water quality standards of disinfection/sterilization, and avoid damage to the equipment if the water quality is not up to standard
- The filter element adopts a quick connection design, which is simple to be replaced and it has a replacement prompt function.
- The performance of RO reverse osmosis filter element is stable and the quality is reliable.
- It is easy to install and meets the water demand for multiple sterilizers.
- Long-term service life, low maintenance costs.

Automatic rinsing technology



pre-rinse

Impurities will clog the surface of the filter hole and reduce the water yield.

post-rinse

The surface of the filter hole is not blocked, and the water output is kept normally.

Sealing machine X330

Excellent performance



- The special heater makes the sterilization bag evenly heated and has good sealing performance.
- The 12mm sealing band makes a stronger seal.
- Built-in stainless steel blade makes a flat cutting.

Better using experience



- The integrated design of the sealing machine is firm and stable.
- The optimized design of roller shaft makes the sterilization bag rolls smoothly.
- Bi-directional handle provides comfortable operation.

Easy machine maintenance



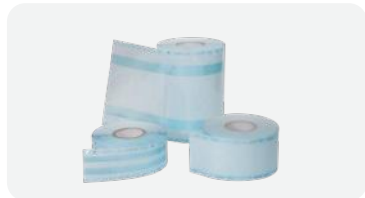
- Simple blade replacement saves maintenance costs.
- The clamp can be adjusted at any time to achieve a good sealing effect.
- The ASA plastic cover is not easy to age and discolor .

Better using experience



- Our PCB of sealing machine is programmed to standby when it is not used for half an hour, which makes it safe and avoids wasting electricity.
- Optional tray layer with silkscreen graduated scale helps to pack multiple bags at the same time and get the dimension of the sealing bags.
- 34cm wide operation port can meet the needs of sealing various sizes of sterilization bags.

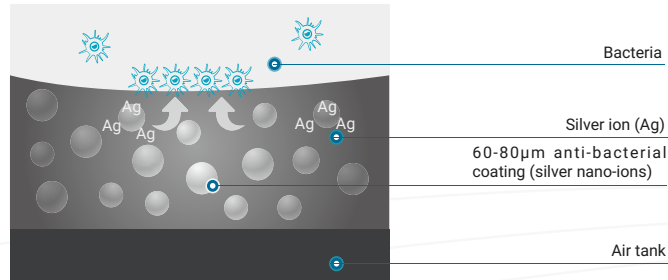
Options of Sterilization Paper Roll



- To pack the medical equipments for sterilization.
- Dimension :
75mmx100m
100mmx200m
250mmx100m



SA Series



Highly effective antibacterial

- Ionic-silver anti-bacterial coating: Granting a clean, infection-less output.

Intelligent actuation

- Intelligent Drive Control.

Rust prevention

- Internally rust-proofing air tank.

Automatic drainage

- Equipped on all series: Automatic Water Drainage.

Product Details

Products	Voltage/Frequency (volt/Freq Hz)	Power VA	Air Flow L/min(0.4MPa)	Tank Capacity (L)	Noise Level (dB)	Dimension L*W*H (mm)	Weight (kg)	Applicable Workplace
SA055	AC220V/50Hz	500	60	32	≤64	406×406×633	24	1
SA075	AC220V/50Hz	750	80	32	≤68	406×406×653	26	1-2
SA150	AC220V/50Hz	1500	160	60	≤70	746×420×764	50	3-4
SA220	AC220V/50Hz	2250	240	90	≤73	996×420×764	70	5-6
SA300	AC220V/50Hz	3000	320	120	≤73	1216×420×764	90	7-8



SA055



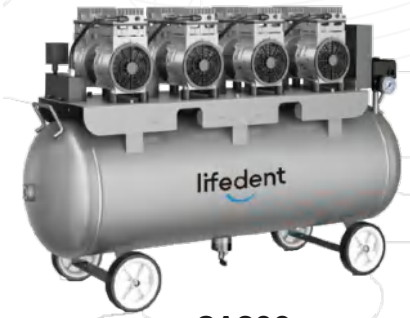
SA075



SA150



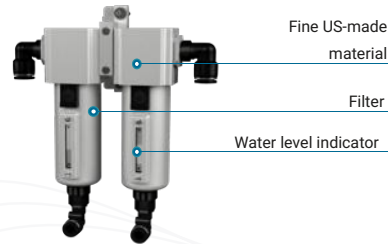
SA220



SA300

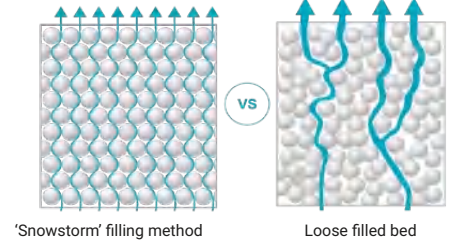
Well-designed filtration device

- Filters that adopt fine American-made material, block tiny particles at the first place.
- Minimum pressure-drop during service, granted by carefully-designed inner structure.
- Accurate control of air flow & pressure adjustment.



'Snowstorm' filling method

- Extended product life without tunneling effect, enabled by tightly & evenly stacked layers of adsorbent.
- Reduced air consumption, achieved with unique design.
- Effectively reduce the wear of the adsorbent to prevent its dusting, so as to obtain a stable dew point.



'Snowstorm' filling method

Fine switching valve

Drying-control system

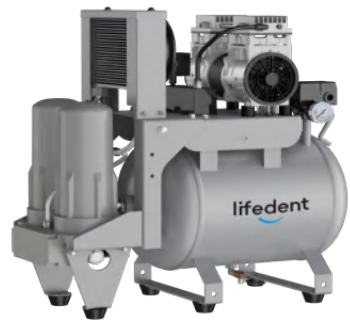


Exclusive drying system

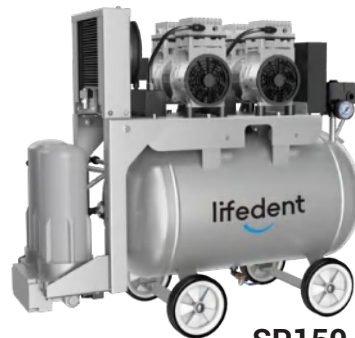
- Exclusive design of drying system: Keep the air pure & oil-less with its dew point under -40°C.
- Non-heat regenerative adsorbent drier: Maintain the exceptional quality of air output.

Product Details

Products	Voltage/Frequency (volt/Freq Hz)	Power VA	Air Flow L/min (0.4MPa)	Tank Capacity(L)	Noise Level	Dimension L*W*H (mm)	Weight (kg)	Applicable Workplace
SP075	AC220V/52Hz	750	80	32	≤68	633×428×633	49	1-2
SP150	AC220V/52Hz	1500	160	60	≤70	951×428×653	65	3-4
SP220	AC220V/52Hz	2250	280	100	≤73	1201×428×780	88	5-6
SP300	AC220V/52Hz	3000	335	100	≤73	1421×428×780	108	7-8



SP075



SP150



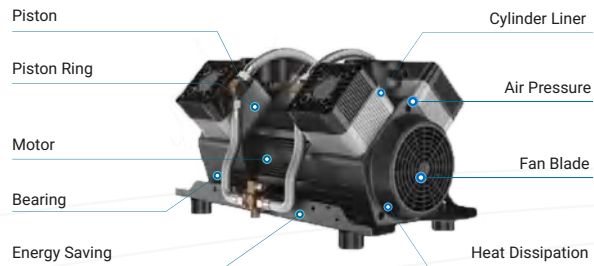
SP220



SP300

Oilless air compressor

SS Series



Stable performance, durable machine, high quality

- Oil-less designed to be ensured purity of air, environmental protection.
- Durability test over 10000 hours.
- The exterior structure adopts shock absorption design to reduce noise.
- Voltage protection, high temperature protection.
- Permanent magnet synchronous motor, more energy saving.



Compact structure



Moth proof,
Anti-emulsification



Low noise



Light weight

Product Details

Model	Voltage/Frequency (Volt/Freq Hz)	Power VA	Air Flow L/min (0.4MPa)	Tank Capacity(L)	Noise Level (dB)	Dimension L*W*H(mm)	Weight (kg)	Applicable Workplace
SS150	AC220V/52Hz	1500	160	60	≤73	965×455×838	75.5	3-4
SS220	AC380V/52Hz	2250	280	100	≤74	1204×455×827	91	5-6
SS300	AC380V/52Hz	3000	335	100	≤75	1204×455×827	98	7-8



SS150



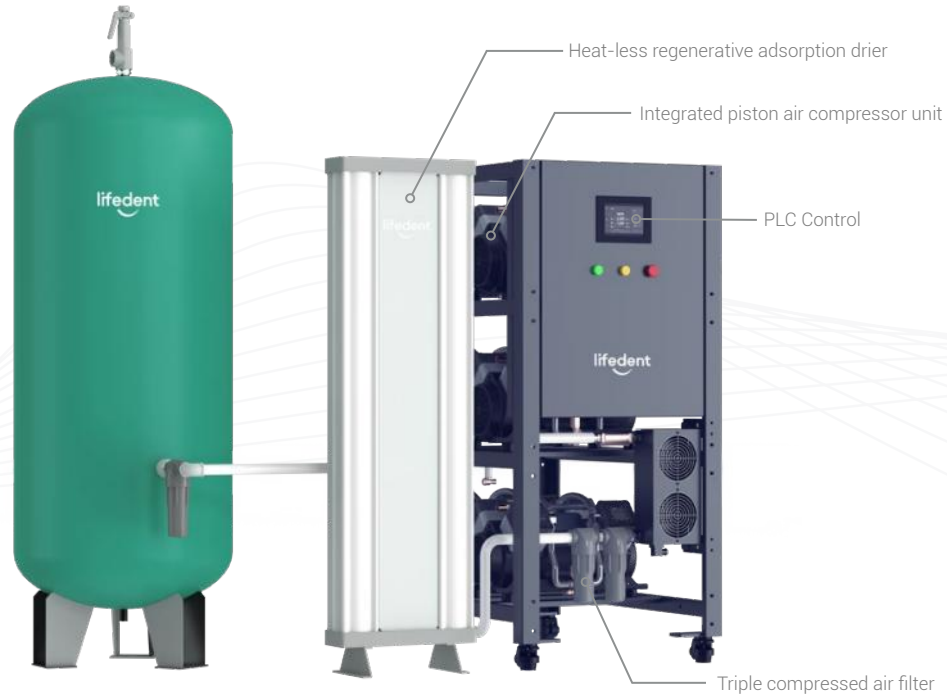
SS220



SS300

Central Air Supply

SC series



- The compressed gas source meets standards GB50751-2012 medical gas engineering technical specifications.
- The large central air supply system has a central air compressor station with adsorption dryers.
- Each air compressor station can be used for as many as 70 working chairs (SC180).
- Personalized customization can be performed according to customer needs.

Product Details

Model	Dimensions (H x L x W cm)	Air Storage tank (L)	Weight (kg)	Frequency (Hz)	Power (kW/380 V)	Current (A)	Number of connected dental unit (sets)	Air displacement(L/min) at 5bar
SC180	160×74×120	600	380	50	18.0kw	33A	50-70	2040
SC120	160×74×120	600	280	50	12.0kw	22A	35-50	1360
SC90	160×74×120	600	230	50	16.5kw	16.5A	20-35	1020

VC series



VC10/VC20/VC30



VC30+/VC60+/VC80+



High efficiency separation of wastewater



The air/water separation device is included



Pressure sensor
Visual operation of frequency conversion control



Programmable interactive interface



Ultra high-pressure vacuum pump load balance



Low noise

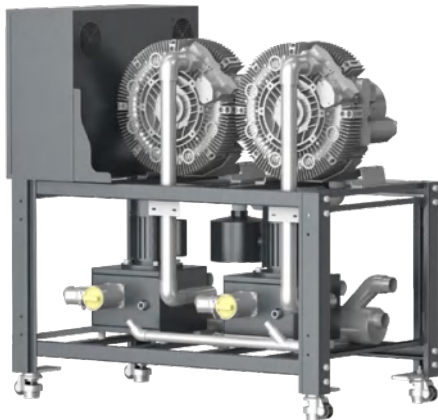
Product Details

Model	VC10	VC20	VC30	VC30+	VC60+	VC80+
Applicable workplace	1	2	2-4	2-4	4-6	6-8
Input power(v)	220	220	220	220	220	220
Rated power(W)	500	700	1100	550	1000	2000
Maximum current(A)	3.5	4.8	7.3	7	9.5	13
Negative pressure	-12	-13	-15	-15~-25	-15~-25	-15~-25
Max.Gas flow(/min)	300	600	1200	1200	1500	2000
Frequency conversion	NO	NO	NO	YES	YES	YES
Noise(dB(A))	65	65	68	68	68	68
Weight(kg)	25	26	29	33	35	37
Dimension(mm)	340*308*527	340*308*552	340*308*565	455*365*603	455*365*603	455*365*627



VC150/VC200

- Dual motor design; Separation motor (separation of water and air, water can not be filled in the suction motor).
- The whole series use the ultra-high voltage main engine, high speed, low-temperature rise, low load current, low noise to achieve perfect suction.
- Flame-retardant and sound-absorbing design inside the chassis.
- Integrated design, independent research and development of control system, visual operation, real-time monitoring, modular design.
- Multiple models to meet different requirements.



VC300/VC400



Efficient



Energy conservation



Low noise



Stable



Intelligent

Product Details

Model	Voltage (AC/V)	Power (KW)	Maximum current (A)	Maximum amount of air flow (L/min)	Negative pressure (KPa)	Noise (dB)	Number of connected patient chairs (sets)	Dimensions (mm)
VC150	380V	3.3	14.5	4500	-15~-25 adjustable	< 68	15	695×640×645
VC200	380V	4.4	17	6000	-15~-25 adjustable	< 68	20	865×690×645
VC300	380V	6.6	29	9000	-15~-25 adjustable	< 65	30	1270×690×1270
VC400	380V	8.8	34	12000	-15~-25 adjustable	< 65	50	1270×690×1270

Dental Wastewater Treatment System



Product Details

Model Name	WT05	WT10	WT20
Applicable Work Place	1-5	5-10	10-20
Input Voltage (V/Hz AC)	220/50 (1~)	200/50 (1~)	200/50 (1~)
Power (KW)	300	460	700
Water Inlet Type	Self-suction/Self-drain/Dual-Model	Self-suction/Self-drain/Dual-Model	Self-suction/Self-drain/Dual-Model
Treatment Model	Ozone Sterilization	Ozone Sterilization	Ozone Sterilization
MAX.Suction Flow (t/d)	7.5	15	30
Self-suction Tube Size (mm)	φ32	φ32	φ32
Self-drain Tube Size (mm)	φ40	φ50	φ50
Administration Function	Automatic/manual	Automatic/manual	Automatic/manual
Dimensions (L*W*H)mm	470*360*670	570*350*670	610*430*900
Weight (kg)	32	38	53
Noise (dB)	≤65	≤65	≤65



Auto-suction & Auto-discharge
Double modes



Compact product design
small footprint, strong power



Ozone Sterilization
complete elimination of bacteria&virus



Looped sterilization process:
Extra guarantee of hygiene&safety



All-time automatic
safe use, worry less



Corrosion-resitant water tank
perfectly sealed to prevent ozone
leakage

Optional Items



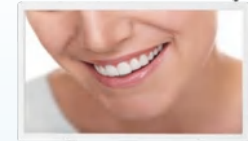
**Built-in Scaler
N2000L**



**Built-in Scaler
N3000L**



**Built-in Curing light
Q6**



**Dental Intraoral Camera all-in-one
A9S-X**



**Dental Intraoral Camera all-in-one
A6S-X**



**Dental Intraoral Camera all-in-one
A3M-X**



**Dental High-Speed Turbine
XP1**



**Dental High-Speed Turbine
XP2LG**



**Dental High-Speed Turbine
XP4T**



**Dental High-Speed Turbine
XP5LG**



**Dental Low-Speed Motor &
Handpiece MP-L530**



**Brushless LED Electric
Micromotor E1**

Your lifetime dental partner

lifedent

Lifedent (Zhuhai) Co., Ltd

Add: 3rd floor and 4th floor, Building 3, No.1 Chuangxinyi Road,
Tangjiawan Town, Hi-tech Zone, Zhuhai, China

Tel: +86-756-8699593 Email: sales@lifedent.cn

en.lifedent.cn