

Intelligent, efficient,  
cloud based

**VERSION 5.4  
WITH NEW  
FEATURES**

# **RealGUIDE® Software Suite**

Guided implant surgery  
and restorative design

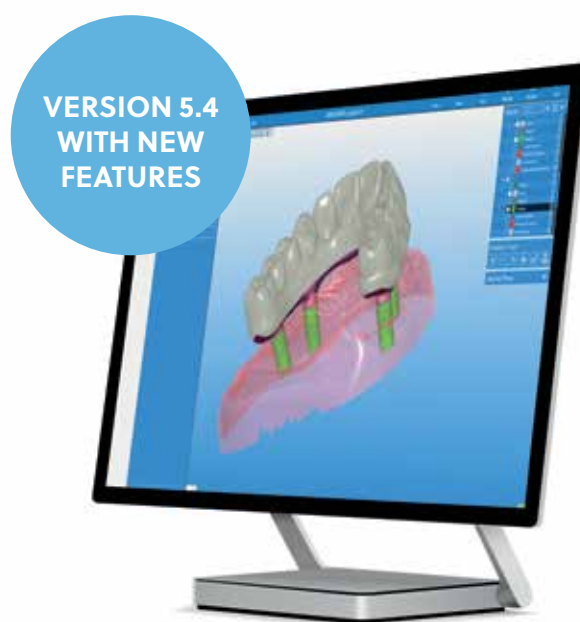


 **ZimVie**

# Improve efficiency and productivity

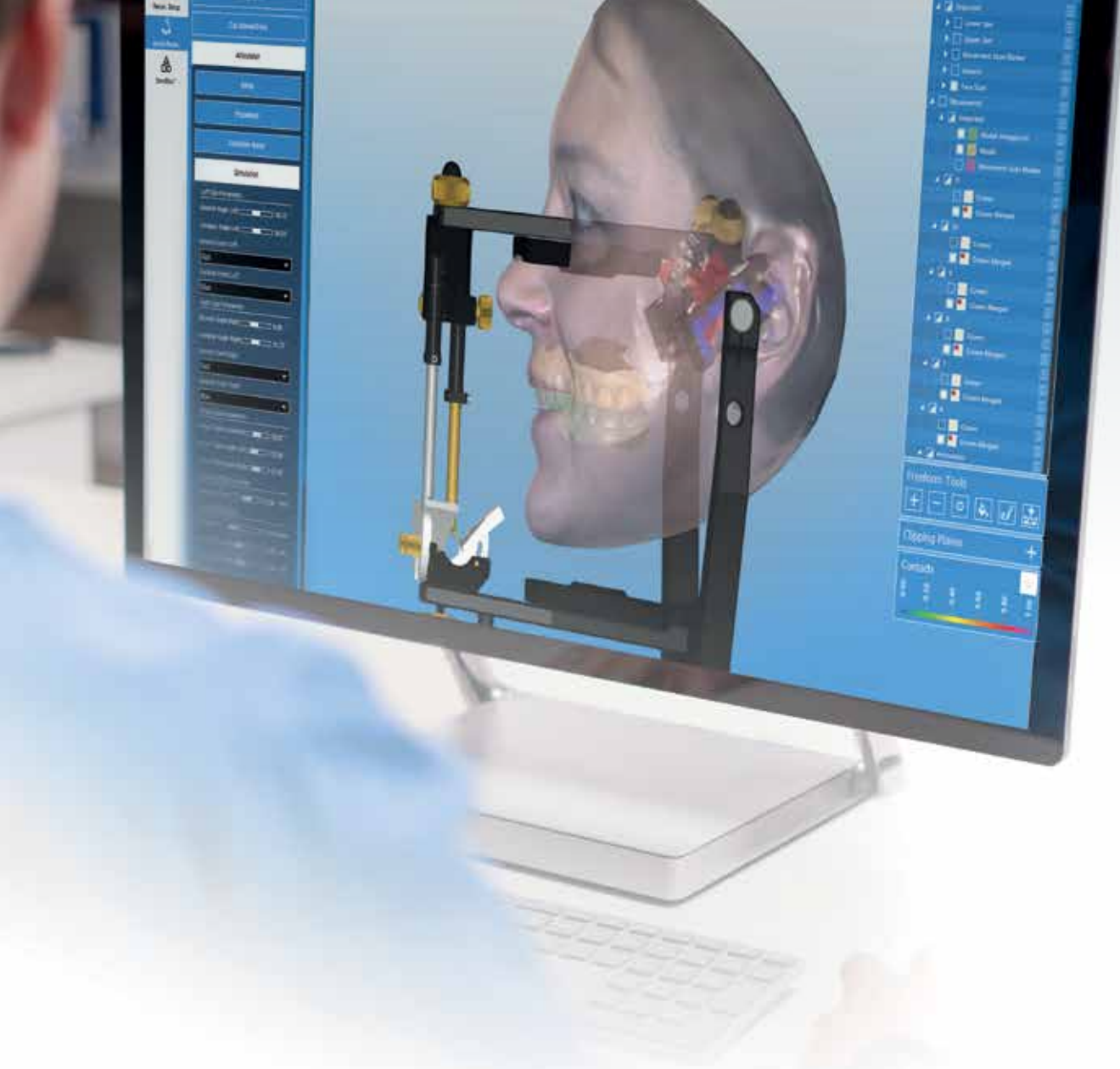
## RealGUIDE Software Suite version 5.4

The latest RealGUIDE software has state-of-the-art features and sets new standards in dental design. Immerse yourself in cutting-edge improvements and discover the exciting possibilities.



### Time saved with RealGUIDE software

	Conventional Software Suite	RealGUIDE Software Suite
Nerve Detection	5 minutes	Less than 1 minute
Full-arch Bone Segmentation	1.5 hours	2 minutes
Full-arch Crown Segmentation	5 minutes	10 seconds
Full-arch Tooth Segmentation	5 minutes	Less than 2 minutes
Single-unit Treatment Plan + Surgical Guide Design	20 minutes	Less than 10 minutes
Full-arch Treatment Plan & Surgical Guide Design	45 minutes	Less than 15 minutes
Stackable Guide Design	2 hours	Less than 45 minutes



## Introducing RealGUIDE Software Suite

### Uniquely integrating surgical and restorative design

The RealGUIDE Software Suite provides everything needed for precise implant planning, surgical guides, and restorative design to elevate patient care while delivering workflow, time, and cost efficiencies.

The software modules may be combined as desired for intuitive, flexible, implant surgery and restorative design.

### Features

- Powerful AI tools
- Automated functionality for intuitive and efficient procedures
- Cloud-based license and library management infrastructure
- Vast implant library
- Built-in communication and file sharing platform
- Interconnected modules ensure seamless workflows
- Open architecture for maximum flexibility
- Mac, PC, or iOS mobile compatible

## Save valuable time with Artificial Intelligence (AI) tools.

### One-Click AI Nerve Detection

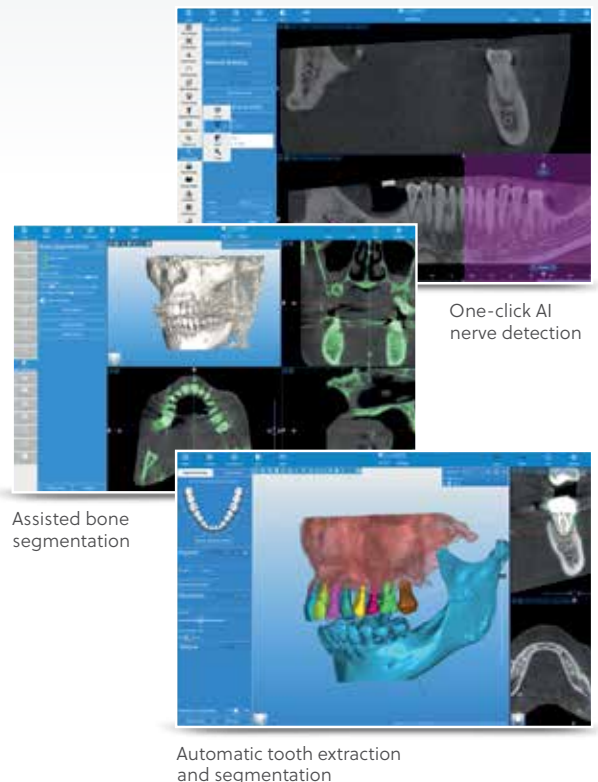
Automatically trace nerves in the mandible with a click of a button and save time evaluating CBCT to trace nerves.

### Assisted Bone Segmentation

Handle complex cases in a fraction of the cost and time using automatic bone segmentation and virtual tooth extraction.

### Automatic Tooth Extraction & Segmentation

The New Tooth Segmentation AI tool automatically extracts and segments teeth without needing to individually segment and extract each tooth one by one. This is beneficial when planning for immediate extractions for implants and immediate or partial dentures.



## Boost productivity by using cloud-based libraries.

### Cloud Prosthetic Library

Get access to prosthetic libraries in the cloud with RealGUIDE 5.4. No need to manually download and install libraries on your system. Access all prosthetic libraries inside the software without needing to step out and upload libraries.

### New Stock Libraries

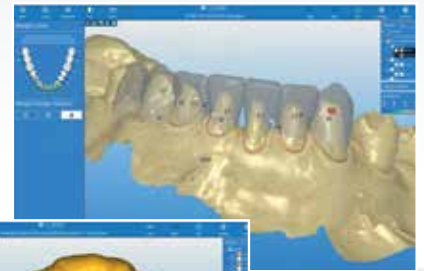
Import and use the manufacturers' stock libraries and directly design a crown.



## Increase efficiency by streamlining design.

A workflow is only as good as its tools. RealGUIDE Software offers maximum flexibility with an intuitive combination of powerful tools, making design both efficient and effective.

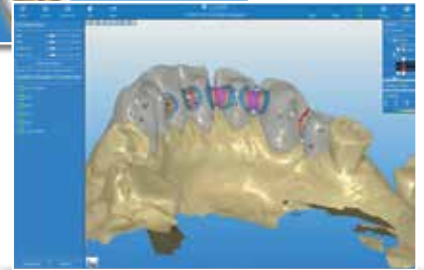
- Simplified emergence profile design
- Reference index for guide sleeves
- New teeth display shortcuts
- Gingival line adjustment tool
- Auto-connector tool
- Margin-line duplication tool
- User-defined customizable 3D views
- Flexible waxup and antagonist replacement
- and more!



Margin-line duplication tool



Reference index for guide sleeves



Auto-connector tool

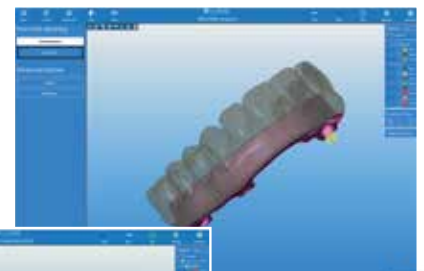
## Expanded design capabilities for a seamless workflow.

### Split Bar Workflow

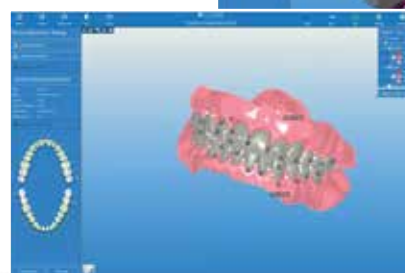
Introducing the new Split Bar workflow enabling creation of beautiful hybrid (zirconia and titanium) screw-retained or cement-retained full-arch restorations from a single waxup.

### Copy Denture Workflow

The new workflow enables the creation of a new denture by segmenting the teeth and gingival base from a scanned old denture.

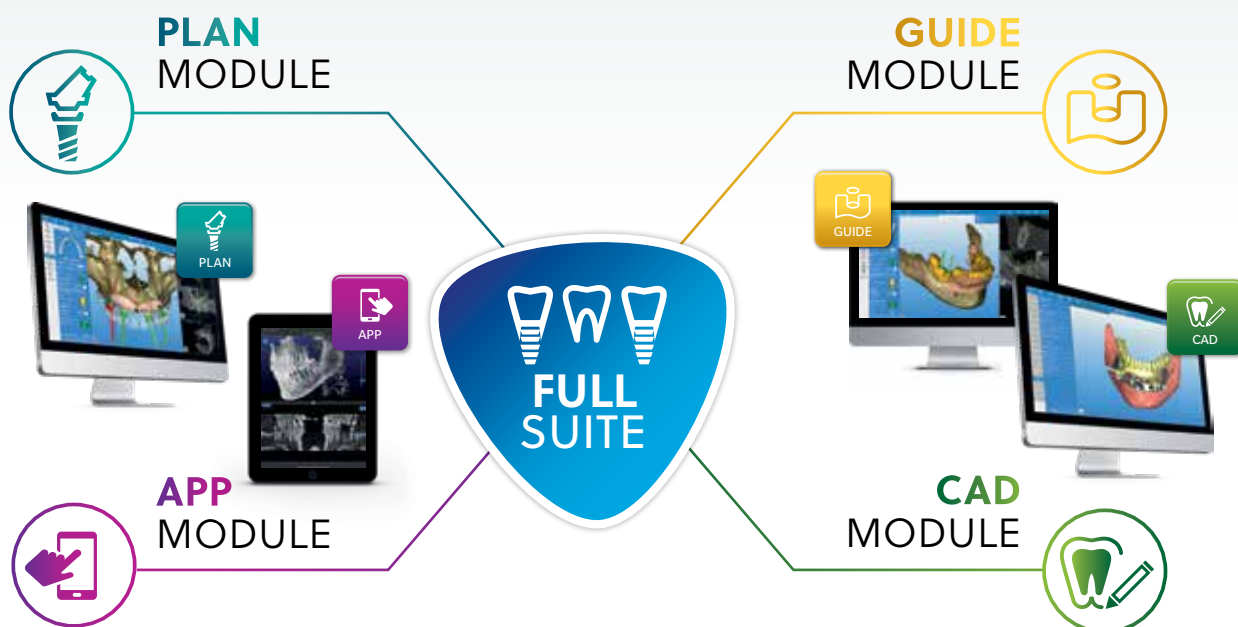


Split Bar Workflow



Copy Dentures Workflow

# One Software. Many Possibilities.



More information about the  
different modules and pricing  
options are available at  
[RealGUIDE.com](https://RealGUIDE.com)

## ZimVie Global Headquarters

4555 Riverside Drive  
Palm Beach Gardens, FL 33410  
Phone: +1-561-776-6700  
Fax: +1-561-776-1272  
[www.ZimVie.com](https://www.ZimVie.com)

 **ZimVie**  
Restoring Daily Life.®

Unless otherwise indicated, as referenced herein, all trademarks and intellectual property rights are the property of ZimVie Inc. or an affiliate; and all products are manufactured by one or more of the dental subsidiaries of ZimVie Inc. (Biomet 3i, LLC, Zimmer Dental, Inc., etc.) and marketed and distributed by ZimVie Dental and its authorized marketing partners. For additional product information, please refer to the individual product labeling or instructions for use. Product clearance and availability may be limited to certain countries/regions. This material is intended for clinicians only and does not comprise medical advice or recommendations. Distribution to any other recipient is prohibited. This material may not be copied or reprinted without the express written consent of ZimVie. ZV2509 REV A 09/24 ©2024 ZimVie. All rights reserved.

