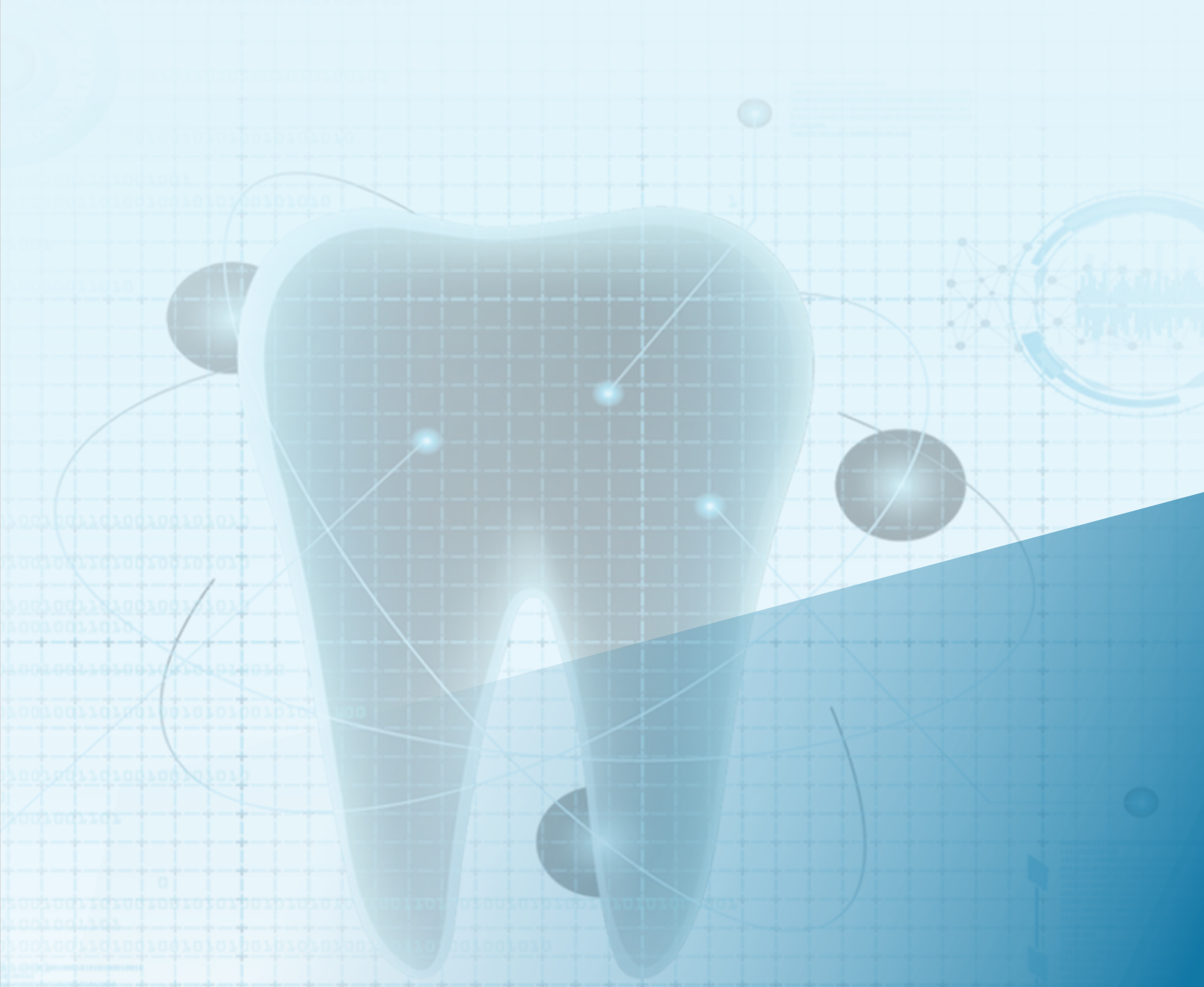




YUCERA



TECHNOLOGY INNOVATION
PEOPLE ORIENTED
CONCENTRATING ON R&D



YRC-5X

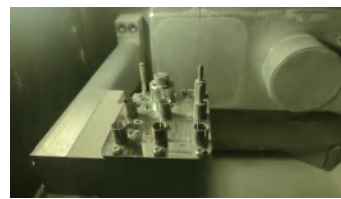
CAD/CAM 5 Axis Dental Milling Machine

Yucera dental milling machine is a dry cutting equipment with five-axis linkage, designed with micron-level high-precision cutting and high-reliability performance to provide you with a more efficient, powerful, accurate and stable processing experience.

Product parameters

- **Milling materials**
Zirconia block, Composites materials, Wax/PMMA
- **Processing Methods**
Five-axis linkage, dry milling
- **Tool magazine capacity**
10
- **Burs specifications**
Special props for handle diameter 4mm
- **Power**
Working Power : 1.5kw
- **Dimension W*H*D**
530*650*750mm
- **Weight**
170kg

Product Details



10 Cutter libraries



90° Vertical Milling



Automatic cutter change, cutter alignment



Resume when interrupted

Machinable Material



Zirconia Block



PMMA



Wax



Composite Material



YRC-6X

Wet dental milling machine

YRC-6X is a wet cutting equipment with light volume and stable performance. It is a high-precision and high-efficiency vertical five-axis linkage cutting machine.

Product parameters

- **Milling materials**
Lithium Disilicate, Zirconia block, Titanium pillar, soft metal, PMMA
- **Processing Methods**
Five-axis linkage, Wet milling
- **Tool magazine capacity**
10
- **Burs specifications**
Special props for handle diameter 4mm
- **Power**
Working Power : 1000w
- **Rotating axis operating angle**
A: 360° B: +20°
- **Dimension W*H*D**
535*655*720mm
- **Weight**
140kg

Product Details



10 Cutter libraries

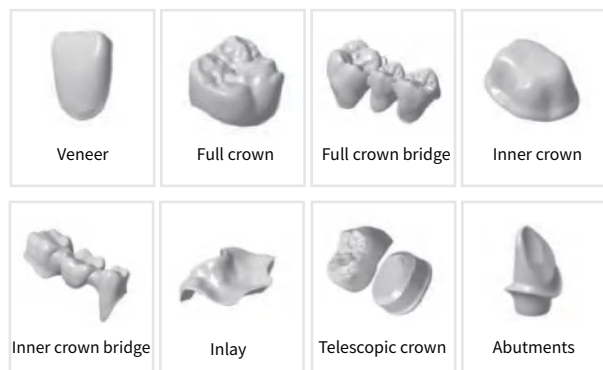


8 different materials can be placed at the same time



Integrated water level monitoring

Machinable products





GSL5T

CAD/CAM 5 Axis Dental Milling Machine

GSL5T is especially convenient for precise and simultaneous 5 axis milling of small parts in a single clamping operation.

Product parameters

- **Milling materials**
lithium disilicate ,titanium, cobalt chromium, nickel chromium, zirconia, wax, PMMA
- **Tool magazine form/tool change time and length**
Telescopic tool magazine / 2S
- **Spindle speed**
60000rpm/min
- **Maximum tool diameter and length**
φ6mm/60mm
- **Spindle motor power**
1.8kw
- **Input voltage**
AC:220V/10A
- **Dimensions (L *W*H)**
750mm* 780mm* 1500mm

workbench



Product Details



Control system



Workbench operation interface



Cutter library



Workbench operation buttons



Automatic cutter change, cutter alignment



Strong structure



YRC F10+

Up-Down Automatic Sintering Furnace

Sintering of single crowns on incisors in as little as 90 minutes and delivery of polished teeth in 2 hours.

Product parameters

- Size
370(L)*530(W)*780(H)mm
- Weight
50KG
- Temperature control accuracy
 $\pm 1^{\circ}\text{C}$
- Maximum temperature
1560 $^{\circ}\text{C}$
- Furnace size
 $\varnothing 110\text{mm} * 130\text{mm}$
- Rated power
 $\leq 2\text{KW}$
- Number of programs
24 programs



Custom Sintering



Double-layer stacking



Uniform sintering



Touch screen control panel



Efficient and fast



Energy saving and environmental protection



YRC-V5

Vacuum cleaner

Yucera vacuum cleaner can through the signal interface, it can be linked with the equipment to realize intelligent start and stop, and automatic pulse dust removal during operation.

Product parameters

- Size
380*450*675mm
- Power
1200W
- Electric Current
4A
- Frequency
50 Hz
- Voltage
220V
- Cleaning method
Manual cleaning



Rotate the button to adjust the suction power, easy to operate



The operating noise of the vacuum cleaner is low, and the noise value is below 48dB



Equipment using brushless motor, durable and can work for a long time



Easy Maintenance



Universal casters, 360-degree rotation, easy to move



YRC-S02

Intraoral Scanner

Intraoral scanner with high performance is suitable for restoration, implant, and orthodontics.

Product parameters

- **Size**
216mm*40mm*36mm
- **Weight**
228g
- **Depth of Field**
20mm
- **Tips**
3types (N/M/D)
- **Field of View**
18*16mm
- **Digital Interface**
USB 3.0
- **Full Jaw Scanning Time**
1-2min
- **Data Format**
STL;PLY;PTY
- **Supply Voltage (V)**
100-240V/50-60Hz
- **Supply Current (A)**
0.7-1.5A
- **Storage Temperature (C)**
-10°-55 °C



AI Technology, much smarter, improve a lot of scanning experience



3 Different tips, meet more demands of different applications



Much smaller, very easy to operate



Clear margin line, full HD color, high accuracy



Fast scanning speed, easy to learn and use



Rotate the scanning data with just a wave of the hand



YRC-RS300

Auto Scanning Dental 3D Scanner

Suitable for many application areas and wide range of application options

Product parameters

- Scan range
150x100x90mm
- Automatic matching accuracy
99.9%
- scanning method for double-sided impression texture
Once
- Output Format
STL, PLY
- Related software
exocad
- Accuracy
< 10µm
- Weight
9kg
- Data interface
USB3.0
- Texture
True color
- Structure
Structured Blu-ray
- Scanning principle
Contactless scanning
- Placement method of die model
Place freely

Powerful scanning performance



High precision

Domestic and international double standards, the scanning accuracy of the full dental arch can be guaranteed to be <10µm



High speed

Different scenes can distinguish fine scanning, Simply scan on demand to eliminate time waste. Dramatically speed up your workflow

Application benefits

Undivided scan

Two more scanning steps, no need to re-scan, saving time and effort

Splitted scan

Two less scanning steps, accurate scan segmentation, and highlighted features

Texture scan

Vibrant color, clear outline, true display



DJ89 PLUS

Professional dental 3D printer
10.3" 8K monochrome screen
and high precision.



Splint



Denture



Temp
Crown



Surgical
Guide



Occlusal
Model



Restoration
Model



Casting
Crown



Automatic feeding



Molding chamber
heating (20-45°C)



XY axis accuracy
29µm



Printing size
228X 120X 100mm



Screen resolution
10.3" 8K 7680*4320



High speed release film

DJ89 PLUS Parameters

Printing size	228X 120X 100mm	Z axis	Dual linear guide + Ball screw
Machine size	340X292 X 552mm	LCD screen life	2000h
Packing Size	605X380 X 660mm	Anti-aliasing	8 times anti-aliasing
XY axis accuracy	29µm	Automatic leveling	support
Printing Speed	40-60mm/h	Automatic feeding	support
Printing Layer thickness	0.01-0.1mm	Language	Support 12 languages, priority on Chinese and English
Touch Screen	5.0 Inch Full color touch screen	Support system	Windows7/8/10 X64, MAC, OS
Support consumable types	405nm dental, jewelry, washing and other photosensitive resin	Molding chamber heating	support(Temperature range 20-45°C)
Resolution	7680*4320		



UW-01

Washing Curing Machine

The all-in-one washing and curing machine makes the 3d post-production process a lot smoother, cleaner, and quicker, helping you to create your 3d models in an ultra-quick way.

Product parameters

- **Model**
UW-01
- **Machine Attributes**
Cleaning and curing
- **Control mode**
Touch key, LED indication, digital time display
- **Rated power**
96W
- **Input Voltage**
24V
- **Cleaning air-drying curing time**
2-90min (Selectable time)
- **Cleaning size**
170*120*160mm
- **Curing size**
165*200mm
- **Machine size**
225*225*370mm
- **Packing size**
298*297*505mm
- **Machine Weight**
6.5KG

Product Features



Large size
Sealable cleaning
cartridges



Dual band
UV light source



360° magnetic
rotating platform



Three speed
adjustments



2-90min
Selectable time



High Definition Touch
Sensor Buttons



Porcelain Press Furnace

High quality temperature automatic adjustment function, to ensure that the actual temperature error within ± 1 degrees.

Product parameters

- Size
360mm* 270mm*700mm
- Power
1500W
- Usable measure
9cm
- The max temperature
1200°C max
- The velocity of temperature increasing
200°C /min max
- Net weight
23kg
- Vacuum level
1-101%
- Ambient temperature
2°C to 40°C
- Operation range
100-120V 50/60HZ
230V 50/60HZ



Motor driven die casting mode, no gas source, constant pressure, adjustable speed, high success rate of die casting.



Fully compatible with the function of porcelain furnace, it can automatically switch to porcelain furnace mode or porcelain casting furnace mode according to the selected program.



Voice prompt function.



90 custom programs and built-in programs.



Automatic temperature calibration before each baking procedure.



Porcelain Furnace

Hyperbolic ceramic furnace function, the program can be set to single curve mode or hyperbolic mode, hyperbolic mode provides a complete crystallization process for glass-ceramic crystallization.

Product parameters

- Size
360mm* 270mm*530mm
- Power
1500W
- Usable measure
9cm
- The max temperature
1200°C max
- The velocity of temperature increasing
200°C /min max
- Vacuum level
1-101%
- Net weight
20kg
- Weight include the package
23.5kg
- Operation range
100-120V 50/60HZ
230V 50/60HZ



Automatic temperature calibration before each baking procedure.



High quality temperature automatic adjustment function, to ensure that the actual temperature error within ± 1 degrees.



Voice prompt function.



90 custom programs and built-in programs.



True color touch screen, easy to operate.

Shenzhen Yurucheng Dental Materials Co.,Ltd

No. 35, Zhuqing Road, Shijing Community, Shijing Street,
Pingshan District,Shenzhen, China

Web :<https://www.yucera.com>

Tel:+86(755)-28228626

Email : info@yucera.com Fax:+86(755)-28228526